





# **Kep Data Book 2009**

**GIS code: 23**



# Table of Contents

List of Abbreviations.....	i
Glossary .....	iii
Preface.....	vii
Introduction.....	1
<b>SECTION A: MAPS .....</b>	<b>3</b>
<b>1. Administration and Infrastructure .....</b>	<b>5</b>
<b>2. Land Use and Natural Resources.....</b>	<b>7</b>
<b>3. Poverty map.....</b>	<b>7</b>
3.1. 2004 Poverty Map.....	9
3.2. 2009 Poverty Map.....	9
<b>4. Land area and distance .....</b>	<b>9</b>
4.1. Land area by district, mid 2009.....	11
4.2. Land used area by category, 2006.....	11
4.3. Distances between District Center and Provincial Town .....	11
<b>SECTION B: PROVINCIAL PROFILE.....</b>	<b>13</b>
<b>5. General Information .....</b>	<b>15</b>
<b>5.1. Population of the Province.....</b>	<b>15</b>
5.2 Occupations .....	16
5.3 Property.....	18
<b>6 Infrastructure and Economy .....</b>	<b>20</b>
6.1 Roads in meters, 2006-2008.....	20
6.2 Sewerage Pipes in meters, 2006-2008.....	20
6.3 Drainage and Bridges .....	20
6.4 Services in the Province.....	21
6.5 Agriculture .....	21

<b>7</b>	<b>Social Aspects.....</b>	<b>33</b>
7.1	<i>Education .....</i>	33
7.2	<i>Health.....</i>	40
7.3	<i>Water and Sanitation.....</i>	41
7.4	<i>Vulnerable groups.....</i>	45
7.5	<i>Migration.....</i>	48
<b>8</b>	<b>Natural Resources and Environment (NRE).....</b>	<b>50</b>
8.1	<i>Families involved with NRE issues, 2006-2008.....</i>	50
8.2	<i>Percentage of Families involved with Natural Resource issues, by District, for 2008.....</i>	50
8.3	<i>Percentage Houses with access to Garbage collection and Families affected by environmental Pollution, by District, for 2008.....</i>	50
8.4	<i>Percentage Families using chemical Fertilizer and chemical Pesticides, by District, for 2008 .....</i>	50
<b>9</b>	<b>Administration and Security .....</b>	<b>51</b>
9.1	<i>Birth Registration, 2006-2009 .....</i>	51
9.2	<i>Number of unregistered Infants born in 2008, by District .....</i>	51
9.3	<i>Registered criminal Cases, 2006-2008.....</i>	51
9.4	<i>Registered criminal Cases per 10,000 people, by District, for 2008.....</i>	51
9.5	<i>Number of registered Land Disputes, by District, in 2008 .....</i>	51
<b>10</b>	<b>Gender.....</b>	<b>52</b>
10.1	<i>Reported Domestic Violence, 2006-2008 .....</i>	52
10.2	<i>Percentage of reported cases of Families experiencing domestic Violence, by District, in 2008 .....</i>	52
10.3	<i>Women's involvement, 2006-2008.....</i>	52
10.4	<i>Percentage of Female Participants in Civil Society and of 18-60 year women with uncertain Jobs, by District, in 2008.....</i>	53
10.5	<i>Female-headed Households, 2006-2008.....</i>	53
10.6	<i>Percentage female-headed Households and with Children of less than 5 years old, by District in 2008 .....</i>	53

<b>11</b>	<b>Indigenous People in the District .....</b>	<b>54</b>
11.1	<i>Ethnic Minorities in the District, 2006-2008.....</i>	54
11.2	<i>Other Minorities in the District, 2006-2008.....</i>	54
<b>SECTION C: PLANS AND PROJECTS .....</b>		<b>55</b>
<b>12</b>	<b>Priorities and Plans.....</b>	<b>57</b>
12.1	<i>Priorities of the Districts in the Province for 2009 by Sector.....</i>	57
12.2	<i>Total Expenditure on C/S Fund Projects by sector and district between 2005 and 2008 ...</i>	59
<b>13</b>	<b>District level Projects from 2006 to 2009 .....</b>	<b>60</b>
13.1	<i>District Initiative Infrastructure Projects from 2006 to 2009 .....</i>	61
13.2	<i>District Initiative Service Projects from 2006 to 2009 .....</i>	62
13.3	<i>Inter Commune Council Projects in 2008 and 2009 .....</i>	64
13.4	<i>Provincial Investment Fund (PIF) and District Investment Fund (DIF) .....</i>	65
13.5	<i>Other projects in the Province.....</i>	68
<b>SECTION D: SERVICES AND ORGANIZATIONS .....</b>		<b>69</b>
<b>14</b>	<b>Infrastructure.....</b>	<b>71</b>
14.1	<i>Lengths of and Expenditure on Roads in 2008 by District.....</i>	71
14.2	<i>Scale of and Expenditure on Irrigation in 2008 by District.....</i>	71
14.3	<i>Power Supply in 2008 by District .....</i>	71
<b>15</b>	<b>Health Facilities.....</b>	<b>72</b>
15.1	<i>Health Facilities by Operational District .....</i>	72
15.2	<i>Health Facilities and Staff by Operational District, 2008.....</i>	72
15.3	<i>Deliveries in 2007, by Operational District.....</i>	73
15.4	<i>Major Health NGOs active in the Province, by Operational District.....</i>	73
<b>16</b>	<b>Education.....</b>	<b>74</b>
16.1	<i>Schools, Classes, Students and Staff in 2007/2008.....</i>	74
16.2	<i>Characteristics of Schools and School Principals in 2007/2008.....</i>	74
16.3	<i>Enrollment by Level of Education, 2006/2007 .....</i>	74

16.4	<i>Enrollment by Level of Education 2007/2008</i> .....	75
16.5	<i>New Intake and Enrollment by Level and Age (Both Sexes), 2007/2008</i> .....	75
16.6	<i>Condition of School Buildings, 2007/2008</i> .....	75
16.7	<i>Condition of Classrooms and Existence of Separate School Office and Library, 2007/08..</i>	76
16.8	<i>Community Participation and Financing, 2007/2008</i> .....	76
16.9	<i>Indicators on Students and Staff by District, 2007/2008</i> .....	76
<b>17</b>	<b>Private Sector organizations in the District</b> .....	<b>77</b>
17.1	<i>Registered Companies in 2008, by district</i> .....	77
17.2	<i>Credit to Farmers in 2008, by district</i> .....	77
	<b>SECTION E: MISCELLANEOUS INFORMATION</b> .....	<b>79</b>
<b>18</b>	<b>Data on Poverty</b> .....	<b>81</b>
18.1	<i>Predicted Poverty Rates for 2009, by commune</i> .....	81
18.2	<i>Poverty data from Survey</i> .....	81



## List of Abbreviations

#	Number
AGR	Agriculture
BR	Birth Registration
CCs	Commune Councils
C. Pilot	Piloted Commune
C/S	Commune / Sangkat
CBO	Community-Based Organization
CDB	Commune Database
CDPD	Commune Development and Planning Database
CIP	Commune Investment plan
CLTS	Community Led-Total Sanitation
Comm.	Commune
Com Cov	Commune Covered
CPA	Complementary Package of Activities
CPS	Community Preschool
CCWC	Commune Committees for Women and Children
DANIDA	Danish International Development Agency
DDLG	Democratic Development and Local Governance Project (EC-UNDP)
DFID	Department For International Development (UK)
DIF	District Investment Fund
DIP	District Initiative Project
DIS	District Information System
District PDRD	District Office of Rural Development
District WP	District Work Plan
DIW	District Integration Workshop
DMC	Department of Media and Communication
DoLA	Department of Local Administration
Dr	Doctor
DWRM	District Office of Water Resource and Meteorology
ECD	Early Childhood education (part of PE)
EMIS	Education Management Information System
Event IC	Celebration of International Days
FDH	Former District Hospital
GTZ	German Society for Technical Cooperation (Gesellschaft für Technische Zusammenarbeit GmbH)
Ha	Hectare
HC	Health Center
HC (NB)	Health Center (no building)
HH	Headed Household
HSI	Intervention for Health
HP	Health Post
HW	Hand Washing
ICC	Inter Commune Council
IFAD	International Fund for Agricultural Development
IND	Industry
Inter-commune	Inter-Commune Project Management Committee or Inter-commune project
IO	International Organization
JICA	Japan International Cooperation Agency
LASED	Land Allocation for Socio-Economic Development
LAU	Local Administration Unit
LGCR	Local Governance for Children's Rights

M&E	Monitoring and Evaluation
MA	Medical Assistant
MAFF	Ministry of Agriculture, Forestry and Fisheries
MEF	Ministry of Economy and Finance
MoEYS	Ministry of Education, Youth and Sports
MoH	Ministry of Health
MoI	Ministry of Interior
MoP	Ministry of Planning
MoWA	Ministry of Women's Affairs
MoWRAM	Ministry of Water Resources and Meteorology
MPA	Minimum Package of Activities
MW1	Primary Midwives
MW2	Secondary Midwives
n/a	Not available
NCD	National Contracts Database
NCDD	National Committee for Sub-National Democratic Development
NGO	Non-Governmental Organization
NREM	Natural Resources and Environment Management
NRML	Natural Resources Management and Livelihood
NU1	Primary Nurse
NU2	Secondary Nurse
OD	Operational District
ODF	Open Defecation Free
Ope. Costs	Operational Costs
Others	Other Staff
PBW	Public Works
PDoEYS	Provincial Department of Education, Youth and Sport
PDRD	Provincial Department of Rural Development
PDWRM	Provincial Department of Water Resource and Meteorology
PE	Parenting Education
PHAST	Participatory Hygiene and Sanitation Transformation
PHD	Provincial Health Department
PID	Project Information Database
PIF	Provincial Investment Fund
PMC	Project Management Committee
Pop 04-05	Population Covered 2004 or 2005
PSDD	Project to Support Democratic Development through Decentralization and Deconcentration
RRD	Rural Road Development
RH	Referral Hospital
RILGP	Rural Investment and Local Governance Project
RPRP	Rural Poverty Reduction Program
RuLIP	Rural Livelihoods Improvement Program
SIDA	Swedish International Development Cooperation Agency
SPPA	Senior Provincial Program Advisor
TBA	Traditional Birth Attendant
UNDP	United Nations Development Project
UNICEF	United Nations Children's Fund
Vil	Village
Vil Cov	Village Covered
VIL-HC	Distance from Village to Health Center
WASH	Water, Sanitation and Hygiene
WRM	Water Resource and Meteorology

## Glossary

**C/S Fund:** The Commune/Sangkat Fund is established and managed by the Government of Cambodia to provide financial support for development projects and administrative costs of Commune/Sangkat Councils. The amount is determined as a percentage of the National Budget (for 2009: 2.8% over the 2008 budget) and is expected to increase gradually over the years. The total 2009 budget under this fund is \$ 27,643,902 (of which \$ 19,272,170 is for Development Projects and \$ 8,371,731 for Administration). Under the Rural Investment and Local Governance Project the World Bank currently reimburses the costs of development projects if these meet the Bank's criteria.

**CDB:** the Commune Data Base is a national database, compiled by the Ministry of Planning, on the basis of detailed questionnaires, completed at village and commune level, which are then sent to the Departments of Planning for data entry. The most recent round of data collection took place at the end of 2008 (and is reflected in the District Data Books). Commune, District and Provincial Profiles can be generated from this database and should be available from provincial Departments of Planning.

**CDPD:** the Commune Development and Planning Database is a database maintained by Departments of Planning and Ministry of Planning, recording proposed activities as determined and prioritized by Commune and Sangkat Councils; the Temporary Agreements between these councils and supporting agencies, as decided at District Integration Workshops and details on projects that actually take place at commune, district and provincial levels.

**CIP:** The Commune Investment Plan is a rolling three-year plan, developed and decided by the Commune or Sangkat Council. It sets priorities and identifies the projects proposed for the years to come.

**Commune and Sangkat:** the Communes (in rural areas) and Sangkats (in urban areas) are the lowest and smallest units of local government. Councils are elected directly, once in five years, for the 1417 Communes and 204 Sangkats. Within these Communes and Sangkat areas there are 14,119 villages, which have Village Chiefs, but do not constitute a formal level of local government.

**DIA/P:** the District Investment Initiative/ Project is jointly supported by the MDLF (Multi-Donor Livelihood Facility (supporting the NRM&L Program) and PSDD. In 2009 it covers 106 districts, 60% of the total in the country, with a budget of \$ 3.2 million. It is focused on capacity development in planning, democratic development, public competitive procurement, financial management and service delivery.

**DIS:** The District Information System is a national database maintained by NCDD, recording resources, staff, revenue, infrastructure and equipment available in the 193 Districts and Khans throughout the country. The last update took place in July 2009.

**District, Municipality and Khan** constitutes the third level of Government in Cambodia. There are 159 rural Districts, 26 Municipalities and 8 Khans of Phnom Penh Capital. They all have Councils which were, for the first time, elected in May 2009, by the Commune/Sangkat Councilors. These councils have a mandate for 5 years.

**DIW:** District Integration Workshops are held between July and October, to bring Commune/Sangkat Councils, looking for support for their projects, together with the governmental and non-governmental agencies that may provide support.

**ICC:** Inter Communes Council projects are executed in 10 provinces under the Democratic and Decentralized Local Governance Project (DDLG). This five year project (2006-2010) is executed by Ministry of Interior and funded by the European Commission and UNDP. The project focuses on improving dialogue partnership and accountability; create a network of Commune Councils at the provincial and national level and support and contribute to local area development for poverty reduction. The work under the ICC component supports investments and services formulated through inter-commune dialogue and planning.

**MEDiCAM:** A non-profit and non-partisan membership organization for NGOs active in Cambodia's health sector. It is the primary networking agency for the country's health-related NGOs.

**NCD:** The National Contracts Database is used for the design of investment projects at provincial and district levels and, once a project is approved, for monitoring the progress of investment projects. The NCD has been continuously adapted for use by different donor projects and currently is used for PSDD, DANIDA NRMLP, UNICEF, IFAD, Canadian CIDA projects. The database was first designed in 2005 and is maintained by the NCDD with quarterly updates.

**NCDD:** the National Committee for sub-National Democratic Development is the inter-ministerial body charged with the implementation of the Organic Law (a key legislative document, adopted in 2008, outlining the envisaged decentralization). NCDD also channels substantial financial assistance by a number of Development Partners, to projects and programs at various levels. This amounted to over \$ 91 million in 2008. More information at: [www.ncdd.gov.kh](http://www.ncdd.gov.kh), this website also provides access to reports, manuals, legal documents, details on projects and more.

**OD:** the Operational Districts are the districts as defined and used by the Ministry of Health. These do not coincide with the 193 (Administrative) Districts and Khans, as used by all other RGC agencies. The Operational Districts are usually larger, and so there are 77 Operational Districts against 193 administrative Districts and Khans. However they do fit within the boundaries of administrative provinces.

**PID:** The Project Information Database is the database maintained by NCDD at national and sub national level, to follow all aspects of projects by Commune and Sangkat Councils, including the C/S Fund projects.

**PIF:** The Provincial Investment Fund is allocated to all Provinces and Municipalities according to a population based formula. Part of the fund is earmarked for support to planning activities of the Provincial / Municipal Department of Planning; and to gender mainstreaming activities of the Provincial Department of Women's Affairs. The remaining "un-earmarked PIF" is allocated by PRDC to sectoral technical departments against established criteria and in response to proposals with prioritisation taking into account: priorities formulated by the CS Councils and aggregated by District into District Priority Activities Matrices (DPAM); alignment with national planning and poverty alleviation criteria, complementarity with other planned activities; and performance of the Department concerned in implementation of activities in previous years. With this provisional allocation, the Department then programs activities through the District Integration Process. Finally, the agreed activities, plus support costs amounting to no more than 25% of the total, are included in a sub-contract signed between PRDC and the Department, pursuant to the overall PSDD contract signed between NCDD and PRDC. Total budget has been around \$ 2 million per year.

**Province:** the 23 Provinces and Phnom Penh Capital City represent the 2<sup>nd</sup> layer of government. They vary in size, from very small, like Kep (approx. 36,000 people) and Pailin (approx. 70,000 people), or large but with small populations, like Mondulakiri (over 60,000 people), and Ratanakiri (over 153,000) to densely populated and large, like Kampong Cham (over 1.7 million people) and Kandal (approx. 1.4 Million people).

**PSDD:** the Project to Support Democratic Development through Decentralization and Deconcentration is funded by DFID (UK), SIDA (Sweden) and UNDP and runs from 2006 till the end of 2010 (including a one year extension). Annual budgets range from \$ 11 million to over \$ 18 million. The project provides core technical support to NCDD and to the provinces, financial support to the C/S Fund, District Initiative, Provincial Investment Fund and capacity building support through training, studies and advisory services.

**RILGP:** The Rural Investment and Local Governance Project is the World Bank funded project that provides substantial support to C/S Fund projects and to developing the required infrastructure, policies, systems and skills needed. It started in 2003 with a Loan for \$ 22 million for 2003-2007 and was then extended with a Grant of \$ 36 million for the period of 2007-2010. Discussions about a possible RILGP 2 are taking place between RGC and the World Bank.

**RPRP:** the Rural Poverty Reduction Project is a seven years project from 2004 till 2010, funded by IFAD and UNDP and implemented through the Ministry of Agriculture, Forestry and Fishery, supported by the Ministry of Interior and facilitated by NCDD. The project is active the provinces Prey Veng and Svay Rieng and focuses on 120,600 households below poverty line. The objective is poverty reduction with the active participation of the poor through improved livelihoods, Strengthened capacity, Sustainable farming systems and natural resource management, new and/or rehabilitated infrastructure development, increase accessibility to technology, services and markets for their economic and social development.

**RULIP:** the Rural Livelihoods Improvement Project is implemented by the Ministry of Agriculture Forestry and Fisheries (MAFF)' Project Support Unit- PSU, with the NCDD playing the role of cooperating agency. Funded by IFAD and UNDP, the project will run till 2014. The target group consists of poor households who have little or even no land, few livestock or other assets and often many dependents. The main goal of the project is to directly or indirectly improve the livelihood systems, food security and incomes of a total of 33,900 rural poor, ethnic minority and female headed households in targeted village of Kratie, Preah Vihear and Ratanakiri provinces in a sustainable manner.

**Seth Koma:** The UNICEF funded Seth Koma program focuses on measurable action for children and women. During 2006 -2010 it is implemented in six provinces. Government and UNICEF pursue a set of inter-related goals, addressing critical stages of the life cycle of the child: a) Mothers have safe pregnancies and deliveries and healthy newborns; b) best possible start in life of infant; c) Children enter schools at the right age of six years; d) Children are protected from exploitation, abuse, violence, discrimination and other risks; and e) Youth and adolescents acquire life skills, express their views, participate in the decisions.



## Preface

The Government of Cambodia attaches great importance to optimal use of scarce resources and to participatory planning and management at all levels. The Organic Law which was adopted in 2008 provides the legal context for further steps towards improving and decentralizing planning, management and monitoring, and towards greater accountability and transparency of institutions at sub-national levels.

The Government has established elected Councils at the sub-national levels, and we will progressively give them the responsibilities, together with the human and financial resources, to deliver a wide range of public services. They will be more democratic, more efficient, more transparent and accountable, better at addressing gender and other inequalities, and at fighting corruption. We recognize that development does not come from government alone; it needs the involvement of citizens, civil society and the private sector, and the new system will facilitate this.

A central element in this process is the availability of information on any aspect of development to all concerned parties. The newly elected Councillors at Provincial level, Provincial line departments operating, but also NGOs, Development Partners and citizens throughout Cambodia need information on problems and requirements, resources and opportunities, services and agencies, plans and projects. They will need such information to better understand the present situation, set targets for the future, monitor progress, know what others are doing and to apply resources wisely and this is the reason the Provincial Data books will be so valuable.

The Provincial Data Books are a major step towards full transparency and towards informed planning and decision-making. They provide all available data at Provincial and District level in easily accessible formats, in Khmer and English. This is in addition to the more detailed District Data Books which have been produced for all Districts, which show Commune level information as well.

This is the first time in Cambodia (and possibly in South East Asia) that such detailed information is made so widely available and NCDD should be commended for the hard work that has gone into this. We also thank the Ministry of Planning, which provided the detailed data of the Commune Data Base, the sectoral ministries and provincial authorities who contributed data and the Development Partners who provided financial support.

It is our sincere hope that the publication of the Data Books will strengthen capacities, especially at provincial and district levels, for evidence-based development planning. We also hope that this information will deepen the understanding among Ministries, Provincial Authorities, Development Partners, NGOs and research agencies of the realities at commune and district levels.

We call upon all to use and distribute this information, complement or correct where appropriate and to contribute new data in the years to come.

28<sup>th</sup> March 2010

**Sar Kheng**

Deputy Prime Minister, Minister of Interior  
and Chairman of NCDD





## Introduction

### Purpose

The purpose of the Provincial Data Books is to bring together information on any aspect of life and development of Provinces and Districts, and make this widely available. The primary targets are the newly elected Provincial Councilors, provincial level line departments, other provincial agencies, Development Partners and NGOs operating at this level. They need detailed knowledge on current living conditions, natural resources, infrastructure, agriculture and other economic activities, current service levels, past and planned projects and available resources.

While much information exists on many of the above aspects, it is often hard to access that information and much is lost to reports, databases and statistics that are not widely shared. Data are often only available in one language and often out-of-date, and many reports cover only one sector or region.

We found that these problems are especially acute at the district level and much effort has been put into producing **District Data Books for all Districts, Municipalities and Khans**, which show data at District/Municipality/Khan level and at Commune/Sangkat level. These can be obtained from NCDD or accessed through the NCDD website. However, in the context of decentralization the Provinces may also become a more significant level of local government and development planning, and a source of technical support to district level planning. This creates an urgent need for wide-ranging data to be used for setting base-lines, planning and prioritizing, monitoring and learning.

### Approach

We have attempted to identify and compile all available statistics, reports, maps and other data at province and/or district level. From this we have selected information that is available for all or most provinces, reasonably reliable and up-to-date, sufficiently detailed and of possible interest to development planners, decision makers, agencies and citizens.

The major sources of the information in these Provincial Data Books are:

- a) The Commune Data Base information over the years 2006 to 2009 (the most recent data were collected late last 2008)
- b) Detailed information directly collected from the Ministry of Health, the Ministry of Information, the Ministry of Education, Youth and Sports and (for maps) the Ministry of Land Management, Urban Planning and Construction
- c) The Project Information Database (PID) at NCDD (up-to-date)
- d) The Commune Development and Planning Database (CDPD) (up to date)
- e) The National Contracts Database (NCD) (up to date)
- f) Direct data collection at provincial and district level on private sector, irrigation, roads, and electricity, through provincial agencies
- g) Medical data collected from MediCam
- h) The ID Poor Project – for poverty data on a number of provinces and districts
- i) NCDD's work on predictive poverty rates
- j) Specific projects for project outputs, expenses and budgets (Seth Koma, RILGP, RPRP and ICC)

### Limitations of the data

We are fully aware that the data we collected are not always complete, consistent or correct. While we have rejected information that was wrong or very incomplete, we decided not to aim for statistical and scientific perfection, but to include information that is useful, relevant and comprehensive. We also accepted different sources for the same data as this may encourage discussion on the quality of the respective data.

We strongly encourage anyone who notes errors or incompleteness in these data to contact us and to share their data. We hope that the next round of producing such Provincial Data Books can draw on wider sources and more complete data.

We encourage the Provincial Agencies, who can receive these data also in digital format, not only to use these for their planning and monitoring, but also to start correcting and updating these data and to share new data with NCDD for future use.

## Contents

The information in the following pages is organized in five sections:

**a) Geographical data:** this section provides maps on infrastructure and administration and on land use and natural resources management. These maps are also provided in large format to all Provinces.

**b) Provincial Profile:** this presents wide ranging data, covering 2006 – 2009, at provincial and district level, extracted from the Commune Data Base, but edited for better understanding.

**c) Plans and Projects:** this section presents development priorities determined by Commune and Sangkat Councils, outputs and expenditure of major projects at Province and District level over 2006 – 2008, and plans and budgets for 2009.

**d) Services and Organizations:** this section provides details on key infrastructure (roads and related infrastructure, electricity, irrigation systems) and services in health and education at Province and District level. It also provides information on private sector agencies active in the Province.

**e) Poverty Data:** this section provides predicted poverty rates for 2009 for all districts and communes and detailed poverty data compiled and processed by the ID Poor project for those that have been covered by the project.

## The future

It is our sincere hope that this is the start of a longer-term process. We hope that a next edition of these Provincial Data Books will offer more comprehensive, and up-to-date information. We hope that the Provincial Administrations will not only start using this information, but also improve and update it. For this they are all provided with the full data set in digital format.

We invite agencies, projects and experts to send reports, statistics and maps that could be used for a next version to us and we invite all users of the Provincial Data Books to inform us about errors, updates and inconsistencies. Please contact us through [info@ncdd.gov.kh](mailto:info@ncdd.gov.kh)

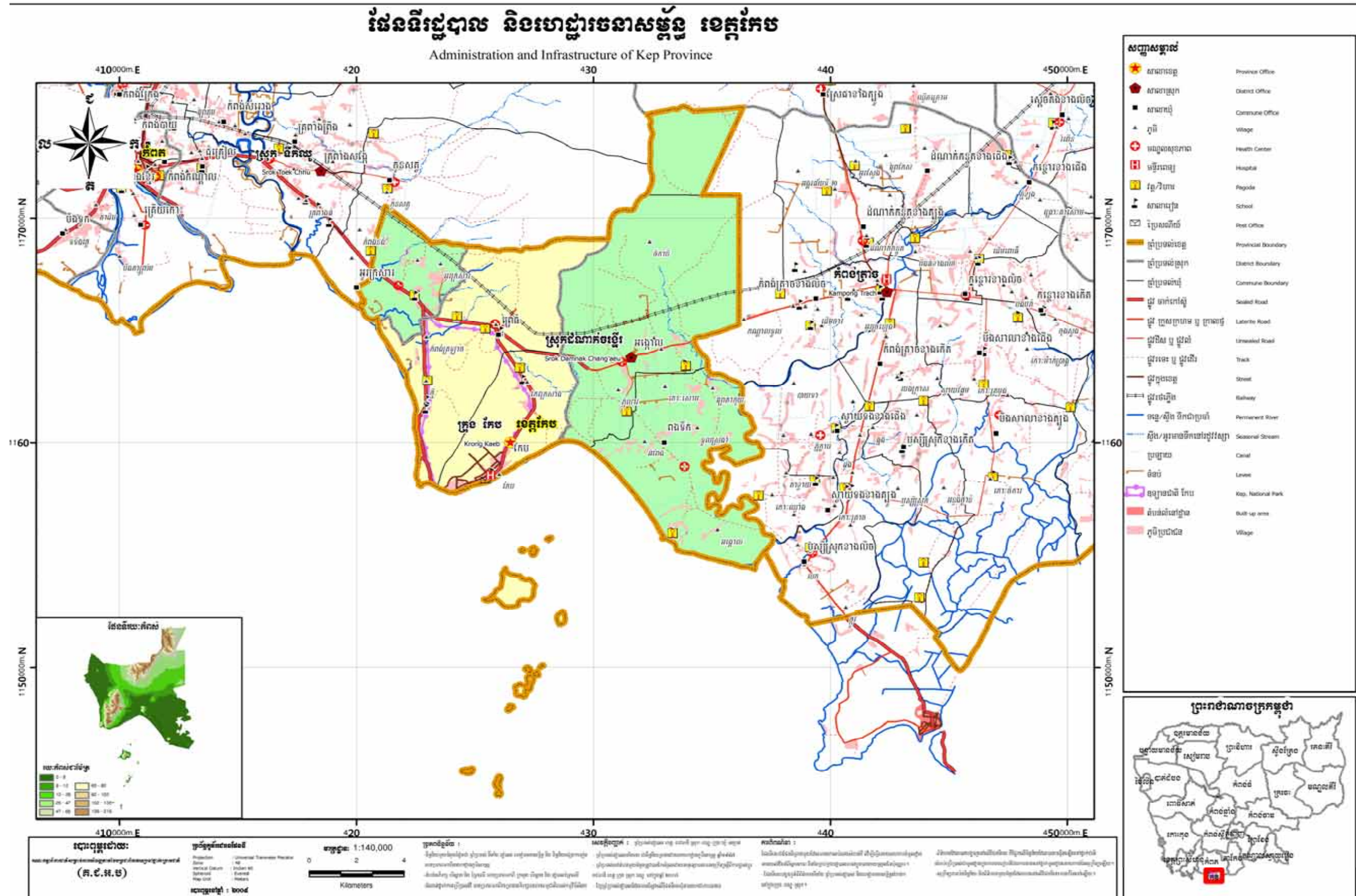
We now invite you to browse through this data book. You may open this randomly or use the table of contents and go to the aspects that have your special interest.

We hope that you will be informed, surprised and assisted. We hope, above all, that this information will lead to a deeper understanding of causes and effects of poverty, to purposeful decisions on how to tackle those causes and to greater transparency in using scarce resources for the benefit of all.

# SECTION A: MAPS

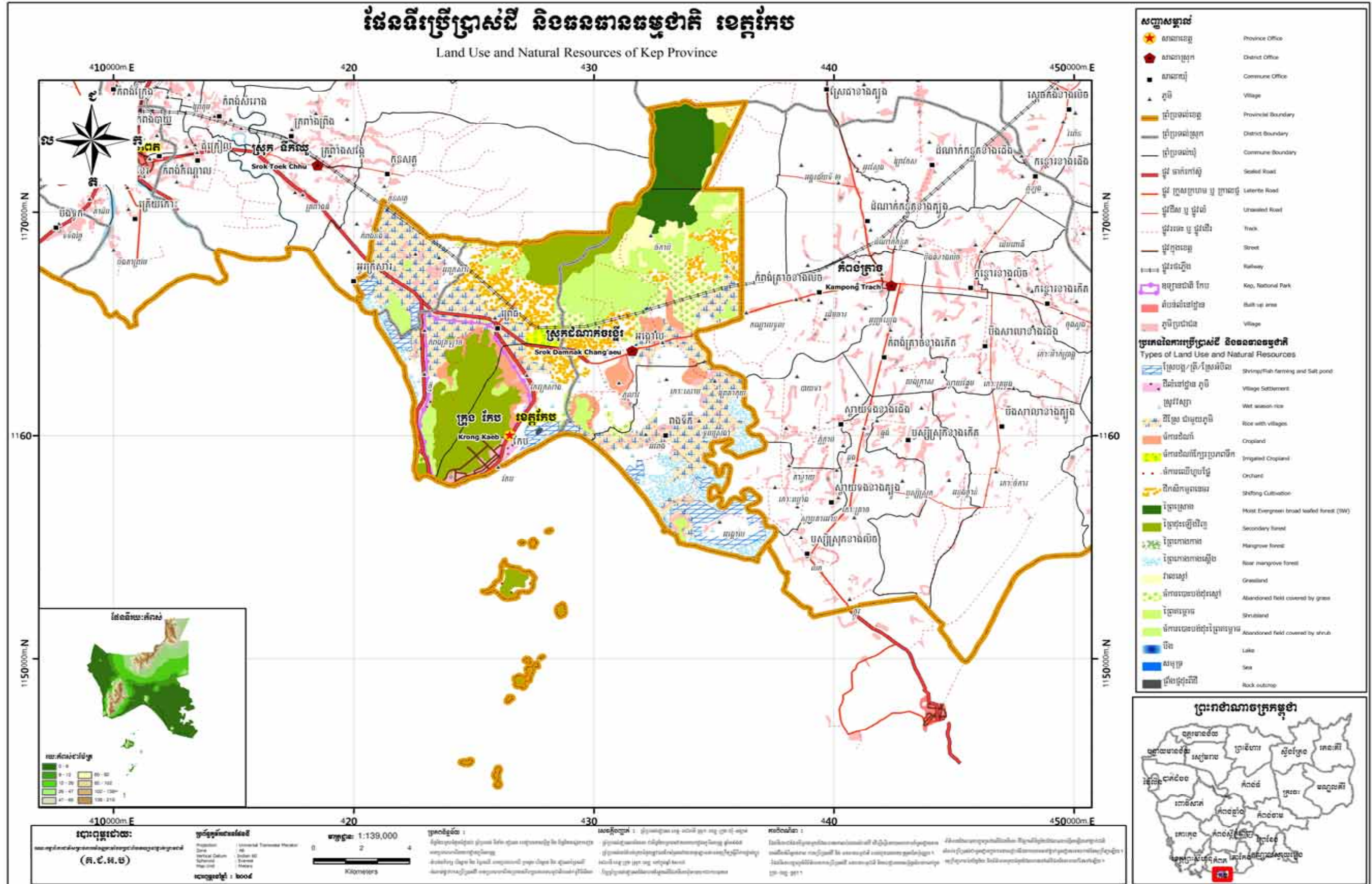


# 1. Administration and Infrastructure





## 2. Land Use and Natural Resources











## 4. Land area and distance

### 4.1. Land area by district, mid 2009

District	Total Land Area (ha)	Forest Land Area (ha)		Cultivation Land Area (ha)	Construction Land Area (ha)	Other Land Area (ha)
		Total	Flooded Forest Area			
Damnak Chang'aeur	16,517	6,115	288	8,645	697	1,060
Kaeb	8,096	4,876	129	940	774	1,506
<b>Total</b>	<b>24,613</b>	<b>10,991</b>	<b>417</b>	<b>9,585</b>	<b>1,471</b>	<b>2,566</b>

*Source: District Information System, DoLA*

### 4.2. Land used area by category, 2006

Land Type	Area in Ha
Village Settlement	243.72
Wet season rice	2,290.54
Rice with villages	3,588.35
Cropland	776.13
Irrigated Cropland	132.81
Orchard	68.21
Swidden	1,435.88
Secondary forest	2,455.43
Mangrove forest	1.91
Rear mangrove forest	1,112.87
Grassland	119.69
Abandoned field covered by grass	428.66
Shrubland	841.45
Abandoned field covered by shrub	817.76
Lake	2.92
Sea	81.37
Shrimp/Fish farming	770.36
Rock outcrop	5.58

*Source: GIS data, Land Used 2006, MLMUPC*

### 4.3. Distances between District Center and Provincial Town

District	Distance in Km
Damnak Chang'aeur	13
Kaeb	3

*Source: Provincial Administration*



# SECTION B: PROVINCIAL PROFILE<sup>1</sup>

---

<sup>1</sup> All data in this section come from the Commune Database (CDB) unless otherwise specified. These include primarily new CDB data, collected late 2008, and some data from earlier years.



## 5. General Information

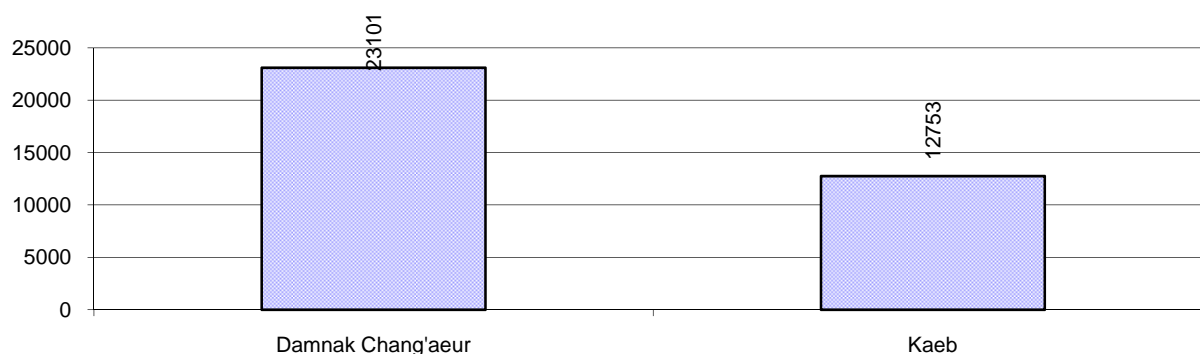
### 5.1. Population of the Province

#### 5.1.1 Total Population

Number of families	2005	2006	2007	2008
Total number of families	6,869 families	6,958 families	7,103 families	7,517 families
Increase (+)/Decrease (-) in nr of families		1%	2%	6%
Total population	34,660 pers	33,306 pers	35,206 pers	35,854 pers
Increase (+)/Decrease (-) in nr of people		-4%	6%	2%
Number of female Headed Households (HH)	1,446 families	1,441 families	1,489 families	1,380 families

**Note:** Percentages of population and increase/decrease are calculated on basis of the previous year. A negative sign in front of the percentage indicates a decrease in population.

#### 5.1.2 Population, by District, in 2008



#### 5.1.3 Population, by Age Group, 2006-2008

Population by age group	2006	2007	2008	
	%	%	%	Number
<b>Age 0-5 years (as percentage of the population)</b>	13%	14%	14%	5,047 persons
Male 0-5 yrs	52%	53%	55%	2,757 persons
Female 0-5 yrs	48%	47%	45%	2,290 persons
<b>Age 6-17 (as percentage of the population)</b>	34%	33%	31%	11,132 persons
Male 6-17 yrs	52%	53%	52%	5,841 persons
Female 6-17 yrs	48%	47%	48%	5,291 persons
<b>Age 18-60 (as percentage of the population)</b>	46%	48%	48%	17,180 persons
Male 18-60 yrs	47%	48%	48%	8,264 persons
Female 18-60 yrs	53%	52%	52%	8,916 persons
<b>Age 61 above (as percentage of the population)</b>	6%	6%	7%	2,495 persons
Male 61	47%	44%	50%	1,245 persons
Female 61	53%	56%	50%	1,250 persons

**Note:** The overall percentage for each age group is calculated on the basis of the total population. The gender distribution of each group is calculated on the basis of the population within that particular age group.

## 5.2 Occupations

### 5.2.1 Percentage of families with a particular Occupation, 2006-2008

This table shows the percentage of the population who have a particular occupation (job), for example the percentage of the population in the district who are rice farmers, furniture crafter, trader, etc.

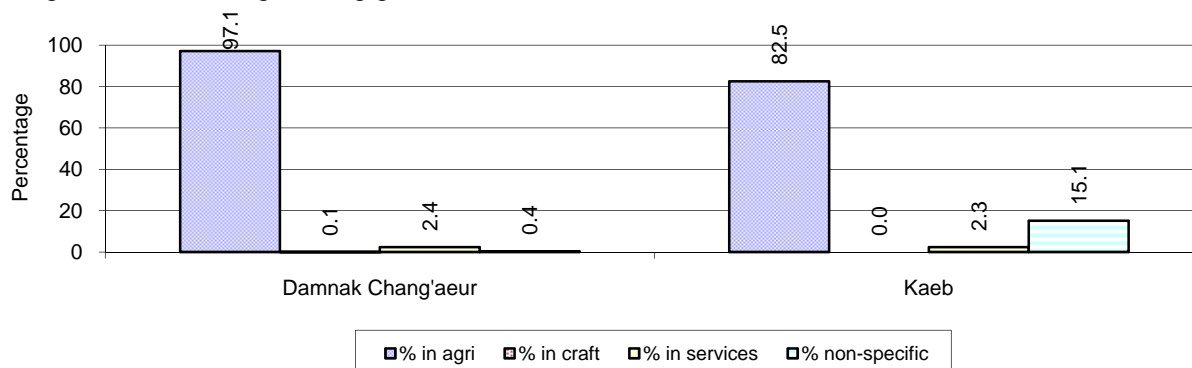
Description	2006	2007	2008	
	%	%	%	Number
<b>Families whose main occupation is agriculture</b>	89%	88%	92%	6,901 Families
Families whose primary occupation is rice farming	71%	71%	75%	5,640 Families
Families whose primary occupation is cultivating long-term crops	1%	1%	1%	62 Families
Families whose primary occupation is cultivating short-term crops	5%	7%	5%	377 Families
Families whose primary occupation is cultivating vegetable	4%	3%	4%	279 Families
Families whose primary occupation is fisherman	8%	7%	7%	505 Families
Families whose primary occupation is livestock farmer	0%	0%	0%	28 Families
Families whose primary occupation is NTFP collection	0%	0%	0%	10 Families
<b>Families whose main occupation is craft work</b>	0%	0%	0%	6 Families
Families, whose main occupation is in furniture craft, wooden, rattan, vine, bamboo	0%	0%	0%	0 Families
Families whose main occupation is in metal, aluminum, glass goods production	0%	0%	0%	2 Families
Families whose main occupation is food production	0%	0%	0%	0 Families
Families whose main occupation is tire, plastics and rubber goods production	0%	0%	0%	0 Families
Families whose main occupation is textile, clothing goods production	0%	0%	0%	2 Families
Families whose main occupation is in other production, not listed above	0%	0%	0%	2 Families
<b>Families whose main occupation is services</b>	3%	3%	2%	177 Families
Families whose main occupation is trade	1%	1%	1%	79 Families
Families whose main occupation is repair	1%	1%	1%	41 Families
Families whose main occupation is providing transport services	1%	1%	1%	47 Families
Families whose main occupation is providing other services	0%	0%	0%	10 Families
<b>Families whose main occupation is not clear (or multi)</b>	8%	9%	6%	433 Families

**Note:** The occupation percentages are calculated on the basis of the total number of families.



### 5.2.2 Percentage Families that work in one of four occupational sectors, by District in 2008

This table indicates the percentage of families involved in one of four occupation types: agriculture, craft, services or non-specific (other). Please note agriculture includes forestry activities such as cutting down trees and gathering gum from the trees.



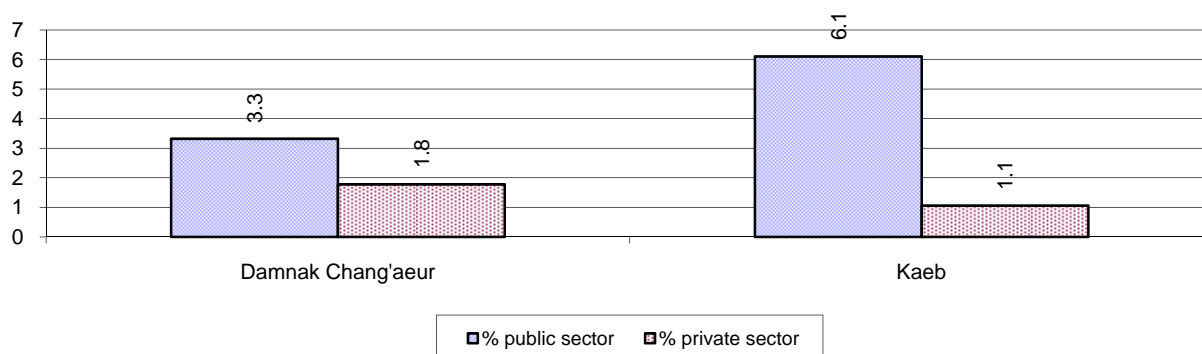
**Note:** Calculated on the basis of the total number of families within a province.

### 5.2.3 Percentage of Families with public Sector, private Sector or uncertain Jobs, 2006-2008

Description	2006	2007	2008	
	%	%	%	Number
Families that have a family member who is a government official, staff or worker	7%	7%	4%	326 families
Families that have a family member who is a private sector staff or worker	1%	1%	2%	114 families
Number of people aged 18-60 with uncertain/irregular jobs	13%	11%	10%	1,787 persons

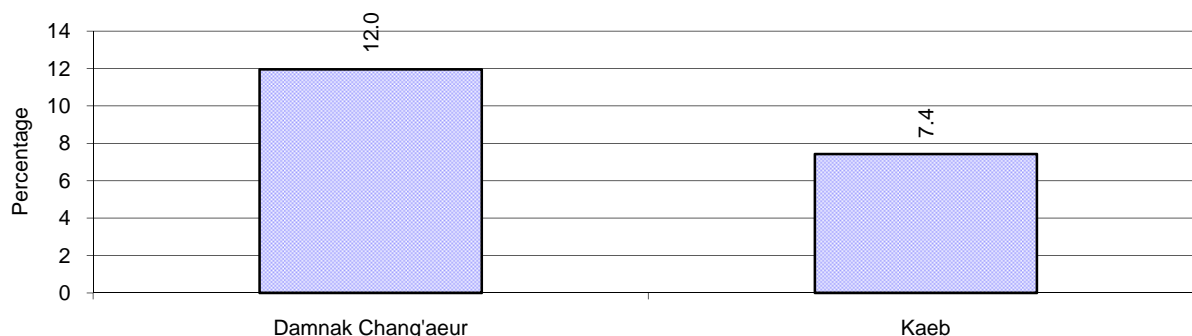
**Note:** In the first two rows percentages are calculated on the basis of the total number of families. In the third row the percentage is calculated on the basis of the total number of people aged 18-60 years.

### 5.2.4 Percentage of Families with public or private Sector Jobs, by District in 2008



**Note:** Calculated on the basis of the total number of families in the district

### 5.2.5 Percentage of People aged 18-60 years with uncertain/irregular Jobs, by District, in 2008.



## 5.3 Property

### 5.3.1 Housing types and facilities, 2006-2008

This table shows the percentage of people living in a certain type of house. It also indicates how many houses have electricity or battery powered lights and how many have TV.

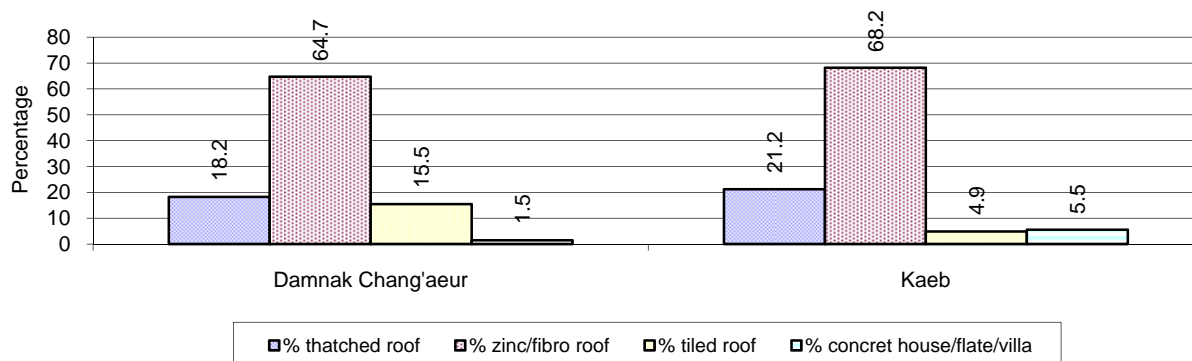
House Type	2006	2007	2008	
	%	%	%	Number
House with thatched roof	38 %	22 %	19 %	1,351 houses
House with zinc/fibro roof	48 %	62 %	66 %	4,608 houses
House with tiled roof	13 %	12 %	12 %	806 houses
Flats/apartments (with many families living)	0 %	0 %	0 %	25 houses
Concrete house or flat (with one family living)	1 %	3 %	3 %	188 houses
Villa house	0 %	1 %	0 %	6 houses
Houses with electricity	0 %	14 %	20 %	1,409 houses
Houses with battery light	49 %	41 %	44 %	3,082 houses
Houses with TV	18 %	14 %	33 %	2,275 houses

**Note:** Calculated against the total number of houses

### 5.3.2 Families living on public Land or without a permanent House

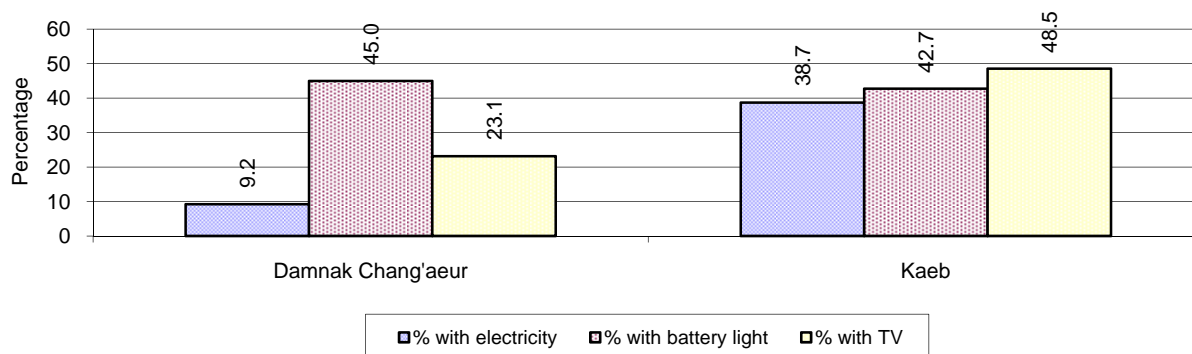
Living situation	2006	2007	2008
Families living in a house on public land	35 families	38 families	47 families
People, without permanent housing	5 person(s)	1 person(s)	3 person(s)

### 5.3.3 Percentage of Population living in a particular type of House, by District, in 2008



**Note:** Calculated against the total number of houses in each district

### 5.3.4 Percentage of Houses with Electricity, Battery Lights and/or TVs, by District, in 2008



**Note:** Calculated against the total number of houses in each district

### 5.3.5 Types of Vehicles and their ratio to Families, 2006-2008

This table shows the number of families per vehicle in the province. The last column shows the total number of each type of vehicle in the province for 2008.

Description	2006 ratio	2007 ratio	2008	
			Ratio	Number
Bicycle and bicycle with trailer	1	1	1	5,159
Ox-carts and horse-carts	3	3	3	2,190
Motorbike/with trailer	3	3	3	2,945
Motor tri-cycle	1,740	789	752	10
Large Transportation				
<b>Total number of cars/trucks</b>	129	69	51	148
Locally made vehicles	1,740	474	835	9
Trucks for goods transport	580	284	112	67
Buses/mini buses for passengers	870	1,015	228	33
Family cars	232	127	193	39
Agriculture machinery				
Tractors used for plowing	2,319	1,776	1,879	4
Power-tillage used for plowing	155	100	96	78
Other type of machinery				
Other type of machinery	N/A	N/A	N/A	0
Water transportation				
Row boats	22	20	18	425
<b>Total number of motor boats</b>	18	19	21	357
Motor boats used for fishing	18	19	21	350
Motor boats used for passengers	1,160	1,184	1,253	6
Motor boats used for goods transporting	N/A	N/A	7,517	1

**Note:** Ratio of families to a particular type of vehicle is the result of the total number of families divided by total number of that type of vehicle. Other types of vehicles, such as bulldozer, excavator, rollers etc. are not listed.

## 6 Infrastructure and Economy

### 6.1 Roads in meters, 2006-2008

Description	2006	2007	2008
Bituminous road	0 m	0 m	0 m
DBST, Macadam road	24,500 m	24,500 m	24,500 m
Concrete road	0 m	30 m	0 m
Laterite road	15,600 m	18,300 m	23,174 m
Constructed earth road	9,730 m	11,033 m	25,865 m
Un-constructed earth road	27,060 m	27,860 m	25,566 m

### 6.2 Sewerage Pipes in meters, 2006-2008

Description	Sewerage pipe length		
	2006	2007	2008
Total length of sewage pipe, diameter 30-50 cm	9 m	9 m	27 m
Length of newly constructed sewage pipe, diameter 30-50 cm	0 m	0 m	0 m
Length of sewage pipe, diameter 30-50 cm needs repair/rehabilitation	0 m	0 m	4 m
Total length of sewage pipe, diameter of pipe 60-100 cm	57 m	57 m	57 m
Length of newly constructed sewage pipe, diameter 60-100 cm	0 m	0 m	0 m
Length of sewage pipe, diameter 60-100 cm needs repair/rehabilitation	0 m	0 m	0 m
Sewerage pipe, diameter of pipe over 100 cm	70 m	40 m	70 m
Length of newly constructed sewage pipe, diameter over 100 cm	5 m	5 m	45 m
Length of sewage pipe, diameter over 100 cm needs repair/rehabilitation	0 m	0 m	0 m

### 6.3 Drainage and Bridges

Construction Type	2006		2007		2008	
	place(s)	Length	place(s)	Length	place(s)	Length
Single pipe culvert	31	49m	33	45 m	33	58 m
Double-pipe culvert	26	50m	28	44 m	29	84 m
Box pipe culvert	4	16m	5	16m	5	56 m
Wooden bridge	1	15m	1	8m	1	8 m
Concrete bridge	15	79m	15	81m	15	81 m
Bale bridge	0	0m	0	0m	0	0 m
Spillway construction	11	2,027m	11	2,027m	11	2,027 m

## 6.4 Services in the Province

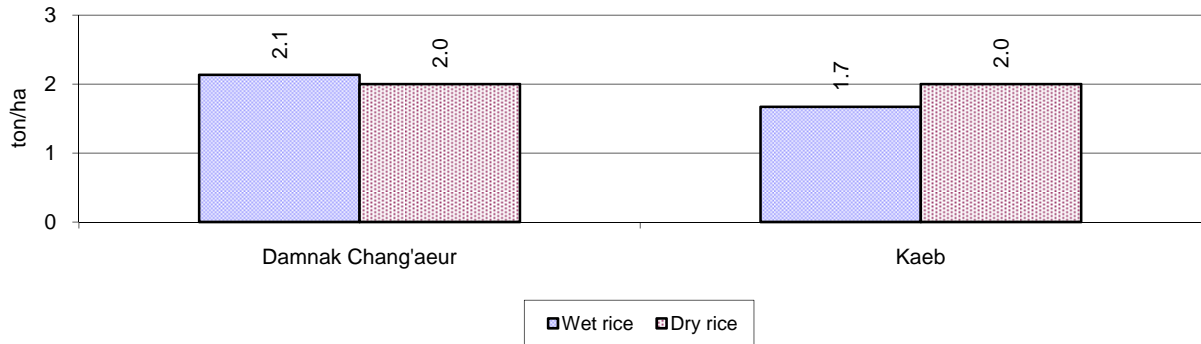
Descriptions	Number of places by year		
	2006	2007	2008
<b>Public</b>			
Electricity generating stations	1	1	1
Health clinics	1	1	5
<b>Private</b>			
Bicycle and motorcycle repair places	34	33	33
Agricultural machinery, tools and equipment repair places	0	1	5
Electronic tool repair places	1	1	5
Battery-charging services	26	133	21
Handicraft places, wooden furniture and forest by-products	0	1	4
Other handicraft places (excluding furniture)	3	2	3
Small-scale services (hairdresser, phone service, massage, Karaoke, etc)	25	26	30
Small-scale food shop businesses (Food, groceries, drink shop, etc)	43	44	66
Small-scale rice mills	107	99	98
Medium or large-scale rice mills	0	0	0
Small-scale markets	6	6	6
Large-scale market	0	0	0
Alcohol refinery places	34	29	15
Pharmacies and small drug stores	5	5	10
Hotels	0	0	0
Guest houses	9	9	10
Restaurants	10	10	11
Gasoline stations	0	0	0

## 6.5 Agriculture

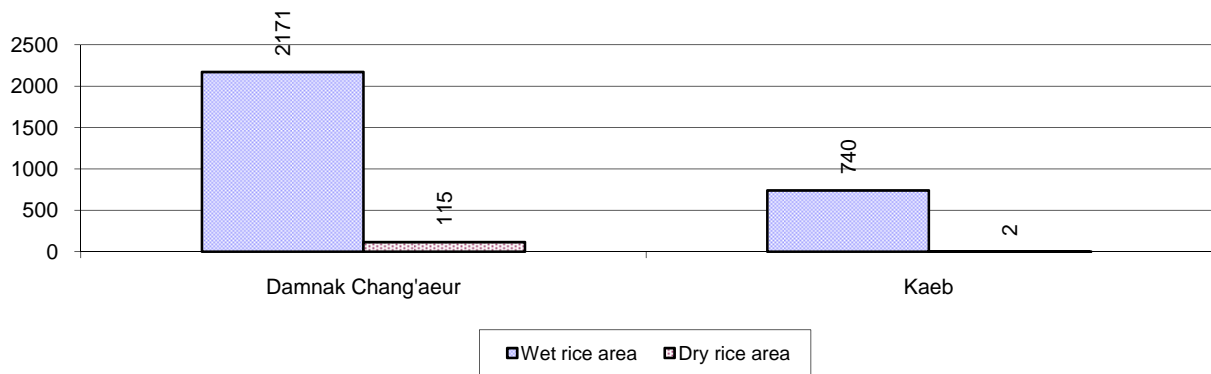
### 6.5.1 Rice cultivation in the Province, 2006-2008

Description	2006	2007	2008
Total dry rice land area	125 ha	119 ha	119 ha
Actual dry rice cultivation area	116 ha	116 ha	117 ha
% actual cultivation to total land	92%	97%	98%
Total dry rice production	185 tonne(s)	193 tonne(s)	234 tonne(s)
Average dry rice yield	1.6 tonne(s)/ha	1.7 tonne(s)/ha	2.0 tonne(s)/ha
<b>Total wet rice</b>			
Total wet rice land area	3,038 ha	3,038 ha	2,911 ha
Actual wet rice cultivation area	3,038 ha	3,038 ha	2,911 ha
% actual cultivation to total land	100 %	100%	100%
Total wet rice production	4,587.38 tonne(s)	4,860.80 tonne(s)	5,671.27 tonne(s)
Average wet rice yield	1.5 tonne(s)/ha	1.6 tonne(s)/ha	1.9 tonne(s)/ha
<b>Total intensive rice</b>			
Total intensive rice land area	78 ha	76 ha	81 ha
Actual intensive rice cultivation area	130 ha	- ha	136 ha
Average intensive rice yield	1.6 tonne(s)/ha	- tonne(s)/ha	1.8 tonne(s)/ha
<b>Total upland rice</b>			
Actual upland rice cultivation area	178 ha	178 ha	178 ha
Total upland rice production	267 tonne(s)	267 tonne(s)	356 tonne(s)
Average upland rice yield	1.5 tonne(s)/ha	1.5 tonne(s)/ha	2.0 tonne(s)/ha

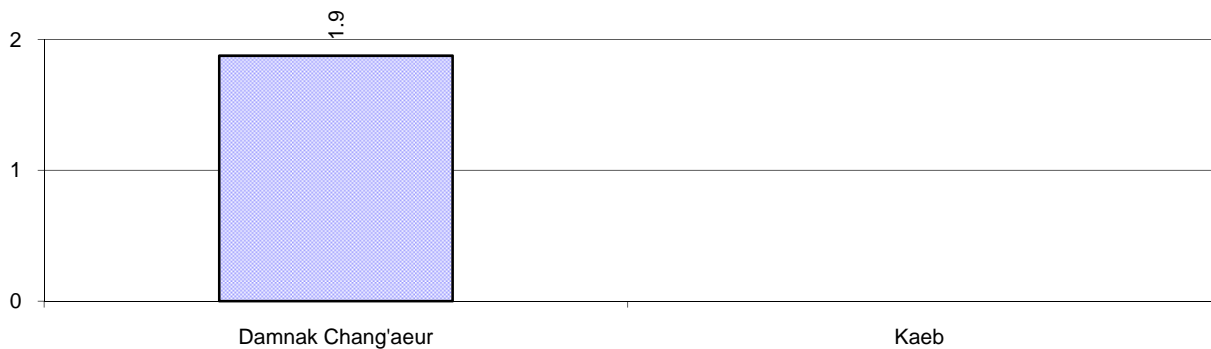
**6.5.2 Estimated wet and dry Season Rice Yield in tonne(s)/Ha, by District, in 2008**



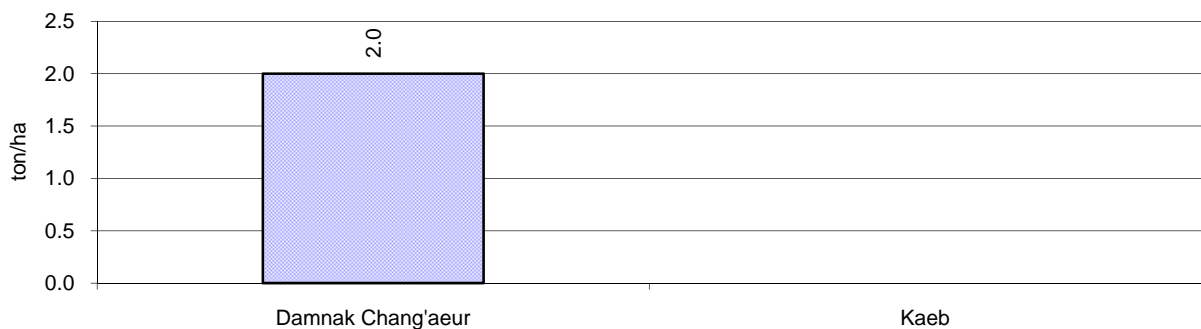
**6.5.3 Cultivated wet and dry Season Rice areas in Ha, by District, in 2008**



**6.5.4 Estimated intensive Rice Yields in tonnes/Ha, by District, for 2008**



**6.5.5 Estimated upland Rice Yield in tonnes/Ha, by District, for 2008**

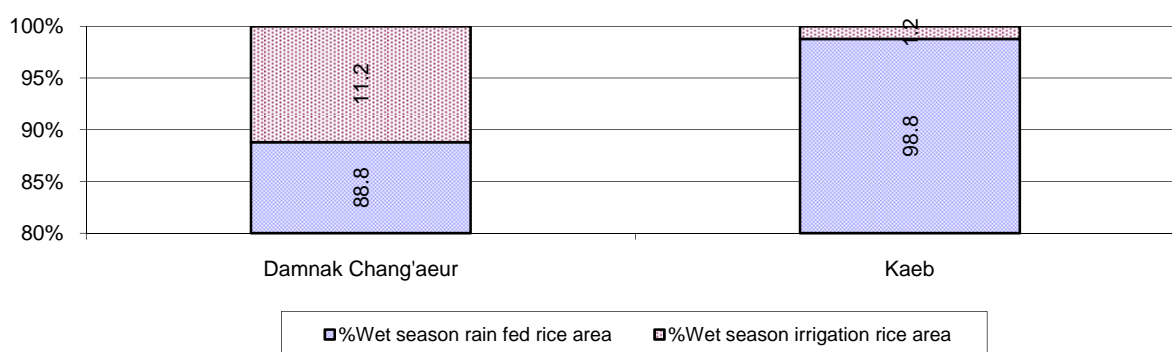


### 6.5.6 Wet season Rice irrigation, 2006-2008

Description		2006 %	2007 %	2008	
				%	Number
Total area of wet season rain fed rice land		85%	88%	91 %	2,659 ha
Percentage of wet season rice land that is irrigated; and for 2008 area in Ha		15 %	12 %	9 %	252 ha
Where	Area irrigated from canal/dam	100 %	100 %	100 %	252 ha
	Area irrigated from river, stream, lake, natural pond	0 %	0 %	0 %	0 ha
	Area irrigated from drilled well	0 %	0 %	0 %	0 ha
	Area irrigated from dug pond	0 %	0 %	0 %	0 ha

### 6.5.7 Water sources for wet Season Rice Cultivation, by District, in 2008

This chart shows the percentage of wet season rice cultivation receiving water from rain (natural) and from irrigation.



### 6.5.8 Access to Irrigation

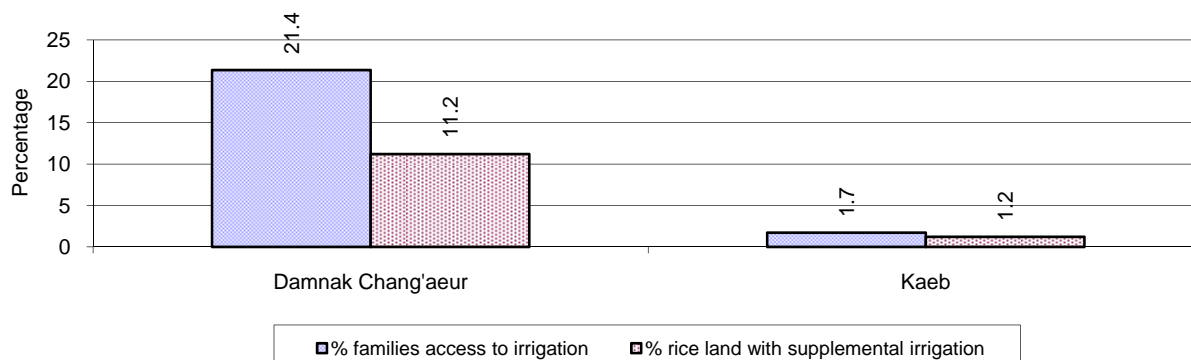
Description	2006 %	2007 %	2008	
			%	Number
Families who have access to irrigation water	15%	13%	15%	861 families
Families who have irrigation wells	1%	2%	1%	72 families

Note: Calculated against the total number of families are rice farmers

### 6.5.9 Number of Irrigation Wells, 2006-2008

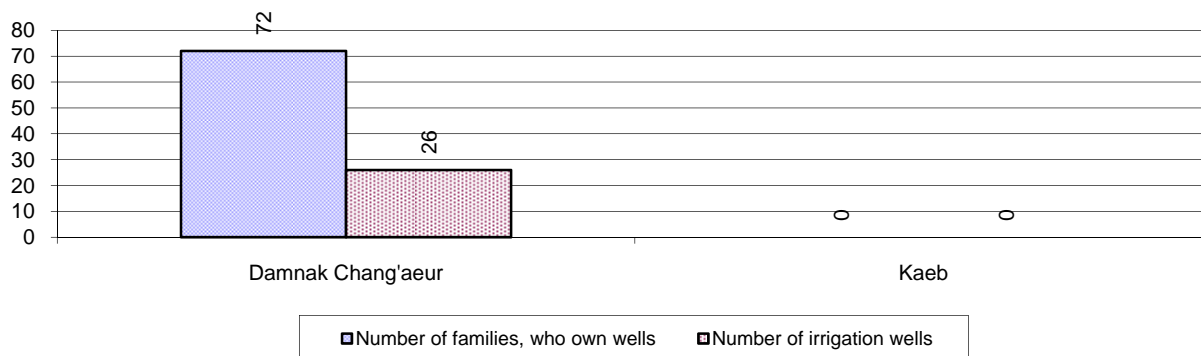
Description	2006	2007	2008
Number of irrigation wells	23 wells	26 wells	26 wells

### 6.5.10 Percentage of Families with access to (supplemental) Irrigation for wet Season Rice cultivation, by District, in 2008



Note: % of families, with access to irrigation is calculated against the total number of families, whose main occupation is rice farming. Irrigated wet rice land area is calculated against the total actual wet rice land cultivated areas

### 6.5.11 Irrigation Wells, by District, in 2008

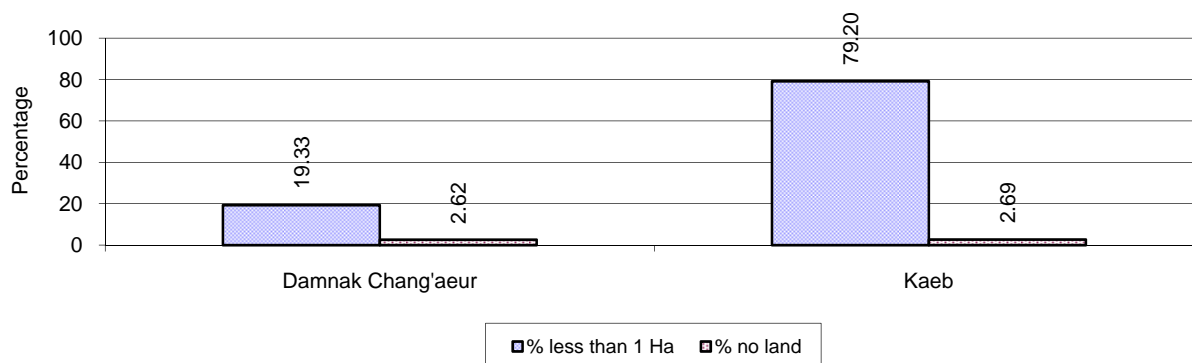


### 6.5.12 Farmers owning less than one hectare of Rice Land

Description	2006	2007	2008	
	%	%	%	Number
Families who have less than one hectare of rice land	62%	61%	38%	2,138 families
Families who do not own any rice land	3%	3%	3%	149 families

**Note:** Calculated on basis of total number of families who are rice farming

### 6.5.13 Percentage of Farmers with less than one Hectare or no Rice Land, by District, in 2008



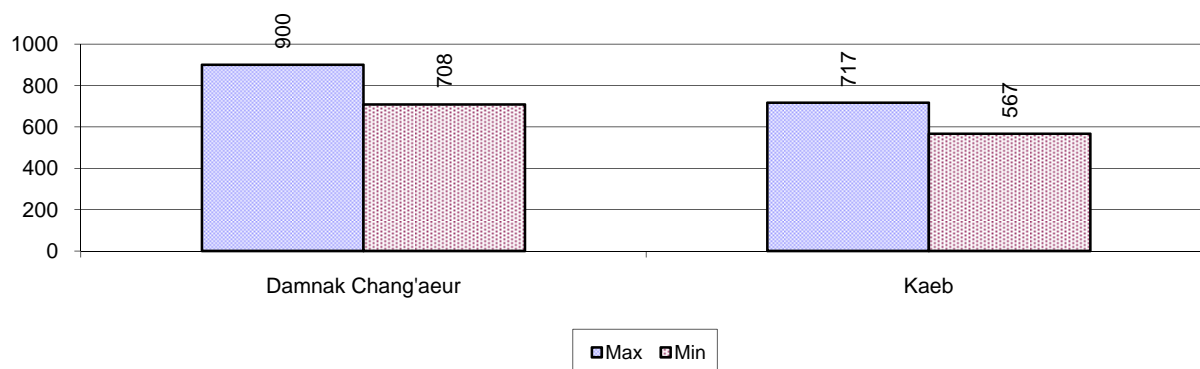
**Note:** Calculated on basis of total number of families who are rice farming

### 6.5.14 Average farm-gate Prices of Rice, 2006-2008

Description	2006	2007	2008
Maximum average farm gate price	685 Riels/Kg	807 Riels/Kg	808 Riels/Kg
Minimum average farm gate price	513 Riels/Kg	664 Riels/Kg	638 Riels/Kg
Average farm gate price	599 Riels/Kg	735 Riels/Kg	723 Riels/Kg
Average rice production per person	155 Kg/person	155 Kg/person	178 Kg/person

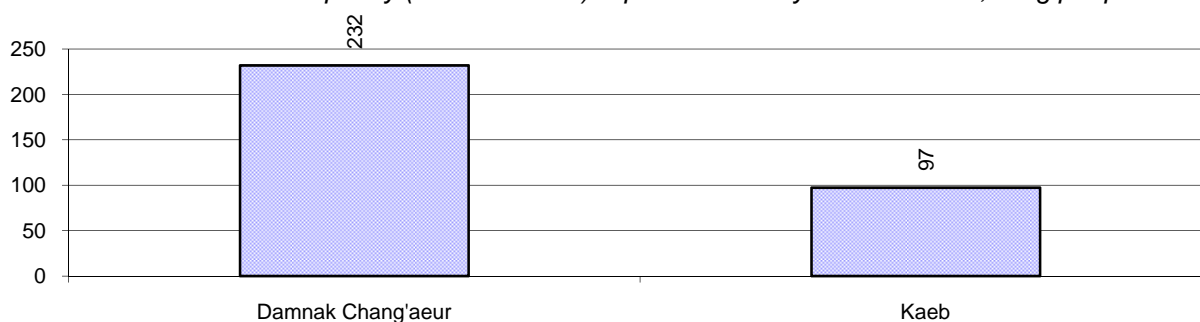


### 6.5.15 Minimum and maximum farm-gate Prices of Rice in Riel/kg, by District, in 2008



### 6.5.16 Production of Paddy in Kg/Person, by District, in 2008

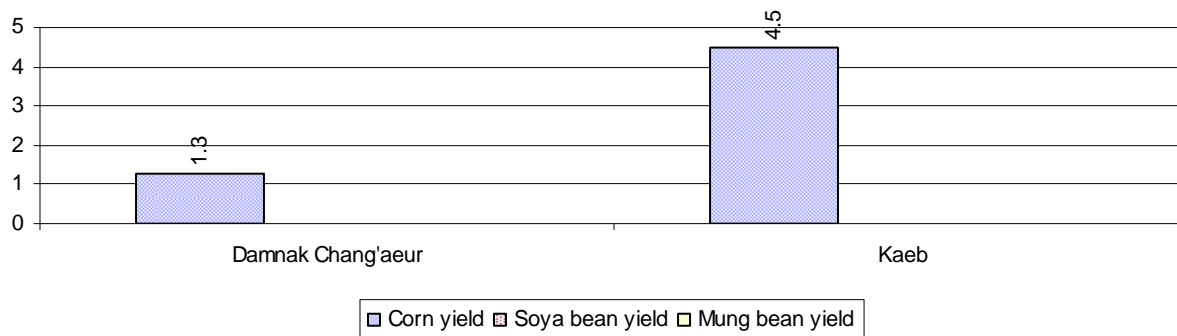
This table shows how much paddy (harvested rice) is produced in a year in a district, in kg per person.



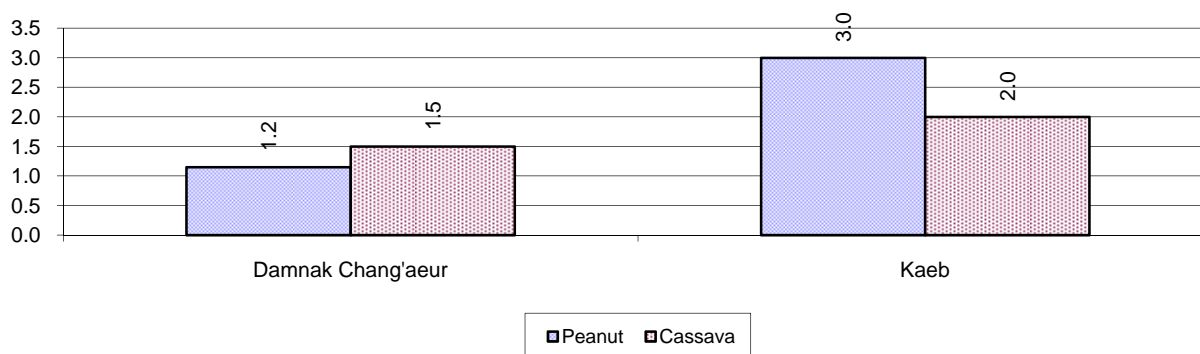
### 6.5.17 Production of other Crops, 2006-2008

Crops	2006	2007	2008
Corn cultivation area	20 ha	19 ha	50 ha
Estimated corn yield	1.4 tonne(s)/ha	1.3 tonne(s)/ha	2.6 tonne(s)/ha
Estimated corn production	28 tonne(s)	24 tonne(s)	129 tonne(s)
Soya bean cultivation area	0 ha	0 ha	0 ha
Estimated Soya bean yield	- tonne(s)/ha	- tonne(s)/ha	- tonne(s)/ha
Estimated Soya bean production	- tonne(s)	- tonne(s)	- tonne(s)
Mungbean cultivation area	1 ha	1 ha	0 ha
Estimated Mungbean yield	0.5 tonne(s)/ha	0.5 tonne(s)/ha	- tonne(s)/ha
Estimated Mungbean production	1 tonne(s)	1 tonne(s)	- tonne(s)
Peanut cultivation area	9 ha	8 ha	9 ha
Estimated Peanut yield	1.2 tonne(s)/ha	1.4 tonne(s)/ha	1.8 tonne(s)/ha
Estimated Peanut production	11 tonne(s)	11 tonne(s)	16 tonne(s)
Cassava cultivation area	5 ha	4 ha	3 ha
Estimated Cassava yield	1.7 tonne(s)/ha	1.7 tonne(s)/ha	1.8 tonne(s)/ha
Estimated Cassava production	8 tonne(s)	7 tonne(s)	4 tonne(s)
Sweet potatoes cultivation area	49 ha	50 ha	58 ha
Estimated Sweet potatoes yield	2.2 tonne(s)/ha	2.3 tonne(s)/ha	2.5 tonne(s)/ha
Estimated Sweet potatoes production	108 tonne(s)	113 tonne(s)	144 tonne(s)
Sesame cultivation area	2 ha	1 ha	0 ha
Estimated Sesame yield	2.0 tonne(s)/ha	1.0 tonne(s)/ha	- tonne(s)/ha
Estimated Sesame production	4 tonne(s)	1 tonne(s)	- tonne(s)

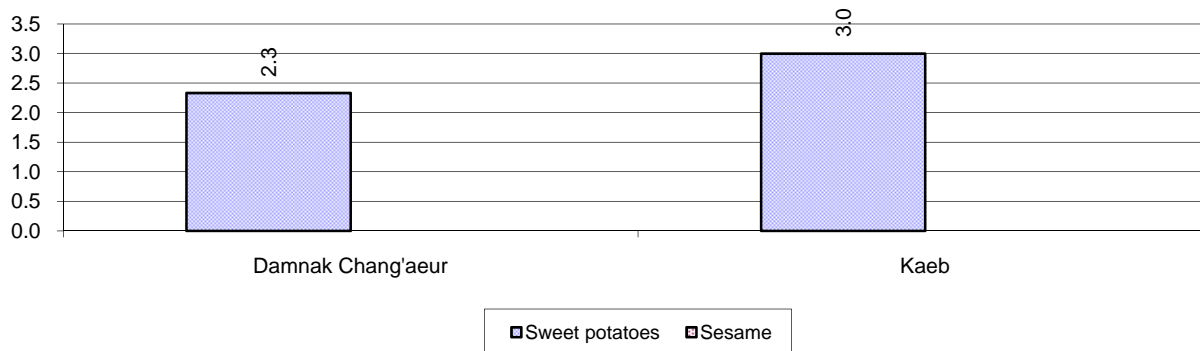
**6.5.18 Yields of Corn, Soya beans and Mungbeans in tonne(s)/ha, by District, in 2008**



**6.5.19 Yields of Peanuts and Cassava in tonne(s)/ha by District, in 2008**



**6.5.20 Yields of Sweet Potatoes and Sesame in tonne(s)/ha, by District, in 2008**



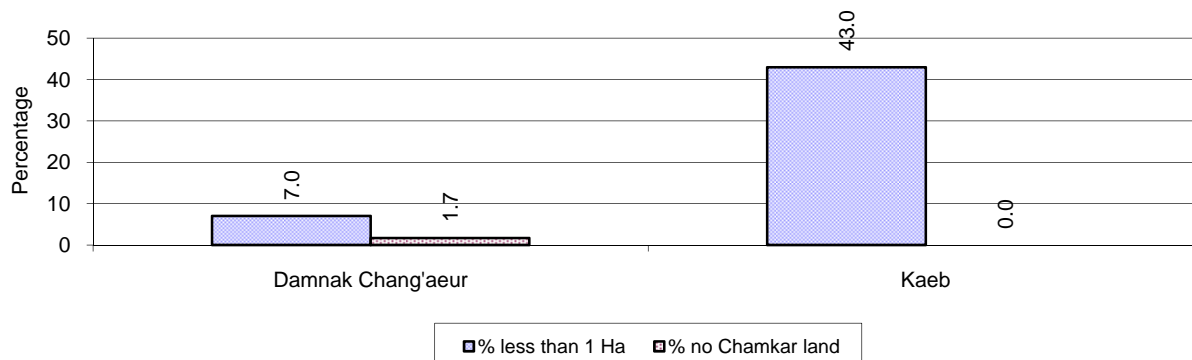
**6.5.21 Percentage Farmers who own less than 1 Ha or no Chamkar land**

Description	2006	2007	2008	
	%	%	%	Number
Families, who own less than 1ha of Chamkar land	52%	56%	22%	160 families
Families, with no Chamkar land	4%	5%	1%	7 families

**Note 1:** Calculated as a percentage of the total number of families whose main occupation is Chamkar (not rice) farming

**Note 2:** Chamkar land is no-rice land, i.e. other crops

### 6.5.22 Percentage Farmers owning less than 1 ha or no Chamkar land, by District, in 2008



**Note:** Percentage is calculated among families, who Chamkar farm as a main occupation, not the total population of the district.

### 6.5.23 Percentage of Families raising Cattle/Buffalo, 2006-2008

Description	2006	2007	2008	
	%	%	%	Number
Families raising cattle/buffalo	82%	80%	74%	5,543 families
Families raising cattle/buffalo as labor forces	73%	67%	61%	4,586 families

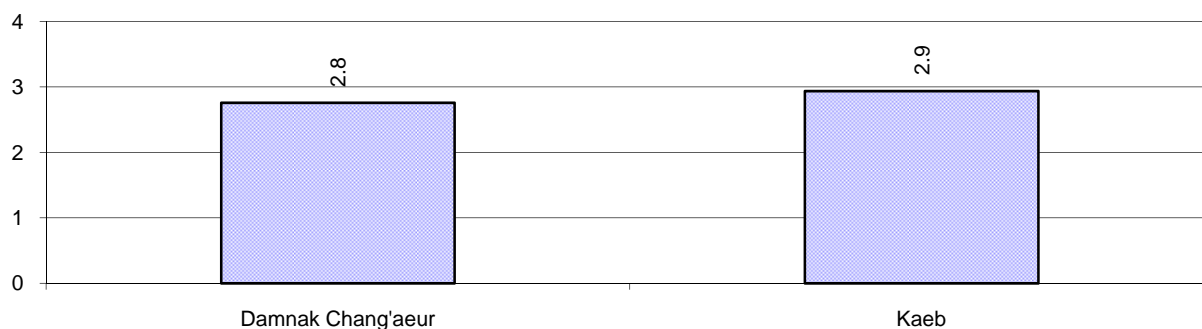
**Note:** Calculated against the total number of families.

### 6.5.24 Number of Cattle/buffalo being raised, 2006-2008

Description	2006	2007	2008
Total number of cattle/buffalo	13,639 head(s)	15,455 head(s)	15,560 head(s)
Average cattle/buffalo per families	2.4 head(s)/families	2.7 head(s)/families	3 head(s)/families

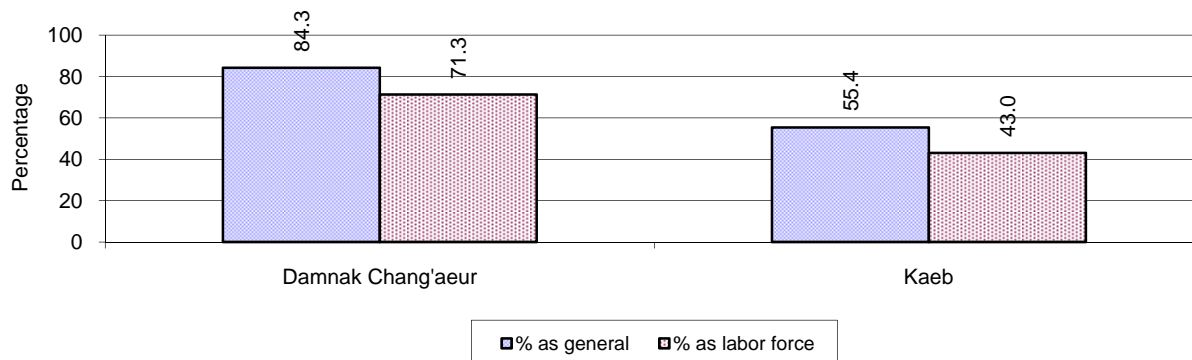
**Note:** Calculated by dividing total number of cattle/buffalo by total number of cattle/buffalo raising families

### 6.5.25 Average number of Cattle/Buffalo per Family, by District, in 2008



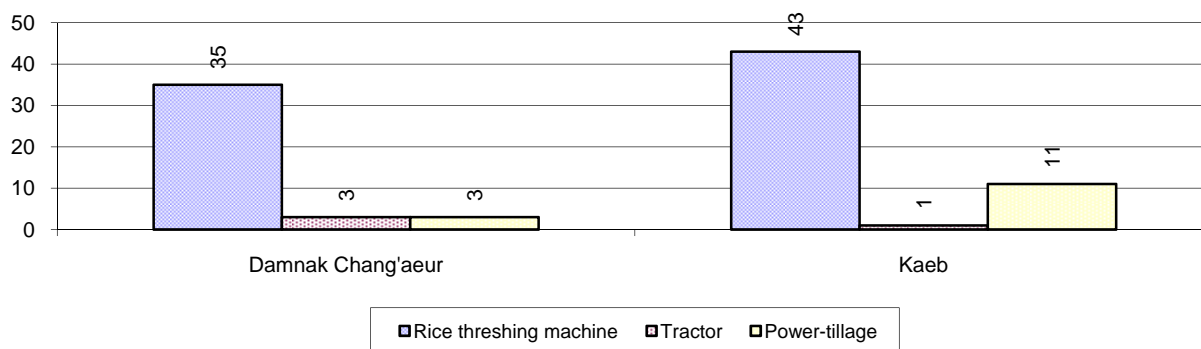
**Note:** Calculated by dividing total number of cattle/buffalo by total number of cattle/buffalo raising families

### 6.5.26 Percentage Families raising Cattle/Buffalo, for general and labor purposes in 2008, by Commune



**Note:** Calculated using the total number of families raising cattle/buffalo against the total number of families.

### 6.5.27 Type and number of agricultural Machines, by District, in 2008

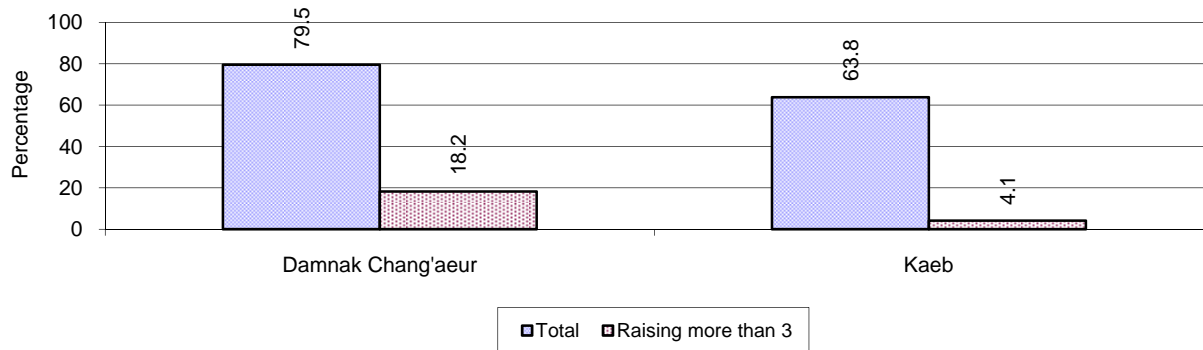


### 6.5.28 Livestock-producing Households, 2006-2008

Description	2006 %	2007 %	2008	
			%	Number
Total number of families raising pigs	81%	81%	74%	5,547 families
number of families raising more than 3 pigs	14%	13%	13%	984 families
Total number of families raising chickens	95%	94%	84%	6,290 families
number of families raising more than 3 chickens	63%	73%	68%	5,122 families
Total number of families raising ducks	22%	15%	12%	915 families
number of families raising more than 5 ducks	15%	12%	10%	721 families
Total number of families raising goats or sheep	0%	0%	0%	10 families
Total number of families raising horses	0%	0%	0%	11 families

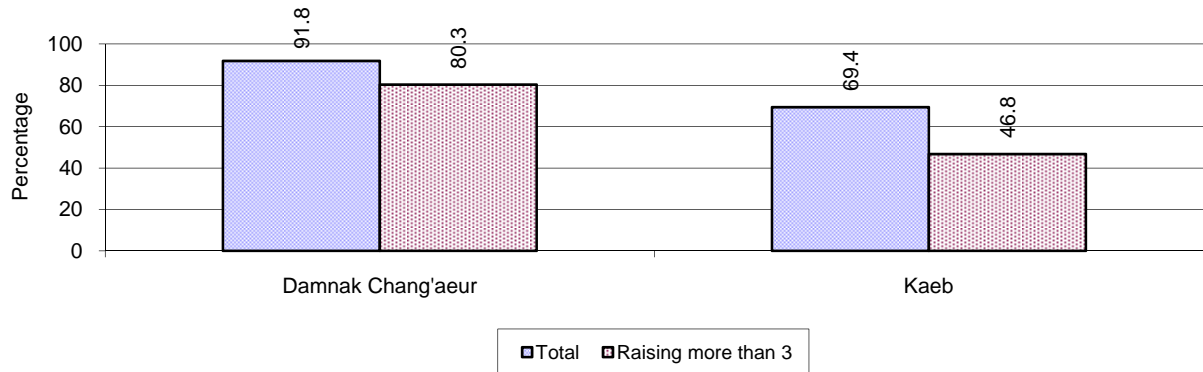
**Note:** Calculated against the total number of families

### 6.5.29 Percentage Families raising Pigs, by District, in 2008



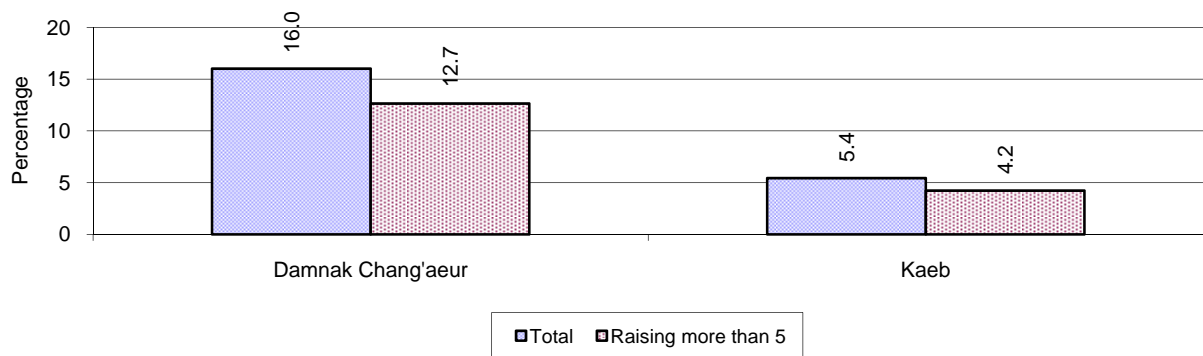
**Note:** Calculated against the total number of families in the district

### 6.5.30 Percentage Families raising Chickens, by District, in 2008



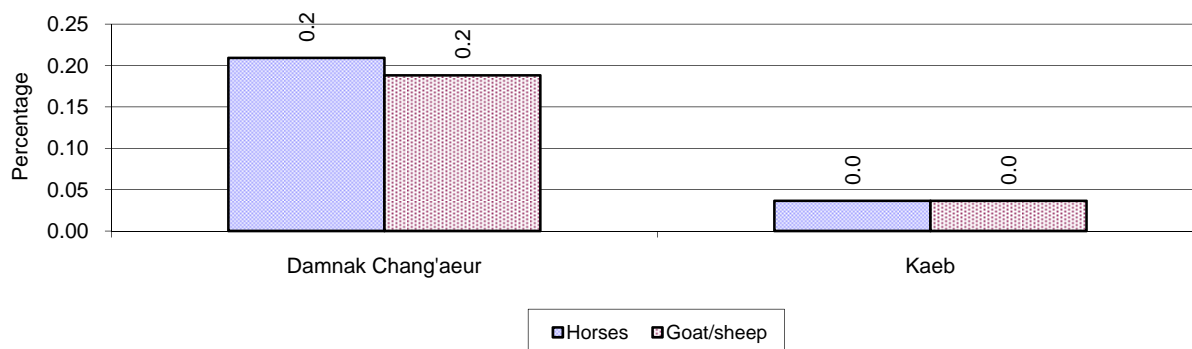
**Note:** Calculated against the total number of families in the district

### 6.5.31 Percentage Families raising Ducks, by District, in 2008



**Note:** Calculated against the total number of families in the district

### 6.5.32 Percentage Families raising Horses, Goats or Sheep, by District, in 2008

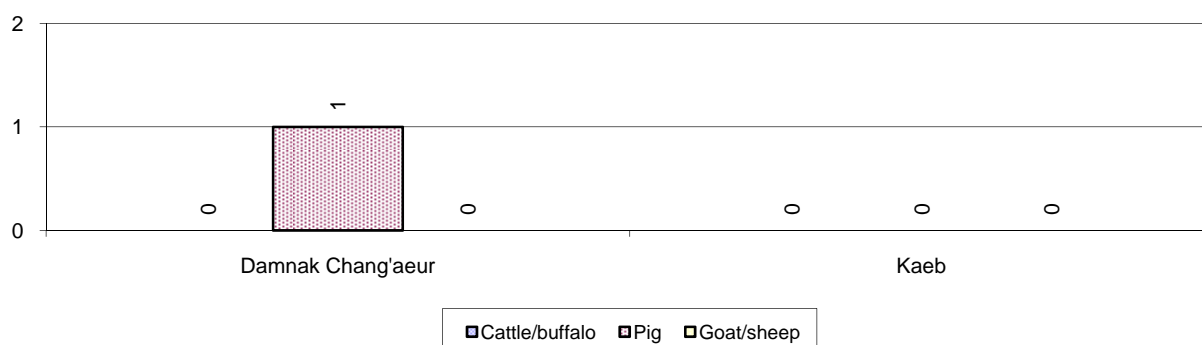


**Note:** Calculated against the total number of families in the district

### 6.5.33 Livestock Farms, 2006-2008

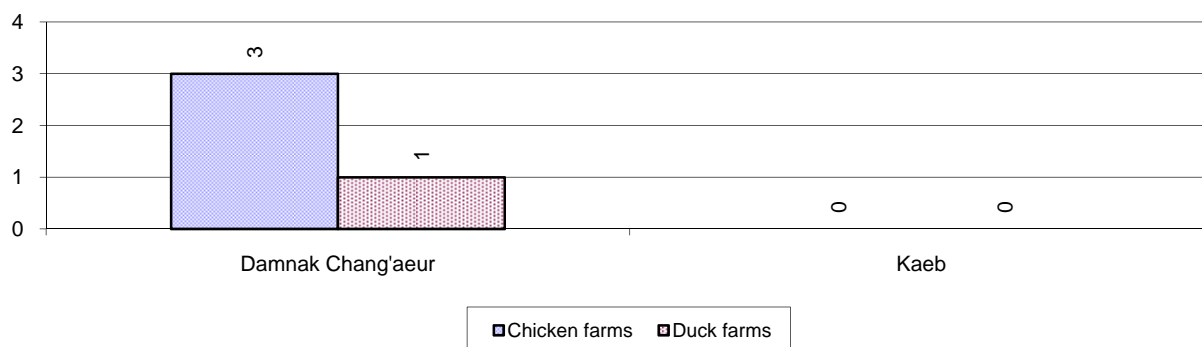
Description	2006	2007	2008
Number of cattle/buffalo farms	0 farm(s)	0 farm(s)	0 farm(s)
Number of pig farms	2 farm(s)	1 farm(s)	1 farm(s)
Number of goat/sheep farms	0 farm(s)	0 farm(s)	0 farm(s)
Number of chicken farms	0 farm(s)	0 farm(s)	3 farm(s)
Number of duck farms	0 farm(s)	0 farm(s)	1 farm(s)

### 6.5.34 Number Livestock Farms, by District in 2008



**Note:** Number of farms are recorded by the village chief, not by counting number of livestock in each farm

### 6.5.35 Number Chicken and Duck Farms, by District, for 2008



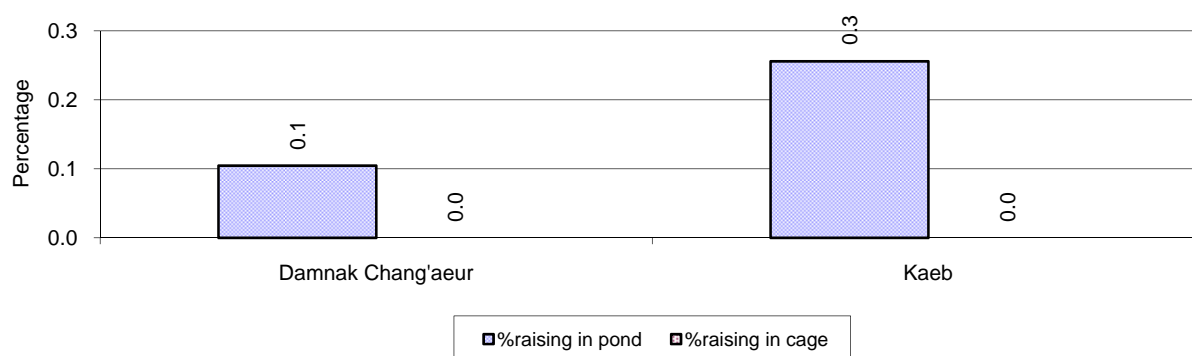
**Note:** Number of farm places recorded by village chief, not by counting number of livestock in each farm

### 6.5.36 Families raising Fish, 2006-2008

Description	2006	2007	2008
Total number of families raising fish	12 families	15 families	12 families
% families raising fish	0%	0%	0%
Number families raising fish in pond	12 families	15 families	12 families
% families raising fish in pond	0%	0%	0%
Number fish pond	12 pond(s)	15 pond(s)	12 pond(s)
No. of ponds per family	1.0 pond/families	1.0 pond/families	1.0 pond/families
Number of families raising fish in cage	0 families	0 families	0 families
%families raising fish in cage	0%	0%	0%
Number of fish cage	0 cage(s)	0 cage(s)	0 cage(s)
No. of fish cage per family	- cage /families	- cage /families	- cage /families

**Note:** % of families raising fish or fish in ponds or cages is calculated a percentage of the total number of families.

### 6.5.37 Percentage of Families raising Fish, by District, in 2008



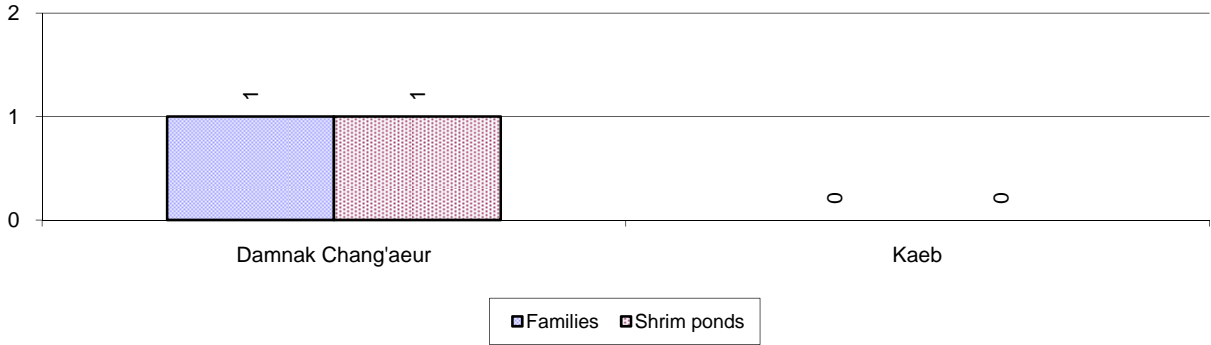
**Note:** Calculated as a percentage of the total number of families in the commune.

### 6.5.38 Shrimp and Prawn Farming, 2006-2008

Description	2006	2007	2008
Number of families raising shrimps	1 families	1 families	1 families
% Families raising shrimps	0%	0%	0%
Number of shrimp ponds	1 pond	1 pond	1 pond
Total area raising shrimps	2 ha	1 ha	1 ha
Area per family	2ha/families	1ha/families	1ha/families
Number of families raising prawns	0 families	0 families	0 families
% families raising prawns	0%	0%	0%
Number prawn ponds	0 pond	0 pond	0 pond
Ponds per families	- pond/families	-pond/families	-pond/families
Number of prawn cages	0 cage	0 cage	0 cage
Cages per families	0 cage /families	0 cage /families	0 cage /families

**Note:** Percentage of families raising either prawns or shrimp is calculated against the number of families, who do aquaculture farming, NOT the total population.

**6.5.39 Numbers of Families raising Shrimps and number of Shrimp Ponds, by District, in 2008**



**6.5.40 Number of Families raising Prawn and Number of Prawn Ponds/Cages, by District, in 2008**

There were no families raising prawn in this province in 2008



## 7 Social Aspects

### 7.1 Education

#### 7.1.1 Kindergarten in the Province, 2006-2008

Description	2006	2007	2008
Number of community kindergarten schools	0 school(s)	3 school(s)	3 school(s)
Number of community kindergarten class rooms	0 room(s)	3 room(s)	3 room(s)
Number of community kindergarten classes	0 class(es)	5 class(es)	5 class(es)
Number of community kindergarten teachers	0 person(s)	0 person(s)	4 person(s)
Number of women community kindergarten teachers	0 women	0 women	3 women
<hr/>			
Number of state and private kindergarten schools	8 school(s)	8 school(s)	10 school(s)
Number of state and private kindergarten class rooms	11 room(s)	11 room(s)	14 room(s)
Number of state and private kindergarten classes	12 class(es)	11 class(es)	14 class(es)
Number of state and private kindergarten teachers	11 person(s)	9 person(s)	14 person(s)
Number of women state and private kindergarten teachers	9 women	8 women	13 women

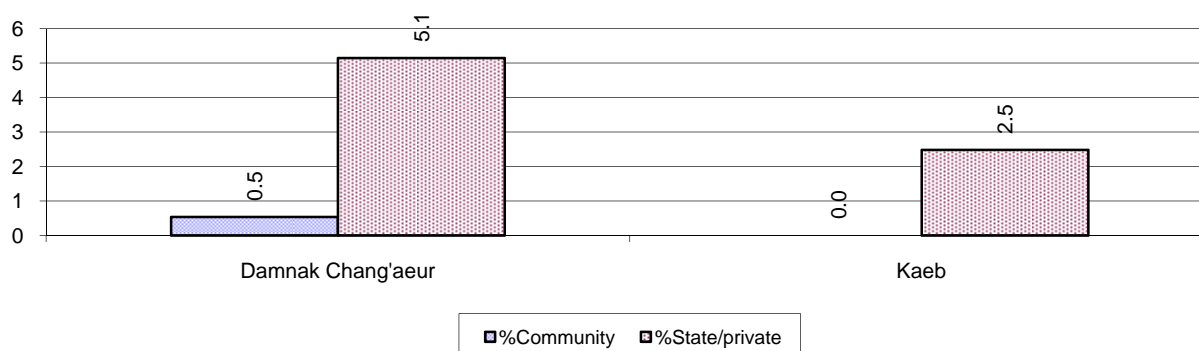
#### 7.1.2 Percentage enrolment at Kindergarten level, 2006-2008

This table shows the percentage of the total 3-5 year old population attending kindergarten.

Description	2006 %	2007 %	2008	
			%	Number
Total percentage of children, 3-5 yrs, go to kindergarten	13%	11%	4%	135 person(s)
<hr/>				
Percentage of children, 3-5 yrs, go community kindergarten	8%	8%	0%	10 person(s)
Percentage children, 3-5 yrs, go state/private kindergarten	5%	2%	4%	125 person(s)

**Note:** Calculated against the total for that age group

#### 7.1.3 Percentage of Children 3-5 yrs attending Kindergarten, by District, in 2008



### 7.1.4 Basic Education, 2006-2008

#### Primary School

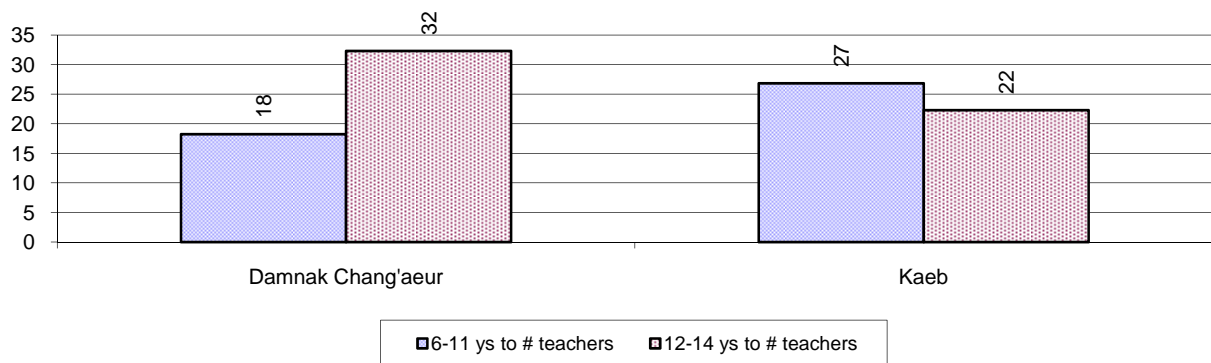
Description	2006	2007	2008
Number of primary schools	23 school(s)	24 school(s)	26 school(s)
Number of primary school rooms	126 room(s)	120 room(s)	139 room(s)
Number of primary classes	171 class(es)	161 class(es)	180 class(es)
Number of primary teachers	188 person(s)	209 person(s)	268 person(s)
<b>Ratio</b>			
Ratio of children 6-11 yrs to school	247	234	214
Ratio of children 6-11 yrs to school room	45	47	40
Ratio of children 6-11 yrs to class	33	35	31
Ratio of children 6-11 yrs to teacher	30	27	21

**Note:** According to education norm, children 6-11 yrs should attend primary school, while 12-14 yrs should be in lower secondary school, but in reality this varies.

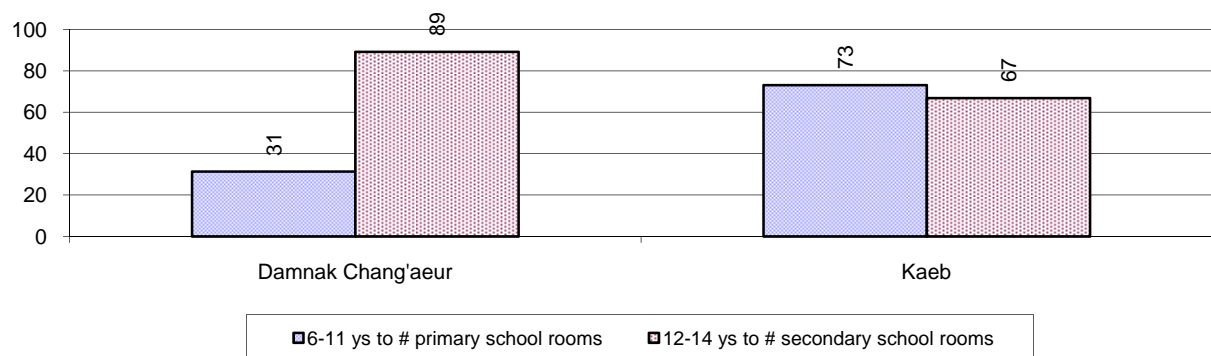
#### Lower Secondary School

Description	2006	2007	2008
Number of lower secondary schools	4 school(s)	4 school(s)	4 school(s)
Number of lower secondary school rooms	21 room(s)	35 room(s)	35 room(s)
Number of lower secondary classes	40 class(es)	29 class(es)	30 class(es)
Number of lower secondary teachers	116 person(s)	169 person(s)	100 person(s)
<b>Ratio</b>			
Ratio children 12-14 yrs to school	702	714	703
Ratio of children 12-14 yrs to school room	134	82	80
Ratio of children 12-14 yrs to class	70	98	94
Ratio of children 12-14 yrs to teacher	24	17	28

### 7.1.5 Ratio of 6-11 year old and 12-14 year old Children to number of Teachers, by District, in 2008



### 7.1.6 Ratio of 6-11 year old and 12-14 year old Children to number of School Rooms, by District, in 2008



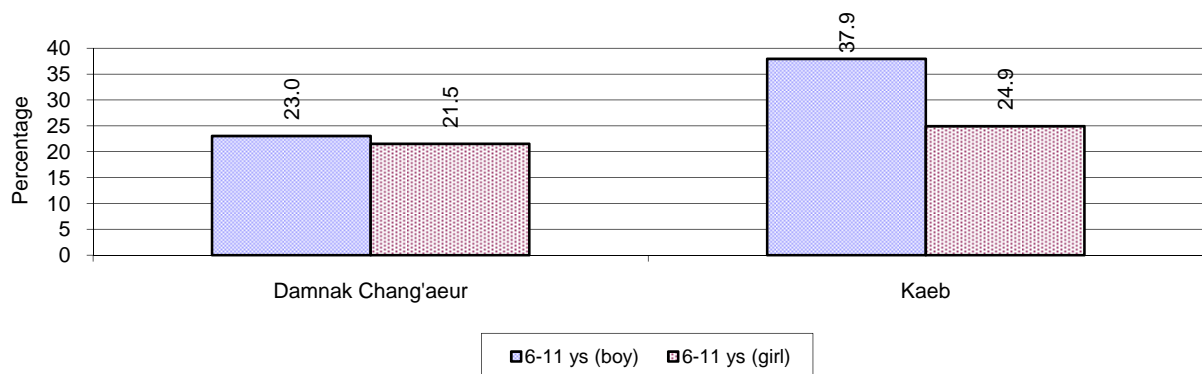
### 7.1.7 Enrolment status at Primary Level, 2006-2008 one decimal only

Description	2006 %	2007 %	2008	
			%	Number
Total children aged 6-11 years old	17%	16%	16%	5,569 person(s)
Total children aged 6-11 who are in school	83%	81%	74%	4,115 person(s)
Total children aged 6-11 who are not in school	17%	19%	26%	1,454 person(s)
<b>Total girls aged 6-11 years old</b>				
Total girls aged 6-11 years old	16%	14%	15%	2,617 person(s)
Total girls aged 6-11 who are in school	83%	79%	77%	2,022 person(s)
Total girls aged 6-11 who are not in school	17%	21%	23%	595 person(s)
<b>Total boys aged 6-11 years old</b>				
Total boys aged 6-11 years old	18%	17%	16%	2,952 person(s)
Total boys aged 6-11 who are in school	83%	83%	71%	2,093 person(s)
Total boys aged 6-11 who are not in school	17%	17%	29%	859 person(s)

**Note 1:** Percentage is calculated on the basis of the total number of children within 6-11 year age group for the first 3 rows and for the total girls and the total boys aged 6-11 yrs.

**Note 2:** Number of girls aged 6-11 who are in & not in school is calculated against the total number of girls aged 6-11 yrs. Number boys, 6-11 yrs who are in & not in school are calculated against the total number of boys aged 6-11 yrs.

### 7.1.8 Percentage of 6-11 year old Children not in School, by District, in 2008



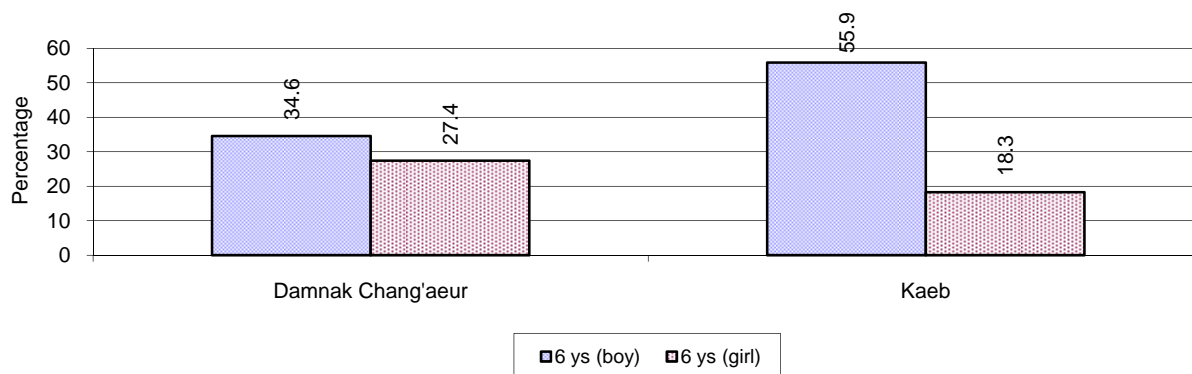
**Note:** calculated on the basis of the total number of children within 6-11 year age group in the commune.

### 7.1.9 Enrolment of 6 year old Children, 2006-2008

Description	2006 %	2007 %	2008	
			%	Number
Total % and number of children aged 6 years old	4%	3%	4%	1,369 person(s)
Total % of children aged 6 years old in school	70%	68%	60%	820 person(s)
Total % of children aged 6 years old not in school	30%	32%	40%	549 person(s)

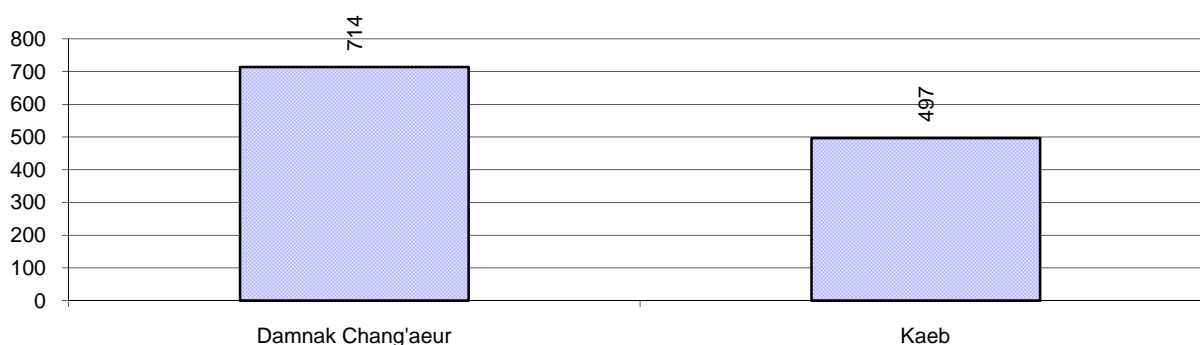
**Note:** First row calculated as a percentage of total population. Second and third row calculated as a percentage of the total number of 6 year olds.

### 7.1.10 Percentage of 6 year old Children not in School, by District, in 2008



**Note:** Calculated as a percentage of total 6 year old population

### 7.1.11 Number of 5 year old Children in each District in 2008

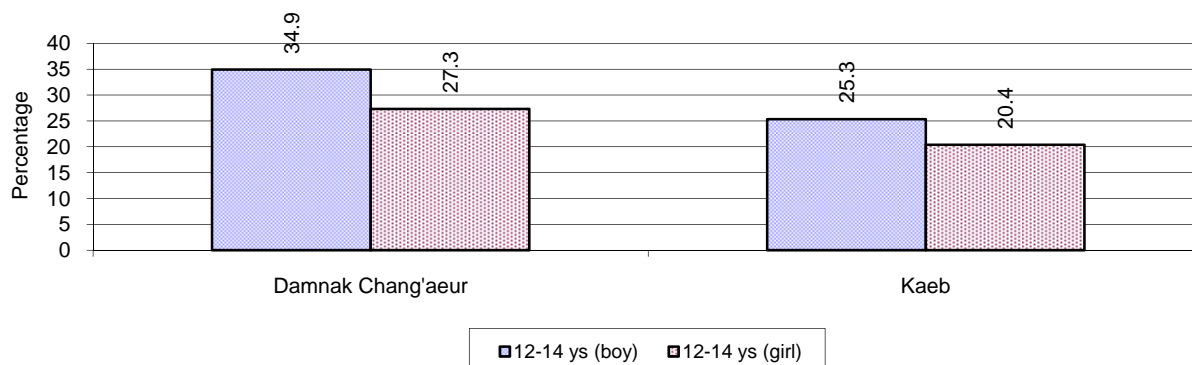


### 7.1.12 Enrolment at Lower Secondary Level, 2006-2008

Description	2006 %	2007 %	2008	
			%	Number
Total <b>children</b> aged 12-14 years old	8%	8%	8%	2,811 person(s)
Children aged 12-14 years old in school	82%	78%	72%	2,013 person(s)
Children aged 12-14 years old not in school	18%	22%	28%	798 person(s)
<b>Total girls</b> aged 12-14 years old				
Total <b>girls</b> aged 12-14 years old	8%	8%	8%	1,384 person(s)
Girls aged 12-14 years old in school	84%	79%	75%	1,036 person(s)
Girls aged 12-14 years old not in school	16%	21%	25%	348 person(s)
<b>Total boys</b> aged 12-14 years old				
Total <b>boys</b> aged 12-14 years old	9%	8%	8%	1,427 person(s)
Boys aged 12-14 years old in school	80%	76%	68%	977 person(s)
Boys aged 12-14 years old not in school	20%	24%	32%	450 person(s)

**Note:** Percentage is calculated on the basis of number of the total number of children within 12-14 yrs group, except for the first row of each section which is calculated on the basis of the total population.

### 7.1.13 Percentage of 12-14 year olds not in School, by District, in 2008



**Note:** Calculated as a percentage of the total 12-14 year old population in each district

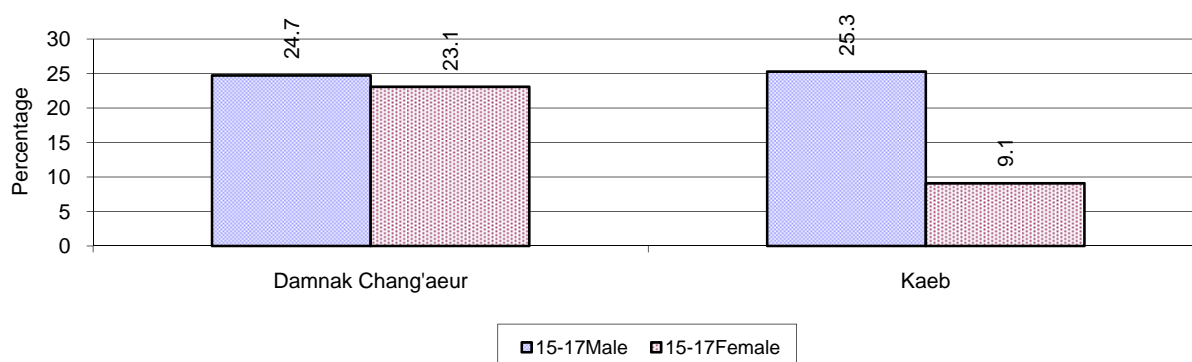
### 7.1.14 Upper Secondary Schools, 2006-2008

Description	2006	2007	2008
Number of upper secondary schools	1 school(s)	1 school(s)	1 school(s)
Number of upper secondary school rooms	8 room(s)	14 room(s)	31 room(s)
Number of upper secondary classes	15 class(es)	25 class(es)	31 class(es)
Number of upper secondary teachers	12 person(s)	16 person(s)	69 person(s)
Ratio of 15-17 yr olds to number of school	2,873	3,015	2,752
Ratio of 15-17 yr olds to number of school room	359	215	89
Ratio of 15-17 yr olds to number of classes	192	121	89
Ratio of 15-17 yr olds to number of teacher	239	188	40

### 7.1.15 Enrolment of 15-17 year old teenagers, 2006-2008

Description	2006	2007	2008
Number of teenage, 15-17 years old	2,873 person(s)	3,015 person(s)	2,752 person(s)
Number of teenage, 15-17 years old, who are not studying	490 person(s)	499 person(s)	594 person(s)
Percentage of teenage, 15-17 years old not studying	17%	17%	22%

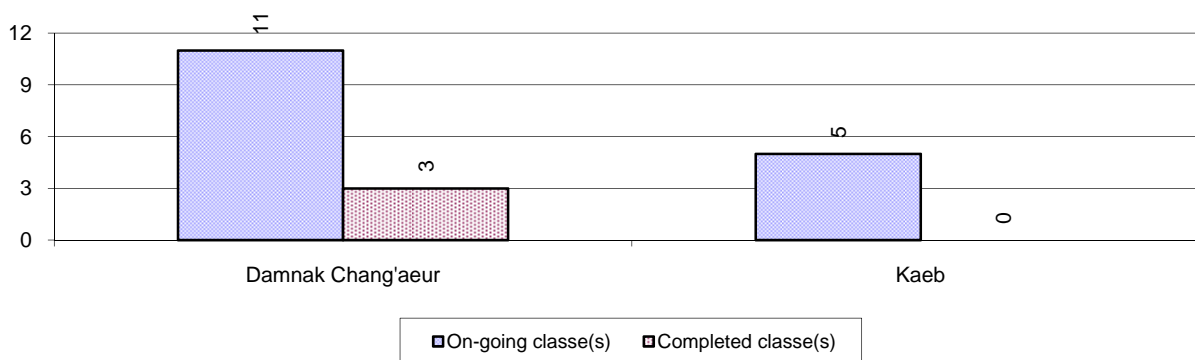
### 7.1.16 Percentage of 15-17 year old Teenagers not at School, by District, in 2008



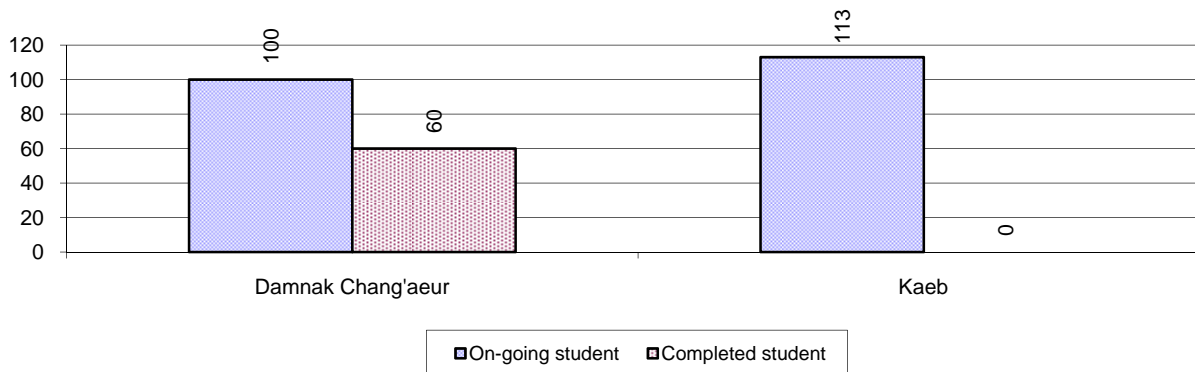
### 7.1.17 Literacy Classes as of 2008

Literacy classes	Organized by:		Other Program(s)	Total
	PDoEYS	NGOs		
Number of On-going literacy classes	16 class(es)	0 class(es)	0 class(es)	16 class(e(s)
Number of literacy students in on-going classes	213 person(s)	0 person(s)	0 person(s)	213 person(s)
Completed literacy class(es)	3 classes	0 classes	0 classes	3 classes
Number of literacy students that have completed literacy classes	60 person(s)	0 person(s)	0 person(s)	60 person(s)
Number of students that passed	54 person(s)	0 person(s)	0 person(s)	54 person(s)

### 7.1.18 Number of on-going and completed Literacy Classes, by District, in 2008



### 7.1.19 Students of on-going & completed Literacy Classes, by District, in 2008

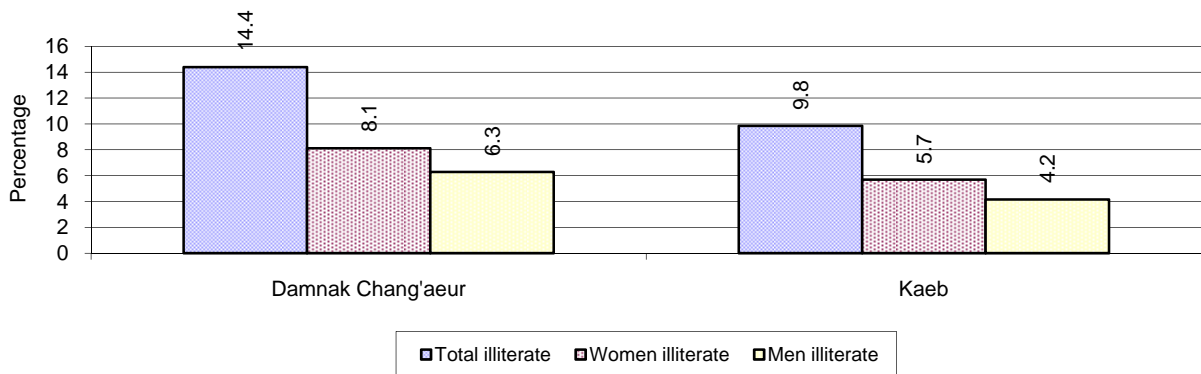


### 7.1.20 Percentage of illiterate People between 15-60, 2006-2008

Illiteracy Status	2006 %	2007 %	2008	
			%	Number
Illiterate people, 15-60 years old	13%	11%	13%	2,558 person(s)
Illiterate females, 15-60 years old	7%	6%	7%	1,451 person(s)
Illiterate people, 15-17 years old	5%	4%	5%	135 person(s)
Illiterate females, 15-17 years old	3%	2%	2%	56 person(s)
Illiterate people, 18-24 years old	10%	6%	11%	516 person(s)
Illiterate females, 18-24 years old	6%	4%	7%	321 person(s)
Illiterate people, 25-60 years old	17%	15%	15%	1,907 person(s)
Illiterate females, 25-60 years old	9%	8%	9%	1,074 person(s)

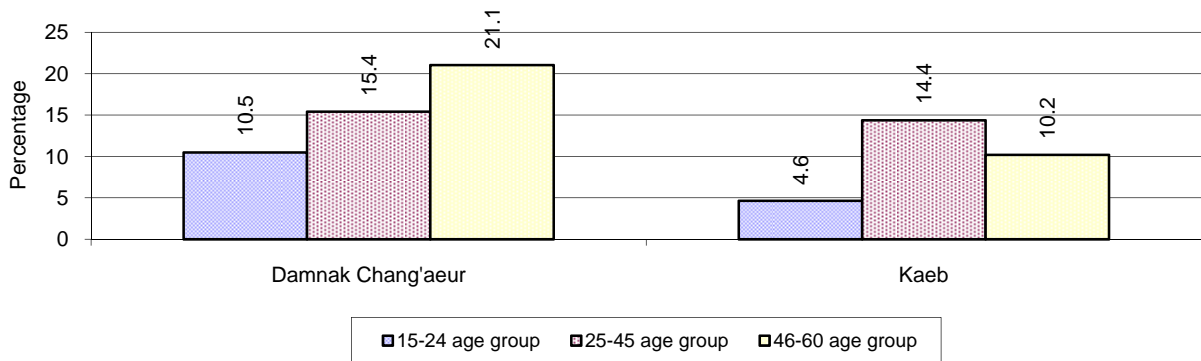
**Note:** Percentage is calculated on the basis of number of people in age each group.

### 7.1.21 Percentage illiterate People among 15-60 yrs old, by District, in 2008



**Note:** Percentages are calculated on the basis of number of people in that age group.

### 7.1.22 Percentage illiterate People for 15-24 yrs, 25-45 yrs and 46-60 yrs, by District, in 2008



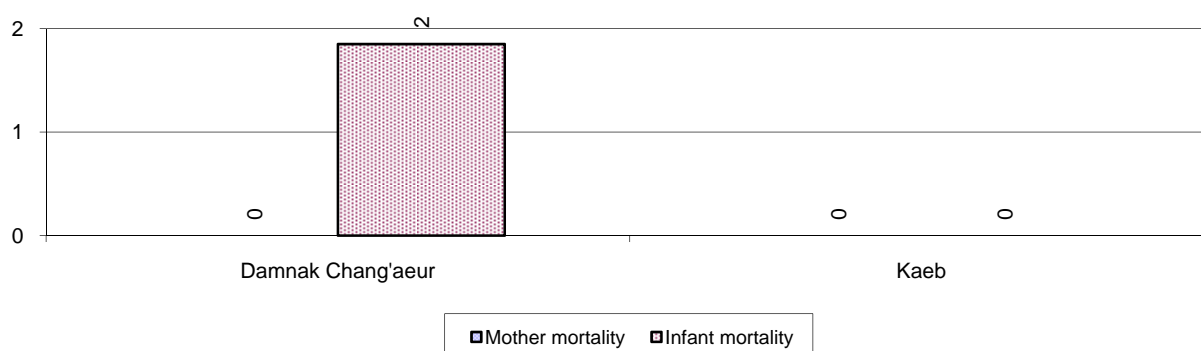
**Note:** Percentage of illiterate people in each age group is calculated on the basis of number of people in that age group.

## 7.2 Health

### 7.2.1 Health Situation of Women and Children, 2006-2008

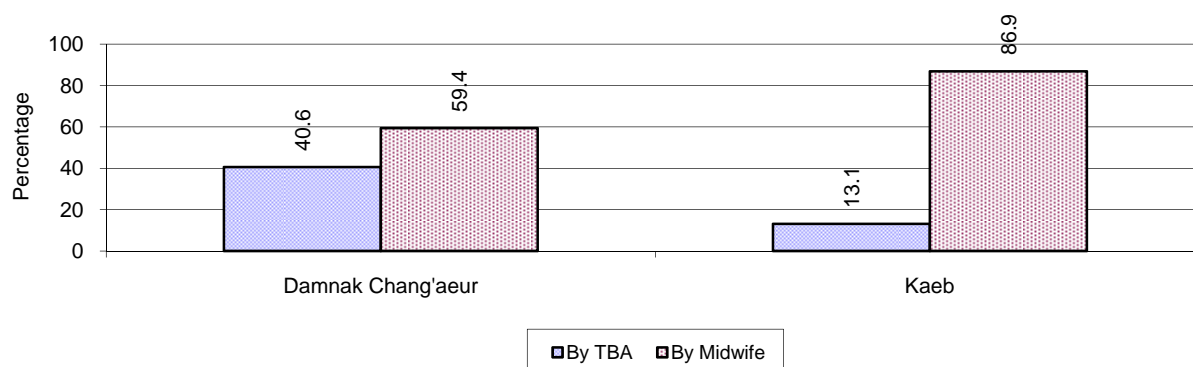
Description	2006	2007	2008
Number families with a birth during the year	558 families	506 families	452 families
Number of women who had their baby delivered by a Traditional Birth Attendant	303 person(s)	226 person(s)	150 person(s)
Percentage of women who had their baby delivered by a Traditional Birth Attendant	54 %	45 %	33 %
Number of women who had their baby delivered by a midwife	255 person(s)	280 person(s)	302 person(s)
Percentage of women had their baby delivered by a midwife	46 %	55 %	67 %
Number of mothers who died within 1 month of giving birth	1 person(s)	1 person(s)	0 person(s)
Mothers who died within 1 month of giving birth per 100,000 families having a delivery	179	198	0
Number of infants born during the year	558 person(s)	524 person(s)	468 person(s)
Number of Infants who died within 1 month	3 person(s)	7 person(s)	2 person(s)
Infants mortality within 1 month per 1,000 births	5	13	4
Number of children who died below the age of 5.	13 person(s)	9 person(s)	6 person(s)
Number of infants, aged 9-12 months, born during the year	250 person(s)	286 person(s)	193 person(s)
Nr. infants, aged 9-12 months, not receiving full immunization	23 person(s)	8 person(s)	7 person(s)
% of 9-12 months infants, not receiving full immunization	9 %	3 %	4 %

### 7.2.2 Mothers dying within 0 days to 1 month of giving Birth and Infants dying within 1 month in 2008, by District in 2008



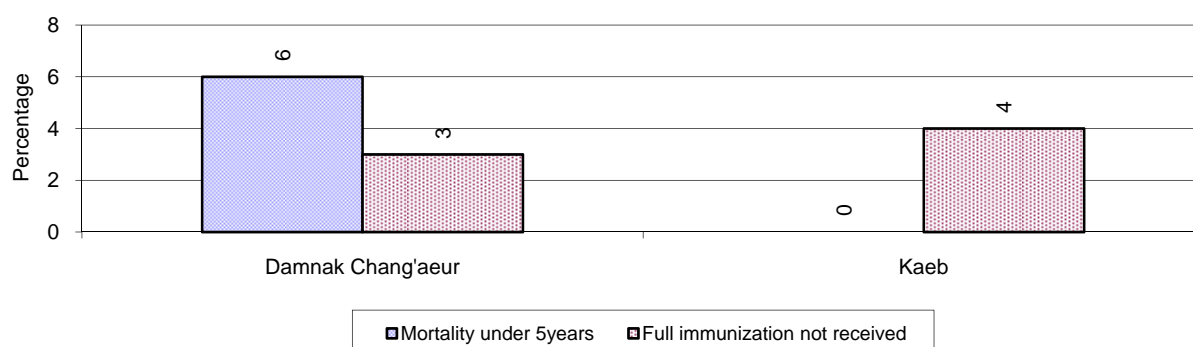


### 7.2.3 Percentage of Women delivering with a TBA or Midwife, by District in 2008



**Note:** Calculated as a percentage of total deliveries

### 7.2.4 Percentage of Children dying below 5 & of 9-12 months not receiving full Immunization, by District in 2008



**Note:** Mortality rate calculated as a percentage of the total 5 year old population. Lack of immunization received calculated as a percentage of the total number 9-12 months olds.

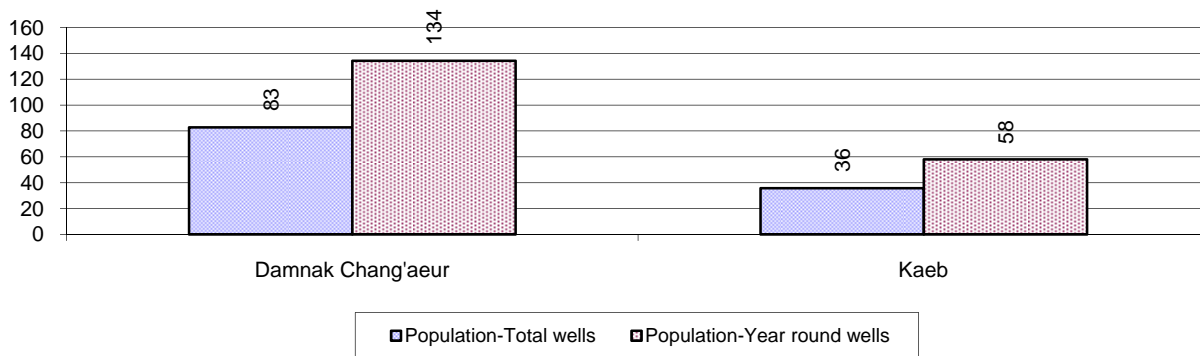
## 7.3 Water and Sanitation

### 7.3.1 Number of different types of Wells, 2006-2008

Type of wells	Number of wells by year		
	2006	2007	2008
<i>Total number of pumped or mixed wells</i>	270	289	358
Year-round usable pumped or mixed wells	151	168	180
Dry season unusable pump or mixed wells	119	121	178
Pump or mixed wells needing repair/rehabilitation	120	128	106
<i>Total number of ring wells</i>	248	282	278
Year-round usable ring wells	175	213	212
Dry season unusable ring wells	73	69	66
Ring wells needing repair/rehabilitation	67	62	49
<i>Total number of unprotected dug wells</i>	76	91	33
Year-round usable unprotected dug wells	35	45	18
Dry season unusable unprotected dug wells	41	46	15

Ring wells: dug wells with cement ring as lining

### 7.3.2 Ratio of People to Wells, by District in 2008

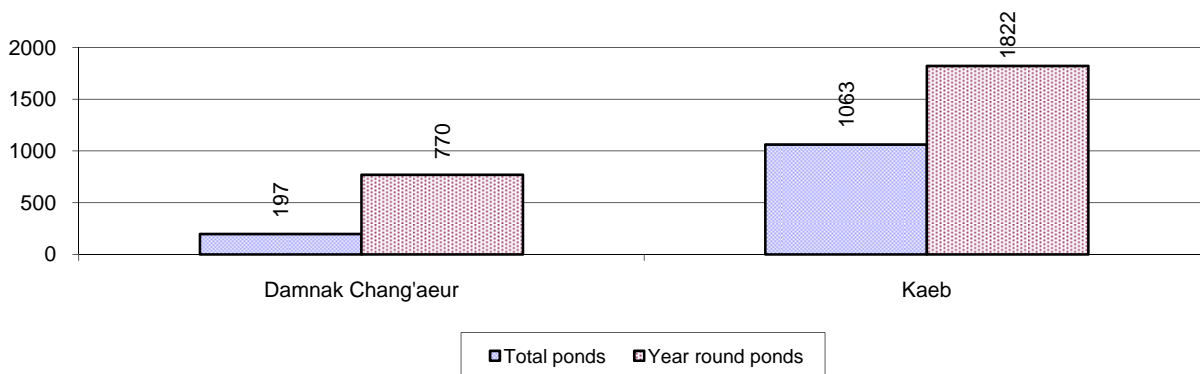


**Note:** Year-round wells excluding unprotected wells

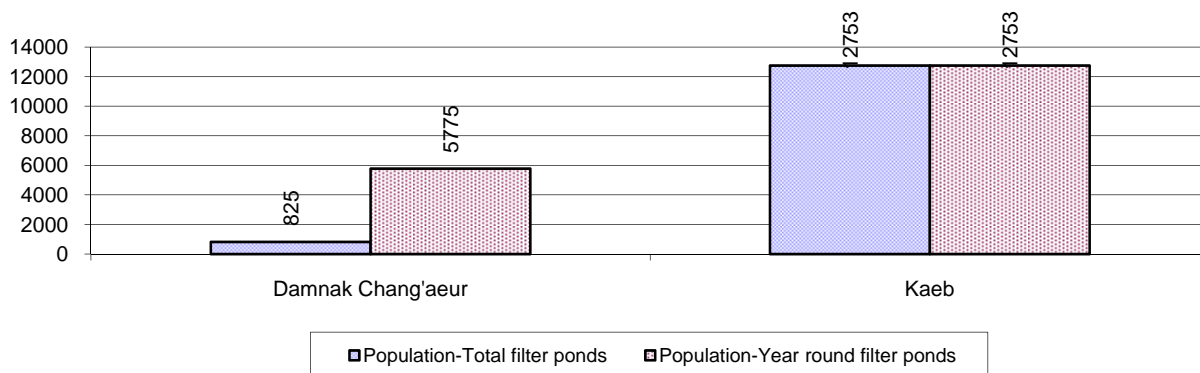
### 7.3.3 Potable Water Ponds, 2006-2008

Type of Pond	2006	2007	2008
<i>Total number of normal-type ponds</i>	103 pond	129 pond	129 pond
Year-round usable normal-type ponds	35 pond	31 pond	37 pond
Dry season unusable normal-type ponds	68 pond	98 pond	92 pond
Normal-type ponds needing repair/rehabilitation	47 pond	83 pond	55 pond
<i>Total number of filter ponds</i>	17 pond	37 pond	29 pond
Year-round usable filter ponds	6 pond	10 pond	5 pond
Filter ponds, dry season unusable	11 pond	27 pond	24 pond
Filter ponds needing repair/rehabilitate	11 pond	25 pond	5 pond

### 7.3.4 Ratio of People to normal Ponds, by District in 2008



### 7.3.5 Ratio of People to Filter Ponds, by District, in 2008

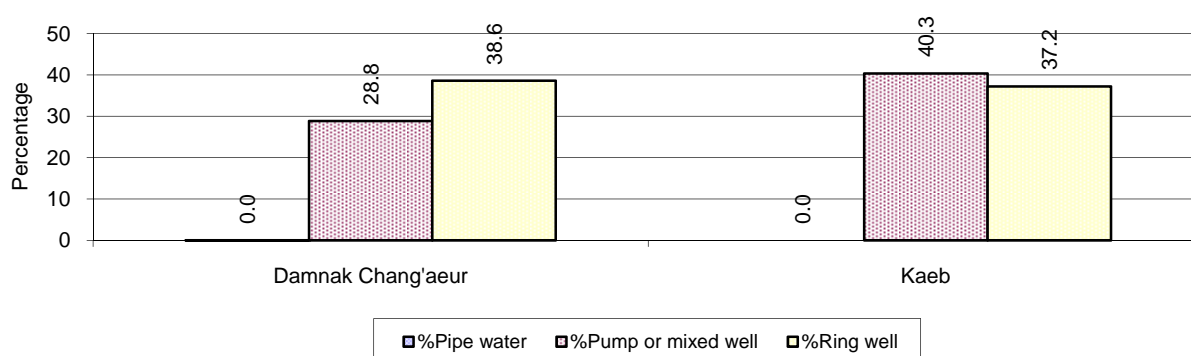


### 7.3.6 Source of potable Water for Households, 2006-2008

Water sources	2006	2007	2008	
	%	%	%	Number
Families using water from purification system	0%	0 %	0 %	1 families
Families using water from pump, mixed wells	29%	32 %	33 %	2,482 families
Families using water from ring wells and open dug wells	32%	39 %	38 %	2,863 families
Families using water from pond	30%	21 %	24 %	1,791 families
Families using water from rain water storage	1%	4 %	4 %	285 families
Families using water from rivers, lakes, natural ponds and reservoirs	7%	5 %	1 %	95 families

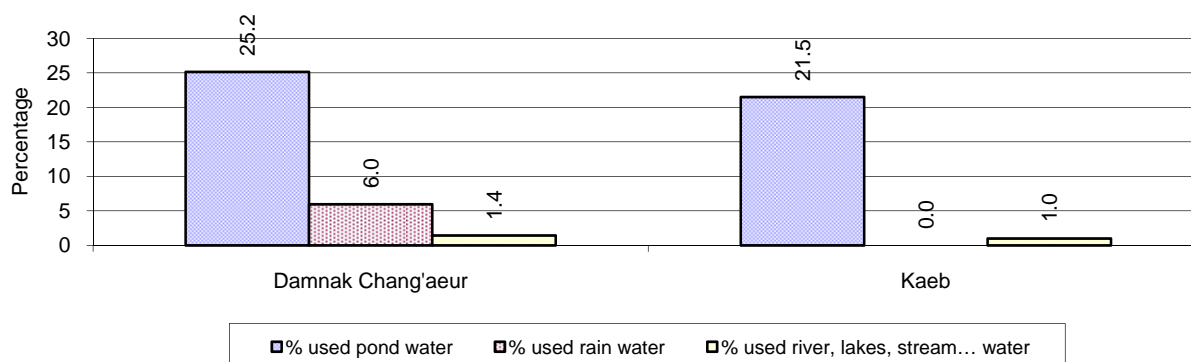
**Note:** Calculated as a percentage of the total number of families.

### 7.3.7 Percentage Families using different Water Sources, by District in 2008



**Note:** Calculated as a percentage of the total number of families in each district

### 7.3.8 Percentage Families using Water from Rain Water Storage, Ponds and natural Sources (rivers/lakes/natural ponds/reservoirs), by District 2008



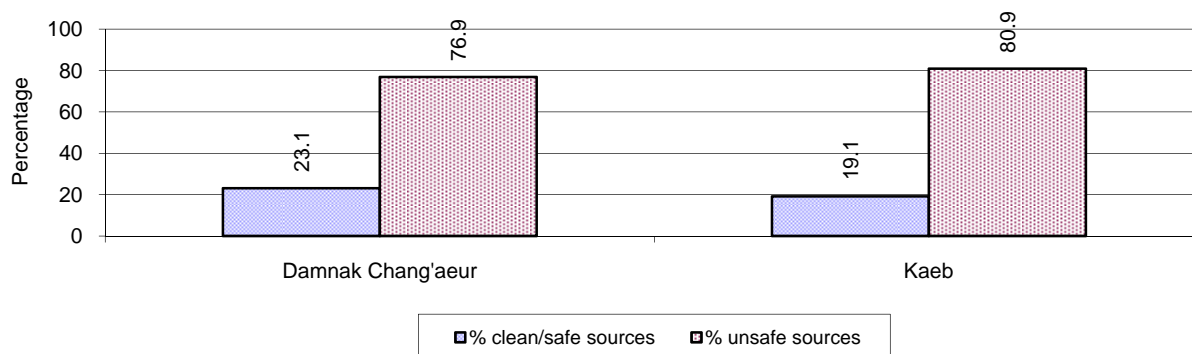
**Note:** Calculated as a percentage of the total number of families in each district

### 7.3.9 Drinking Water Sources in the dry Season, 2006-2008

Percentage Families that get drinking water from:	2006	2007	2008	
	%	%	%	Number
from clean/safe sources	5 %	18 %	22 %	1,629 families
from unsafe sources	95 %	82 %	78 %	5,888 families

**Note:** Calculated as a percentage of the total number of families.

### 7.3.10 Percentage Families using safe and unsafe Water Sources in the dry Season, by District in 2008



**Note:** Calculated as a percentage of the total number of families in each district.

### 7.3.11 Drinking Water Purification by Households, 2006-2008

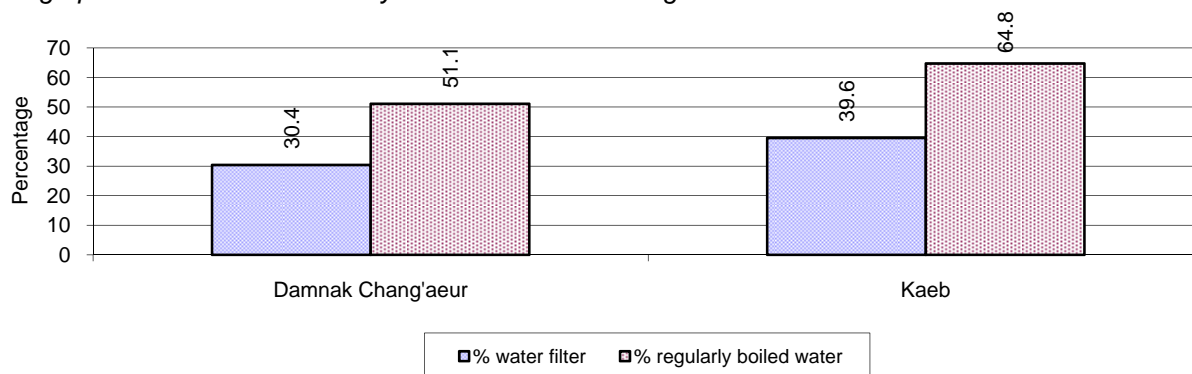
This table shows the different ways families make water safe for drinking.

Families, who:	2006	2007	2008	
	%	%	%	Number
Filter water for drinking	18%	18%	34 %	2,536 families
Boil water for drinking	61%	60%	56 %	4,214 families

**Note:** Calculated as a percentage of the total number of families

### 7.3.12 Percentage Families filtering Water or regularly boiling Water, by District in 2008

This graph shows the different ways families make drinking water safe.



**Note:** Calculated on as a percentage of the total number of families in each district.

### 7.3.13 Families' access to Water, 2006-2008

Families access to water	2006	2007	2008	
	%	%	%	Number
Families with water at home or in less than 150m	3%	3%	2 %	150 families
Families with water 150m or more away from home	10%	14%	16 %	1,187 families

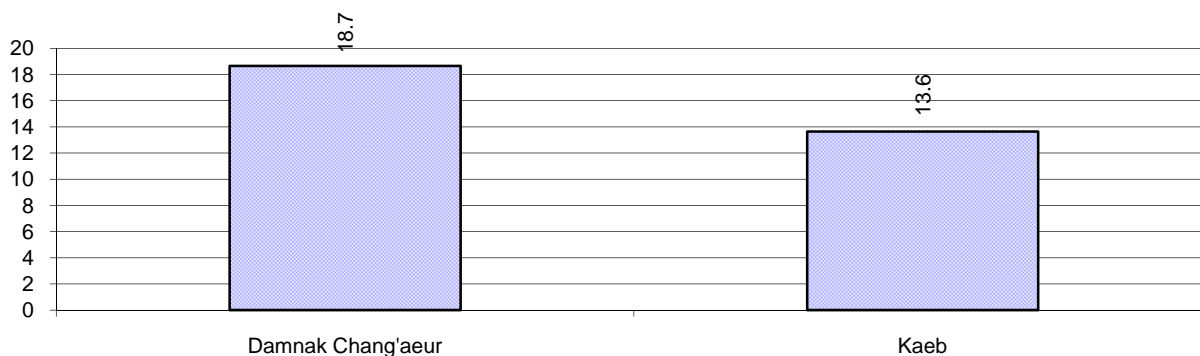
**Note:** Calculated as a percentage of the total number of families

### 7.3.14 Ratio of people to Latrines, 2006-2008

Description	2006	2007	2008	
	Ratio	Ratio	Ratio	Number
Ratio of people to latrines	21.1	20.0	16.5	2,173.0

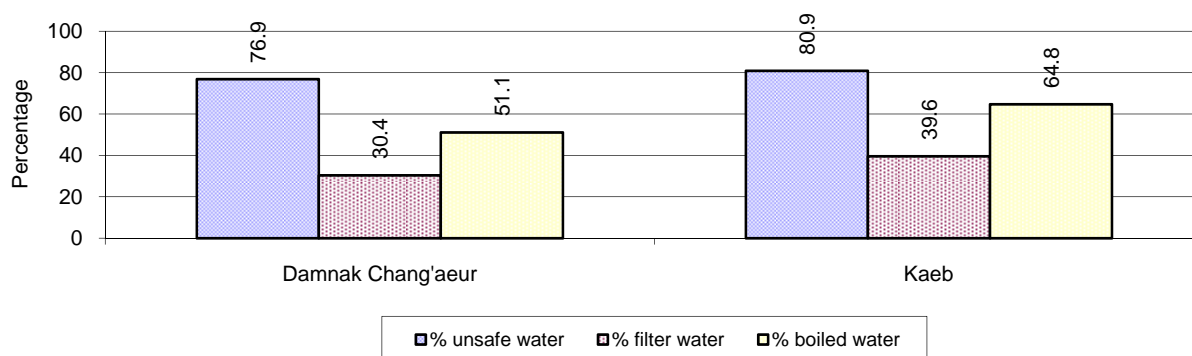
**Note:** Ratio calculated by dividing the total population by the total number of latrines

### 7.3.15 Ratio of People to Latrines, by District, in 2008



**Note:** Ratio calculated by dividing the number of houses with latrines by the total population in a district.

### 7.3.16 Percentage of Families drinking boiled, filtered or unsafe Water, by District, in 2008



**Note:** Calculated as a percentage of the total number of families in each district.

## 7.4 Vulnerable groups

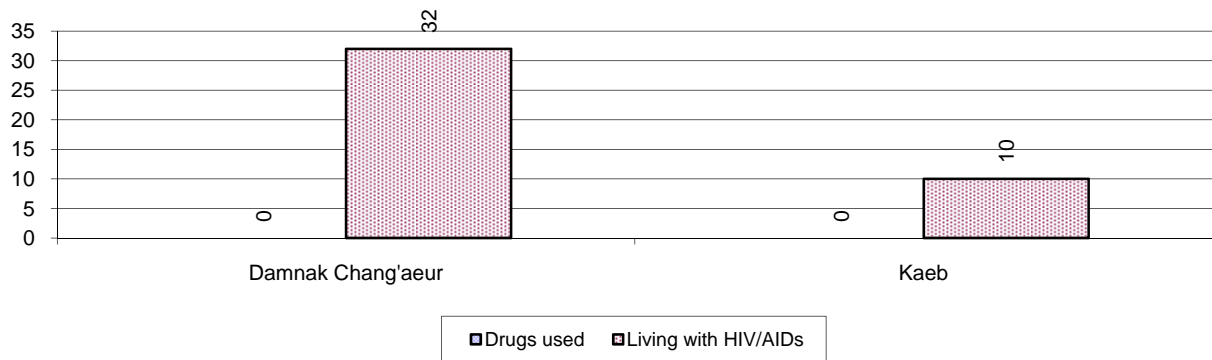
### 7.4.1 Vulnerable Groups in need of special Protection, 2006-2008

Vulnerable groups	2006	2007	2008
Victims of sexual abuse	0 person(s)	4 person(s)	0 person(s)
Victims of human trafficking	0 person(s)	0 person(s)	0 person(s)
Families with family member(s) using drugs	0 families	0 families	0 families
Families with family member(s) living with HIV/AIDS	52 families	31 families	42 families
Children under 18 yrs old whose parent died of AIDS	70 person(s)	59 person(s)	60 person(s)
Orphaned/abandoned children under 18 yrs old (all cases)	117 person(s)	106 person(s)	105 person(s)
Elderly persons without guardian	14 person(s)	18 person(s)	12 person(s)
Disabled people able to earn an income	139 person(s)	38 person(s)	65 person(s)
Disabled people unable to earn an income	29 person(s)	78 person(s)	35 person(s)
Disabled people under 18 yrs old	39 person(s)	31 person(s)	26 person(s)
Victims of natural disasters	177 families	39 families	104 families
Victims of land mines and unexploded weapons	2 person(s)	4 person(s)	11 person(s)

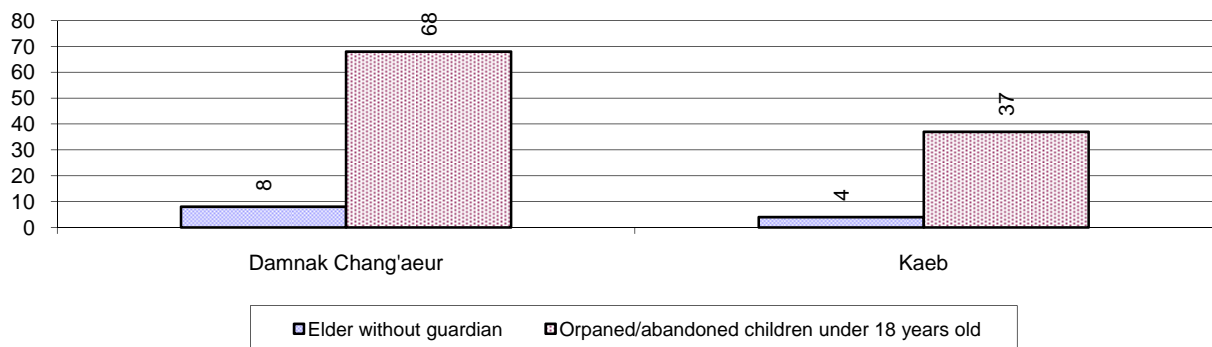
### 7.4.2 Registered Victims of sexual Abuse or Trafficking, by District, for 2008

There were no registered victims of sexual abuse or trafficking in this province in 2008

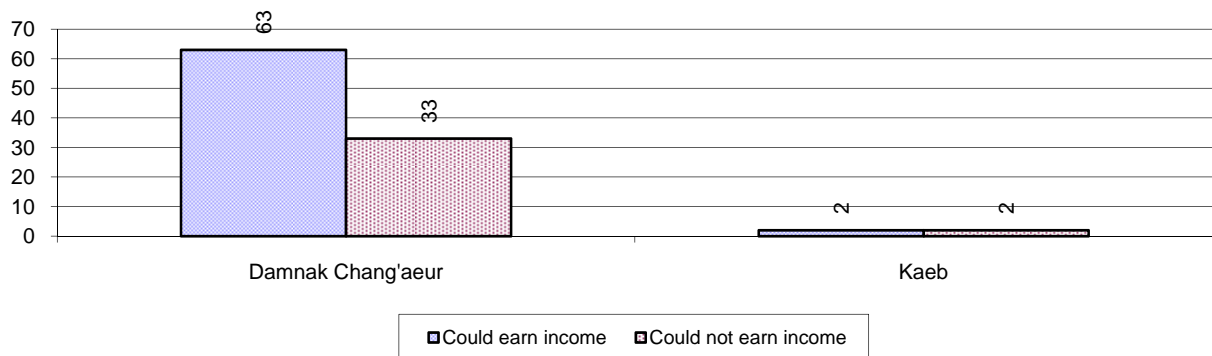
### 7.4.3 Registered Families with Member(s) using Drugs or living with HIV/AIDS, by District, for 2008



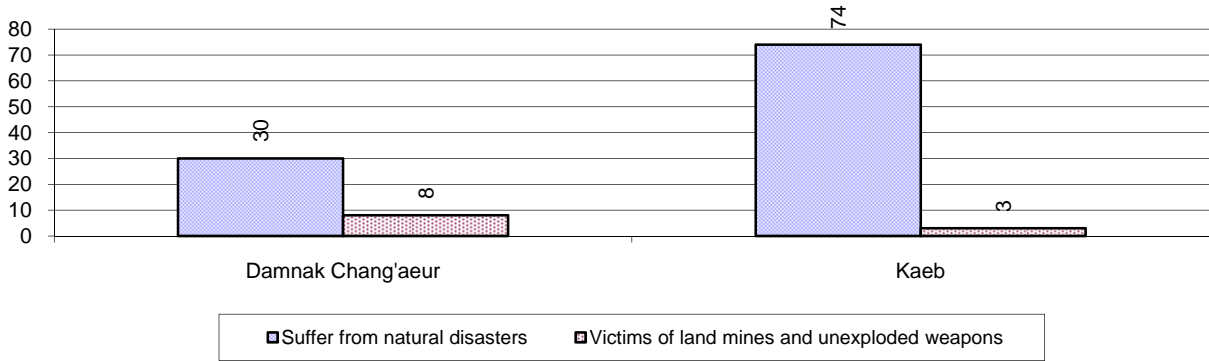
### 7.4.4 Elderly Persons without a Guardian and orphaned/abandoned Children under 18 years old, by District, for 2008



### 7.4.5 Number of disabled People who could or could not earn an Income, by District, for 2008



**7.4.6 Number of Families who suffered from natural Disasters, and number of Victims of Land Mines and unexploded Weapons, by District, in 2008**



## 7.5 Migration

### 7.5.1 Migration, 2006-2008

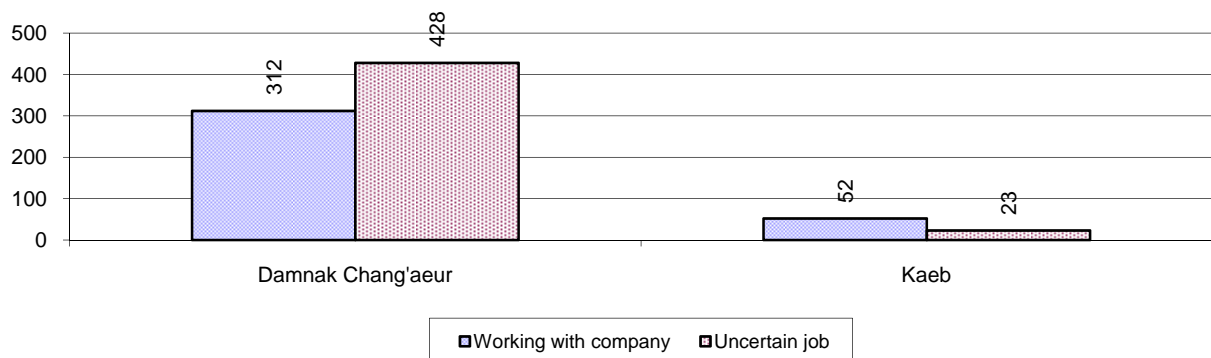
Description	2006	2007	2008
Number of families permanently in-migrated	18 families	22 families	46 families
Total number of people	70 person(s)	93 person(s)	179 person(s)
Total number of female	43 person(s)	35 person(s)	92 person(s)
Number of families permanently out-migrated	53 families	35 families	86 families
Total number of people	124 person(s)	116 person(s)	249 person(s)
Total number of female	72 person(s)	59 person(s)	104 person(s)
Number of families staying temporarily	26 families	31 families	28 families
Total number of people	82 person(s)	112 person(s)	101 person(s)
Total number of female	38 person(s)	61 person(s)	52 person(s)

### 7.5.2 Job Migration

Description	2006	2007	2008	
Number of people migrated to work with company/factory	2%	2%	2%	364 persons
Number of people migrated to work, but have uncertain jobs	2%	2%	3%	451 persons

**Note:** Calculated as a percentage of the total population of 18-60 year olds

### 7.5.3 Number of People working outside their home Villages in a Company/Factory or with an uncertain Job in 2008



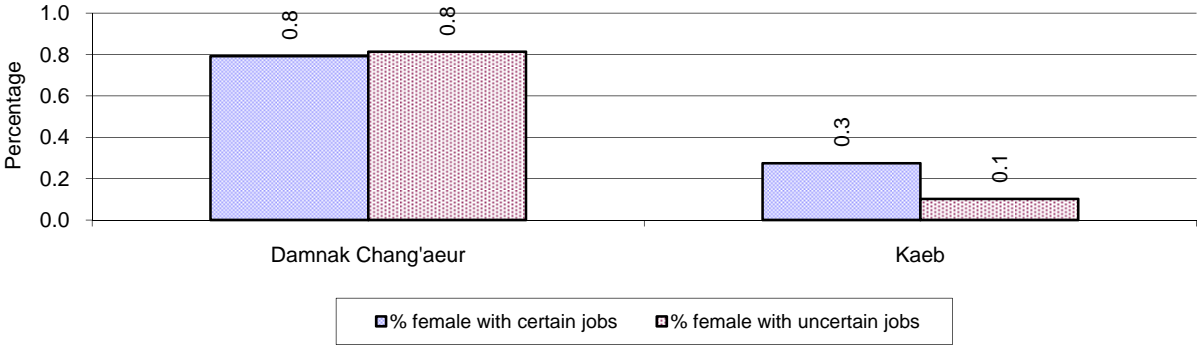
### 7.5.4 Female migration, 2006-2008

Description	2006 %	2007 %	2008	
			%	Number
Total number of migrants	1.6%	1.8%	2.3%	815 person(s)
Number of female migrants	0.9%	1.0%	1.2%	419 person(s)
Total number of migrants, who go to work with company/factory (with certain jobs)	0.8%	1.0%	1.0%	364 person(s)
Number of female migrants with certain jobs	0.5%	0.7%	0.6%	218 person(s)
Total number of migrants with uncertain jobs	0.8%	0.8%	1.3%	451 person(s)
Number of female migrants with uncertain jobs	0.4%	0.4%	0.6%	201 person(s)

**Note:** Calculated as a percentage of the total population



### 7.5.5 Percentage female Migrants with certain and uncertain Jobs, by District, in 2008



**Note:** Calculated as a percentage of the total population of the district

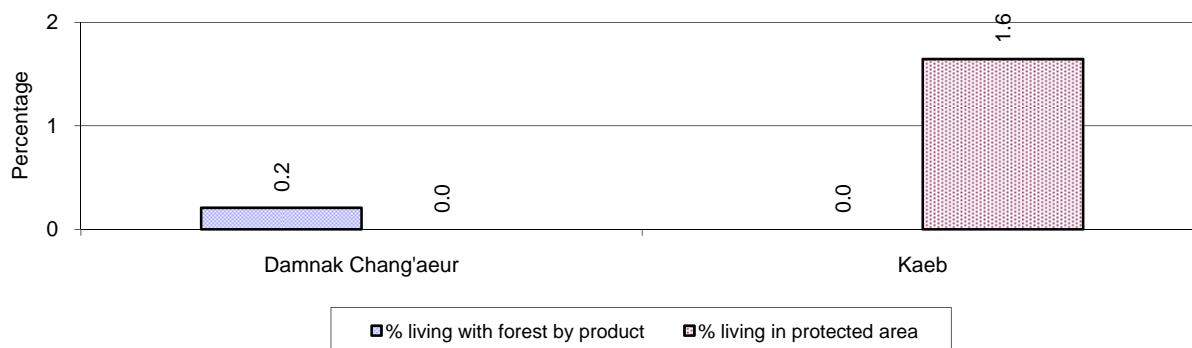
## 8 Natural Resources and Environment (NRE)

### 8.1 Families involved with NRE issues, 2006-2008

Description	2006 %	2007 %	2008	
			%	Number
Families living with forest by products	0 %	0 %	0 %	10 families
Families living in a protected area	1 %	1 %	1 %	45 families
Houses with access to garbage collection service	0 %	0 %	0 %	0 families
Families affected by environmental pollution	0 %	0 %	0 %	0 families
Families using chemical fertilizer	77 %	75 %	65 %	4,897 families
Families using chemical pesticide	22 %	16 %	26 %	1,991 families

**Note:** Calculated as a percentage of the total number of families

### 8.2 Percentage of Families involved with Natural Resource issues, by District, for 2008



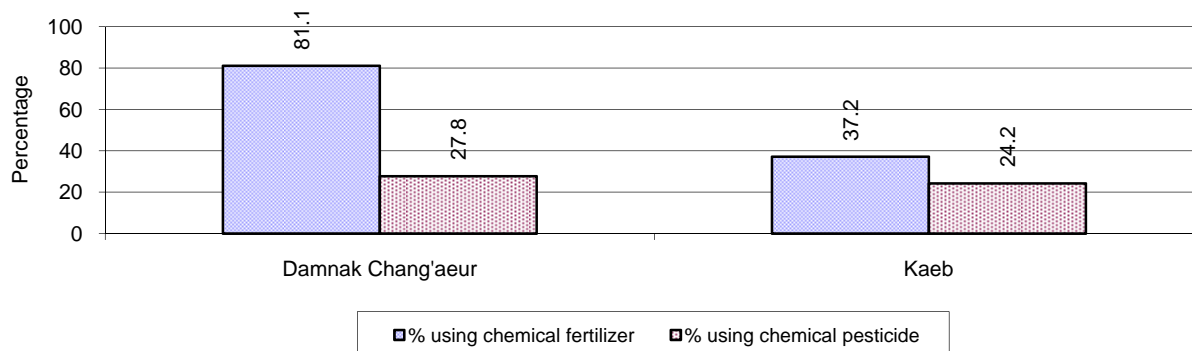
**Note:** Calculated as a percentage of the number of families in each district

### 8.3 Percentage Houses with access to Garbage collection and Families affected by environmental Pollution, by District, for 2008

There were no houses with access to garbage collection and families affected by environmental pollution in this province in 2008

**Note:** Garbage collection is calculated as a percentage of the total number of houses in each district and families affected by environmental pollution is calculated as a percentage of the total number of families in each district.

### 8.4 Percentage Families using chemical Fertilizer and chemical Pesticides, by District, for 2008



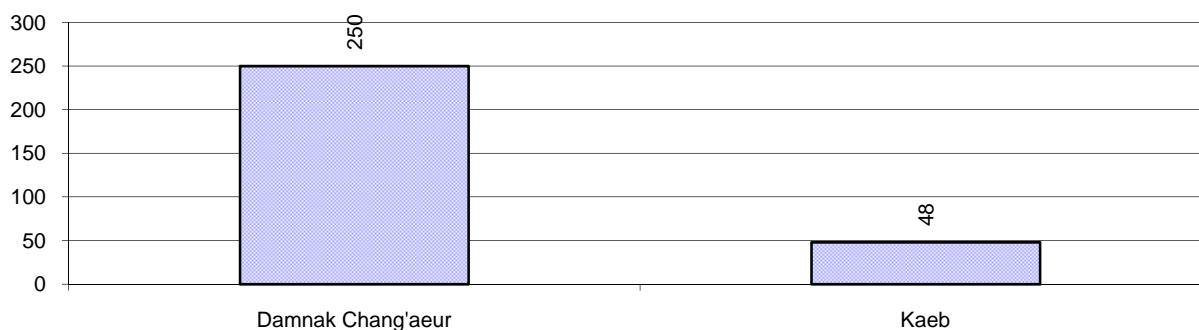
**Note:** Calculated as a percentage of the total number of families in each district

## 9 Administration and Security

### 9.1 Birth Registration, 2006-2009

Description	2006	2007	2008
Number of infants to be registered	555 person(s)	517 person(s)	466 person(s)
Number of unregistered infants the year	169 person(s)	273 person(s)	298 person(s)
Percentage of infants unregistered	30 %	53 %	64 %

### 9.2 Number of unregistered Infants born in 2008, by District

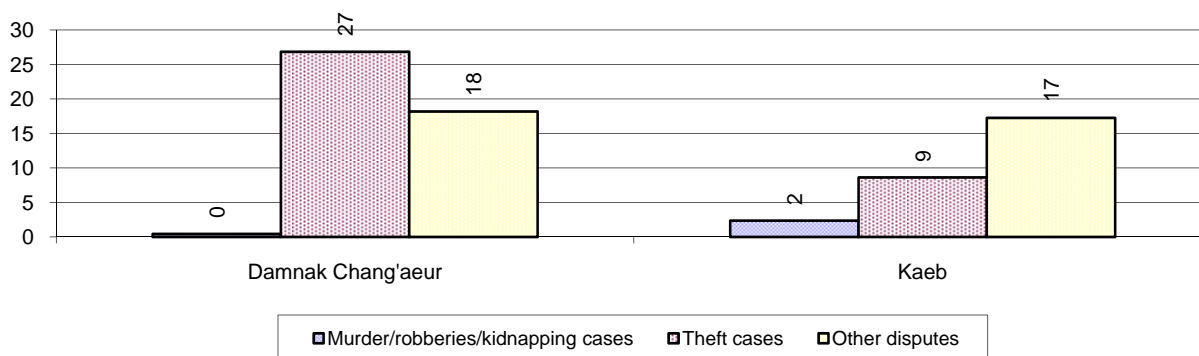


### 9.3 Registered criminal Cases, 2006-2008

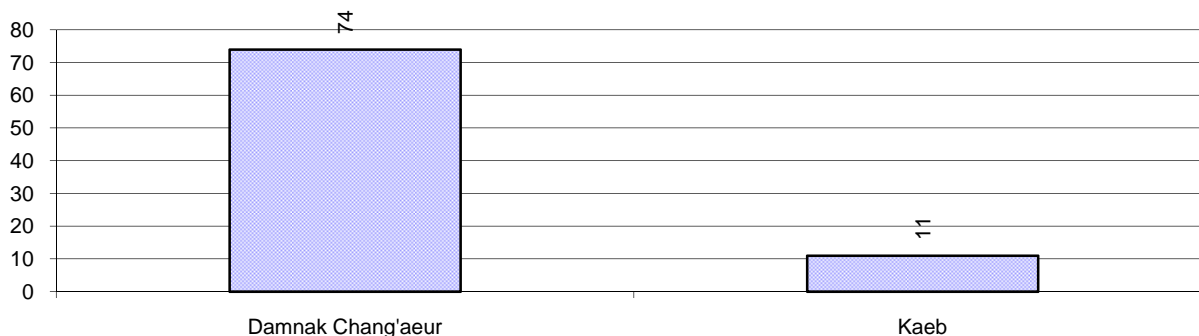
Description	2006	2007	2008
Murders, robberies and kidnapping cases	2 case(s)	1 case(s)	4 case(s)
Theft cases	130 case(s)	78 case(s)	73 case(s)
land dispute cases	114 case(s)	128 case(s)	85 case(s)
Other disputes cases	127 case(s)	68 case(s)	64 case(s)

*Note: this reflects only registered criminal cases*

### 9.4 Registered criminal Cases per 10,000 people, by District, for 2008



### 9.5 Number of registered Land Disputes, by District, in 2008

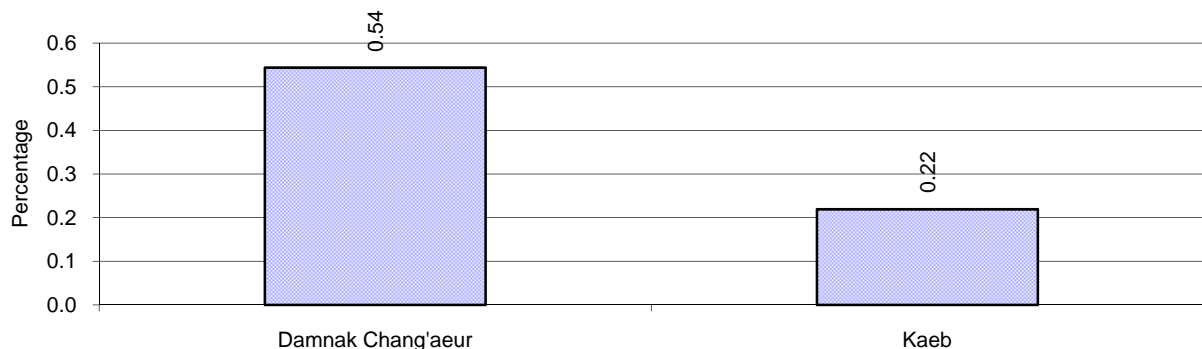


## 10 Gender

### 10.1 Reported Domestic Violence, 2006-2008

Description		2006	2007	2008
Families experiencing domestic violence		61 families	31 families	32 families(s)
% families experiencing domestic violence		1 %	0 %	0 %
Domestic violence cases reported by village chiefs		68 case(s)	14 case(s)	20 case(s)
Type	Physical violence	50 case(s)	7 case(s)	11 case(s)
	Sexual violence	1 case(s)	0 case(s)	0 case(s)
	Mental violence	9 case(s)	0 case(s)	5 case(s)
	Household economic violence	8 case(s)	7 case(s)	4 case(s)
Number of administrative decisions on domestic violence		29 case(s)	13 case(s)	20 case(s)
% of administrative decisions on domestic violence		43 %	93 %	100 %

### 10.2 Percentage of reported cases of Families experiencing domestic Violence, by District, in 2008



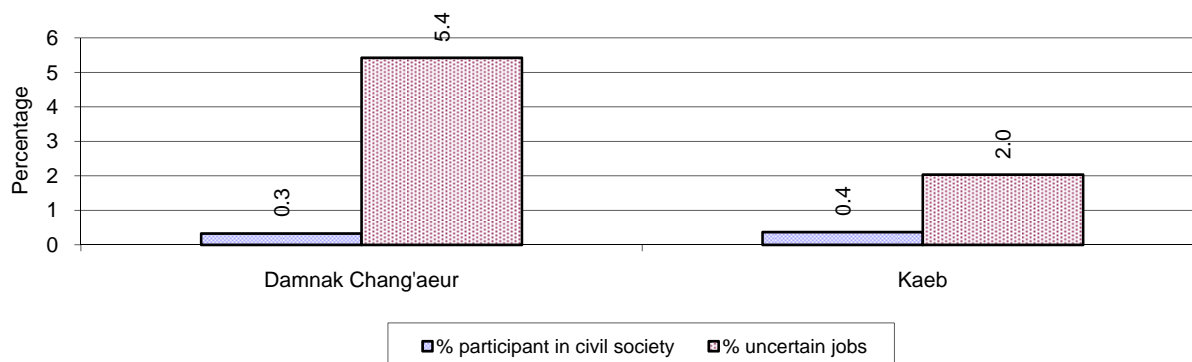
**Note:** Calculated as a percentage of the total number of families in each district

### 10.3 Women's involvement, 2006-2008

Description	2006 %	2007 %	2008	
			%	Number
People participating in civil society	1%	1%	1%	249 person(s)
Women participating in civil society	0%	0%	0%	123 person(s)
People, 18-60 yrs, with uncertain/irregular jobs	13%	11%	10%	1,787 person(s)
Women, 18-60 yrs, with uncertain/irregular jobs	7%	6%	4%	732 person(s)

**Note:** Participation can be in NGOs, CBOs, credit groups, women's unions, parties and other civil society organizations. The first section is calculated as a percentage of the total population. The second section is calculated as a percentage of the total 18-60 year old population.

### 10.4 Percentage of Female Participants in Civil Society and of 18-60 year women with uncertain Jobs, by District, in 2008



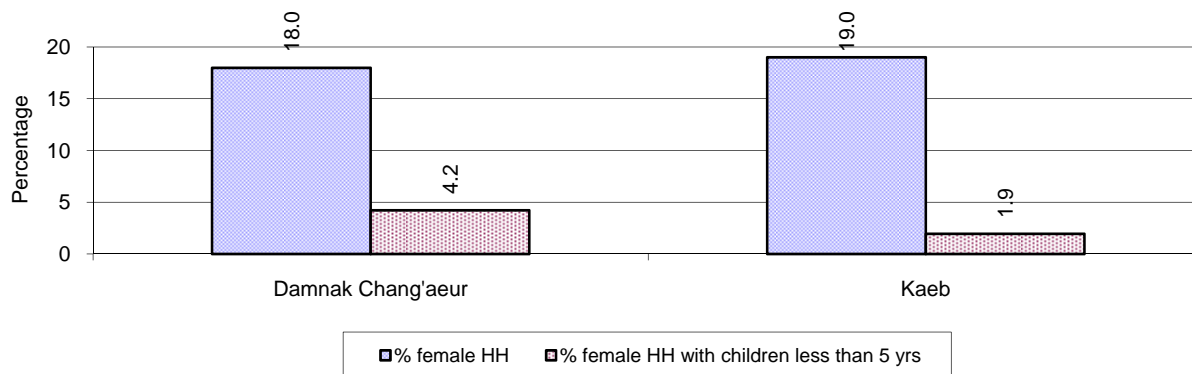
**Note:** Percentage of female participants in civil society is calculated as a percentage of the total population per district. The percentage of 18-60 years old women with uncertain jobs is calculated as a percentage of the total 18-60 year old population per district.

### 10.5 Female-headed Households, 2006-2008

Families with:	2006	2007	2008	
	%	%	%	Number
Households in which a woman is the family head	21%	21%	18%	1,380 families
Households in which a woman is the family head with children of less than 5 yrs	3%	4%	3%	255 families

**Note:** Calculated as a percentage of the total number of families

### 10.6 Percentage female-headed Households and with Children of less than 5 years old, by District in 2008



**Note:** Calculated as a percentage of the total number of families in each district  
 HH: Headed Household

## 11 Indigenous People in the District

### 11.1 Ethnic Minorities in the District, 2006-2008

Race of indigenous	2006		2007		2008	
	# families	# population	# families	# population	# families	# population
Phnong	0 families	0 person(s)	0 families	0 person(s)	0 families	0 person(s)
Kouy	0 families	0 person(s)	0 families	0 person(s)	0 families	0 person(s)
Stieng	0 families	0 person(s)	0 families	0 person(s)	0 families	0 person(s)
Mil	0 families	0 person(s)	0 families	0 person(s)	0 families	0 person(s)
Kroal	0 families	0 person(s)	0 families	0 person(s)	0 families	0 person(s)
Thmorn	0 families	0 person(s)	0 families	0 person(s)	0 families	0 person(s)
Khaonh	0 families	0 person(s)	0 families	0 person(s)	0 families	0 person(s)
Tompuonn	0 families	0 person(s)	0 families	0 person(s)	0 families	0 person(s)
Charay	0 families	0 person(s)	0 families	0 person(s)	0 families	0 person(s)
Kroeung	0 families	0 person(s)	0 families	0 person(s)	0 families	0 person(s)
Kavet	0 families	0 person(s)	0 families	0 person(s)	0 families	0 person(s)
Saouch	0 families	0 person(s)	0 families	0 person(s)	0 families	0 person(s)
Lun	0 families	0 person(s)	0 families	0 person(s)	0 families	0 person(s)
Kachak	0 families	0 person(s)	0 families	0 person(s)	0 families	0 person(s)
Praov	0 families	0 person(s)	0 families	0 person(s)	0 families	0 person(s)
Others	0 families	0 person(s)	0 families	0 person(s)	0 families	0 person(s)
<b>Total</b>	0 families	0 person(s)	0 families	0 person(s)	0 families	0 person(s)

**Note:** "Others" refer to other ethnic groups which are not listed.

### 11.2 Other Minorities in the District, 2006-2008

Minority	2006		2007		2008	
	# families	# population	# families	# population	# families	# population
Khmer Islamic	115 families	472 person(s)	205 families	836 person(s)	208 families	839 person(s)
Vietnamese	0 families	0 person(s)	2 families	3 person(s)	0 families	0 person(s)
Laos	0 families	0 person(s)	0 families	0 person(s)	0 families	0 person(s)

**Note:** Number of indigenous and minority population are additional data, so some village may not recorded.

# **SECTION C: PLANS AND PROJECTS**





## 12 Priorities and Plans

### 12.1 Priorities of the Districts in the Province for 2009 by Sector

Below data summarized by sub-sector from the District Priority Activity Matrix (DPAM) taken from the CDPD. The DPAM is used for the District Integration Workshop (DIW), to show what kind of projects the Communes have proposed in their Commune Investment Plan (CIP) for 2009. Donors, departments and other agencies then considers which projects they want to support and which projects they are not interested in. This results in Temporary Agreements between the Commune Council and the Supporter (NGO, Department, private donor, etc).

Sub Sector	Type of Activities	District				Total	
		Damnak Chang'aeur		Kaeb		Act	Com
		Act	Com	Act	Com		
<b>Economic</b>							
Agriculture	Crop cultivation training	15	3	11	2	26	5
	Livestock health	6	2	2	2	8	4
	Livestock training	1	1	2	2	3	3
	Farmer community support	1	1	1	1	2	2
	Agriculture inputs	7	3	10	2	17	5
	Fisheries	0	0	2	2	2	2
Roads	Road committee	1	1	0	0	1	1
	Road infrastructure construction	4	2	1	1	5	3
	Road infrastructure rehabilitation	4	2	2	2	6	4
Irrigations	Irrigation management	2	2	0	0	2	2
	Irrigation infrastructure construction	7	3	6	2	13	5
	Irrigation infrastructure rehabilitation	7	3	2	2	9	5
Credit	Cash credit	1	1	2	2	3	3
Rural economy	Others	0	0	1	1	1	1
<b>Social</b>							
Health	Reproductive health	2	2	3	2	5	4
	HIV/AIDS	0	0	2	2	2	2
	Health campaign	5	3	4	2	9	5
	Immunization	2	2	2	2	4	4
	Health capacity building	1	1	1	1	2	2
	TBA support/training	4	2	1	1	5	3
	Tuberculosis control	1	1	1	1	2	2
	Malaria control	5	3	2	2	7	5
	Dengue fever control	5	3	2	1	7	4
	Health equity fund	3	2	0	0	3	2
	Child health care	1	1	0	0	1	1

Sub Sector	Type of Activities	District				Total	
		Damnak Chang'aeur		Kaeb		Act	Com
		Act	Com	Act	Com		
	Domestic sanitation	3	3	2	2	5	5
	Water supply	2	2	1	1	3	3
	Drinking wells/pond construction	4	3	4	2	8	5
	Drinking wells/pond rehabilitation	3	2	1	1	4	3
Education	Literacy	1	1	2	1	3	2
	School building	4	2	1	1	5	3
	Kindergarten and child care	4	3	1	1	5	4
	School enrollment	2	2	1	1	3	3
	School dropout reduction	4	2	4	2	8	4
	Vocational training	1	1	3	2	4	3
<b>NREM</b>							
NREM education	NREM training	9	2	8	2	17	4
	NREM campaign	2	1	3	2	5	3
Natural resource protection	Tree planting	1	1	3	2	4	3
	Fisheries protection	5	3	5	2	10	5
	Forestry protection	1	1	3	1	4	2
	Wildlife/temple protection	0	0	1	1	1	1
Environmental management	Waste/pollution control	4	1	6	2	10	3
<b>Administration and Security</b>							
CS Administration	CS capacity building	2	1	2	2	4	3
	CS furniture/supplies	0	0	1	1	1	1
	Land used planning	6	3	4	2	10	5
Local Security	Local security	7	3	11	2	18	5
Local Society	Information dissemination	1	1	2	1	3	2
	Community organization	4	3	0	0	4	3
<b>Gender</b>							
Gender policy support	Gender mainstreaming	1	1	4	2	5	3
	Gender capacity building	2	2	3	1	5	3
	Women and children rights	0	0	1	1	1	1
	Skill training for women	5	3	6	2	11	5
Gender legal protection	Domestic violence prevention	3	3	2	2	5	5
	Anti-trafficking	3	2	3	2	6	4
	Child protection	2	1	2	2	4	3

**Act.:** number of activities proposed relating to a sub-sector. **Com.:** number of communes that proposed activities relating to a sub-sector.

**12.2 Total Expenditure on C/S Fund Projects by sector and district between 2005 and 2008**

Sector	Total Cost in Million Riels	
	Damnak Chang'aeur	Kaeb
Irrigation	35.63	
Rural Domestic Water Supplies	28.35	11.56
Rural Transport	279.58	202.95

**Source:** PID

### 13 District level Projects from 2006 to 2009

District Initiative Projects are funded by Danida and DFID through the PSDD (UNDP, DFID and SIDA).

#### **Funding for 2006-2008**

Between 2006 and 2008 there were 14 provinces funded by PSDD and 10 by Danida and DFID. The list of provinces and who funded them is below

#### *Danida and DFID funded DIPs:*

Kampong Cham	Kampong Speu	Koh Kong	Kratie	Monduliri
Pursat	Ratanakiri	Siem Reap	Sihanoukville	Kep

#### *PSDD funded DIPs:*

Banteay Meanchey	Battambang	Kampong Chhnang	Kandal	Phnom Penh
Prey Veng	Svay Rieng	Takeo	Kampong Thom	Preah Vihear
Stung Treng	Kampot	Oddar Meanchey	Pailin	

#### **Funding for 2009**

In 2009 there was a change to the number of provinces funded by the two streams. Danida and DFID were still funding the same 10 provinces they had been funding the three years previous, but two more provinces were added *Kampong Thom and Kampot*. Now PSDD funded 12 provinces and Danida and DFID funded 12.

### 13.1 District Initiative Infrastructure Projects from 2006 to 2009

#### 13.1.1 District Initiative Infrastructure Projects for 2006 to 2008

District	Date	Project Name	Implementing Agencies	Budget (US\$)	Project Output & Capacity	Number of Beneficiaries
Damnak Chang'aur	2006	Canal rehabilitation	Water resource department	6,824.00		
Damnak Chang'aur	2006	Dam repair	Water resource department	3,448.00		
Damnak Chang'aur	2006	Water gates	Water resource department	1,326.00		
Damnak Chang'aur	2007	Rehabilitae canal 7317m	DWRM	12,695.00		
Damnak Chang'aur	2007	Rehabilitae Tanes dam, 308m	DWRM	4,346.00		
Damnak Chang'aur	2007	Construct water gates of canal	DWRM	3,202.00		
Damnak Chang'aur	2008	Dam rehabilitation of Rones	Inter-commune	6,225.76	800m	
Damnak Chang'aur	2008	Water gate construction	Inter-commune	6,126.93	3 place	
Damnak Chang'aur	2008	Canal reparation	Inter-commune	5,996.20	1150m	
Kep	2007	Rehabilitate canal 280 m	DWRM	1,200.00		
Kep	2007	Rehabilitate dam with capacity 24 hectares	DWRM	1,357.00		
Kep	2007	Build water gates of canal 6 places	DWRM	7,078.00		
Kep	2007	Dam Rehabilitae, 1200m, Oukrasar	DWRM	13,179.00		
Kep	2008	Water gate construction	DWRM	3,138.90	3 place	4078
Kep	2008	Canal reparation	DWRM	6,997.00	1000m	4259
Kep	2008	Dam restoration	Inter-commune	4,305.40	540m	2191
Kep	2008	Pond digging	PDRD	3,498.72	1 place	669

### 13.1.2 District Initiative Infrastructure Projects in 2009

District	Project Name	Sector	Implementing Agency	Budget	Project outputs/ capacities	No. of Beneficiaries		Progress	Remarks on Issues of Progress
						Total	Female		
Damnak Chang Oeur	3 Water gate (Ou Doung, Ampeng)	WRM	PMC	\$10,000.00	3 site	4,760	2,524	0%	Preparing bidding
Damnak Chang Oeur	Water pipe gate (Koah Som)	WRM	PMC	\$1,500.00	1 site	420	215	0%	Preparing bidding
Damnak Chang Oeur	Repair water gate (Koah Som)	WRM	PMC	\$2,000.00	1 site	420	215	0%	Preparing bidding
Damnak Chang Oeur	Repair Rones dam 600m	WRM	PMC	\$5,700.00	600m	4,760	2,524	0%	Preparing bidding
Kep	Unload Keo Krasang canal 2000m	WRM	PDWRM	\$13,000.00	2000m	1,250	750	0%	Preparing bidding
Kep	2 Water gate (Keo Krasang)	WRM	PDWRM	\$7,000.00	2 sites	1,250	750	0%	Preparing bidding

### 13.2 District Initiative Service Projects from 2006 to 2009

#### 13.2.1 District Initiative Service Projects for 2006 to 2008

District	Date	Project Names	Implementing agencies	Budget (US\$)	Project Output & Capacity	Number of Beneficiaries
Damnak Chang Eur	2006	NREM education for villagers	Environment department	762.00		
Damnak Chang Eur	2006	Tree planting along canal	Environment department	3,035.00		
Damnak Chang Eur	2006	Formation of NREM working group	Environment department	60.00		
Damnak Chang Eur	2006	Monthly monitoring by working group	Environment department	1,460.00		
Damnak Chang Eur	2006	Monthly meeting of working group	Environment department	240.00		
Damnak Chang Eur	2007	Establish bio-diversity protection community of Rones dam	CBOs and Khan	2,446.00		
Damnak Chang Eur	2007	Produce rubbish bins for public places	Khan	860.00		
Damnak Chang Eur	2007	Establish working group to prevent from illegal NR activities	Khan Working Group	1,755.00		
Damnak Chang Eur	2007	Establish working group to maintain trees along canals	Local Community	660.00		
Damnak Chang Eur	2007	Dissemination on roles and resp of Khan	Khan Land Office	1,029.00		

District	Date	Project Names	Implementing agencies	Budget (US\$)	Project Output & Capacity	Number of Beneficiaries
		Cadastral Committee				
Damnak Chang Eur	2008	Annual workshop	Salakhan	163.00	1 workshop	9752
Damnak Chang Eur	2008	Posters on NRM and environment protection	Dept of Environment	811.00	2 posters	6890
Damnak Chang Eur	2008	Demarcation of mangrove forest boundary	Dept of Environment	2,022.00	50 concrete	7921
Damnak Chang Eur	2008	Tree plantation	Sangkat Forestry Admin	1,822.00	1000 trees	5231
Damnak Chang Eur	2008	Establishment of community for bio-diversity protection	DWRM	326.00	4 times	9752
Damnak Chang Eur	2008	Prevention and crack down illegal NRM activities	Salakhan	1,005.00	4 times	9179
Damnak Chang Eur	2008	Identification of mangrove forest protection	Dept of Environment	1,164.00	12 times	6420
Kep	2007	Establish working group to prevent from illegal NR activities	Khan Office	9,765.00		
Kep	2007	Training on gender mainstreaming in NRM	Khan WA	517.00		
Kep	2007	Training on NREM concept and importance of mangrove forest	DENV	518.00		
Kep	2008	Annual workshop	Salakhan	143.00	1 workshop	800
Kep	2008	Posters on NRM and environment protection	Dept of Environment	1,600.00	4 posters	1700
Kep	2008	Tree plantation	Khan AGRI	2,300.00	500 tree	800
Kep	2008	Dissemination of NRM and environment	DWRM	2,570.00	small fish 800kg	3000
Kep	2008	Workshop on environment and sanitation of sea side	Dept of Environment	201.50	1 workshop	800
Kep	2008	Identification of mangrove forest protection	Inter-commune	525.00	6 times	500

### 13.2.2 District Initiative Service Projects in 2009

District	Project Name	Sector	Implementing Agency	Budget	Project outputs/ capacities	No. of Beneficiaries		Progress	Remarks on Issues of Progress
						Total	Female		
Damnak Chang Oeur	Support community farmer water user group	WRM	PDWRM	\$2,600.00	2 Community	8,465	4,390	0%	
Damnak Chang Oeur	Veal Vong dam fishery day	AGR	Fisheries Admin	\$3,200.00	1 time	8,465	4,390	0%	
Damnak Chang Oeur	Setup Ou Krasa community fishery	AGR	Fisheries Admin	\$2,000.00	1 Community	3,570	1,980	0%	
Kep	Support Phum Thmei community fishery	AGR	Fisheries Admin	\$5,500.00	1 Community	3,950	2,500	20%	
Kep	Environmental sanitation extension	NRM	PDoE	\$1,500.00	1 time	8,500	4,250	30%	

### 13.3 Inter Commune Council Projects in 2008 and 2009

#### 13.3.1 ICC Projects in 2008

*There are no ICC projects in this Province at this time*

#### 13.3.2 ICC Projects in 2009

*There are no ICC projects in this Province at this time*

**Source:** ICC project, Ministry of Interior (DoLA), -UNDP project for Local Governance – DDLG



## 13.4 Provincial Investment Fund (PIF) and District Investment Fund (DIF)

The PIF and DIF receive funding from a range of donors – PSSD, DANIDA, UNICEF, IFAD and CANADA. However in this section we only include the PIF and DIF projects funded by PSSD and DANIDA through NRML.

### 13.4.1 PIF and DIF 2008

NCDD Standard Outputs			Budget
Output Description	Unit	Quantity	
<b>Unit Title: Support to Contract Admin Unit</b>		<b>Unit Number: 23/CAU/08-01</b>	
CAU staff support costs	Month	12	\$ 8,520.00
Program administrative support	Month	12	\$ 13,348.94
Program support staff	Month	12	\$ 3,360.00
Publicity	Month	400	\$ 1,848.00
Program meetings and workshops	Month	12	\$ 682.00
Training and capacity building by/for CAU	Person-Day	(5F+30M) X 5D	\$ 1,091.50
Contingencies			\$ 438.00
<b>Sub-total of unit</b>			<b>\$ 29,288.44</b>
<b>Unit Title: Support to Finance Unit</b>		<b>Unit Number: 23/FIN/08-01</b>	
Support to ExCom Finance staff	Month	12	\$ 4,284.00
Support to Provincial Treasury staff	Month	12	\$ 1,268.00
Training and capacity building by/for Finance staff	Person-Day	(1F+2M) X 5D	\$ 0.00
Contingencies			\$ 0.00
<b>Sub-total of unit</b>			<b>\$ 5,552.00</b>
<b>Unit Title: Support to Technical Support Unit</b>		<b>Unit Number: 23/TSU/08-01</b>	
Support to ExCom TSU	Month	12	\$ 4,644.00
Training and Capacity Building by ExCom TSU	Person-Day	(10F+30M) X 2D	\$ 231.00
Training and Capacity Building for ExCom TSU	Person-Day	(0F+3M) X 7D	\$ 465.00
Contingencies			\$ 0.00
<b>Sub-total of unit</b>			<b>\$ 5,340.00</b>
<b>Unit Title: Support to Project to Support Democratic Development through Decentralization and Deconcentration</b>		<b>Unit Number: 23/PSD/08-01</b>	
PSSD staff support costs	Month	12	\$ 10,620.00
PSSD support staff	Month	12	\$ 5,200.00
Contingencies			\$ 0.00
<b>Sub-total of unit</b>			<b>\$ 15,820.00</b>
<b>Unit Title: Support to Local Administration Unit / PoLA</b>		<b>Unit Number: 23/LAU/08-01</b>	
Support to ExCom LAU	Month	12	\$ 6,105.50
Organise C/S Council Congress	Congress	1	\$ 408.00
NREM special activity cost	Month	12	\$ 3,720.00
Accountability Working Group	Month	12	\$ 0.00
Seth Koma special activity costs	Month	3	\$ 1,500.00
Training and Capacity Building for ExCom LAU	Person-Day	(0F+3M) X 6D	\$ 583.00
Training and Capacity Building by ExCom LAU	Day	(4F+35M) X 10D	\$ 279.00
Contingencies			\$ 0.00
<b>Sub-total of unit</b>			<b>\$ 12,595.50</b>
<b>Contract Title: Primary school education supports</b>		<b>Contract Number: 23/EDU/0801-00</b>	
Operational Support	Month / item	12	\$ 600.00
Monitoring	Person-Day	40	\$ 220.00
Teacher training	Person-Day	(26F+30M) X 12D	\$ 2,608.00
Capacity building for cluster school committees	Person-Day	(10F+12M) X 3D	\$ 2,401.00
Contingencies			\$ 171.00
<b>Sub-total of contract</b>			<b>\$ 6,000.00</b>
<b>Contract Title: Support to Women participation in the Development</b>		<b>Contract Number: 23/GEN/0801-01</b>	
Gender campaign	Event	1	\$ 1,200.00
Operational Support	Month / item	12	\$ 1,150.00
Monitoring	Person-Day	36	\$ 330.00
DWVA support to gender mainstreaming	Meeting	5	\$ 2,204.50
Domestic violence prevention / trafficking prevention program	Person-Day	240	\$ 499.00
Contingencies			\$ 104.50
<b>Sub-total of contract</b>			<b>\$ 5,488.00</b>
<b>Contract Title: Primary health care</b>		<b>Contract Number: 23/HEA/0801-00</b>	
Health centres	Health Centre	4	\$ 756.00
Awareness campaign	Event	5	\$ 1,060.00
Operational Support	Month / item	12	\$ 420.00
Monitoring	Person-Day	40	\$ 165.00
Advanced training for medical personel	Person-Day	(30F+2M) X 2D	\$ 362.00

NCDD Standard Outputs			Budget
Output Description	Unit	Quantity	
Continuing health education	Person-Day	(100F+102M) X 20D	\$ 2,100.00
Contingencies			\$ 137.00
<b>Sub-total of contract</b>			<b>\$ 5,000.00</b>
<b>Contract Title: Support to Municipal Development Investment Planning and Capacity Building</b>		<b>Contract Number: 23/PLA/0801-01</b>	
Provincial Development Plan	PDP	1	\$ 284.00
Commune database	Data book	12	\$ 1,273.00
District Integration	Workshop	1	\$ 565.00
Operational Support	Month / item	12	\$ 1,510.00
Monitoring	Person-Day	24	\$ 84.00
Evaluation	Report	4	\$ 27.50
Training on planning	Person-Day	(22F+88M) X 8D	\$ 470.00
Contingencies			\$ 111.50
<b>Sub-total of contract</b>			<b>\$ 4,325.00</b>
<b>Contract Title: Rural Road Rehabilitation</b>		<b>Contract Number: 23/RRD/0801-00</b>	
Road construction/rehabilitation	Metre	600	\$ 3,234.00
Operational Support	Month / item	12	\$ 372.00
Monitoring	Person-Day	20	\$ 110.00
Evaluation	Report	1	\$ 120.00
Contingencies			\$ 64.00
<b>Sub-total of contract</b>			<b>\$ 3,900.00</b>
<b>Contract Title: Resort improvement supports</b>		<b>Contract Number: 23/TOU/0801-00</b>	
Operational Support	Month / item	12	\$ 600.00
Monitoring	Person-day	40	\$ 220.00
Resort Management Committee	Committee	1	\$ 4,282.00
Training on Tourism	Person-Day	(22F+34M) X 2D	\$ 308.00
Contingencies			\$ 77.00
<b>Sub-total of contract</b>			<b>\$ 5,487.00</b>
<b>Contract Title: Clean water and community sanitation</b>		<b>Contract Number: 23/WAS/0801-00</b>	
Ring wells construction	Well	9	\$ 4,182.00
Latrines Construction	Latrine	25	\$ 1,542.00
Operational Support	Month / item	12	\$ 530.20
Monitoring	Person-Day	10	\$ 55.00
Contingencies			\$ 33.00
<b>Sub-total of contract</b>			<b>\$ 6,342.20</b>
<b>GRAND TOTAL</b>			<b>\$ 105,138.14</b>

Note: M= Male, F= Female, D=day

### 13.4.2 PIF and DIF Projects for 2009

NCDD Standard Outputs			Budget
Output Description	Unit	Quantity	
<b>Unit Title: Support to Contract Admin Unit</b>		<b>Unit Number: 23/CAU/09-00</b>	
CAU staff support costs	Month	12	\$ 11,760.00
Program administrative support	Month	12	\$ 6,387.24
Publicity	Month	12	\$ 2,845.00
Program meetings and workshops	Month	12	\$ 1,343.00
Program support staff	Month	12	\$ 1,920.00
Training and capacity building by/for CAU	Person-Day	(3F+19M) X 5D	\$ 335.00
Contingencies			\$ 985.25
<b>Sub-total of unit</b>			<b>\$ 25,575.49</b>
<b>Unit Title: Support to Finance Unit</b>		<b>Unit Number: 23/FIN/09-00</b>	
Support to ExCom Finance staff	Month	12	\$ 5,946.00
Support to Provincial Treasury staff	Month	12	\$ 180.00
Training and capacity building by/for Finance staff	Person-Day	(8F+37M) X 1D	\$ 98.00
Contingencies			\$ 0.00
<b>Sub-total of unit</b>			<b>\$ 6,224.00</b>
<b>Unit Title: Support to Technical Support Unit</b>		<b>Unit Number: 23/TSU/09-00</b>	
Support to ExCom TSU	Month	12	\$ 4,890.00
Other TSU costs	Month	1	\$ 160.00
Training and Capacity Building by ExCom TSU	Person-Day	(4F+26M) X 1D	\$ 83.00
Contingencies			\$ 0.00
<b>Sub-total of unit</b>			<b>\$ 5,133.00</b>
<b>Unit Title: Support to Project to Support Democratic Development through Decentralization and Deconcentration</b>		<b>Unit Number: 23/PSD/09-00</b>	
PSDD staff support costs	Month	12	\$ 8,717.00
PSDD support staff	Month	12	\$ 5,200.00
Contingencies			\$ 381.00
<b>Sub-total of unit</b>			<b>\$ 14,298.00</b>

NCDD Standard Outputs			Budget
Output Description	Unit	Quantity	
<b>Unit Title: Support to Local Administration Unit / PoLA</b>		<b>Unit Number: 23/LAU/09-00</b>	
Support to ExCom LAU	Month	12	\$ 7,385.00
Organise C/S Council Congress	Congress	1	\$ 300.00
NREM special activity cost	Month	12	\$ 3,360.00
Accountability Working Group	Month	12	\$ 210.00
CCWC	Committee	12	\$ 500.00
Training and Capacity Building for ExCom LAU	Person-Day	(0F+13M) X 7D	\$ 212.00
Training and Capacity Building by ExCom LAU	Day	(5F+30M) X 10D	\$ 1,442.75
Contingencies			\$ 0.00
<b>Sub-total of unit</b>			<b>\$ 13,409.75</b>
<b>Contract Title: To Support Agro-Environmental Assessment Sampling and</b>		<b>Contract Number: 23/AGR/0901-00</b>	
Agro-Eco system Analysis conducted	Book	7	\$ 1,011.00
Operational Support	Month / item	12	\$ 180.00
Monitoring	Person-Day	6	\$ 45.00
Farmers trained on related Fisheries extension techniques and demonstration.	Person-Day	(F+M) X 1D	\$ 2,802.50
Contingencies			\$ 93.50
<b>Sub-total of contract</b>			<b>\$ 4,132.00</b>
<b>Contract Title: To Support Primary School Education</b>		<b>Contract Number: 23/EDU/0901-00</b>	
Operational Support	Month / item	12	\$ 720.00
Monitoring	Person-Day	12	\$ 360.00
Teacher training	Person-Day	(F+M) X 1D	\$ 3,828.00
Capacity building for cluster school committees	Person-Day	(F+M) X 1D	\$ 3,407.50
Contingencies			\$ 163.50
<b>Sub-total of contract</b>			<b>\$ 8,479.00</b>
<b>Contract Title: To Support Women Participation in Development Works</b>		<b>Contract Number: 23/GEN/0901-00</b>	
DWVA support to gender mainstreaming	Meeting	1	\$ 1,111.00
Operational Support	Month / item	12	\$ 1,020.00
Monitoring	Person-Day	36	\$ 210.00
Gender campaign	Event	1	\$ 1,115.00
Training courses in gender mainstreaming	Person-Day	(F+M) X 1D	\$ 1,358.00
Contingencies			\$ 11.00
<b>Sub-total of contract</b>			<b>\$ 4,825.00</b>
<b>Contract Title: To Support Primary Health Care</b>		<b>Contract Number: 23/HEA/0901-00</b>	
Health centres	Health Centre	4	\$ 1,584.00
Awareness campaign	Event	4	\$ 2,976.00
Operational Support	Month / item	12	\$ 420.00
Monitoring	Person-Day	40	\$ 180.00
Continuing health education	Person-Day	(F+M) X 1D	\$ 3,208.00
Provided education on STD/HIV/AIDS to general population and high risk groups	Person-Day	(F+M) X 1D	\$ 408.00
Contingencies			\$ 140.00
<b>Sub-total of contract</b>			<b>\$ 8,916.00</b>
<b>Contract Title: To Support the Provincial Development Plan</b>		<b>Contract Number: 23/PLA/0901-00</b>	
Provincial Development Investment Plan	PDIP	1	\$ 285.00
Commune database	Data book	50	\$ 1,863.00
District Integration	Workshop	2	\$ 625.00
Operational Support	Month / item	12	\$ 1,600.00
Evaluation	Report	1	\$ 35.00
Training on planning	Person-Day	(F+M) X 1D	\$ 521.00
Contingencies			\$ 151.00
<b>Sub-total of contract</b>			<b>\$ 5,080.00</b>
<b>Contract Title: To Support the Resorts Improvement</b>		<b>Contract Number: 23/TOU/0901-00</b>	
Resort Management Committee	Committee	2	\$ 3,073.00
Operational Support	Month / item	12	\$ 512.00
Monitoring	Person-day	40	\$ 180.00
Training on Tourism	Person-Day	(F+M) X 1D	\$ 462.00
Contingencies			\$ 95.00
<b>Sub-total of contract</b>			<b>\$ 4,322.00</b>
<b>Contract Title: To support Community Clean Water and Sanitation</b>		<b>Contract Number: 23/WAS/0901-00</b>	
Ring wells construction	Well	10	\$ 7,288.00
Operational Support	Month / item	12	\$ 5,060.20
Monitoring	Person-Day	20	\$ 150.00
Contingencies			\$ 230.00
<b>Sub-total of contract</b>			<b>\$ 12,728.20</b>
<b>GRAND TOTAL</b>			<b>\$ 113,122.44</b>

Note: M= Male, F= Female, D=day

## **13.5 Other projects in the Province**

### **13.5.1 Rural Poverty Reduction Program (RPRP)**

*There are no RPRP projects being implemented in this district or province at this time. The RPRP is only being implemented in Svay Rieng and Prey Veng*

#### **13.5.1.1 RPRP Projects from 2006 to 2008**

*No RPRP projects in this province at this time*

#### **13.5.1.2 RPRP Projects in 2009**

*No RPRP projects in this province at this time*

### **13.5.2 Seth Korma 2007 to 2009**

#### **13.5.2.1 Seth Korma 2007 Estimated Expenditure and Outputs in 2007**

*There are no Seth Korma projects being implemented in this province at this time.*  
Source: UNICEF

#### **13.5.2.2 Seth Korma 2008 Estimate Expenditure and Outputs in 2008**

*There are no Seth Korma projects being implemented in this province at this time.*  
Source: UNICEF

#### **13.5.2.3 Seth Korma 2009 Budget and planned Outputs**

*There are no Seth Korma projects being implemented in this province at this time.*  
**Source:** UNICEF

# **SECTION D: SERVICES AND ORGANIZATIONS**



## 14 Infrastructure

### 14.1 Lengths of and Expenditure on Roads in 2008 by District

Roads	KEP	Damnak Chang Eour	KEP
Length of paved road in the district in Km	18	3	15
Length of unpaved roads in the district in Km	32	1	31
Amount spent on construction of roads in 2008 (\$)	45,441	29,941	15,500
Amount spent on repair and rehabilitation of roads in 2008 (\$)	n/a	n/a	n/a

**Note 1:** Please note that these data are not necessarily complete or correct. The data are derived from government agencies at provincial and district level which used different recording systems, did not always have complete data or were, sometimes, less than willing to share their data.

**Note 2:** Please be aware that these data are incomplete due to the fact that the amounts for the construction, repair and rehabilitation recorded reflect only funds provided by the government, not the contributions by any other parties.

### 14.2 Scale of and Expenditure on Irrigation in 2008 by District

Irrigation	KEP	Damnak Chang Eour	KEP
Number of irrigation schemes operating in 2008	16	12	4
Total nr of hectares under irrigation in dry season 2008	1,368	428ha	940ha
Total funds spent in 2008 on construction of irrigation systems (\$)	39,227	20,350	18,877
Total funds spent in 2008 on rehabilitation/repair of irrigation systems (\$)	4,851	3,755	1,096
Total funds spent in 2008 on operation and maintenance (\$)	n/a	0	0

**Note 1:** Please note that these data are not necessarily complete or correct. The data are derived from government agencies at provincial and district level which used different recording systems, did not always have complete data or were, sometimes, less than willing to share their data.

**Note 2:** Please be aware that the data above are incomplete as these only reflect funds provided by the government, not the contributions by farmers or other parties.

### 14.3 Power Supply in 2008 by District

Electricity	KEP	Damnak Chang Eour	KEP
Total number of electricity connections to households	891	391	500
Total number of electricity connections to agencies, companies, organizations	36	2	34
Total volume in KWh of electricity consumed last in 2008	n/a	n/a	n/a
Total amount collected from users for consumed electricity (\$)	6,038	6,038	n/a
Per capita electricity consumption in 2008 in Kwh	30	30	n/a

**Note 1:** Please note that these data are not necessarily complete or correct. The data are derived from government agencies at provincial and district level which used different recording systems, did not always have complete data or were, sometimes, less than willing to share their data.

**Note 2:** These data only record electricity provided by electricity companies and does not include homes powered by generators or batteries (for this information see Section B: General Profile, Part 1: General Information; table 1.3.1 and chart 1.3.4).

**Note 3:** In most provinces electricity is only provided through town-based networks

**Note 4:** Per capita consumption is calculated by dividing the total volume of electricity produced in 2008 by the number of people living in each district as per the 2008 census (for the provincial data it is calculated against the number of people living in the province)

## 15 Health Facilities

Please note that the Operational District (health) boundaries are different from the administrative district boundaries. Therefore the data provided here show the facilities, staff, NGOs etc in each Operational District within the province NOT the usual administrative district.

### Acronyms

<b>Com Cov</b>	Commune Covered	<b>MW2</b>	Secondary Midwives
<b>CPA</b>	Complementary Package of Activities	<b>NU1</b>	Primary Nurse
<b>Dr</b>	Doctor	<b>NU2</b>	Secondary Nurse
<b>FDH</b>	Former District Hospital	<b>OD</b>	Operational District
<b>HC</b>	Health Center	<b>Others</b>	Other Staffs
<b>HC (NB)</b>	Health Center no building	<b>PHD</b>	Provincial Health Department
<b>HP</b>	Health Post	<b>Pop 04-05</b>	Population Covered 2004 or 2005
<b>MA</b>	Medical Assistant	<b>RH</b>	Referral Hospital
<b>MPA</b>	Minimum Package of Activities	<b>Vil Cov</b>	Village Covered
<b>MW1</b>	Primary Midwives	<b>VIL-HC</b>	Distance from Village to Health Center

### 15.1 Health Facilities by Operational District

Krong Kep	OD	RH	HC	HP
Kep Ville	1	1	4	
<b>Total</b>	<b>1</b>	<b>1</b>	<b>4</b>	<b>0</b>

### 15.2 Health Facilities and Staff by Operational District, 2008

This table shows health facilities, number of staff by type and coverage of health facilities in each operational district.

No	Facility Name	Type	Class	Dr	Ma	Nu2	Nu1	Mw2	Mw1	Others	Com Cov	Vil Cov	Pop. 04-05
<b>Kep Ville</b>													
1	Angkoul	HC	MPA	0	0	1	4	1	0	1	1	4	7,355
2	Ou Krasar	HC	MPA	0	0	2	3	1	0	0	1	2	6,334
3	Pong Teuk	HC	MPA	0	1	1	5	1	0	0	1	5	8,905
<b>Total:</b>				<b>0</b>	<b>1</b>	<b>4</b>	<b>12</b>	<b>3</b>	<b>0</b>	<b>1</b>	<b>3</b>	<b>11</b>	<b>22,594</b>

Source: MEDiCAM



### 15.3 Deliveries in 2007, by Operational District

OD	Deliveries	Deliveries at home		Deliveries	Total deliveries	Total deliveries
	at HC	By Health Staff	ByTBAs	at RH	by Health Staff	by health staff and TBAs
Kep	6	95	251	71	172	423
<i>Sub-total</i>	6	95	251	71	172	423

Source: MoH, Annual Statistics 2007

### 15.4 Major Health NGOs active in the Province, by Operational District

#### Operational District: Kep Ville

CIH (Center for International Health, University of Toronto)

Phone: 023353936, Email: Bunthoeun\_tho@yahoo.com, Contact Person: Thon Bunthoeun

CWF (Cambodian World Family)

Phone: 023425047, Email: gentry@rmi.net, Contact Person: Kathleen Gentry

FHI/IMPACT (Family Health International/Impact)

Phone: 023211914, Email: info@fhi.org.kh, Contact Person: Song Ngak

WFP (World Food Program)

Phone: 023212137, Email: mory.heng@wfp.org, Contact Person: Heng Mory

#### Operational District: Unknown

WB (The World Bank)

Phone: 023217301, Email: lhawkins@worldbank.org, Contact Person: Simth Beng

## 16 Education<sup>2</sup>

### 16.1 Schools, Classes, Students and Staff in 2007/2008

District	Number of Schools	Disadv. Schools	Number of Classes	Classes in Pagoda	Enrollment		Repeaters		Teaching Staff		Non-Teaching Staff		Total Staff	
					Total	Girl	Total	Girl	Total	Female	Total	Female	Total	Female
Damnak Chang'aeur	22	0	140	0	5,188	2,555	327	152	151	36	40	6	191	42
Kaeb	13	0	108	0	4,147	1,950	342	122	166	85	28	8	194	93
<b>Whole Province</b>	<b>35</b>	<b>0</b>	<b>248</b>	<b>0</b>	<b>9,335</b>	<b>4,505</b>	<b>669</b>	<b>274</b>	<b>317</b>	<b>121</b>	<b>68</b>	<b>14</b>	<b>385</b>	<b>135</b>
- Urban Area	35	0	248	0	9,335	4,505	669	274	317	121	68	14	385	135

### 16.2 Characteristics of Schools and School Principals in 2007/2008

District	Number of Schools				2 - Shift Schools	Floating Schools	Schools in Pagoda	Attached Pre-Sch.	Schools Without		Characteristics of School Principals (Incharge)			
	Pre-Sch.	Primary	College	Lycee					Water Sup.	Toilet	Avg. Age	Avg. Service	U.Sec+ Ed.	Female
Damnak Chang'aeur	5	15	2	0	15	0	8	5	9	4	45.1	18.8	3	1
Kaeb	4	6	2	1	6	0	1	4	2	2	39.2	19.1	1	3
<b>Whole Province</b>	<b>9</b>	<b>21</b>	<b>4</b>	<b>1</b>	<b>21</b>	<b>0</b>	<b>9</b>	<b>9</b>	<b>11</b>	<b>6</b>	<b>42.9</b>	<b>18.9</b>	<b>4</b>	<b>4</b>
- Urban Area	9	21	4	1	21	0	9	9	11	6	42.9	18.9	4	4

### 16.3 Enrollment by Level of Education, 2006/2007

District	Number of Schools	Pre-school		Primary		Lower Sec.		Upper Sec.		Total		% Female	
		Total	Girl	Total	Girl	Total	Girl	Total	Girl	Total	Girl	Primary	All Level
Damnak Chang'aeur	20	161	74	4,589	2,206	590	288	0	0	5,340	2,568	48.1	48.1
Kaeb	13	148	64	2,370	1,103	1,198	599	588	246	4,304	2,012	46.5	46.7
<b>Whole Province</b>	<b>33</b>	<b>309</b>	<b>138</b>	<b>6,959</b>	<b>3,309</b>	<b>1,788</b>	<b>887</b>	<b>588</b>	<b>246</b>	<b>9,644</b>	<b>4,580</b>	<b>47.5</b>	<b>47.5</b>
- Urban Area	33	309	138	6,959	3,309	1,788	887	588	246	9,644	4,580	47.5	47.5

<sup>2</sup> All the data for section 12 comes from the Ministry of Education, Youth and Sport (MoEYS)

### 16.4 Enrollment by Level of Education 2007/2008

District	Number of Schools	Pre-school		Primary		Lower Sec.		Upper Sec.		Total		% Female	
		Total	Girl	Total	Girl	Total	Girl	Total	Girl	Total	Girl	Primary	All Level
Damnak Chang'aeur	22	127	58	4,209	2,035	852	462	0	0	5,188	2,555	48.3	49.2
Kaeb	13	132	67	2,244	1,054	1,079	524	692	305	4,147	1,950	47.0	47.0
<b>Whole Province</b>	<b>35</b>	<b>259</b>	<b>125</b>	<b>6,453</b>	<b>3,089</b>	<b>1,931</b>	<b>986</b>	<b>692</b>	<b>305</b>	<b>9,335</b>	<b>4,505</b>	<b>47.9</b>	<b>48.3</b>
- Urban Area	35	259	125	6,453	3,089	1,931	986	692	305	9,335	4,505	47.9	48.3

### 16.5 New Intake and Enrollment by Level and Age (Both Sexes), 2007/2008

District	Grade 1 Intake		Primary Enrollment		Grade 7 Intake		L. Sec. Enrollment		Grade 10 Intake		U. Sec. Enrollment		% Over-age Enrollment in		
	Total	Aged 6	Total	Aged 11+	Total	Aged 12	Total	Aged 14+	Total	Aged 15	Total	Aged 17+	Primary	L. Sec.	U. Sec.
Damnak Chang'aeur	657	318	4,209	1,221	425	107	852	411	0	0	0	0	29.0	48.2	0.0
Kaeb	290	174	2,244	518	343	90	1,079	519	329	90	692	262	23.1	48.1	37.9
<b>Whole Province</b>	<b>947</b>	<b>492</b>	<b>6,453</b>	<b>1,739</b>	<b>768</b>	<b>197</b>	<b>1,931</b>	<b>930</b>	<b>329</b>	<b>90</b>	<b>692</b>	<b>262</b>	<b>26.9</b>	<b>48.2</b>	<b>37.9</b>
- Urban Area	947	492	6,453	1,739	768	197	1,931	930	329	90	692	262	26.9	48.2	37.9

### 16.6 Condition of School Buildings, 2007/2008

District	Total Number of		Concrete/Brick Structure		Wooden Structure		Bamboo Structure		New Buildings		Buildings Without Good		
	Buildings	Rooms	Buildings	Rooms	Buildings	Rooms	Buildings	Rooms	Repaired	Constructed	Floor	Roof	Wall
Damnak Chang'aeur	26	111	25	108	1	3	0	0	0	2	4	2	2
Kaeb	26	120	26	120	0	0	0	0	0	5	6	0	2
<b>Whole Province</b>	<b>52</b>	<b>231</b>	<b>51</b>	<b>228</b>	<b>1</b>	<b>3</b>	<b>0</b>	<b>0</b>	<b>0</b>	<b>7</b>	<b>10</b>	<b>2</b>	<b>4</b>
- Urban Area	52	231	51	228	1	3	0	0	0	7	10	2	4

### 16.7 Condition of Classrooms and Existence of Separate School Office and Library, 2007/2008

District	Number of Classrooms	Number of Classrooms			Classrooms Without Good			Number of furniture needed				Schools with Separate	
		in Pagoda	Repaired	New Constr.	Floor	Roof	Wall	Desks	Chairs	Blk.board	Tchr.Table	Office	Library
Damnak Chang'aeur	90	0	0	10	10	4	6	30	38	1	10	7	6
Kaeb	87	0	0	17	9	0	9	31	30	0	0	8	6
<b>Whole Province</b>	<b>177</b>	<b>0</b>	<b>0</b>	<b>27</b>	<b>19</b>	<b>4</b>	<b>15</b>	<b>61</b>	<b>68</b>	<b>1</b>	<b>10</b>	<b>15</b>	<b>12</b>
- Urban Area	177	0	0	27	19	4	15	61	68	1	10	15	12

### 16.8 Community Participation and Financing, 2007/2008

District	Parent Association				Commu. Teachers	Teaching Monks	PAP Fund (Riel)		Number of Schools Obtaining Funds from				
	Exists	Held Meet.	Total	Female			per Student	per School	Sch. Income	Community	Gvt. For building	Abroad	IOs/ NGOs
Damnak Chang'aeur	20	20	6	1	0	0	10,589	2,886,237	0	1	1	0	0
Kaeb	13	13	6	2	0	0	11,808	3,891,708	1	2	1	0	0
<b>Whole Province</b>	<b>33</b>	<b>33</b>	<b>6</b>	<b>1</b>	<b>0</b>	<b>0</b>	<b>11,117</b>	<b>3,275,452</b>	<b>1</b>	<b>3</b>	<b>2</b>	<b>0</b>	<b>0</b>
- Urban Area	33	33	6	1	0	0	11,117	3,275,452	1	3	2	0	0

### 16.9 Indicators on Students and Staff by District, 2007/2008

District	Pupil Teacher Ratio	Pupil Staff Ratio	Pupil Class Ratio	Pupil Classroom Ratio	Classes per Classroom	Classroom Area (m2) per Pupil	Percentage of Total Students in				Percentage of	
							Pre-school	Primary	Lower Secondary	Upper Secondary	Non-tching Staff	Female Staff
Damnak Chang'aeur	34.4	27.2	37.1	57.6	1.6	1.2	2.4	81.1	16.4	0.0	20.9	22.0
Kaeb	25.0	21.4	38.4	47.7	1.2	1.2	3.2	54.1	26.0	16.7	14.4	47.9
<b>Whole Province</b>	<b>29.4</b>	<b>24.2</b>	<b>37.6</b>	<b>52.7</b>	<b>1.4</b>	<b>1.2</b>	<b>2.8</b>	<b>69.1</b>	<b>20.7</b>	<b>7.4</b>	<b>17.7</b>	<b>35.1</b>
- Urban Area	29.4	24.2	37.6	52.7	1.4	1.2	2.8	69.1	20.7	7.4	17.7	35.1

## 17 Private Sector organizations in the District

### 17.1 Registered Companies in 2008, by district

On private sector at commune and/or district level	KEP	Damnak Chang Eour	KEP
<b>Businesses and Companies</b>			
Number of registered agricultural enterprises (except family farms)	n/a	0	0
Number of registered shops, restaurants, transporters and other services	278	62	216
Number of manufacturing companies	27	23	4
Number of registered forestry enterprises	n/a	0	0
Number of registered mining companies	-	0	0
Number of financial institutions	10	10	n/a
Number of other commercial institutions	n/a	n/a	n/a
Estimated number of informal enterprises (not registered)	n/a	n/a	n/a
<b>Employment</b>			
Number of people employed in 2008 by companies or any other enterprises	443	287	156
<b>Investment</b>			
Amount invested in 2008 by private sector (\$)	n/a	n/a	n/a
<b>Markets</b>			
Number of markets, operating at least weekly	5	2	3

**Note:** These data are not comprehensive as different companies and business are registered with different departments and not all departments were able or willing to provide detailed information. The number of informal enterprises reflects a rough estimate, made at provincial level and could not be verified.

**Source:** Data from SPPA's

### 17.2 Credit to Farmers in 2008, by district

Credit	KEP	Damnak Chang Eour	KEP
Volume of credit provided to farmers in 2008 (\$)	n/a	n/a	n/a
Number of farmers receiving credit in 2008	175	83	92
Volume of credit provided to companies in 2008 (\$)	n/a	n/a	n/a

**Note:** Please note that these data are not necessarily complete or correct. The data are derived from government agencies at provincial and district level which used different recording systems, did not always have complete data or were, sometimes, less than willing to share their data.



# **SECTION E: MISCELLANEOUS INFORMATION**





## 18 Data on Poverty

### 18.1 Predicted Poverty Rates for 2009, by commune

The **Predicted Family Poverty Rate** is based on a statistical model (robust multilevel mixed effect regression) at village level developed by the NCDD M&E Unit and uses CDB data for making an estimate of the predicted poverty rate (this is: the portion of total families in the district or commune who are deemed poor) for the following year using current year data.

The basis for this predicted poverty rate also uses IDPoor (a project of the Ministry of Planning with technical assistance provided by GTZ) data.

District	Commune	2004	2009
Damnak Chang'aeur	Angkaol	35.70%	23.80%
Damnak Chang'aeur	Ou Krasar	33.90%	23.20%
Damnak Chang'aeur	Pong Tuek	35.40%	25.80%
Kaeb	Kaeb	27.90%	13.90%
Kaeb	Prey Thum	31.70%	22%

### 18.2 Poverty data from Survey

The Ministry of Planning IDPoor Program has developed standardized Procedures for Identification of Poor Households in rural areas. These Procedures are implemented using a participatory and consultative process by sub-national government structures and community representatives.

The IDPoor Program is managed by the Ministry of Planning (MOP), in cooperation with the Ministry of Interior's Department of Local Administration (DOLA). The program is supported by the Federal Republic of Germany, with technical assistance provided by German Technical Cooperation (GTZ). In 2009, AusAID also provided funding support to the Program.

#### Objective

The IDPoor Program aims to implement the Procedures for Identification of Poor Households in rural areas as widely as possible, in order to provide data on the level of poverty of areas and households that can be used by a large range of institutions and organizations for targeting services and development assistance to poor areas and poor households.

**Coverage:** During 2007, 2008 and 2009 the IDPoor Procedures have been implemented in 18 provinces (with partial or complete coverage), covering a total of around 7000 rural villages. The MOP and a number of NGO partners who are Health Equity Fund Operators have collaborated in collecting this data from different areas.

**Categorization:** Identified poor households are classified under two poverty categories: Poor Level 1 (very poor), and Poor Level 2 (poor). Households are classified based on data collected using a standard questionnaire, together with consideration by villagers of these households' special circumstances.

**Further information:** Please go to the IDPoor Program webpage at [www.mop.gov.kh/Projects/IDPoor/tabid/154/Default.aspx](http://www.mop.gov.kh/Projects/IDPoor/tabid/154/Default.aspx)

*This province has not yet been covered by IDPoor*