

# KINGDOM OF CAMBODIA

Nation Religion King

r r t s s

## National Committee for Sub-National Democratic Development (NCDD)



## Otdar Meanchey Data Book 2009

GIS code: 22

October 2009



# **Otdar Meanchey Data Book 2009**

**GIS code: 22**



# Table of Contents

List of Abbreviations.....	i
Glossary .....	iii
Preface.....	vii
Introduction.....	1
<b>SECTION A: MAPS .....</b>	<b>3</b>
<b>1. Administration and Infrastructure .....</b>	<b>5</b>
<b>2. Land Use and Natural Resources.....</b>	<b>5</b>
<b>3. Poverty map.....</b>	<b>7</b>
3.1. 2004 Poverty Map.....	9
3.2. 2009 Poverty Map.....	9
<b>4. Land area and distance .....</b>	<b>9</b>
4.1. Land area by district, mid 2009.....	11
4.2. Land used area by category, 2006.....	11
4.3. Distances between District Center and Provincial Town .....	11
<b>SECTION B: PROVINCIAL PROFILE.....</b>	<b>13</b>
<b>5. General Information .....</b>	<b>15</b>
<b>5.1. Population of the Province.....</b>	<b>15</b>
5.2 Occupations .....	16
5.3 Property.....	18
<b>6 Infrastructure and Economy .....</b>	<b>20</b>
6.1 Roads in meters, 2006-2008.....	20
6.2 Sewerage Pipes in meters, 2006-2008.....	20
6.3 Drainage and Bridges .....	20
6.4 Services in the Province.....	21
6.5 Agriculture .....	21

<b>7</b>	<b>Social Aspects.....</b>	<b>32</b>
7.1	<i>Education .....</i>	32
7.2	<i>Health.....</i>	39
7.3	<i>Water and Sanitation.....</i>	40
7.4	<i>Vulnerable groups.....</i>	44
7.5	<i>Migration.....</i>	46
<b>8</b>	<b>Natural Resources and Environment (NRE).....</b>	<b>48</b>
8.1	<i>Families involved with NRE issues, 2006-2008.....</i>	48
8.2	<i>Percentage of Families involved with Natural Resource issues, by District, for 2008.....</i>	48
8.3	<i>Percentage Houses with access to Garbage collection and Families affected by environmental Pollution, by District, for 2008.....</i>	48
8.4	<i>Percentage Families using chemical Fertilizer and chemical Pesticides, by District, for 2008 .....</i>	49
<b>9</b>	<b>Administration and Security .....</b>	<b>50</b>
9.1	<i>Birth Registration, 2006-2009 .....</i>	50
9.2	<i>Number of unregistered Infants born in 2008, by District .....</i>	50
9.3	<i>Registered criminal Cases, 2006-2008.....</i>	50
9.4	<i>Registered criminal Cases per 10,000 people, by District, for 2008.....</i>	50
9.5	<i>Number of registered Land Disputes, by District, in 2008 .....</i>	50
<b>10</b>	<b>Gender.....</b>	<b>51</b>
10.1	<i>Reported Domestic Violence, 2006-2008.....</i>	51
10.2	<i>Percentage of reported cases of Families experiencing domestic Violence, by District, in 2008 .....</i>	51
10.3	<i>Women's involvement, 2006-2008.....</i>	51
10.4	<i>Percentage of Female Participants in Civil Society and of 18-60 year women with uncertain Jobs, by District, in 2008.....</i>	52
10.5	<i>Female-headed Households, 2006-2008.....</i>	52
10.6	<i>Percentage female-headed Households and with Children of less than 5 years old, by District in 2008 .....</i>	52

<b>11</b>	<b>Indigenous People in the District .....</b>	<b>53</b>
11.1	<i>Ethnic Minorities in the District, 2006-2008.....</i>	53
11.2	<i>Other Minorities in the District, 2006-2008.....</i>	53
<b>SECTION C: PLANS AND PROJECTS .....</b>		<b>55</b>
<b>12</b>	<b>Priorities and Plans.....</b>	<b>57</b>
12.1	<i>Priorities of the Districts in the Province for 2009 by Sector.....</i>	57
12.2	<i>Total Expenditure on C/S Fund Projects by sector and district between 2005 and 2008 ...</i>	59
<b>13</b>	<b>District level Projects from 2006 to 2009 .....</b>	<b>60</b>
13.1	<i>District Initiative Infrastructure Projects from 2006 to 2009 .....</i>	61
13.2	<i>District Initiative Service Projects from 2006 to 2009 .....</i>	62
13.3	<i>Inter Commune Council Projects in 2008 and 2009 .....</i>	64
13.4	<i>Provincial Investment Fund (PIF) and District Investment Fund (DIF) .....</i>	65
13.5	<i>Other projects in the Province.....</i>	69
<b>SECTION D: SERVICES AND ORGANIZATIONS .....</b>		<b>71</b>
<b>14</b>	<b>Infrastructure .....</b>	<b>73</b>
14.1	<i>Lengths of and Expenditure on Roads in 2008 by District.....</i>	73
14.2	<i>Scale of and Expenditure on Irrigation in 2008 by District.....</i>	73
14.3	<i>Power Supply in 2008 by District .....</i>	73
<b>15</b>	<b>Health Facilities .....</b>	<b>74</b>
15.1	<i>Health Facilities by Operational District .....</i>	74
15.2	<i>Health Facilities and Staff by Operational District, 2008.....</i>	75
15.3	<i>Deliveries in 2007, by Operational District.....</i>	75
15.4	<i>Major Health NGOs active in the Province, by Operational District.....</i>	76
<b>16</b>	<b>Education .....</b>	<b>77</b>
16.1	<i>Schools, Classes, Students and Staff in 2007/2008.....</i>	77
16.2	<i>Characteristics of Schools and School Principals in 2007/2008.....</i>	77
16.3	<i>Enrollment by Level of Education, 2006/2007 .....</i>	78

16.4	<i>Enrollment by Level of Education 2007/2008</i>	78
16.5	<i>New Intake and Enrollment by Level and Age (Both Sexes), 2007/2008</i>	79
16.6	<i>Condition of School Buildings, 2007/2008</i>	79
16.7	<i>Condition of Classrooms and Existence of Separate School Office and Library, 2007/08.</i>	80
16.8	<i>Community Participation and Financing, 2007/2008</i>	80
16.9	<i>Indicators on Students and Staff by District, 2007/2008</i>	81
<b>17</b>	<b>Private Sector organizations in the District</b>	<b>82</b>
17.1	<i>Registered Companies in 2008, by district</i>	82
17.2	<i>Credit to Farmers in 2008, by district</i>	82
	<b>SECTION E: MISCELLANEOUS INFORMATION</b>	<b>83</b>
<b>18</b>	<b>Data on Poverty</b>	<b>85</b>
18.1	<i>Predicted Poverty Rates for 2009, by commune</i>	85
18.2	<i>Poverty data from Survey</i>	85



## List of Abbreviations

#	Number
AGR	Agriculture
BR	Birth Registration
CCs	Commune Councils
C. Pilot	Piloted Commune
C/S	Commune / Sangkat
CBO	Community-Based Organization
CDB	Commune Database
CDPD	Commune Development and Planning Database
CIP	Commune Investment plan
CLTS	Community Led-Total Sanitation
Comm.	Commune
Com Cov	Commune Covered
CPA	Complementary Package of Activities
CPS	Community Preschool
CCWC	Commune Committees for Women and Children
DANIDA	Danish International Development Agency
DDLG	Democratic Development and Local Governance Project (EC-UNDP)
DFID	Department For International Development (UK)
DIF	District Investment Fund
DIP	District Initiative Project
DIS	District Information System
District PDRD	District Office of Rural Development
District WP	District Work Plan
DIW	District Integration Workshop
DMC	Department of Media and Communication
DoLA	Department of Local Administration
Dr	Doctor
DWRM	District Office of Water Resource and Meteorology
ECD	Early Childhood education (part of PE)
EMIS	Education Management Information System
Event IC	Celebration of International Days
FDH	Former District Hospital
GTZ	German Society for Technical Cooperation (Gesellschaft für Technische Zusammenarbeit GmbH)
Ha	Hectare
HC	Health Center
HC (NB)	Health Center (no building)
HH	Headed Household
HSI	Intervention for Health
HP	Health Post
HW	Hand Washing
ICC	Inter Commune Council
IFAD	International Fund for Agricultural Development
IND	Industry
Inter-commune	Inter-Commune Project Management Committee or Inter-commune project
IO	International Organization
JICA	Japan International Cooperation Agency
LASED	Land Allocation for Socio-Economic Development
LAU	Local Administration Unit
LGCR	Local Governance for Children's Rights

M&E	Monitoring and Evaluation
MA	Medical Assistant
MAFF	Ministry of Agriculture, Forestry and Fisheries
MEF	Ministry of Economy and Finance
MoEYS	Ministry of Education, Youth and Sports
MoH	Ministry of Health
MoI	Ministry of Interior
MoP	Ministry of Planning
MoWA	Ministry of Women's Affairs
MoWRAM	Ministry of Water Resources and Meteorology
MPA	Minimum Package of Activities
MW1	Primary Midwives
MW2	Secondary Midwives
n/a	Not available
NCD	National Contracts Database
NCDD	National Committee for Sub-National Democratic Development
NGO	Non-Governmental Organization
NREM	Natural Resources and Environment Management
NRML	Natural Resources Management and Livelihood
NU1	Primary Nurse
NU2	Secondary Nurse
OD	Operational District
ODF	Open Defecation Free
Ope. Costs	Operational Costs
Others	Other Staff
PBW	Public Works
PDoEYS	Provincial Department of Education, Youth and Sport
PDRD	Provincial Department of Rural Development
PDWRM	Provincial Department of Water Resource and Meteorology
PE	Parenting Education
PHAST	Participatory Hygiene and Sanitation Transformation
PHD	Provincial Health Department
PID	Project Information Database
PIF	Provincial Investment Fund
PMC	Project Management Committee
Pop 04-05	Population Covered 2004 or 2005
PSDD	Project to Support Democratic Development through Decentralization and Deconcentration
RRD	Rural Road Development
RH	Referral Hospital
RILGP	Rural Investment and Local Governance Project
RPRP	Rural Poverty Reduction Program
RuLIP	Rural Livelihoods Improvement Program
SIDA	Swedish International Development Cooperation Agency
SPPA	Senior Provincial Program Advisor
TBA	Traditional Birth Attendant
UNDP	United Nations Development Project
UNICEF	United Nations Children's Fund
Vil	Village
Vil Cov	Village Covered
VIL-HC	Distance from Village to Health Center
WASH	Water, Sanitation and Hygiene
WRM	Water Resource and Meteorology

## Glossary

**C/S Fund:** The Commune/Sangkat Fund is established and managed by the Government of Cambodia to provide financial support for development projects and administrative costs of Commune/Sangkat Councils. The amount is determined as a percentage of the National Budget (for 2009: 2.8% over the 2008 budget) and is expected to increase gradually over the years. The total 2009 budget under this fund is \$ 27,643,902 (of which \$ 19,272,170 is for Development Projects and \$ 8,371,731 for Administration). Under the Rural Investment and Local Governance Project the World Bank currently reimburses the costs of development projects if these meet the Bank's criteria.

**CDB:** the Commune Data Base is a national database, compiled by the Ministry of Planning, on the basis of detailed questionnaires, completed at village and commune level, which are then sent to the Departments of Planning for data entry. The most recent round of data collection took place at the end of 2008 (and is reflected in the District Data Books). Commune, District and Provincial Profiles can be generated from this database and should be available from provincial Departments of Planning.

**CDPD:** the Commune Development and Planning Database is a database maintained by Departments of Planning and Ministry of Planning, recording proposed activities as determined and prioritized by Commune and Sangkat Councils; the Temporary Agreements between these councils and supporting agencies, as decided at District Integration Workshops and details on projects that actually take place at commune, district and provincial levels.

**CIP:** The Commune Investment Plan is a rolling three-year plan, developed and decided by the Commune or Sangkat Council. It sets priorities and identifies the projects proposed for the years to come.

**Commune and Sangkat:** the Communes (in rural areas) and Sangkats (in urban areas) are the lowest and smallest units of local government. Councils are elected directly, once in five years, for the 1417 Communes and 204 Sangkats. Within these Communes and Sangkat areas there are 14,119 villages, which have Village Chiefs, but do not constitute a formal level of local government.

**DIA/P:** the District Investment Initiative/ Project is jointly supported by the MDLF (Multi-Donor Livelihood Facility (supporting the NRM&L Program) and PSDD. In 2009 it covers 106 districts, 60% of the total in the country, with a budget of \$ 3.2 million. It is focused on capacity development in planning, democratic development, public competitive procurement, financial management and service delivery.

**DIS:** The District Information System is a national database maintained by NCDD, recording resources, staff, revenue, infrastructure and equipment available in the 193 Districts and Khans throughout the country. The last update took place in July 2009

**District, Municipality and Khan** constitutes the third level of Government in Cambodia. There are 159 rural Districts, 26 Municipalities and 8 Khans of Phnom Penh Capital. They all have Councils which were, for the first time, elected in May 2009, by the Commune/Sangkat Councilors. These councils have a mandate for 5 years.

**DIW:** District Integration Workshops are held between July and October, to bring Commune/Sangkat Councils, looking for support for their projects, together with the governmental and non-governmental agencies that may provide support.

**ICC:** Inter Communes Council projects are executed in 10 provinces under the Democratic and Decentralized Local Governance Project (DDLG). This five year project (2006-2010) is executed by Ministry of Interior and funded by the European Commission and UNDP. The project focuses on improving dialogue partnership and accountability; create a network of Commune Councils at the provincial and national level and support and contribute to local area development for poverty reduction. The work under the ICC component supports investments and services formulated through inter-commune dialogue and planning.

**MEDiCAM:** A non-profit and non-partisan membership organization for NGOs active in Cambodia's health sector. It is the primary networking agency for the country's health-related NGOs.

**NCD:** The National Contracts Database is used for the design of investment projects at provincial and district levels and, once a project is approved, for monitoring the progress of investment projects. The NCD has been continuously adapted for use by different donor projects and currently is used for PSDD, DANIDA NRMLP, UNICEF, IFAD, Canadian CIDA projects. The database was first designed in 2005 and is maintained by the NCDD with quarterly updates.

**NCDD:** the National Committee for sub-National Democratic Development is the inter-ministerial body charged with the implementation of the Organic Law (a key legislative document, adopted in 2008, outlining the envisaged decentralization). NCDD also channels substantial financial assistance by a number of Development Partners, to projects and programs at various levels. This amounted to over \$ 91 million in 2008. More information at: [www.ncdd.gov.kh](http://www.ncdd.gov.kh), this website also provides access to reports, manuals, legal documents, details on projects and more.

**OD:** the Operational Districts are the districts as defined and used by the Ministry of Health. These do not coincide with the 193 (Administrative) Districts and Khans, as used by all other RGC agencies. The Operational Districts are usually larger, and so there are 77 Operational Districts against 193 administrative Districts and Khans. However they do fit within the boundaries of administrative provinces.

**PID:** The Project Information Database is the database maintained by NCDD at national and sub national level, to follow all aspects of projects by Commune and Sangkat Councils, including the C/S Fund projects.

**PIF:** The Provincial Investment Fund is allocated to all Provinces and Municipalities according to a population based formula. Part of the fund is earmarked for support to planning activities of the Provincial / Municipal Department of Planning; and to gender mainstreaming activities of the Provincial Department of Women's Affairs. The remaining "un-earmarked PIF" is allocated by PRDC to sectoral technical departments against established criteria and in response to proposals with prioritisation taking into account: priorities formulated by the CS Councils and aggregated by District into District Priority Activities Matrices (DPAM); alignment with national planning and poverty alleviation criteria, complementarity with other planned activities; and performance of the Department concerned in implementation of activities in previous years. With this provisional allocation, the Department then programs activities through the District Integration Process. Finally, the agreed activities, plus support costs amounting to no more than 25% of the total, are included in a sub-contract signed between PRDC and the Department, pursuant to the overall PSDD contract signed between NCDD and PRDC. Total budget has been around \$ 2 million per year.

**Province:** the 23 Provinces and Phnom Penh Capital City represent the 2<sup>nd</sup> layer of government. They vary in size, from very small, like Kep (approx. 36,000 people) and Pailin (approx. 70,000 people), or large but with small populations, like Monduliri (over 60,000 people), and Ratanakiri (over 153,000) to densely populated and large, like Kampong Cham (over 1.7 million people) and Kandal (approx. 1.4 Million people).

**PSDD:** the Project to Support Democratic Development through Decentralization and Deconcentration is funded by DFID (UK), SIDA (Sweden) and UNDP and runs from 2006 till the end of 2010 (including a one year extension). Annual budgets range from \$ 11 million to over \$ 18 million. The project provides core technical support to NCDD and to the provinces, financial support to the C/S Fund, District Initiative, Provincial Investment Fund and capacity building support through training, studies and advisory services.

**RILGP:** The Rural Investment and Local Governance Project is the World Bank funded project that provides substantial support to C/S Fund projects and to developing the required infrastructure, policies, systems and skills needed. It started in 2003 with a Loan for \$ 22 million for 2003-2007 and was then extended with a Grant of \$ 36 million for the period of 2007-2010. Discussions about a possible RILGP 2 are taking place between RGC and the World Bank.

**RPRP:** the Rural Poverty Reduction Project is a seven years project from 2004 till 2010, funded by IFAD and UNDP and implemented through the Ministry of Agriculture, Forestry and Fishery, supported by the Ministry of Interior and facilitated by NCDD. The project is active the provinces Prey Veng and Svay Rieng and focuses on 120,600 households below poverty line. The objective is poverty reduction with the active participation of the poor through improved livelihoods, Strengthened capacity, Sustainable farming systems and natural resource management, new and/or rehabilitated infrastructure development, increase accessibility to technology, services and markets for their economic and social development.

**RULIP:** the Rural Livelihoods Improvement Project is implemented by the Ministry of Agriculture Forestry and Fisheries (MAFF)' Project Support Unit- PSU, with the NCDD playing the role of cooperating agency. Funded by IFAD and UNDP, the project will run till 2014. The target group consists of poor households who have little or even no land, few livestock or other assets and often many dependents. The main goal of the project is to directly or indirectly improve the livelihood systems, food security and incomes of a total of 33,900 rural poor, ethnic minority and female headed households in targeted village of Kratie, Preah Vihear and Ratanakiri provinces in a sustainable manner.

**Seth Koma:** The UNICEF funded Seth Koma program focuses on measurable action for children and women. During 2006 -2010 it is implemented in six provinces. Government and UNICEF pursue a set of inter-related goals, addressing critical stages of the life cycle of the child: a) Mothers have safe pregnancies and deliveries and healthy newborns; b) best possible start in life of infant; c) Children enter schools at the right age of six years; d) Children are protected from exploitation, abuse, violence, discrimination and other risks; and e) Youth and adolescents acquire life skills, express their views, participate in the decisions.



## Preface

The Government of Cambodia attaches great importance to optimal use of scarce resources and to participatory planning and management at all levels. The Organic Law which was adopted in 2008 provides the legal context for further steps towards improving and decentralizing planning, management and monitoring, and towards greater accountability and transparency of institutions at sub-national levels.

The Government has established elected Councils at the sub-national levels, and we will progressively give them the responsibilities, together with the human and financial resources, to deliver a wide range of public services. They will be more democratic, more efficient, more transparent and accountable, better at addressing gender and other inequalities, and at fighting corruption. We recognize that development does not come from government alone; it needs the involvement of citizens, civil society and the private sector, and the new system will facilitate this.

A central element in this process is the availability of information on any aspect of development to all concerned parties. The newly elected Councillors at Provincial level, Provincial line departments operating, but also NGOs, Development Partners and citizens throughout Cambodia need information on problems and requirements, resources and opportunities, services and agencies, plans and projects. They will need such information to better understand the present situation, set targets for the future, monitor progress, know what others are doing and to apply resources wisely and this is the reason the Provincial Data books will be so valuable.

The Provincial Data Books are a major step towards full transparency and towards informed planning and decision-making. They provide all available data at Provincial and District level in easily accessible formats, in Khmer and English. This is in addition to the more detailed District Data Books which have been produced for all Districts, which show Commune level information as well.

This is the first time in Cambodia (and possibly in South East Asia) that such detailed information is made so widely available and NCDD should be commended for the hard work that has gone into this. We also thank the Ministry of Planning, which provided the detailed data of the Commune Data Base, the sectoral ministries and provincial authorities who contributed data and the Development Partners who provided financial support.

It is our sincere hope that the publication of the Data Books will strengthen capacities, especially at provincial and district levels, for evidence-based development planning. We also hope that this information will deepen the understanding among Ministries, Provincial Authorities, Development Partners, NGOs and research agencies of the realities at commune and district levels.

We call upon all to use and distribute this information, complement or correct where appropriate and to contribute new data in the years to come.

28<sup>th</sup> March 2010

**Sar Kheng**

Deputy Prime Minister, Minister of Interior  
and Chairman of NCDD





## Introduction

### Purpose

The purpose of the Provincial Data Books is to bring together information on any aspect of life and development of Provinces and Districts, and make this widely available. The primary targets are the newly elected Provincial Councilors, provincial level line departments, other provincial agencies, Development Partners and NGOs operating at this level. They need detailed knowledge on current living conditions, natural resources, infrastructure, agriculture and other economic activities, current service levels, past and planned projects and available resources.

While much information exists on many of the above aspects, it is often hard to access that information and much is lost to reports, databases and statistics that are not widely shared. Data are often only available in one language and often out-of-date, and many reports cover only one sector or region.

We found that these problems are especially acute at the district level and much effort has been put into producing **District Data Books for all Districts, Municipalities and Khans**, which show data at District/Municipality/Khan level and at Commune/Sangkat level. These can be obtained from NCDD or accessed through the NCDD website. However, in the context of decentralization the Provinces may also become a more significant level of local government and development planning, and a source of technical support to district level planning. This creates an urgent need for wide-ranging data to be used for setting base-lines, planning and prioritizing, monitoring and learning.

### Approach

We have attempted to identify and compile all available statistics, reports, maps and other data at province and/or district level. From this we have selected information that is available for all or most provinces, reasonably reliable and up-to-date, sufficiently detailed and of possible interest to development planners, decision makers, agencies and citizens.

The major sources of the information in these Provincial Data Books are:

- a) The Commune Data Base information over the years 2006 to 2009 (the most recent data were collected late last 2008)
- b) Detailed information directly collected from the Ministry of Health, the Ministry of Information, the Ministry of Education, Youth and Sports and (for maps) the Ministry of Land Management, Urban Planning and Construction
- c) The Project Information Database (PID) at NCDD (up-to-date)
- d) The Commune Development and Planning Database (CDPD) (up to date)
- e) The National Contracts Database (NCD) (up to date)
- f) Direct data collection at provincial and district level on private sector, irrigation, roads, and electricity, through provincial agencies
- g) Medical data collected from MediCam
- h) The ID Poor Project – for poverty data on a number of provinces and districts
- i) NCDD's work on predictive poverty rates
- j) Specific projects for project outputs, expenses and budgets (Seth Koma, RILGP, RPRP and ICC)

### Limitations of the data

We are fully aware that the data we collected are not always complete, consistent or correct. While we have rejected information that was wrong or very incomplete, we decided not to aim for statistical and scientific perfection, but to include information that is useful, relevant and comprehensive. We also accepted different sources for the same data as this may encourage discussion on the quality of the respective data.

We strongly encourage anyone who notes errors or incompleteness in these data to contact us and to share their data. We hope that the next round of producing such Provincial Data Books can draw on wider sources and more complete data.

We encourage the Provincial Agencies, who can receive these data also in digital format, not only to use these for their planning and monitoring, but also to start correcting and updating these data and to share new data with NCDD for future use.

## Contents

The information in the following pages is organized in five sections:

**a) Geographical data:** this section provides maps on infrastructure and administration and on land use and natural resources management. These maps are also provided in large format to all Provinces.

**b) Provincial Profile:** this presents wide ranging data, covering 2006 – 2009, at provincial and district level, extracted from the Commune Data Base, but edited for better understanding.

**c) Plans and Projects:** this section presents development priorities determined by Commune and Sangkat Councils, outputs and expenditure of major projects at Province and District level over 2006 – 2008, and plans and budgets for 2009.

**d) Services and Organizations:** this section provides details on key infrastructure (roads and related infrastructure, electricity, irrigation systems) and services in health and education at Province and District level. It also provides information on private sector agencies active in the Province.

**e) Poverty Data:** this section provides predicted poverty rates for 2009 for all districts and communes and detailed poverty data compiled and processed by the ID Poor project for those that have been covered by the project.

## The future

It is our sincere hope that this is the start of a longer-term process. We hope that a next edition of these Provincial Data Books will offer more comprehensive, and up-to-date information. We hope that the Provincial Administrations will not only start using this information, but also improve and update it. For this they are all provided with the full data set in digital format.

We invite agencies, projects and experts to send reports, statistics and maps that could be used for a next version to us and we invite all users of the Provincial Data Books to inform us about errors, updates and inconsistencies. Please contact us through [info@ncdd.gov.kh](mailto:info@ncdd.gov.kh)

We now invite you to browse through this data book. You may open this randomly or use the table of contents and go to the aspects that have your special interest.

We hope that you will be informed, surprised and assisted. We hope, above all, that this information will lead to a deeper understanding of causes and effects of poverty, to purposeful decisions on how to tackle those causes and to greater transparency in using scarce resources for the benefit of all.

# SECTION A: MAPS





















## 4. Land area and distance

### 4.1. Land area by district, mid 2009

District	Total Land Area (ha)	Forest Land Area (ha)		Cultivation Land Area (ha)	Construction Land Area (ha)	Other Land Area (ha)
		Total	Flooded Forest Area			
Anlong Veang	153,319	94,672	-	40,200	12,671	5,776
Banteay Ampil	134,210	83,031	-	37,367	3,860	9,952
Chong Kal	9,728	5,347	-	2,755	1,295	331
Samraong	152,500	129,672	-	16,323	6,388	117
Trapeang Prasat	184,195	32,652	-	145,205	5,671	667
<b>Total</b>	<b>633,952</b>	<b>345,374</b>	<b>-</b>	<b>241,850</b>	<b>29,885</b>	<b>16,843</b>

Source: District Information System, DoLA

### 4.2. Land used area by category, 2006

Land Type	Area in Ha
Urban Settlement	606.89
Village Settlement	2,306.72
Airfield	28.50
Wet season rice	60,484.64
Flooded Rice	484.57
Cropland	440.47
Rubber Plantation	0.04
Swidden	24,897.94
Dry Evergreen broad leafed forest (NE)	129,283.72
Deciduous forest	255,376.95
Dry Deciduous (Open) forest	7,937.31
Mixed forest (evergreen and deciduous)	80,898.88
Riparian forest	17,491.21
Secondary forest	31,100.32
Grassland	1,824.30
Abandoned field covered by grass	10,012.86
Flooded Grass	306.19
Shrubland	982.88
Abandoned field covered by shrub	29,908.65
Shrubland and scattered trees	5,907.20
Lake	611.92
Reservoir	1,047.05
River	246.77
Marsh	865.21
Rock outcrop	117.46

Source: GIS data, Land Used 2006, MLMUPC

### 4.3. Distances between District Center and Provincial Town

District	Distance in Km
Anlong Veang	85
Banteay Ampil	30
Chong Kal	30
Samraong	1
Trapeang Prasat	128

Source: Provincial Administration



## **SECTION B: PROVINCIAL PROFILE<sup>1</sup>**

---

<sup>1</sup> All data in this section come from the Commune Database (CDB) unless otherwise specified. These include primarily new CDB data, collected late 2008, and some data from earlier years.





## 5. General Information

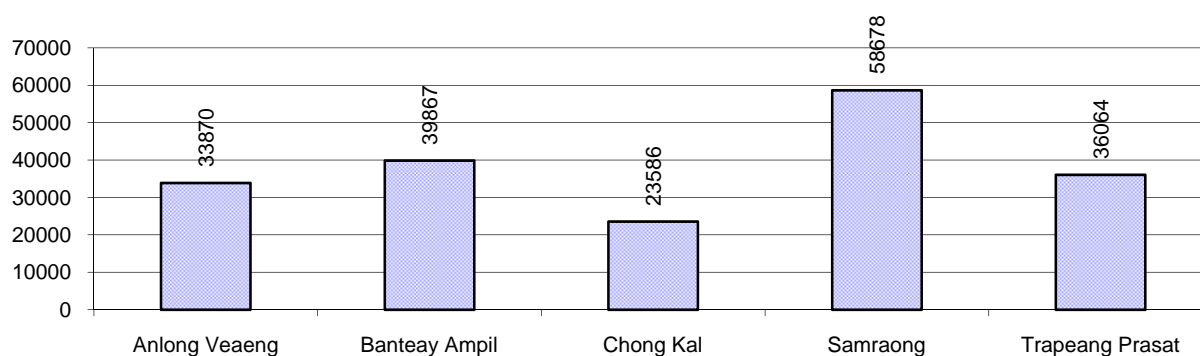
### 5.1. Population of the Province

#### 5.1.1 Total Population

Number of families	2005	2006	2007	2008
Total number of families	30,244 families	33,133 families	36,294 families	40,836 families
Increase (+)/Decrease (-) in nr of families		10%	10%	13%
Total population	147,913 pers	160,196 pers	173,866 pers	192,065 pers
Increase (+)/Decrease (-) in nr of people		8%	9%	10%
Number of female Headed Households (HH)	5,206 families	6,626 families	5,641 families	5,982 families

**Note:** Percentages of population and increase/decrease are calculated on basis of the previous year. A negative sign in front of the percentage indicates a decrease in population.

#### 5.1.2 Population, by District, in 2008



#### 5.1.3 Population, by Age Group, 2006-2008

Population by age group	2006	2007	2008	
	%	%	%	Number
<b>Age 0-5 years (as percentage of the population)</b>	15%	15%	14%	27,846 persons
Male 0-5 yrs	51%	55%	52%	14,385 persons
Female 0-5 yrs	49%	45%	48%	13,461 persons
<b>Age 6-17 (as percentage of the population)</b>	33%	32%	31%	59,566 persons
Male 6-17 yrs	51%	52%	52%	30,976 persons
Female 6-17 yrs	49%	48%	48%	28,590 persons
<b>Age 18-60 (as percentage of the population)</b>	49%	50%	51%	98,912 persons
Male 18-60 yrs	50%	50%	49%	48,882 persons
Female 18-60 yrs	50%	50%	51%	50,030 persons
<b>Age 61 above (as percentage of the population)</b>	3%	3%	3%	5,741 persons
Male 61	45%	46%	46%	2,635 persons
Female 61	55%	54%	54%	3,106 persons

**Note:** The overall percentage for each age group is calculated on the basis of the total population. The gender distribution of each group is calculated on the basis of the population within that particular age group.

## 5.2 Occupations

### 5.2.1 Percentage of families with a particular Occupation, 2006-2008

This table shows the percentage of the population who have a particular occupation (job), for example the percentage of the population in the district who are rice farmers, furniture crafter, trader, etc.

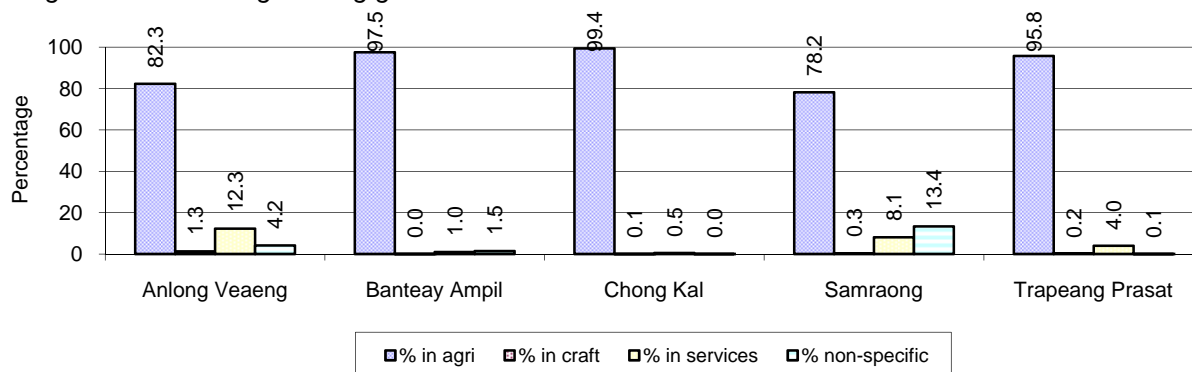
Description	2006	2007	2008	
	%	%	%	Number
<b>Families whose main occupation is agriculture</b>	88%	86%	89%	36,308 Families
Families whose primary occupation is rice farming	85%	83%	86%	35,020 Families
Families whose primary occupation is cultivating long-term crops	1%	1%	1%	231 Families
Families whose primary occupation is cultivating short-term crops	1%	1%	1%	346 Families
Families whose primary occupation is cultivating vegetable	0%	0%	0%	182 Families
Families whose primary occupation is fisherman	0%	0%	0%	43 Families
Families whose primary occupation is livestock farmer	0%	1%	0%	44 Families
Families whose primary occupation is NTFP collection	0%	0%	1%	442 Families
<b>Families whose main occupation is craft work</b>	0%	0%	0%	155 Families
Families, whose main occupation is in furniture craft, wooden, rattan, vine, bamboo	0%	0%	0%	77 Families
Families whose main occupation is in metal, aluminum, glass goods production	0%	0%	0%	18 Families
Families whose main occupation is food production	0%	0%	0%	7 Families
Families whose main occupation is tire, plastics and rubber goods production	0%	0%	0%	0 Families
Families whose main occupation is textile, clothing goods production	0%	0%	0%	1 Families
Families whose main occupation is in other production, not listed above	0%	0%	0%	52 Families
<b>Families whose main occupation is services</b>	4%	6%	6%	2,323 Families
Families whose main occupation is trade	3%	3%	3%	1,386 Families
Families whose main occupation is repair	0%	0%	1%	233 Families
Families whose main occupation is providing transport services	0%	0%	0%	93 Families
Families whose main occupation is providing other services	1%	2%	1%	611 Families
<b>Families whose main occupation is not clear (or multi)</b>	7%	8%	5%	2,050 Families

**Note:** The occupation percentages are calculated on the basis of the total number of families.



### 5.2.2 Percentage Families that work in one of four occupational sectors, by District in 2008

This table indicates the percentage of families involved in one of four occupation types: agriculture, craft, services or non-specific (other). Please note agriculture includes forestry activities such as cutting down trees and gathering gum from the trees.



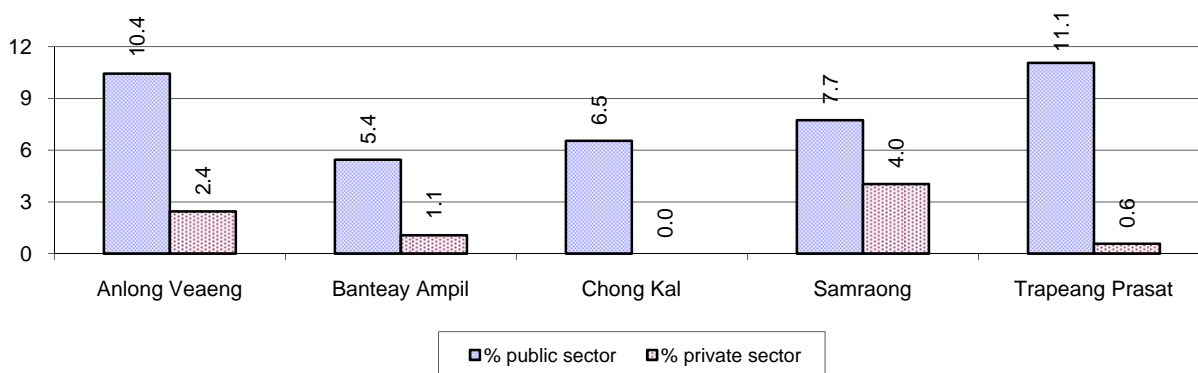
Note: Calculated on the basis of the total number of families within a province.

### 5.2.3 Percentage of Families with public Sector, private Sector or uncertain Jobs, 2006-2008

Description	2006	2007	2008	
	%	%	%	Number
Families that have a family member who is a government official, staff or worker	8%	7%	8%	3,367 families
Families that have a family member who is a private sector staff or worker	2%	1%	2%	806 families
Number of people aged 18-60 with uncertain/irregular jobs	8%	8%	14%	13,949 persons

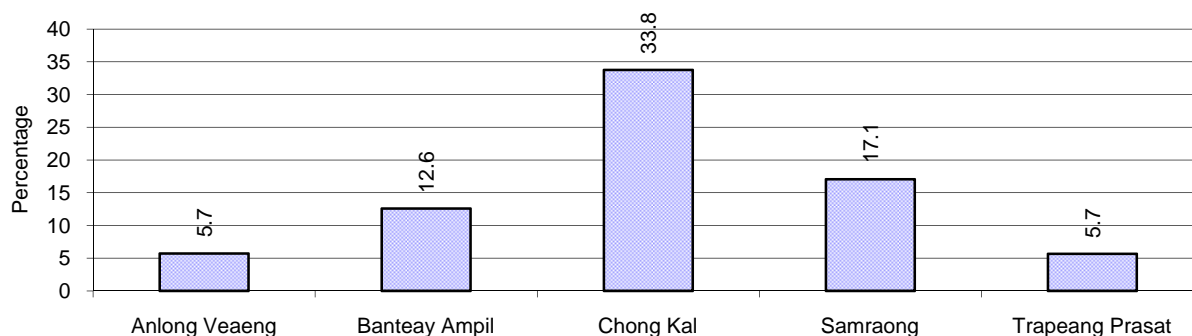
Note: In the first two rows percentages are calculated on the basis of the total number of families. In the third row the percentage is calculated on the basis of the total number of people aged 18-60 years.

### 5.2.4 Percentage of Families with public or private Sector Jobs, by District in 2008



Note: Calculated on the basis of the total number of families in the district

### 5.2.5 Percentage of People aged 18-60 years with uncertain/irregular Jobs, by District, in 2008.



## 5.3 Property

### 5.3.1 Housing types and facilities, 2006-2008

This table shows the percentage of people living in a certain type of house. It also indicates how many houses have electricity or battery powered lights and how many have TV.

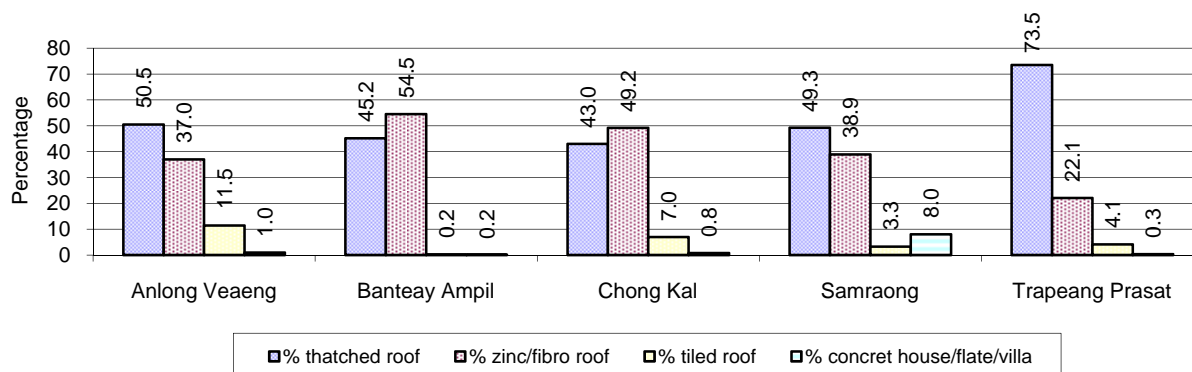
House Type	2006	2007	2008	
	%	%	%	Number
House with thatched roof	57 %	54 %	52 %	20,325 houses
House with zinc/fibro roof	38 %	41 %	40 %	15,392 houses
House with tiled roof	3 %	3 %	5 %	1,809 houses
Flats/apartments (with many families living)	1 %	1 %	1 %	480 houses
Concrete house or flat (with one family living)	0 %	1 %	2 %	699 houses
Villa house	0 %	0 %	0 %	11 houses
Houses with electricity	9 %	13 %	15 %	5,811 houses
Houses with battery light	35 %	42 %	42 %	16,422 houses
Houses with TV	28 %	31 %	35 %	13,627 houses

**Note:** Calculated against the total number of houses

### 5.3.2 Families living on public Land or without a permanent House

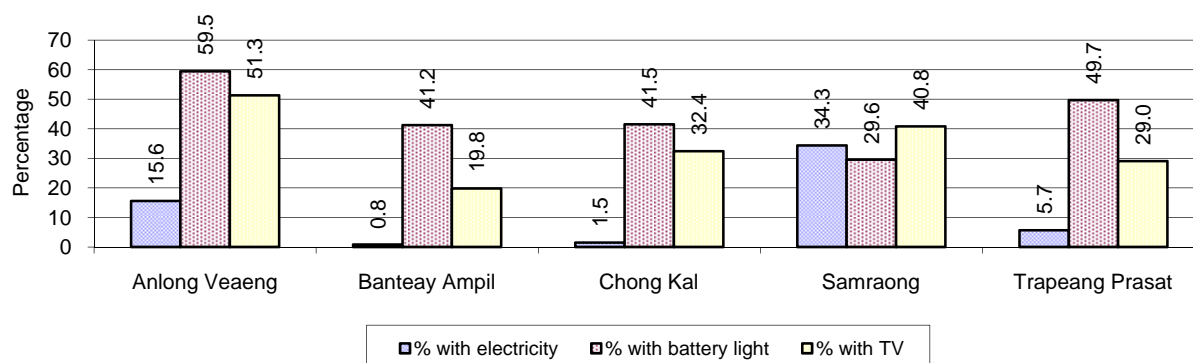
Living situation	2006	2007	2008
Families living in a house on public land	327 families	789 families	431 families
People, without permanent housing	109 person(s)	112 person(s)	149 person(s)

### 5.3.3 Percentage of Population living in a particular type of House, by District, in 2008



**Note:** Calculated against the total number of houses in each district

### 5.3.4 Percentage of Houses with Electricity, Battery Lights and/or TVs, by District, in 2008



**Note:** Calculated against the total number of houses in each district

### 5.3.5 Types of Vehicles and their ratio to Families, 2006-2008

This table shows the number of families per vehicle in the province. The last column shows the total number of each type of vehicle in the province for 2008.

Description	2006 ratio	2007 ratio	2008	
			Ratio	Number
Bicycle and bicycle with trailer	2	2	2	18,000
Ox-carts and horse-carts	4	6	8	4,977
Motorbike/with trailer	4	3	3	15,190
Motor tri-cycle	187	9,074	393	104
<b>Large Transportation</b>				
<b>Total number of cars/trucks</b>	45	47	35	1,175
Locally made vehicles	235	230	183	223
Trucks for goods transport	183	160	141	289
Buses/mini buses for passengers	895	2,592	928	44
Family cars	87	95	66	619
<b>Agriculture machinery</b>				
Tractors used for plowing	534	437	298	137
Power-tillage used for plowing	7	5	5	8,445
<b>Other type of machinery</b>				
Other type of machinery	1,035	363	742	55
<b>Water transportation</b>				
Row boats	108	144	137	298
<b>Total number of motor boats</b>	11,044	36,294	396	103
Motor boats used for fishing	33,133	N/A	400	102
Motor boats used for passengers	33,133	36,294	N/A	0
Motor boats used for goods transporting	33,133	N/A	40,836	1

**Note:** Ratio of families to a particular type of vehicle is the result of the total number of families divided by total number of that type of vehicle. Other types of vehicles, such as bulldozer, excavator, rollers etc. are not listed.

## 6 Infrastructure and Economy

### 6.1 Roads in meters, 2006-2008

Description	2006	2007	2008
Bituminous road	27,287 m	10,200 m	4,800 m
DBST, Macadam road	4,200 m	4,200 m	16,200 m
Concrete road	0 m	0 m	0 m
Laterite road	111,109 m	102,405 m	89,510 m
Constructed earth road	104,103 m	71,769 m	98,268 m
Un-constructed earth road	113,994 m	88,720 m	63,323 m

### 6.2 Sewerage Pipes in meters, 2006-2008

Description	Sewerage pipe length		
	2006	2007	2008
Total length of sewage pipe, diameter 30-50 cm	5 m	5 m	23 m
Length of newly constructed sewage pipe, diameter 30-50 cm	5 m	35 m	0 m
Length of sewage pipe, diameter 30-50 cm needs repair/rehabilitation	5 m	0 m	0 m
Total length of sewage pipe, diameter of pipe 60-100 cm	474 m	414 m	659 m
Length of newly constructed sewage pipe, diameter 60-100 cm	193 m	240 m	32 m
Length of sewage pipe, diameter 60-100 cm needs repair/rehabilitation	37 m	36 m	21 m
Sewerage pipe, diameter of pipe over 100 cm	17 m	32 m	30 m
Length of newly constructed sewage pipe, diameter over 100 cm	58 m	0 m	0 m
Length of sewage pipe, diameter over 100 cm needs repair/rehabilitation	3 m	2 m	0 m

### 6.3 Drainage and Bridges

Construction Type	2006		2007		2008	
	place(s)	Length	place(s)	Length	place(s)	Length
Single pipe culvert	139	607m	151	385 m	108	594 m
Double-pipe culvert	45	181m	71	97 m	52	360 m
Box pipe culvert	19	72m	15	92m	11	110 m
Wooden bridge	60	574m	30	313m	19	330 m
Concrete bridge	32	286m	25	352m	14	271 m
Bale bridge	1	10m	0	0m	0	0 m
Spillway construction	9	125m	11	96m	8	110 m

## 6.4 Services in the Province

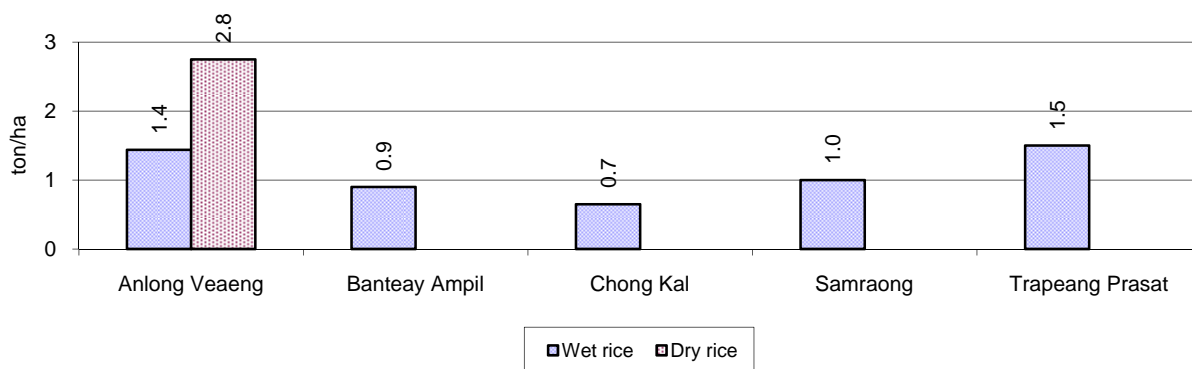
Descriptions	Number of places by year		
	2006	2007	2008
<b>Public</b>			
Electricity generating stations	5	27	27
Health clinics	10	25	44
<b>Private</b>			
Bicycle and motorcycle repair places	114	138	710
Agricultural machinery, tools and equipment repair places	32	39	57
Electronic tool repair places	14	13	16
Battery-charging services	166	182	206
Handicraft places, wooden furniture and forest by-products	56	60	60
Other handicraft places (excluding furniture)	15	5	12
Small-scale services (hairdresser, phone service, massage, Karaoke, etc)	97	154	138
Small-scale food shop businesses (Food, groceries, drink shop, etc)	80	92	118
Small-scale rice mills	429	409	581
Medium or large-scale rice mills	95	92	164
Small-scale markets	14	14	12
Large-scale market	2	3	5
Alcohol refinery places	22	55	39
Pharmacies and small drug stores	27	21	20
Hotels	5	4	2
Guest houses	23	23	24
Restaurants	9	22	16
Gasoline stations	14	20	13

## 6.5 Agriculture

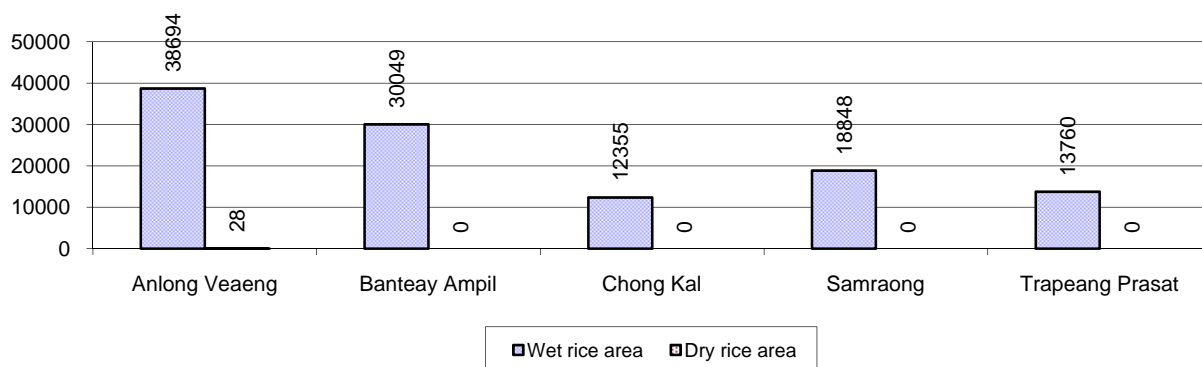
### 6.5.1 Rice cultivation in the Province, 2006-2008

Description	2006	2007	2008
Total dry rice land area	72 ha	400 ha	140 ha
Actual dry rice cultivation area	22 ha	35 ha	28 ha
% actual cultivation to total land	31%	9%	20%
Total dry rice production	44 tonne(s)	70 tonne(s)	77 tonne(s)
Average dry rice yield	2.0 tonne(s)/ha	2.0 tonne(s)/ha	2.8 tonne(s)/ha
<b>Wet Rice</b>			
Total wet rice land area	345,328 ha	97,092 ha	139,050 ha
Actual wet rice cultivation area	83,725 ha	60,081 ha	113,706 ha
% actual cultivation to total land	24 %	62%	82%
Total wet rice production	128,250.71 tonne(s)	72,743.83 tonne(s)	130,445.11 tonne(s)
Average wet rice yield	1.5 tonne(s)/ha	1.2 tonne(s)/ha	1.1 tonne(s)/ha
<b>Intensive Rice</b>			
Total intensive rice land area	0 ha	0 ha	3,060 ha
Actual intensive rice cultivation area	- ha	- ha	- ha
Average intensive rice yield	- tonne(s)/ha	- tonne(s)/ha	- tonne(s)/ha
<b>Upland Rice</b>			
Actual upland rice cultivation area	6,239 ha	9,391 ha	19,475 ha
Total upland rice production	9,319 tonne(s)	11,134 tonne(s)	25,706 tonne(s)
Average upland rice yield	1.5 tonne(s)/ha	1.2 tonne(s)/ha	1.3 tonne(s)/ha

### 6.5.2 Estimated wet and dry Season Rice Yield in tonne(s)/Ha, by District, in 2008



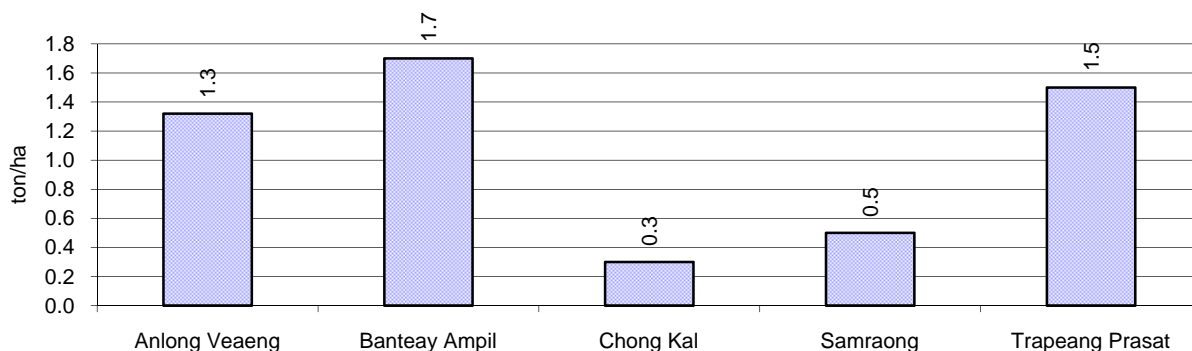
### 6.5.3 Cultivated wet and dry Season Rice areas in Ha, by District, in 2008



### 6.5.4 Estimated intensive Rice Yields in tonnes/Ha, by District, for 2008

There was no intensive rice cultivated in this province in 2008

### 6.5.5 Estimated upland Rice Yield in tonnes/Ha, by District, for 2008

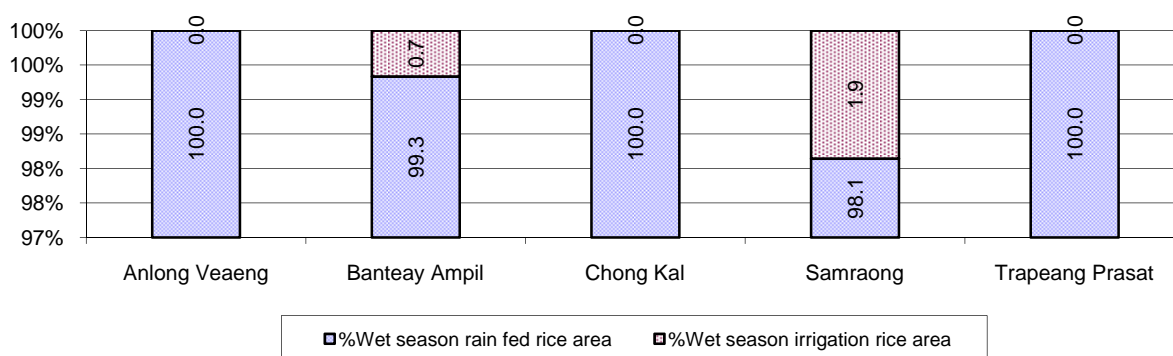


### 6.5.6 Wet season Rice irrigation, 2006-2008

Description		2006 %	2007 %	2008	
				%	Number
Total area of wet season rain fed rice land		100%	100%	100 %	113,156 ha
Percentage of wet season rice land that is irrigated; and for 2008 area in Ha		0 %	0 %	0 %	550 ha
Where	Area irrigated from canal/dam	100 %	100 %	64 %	350 ha
	Area irrigated from river, stream, lake, natural pond	0 %	0 %	36 %	200 ha
	Area irrigated from drilled well	0 %	0 %	0 %	0 ha
	Area irrigated from dug pond	0 %	0 %	0 %	0 ha

### 6.5.7 Water sources for wet Season Rice Cultivation, by District, in 2008

This chart shows the percentage of wet season rice cultivation receiving water from rain (natural) and from irrigation.



### 6.5.8 Access to Irrigation

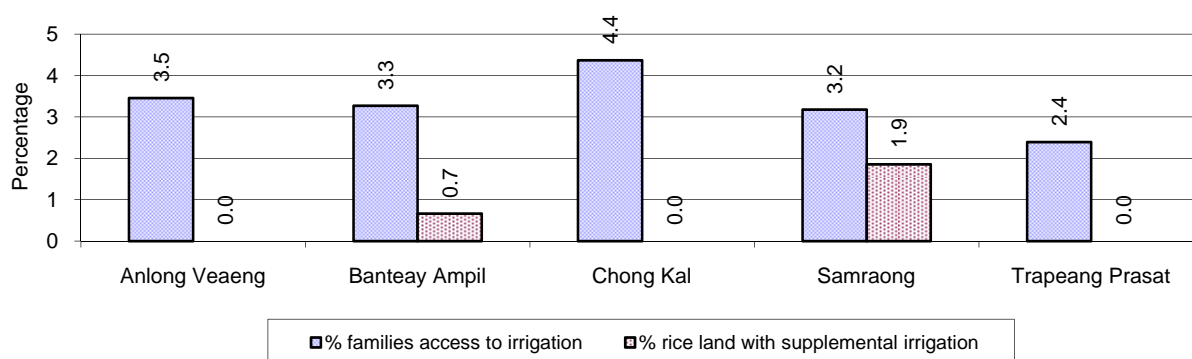
Description	2006 %	2007 %	2008	
			%	Number
Families who have access to irrigation water	3%	5%	3%	1,133 families
Families who have irrigation wells	1%	1%	1%	345 families

Note: Calculated against the total number of families are rice farmers

### 6.5.9 Number of Irrigation Wells, 2006-2008

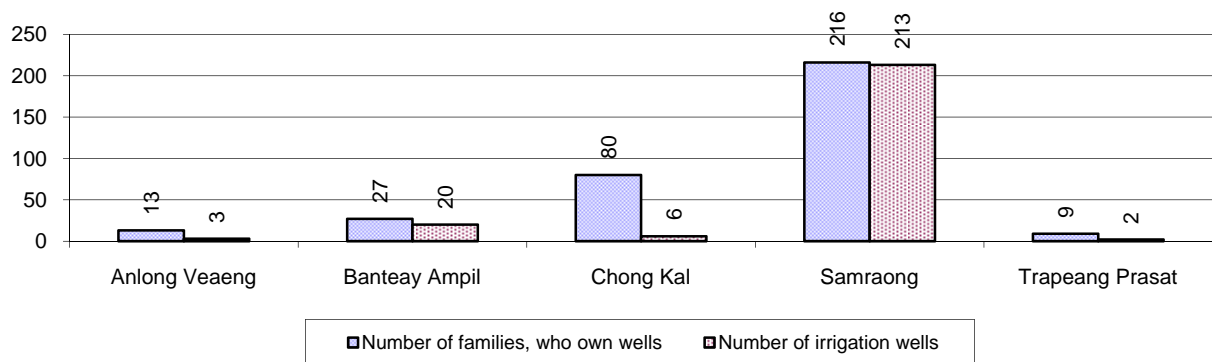
Description	2006	2007	2008
Number of irrigation wells	80 wells	102 wells	244 wells

### 6.5.10 Percentage of Families with access to (supplemental) Irrigation for wet Season Rice cultivation, by District, in 2008



Note: % of families, with access to irrigation is calculated against the total number of families, whose main occupation is rice farming. Irrigated wet rice land area is calculated against the total actual wet rice land cultivated areas

### 6.5.11 Irrigation Wells, by District, in 2008

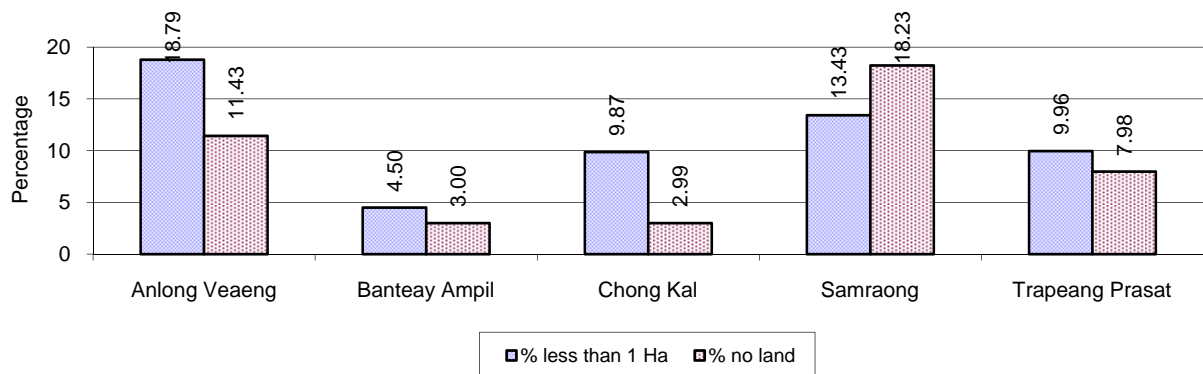


### 6.5.12 Farmers owning less than one hectare of Rice Land

Description	2006	2007	2008	
	%	%	%	Number
Families who have less than one hectare of rice land	12%	13%	11%	3,850 families
Families who do not own any rice land	8%	7%	9%	3,242 families

**Note:** Calculated on basis of total number of families who are rice farming

### 6.5.13 Percentage of Farmers with less than one Hectare or no Rice Land, by District, in 2008



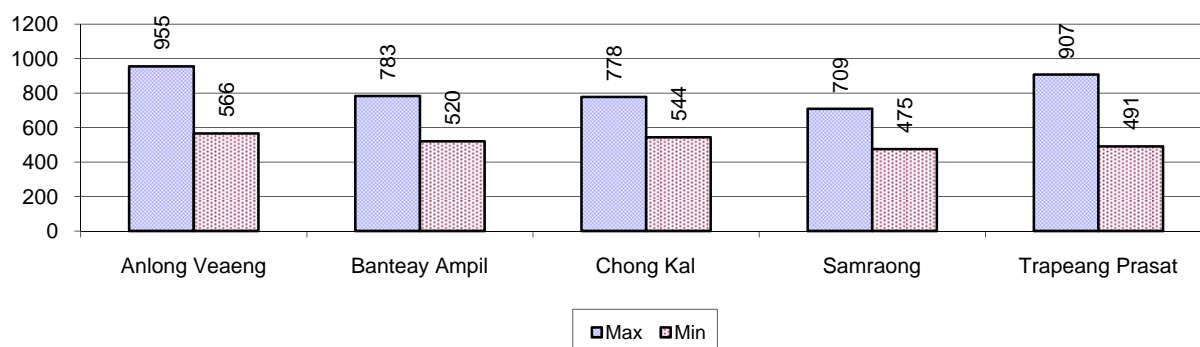
**Note:** Calculated on basis of total number of families who are rice farming

### 6.5.14 Average farm-gate Prices of Rice, 2006-2008

Description	2006	2007	2008
Maximum average farm gate price	506 Riels/Kg	776 Riels/Kg	833 Riels/Kg
Minimum average farm gate price	353 Riels/Kg	546 Riels/Kg	517 Riels/Kg
Average farm gate price	429 Riels/Kg	661 Riels/Kg	675 Riels/Kg
Average rice production per person	859 Kg/person	483 Kg/person	833 Kg/person

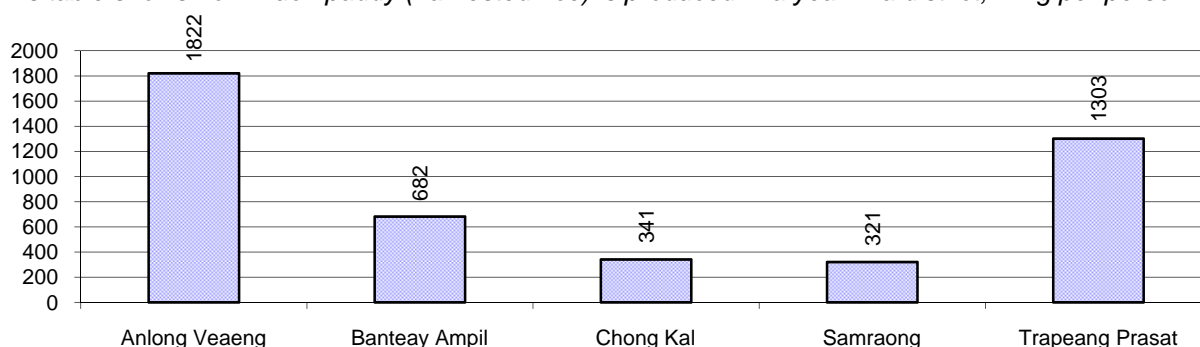


### 6.5.15 Minimum and maximum farm-gate Prices of Rice in Riel/kg, by District, in 2008



### 6.5.16 Production of Paddy in Kg/Person, by District, in 2008

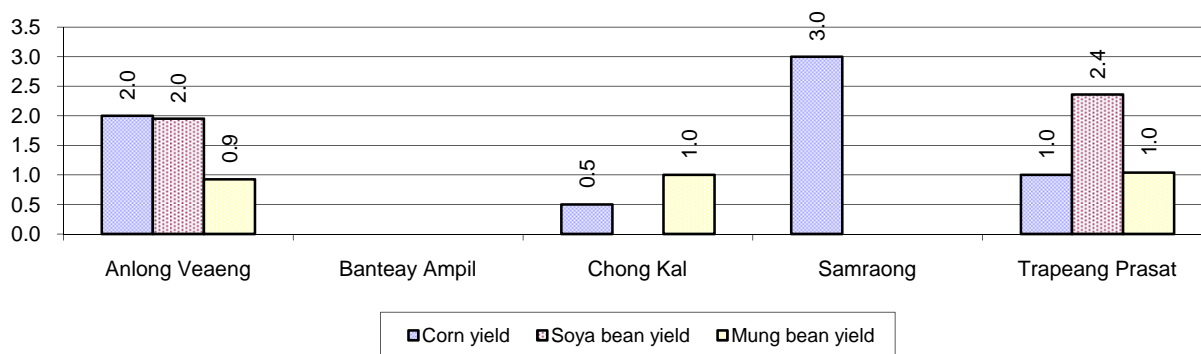
This table shows how much paddy (harvested rice) is produced in a year in a district, in kg per person.



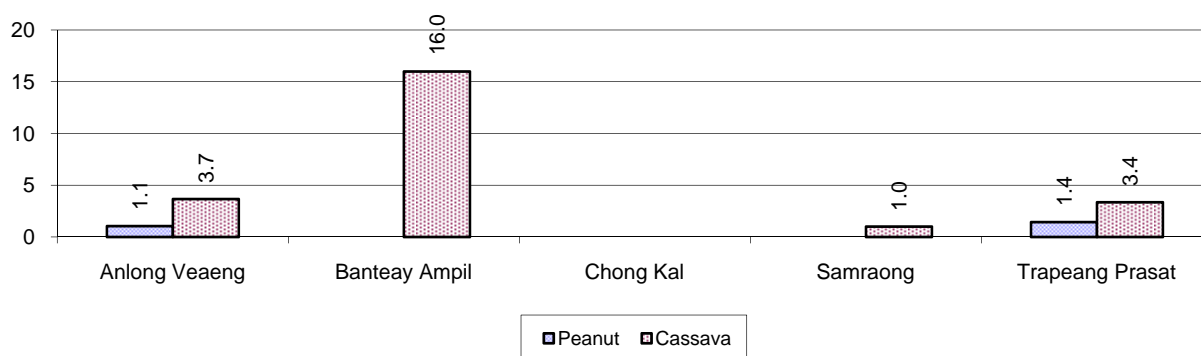
### 6.5.17 Production of other Crops, 2006-2008

Crops	2006	2007	2008
Corn cultivation area	22 ha	75 ha	379 ha
Estimated corn yield	0.9 tonne(s)/ha	1.6 tonne(s)/ha	1.4 tonne(s)/ha
Estimated corn production	21 tonne(s)	118 tonne(s)	526 tonne(s)
Soya bean cultivation area	205 ha	287 ha	700 ha
Estimated Soya bean yield	1.4 tonne(s)/ha	1.9 tonne(s)/ha	2.2 tonne(s)/ha
Estimated Soya bean production	293 tonne(s)	539 tonne(s)	1,569 tonne(s)
Mungbean cultivation area	73 ha	88 ha	111 ha
Estimated Mungbean yield	1.3 tonne(s)/ha	1.1 tonne(s)/ha	1.0 tonne(s)/ha
Estimated Mungbean production	94 tonne(s)	96 tonne(s)	112 tonne(s)
Peanut cultivation area	106 ha	120 ha	285 ha
Estimated Peanut yield	1.0 tonne(s)/ha	1.1 tonne(s)/ha	1.3 tonne(s)/ha
Estimated Peanut production	110 tonne(s)	128 tonne(s)	379 tonne(s)
Cassava cultivation area	274 ha	296 ha	378 ha
Estimated Cassava yield	11.4 tonne(s)/ha	10.7 tonne(s)/ha	6.4 tonne(s)/ha
Estimated Cassava production	3,124 tonne(s)	3,157 tonne(s)	2,416 tonne(s)
Sweet potatoes cultivation area	6 ha	8 ha	12 ha
Estimated Sweet potatoes yield	6.8 tonne(s)/ha	1.6 tonne(s)/ha	1.9 tonne(s)/ha
Estimated Sweet potatoes production	41 tonne(s)	13 tonne(s)	23 tonne(s)
Sesame cultivation area	187 ha	191 ha	408 ha
Estimated Sesame yield	0.9 tonne(s)/ha	1.2 tonne(s)/ha	0.9 tonne(s)/ha
Estimated Sesame production	167 tonne(s)	223 tonne(s)	371 tonne(s)

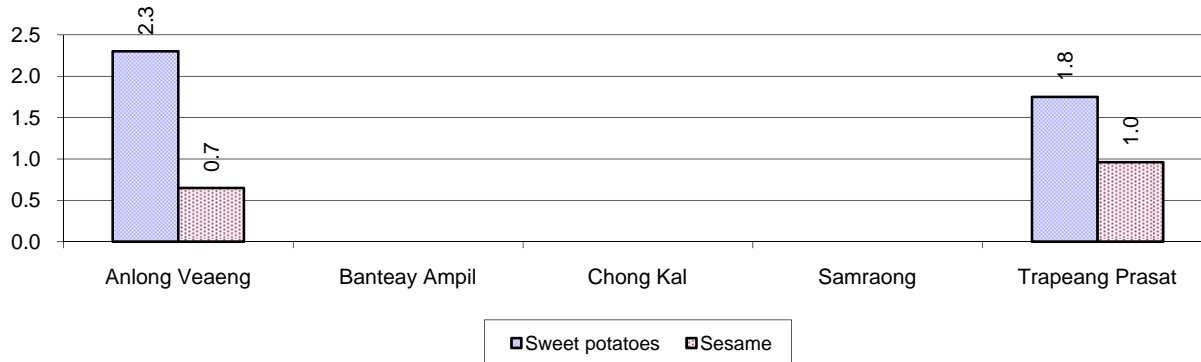
### 6.5.18 Yields of Corn, Soya beans and Mungbeans in tonne(s)/ha, by District, in 2008



### 6.5.19 Yields of Peanuts and Cassava in tonne(s)/ha by District, in 2008



### 6.5.20 Yields of Sweet Potatoes and Sesame in tonne(s)/ha, by District, in 2008



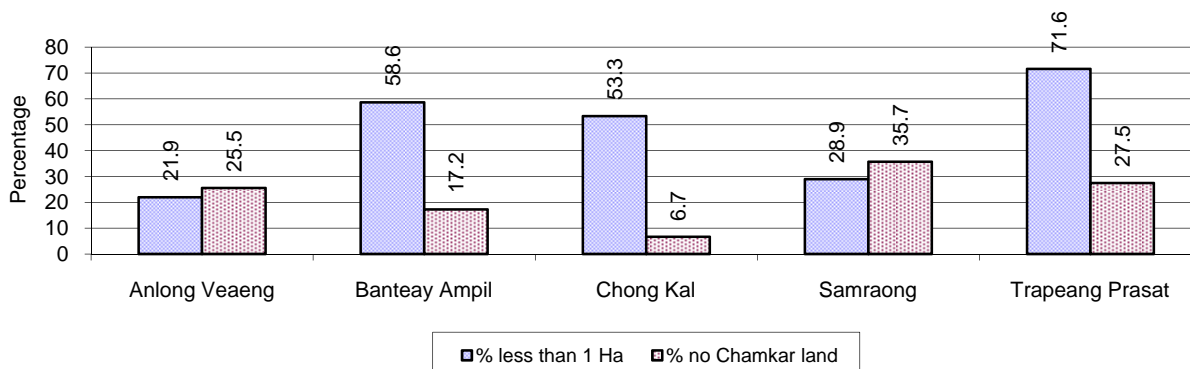
### 6.5.21 Percentage Farmers who own less than 1 Ha or no Chamkar land

Description	2006	2007	2008	
	%	%	%	Number
Families, who own less than 1ha of Chamkar land	27%	16%	37%	280 families
Families, with no Chamkar land	18%	5%	28%	211 families

**Note 1:** Calculated as a percentage of the total number of families whose main occupation is Chamkar (not rice) farming

**Note 2:** Chamkar land is no-rice land, i.e. other crops

### 6.5.22 Percentage Farmers owning less than 1 ha or no Chamkar land, by District, in 2008



**Note:** Percentage is calculated among families, who Chamkar farm as a main occupation, not the total population of the district.

### 6.5.23 Percentage of Families raising Cattle/Bufalo, 2006-2008

Description	2006	2007	2008	
	%	%	%	Number
Families raising cattle/buffalo	49%	44%	36%	14,680 families
Families raising cattle/buffalo as labor forces	29%	24%	16%	6,413 families

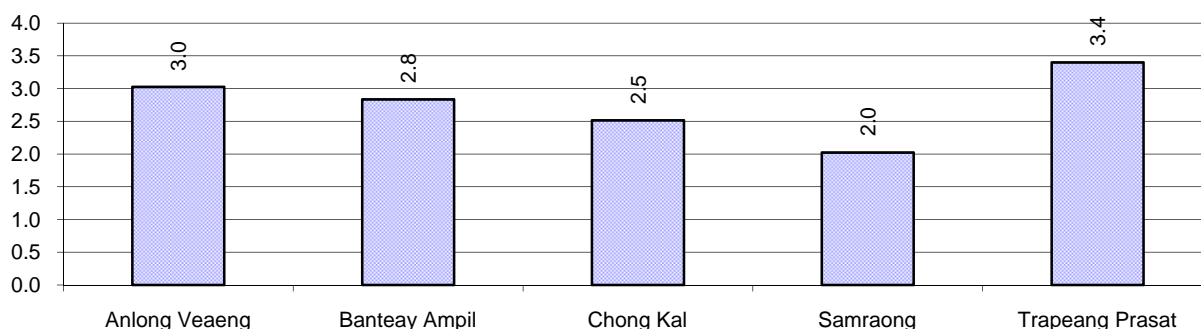
**Note:** Calculated against the total number of families.

### 6.5.24 Number of Cattle/buffalo being raised, 2006-2008

Description	2006	2007	2008
Total number of cattle/buffalo	42,244 head(s)	41,890 head(s)	39,557 head(s)
Average cattle/buffalo per families	2.6 head(s)/families	2.6 head(s)/families	3 head(s)/families

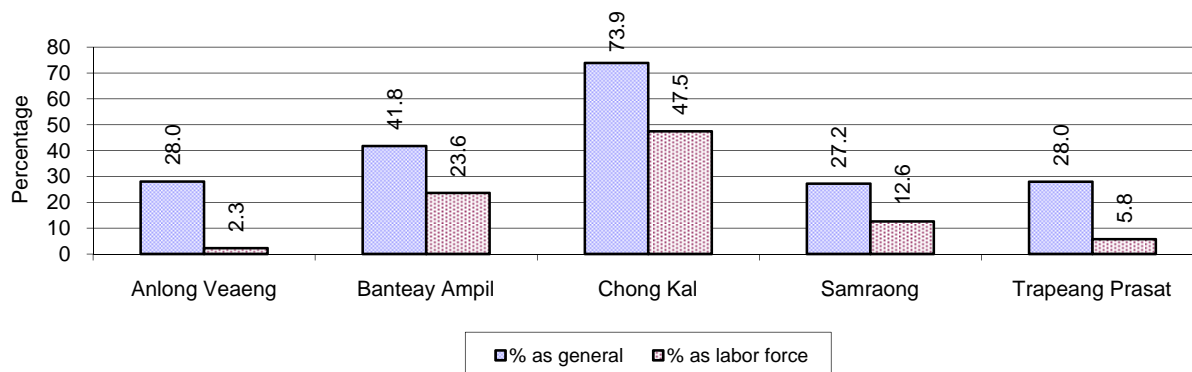
**Note:** Calculated by dividing total number of cattle/buffalo by total number of cattle/buffalo raising families

### 6.5.25 Average number of Cattle/Bufalo per Family, by District, in 2008



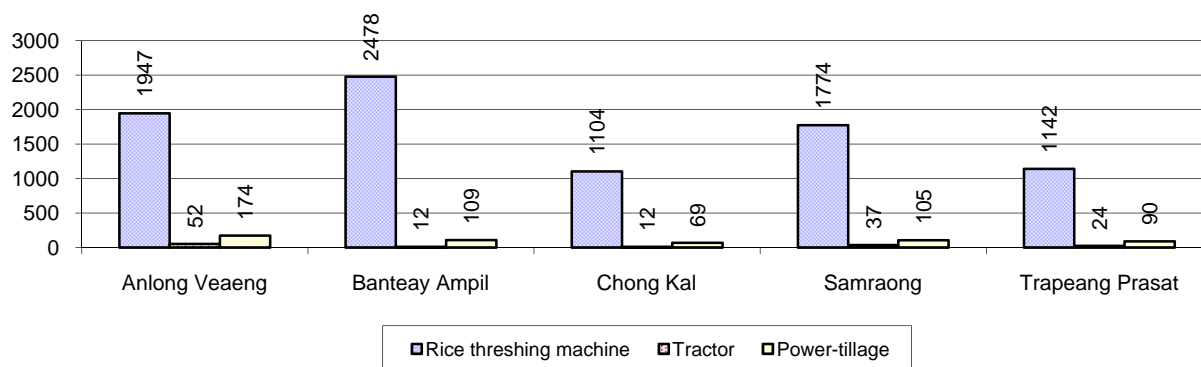
**Note:** Calculated by dividing total number of cattle/buffalo by total number of cattle/buffalo raising families

### 6.5.26 Percentage Families raising Cattle/Buffalo, for general and labor purposes in 2008, by Commune



**Note:** Calculated using the total number of families raising cattle/buffalo against the total number of families.

### 6.5.27 Type and number of agricultural Machines, by District, in 2008

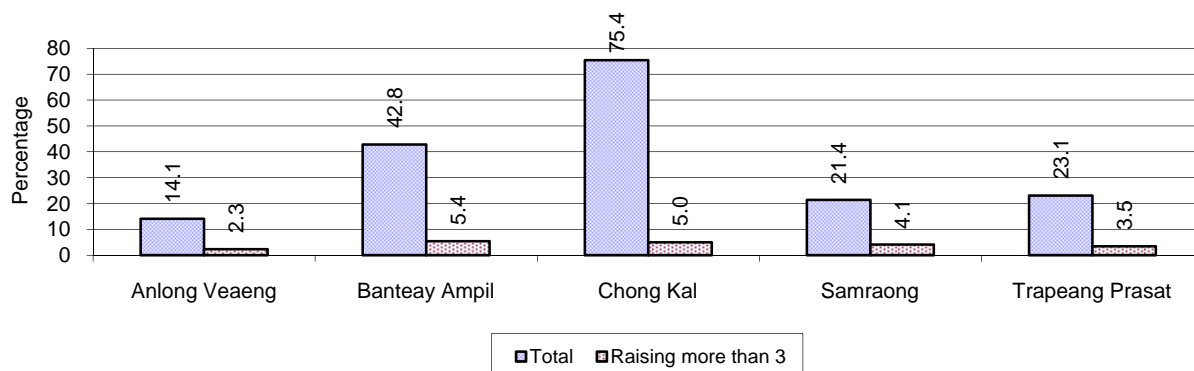


### 6.5.28 Livestock-producing Households, 2006-2008

Description	2006	2007	2008	
	%	%	%	Number
Total number of families raising pigs	41%	36%	31%	12,706 families
number of families raising more than 3 pigs	6%	5%	4%	1,647 families
Total number of families raising chickens	79%	78%	78%	31,729 families
number of families raising more than 3 chickens	57%	60%	58%	23,495 families
Total number of families raising ducks	15%	13%	12%	4,710 families
number of families raising more than 5 ducks	11%	11%	9%	3,492 families
Total number of families raising goats or sheep	0%	0%	0%	36 families
Total number of families raising horses	0%	0%	0%	9 families

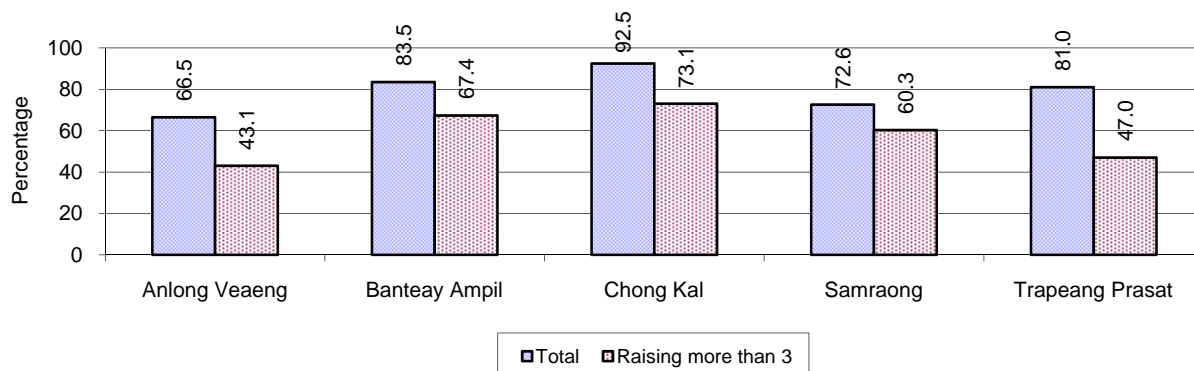
**Note:** Calculated against the total number of families

### 6.5.29 Percentage Families raising Pigs, by District, in 2008



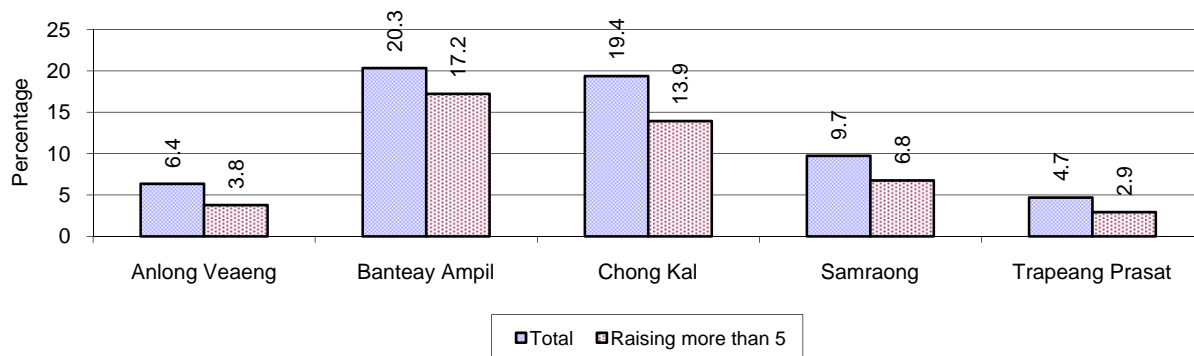
**Note:** Calculated against the total number of families in the district

### 6.5.30 Percentage Families raising Chickens, by District, in 2008



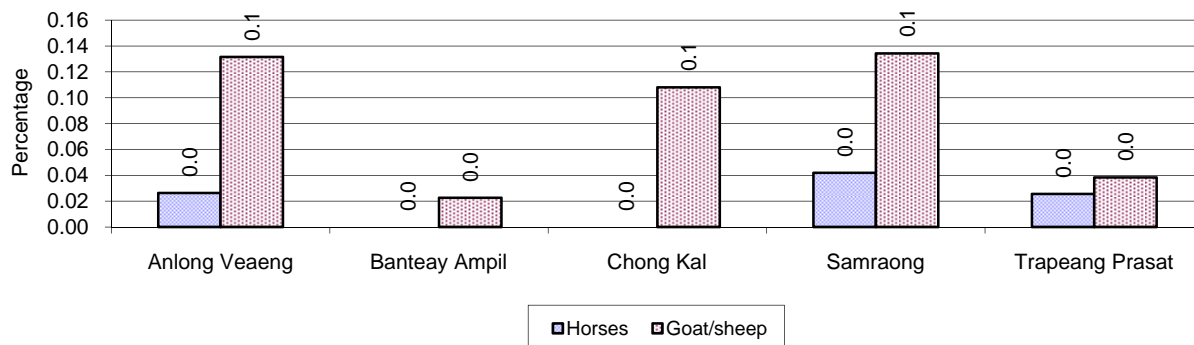
**Note:** Calculated against the total number of families in the district

### 6.5.31 Percentage Families raising Ducks, by District, in 2008



**Note:** Calculated against the total number of families in the district

### 6.5.32 Percentage Families raising Horses, Goats or Sheep, by District, in 2008

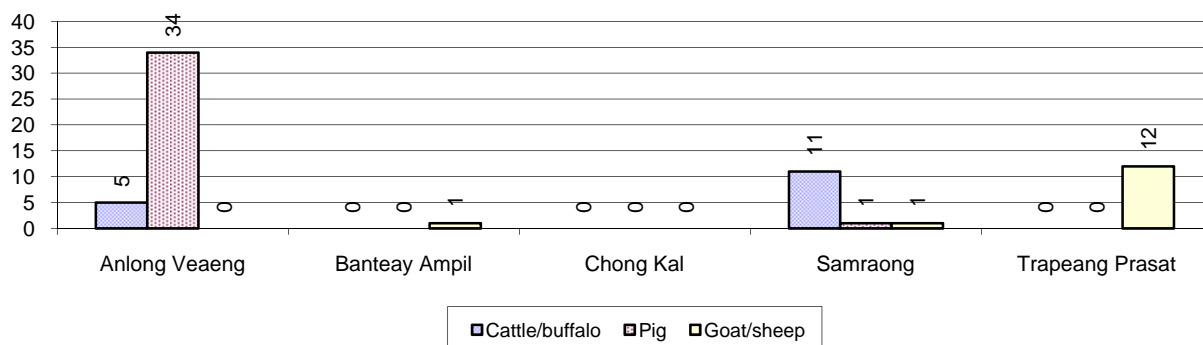


**Note:** Calculated against the total number of families in the district

### 6.5.33 Livestock Farms, 2006-2008

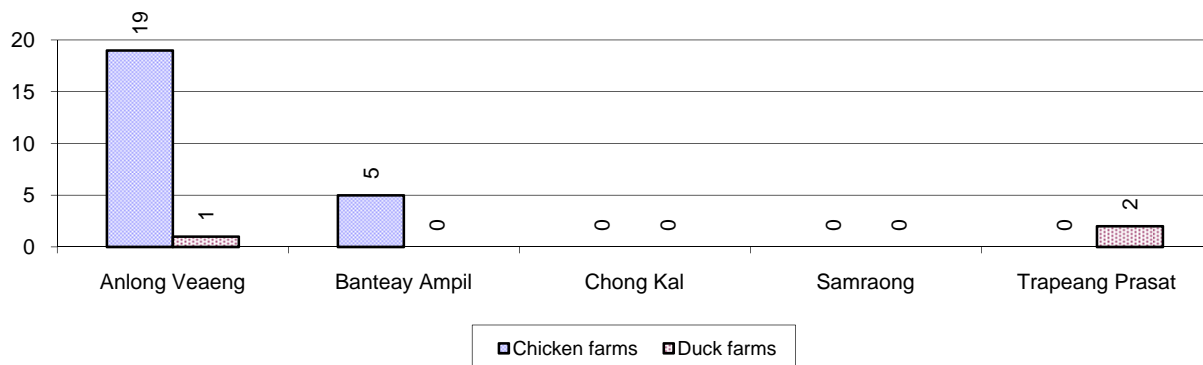
Description	2006	2007	2008
Number of cattle/buffalo farms	28 farm(s)	113 farm(s)	16 farm(s)
Number of pig farms	4 farm(s)	69 farm(s)	35 farm(s)
Number of goat/sheep farms	6 farm(s)	4 farm(s)	14 farm(s)
Number of chicken farms	7 farm(s)	4 farm(s)	24 farm(s)
Number of duck farms	1 farm(s)	10 farm(s)	3 farm(s)

### 6.5.34 Number Livestock Farms, by District in 2008



**Note:** Number of farms are recorded by the village chief, not by counting number of livestock in each farm

### 6.5.35 Number Chicken and Duck Farms, by District, for 2008



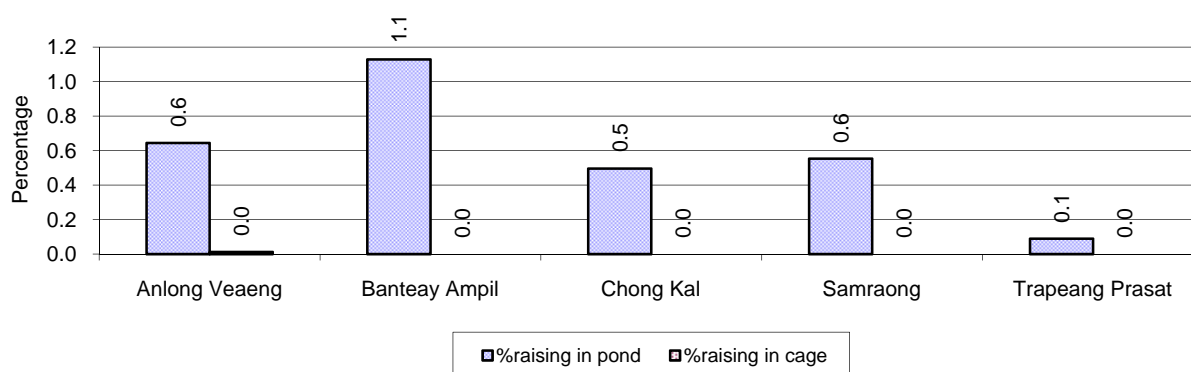
**Note:** Number of farm places recorded by village chief, not by counting number of livestock in each farm

### 6.5.36 Families raising Fish, 2006-2008

Description	2006	2007	2008
Total number of families raising fish	300 families	197 families	246 families
% families raising fish	1%	1%	1%
Number families raising fish in pond	296 families	196 families	245 families
% families raising fish in pond	1%	1%	1%
Number fish pond	342 pond(s)	212 pond(s)	259 pond(s)
No. of ponds per family	1.2 pond/families	1.1 pond/families	1.1 pond/families
Number of families raising fish in cage	4 families	1 families	1 families
%families raising fish in cage	0 %	0 %	0%
Number of fish cage	4 cage(s)	1 cage(s)	1 cage(s)
No. of fish cage per family	1.0 cage /families	1.0 cage /families	1.0 cage /families

**Note:** % of families raising fish or fish in ponds or cages is calculated a percentage of the total number of families.

### 6.5.37 Percentage of Families raising Fish, by District, in 2008



**Note:** Calculated as a percentage of the total number of families in the commune.

### 6.5.38 Shrimp and Prawn Farming, 2006-2008

Description	2006	2007	2008
Number of families raising shrimps	0 families	0 families	0 families
% Families raising shrimps	0%	0%	0%
Number of shrimp ponds	0 pond	0 pond	0 pond
Total area raising shrimps	0 ha	0 ha	0 ha
Area per family	-ha/families	-ha/families	-ha/families
Number of families raising prawns	0 families	0 families	0 families
% families raising prawns	0%	0%	0%
Number prawn ponds	0 pond	0 pond	0 pond
Ponds per families	- pond/families	-pond/families	-pond/families
Number of prawn cages	0 cage	0 cage	0 cage
Cages per families	0 cage /families	0 cage /families	0 cage /families

**Note:** Percentage of families raising either prawns or shrimp is calculated against the number of families, who do aquaculture farming, NOT the total population.

### 6.5.39 Numbers of Families raising Shrimps and number of Shrimp Ponds, by District, in 2008

There were no families raising shrimps in this province in 2008

### 6.5.40 Number of Families raising Prawn and Number of Prawn Ponds/Cages, by District, in 2008

There were no families raising prawn in this province in 2008



## 7 Social Aspects

### 7.1 Education

#### 7.1.1 Kindergarten in the Province, 2006-2008

Description	2006	2007	2008
Number of community kindergarten schools	99 school(s)	110 school(s)	99 school(s)
Number of community kindergarten class rooms	75 room(s)	97 room(s)	91 room(s)
Number of community kindergarten classes	81 class(es)	119 class(es)	113 class(es)
Number of community kindergarten teachers	121 person(s)	136 person(s)	123 person(s)
Number of women community kindergarten teachers	120 women	134 women	118 women
Number of state and private kindergarten schools	12 school(s)	17 school(s)	14 school(s)
Number of state and private kindergarten class rooms	13 room(s)	18 room(s)	20 room(s)
Number of state and private kindergarten classes	14 class(es)	18 class(es)	20 class(es)
Number of state and private kindergarten teachers	14 person(s)	24 person(s)	21 person(s)
Number of women state and private kindergarten teachers	14 women	24 women	20 women

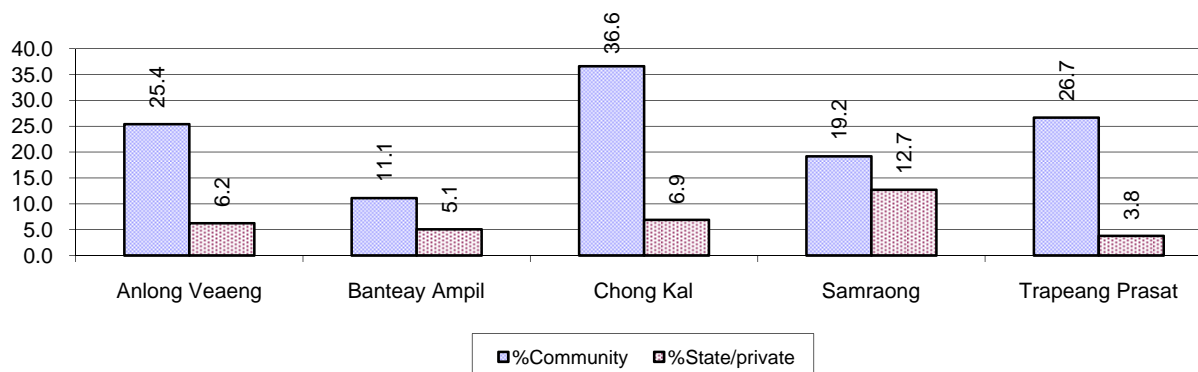
#### 7.1.2 Percentage enrolment at Kindergarten level, 2006-2008

This table shows the percentage of the total 3-5 year old population attending kindergarten.

Description	2006 %	2007 %	2008	
			%	Number
Total percentage of children, 3-5 yrs, go to kindergarten	26%	27%	30%	4,741 person(s)
Percentage of children, 3-5 yrs, go community kindergarten	21%	22%	22%	3,514 person(s)
Percentage children, 3-5 yrs, go state/private kindergarten	5%	5%	8%	1,227 person(s)

**Note:** Calculated against the total for that age group

#### 7.1.3 Percentage of Children 3-5 yrs attending Kindergarten, by District, in 2008



### 7.1.4 Basic Education, 2006-2008

#### Primary School

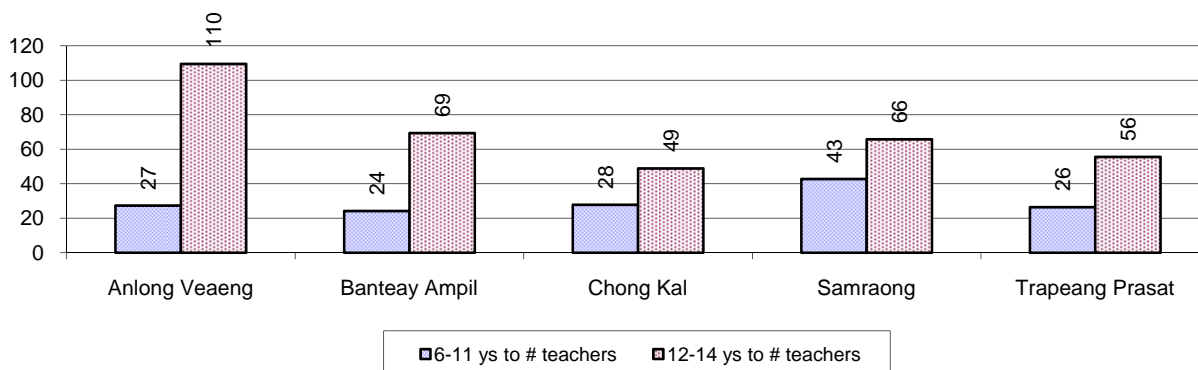
Description	2006	2007	2008
Number of primary schools	177 school(s)	191 school(s)	206 school(s)
Number of primary school rooms	705 room(s)	795 room(s)	831 room(s)
Number of primary classes	912 class(es)	1,023 class(es)	1,162 class(es)
Number of primary teachers	766 person(s)	770 person(s)	932 person(s)
Ratio of children 6-11 yrs to school	147	138	134
Ratio of children 6-11 yrs to school room	37	33	33
Ratio of children 6-11 yrs to class	28	26	24
Ratio of children 6-11 yrs to teacher	34	34	30

**Note:** According to education norm, children 6-11 yrs should attend primary school, while 12-14 yrs should be in lower secondary school, but in reality this varies.

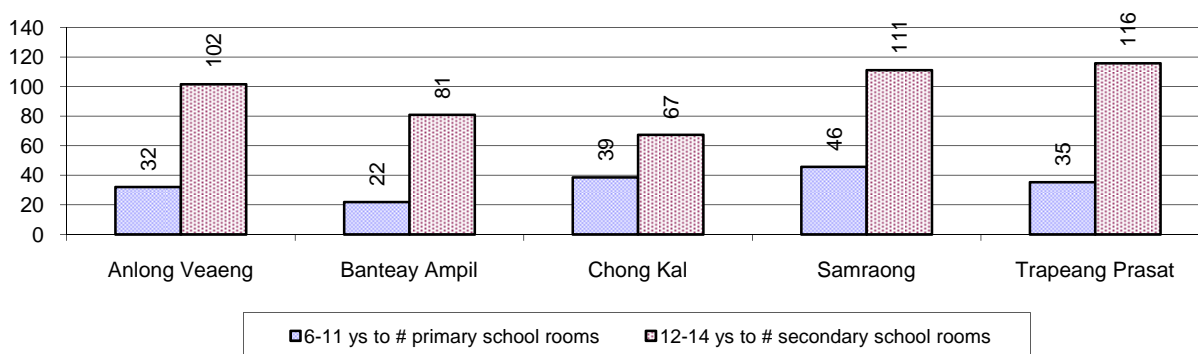
#### Lower Secondary School

Description	2006	2007	2008
Number of lower secondary schools	23 school(s)	28 school(s)	22 school(s)
Number of lower secondary school rooms	150 room(s)	151 room(s)	165 room(s)
Number of lower secondary classes	131 class(es)	165 class(es)	165 class(es)
Number of lower secondary teachers	174 person(s)	180 person(s)	236 person(s)
Ratio children 12-14 yrs to school	629	559	712
Ratio of children 12-14 yrs to school room	96	104	95
Ratio of children 12-14 yrs to class	110	95	95
Ratio of children 12-14 yrs to teacher	83	87	66

### 7.1.5 Ratio of 6-11 year old and 12-14 year old Children to number of Teachers, by District, in 2008



### 7.1.6 Ratio of 6-11 year old and 12-14 year old Children to number of School Rooms, by District, in 2008



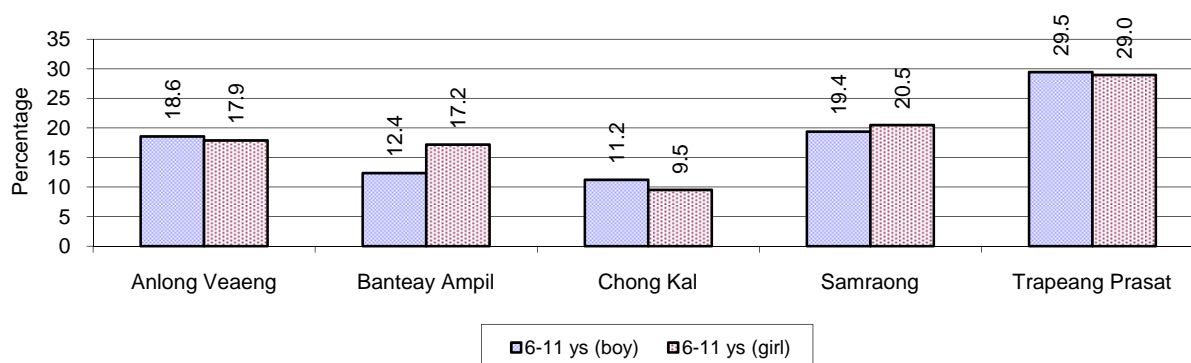
### 7.1.7 Enrolment status at Primary Level, 2006-2008 one decimal only

Description	2006 %	2007 %	2008	
			%	Number
Total children aged 6-11 years old	16%	15%	14%	27,617 person(s)
Total children aged 6-11 who are in school	77%	80%	81%	22,321 person(s)
Total children aged 6-11 who are not in school	23%	20%	19%	5,296 person(s)
<b>Total girls aged 6-11 years old</b>				
Total girls aged 6-11 years old	16%	15%	14%	13,381 person(s)
Total girls aged 6-11 who are in school	77%	80%	80%	10,753 person(s)
Total girls aged 6-11 who are not in school	23%	20%	20%	2,628 person(s)
<b>Total boys aged 6-11 years old</b>				
Total boys aged 6-11 years old	17%	16%	15%	14,236 person(s)
Total boys aged 6-11 who are in school	78%	81%	81%	11,568 person(s)
Total boys aged 6-11 who are not in school	22%	19%	19%	2,668 person(s)

**Note 1:** Percentage is calculated on the basis of the total number of children within 6-11 year age group for the first 3 rows and for the total girls and the total boys aged 6-11 yrs.

**Note 2:** Number of girls aged 6-11 who are in & not in school is calculated against the total number of girls aged 6-11 yrs. Number boys, 6-11 yrs who are in & not in school are calculated against the total number of boys aged 6-11 yrs.

### 7.1.8 Percentage of 6-11 year old Children not in School, by District, in 2008



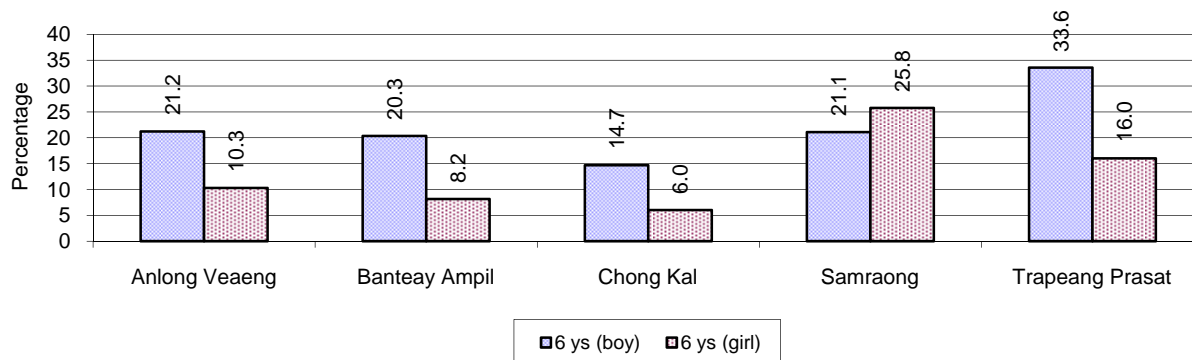
**Note:** calculated on the basis of the total number of children within 6-11 year age group in the commune.

### 7.1.9 Enrolment of 6 year old Children, 2006-2008

Description	2006 %	2007 %	2008	
			%	Number
Total % and number of children aged 6 years old	4%	3%	3%	6,360 person(s)
Total % of children aged 6 years old in school	72%	79%	78%	4,933 person(s)
Total % of children aged 6 years old not in school	28%	21%	22%	1,427 person(s)

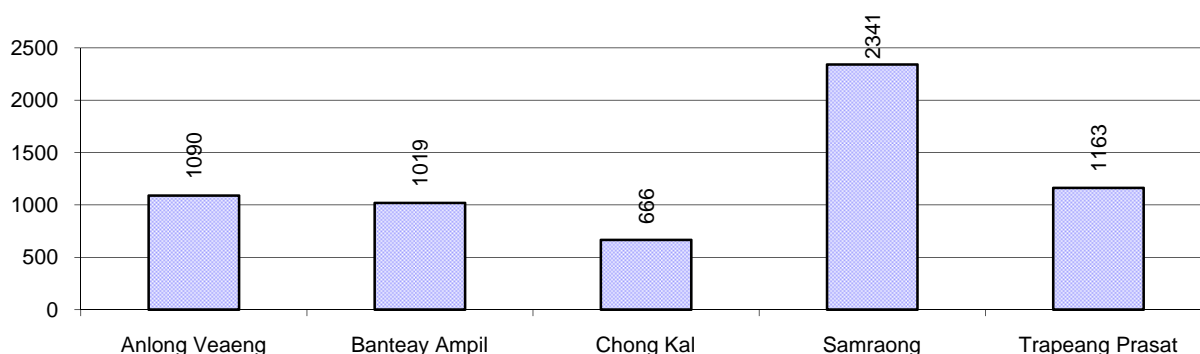
**Note:** First row calculated as a percentage of total population. Second and third row calculated as a percentage of the total number of 6 year olds.

### 7.1.10 Percentage of 6 year old Children not in School, by District, in 2008



**Note:** Calculated as a percentage of total 6 year old population

### 7.1.11 Number of 5 year old Children in each District in 2008

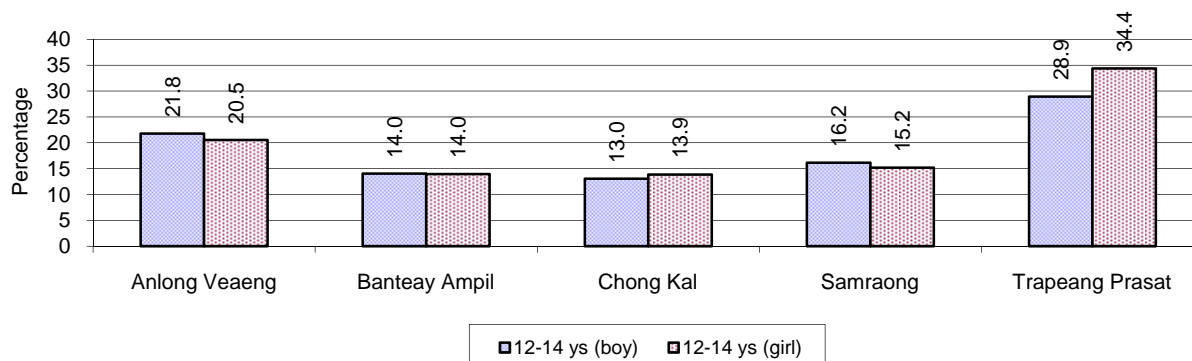


### 7.1.12 Enrolment at Lower Secondary Level, 2006-2008

Description	2006 %	2007 %	2008	
			%	Number
Total <b>children</b> aged 12-14 years old	9%	9%	8%	15,656 person(s)
Children aged 12-14 years old in school	77%	79%	81%	12,702 person(s)
Children aged 12-14 years old not in school	23%	21%	19%	2,954 person(s)
<b>Girls</b>				
Total <b>girls</b> aged 12-14 years old	9%	9%	8%	7,596 person(s)
Girls aged 12-14 years old in school	76%	80%	81%	6,138 person(s)
Girls aged 12-14 years old not in school	24%	20%	19%	1,458 person(s)
<b>Boys</b>				
Total <b>boys</b> aged 12-14 years old	9%	9%	8%	8,060 person(s)
Boys aged 12-14 years old in school	79%	78%	81%	6,564 person(s)
Boys aged 12-14 years old not in school	21%	22%	19%	1,496 person(s)

**Note:** Percentage is calculated on the basis of number of the total number of children within 12-14 yrs group, except for the first row of each section which is calculated on the basis of the total population.

### 7.1.13 Percentage of 12-14 year olds not in School, by District, in 2008



**Note:** Calculated as a percentage of the total 12-14 year old population in each district

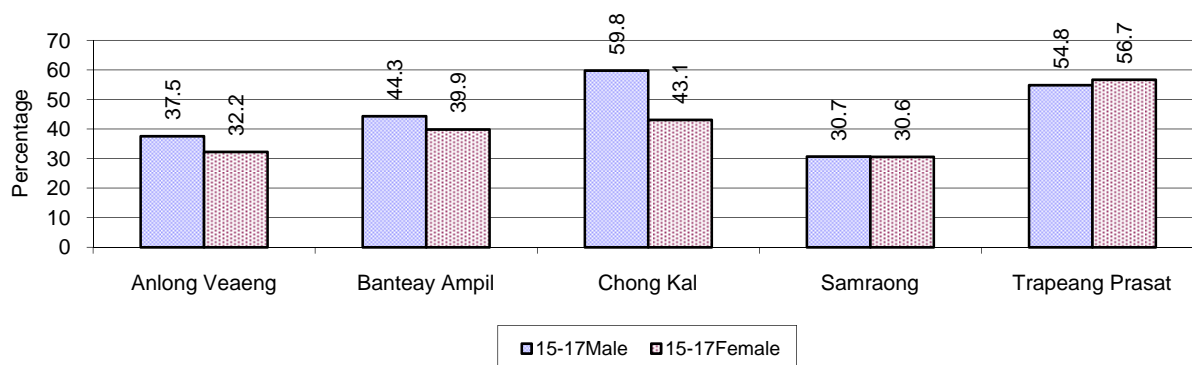
### 7.1.14 Upper Secondary Schools, 2006-2008

Description	2006	2007	2008
Number of upper secondary schools	4 school(s)	9 school(s)	5 school(s)
Number of upper secondary school rooms	20 room(s)	58 room(s)	62 room(s)
Number of upper secondary classes	20 class(es)	81 class(es)	50 class(es)
Number of upper secondary teachers	15 person(s)	49 person(s)	69 person(s)
Ratio of 15-17 yr olds to number of school	3,203	1,607	3,259
Ratio of 15-17 yr olds to number of school room	641	249	263
Ratio of 15-17 yr olds to number of classes	641	179	326
Ratio of 15-17 yr olds to number of teacher	854	295	236

### 7.1.15 Enrolment of 15-17 year old teenagers, 2006-2008

Description	2006	2007	2008
Number of teenage, 15-17 years old	12,812 person(s)	14,460 person(s)	16,293 person(s)
Number of teenage, 15-17 years old, who are not studying	5,121 person(s)	5,997 person(s)	6,772 person(s)
Percentage of teenage, 15-17 years old not studying	40%	41%	42%

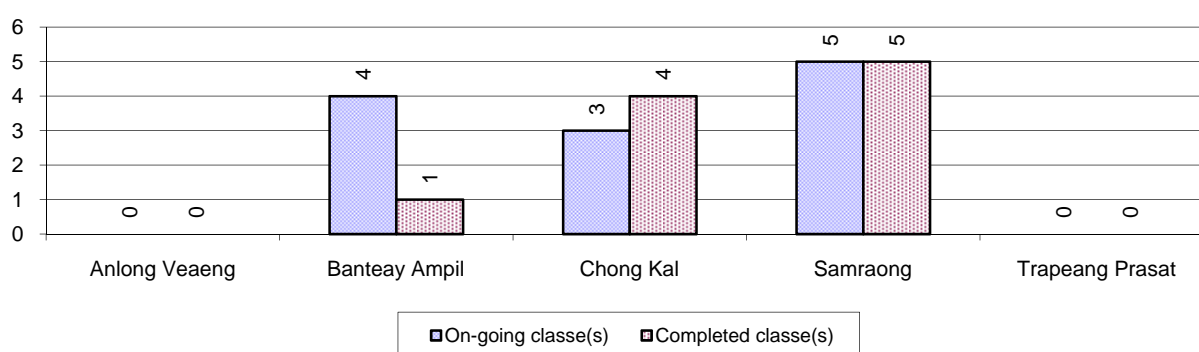
### 7.1.16 Percentage of 15-17 year old Teenagers not at School, by District, in 2008



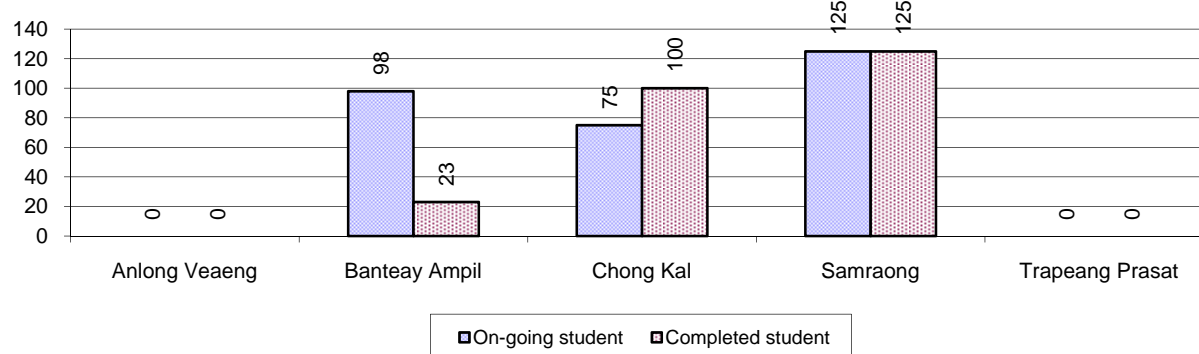
### 7.1.17 Literacy Classes as of 2008

Literacy classes	Organized by:		Other Program(s)	Total
	PDoEYS	NGOs		
Number of On-going literacy classes	11 class(es)	0 class(es)	1 class(es)	12 class(es)
Number of literacy students in on-going classes	273 person(s)	0 person(s)	25 person(s)	298 person(s)
Completed literacy class(es)	9 classes	0 classes	1 classes	10 classes
Number of literacy students that have completed literacy classes	223 person(s)	0 person(s)	25 person(s)	248 person(s)
Number of students that passed	79 person(s)	0 person(s)	25 person(s)	104 person(s)

### 7.1.18 Number of on-going and completed Literacy Classes, by District, in 2008



### 7.1.19 Students of on-going & completed Literacy Classes, by District, in 2008

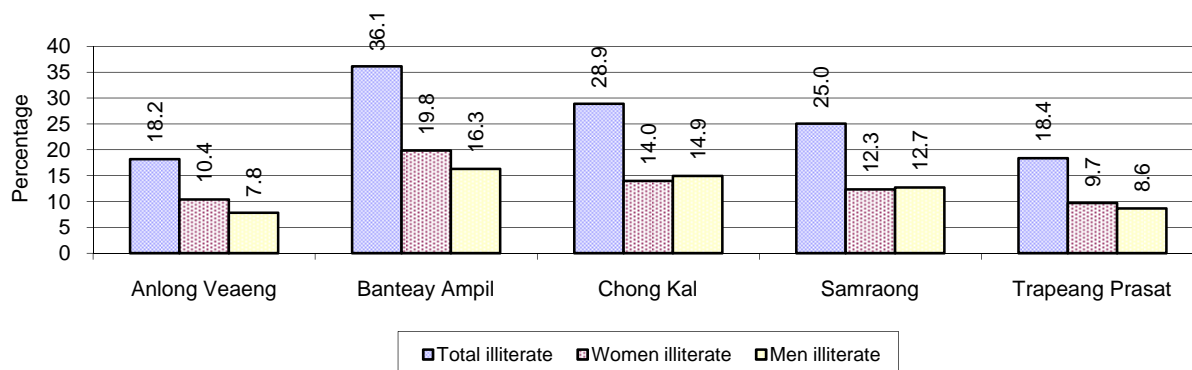


### 7.1.20 Percentage of illiterate People between 15-60, 2006-2008

Illiteracy Status	2006 %	2007 %	2008	
			%	Number
Illiterate people, 15-60 years old	30%	26%	25%	29,352 person(s)
Illiterate females, 15-60 years old	16%	14%	13%	15,338 person(s)
Illiterate people, 15-17 years old	20%	15%	15%	2,392 person(s)
Illiterate females, 15-17 years old	11%	7%	7%	1,168 person(s)
Illiterate people, 18-24 years old	27%	21%	21%	5,842 person(s)
Illiterate females, 18-24 years old	14%	11%	11%	2,960 person(s)
Illiterate people, 25-60 years old	34%	30%	30%	21,118 person(s)
Illiterate females, 25-60 years old	18%	16%	16%	11,210 person(s)

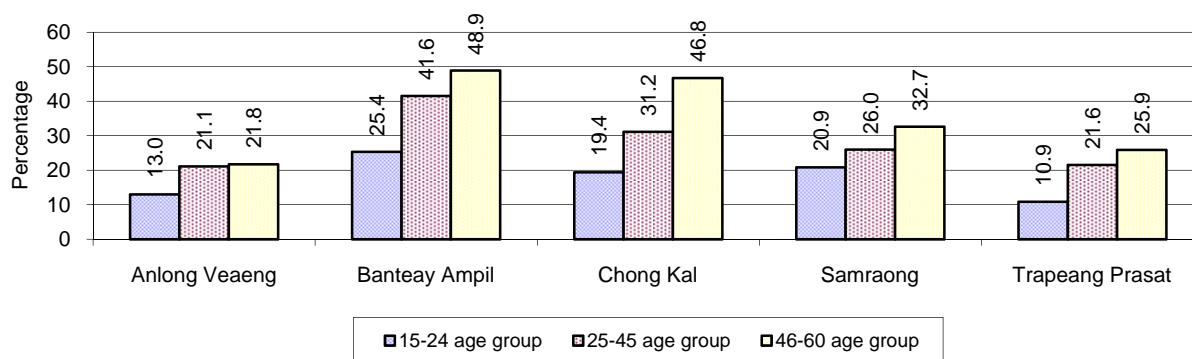
**Note:** Percentage is calculated on the basis of number of people in age each group.

### 7.1.21 Percentage illiterate People among 15-60 yrs old, by District, in 2008



**Note:** Percentages are calculated on the basis of number of people in that age group.

### 7.1.22 Percentage illiterate People for 15-24 yrs, 25-45 yrs and 46-60 yrs, by District, in 2008



**Note:** Percentage of illiterate people in each age group is calculated on the basis of number of people in that age group.

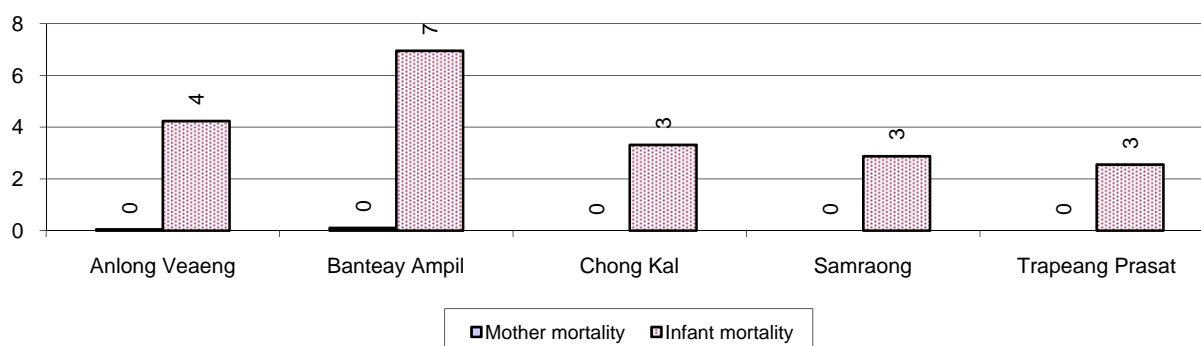


## 7.2 Health

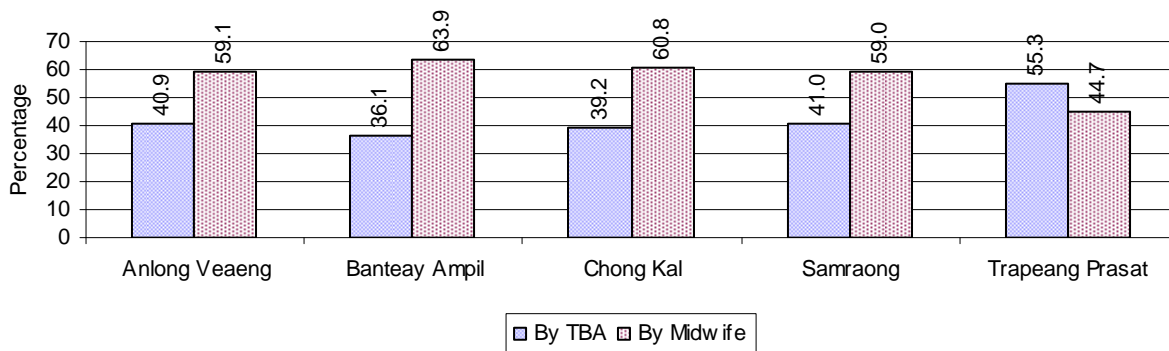
### 7.2.1 Health Situation of Women and Children, 2006-2008

Description	2006	2007	2008
Number families with a birth during the year	2,475 families	3,190 families	3,516 families
Number of women who had their baby delivered by a Traditional Birth Attendant	1,664 person(s)	1,604 person(s)	1,496 person(s)
Percentage of women who had their baby delivered by a Traditional Birth Attendant	67 %	50 %	43 %
Number of women who had their baby delivered by a midwife	811 person(s)	1,586 person(s)	2,020 person(s)
Percentage of women had their baby delivered by a midwife	33 %	50 %	57 %
Number of mothers who died within 1 month of giving birth	20 person(s)	27 person(s)	6 person(s)
Mothers who died within 1 month of giving birth per 100,000 families having a delivery	808	846	171
Number of infants born during the year	2,495 person(s)	3,249 person(s)	3,518 person(s)
Number of Infants who died within 1 month	109 person(s)	100 person(s)	62 person(s)
Infants mortality within 1 month per 1,000 births	44	31	18
Number of children who died below the age of 5.	104 person(s)	103 person(s)	64 person(s)
Number of infants, aged 9-12 months, born during the year	1,360 person(s)	1,958 person(s)	1,599 person(s)
Nr. infants, aged 9-12 months, not receiving full immunization	229 person(s)	257 person(s)	264 person(s)
% of 9-12 months infants, not receiving full immunization	17 %	13 %	17 %

### 7.2.2 Mothers dying within 0 days to 1 month of giving Birth and Infants dying within 1 month in 2008, by District in 2008

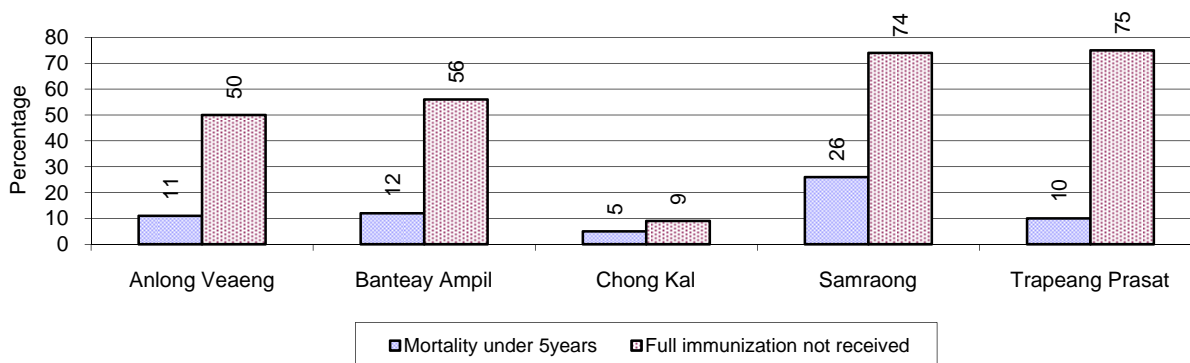


### 7.2.3 Percentage of Women delivering with a TBA or Midwife, by District in 2008



Note: Calculated as a percentage of total deliveries

### 7.2.4 Percentage of Children dying below 5 & of 9-12 months not receiving full Immunization, by District in 2008



Note: Mortality rate calculated as a percentage of the total 5 year old population. Lack of immunization received calculated as a percentage of the total number 9-12 months olds.

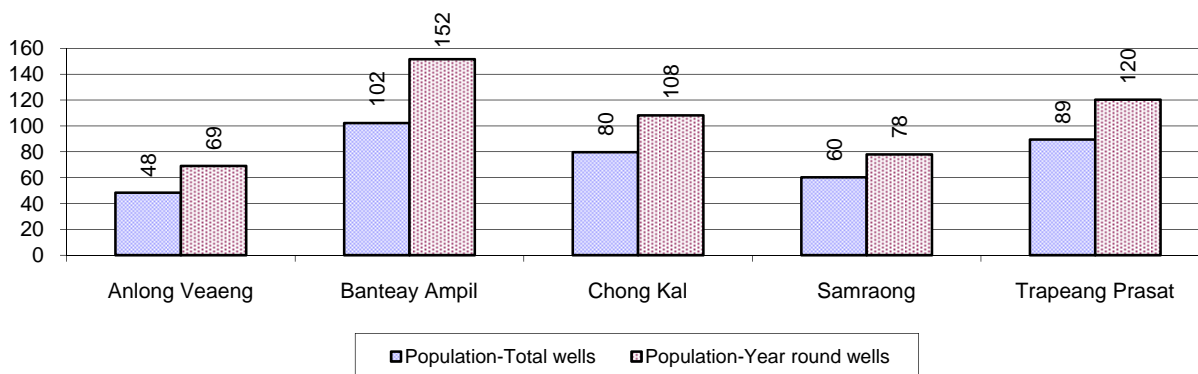
## 7.3 Water and Sanitation

### 7.3.1 Number of different types of Wells, 2006-2008

Type of wells	Number of wells by year		
	2006	2007	2008
<b>Total number of pumped or mixed wells</b>	1,590	1,666	1,921
Year-round usable pumped or mixed wells	1,299	1,388	1,528
Dry season unusable pump or mixed wells	291	278	393
Pump or mixed wells needing repair/rehabilitation	406	374	415
<b>Total number of ring wells</b>	603	690	844
Year-round usable ring wells	325	435	497
Dry season unusable ring wells	278	255	347
Ring wells needing repair/rehabilitation	272	218	244
<b>Total number of unprotected dug wells</b>	505	522	738
Year-round usable unprotected dug wells	241	280	311
Dry season unusable unprotected dug wells	264	242	427

Ring wells: dug wells with cement ring as lining

### 7.3.2 Ratio of People to Wells, by District in 2008

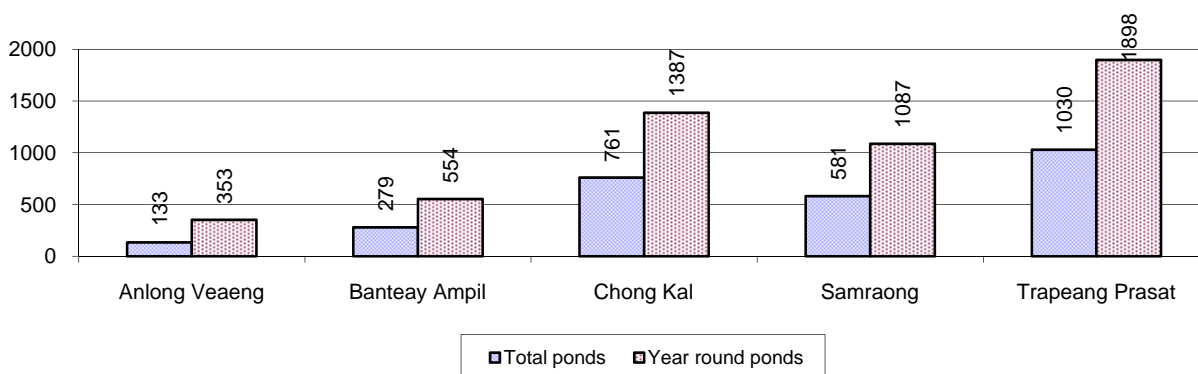


**Note:** Year-round wells excluding unprotected wells

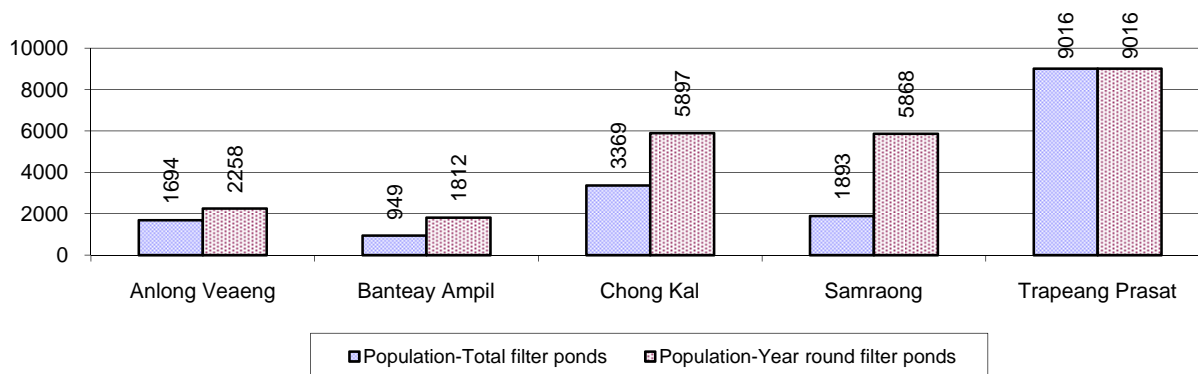
### 7.3.3 Potable Water Ponds, 2006-2008

Type of Pond	2006	2007	2008
<i>Total number of normal-type ponds</i>	382 pond	475 pond	564 pond
Year-round usable normal-type ponds	177 pond	242 pond	258 pond
Dry season unusable normal-type ponds	205 pond	233 pond	306 pond
Normal-type ponds needing repair/rehabilitation	181 pond	230 pond	208 pond
<i>Total number of filter ponds</i>	103 pond	85 pond	104 pond
Year-round usable filter ponds	62 pond	42 pond	55 pond
Filter ponds, dry season unusable	41 pond	43 pond	49 pond
Filter ponds needing repair/rehabilitate	56 pond	62 pond	56 pond

### 7.3.4 Ratio of People to normal Ponds, by District in 2008



### 7.3.5 Ratio of People to Filter Ponds, by District, in 2008

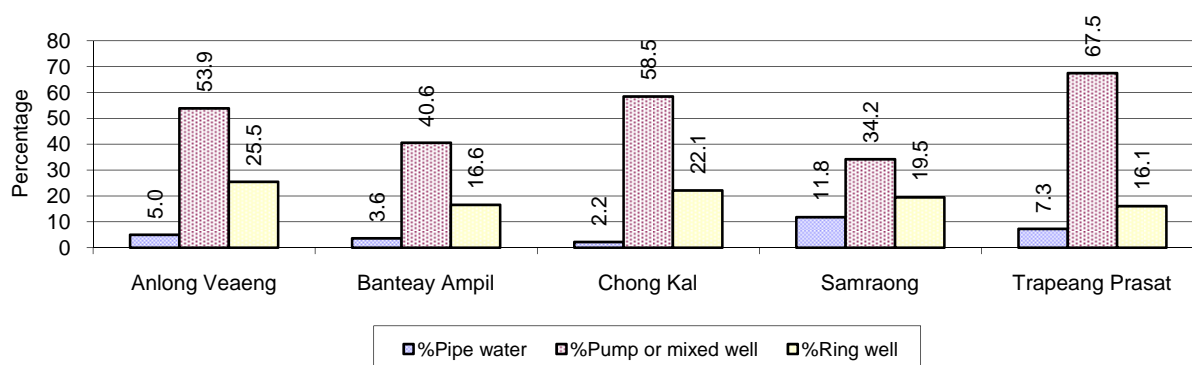


### 7.3.6 Source of potable Water for Households, 2006-2008

Water sources	2006 %	2007 %	2008	
			%	Number
Families using water from purification system	4%	6 %	7 %	2,782 families
Families using water from pump, mixed wells	47%	44 %	48 %	19,761 families
Families using water from ring wells and open dug wells	20%	16 %	20 %	8,004 families
Families using water from pond	16%	22 %	18 %	7,455 families
Families using water from rain water storage	1%	1 %	1 %	592 families
Families using water from rivers, lakes, natural ponds and reservoirs	12%	11 %	5 %	2,242 families

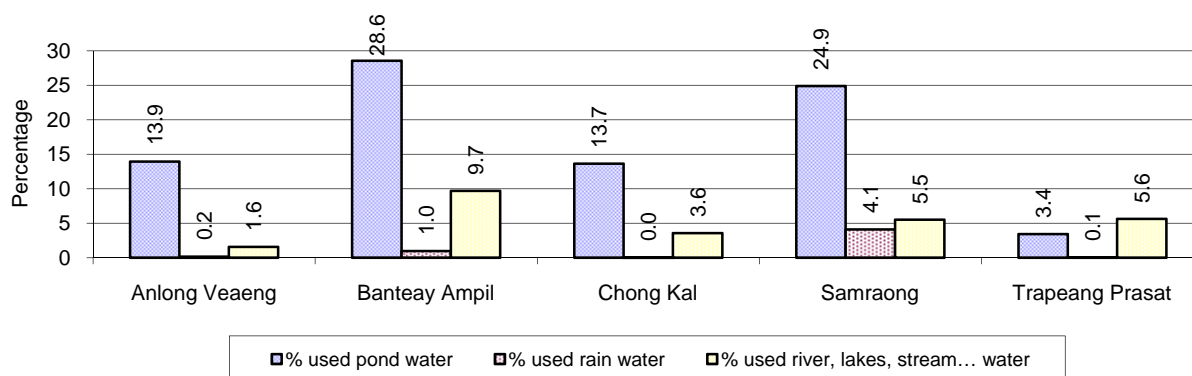
**Note:** Calculated as a percentage of the total number of families.

### 7.3.7 Percentage Families using different Water Sources, by District in 2008



**Note:** Calculated as a percentage of the total number of families in each district

### 7.3.8 Percentage Families using Water from Rain Water Storage, Ponds and natural Sources (rivers/lakes/natural ponds/reservoirs), by District 2008



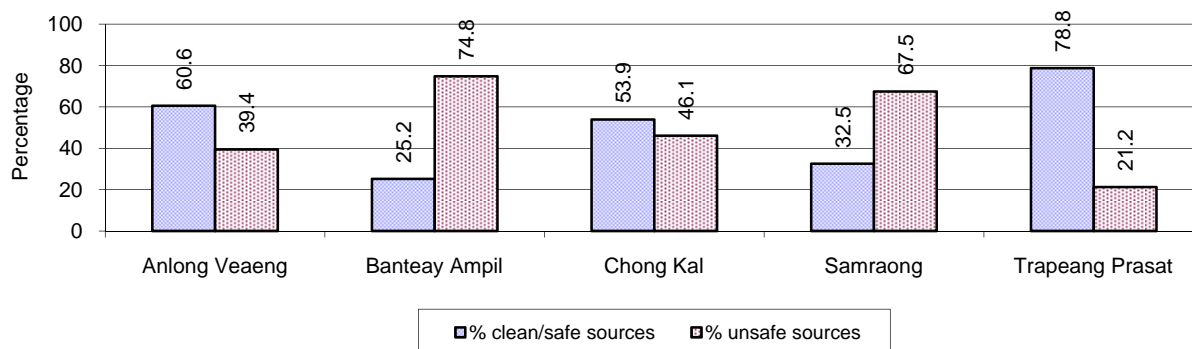
**Note:** Calculated as a percentage of the total number of families in each district

### 7.3.9 Drinking Water Sources in the dry Season, 2006-2008

Percentage Families that get drinking water from:	2006 %	2007 %	2008	
			%	Number
from clean/safe sources	54 %	50 %	47 %	19,379 families
from unsafe sources	46 %	50 %	53 %	21,457 families

**Note:** Calculated as a percentage of the total number of families.

### 7.3.10 Percentage Families using safe and unsafe Water Sources in the dry Season, by District in 2008



**Note:** Calculated as a percentage of the total number of families in each district.

### 7.3.11 Drinking Water Purification by Households, 2006-2008

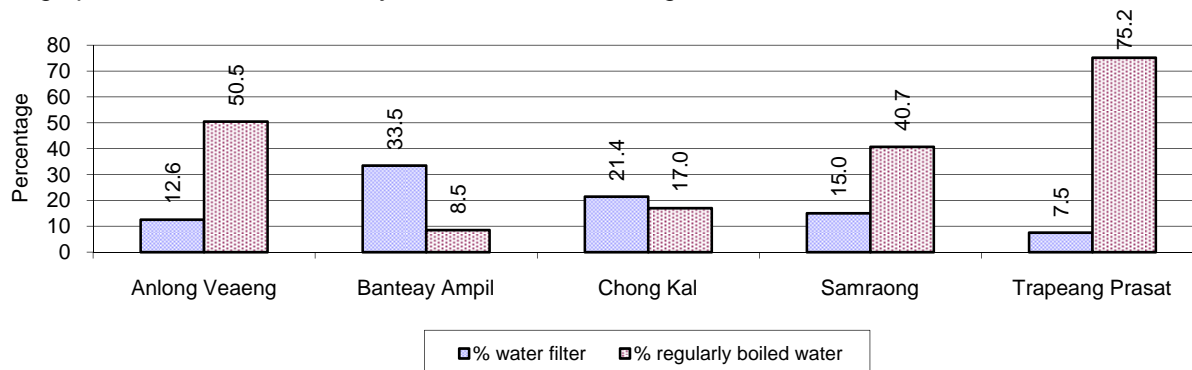
This table shows the different ways families make water safe for drinking.

Families, who:	2006	2007	2008	
	%	%	%	Number
Filter water for drinking	16%	18%	18 %	7,294 families
Boil water for drinking	34%	34%	39 %	16,116 families

**Note:** Calculated as a percentage of the total number of families

### 7.3.12 Percentage Families filtering Water or regularly boiling Water, by District in 2008

This graph shows the different ways families make drinking water safe.



**Note:** Calculated on as a percentage of the total number of families in each district.

### 7.3.13 Families' access to Water, 2006-2008

Families access to water	2006	2007	2008	
	%	%	%	Number
Families with water at home or in less than 150m	50%	24%	23 %	9,266 families
Families with water 150m or more away from home	23%	16%	17 %	6,874 families

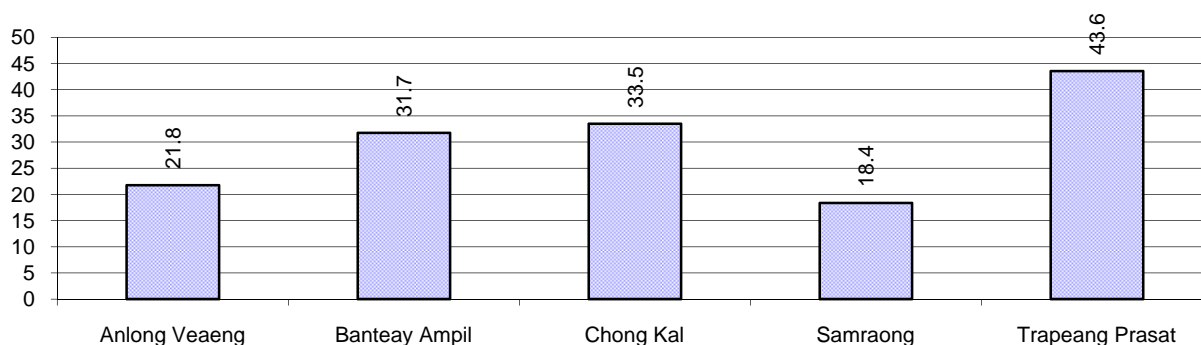
**Note:** Calculated as a percentage of the total number of families

### 7.3.14 Ratio of people to Latrines, 2006-2008

Description	2006	2007	2008	
	Ratio	Ratio	Ratio	Number
Ratio of people to latrines	32.0	26.1	25.5	7,538.0

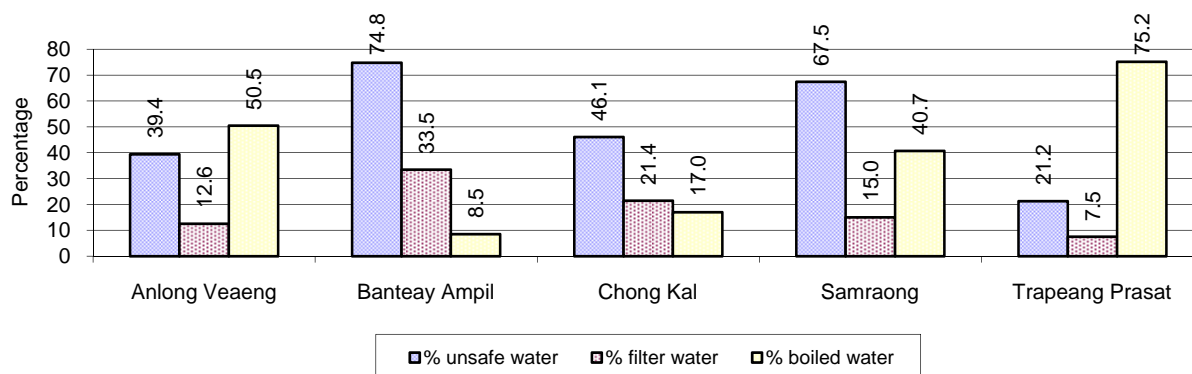
**Note:** Ratio calculated by dividing the total population by the total number of latrines

### 7.3.15 Ratio of People to Latrines, by District, in 2008



**Note:** Ratio calculated by dividing the number of houses with latrines by the total population in a district.

### 7.3.16 Percentage of Families drinking boiled, filtered or unsafe Water, by District, in 2008



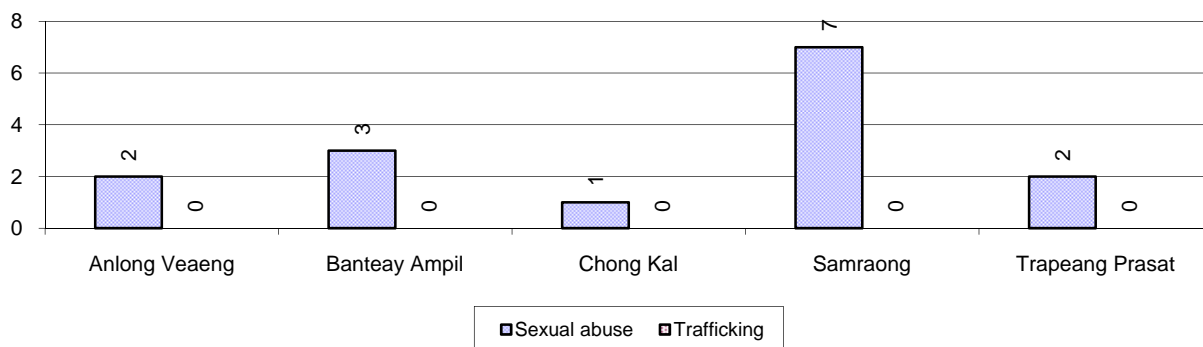
**Note:** Calculated as a percentage of the total number of families in each district.

## 7.4 Vulnerable groups

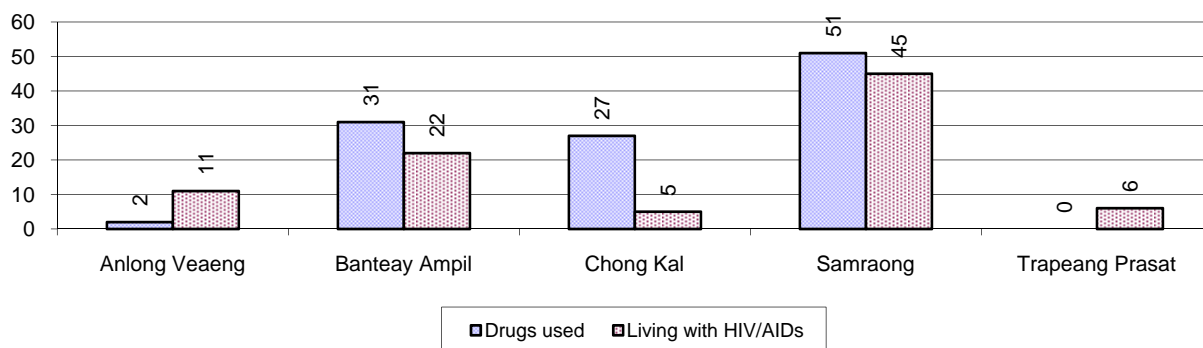
### 7.4.1 Vulnerable Groups in need of special Protection, 2006-2008

Vulnerable groups	2006	2007	2008
Victims of sexual abuse	12 person(s)	14 person(s)	15 person(s)
Victims of human trafficking	30 person(s)	25 person(s)	0 person(s)
Families with family member(s) using drugs	100 families	138 families	111 families
Families with family member(s) living with HIV/AIDS	42 families	65 families	89 families
Children under 18 yrs old whose parent died of AIDS	94 person(s)	70 person(s)	92 person(s)
Orphaned/abandoned children under 18 yrs old (all cases)	2,019 person(s)	1,468 person(s)	1,406 person(s)
Elderly persons without guardian	354 person(s)	249 person(s)	261 person(s)
Disabled people able to earn an income	336 person(s)	249 person(s)	317 person(s)
Disabled people unable to earn an income	219 person(s)	194 person(s)	232 person(s)
Disabled people under 18 yrs old	96 person(s)	84 person(s)	90 person(s)
Victims of natural disasters	1,754 families	4,636 families	1,964 families
Victims of land mines and unexploded weapons	178 person(s)	103 person(s)	106 person(s)

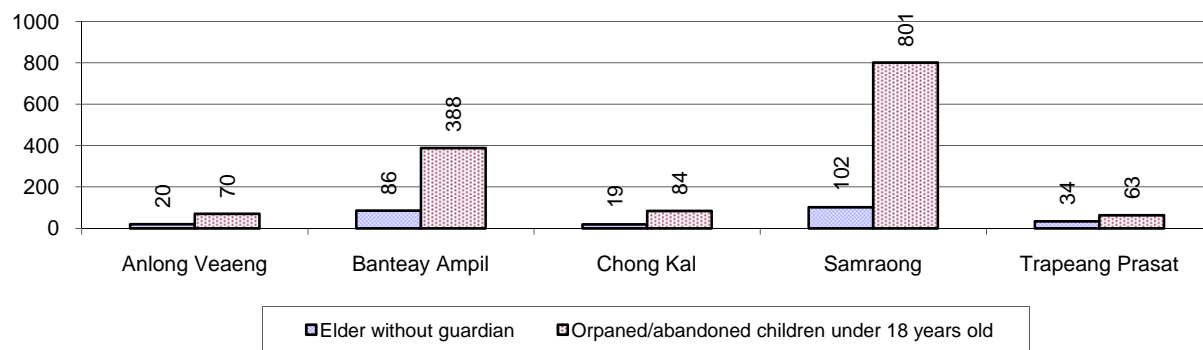
### 7.4.2 Registered Victims of sexual Abuse or Trafficking, by District, for 2008



### 7.4.3 Registered Families with Member(s) using Drugs or living with HIV/AIDS, by District, for 2008

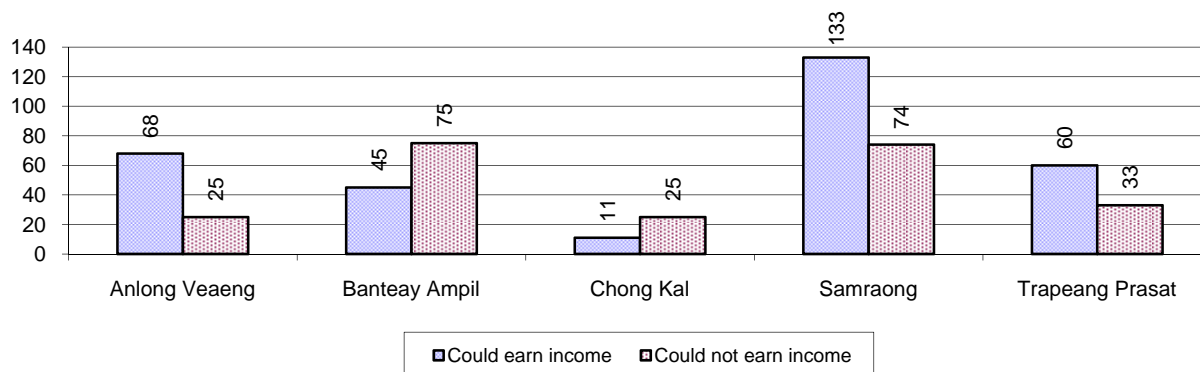


### 7.4.4 Elderly Persons without a Guardian and orphaned/abandoned Children under 18 years old, by District, for 2008

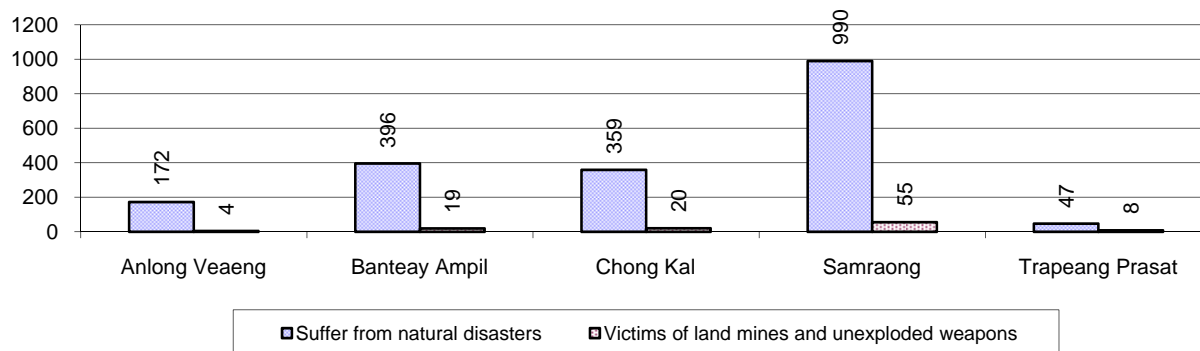




### 7.4.5 Number of disabled People who could or could not earn an Income, by District, for 2008



### 7.4.6 Number of Families who suffered from natural Disasters, and number of Victims of Land Mines and unexploded Weapons, by District, in 2008



## 7.5 Migration

### 7.5.1 Migration, 2006-2008

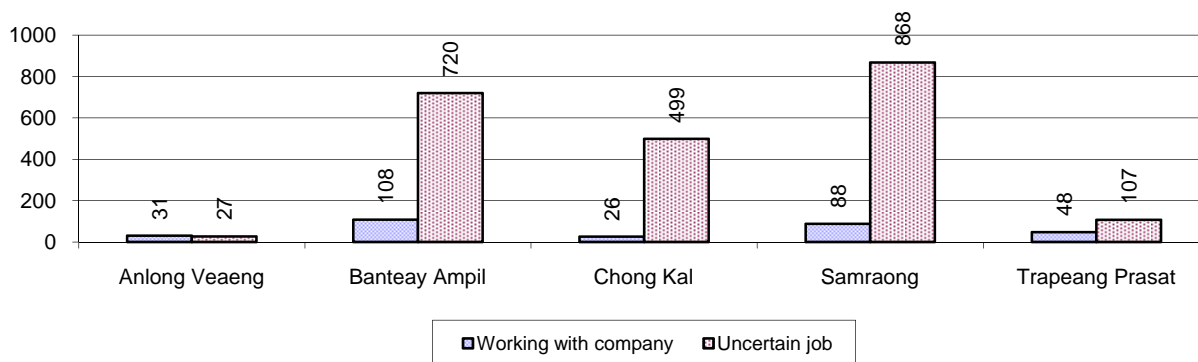
Description	2006	2007	2008
Number of families permanently in-migrated	1,620 families	1,601 families	2,751 families
Total number of people	6,097 person(s)	5,694 person(s)	9,943 person(s)
Total number of female	3,208 person(s)	2,771 person(s)	4,834 person(s)
Number of families permanently out-migrated	426 families	481 families	660 families
Total number of people	1,629 person(s)	1,858 person(s)	2,456 person(s)
Total number of female	844 person(s)	901 person(s)	1,205 person(s)
Number of families staying temporarily	742 families	649 families	841 families
Total number of people	2,726 person(s)	2,144 person(s)	2,353 person(s)
Total number of female	1,430 person(s)	1,054 person(s)	1,296 person(s)

### 7.5.2 Job Migration

Description	2006	2007	2008
Number of people migrated to work with company/factory	0%	0%	0%
Number of people migrated to work, but have uncertain jobs	2%	3%	2%

**Note:** Calculated as a percentage of the total population of 18-60 year olds

### 7.5.3 Number of People working outside their home Villages in a Company/Factory or with an uncertain Job in 2008

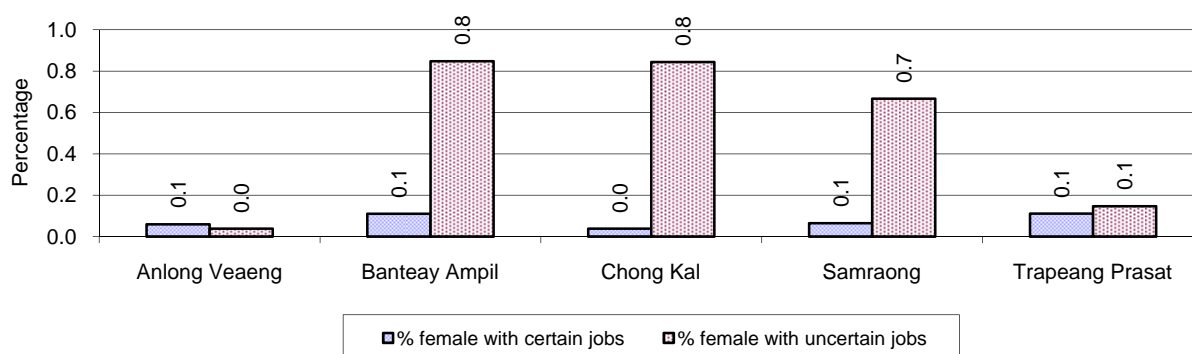


### 7.5.4 Female migration, 2006-2008

Description	2006 %	2007 %	2008	
			%	Number
Total number of migrants	1.3%	1.7%	1.3%	2,522 person(s)
Number of female migrants	0.6%	0.8%	0.6%	1,145 person(s)
<hr/>				
Total number of migrants, who go to work with company/factory (with certain jobs)	0.1%	0.2%	0.2%	301 person(s)
Number of female migrants with certain jobs	0.1%	0.1%	0.1%	151 person(s)
<hr/>				
Total number of migrants with uncertain jobs	1.2%	1.5%	1.2%	2,221 person(s)
Number of female migrants with uncertain jobs	0.5%	0.7%	0.5%	994 person(s)

**Note:** Calculated as a percentage of the total population

### 7.5.5 Percentage female Migrants with certain and uncertain Jobs, by District, in 2008



**Note:** Calculated as a percentage of the total population of the district

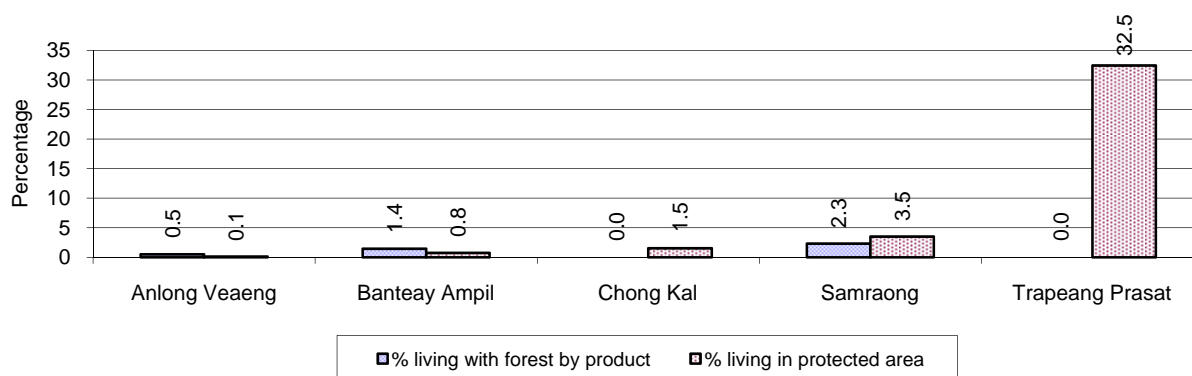
## 8 Natural Resources and Environment (NRE)

### 8.1 Families involved with NRE issues, 2006-2008

Description	2006 %	2007 %	2008	
			%	Number
Families living with forest by products	0 %	0 %	1 %	442 families
Families living in a protected area	11 %	9 %	8 %	3,106 families
Houses with access to garbage collection service	1 %	2 %	1 %	336 families
Families affected by environmental pollution	2 %	2 %	0 %	108 families
Families using chemical fertilizer	40 %	40 %	38 %	15,496 families
Families using chemical pesticide	10 %	10 %	12 %	4,991 families

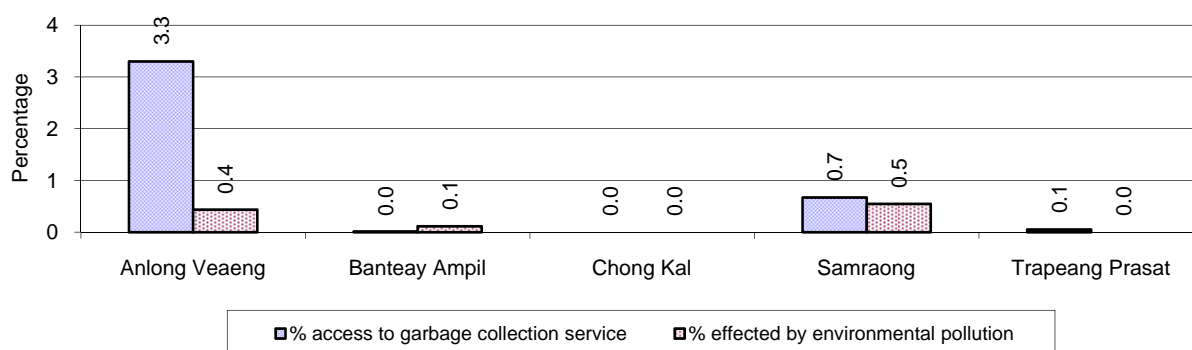
**Note:** Calculated as a percentage of the total number of families

### 8.2 Percentage of Families involved with Natural Resource issues, by District, for 2008



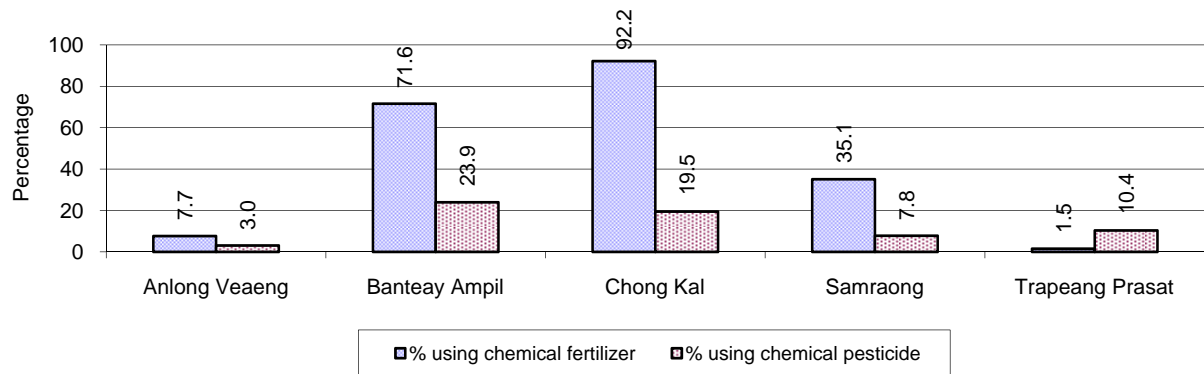
**Note:** Calculated as a percentage of the number of families in each district

### 8.3 Percentage Houses with access to Garbage collection and Families affected by environmental Pollution, by District, for 2008



**Note:** Garbage collection is calculated as a percentage of the total number of houses in each district and families affected by environmental pollution is calculated as a percentage of the total number of families in each district.

### 8.4 Percentage Families using chemical Fertilizer and chemical Pesticides, by District, for 2008



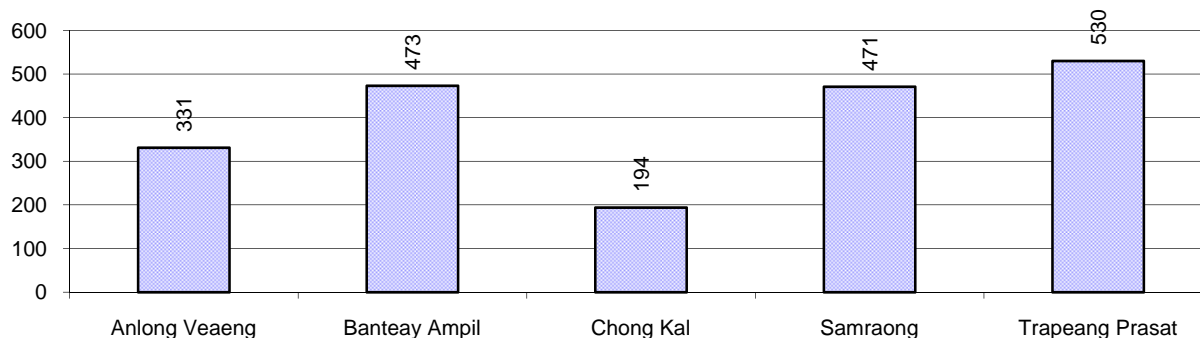
**Note:** Calculated as a percentage of the total number of families in each district

## 9 Administration and Security

### 9.1 Birth Registration, 2006-2009

Description	2006	2007	2008
Number of infants to be registered	2,386 person(s)	3,149 person(s)	3,456 person(s)
Number of unregistered infants the year	1,296 person(s)	1,920 person(s)	1,999 person(s)
Percentage of infants unregistered	54 %	61 %	58 %

### 9.2 Number of unregistered Infants born in 2008, by District

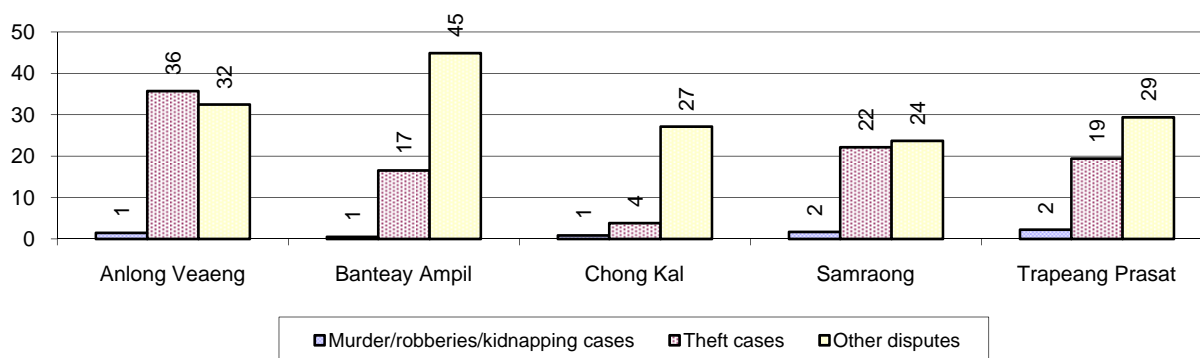


### 9.3 Registered criminal Cases, 2006-2008

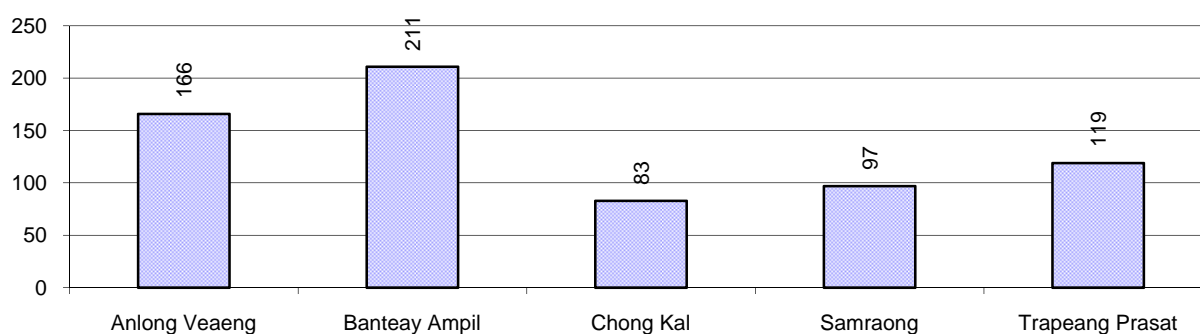
Description	2006	2007	2008
Murders, robberies and kidnapping cases	45 case(s)	10 case(s)	27 case(s)
Theft cases	357 case(s)	365 case(s)	396 case(s)
land dispute cases	799 case(s)	601 case(s)	676 case(s)
Other disputes cases	535 case(s)	698 case(s)	598 case(s)

*Note: this reflects only registered criminal cases*

### 9.4 Registered criminal Cases per 10,000 people, by District, for 2008



### 9.5 Number of registered Land Disputes, by District, in 2008

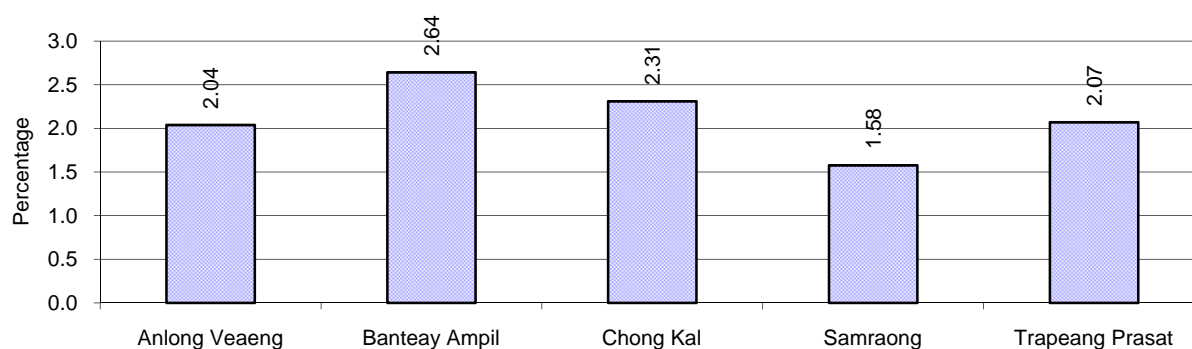


## 10 Gender

### 10.1 Reported Domestic Violence, 2006-2008

Description		2006	2007	2008
Families experiencing domestic violence		1,046 families	874 families	846 families(s)
% families experiencing domestic violence		3 %	2 %	2 %
Domestic violence cases reported by village chiefs		459 case(s)	538 case(s)	665 case(s)
Type	Physical violence	164 case(s)	362 case(s)	409 case(s)
	Sexual violence	21 case(s)	6 case(s)	12 case(s)
	Mental violence	172 case(s)	108 case(s)	124 case(s)
	Household economic violence	102 case(s)	62 case(s)	120 case(s)
Number of administrative decisions on domestic violence		0 case(s)	442 case(s)	555 case(s)
% of administrative decisions on domestic violence		0 %	82 %	83 %

### 10.2 Percentage of reported cases of Families experiencing domestic Violence, by District, in 2008



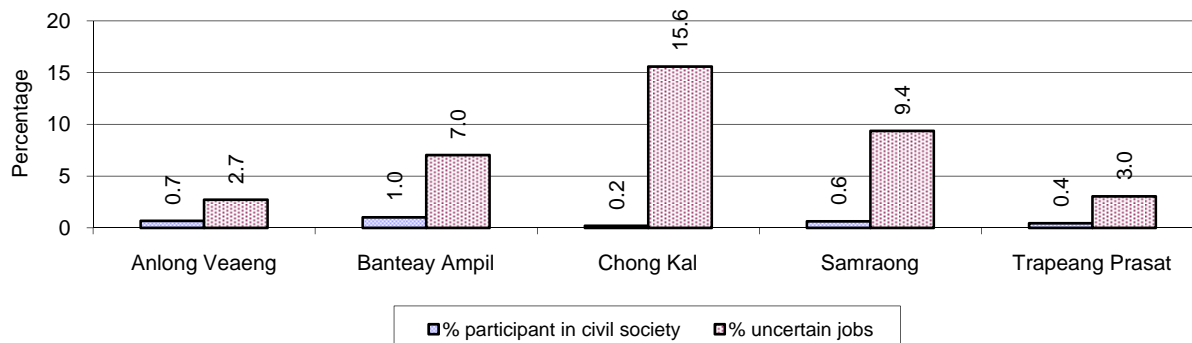
**Note:** Calculated as a percentage of the total number of families in each district

### 10.3 Women's involvement, 2006-2008

Description	2006 %	2007 %	2008	
			%	Number
People participating in civil society	2%	2%	2%	2,885 person(s)
Women participating in civil society	1%	1%	1%	1,213 person(s)
People, 18-60 yrs, with uncertain/irregular jobs	8%	8%	14%	13,949 person(s)
Women, 18-60 yrs, with uncertain/irregular jobs	4%	4%	7%	7,241 person(s)

**Note:** Participation can be in NGOs, CBOs, credit groups, women's unions, parties and other civil society organizations. The first section is calculated as a percentage of the total population. The second section is calculated as a percentage of the total 18-60 year old population.

### 10.4 Percentage of Female Participants in Civil Society and of 18-60 year women with uncertain Jobs, by District, in 2008



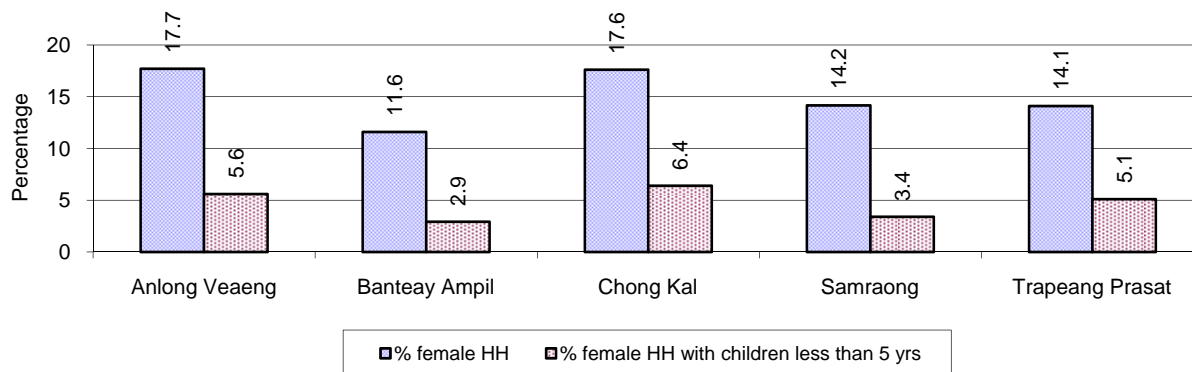
**Note:** Percentage of female participants in civil society is calculated as a percentage of the total population per district. The percentage of 18-60 years old women with uncertain jobs is calculated as a percentage of the total 18-60 year old population per district.

### 10.5 Female-headed Households, 2006-2008

Families with:	2006	2007	2008	
	%	%	%	Number
Households in which a woman is the family head	20%	16%	15%	5,982 families
Households in which a woman is the family head with children of less than 5 yrs	7%	5%	4%	1,785 families

**Note:** Calculated as a percentage of the total number of families

### 10.6 Percentage female-headed Households and with Children of less than 5 years old, by District in 2008



**Note:** Calculated as a percentage of the total number of families in each district  
HH: Headed Household



## 11 Indigenous People in the District

### 11.1 Ethnic Minorities in the District, 2006-2008

Race of indigenous	2006		2007		2008	
	# families	# population	# families	# population	# families	# population
Phnong	17 families	110 person(s)	17 families	113 person(s)	56 families	288 person(s)
Kouy	68 families	373 person(s)	113 families	623 person(s)	92 families	473 person(s)
Stieng	1 families	11 person(s)	3 families	28 person(s)	1 families	11 person(s)
Mil	0 families	0 person(s)	0 families	0 person(s)	0 families	0 person(s)
Kroal	0 families	0 person(s)	1 families	5 person(s)	1 families	9 person(s)
Thmorn	0 families	0 person(s)	0 families	0 person(s)	0 families	0 person(s)
Khaonh	0 families	0 person(s)	0 families	0 person(s)	2 families	17 person(s)
Tompouonn	5 families	28 person(s)	2 families	18 person(s)	2 families	13 person(s)
Charay	2 families	13 person(s)	2 families	18 person(s)	0 families	0 person(s)
Kroeung	0 families	0 person(s)	0 families	0 person(s)	0 families	0 person(s)
Kavet	0 families	0 person(s)	0 families	0 person(s)	0 families	0 person(s)
Saouch	0 families	0 person(s)	0 families	0 person(s)	0 families	0 person(s)
Lun	2 families	7 person(s)	0 families	0 person(s)	0 families	0 person(s)
Kachak	0 families	0 person(s)	0 families	0 person(s)	0 families	0 person(s)
Praov	0 families	0 person(s)	0 families	0 person(s)	0 families	0 person(s)
Others	0 families	0 person(s)	0 families	0 person(s)	0 families	0 person(s)
<b>Total</b>	95 families	432 person(s)	138 families	692 person(s)	154 families	523 person(s)

**Note:** "Others" refer to other ethnic groups which are not listed.

### 11.2 Other Minorities in the District, 2006-2008

Minority	2006		2007		2008	
	# families	# population	# families	# population	# families	# population
Khmer Islamic	17 families	76 person(s)	13 families	82 person(s)	39 families	187 person(s)
Vietnamese	19 families	74 person(s)	16 families	83 person(s)	32 families	116 person(s)
Laos	6 families	10 person(s)	4 families	16 person(s)	3 families	6 person(s)

**Note:** Number of indigenous and minority population are additional data, so some village may not recorded.



# **SECTION C: PLANS AND PROJECTS**



## 12 Priorities and Plans

### 12.1 Priorities of the Districts in the Province for 2009 by Sector

Below data summarized by sub-sector from the District Priority Activity Matrix (DPAM) taken from the CDPD. The DPAM is used for the District Integration Workshop (DIW), to show what kind of projects the Communes have proposed in their Commune Investment Plan (CIP) for 2009. Donors, departments and other agencies then considers which projects they want to support and which projects they are not interested in. This results in Temporary Agreements between the Commune Council and the Supporter (NGO, Department, private donor, etc).

Sub Sector	Type of Activities	District										Total	
		Anlong Veang		Banteay Ampil		Chong Kal		Samraong		Trapeang Prasat			
		Act	Com	Act	Com	Act	Com	Act	Com	Act	Com	Act	Com
<b>Economic</b>													
Agriculture	Crop cultivation training	10	4	12	3	12	4	10	4	40	6	84	21
	Livestock health	4	4	3	2	6	3	6	4	5	3	24	16
	Livestock training	4	3	4	4	2	2	4	4	9	5	23	18
	Farmer community support	0	0	1	1	0	0	0	0	0	0	1	1
	Agriculture inputs	2	1	9	3	11	4	7	4	4	3	33	15
	Fisheries	5	3	5	4	5	3	5	3	10	5	30	18
Roads	Road infrastructure	5	4	0	0	7	2	0	0	25	6	37	12
	Road infrastructure construction	17	5	12	4	11	3	20	5	0	0	60	17
	Road infrastructure rehabilitation	5	4	4	3	1	1	1	1	0	0	11	9
Irrigations	Irrigation infrastructure	1	1	1	1	6	2	4	3	13	6	25	13
	Irrigation infrastructure construction	7	4	6	3	5	2	8	4	0	0	26	13
	Irrigation infrastructure rehabilitation	1	1	6	4	2	2	6	4	0	0	15	11
Credit	Cash credit	1	1	0	0	0	0	0	0	1	1	2	2
	Agriculture inputs credit	0	0	6	4	2	2	1	1	1	1	10	8
	Animal bank	2	1	1	1	7	2	2	2	3	3	15	9
Rural economy	Rural market	0	0	0	0	0	0	1	1	0	0	1	1
	Others	0	0	0	0	0	0	0	0	3	2	3	2
<b>Social</b>													
Health	Reproductive health	4	3	7	3	5	3	4	3	8	5	28	17
	HIV/AIDS	1	1	3	3	0	0	0	0	6	5	10	9
	Health campaign	1	1	3	2	2	1	6	4	3	3	15	11
	Immunization	3	3	3	2	3	3	2	2	7	5	18	15
	Health capacity building	0	0	1	1	0	0	0	0	1	1	2	2

Sub Sector	Type of Activities	District										Total	
		Anlong Veang		Banteay Ampil		Chong Kal		Samraong		Trapeang Prasat			
		Act	Com	Act	Com	Act	Com	Act	Com	Act	Com	Act	Com
	Health management	0	0	0	0	2	1	1	1	0	0	3	2
	TBA support/training	0	0	2	2	2	2	1	1	5	5	10	10
	Malaria control	3	3	0	0	1	1	5	4	11	5	20	13
	Dengue fever control	1	1	1	1	3	3	0	0	4	4	9	9
	Health center operation	0	0	0	0	1	1	1	1	0	0	2	2
	Health infrastructure	2	2	2	2	2	2	1	1	4	3	11	10
	Early child care	1	1	4	4	2	1	3	3	3	3	13	12
	Domestic water supply	1	1	2	2	3	2	0	0	16	6	22	11
	Domestic sanitation	6	5	3	3	4	3	3	2	13	6	29	19
	Health infrastructure construction	0	0	1	1	0	0	1	1	1	1	3	3
	Water supply	0	0	4	3	7	4	0	0	0	0	11	7
	Drinking wells/pond construction	10	4	7	3	3	2	6	4	0	0	26	13
	Drinking wells/pond rehabilitation	2	1	7	4	3	2	4	3	0	0	16	10
Education	Literacy	0	0	4	3	7	3	5	3	7	4	23	13
	School building	6	5	6	4	6	3	3	3	7	6	28	21
	Kindergarten and child care	5	5	4	4	4	3	8	5	7	4	28	21
	School enrollment	4	3	3	2	4	2	8	5	3	3	22	15
	School dropout reduction	0	0	3	2	1	1	1	1	3	3	8	7
	Vocational training	1	1	0	0	0	0	1	1	4	2	6	4
	School materials	0	0	0	0	0	0	0	0	1	1	1	1
	Youth related activities	1	1	0	0	0	0	0	0	0	0	1	1
Social other	Disabled people	0	0	0	0	2	1	0	0	0	0	2	1
	Relief	0	0	2	2	0	0	0	0	0	0	2	2
	Orphan children	0	0	0	0	2	2	0	0	0	0	2	2
	Religion	0	0	3	2	0	0	0	0	0	0	3	2
	Elderly people	1	1	0	0	0	0	0	0	0	0	1	1
<b>NREM</b>													
NREM education	NREM training	7	5	4	2	4	3	3	3	19	6	37	19
	NREM campaign	2	2	0	0	0	0	0	0	3	3	5	5
Natural resource protection	Tree planting	0	0	0	0	2	2	1	1	0	0	3	3
	Fisheries protection	2	2	0	0	4	3	5	4	0	0	11	9
	Forestry protection	0	0	1	1	2	2	0	0	0	0	3	3
	Wildlife/temple protection	0	0	1	1	1	1	0	0	0	0	2	2

Sub Sector	Type of Activities	District										Total	
		Anlong Veang		Banteay Ampil		Chong Kal		Samraong		Trapeang Prasat			
		Act	Com	Act	Com	Act	Com	Act	Com	Act	Com	Act	Com
Environmental management	Waste/pollution control	0	0	0	0	1	1	1	1	12	6	14	8
<b>Administration and Security</b>													
CS Administration	CS capacity building	8	4	5	3	6	4	5	4	12	5	36	20
	CS planning formulation	0	0	0	0	0	0	0	0	1	1	1	1
	CS furniture/supplies	2	1	3	2	2	2	0	0	0	0	7	5
	Land used planning	5	4	5	3	5	4	6	3	4	4	25	18
Local Security	Local security	7	3	2	1	7	3	3	3	9	4	28	14
	Demining	5	4	3	3	2	2	3	3	5	5	18	17
Local Society	Information dissemination	5	3	0	0	5	2	1	1	4	2	15	8
<b>Gender</b>													
Gender policy support	Gender mainstreaming	0	0	1	1	3	3	1	1	9	6	14	11
	Gender capacity building	2	2	0	0	0	0	0	0	2	2	4	4
	Women and children rights	1	1	3	2	1	1	0	0	5	3	10	7
	Skill training for women	1	1	4	3	4	4	5	3	8	6	22	17
Gender legal protection	Domestic violence prevention	5	4	3	3	4	4	5	4	6	5	23	20
	Anti-trafficking	3	3	2	2	1	1	0	0	10	6	16	12
	Child protection	0	0	0	0	0	0	0	0	3	3	3	3

**Act.:** number of activities proposed relating to a sub-sector.    **Com.:** number of communes that proposed activities relating to a sub-sector.

### 12.2 Total Expenditure on C/S Fund Projects by sector and district between 2005 and 2008

Sector	Total Cost in Million Riels				
	Anlong Veang	Banteay Ampil	Chong Kal	Samraong	Trapeang Prasat
Irrigation	6.03		33.85	160.06	
Rural Domestic Water Supplies		10.95			
Rural Transport	543.83	526.53	425.24	486.21	630.77

**Source:** PID



### 13 District level Projects from 2006 to 2009

District Initiative Projects are funded by Danida and DFID through the PSDD (UNDP, DFID and SIDA).

#### **Funding for 2006-2008**

Between 2006 and 2008 there were 14 provinces funded by PSDD and 10 by Danida and DFID. The list of provinces and who funded them is below

#### *Danida and DFID funded DIPs:*

Kampong Cham	Kampong Speu	Koh Kong	Kratie	Mondulkiri
Pursat	Ratanakiri	Siem Reap	Sihanoukville	Kep

#### *PSDD funded DIPs:*

Banteay Meanchey	Battambang	Kampong Chhnang	Kandal	Phnom Penh
Prey Veng	Svay Rieng	Takeo	Kampong Thom	Preah Vihear
Stung Treng	Kampot	Oddar Meanchey	Pailin	

#### **Funding for 2009**

In 2009 there was a change to the number of provinces funded by the two streams. Danida and DFID were still funding the same 10 provinces they had been funding the three years previous, but two more provinces were added *Kampong Thom and Kampot*. Now PSDD funded 12 provinces and Danida and DFID funded 12.

### 13.1 District Initiative Infrastructure Projects from 2006 to 2009

#### 13.1.1 District Initiative Infrastructure Projects for 2006 to 2008

Khan	Date	Project Name	Implementing Agencies	Budget (US\$)	Project Output & Capacity	Number of Beneficiaries
Chong Kal	2007	Construct laterite road	Inter-commune	7,780.00		
Chong Kal	2008	Laterite Road construction	Inter-commune	8,000.00	896m	2communes,9,736persons
Samraong	2006	Road repair and laterite surfacing	Inter-commune	7,387.91		
Samraong	2006	Two single culvert with diameter 60cm	Inter-commune	989.87		
Samraong	2006	One single culvert with diameter 80cm	Inter-commune	709.30		
Samraong	2006	One double culvert with diameter 80cm	Inter-commune	1,213.87		
Samraong	2006	Afridev wells	Inter-commune	1,450.00		
Samraong	2007	Construct earth road	Inter-commune	7,761.00		
Samraong	2008	Earth Road construction	Inter-commune	8,431.50	1050m.	2communes,19,094persons

#### 13.1.2 District Initiative Infrastructure Projects in 2009

District	Project Name	Sector	Implementing Agency	Budget	Project outputs/ capacities	No. of Beneficiaries		Progress	Remarks on Issues of Progress
						Total	Female		
Chongkal	Laterite road construction	RRD	PMC	\$14,951.30	1,643 m	2,200	1,500	80%	
Chongkal	Culvert construction	RRD	PMC	\$5,042.00	3places	2,200	1,500	100%	
Samrong	Earth road construction	RRD	PMC	\$10,900.27	1,065 m	1,700	809	60%	
Samrong	Water gate construction	WRM	PMC	\$9,150.00	1place	1,700	809	100%	

## 13.2 District Initiative Service Projects from 2006 to 2009

### 13.2.1 District Initiative Service Projects for 2006 to 2008

District	Date	Project Names	Implementing agencies	Budget (US\$)	Project Output & Capacity	Number of Beneficiaries
Chung Kal	2007	Training on compost making technique	District Agri	705.00		
Chung Kal	2007	Training on land law	District Land	380.00		
Chung Kal	2007	Dissemination on domestic violence and gender concept	District WA	420.00		
Chung Kal	2007	Dissemination NRE protection law	Provincial Environment	300.00		
Chung Kal	2007	Strengthen village children network	District SA	392.50		
Chung Kal	2007	Education on Buddhism and Khmer culture and tradition	District Religion	240.00		
Chung Kal	2007	Organize International Women's Day	District WA	100.00		
Chung Kal	2007	Organize International Children's Day	District Education	100.00		
Chung Kal	2007	Organize Hygiene's Day	HC	640.00		
Chung Kal	2008	Dissemination on law against domestic violence	District WA	513.12	12courses	4communes, 360persons
Chung Kal	2008	Training on gender concept	District WA	108.76	1course	4communes, 30persons
Chung Kal	2008	Dissemination on land law	District land	462.08	8courses	4communes, 240persons
Chung Kal	2008	Produce sign board to conserve ancient temples	District culture office	935.42	2sing boards	2communes, 2773persons
Chung Kal	2008	Training on compost making	District agriculture office	492.08	8courses	4communes, 280persons
Chung Kal	2008	Literacy classes	District Education	738.54	2courses	2communes, 50persons
Samroang	2006	Computer training for district officials 6 persons	District	420.00		
Samroang	2006	Sewing/ tailoring training for poor women 2 women per communes, 5 communes	District	2,000.00		
Samroang	2006	Training on implementation and project monitoring	District	140.00		
Samroang	2006	Meeting on illegal fishing in all communes of district	District	140.00		
Samroang	2006	Education on forest illegal logging	Environment department	1,810.00		

District	Date	Project Names	Implementing agencies	Budget (US\$)	Project Output & Capacity	Number of Beneficiaries
Samroang	2007	Produce posters for prevention from illegal fishing	District Agri	1,161.00		
Samroang	2007	Vocational training on hair dressing	District WA	1,485.00		
Samroang	2007	Conduct preventions from illegal fishing activities	District Agri	340.00		
Samroang	2007	Training on traffic law for Khan, Sangkat and villages	District Police	161.50		
Samroang	2007	Training on land law	District Land	137.50		
Samroang	2008	Dissemination on land law	District land	427.60	10 course	5communes, 300persons
Samroang	2008	Diversity rice production	DAFF	819.10	3courses	2communes, 75persons
Samroang	2008	Dissemination on law against domestic violence	District WA	601.99	14 courses	4communes, 457persons
Samroang	2008	Primary health care training	Health center	604.16	16 courses	2communes, 400persons
Samroang	2008	Dissemination on dengue fever	Health center	360.15	15 courses	2communes, 375persons

### 13.2.2 District Initiative Service Projects in 2009

District	Project Name	Sector	Implementing Agency	Budget	Project outputs/ capacities	No. of Beneficiaries		Progress	Remarks on Issues of Progress
						Total	Female		
Chongkal	Literacy class	EDU	Education Office	\$850.00	2courses	50	35	100%	
Chongkal	Produce land use map	LUM	PDLMUCC	\$1,500.00	10maps	1,500	800	60%	
Chongkal	Dissemination of health care for women and baby	HEA	Health Center	\$700.00	8courses	240	190	100%	
Chongkal	Dissemination of land law	LUM	LMUCC Office	\$750.00	10courses	386	178	100%	
Chongkal	Diversity rice production	AGR	Agriculture Office	\$850.00	3courses	60	45	100%	
Chongkal	Training on vegetable crops technique	AGR	Agriculture Office	\$200.00	2courses	50	37	100%	

District	Project Name	Sector	Implementing Agency	Budget	Project outputs/ capacities	No. of Beneficiaries		Progress	Remarks on Issues of Progress
						Total	Female		
Chongkal	Dissemination of temple conservation law	CUL	Culture Office	\$450.00	7courses	258	187	100%	
Chongkal	Traffic law and public order dissemination	ADM	Police Inspection	\$450.00	7courses	257	118	100%	
Chongkal	Dissemination of children right	SOC	Social Affairs Office	\$400.00	6courses	215	135	100%	
Chongkal	Dissemination of gender concept	GEN	WA Office	\$600.00	11courses	404	321	100%	
Somrong	Literacy class	EDU	Education Office	\$1,200.00	2courses	50	35	40%	
Somrong	Primary health care for pregnant women	HEA	Health Center	\$250.00	5courses	250	200	100%	
Somrong	Dissemination on tuberculosis for villagers	HEA	Health Center	\$250.00	5courses	250	200	100%	
Somrong	Village veterinarian training	AGR	PDA	\$1,086.00	1course	15	8	100%	
Somrong	Diversity rice production	AGR	PDA	\$1,814.00	4courses	100	70	100%	
Somrong	Dissemination of fisheries law for villagers	AGR	Fishery Admin	\$200.00	4courses	100	50	100%	
Somrong	Dissemination of land use planning	LUM	LMUCC Office	\$450.00	5courses	300	200	0%	
Somrong	Dissemination of law of drug addiction used	SOC	Police Inspection	\$500.00	5courses	100	50	0%	
Somrong	Dissemination of law against domestic violence	GEN	WA Office	\$1,000.00	20courses	600	200	100%	

### 13.3 Inter Commune Council Projects in 2008 and 2009

#### 13.3.1 ICC Projects in 2008

*There are no ICC projects in this Province at this time*

#### 13.3.2 ICC Projects in 2009

*There are no ICC projects in this Province at this time*

**Source:** ICC project, Ministry of Interior (DoLA), -UNDP project for Local Governance – DDLG

## 13.4 Provincial Investment Fund (PIF) and District Investment Fund (DIF)

The PIF and DIF receive funding from a range of donors – PSSD, DANIDA, UNICEF, IFAD and CANADA. However in this section we only include the PIF and DIF projects funded by PSSD and DANIDA through NRML.

### 13.4.1 PIF and DIF 2008

NCDD Standard Outputs			Budget
Output Description	Unit	Quantity	
<b>Unit Title: Support to Contract Admin Unit</b>		<b>Unit Number: 22/CAU/08-01</b>	
CAU staff support costs	Month	12	\$ 10,200.00
Program administrative support	Month	12	\$ 26,726.92
Publicity	Month	12	\$ 4,204.00
Program meetings and workshops	Month	12	\$ 2,628.00
Training and capacity building by/for CAU	Person-Day	(20F+40M) X 2D	\$ 240.00
Contingencies			\$ 2,345.08
<b>Sub-total of unit</b>			<b>\$ 46,344.00</b>
<b>Unit Title: Support to Finance Unit</b>		<b>Unit Number: 22/FIN/08-00</b>	
Support to ExCom Finance staff	Month	12	\$ 4,320.00
Support to Provincial Treasury staff	Month	12	\$ 4,080.00
Training and capacity building by/for Finance staff	Person-Day	(18F+76M) X 12D	\$ 2,852.00
Contingencies			\$ 0.00
<b>Sub-total of unit</b>			<b>\$ 11,252.00</b>
<b>Unit Title: Support to Technical Support Unit</b>		<b>Unit Number: 22/TSU/08-01</b>	
Support to ExCom TSU	Month	12	\$ 11,474.00
Training and Capacity Building for ExCom TSU	Person-Day	(F+M) X 1D	\$ 184.00
Training and Capacity Building by ExCom TSU	Person-Day	(F+M) X 1D	\$ 595.00
Contingencies			\$ 0.00
<b>Sub-total of unit</b>			<b>\$ 12,253.00</b>
<b>Unit Title: Support to Project to Support Democratic Development through Decentralization and Deconcentration</b>		<b>Unit Number: 22/PSD/08-01</b>	
PSSD staff support costs	Month	12	\$ 22,585.00
Contingencies			\$ 0.00
<b>Sub-total of unit</b>			<b>\$ 22,585.00</b>
<b>Unit Title: Support to Local Administration Unit / PoLA</b>		<b>Unit Number: 22/LAU/08-01</b>	
Support to ExCom LAU	Month	12	\$ 20,040.00
Accountability Working Group	Month	12	\$ 299.00
NREM special activity cost	Month	2	\$ 0.00
Training and Capacity Building for ExCom LAU	Person-Day	(2F+24M) X 50D	\$ 6,499.34
Training and Capacity Building by ExCom LAU	Day	(24F+150M) X 10D	\$ 1,764.66
Contingencies			\$ 0.00
<b>Sub-total of unit</b>			<b>\$ 28,603.00</b>
<b>Contract Title: Rice production program</b>		<b>Contract Number: 22/AGR/0801-00</b>	
VLAs formation / support	Person	36	\$ 2,244.00
Agronomy demonstration (fruit tree, rice, vege, crop)	Demo or Site	5	\$ 320.00
Operational Support	Month / item	10	\$ 420.00
Evaluation	Report	1	\$ 52.50
Farmers trained on related agronomy extension techniques and demonstration.	Person-Day	(75F+75M) X 1D	\$ 2,103.50
Contingencies			\$ 0.00
<b>Sub-total of contract</b>			<b>\$ 5,140.00</b>
<b>Contract Title: Support to district initiative programe</b>		<b>Contract Number: 22/D03/0801-01</b>	
Office stationary and supplies	Per-month	12	\$ 5,932.60
Road construction/rehabilitation	Metre	800	\$ 8,000.00
NREM Education campaign	Event	1	\$ 920.82
Training courses in gender mainstreaming	Person-Day	(9F+25M) X 2D	\$ 108.76
Domestic violence prevention training	Person-Day	(100F+240M) X 12D	\$ 513.12
Land conflict resolution/awareness training	Person-Day	(120F+120M) X 8D	\$ 462.08
Farmers trained on related agronomy extension techniques and demonstration.	Person-Day	(140F+140M) X 8D	\$ 492.08
Teacher training	Person-Day	(30F+20M) X 189D	\$ 738.54
Contingencies			\$ 0.00
<b>Sub-total of contract</b>			<b>\$ 17,168.00</b>
<b>Contract Title: Support to district initiative programe</b>		<b>Contract Number: 22/D04/0801-00</b>	
Office stationary and supplies	Per-month	12	\$ 2,803.00
Road construction/rehabilitation	Metre	1000	\$ 8,437.00
Domestic violence prevention training	Person-Day	(300F+120M) X 14D	\$ 601.99

NCDD Standard Outputs			Budget
Output Description	Unit	Quantity	
Continuing health education	Person-Day	(375F+200M) X 31D	\$ 964.31
Farmers trained on related agronomy extension techniques and demonstration.	Person-Day	(55F+22M) X 15D	\$ 819.10
Land conflict resolution/awareness training	Person-Day	(200F+100M) X 10D	\$ 427.60
Contingencies			\$ 0.00
<b>Sub-total of contract</b>			<b>\$ 14,053.00</b>
<b>Contract Title: Effectiveness of Deminded Land Use</b>		<b>Contract Number: 22/LUM/0802-00</b>	
Land use plans process	Plan	1	\$ 0.00
Operational Support	Month / item	12	\$ 5,760.00
Evaluation	Report	1	\$ 0.00
Contingencies			\$ 0.00
<b>Sub-total of contract</b>			<b>\$ 5,760.00</b>
<b>Contract Title: Planning Sector Capacity Building and Formulation</b>		<b>Contract Number: 22/PLA/0801-01</b>	
Provincial Development Plan	PDP	1	\$ 397.50
Operational Support	Month / item	12	\$ 1,145.00
Monitoring	Person-Day	60	\$ 400.00
Evaluation	Report	1	\$ 40.00
Commune database	Data book	1200	\$ 1,130.00
District Integration	Workshop	1	\$ 825.00
Training on planning	Person-Day	(F+M) X 1D	\$ 1,403.00
Contingencies			\$ 59.50
<b>Sub-total of contract</b>			<b>\$ 5,400.00</b>
<b>Contract Title: Rural maintenance</b>		<b>Contract Number: 22/RRD/0801-00</b>	
Routine Maintenance	Metre	1250	\$ 1,845.00
Monitoring	Person-Day	22	\$ 110.00
Evaluation	Report	1	\$ 45.00
Contingencies			\$ 0.00
<b>Sub-total of contract</b>			<b>\$ 2,000.00</b>
<b>Contract Title: Prevention against child sex in tourism</b>		<b>Contract Number: 22/TOU/0801-00</b>	
Operational Support	Month / item	5	\$ 120.00
Evaluation	Report	1	\$ 40.00
Training on Tourism	Person-Day	(500F+380M) X 22D	\$ 940.00
Contingencies			\$ 0.00
<b>Sub-total of contract</b>			<b>\$ 1,100.00</b>
<b>Contract Title: Irrigation system rehabilitation</b>		<b>Contract Number: 22/WRM/0801-00</b>	
Water control structures	Structure	1	\$ 19,540.00
Operational Support	Month / item	12	\$ 1,195.00
Evaluation	Report	1	\$ 60.00
Contingencies			\$ 100.00
<b>Sub-total of contract</b>			<b>\$ 20,895.00</b>
<b>GRAND TOTAL</b>			<b>\$ 192,553.00</b>

**Note:** M= Male, F= Female, D=day

### 13.4.2 PIF and DIF Projects for 2009

NCDD Standard Outputs			Budget
Output Description	Unit	Quantity	
<b>Unit Title: Support to Contract Admin Unit</b>		<b>Unit Number: 22/CAU/09-00</b>	
CAU staff support costs	Month	12	\$ 11,040.00
Program administrative support	Month	12	\$ 16,660.00
Publicity	Month	2	\$ 2,230.00
Program meetings and workshops	Month	12	\$ 5,370.00
Training and capacity building by/for CAU	Person-Day	(3F+20M) X 1D	\$ 390.00
Contingencies			\$ 721.00
<b>Sub-total of unit</b>			<b>\$ 36,411.00</b>
<b>Unit Title: Support to Finance Unit</b>		<b>Unit Number: 22/FIN/09-00</b>	
Support to ExCom Finance staff	Month	12	\$ 4,320.00
Support to Provincial Treasury staff	Month	12	\$ 4,080.00
Training and capacity building by/for Finance staff	Person-Day	(7F+204M) X 10D	\$ 2,840.00
Contingencies			\$ 0.00
<b>Sub-total of unit</b>			<b>\$ 11,240.00</b>
<b>Unit Title: Support to Technical Support Unit</b>		<b>Unit Number: 22/TSU/09-00</b>	
Support to ExCom TSU	Month	12	\$ 10,920.00
Training and Capacity Building for ExCom TSU	Person-Day	(60F+60M) X 1D	\$ 1,526.00
Training and Capacity Building by ExCom TSU	Person-Day	(100F+120M) X 1D	\$ 902.00
Contingencies			\$ 0.00
<b>Sub-total of unit</b>			<b>\$ 13,348.00</b>
<b>Unit Title: Support to Project to Support Democratic Development through Decentralization and Deconcentration</b>		<b>Unit Number: 22/PSD/09-00</b>	
PSDD staff support costs	Month	6	\$ 20,643.00



NCDD Standard Outputs			Budget
Output Description	Unit	Quantity	
Contingencies			\$ 0.00
<b>Sub-total of unit</b>			<b>\$ 20,643.00</b>
<b>Unit Title: Support to Local Administration Unit / PoLA</b>		<b>Unit Number: 22/LAU/09-00</b>	
Support to ExCom LAU	Month	12	\$ 24,141.00
Accountability Working Group	Month	12	\$ 580.00
NREM special activity cost	Month	12	\$ 395.00
Organise C/S Council Congress	Congress	1	\$ 1,725.00
Training and Capacity Building for ExCom LAU	Person-Day	(12F+59M) X 15D	\$ 5,090.00
Training and Capacity Building by ExCom LAU	Day	(148F+512M) X 20D	\$ 5,709.00
Contingencies			\$ 0.00
<b>Sub-total of unit</b>			<b>\$ 37,640.00</b>
<b>Contract Title: Foodsesty</b>		<b>Contract Number: 22/AGR/0901-00</b>	
Agronomy demonstration (fruit tree, rice, vege, crop)	Demo or Site	5	\$ 2,172.00
Operational Support	Month / item	12	\$ 300.00
Evaluation	Report	1	\$ 99.05
Monitoring	Person-Day	26	\$ 160.00
Farmers trained on related agronomy extension techniques and demonstration.	Person-Day	(75F+75M) X 5D	\$ 690.00
Selected outstanding farmers trained to be VLAs.	Person-Day	(F+M) X 1D	\$ 1,580.00
Farmers trained on related AH and P extension techniques and demonstration.	Person-Day	(F+M) X 1D	\$ 1,925.00
Contingencies			\$ 0.00
<b>Sub-total of contract</b>			<b>\$ 6,926.05</b>
<b>Contract Title: Local Culture troupe establishment</b>		<b>Contract Number: 22/CUL/0901-00</b>	
Monitoring	Person-Day	10	\$ 81.00
Evaluation	Report	1	\$ 90.00
Cultural training for local performers	Person-Day	(15F+10M) X 80D	\$ 1,390.00
Contingencies			\$ 0.00
<b>Sub-total of contract</b>			<b>\$ 1,561.00</b>
<b>Contract Title: Support to District initiative Project</b>		<b>Contract Number: 22/D03/0901-00</b>	
Office stationary and supplies	Per-month	12	\$ 6,495.00
Road construction/rehabilitation	Metre	1700	\$ 20,250.00
Evaluation of district subcontract	Workshop	1	\$ 100.00
NFE classes	Class (25 students)	2	\$ 850.00
Monitoring of projects and activities	Person-day	55	\$ 275.00
Land use maps	Map	10	\$ 1,500.00
Farmers trained on related agronomy extension techniques and demonstration.	Person-Day	(70F+30M) X 9D	\$ 1,050.00
Continuing health education	Person-Day	(190F+50M) X 8D	\$ 700.00
Land conflict resolution/awareness training	Person-Day	(200F+100M) X 12D	\$ 750.00
NREM awareness and education	Person-Day	(105F+105M) X 7D	\$ 450.00
Training on procedures of penalty	Person-Day	(105F+105M) X 6D	\$ 450.00
Training courses in gender mainstreaming	Person-Day	(304F+385M) X 7D	\$ 600.00
Training on child and women rights	Person-Day	(100F+50M) X 6D	\$ 400.00
Training on planning	Person-Day	(7F+28M) X 1D	\$ 930.00
Contingencies			\$ 0.00
<b>Sub-total of contract</b>			<b>\$ 34,800.00</b>
<b>Contract Title: Support to district initiative project</b>		<b>Contract Number: 22/D04/0901-00</b>	
Road construction/rehabilitation	Metre	1500	\$ 11,000.00
Water control structures	Structure	1	\$ 9,250.00
Office stationary and supplies	Per-month	12	\$ 3,311.30
Monitoring of projects and activities	Person-day	126	\$ 275.00
Evaluation of district subcontract	Workshop	1	\$ 100.00
NFE classes	Class (25 students)	2	\$ 1,200.00
Continuing health education	Person-Day	(400F+100M) X 20D	\$ 500.00
Farmers trained on related AH and P extension techniques and demonstration.	Person-Day	(5F+10M) X 17D	\$ 1,086.00
Fisheries law awareness education	Person-Day	(50F+50M) X 1D	\$ 200.00
Land conflict resolution/awareness training	Person-Day	(159F+162M) X 5D	\$ 450.00
Training on social security	Person-Day	(175F+75M) X 5D	\$ 500.00
Training on planning	Person-Day	(6F+23M) X 1D	\$ 1,000.00
Domestic violence prevention training	Person-Day	(200F+400M) X 20D	\$ 1,000.00
Farmers trained on related agronomy extension techniques and demonstration.	Person-Day	(70F+30M) X 20D	\$ 1,814.00
Contingencies			\$ 0.00
<b>Sub-total of contract</b>			<b>\$ 31,686.30</b>
<b>Contract Title: Land law and Administration Education</b>		<b>Contract Number: 22/LUM/0901-00</b>	
Operational Support	Month / item	1	\$ 250.00

NCDD Standard Outputs			Budget
Output Description	Unit	Quantity	
Evaluation	Report	1	\$ 112.00
Monitoring	Person-Day	10	\$ 180.00
Land conflict resolution/awareness training	Person-Day	(490F+490M) X 3D	\$ 2,580.00
Contingencies			\$ 0.00
<b>Sub-total of contract</b>			<b>\$ 3,122.00</b>
<b>Contract Title: dfbhd</b>		<b>Contract Number: 22/LUM/0902-00</b>	
Land use plans process	Plan	1	\$ 1,095.00
Monitoring	Person-Day	24	\$ 200.00
Evaluation	Report	1	\$ 105.00
Operational Support	Month / item	12	\$ 5,760.00
Contingencies			\$ 0.00
<b>Sub-total of contract</b>			<b>\$ 7,160.00</b>
<b>Contract Title: Environmental awareness</b>		<b>Contract Number: 22/NRM/0901-00</b>	
Monitoring	Person-Day	15	\$ 150.00
Evaluation	Report	1	\$ 93.00
Residue management	Community/Place/Garbage	1	\$ 5,000.00
NREM awareness and education	Person-Day	(200F+90M) X 4D	\$ 940.00
Contingencies			\$ 0.00
<b>Sub-total of contract</b>			<b>\$ 6,183.00</b>
<b>Contract Title: Planning Sector Capacity Building and Formulation</b>		<b>Contract Number: 22/PLA/0901-00</b>	
Seila Annual Workplan and Budget	SAWB	1	\$ 295.00
District Integration	Workshop	5	\$ 921.00
Commune database	Data book	80	\$ 640.00
Monitoring	Person-Day	40	\$ 375.00
Operational Support	Month / item	12	\$ 1,630.00
Provincial Development Investment Plan	PDIP	1	\$ 1,080.00
Evaluation	Report	1	\$ 100.00
Provincial Development Plan	PDP	1	\$ 320.00
Contingencies			\$ 39.00
<b>Sub-total of contract</b>			<b>\$ 5,400.00</b>
<b>Contract Title: Promote Women and Children Rights</b>		<b>Contract Number: 22/SOC/0901-00</b>	
Monitoring	Person-Day	12	\$ 160.00
Evaluation	Report	1	\$ 119.00
Training on child and women rights	Person-Day	(235F+165M) X 1D	\$ 1,060.00
Contingencies			\$ 0.00
<b>Sub-total of contract</b>			<b>\$ 1,339.00</b>
<b>Contract Title: Education on Law of Labor</b>		<b>Contract Number: 22/SOC/0902-00</b>	
Evaluation	Report	1	\$ 143.50
Monitoring	Person-Day	24	\$ 30.00
Training on child and women rights	Person-Day	(200F+200M) X 1D	\$ 2,287.50
Contingencies			\$ 0.00
<b>Sub-total of contract</b>			<b>\$ 2,461.00</b>
<b>Contract Title: Prevention child sex exploitation in Tourism</b>		<b>Contract Number: 22/TOU/0901-00</b>	
Operational Support	Month / item	1	\$ 2,362.00
Monitoring	Person-day	20	\$ 75.00
Evaluation	Report	1	\$ 83.00
Training on Tourism	Person-Day	(100F+100M) X 1D	\$ 802.00
Contingencies			\$ 0.00
<b>Sub-total of contract</b>			<b>\$ 3,322.00</b>
<b>Contract Title: Improve irrigation system</b>		<b>Contract Number: 22/WRM/0901-00</b>	
Water control structures	Structure	2	\$ 8,349.26
Farmer water user community	Group	1	\$ 1,353.00
Operational Support	Month / item	10	\$ 1,272.30
Monitoring	Person-Day	11	\$ 75.00
Evaluation	Report	1	\$ 62.00
Capacity building provided on water resources management	Person-Day	(500F+500M) X 24D	\$ 486.69
Contingencies			\$ -0.00
<b>Sub-total of contract</b>			<b>\$ 11,598.25</b>
<b>GRAND TOTAL</b>			<b>\$ 234,840.60</b>

Note: M= Male, F= Female, D=day

## 13.5 Other projects in the Province

### 13.5.1 Rural Poverty Reduction Program (RPRP)

*There are no RPRP projects being implemented in this district or province at this time. The RPRP is only being implemented in Svay Rieng and Prey Veng*

#### 13.5.1.1 RPRP Projects from 2006 to 2008

*No RPRP projects in this province at this time*

#### 13.5.1.2 RPRP Projects in 2009

*No RPRP projects in this province at this time*

### 13.5.2 Seth Korma 2007 to 2009

#### 13.5.2.1 Seth Koma 2007 Estimated Expenditure and Outputs in 2007

Description of Outputs/Activities	Budget (1 US\$ = 4000 Riels)
1.1 Monthly CCWC meeting	\$1,008
1.2 Quarterly CCWC meeting	\$658
1.3 Operation support cost	\$3,600
1.4 Village meeting on Child Rights and child protection	\$693
1.5 Village meeting on Immunization, health issues	\$693
1.6 village meeting on Education	\$693
1.7 Incentive CPS teachers for 10 months	\$10,050
1.8 Monitoring the functioning of CPS classes	\$536
1.9 Awareness raising on women and child rights	\$4,800
<b>GRAND TOTAL</b>	<b>\$22,731</b>

Source: UNICEF

#### 13.5.2.2 Seth Koma 2008 Estimate Expenditure and Outputs in 2008

Description of Outputs/Activities	Budget (1 US\$ = 4000 Riels)
Community able to identify and articulate critical development needs for children.	
CCWC monthly meetings (24 Communes)	\$1,008
CCWC quarterly meetings (24 Communes)	\$462
Operational support (24 Communes)	\$3,600
Village meeting on child rights and child protection (24 Communes)	\$693
Village meeting on health issues (24 Communes)	\$693
Village meeting on education (24 Communes)	\$693
Incentive for CPS teachers (22 Communes)	\$10,050
Monitoring the functioning of CPS classes (22 Communes)	\$536
Campaign on woman and child right (24 Communes)	\$4,800
<b>Sub-total for all outputs</b>	<b>\$22,535</b>
<b>Contingency cost</b>	<b>\$196</b>
<b>GRAND TOTAL</b>	<b>\$22,731</b>

Source: UNICEF

**13.5.2.4 Seth Koma 2009 Budget and planned Outputs**

Description		Anlong Veang	Banteay Ampil	Chong Kal	Trapeang Prasat	Samraong	Total	
# Comm.		5	4	4	6	5	24	
# Village		47	74	25	38	47	231	
Activity and budget	Ope. costs CCWC	Comm.	5	4	4	6	5	24
		Budget	\$1,000	\$800	\$800	\$1,200	\$1,000	\$4,800
	CPS	Village	27	10	25	28	13	103
		Budget	\$3,645	\$1,314	\$3,375	\$3,780	\$1,755	\$13,869
	Parenting Education	Village	47	10	25	38	17	137
		Budget	\$2,961	\$630	\$1,806	\$2,934	\$1,071	\$9,402
	CLTS	Village	0	27	0	0	13	40
		Budget	\$0	\$7,365	\$0	\$0	\$3,079	\$10,444
	PHAST	Village	0	15	4	0	0	19
		Budget	\$0	\$3,095	\$731	\$0	\$0	\$3,826
	Special health intervention	Support MMR	5	4	4	6	5	24
		Budget	\$1,000	\$800	\$800	\$1,200	\$1,000	\$4,800
	Outreach	Comm	1	1	0	1	0	3
		Budget	\$504	\$1,512	\$0	\$756	\$0	\$2,772
Discretionary Fund	Comm.	1	1	0	1	0	3	
	Budget	\$500	\$500	\$0	\$500	\$0	\$1,500	
Village Mapping		\$66	\$162	\$0	\$81	\$0	\$309	
<b>Total</b>		<b>\$9,676</b>	<b>\$16,178</b>	<b>\$7,512</b>	<b>\$10,451</b>	<b>\$7,905</b>	<b>\$51,722</b>	

Source: UNICEF

# **SECTION D: SERVICES AND ORGANIZATIONS**



## 14 Infrastructure

### 14.1 Lengths of and Expenditure on Roads in 2008 by District

Roads	OMC	Anlong Veng	Banteay Ampil	Chongkal	Samrong	Trapeang Prssath
Length of paved road in the district	108	40	0	0	30	38
Length of unpaved roads in the district	259	18	12	39	190	0
Amount spent on construction of roads in 2008	555,074	37,043	34,838	41,613	400,276	41,305
Amount spent on repair and rehabilitation of roads in 2008	1,172,373	36,089	26,172	92,693	1,017,419	0

**Note 1:** Please note that these data are not necessarily complete or correct. The data are derived from government agencies at provincial and district level which used different recording systems, did not always have complete data or were, sometimes, less than willing to share their data.

**Note 2:** Please be aware that these data are incomplete due to the fact that the amounts for the construction, repair and rehabilitation recorded reflect only funds provided by the government, not the contributions by any other parties.

### 14.2 Scale of and Expenditure on Irrigation in 2008 by District

Irrigation	OMC	Anlong Veng	Banteay Ampil	Chongkal	Samrong	Trapeang Prssath
Number of irrigation schemes operating in 2008	9	3	2	2	2	n/a
Total nr of hectares under irrigation in dry season 2008	450	140	100	110	100	n/a
Total funds spent in 2008 on construction of irrigation systems	626,708	278,695	198,881	73,660	75,471	n/a
Total funds spent in 2008 on rehabilitation/repair of irrigation systems	18,530	9,400	3,500	2,530	3,100	n/a
Total funds spent in 2008 on operation and maintenance	645,238	288,095	202,381	76,190	78,571	n/a

**Note 1:** Please note that these data are not necessarily complete or correct. The data are derived from government agencies at provincial and district level which used different recording systems, did not always have complete data or were, sometimes, less than willing to share their data.

**Note 2:** Please be aware that the data above are incomplete as these only reflect funds provided by the government, not the contributions by farmers or other parties.

### 14.3 Power Supply in 2008 by District

Electricity	OMC	Anlong Veng	Banteay Ampil	Chongkal	Samrong	Trapeang Prssath
Total number of electricity connections to households	3,503	950	n/a	305	2,043	205
Total number of electricity connections to agencies, companies, organizations	86	10	n/a	7	66	3
Total volume in KWh of electricity consumed last in 2008	9,901,263	90,455	n/a	16,115	9,785,880	8,813
Total amount collected from users for consumed electricity	2,941,229	43,074	n/a	7,674	2,886,285	4,197
Per capita electricity consumption in 2008 in Kwh	256	3	n/a	1	167	0

**Note 1:** Please note that these data are not necessarily complete or correct. The data are derived from government agencies at provincial and district level which used different recording systems, did not always have complete data or were, sometimes, less than willing to share their data.

**Note 2:** These data only record electricity provided by electricity companies and does not include homes powered by generators or batteries (for this information see Section B: General Profile, Part 1: General Information; table 1.3.1 and chart 1.3.4).

**Note 3:** In most provinces electricity is only provided through town-based networks

**Note 4:** Per capita consumption is calculated by dividing the total volume of electricity produced in 2008 by the number of people living in each district as per the 2008 census (for the provincial data it is calculated against the number of people living in the province)

## 15 Health Facilities

Please note that the Operational District (health) boundaries are different from the administrative district boundaries. Therefore the data provided here show the facilities, staff, NGOs etc in each Operational District within the province NOT the usual administrative district.

### Acronyms

<b>Com Cov</b>	Commune Covered	<b>MW2</b>	Secondary Midwives
<b>CPA</b>	Complementary Package of Activities	<b>NU1</b>	Primary Nurse
<b>Dr</b>	Doctor	<b>NU2</b>	Secondary Nurse
<b>FDH</b>	Former District Hospital	<b>OD</b>	Operational District
<b>HC</b>	Health Center	<b>Others</b>	Other Staffs
<b>HC (NB)</b>	Health Center no building	<b>PHD</b>	Provincial Health Department
<b>HP</b>	Health Post	<b>Pop 04-05</b>	Population Covered 2004 or 2005
<b>MA</b>	Medical Assistant	<b>RH</b>	Referral Hospital
<b>MPA</b>	Minimum Package of Activities	<b>Vil Cov</b>	Village Covered
<b>MW1</b>	Primary Midwives	<b>VIL-HC</b>	Distance from Village to Health Center

### 15.1 Health Facilities by Operational District

Otdar Mean Chey	OD	RH	HC	HP
Samraong	1	1	14	
<b>Total</b>	<b>1</b>	<b>1</b>	<b>14</b>	<b>0</b>



## 15.2 Health Facilities and Staff by Operational District, 2008

This table shows health facilities, number of staff by type and coverage of health facilities in each operational district.

No	Facility Name	Type	Class	Dr	Ma	Nu2	Nu1	Mw2	Mw1	Others	Com Cov	Vil Cov	Pop. 04-05
<b>Samraong</b>													
1	Ampil	FDH	MPA	0	0	5	7	0	2	2	1	23	10,203
2	Anlong Veang	FDH	MPA	2	1	15	20	1	1	5	4	36	19,883
3	Beng	HC	None MPA	0	0	1	10	0	0	3	1	16	8,657
4	Bos Sbov	HC	MPA	0	0	1	1	1	0	2	1	7	3,098
5	Chong Kal	FDH	MPA	0	0	4	5	0	3	3	2	14	11,068
6	Kaun Kriel	HC	MPA	0	0	1	2	0	0	3	4	23	12,379
7	Kouk Khpos	HC	MPA	0	0	1	10	0	0	3	3	19	7,599
8	Kouk Mon	HC	MPA	0	0	1	2	2	1	4	3	12	7,660
9	Ou Smach	HC	MPA	0	1	1	2	0	0	2	2	9	6,735
10	Pongro Ta Paen	HC	None MPA	0	0	4	5	0	3	3	2	10	7,141
11	Samraong	HC	MPA	0	0	1	1	0	1	3	3	20	19,310
12	Trapeang Prasat	HC	MPA	0	0	3	5	0	1	1	2	14	8,223
13	Trapeang Prei	HC	MPA	0	0	3	2	0	1	3	2	16	6,599
<b>Total:</b>				<b>2</b>	<b>2</b>	<b>41</b>	<b>72</b>	<b>4</b>	<b>13</b>	<b>37</b>	<b>30</b>	<b>219</b>	<b>128,555</b>

Source: MEDiCAM

## 15.3 Deliveries in 2007, by Operational District

OD	Deliveries	Deliveries at home		Deliveries	Total deliveries	Total deliveries
	at HC	By Health Staff	ByTBAs	at RH	by Health Staff	by health staff and TBAs
Samraong	1330	310	1310	209	1849	3159
<i>Sub-total</i>	<i>1330</i>	<i>310</i>	<i>1310</i>	<i>209</i>	<i>1849</i>	<i>3159</i>

Source: MoH, Annual Statistics 2007

## **15.4 Major Health NGOs active in the Province, by Operational District**

### **Operational District: Samraong**

#### **CARE (CARE International in Cambodia)**

Phone: 023215267, Email: care.cam@care-cambodia.org, Contact Person: Sek Sisokhom

#### **CHHRA (Cambodia Health and Human Rights Alliance)**

Phone: , Email: 012753497@mobilnet.com.kh, Contact Person: Som Sopheap

#### **CRF (Croix-Rouge Française)**

Phone: 023212945, Email: crf-cambodge@everyday.com.kh, Contact Person: Anne Lopez Schweighofer

#### **FHI/IMPACT (Family Health International/Impact)**

Phone: 023211914, Email: info@fhi.org.kh, Contact Person: Song Ngak

#### **FRC (French Red Cross)**

Phone: 023883670, Email: crf-cambodia@everyday.com.kh, Contact Person: Marie Helene Meaux Boko

#### **IRIS (International Resources for the Improvement of Sight)**

Phone: 023994114, Email: iriscambodia@online.com.kh, Contact Person: Rosham Bista

#### **MHD (Malteser Germany)**

Phone: 012200564, Email: malteser.srg@gmail.com, Contact Person: Sandra Harlass

#### **MSF-B (Médecins Sans Frontières - Belgium)**

Phone: 023880334, Email: MSFB-Phnom-Penh@brussels.msf.org, Contact Person: Philippe Berneau

#### **RCEDO (Rural Community and Environment Development Organisation)**

Phone: 054958942, Email: rcedobmc@forum.org.kh, Contact Person: Sam Sereywathana

#### **UNFPA (United Nations Population Fund)**

Phone: 023215519, Email: may@unfpa.org, Contact Person: Sok Sokun

#### **VSO (Voluntary Service Overseas(UK))**

Phone: 023365380, Email: Helen.bradford@vsoint.org, Contact Person: Helen Bradford

#### **WB (The World Bank)**

Phone: 023217301, Email: lhawkins@worldbank.org, Contact Person: Simth Beng

#### **WFP (World Food Program)**

Phone: 023212137, Email: mory.heng@wfp.org, Contact Person: Heng Mory

#### **WOMEN (Woman Organization for Modern Economy and Nursing)**

Phone: 023884271, Email: women@camnet.com.kh, Contact Person: Che Sarith

### **Operational District: Unknown**

#### **AAR-J (Association for Aid and Relief, Japan)**

Phone: 063964918, Email: aar.sr@bigpond.com.kh, Contact Person: Soeurn Thab

## 16 Education<sup>2</sup>

### 16.1 Schools, Classes, Students and Staff in 2007/2008

District	Number of Schools	Disadv. Schools	Number of Classes	Classes in Pagoda	Enrollment		Repeaters		Teaching Staff		Non-Teaching Staff		Total Staff	
					Total	Girl	Total	Girl	Total	Female	Total	Female	Total	Female
Anlong Veang	30	1	240	0	9,036	4,165	947	419	151	35	25	5	176	40
Banteay Ampil	59	6	345	0	11,417	5,216	1,596	731	229	24	40	1	269	25
Chong Kal	31	1	174	0	6,019	2,956	706	298	124	31	26	5	150	36
Samraong	42	0	314	0	12,155	5,725	1,269	527	229	80	39	7	268	87
Trapeang Prasat	27	4	197	0	6,522	2,966	788	347	127	31	27	2	154	33
<b>Whole Province</b>	<b>189</b>	<b>12</b>	<b>1,270</b>	<b>0</b>	<b>45,149</b>	<b>21,028</b>	<b>5,306</b>	<b>2,322</b>	<b>860</b>	<b>201</b>	<b>157</b>	<b>20</b>	<b>1,017</b>	<b>221</b>
- Urban Area	42	0	314	0	12,155	5,725	1,269	527	229	80	39	7	268	87
- Rural Area	117	11	716	0	23,958	11,138	3,090	1,376	480	86	93	8	573	94
- Remote Area	30	1	240	0	9,036	4,165	947	419	151	35	25	5	176	40

### 16.2 Characteristics of Schools and School Principals in 2007/2008

District	Number of Schools				2 - Shift Schools	Floating Schools	Schools in Pagoda	Attached Pre-Sch.	Schools Without		Characteristics of School Principals (Incharge)			
	Pre-Sch.	Primary	College	Lycee					Water Sup.	Toilet	Avg. Age	Avg. Service	U.Sec+ Ed.	Female
Anlong Veang	1	25	3	1	24	0	0	1	7	5	37.2	9.7	6	0
Banteay Ampil	2	53	3	1	45	0	2	2	32	31	44.6	20.1	2	0
Chong Kal	5	22	4	0	22	0	0	5	13	14	38.7	12.7	7	0
Samraong	3	33	5	1	32	0	2	3	13	9	39.4	15.9	3	2
Trapeang Prasat	3	22	1	1	21	0	0	3	6	7	42.6	8.5	1	0
<b>Whole Province</b>	<b>14</b>	<b>155</b>	<b>16</b>	<b>4</b>	<b>144</b>	<b>0</b>	<b>4</b>	<b>14</b>	<b>71</b>	<b>66</b>	<b>41.0</b>	<b>14.7</b>	<b>19</b>	<b>2</b>
- Urban Area	3	33	5	1	32	0	2	3	13	9	39.4	15.9	3	2
- Rural Area	10	97	8	2	88	0	2	10	51	52	42.6	15.5	10	0
- Remote Area	1	25	3	1	24	0	0	1	7	5	37.2	9.7	6	0

<sup>2</sup> All the data for section 12 comes from the Ministry of Education, Youth and Sport (MoEYS)

### 16.3 Enrollment by Level of Education, 2006/2007

District	Number of Schools	Pre-school		Primary		Lower Sec.		Upper Sec.		Total		% Female	
		Total	Girl	Total	Girl	Total	Girl	Total	Girl	Total	Girl	Primary	All Level
Anlong Veang	28	63	34	7,370	3,413	1,110	479	179	55	8,722	3,981	46.3	45.6
Banteay Ampil	56	60	26	10,679	4,965	1,486	564	0	0	12,225	5,555	46.5	45.4
Chong Kal	31	157	80	5,577	2,663	766	363	0	0	6,500	3,106	47.7	47.8
Samraong	41	118	64	9,226	4,474	1,741	803	725	259	11,810	5,600	48.5	47.4
Trapeang Prasat	25	119	45	5,452	2,511	573	254	0	0	6,144	2,810	46.1	45.7
<b>Whole Province</b>	<b>181</b>	<b>517</b>	<b>249</b>	<b>38,304</b>	<b>18,026</b>	<b>5,676</b>	<b>2,463</b>	<b>904</b>	<b>314</b>	<b>45,401</b>	<b>21,052</b>	<b>47.1</b>	<b>46.4</b>
- Urban Area	41	118	64	9,226	4,474	1,741	803	725	259	11,810	5,600	48.5	47.4
- Rural Area	112	336	151	21,708	10,139	2,825	1,181	0	0	24,869	11,471	46.7	46.1
- Remote Area	28	63	34	7,370	3,413	1,110	479	179	55	8,722	3,981	46.3	45.6

### 16.4 Enrollment by Level of Education 2007/2008

District	Number of Schools	Pre-school		Primary		Lower Sec.		Upper Sec.		Total		% Female	
		Total	Girl	Total	Girl	Total	Girl	Total	Girl	Total	Girl	Primary	All Level
Anlong Veang	30	44	23	7,165	3,307	1,556	750	271	85	9,036	4,165	46.2	46.1
Banteay Ampil	59	59	19	9,772	4,519	1,477	640	109	38	11,417	5,216	46.2	45.7
Chong Kal	31	123	61	4,989	2,444	907	451	0	0	6,019	2,956	49.0	49.1
Samraong	42	239	122	9,292	4,430	1,770	873	854	300	12,155	5,725	47.7	47.1
Trapeang Prasat	27	120	58	5,597	2,561	731	327	74	20	6,522	2,966	45.8	45.5
<b>Whole Province</b>	<b>189</b>	<b>585</b>	<b>283</b>	<b>36,815</b>	<b>17,261</b>	<b>6,441</b>	<b>3,041</b>	<b>1,308</b>	<b>443</b>	<b>45,149</b>	<b>21,028</b>	<b>46.9</b>	<b>46.6</b>
- Urban Area	42	239	122	9,292	4,430	1,770	873	854	300	12,155	5,725	47.7	47.1
- Rural Area	117	302	138	20,358	9,524	3,115	1,418	183	58	23,958	11,138	46.8	46.5
- Remote Area	30	44	23	7,165	3,307	1,556	750	271	85	9,036	4,165	46.2	46.1

### 16.5 New Intake and Enrollment by Level and Age (Both Sexes), 2007/2008

District	Grade 1 Intake		Primary Enrollment		Grade 7 Intake		L. Sec. Enrollment		Grade 10 Intake		U. Sec. Enrollment		% Over-age Enrollment in		
	Total	Aged 6	Total	Aged 11+	Total	Aged 12	Total	Aged 14+	Total	Aged 15	Total	Aged 17+	Primary	L. Sec.	U. Sec.
Anlong Veang	1,485	806	7,165	2,343	716	84	1,556	932	148	10	271	170	32.7	59.9	62.7
Banteay Ampil	1,577	1,056	9,772	2,799	589	115	1,477	799	108	25	109	45	28.6	54.1	41.3
Chong Kal	761	544	4,989	1,371	402	60	907	552	0	0	0	0	27.5	60.9	0.0
Samraong	1,819	932	9,292	2,751	710	109	1,770	1,081	374	36	854	614	29.6	61.1	71.9
Trapeang Prasat	1,154	588	5,597	1,811	316	40	731	467	74	6	74	41	32.4	63.9	55.4
<b>Whole Province</b>	<b>6,796</b>	<b>3,926</b>	<b>36,815</b>	<b>11,075</b>	<b>2,733</b>	<b>408</b>	<b>6,441</b>	<b>3,831</b>	<b>704</b>	<b>77</b>	<b>1,308</b>	<b>870</b>	<b>30.1</b>	<b>59.5</b>	<b>66.5</b>
- Urban Area	1,819	932	9,292	2,751	710	109	1,770	1,081	374	36	854	614	29.6	61.1	71.9
- Rural Area	3,492	2,188	20,358	5,981	1,307	215	3,115	1,818	182	31	183	86	29.4	58.4	47.0
- Remote Area	1,485	806	7,165	2,343	716	84	1,556	932	148	10	271	170	32.7	59.9	62.7

### 16.6 Condition of School Buildings, 2007/2008

District	Total Number of		Concrete/Brick Structure		Wooden Structure		Bamboo Structure		New Buildings		Buildings Without Good		
	Buildings	Rooms	Buildings	Rooms	Buildings	Rooms	Buildings	Rooms	Repaired	Constructed	Floor	Roof	Wall
Anlong Veang	53	209	28	153	15	41	10	15	5	10	7	9	11
Banteay Ampil	96	306	34	158	58	141	4	7	5	19	45	32	38
Chong Kal	45	156	31	126	11	26	3	4	4	7	18	8	17
Samraong	64	270	47	231	15	37	2	2	1	11	10	6	9
Trapeang Prasat	48	155	18	91	12	39	18	25	6	2	25	22	23
<b>Whole Province</b>	<b>306</b>	<b>1,096</b>	<b>158</b>	<b>759</b>	<b>111</b>	<b>284</b>	<b>37</b>	<b>53</b>	<b>21</b>	<b>49</b>	<b>105</b>	<b>77</b>	<b>98</b>
- Urban Area	64	270	47	231	15	37	2	2	1	11	10	6	9
- Rural Area	189	617	83	375	81	206	25	36	15	28	88	62	78
- Remote Area	53	209	28	153	15	41	10	15	5	10	7	9	11

### 16.7 Condition of Classrooms and Existence of Separate School Office and Library, 2007/2008

District	Number of Classrooms	Number of Classrooms			Classrooms Without Good			Number of furniture needed				Schools with Separate	
		in Pagoda	Repaired	New Constr.	Floor	Roof	Wall	Desks	Chairs	Blk.board	Tchr.Table	Office	Library
Anlong Veang	170	0	10	32	12	16	18	828	631	32	39	16	8
Banteay Ampil	251	0	12	82	83	59	88	746	579	53	90	18	5
Chong Kal	117	0	8	29	53	20	41	142	188	18	43	9	3
Samraong	197	0	4	47	38	21	28	115	120	18	24	12	5
Trapeang Prasat	129	0	13	11	45	34	40	587	587	37	49	12	3
<b>Whole Province</b>	<b>864</b>	<b>0</b>	<b>47</b>	<b>201</b>	<b>231</b>	<b>150</b>	<b>215</b>	<b>2,418</b>	<b>2,105</b>	<b>158</b>	<b>245</b>	<b>67</b>	<b>24</b>
- Urban Area	197	0	4	47	38	21	28	115	120	18	24	12	5
- Rural Area	497	0	33	122	181	113	169	1,475	1,354	108	182	39	11
- Remote Area	170	0	10	32	12	16	18	828	631	32	39	16	8

### 16.8 Community Participation and Financing, 2007/2008

District	Parent Association				Comm. Teachers	Teaching Monks	PAP Fund (Riel)		Number of Schools Obtaining Funds from				
	Exists	Held Meet.	Total	Female			per Student	per School	Sch. Income	Community	Gvt. For building	Abroad	IOs/ NGOs
Anlong Veang	29	26	4	1	0	0	8,593	2,934,952	2	9	0	2	0
Banteay Ampil	54	53	5	1	0	0	9,256	2,072,190	0	0	0	0	0
Chong Kal	27	27	5	1	0	0	8,907	2,138,333	0	3	0	3	4
Samraong	38	36	5	1	0	0	9,907	3,015,685	1	3	0	0	0
Trapeang Prasat	26	26	5	1	0	0	8,147	1,927,900	1	6	0	0	1
<b>Whole Province</b>	<b>174</b>	<b>168</b>	<b>5</b>	<b>1</b>	<b>0</b>	<b>0</b>	<b>9,097</b>	<b>2,413,837</b>	<b>4</b>	<b>21</b>	<b>0</b>	<b>5</b>	<b>5</b>
- Urban Area	38	36	5	1	0	0	9,907	3,015,685	1	3	0	0	0
- Rural Area	107	106	5	1	0	0	8,874	2,055,102	1	9	0	3	5
- Remote Area	29	26	4	1	0	0	8,593	2,934,952	2	9	0	2	0

### 16.9 Indicators on Students and Staff by District, 2007/2008

District	Pupil Teacher Ratio	Pupil Staff Ratio	Pupil Class Ratio	Pupil Classroom Ratio	Classes per Classroom	Classroom Area (m2) per Pupil	Percentage of Total Students in				Percentage of	
							Pre-school	Primary	Lower Secondary	Upper Secondary	Non-tching Staff	Female Staff
Anlong Veang	59.8	51.3	37.7	53.2	1.4	1.0	0.5	79.3	17.2	3.0	14.2	22.7
Banteay Ampil	49.9	42.4	33.1	45.5	1.4	1.2	0.5	85.6	12.9	1.0	14.9	9.3
Chong Kal	48.5	40.1	34.6	51.4	1.5	0.9	2.0	82.9	15.1	0.0	17.3	24.0
Samraong	53.1	45.4	38.7	61.7	1.6	1.1	2.0	76.4	14.6	7.0	14.6	32.5
Trapeang Prasat	51.4	42.4	33.1	50.6	1.5	1.0	1.8	85.8	11.2	1.1	17.5	21.4
<b>Whole Province</b>	<b>52.5</b>	<b>44.4</b>	<b>35.6</b>	<b>52.3</b>	<b>1.5</b>	<b>1.1</b>	<b>1.3</b>	<b>81.5</b>	<b>14.3</b>	<b>2.9</b>	<b>15.4</b>	<b>21.7</b>
- Urban Area	53.1	45.4	38.7	61.7	1.6	1.1	2.0	76.4	14.6	7.0	14.6	32.5
- Rural Area	49.9	41.8	33.5	48.2	1.4	1.1	1.3	85.0	13.0	0.8	16.2	16.4
- Remote Area	59.8	51.3	37.7	53.2	1.4	1.0	0.5	79.3	17.2	3.0	14.2	22.7

## 17 Private Sector organizations in the District

### 17.1 Registered Companies in 2008, by district

On private sector at commune and/or district level	OMC	Anlong Veng	Banteay Ampil	Chongkal	Samrong	Trapeang Prssath
<b>Businesses and Companies</b>						
Number of registered agricultural enterprises (except family farms)	7	1	0	1	4	1
Number of registered shops, restaurants, transporters and other services	28	14	0	0	14	0
Number of manufacturing companies	35	10	0	0	23	2
Number of registered forestry enterprises	11	2	2	2	3	2
Number of registered mining companies	6	1	1	2	0	2
Number of financial institutions (ACELEDA, Thanakea Phum, AMK)	3	0	0	0	3	0
Number of other commercial institutions	-	n/a	n/a	n/a	n/a	n/a
Estimated number of informal enterprises (not registered)	8	3	n/a	n/a	5	n/a
<b>Employment</b>						
Number of people employed in 2008 by companies or any other enterprises	1,545	100	20	70	1,305	50
<b>Investment</b>						
Amount invested in 2008 by private sector	14,165,714	57,143	0	0	14,095,238	13,333
<b>Markets</b>						
Number of markets, operating at least weekly	7	2	1	1	2	1

**Note:** These data are not comprehensive as different companies and business are registered with different departments and not all departments were able or willing to provide detailed information. The number of informal enterprises reflects a rough estimate, made at provincial level and could not be verified.

**Source:** Data from SPPA's

### 17.2 Credit to Farmers in 2008, by district

Credit	OMC	Anlong Veng	Banteay Ampil	Chongkal	Samrong	Trapeang Prssath
Volume of credit provided to farmers in 2008	4,000	1,000	1,000	n/a	n/a	2,000
Number of farmers receiving credit in 2008	587	80	205	n/a	n/a	302
Volume of credit provided to companies in 2008	N/A	n/a	n/a	n/a	n/a	n/a

**Note:** Please note that these data are not necessarily complete or correct. The data are derived from government agencies at provincial and district level which used different recording systems, did not always have complete data or were, sometimes, less than willing to share their data.



# **SECTION E: MISCELLANEOUS INFORMATION**



## 18 Data on Poverty

### 18.1 Predicted Poverty Rates for 2009, by commune

The **Predicted Family Poverty Rate** is based on a statistical model (robust multilevel mixed effect regression) at village level developed by the NCDD M&E Unit and uses CDB data for making an estimate of the predicted poverty rate (this is: the portion of total families in the district or commune who are deemed poor) for the following year using current year data.

The basis for this predicted poverty rate also uses IDPoor (a project of the Ministry of Planning with technical assistance provided by GTZ) data.

District	Commune	2004	2009
Anlong Veang	Anlong Veang	45.80%	33.80%
Anlong Veang	Lumtong	41.40%	.%
Anlong Veang	Trapeang Tav	49.10%	38.90%
Anlong Veang	Trapeang Prei	41.70%	29.80%
Anlong Veang	Thlat	44.90%	34.20%
Banteay Ampil	Ampil	45.80%	40.80%
Banteay Ampil	Beng	47.10%	41%
Banteay Ampil	Kouk Khpos	47.70%	40.10%
Banteay Ampil	Kouk Mon	43%	37.80%
Chong Kal	Cheung Tien	46.10%	40.10%
Chong Kal	Chong Kal	46%	39.20%
Chong Kal	Krasang	56%	44.20%
Chong Kal	Pongro	43.40%	39.70%
Samraong	Bansay Reak	51.80%	50.30%
Samraong	Bos Sbov	50.80%	42.20%
Samraong	Koun Kriel	48.20%	44.80%
Samraong	Samraong	46.10%	35.20%
Samraong	Ou Smach	38.10%	17%
Trapeang Prasat	Bak Anloun	48.20%	37.60%
Trapeang Prasat	Ph'av	49.60%	45.20%
Trapeang Prasat	Ou Svay	52.10%	45.50%
Trapeang Prasat	Preah Pralay	50.90%	41%
Trapeang Prasat	Tumnob Dach	44.80%	37.10%
Trapeang Prasat	Trapeang Prasat	48.80%	38.70%

### 18.2 Poverty data from Survey

The Ministry of Planning IDPoor Program has developed standardized Procedures for Identification of Poor Households in rural areas. These Procedures are implemented using a participatory and consultative process by sub-national government structures and community representatives.

The IDPoor Program is managed by the Ministry of Planning (MOP), in cooperation with the Ministry of Interior's Department of Local Administration (DOLA). The program is supported by the Federal Republic of Germany, with technical assistance provided by German Technical Cooperation (GTZ). In 2009, AusAID also provided funding support to the Program.

#### Objective

The IDPoor Program aims to implement the Procedures for Identification of Poor Households in rural areas as widely as possible, in order to provide data on the level of poverty of areas and households that can be used by a large range of institutions and organizations for targeting services and development assistance to poor areas and poor households.

**Coverage:** During 2007, 2008 and 2009 the IDPoor Procedures have been implemented in 18 provinces (with partial or complete coverage), covering a total of around 7000 rural villages. The MOP and a number of NGO partners who are Health Equity Fund Operators have collaborated in collecting this data from different areas.

**Categorization:** Identified poor households are classified under two poverty categories: Poor Level 1 (very poor), and Poor Level 2 (poor). Households are classified based on data collected using a standard questionnaire, together with consideration by villagers of these households' special circumstances.

**Further information:** Please go to the IDPoor Program webpage at [www.mop.gov.kh/Projects/IDPoor/tabid/154/Default.aspx](http://www.mop.gov.kh/Projects/IDPoor/tabid/154/Default.aspx)

*This province has not yet been covered by IDPoor*