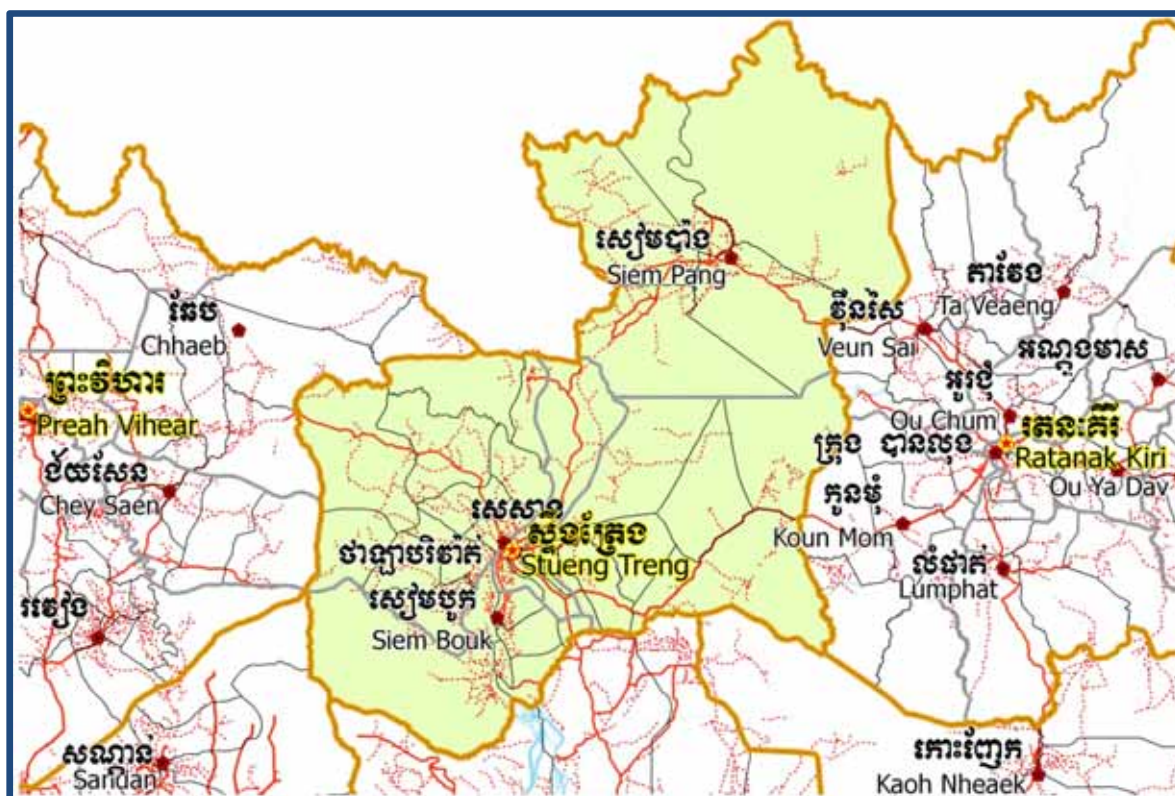


KINGDOM OF CAMBODIA

Nation Religion King

r r t s s

National Committee for Sub-National Democratic Development (NCDD)



Stung Treng Data Book 2009

GIS code: 19

October 2009

Stung Treng Data Book 2009

GIS code: 19

Table of Contents

List of Abbreviations.....	i
Glossary	iii
Preface.....	vii
Introduction.....	1
SECTION A: MAPS	3
1. Administration and Infrastructure	5
2. Land Use and Natural Resources.....	7
3. Poverty map.....	7
3.1. 2004 Poverty Map	9
3.2. 2009 Poverty Map	9
4. Land area and distance	11
4.1. Land area by district, mid 2009	11
4.2. Land used area by category, 2006.....	11
4.3. Distances between District Center and Provincial Town	11
SECTION B: PROVINCIAL PROFILE.....	13
5. General Information	15
5.1. Population of the Province.....	15
5.2 Occupations	16
5.3 Property.....	18
6 Infrastructure and Economy	20
6.1 Roads in meters, 2006-2008.....	20
6.2 Sewerage Pipes in meters, 2006-2008.....	20
6.3 Drainage and Bridges	20
6.4 Services in the Province.....	21
6.5 Agriculture	21

7	Social Aspects.....	32
7.1	<i>Education</i>	32
7.2	<i>Health.....</i>	38
7.3	<i>Water and Sanitation.....</i>	39
7.4	<i>Vulnerable groups</i>	43
7.5	<i>Migration.....</i>	45
8	Natural Resources and Environment (NRE).....	47
8.1	<i>Families involved with NRE issues, 2006-2008.....</i>	47
8.2	<i>Percentage of Families involved with Natural Resource issues, by District, for 2008.....</i>	47
8.3	<i>Percentage Houses with access to Garbage collection and Families affected by environmental Pollution, by District, for 2008.....</i>	47
8.4	<i>Percentage Families using chemical Fertilizer and chemical Pesticides, by District, for 2008</i>	48
9	Administration and Security	49
9.1	<i>Birth Registration, 2006-2009</i>	49
9.2	<i>Number of unregistered Infants born in 2008, by District</i>	49
9.3	<i>Registered criminal Cases, 2006-2008.....</i>	49
9.4	<i>Registered criminal Cases per 10,000 people, by District, for 2008.....</i>	49
9.5	<i>Number of registered Land Disputes, by District, in 2008</i>	49
10	Gender.....	50
10.1	<i>Reported Domestic Violence, 2006-2008.....</i>	50
10.2	<i>Percentage of reported cases of Families experiencing domestic Violence, by District, in 2008</i>	50
10.3	<i>Women's involvement, 2006-2008.....</i>	50
10.4	<i>Percentage of Female Participants in Civil Society and of 18-60 year women with uncertain Jobs, by District, in 2008.....</i>	51
10.5	<i>Female-headed Households, 2006-2008.....</i>	51
10.6	<i>Percentage female-headed Households and with Children of less than 5 years old, by District in 2008</i>	51

11	Indigenous People in the District	52
11.1	<i>Ethnic Minorities in the District, 2006-2008.....</i>	52
11.2	<i>Other Minorities in the District, 2006-2008.....</i>	52
	SECTION C: PLANS AND PROJECTS	53
12	Priorities and Plans.....	55
12.1	<i>Priorities of the Districts in the Province for 2009 by Sector.....</i>	55
12.2	<i>Total Expenditure on C/S Fund Projects by sector and district between 2005 and 2008 ...</i>	57
13	District level Projects from 2006 to 2009	58
13.1	<i>District Initiative Infrastructure Projects from 2006 to 2009</i>	58
13.2	<i>District Initiative Service Projects from 2006 to 2009</i>	59
13.3	<i>Inter Commune Council Projects in 2008 and 2009</i>	61
13.4	<i>Provincial Investment Fund (PIF) and District Investment Fund (DIF)</i>	62
13.5	<i>Other projects in the Province.....</i>	65
	SECTION D: SERVICES AND ORGANIZATIONS	69
14	Infrastructure.....	71
14.1	<i>Lengths of and Expenditure on Roads in 2008 by District.....</i>	71
14.2	<i>Scale of and Expenditure on Irrigation in 2008 by District.....</i>	71
14.3	<i>Power Supply in 2008 by District</i>	71
15	Health Facilities.....	72
15.1	<i>Health Facilities by Operational District</i>	72
15.2	<i>Health Facilities and Staff by Operational District, 2008.....</i>	73
15.3	<i>Deliveries in 2007, by Operational District.....</i>	73
15.4	<i>Major Health NGOs active in the Province, by Operational District.....</i>	74
16	Education	75
16.1	<i>Schools, Classes, Students and Staff in 2007/2008.....</i>	75
16.2	<i>Characteristics of Schools and School Principals in 2007/2008.....</i>	75
16.3	<i>Enrollment by Level of Education, 2006/2007</i>	76

16.4	<i>Enrollment by Level of Education 2007/2008</i>	76
16.5	<i>New Intake and Enrollment by Level and Age (Both Sexes), 2007/2008.....</i>	77
16.6	<i>Condition of School Buildings, 2007/2008</i>	77
16.7	<i>Condition of Classrooms and Existence of Separate School Office and Library, 2007/08..</i>	78
16.8	<i>Community Participation and Financing, 2007/2008</i>	78
16.9	<i>Indicators on Students and Staff by District, 2007/2008.....</i>	79
17	Private Sector organizations in the District	80
17.1	<i>Registered Companies in 2008, by district</i>	80
17.2	<i>Credit to Farmers in 2008, by district.....</i>	80
	SECTION E: MISCELLANEOUS INFORMATION	81
18	Data on Poverty.....	83
18.1	<i>Predicted Poverty Rates for 2009, by commune</i>	83
18.2	<i>Poverty data from Survey.....</i>	84

List of Abbreviations

#	Number
AGR	Agriculture
BR	Birth Registration
CCs	Commune Councils
C. Pilot	Piloted Commune
C/S	Commune / Sangkat
CBO	Community-Based Organization
CDB	Commune Database
CDPD	Commune Development and Planning Database
CIP	Commune Investment plan
CLTS	Community Led-Total Sanitation
Comm.	Commune
Com Cov	Commune Covered
CPA	Complementary Package of Activities
CPS	Community Preschool
CCWC	Commune Committees for Women and Children
DANIDA	Danish International Development Agency
DDLG	Democratic Development and Local Governance Project (EC-UNDP)
DFID	Department For International Development (UK)
DIF	District Investment Fund
DIP	District Initiative Project
DIS	District Information System
District PDRD	District Office of Rural Development
District WP	District Work Plan
DIW	District Integration Workshop
DMC	Department of Media and Communication
DoLA	Department of Local Administration
Dr	Doctor
DWRM	District Office of Water Resource and Meterology
ECD	Early Childhood education (part of PE)
EMIS	Education Management Information System
Event IC	Celebration of International Days
FDH	Former District Hospital
GTZ	German Society for Technical Cooperation (Gesellschaft für Technische Zusammenarbeit GmbH)
Ha	Hectare
HC	Health Center
HC (NB)	Health Center (no building)
HH	Headed Household
HSI	Intervention for Health
HP	Health Post
HW	Hand Washing
ICC	Inter Commune Council
IFAD	International Fund for Agricultural Development
IND	Industry
Inter-commune	Inter-Commune Project Management Committee or Inter-commune project
IO	International Organization
JICA	Japan International Cooperation Agency
LASED	Land Allocation for Socio-Economic Development
LAU	Local Administration Unit
LGCR	Local Governance for Children's Rights

M&E	Monitoring and Evaluation
MA	Medical Assistant
MAFF	Ministry of Agriculture, Forestry and Fisheries
MEF	Ministry of Economy and Finance
MoEYS	Ministry of Education, Youth and Sports
MoH	Ministry of Health
MoI	Ministry of Interior
MoP	Ministry of Planning
MoWA	Ministry of Women's Affairs
MoWRAM	Ministry of Water Resources and Meteorology
MPA	Minimum Package of Activities
MW1	Primary Midwives
MW2	Secondary Midwives
n/a	Not available
NCD	National Contracts Database
NCDD	National Committee for Sub-National Democratic Development
NGO	Non-Governmental Organization
NREM	Natural Resources and Environment Management
NRML	Natural Resources Management and Livelihood
NU1	Primary Nurse
NU2	Secondary Nurse
OD	Operational District
ODF	Open Defecation Free
Ope. Costs	Operational Costs
Others	Other Staff
PBW	Public Works
PDoEYS	Provincial Department of Education, Youth and Sport
PDRD	Provincial Department of Rural Development
PDWRM	Provincial Department of Water Resource and Meteorology
PE	Parenting Education
PHAST	Participatory Hygiene and Sanitation Transformation
PHD	Provincial Health Department
PID	Project Information Database
PIF	Provincial Investment Fund
PMC	Project Management Committee
Pop 04-05	Population Covered 2004 or 2005
PSDD	Project to Support Democratic Development through Decentralization and Deconcentration
RRD	Rural Road Development
RH	Referral Hospital
RILGP	Rural Investment and Local Governance Project
RPRP	Rural Poverty Reduction Program
RuLIP	Rural Livelihoods Improvement Program
SIDA	Swedish International Development Cooperation Agency
SPPA	Senior Provincial Program Advisor
TBA	Traditional Birth Attendant
UNDP	United Nations Development Project
UNICEF	United Nations Children's Fund
Vil	Village
Vil Cov	Village Covered
VIL-HC	Distance from Village to Health Center
WASH	Water, Sanitation and Hygiene
WRM	Water Resource and Meteorology

Glossary

C/S Fund: The Commune/Sangkat Fund is established and managed by the Government of Cambodia to provide financial support for development projects and administrative costs of Commune/Sangkat Councils. The amount is determined as a percentage of the National Budget (for 2009: 2.8% over the 2008 budget) and is expected to increase gradually over the years. The total 2009 budget under this fund is \$ 27,643,902 (of which \$ 19,272,170 is for Development Projects and \$ 8,371,731 for Administration). Under the Rural Investment and Local Governance Project the World Bank currently reimburses the costs of development projects if these meet the Bank's criteria.

CDB: the Commune Data Base is a national database, compiled by the Ministry of Planning, on the basis of detailed questionnaires, completed at village and commune level, which are then sent to the Departments of Planning for data entry. The most recent round of data collection took place at the end of 2008 (and is reflected in the District Data Books). Commune, District and Provincial Profiles can be generated from this database and should be available from provincial Departments of Planning.

CDPD: the Commune Development and Planning Database is a database maintained by Departments of Planning and Ministry of Planning, recording proposed activities as determined and prioritized by Commune and Sangkat Councils; the Temporary Agreements between these councils and supporting agencies, as decided at District Integration Workshops and details on projects that actually take place at commune, district and provincial levels.

CIP: The Commune Investment Plan is a rolling three-year plan, developed and decided by the Commune or Sangkat Council. It sets priorities and identifies the projects proposed for the years to come.

Commune and Sangkat: the Communes (in rural areas) and Sangkats (in urban areas) are the lowest and smallest units of local government. Councils are elected directly, once in five years, for the 1417 Communes and 204 Sangkats. Within these Communes and Sangkat areas there are 14,119 villages, which have Village Chiefs, but do not constitute a formal level of local government.

DIA/P: the District Investment Initiative/ Project is jointly supported by the MDLF (Multi-Donor Livelihood Facility (supporting the NRM&L Program) and PSDD. In 2009 it covers 106 districts, 60% of the total in the country, with a budget of \$ 3.2 million. It is focused on capacity development in planning, democratic development, public competitive procurement, financial management and service delivery.

DIS: The District Information System is a national database maintained by NCDD, recording resources, staff, revenue, infrastructure and equipment available in the 193 Districts and Khans throughout the country. The last update took place in July 2009.

District, Municipality and Khan constitutes the third level of Government in Cambodia. There are 159 rural Districts, 26 Municipalities and 8 Khans of Phnom Penh Capital. They all have Councils which were, for the first time, elected in May 2009, by the Commune/Sangkat Councilors. These councils have a mandate for 5 years.

DIW: District Integration Workshops are held between July and October, to bring Commune/Sangkat Councils, looking for support for their projects, together with the governmental and non-governmental agencies that may provide support.

ICC: Inter Communes Council projects are executed in 10 provinces under the Democratic and Decentralized Local Governance Project (DDLG). This five year project (2006-2010) is executed by Ministry of Interior and funded by the European Commission and UNDP. The project focuses on improving dialogue partnership and accountability; create a network of Commune Councils at the provincial and national level and support and contribute to local area development for poverty reduction. The work under the ICC component supports investments and services formulated through inter-commune dialogue and planning.

MEDiCAM: A non-profit and non-partisan membership organization for NGOs active in Cambodia's health sector. It is the primary networking agency for the country's health-related NGOs.

NCD: The National Contracts Database is used for the design of investment projects at provincial and district levels and, once a project is approved, for monitoring the progress of investment projects. The NCD has been continuously adapted for use by different donor projects and currently is used for PSDD, DANIDA NRMLP, UNICEF, IFAD, Canadian CIDA projects. The database was first designed in 2005 and is maintained by the NCDD with quarterly updates.

NCDD: the National Committee for sub-National Democratic Development is the inter-ministerial body charged with the implementation of the Organic Law (a key legislative document, adopted in 2008, outlining the envisaged decentralization). NCDD also channels substantial financial assistance by a number of Development Partners, to projects and programs at various levels. This amounted to over \$ 91 million in 2008. More information at: www.ncdd.gov.kh, this website also provides access to reports, manuals, legal documents, details on projects and more.

OD: the Operational Districts are the districts as defined and used by the Ministry of Health. These do not coincide with the 193 (Administrative) Districts and Khans, as used by all other RGC agencies. The Operational Districts are usually larger, and so there are 77 Operational Districts against 193 administrative Districts and Khans. However they do fit within the boundaries of administrative provinces.

PID: The Project Information Database is the database maintained by NCDD at national and sub national level, to follow all aspects of projects by Commune and Sangkat Councils, including the C/S Fund projects.

PIF: The Provincial Investment Fund is allocated to all Provinces and Municipalities according to a population based formula. Part of the fund is earmarked for support to planning activities of the Provincial / Municipal Department of Planning; and to gender mainstreaming activities of the Provincial Department of Women's Affairs. The remaining "un-earmarked PIF" is allocated by PRDC to sectoral technical departments against established criteria and in response to proposals with prioritisation taking into account: priorities formulated by the CS Councils and aggregated by District into District Priority Activities Matrices (DPAM); alignment with national planning and poverty alleviation criteria, complementarity with other planned activities; and performance of the Department concerned in implementation of activities in previous years. With this provisional allocation, the Department then programs activities through the District Integration Process. Finally, the agreed activities, plus support costs amounting to no more than 25% of the total, are included in a sub-contract signed between PRDC and the Department, pursuant to the overall PSDD contract signed between NCDD and PRDC. Total budget has been around \$ 2 million per year.

Province: the 23 Provinces and Phnom Penh Capital City represent the 2nd layer of government. They vary in size, from very small, like Kep (approx. 36,000 people) and Pailin (approx. 70,000 people), or large but with small populations, like Mondul Kiri (over 60,000 people), and Ratanak Kiri (over 153,000) to densely populated and large, like Kampong Cham (over 1.7 million people) and Kandal (approx. 1.4 Million people).

PSDD: the Project to Support Democratic Development through Decentralization and Deconcentration is funded by DFID (UK), SIDA (Sweden) and UNDP and runs from 2006 till the end of 2010 (including a one year extension). Annual budgets range from \$ 11 million to over \$ 18 million. The project provides core technical support to NCDD and to the provinces, financial support to the C/S Fund, District Initiative, Provincial Investment Fund and capacity building support through training, studies and advisory services.

RILGP: The Rural Investment and Local Governance Project is the World Bank funded project that provides substantial support to C/S Fund projects and to developing the required infrastructure, policies, systems and skills needed. It started in 2003 with a Loan for \$ 22 million for 2003-2007 and was then extended with a Grant of \$ 36 million for the period of 2007-2010. Discussions about a possible RILGP 2 are taking place between RGC and the World Bank.

RPRP: the Rural Poverty Reduction Project is a seven years project from 2004 till 2010, funded by IFAD and UNDP and implemented through the Ministry of Agriculture, Forestry and Fishery, supported by the Ministry of Interior and facilitated by NCDD. The project is active the provinces Prey Veng and Svay Rieng and focuses on 120,600 households below poverty line. The objective is poverty reduction with the active participation of the poor through improved livelihoods, Strengthened capacity, Sustainable farming systems and natural resource management, new and/or rehabilitated infrastructure development, increase accessibility to technology, services and markets for their economic and social development.

RULIP: the Rural Livelihoods Improvement Project is implemented by the Ministry of Agriculture Forestry and Fisheries (MAFF)' Project Support Unit- PSU, with the NCDD playing the role of cooperating agency. Funded by IFAD and UNDP, the project will run till 2014. The target group consists of poor households who have little or even no land, few livestock or other assets and often many dependents. The main goal of the project is to directly or indirectly improve the livelihood systems, food security and incomes of a total of 33,900 rural poor, ethnic minority and female headed households in targeted village of Kratie, Preah Vihear and Ratanak Kiri provinces in a sustainable manner.

Seth Koma: The UNICEF funded Seth Koma program focuses on measurable action for children and women. During 2006 -2010 it is implemented in six provinces. Government and UNICEF pursue a set of inter-related goals, addressing critical stages of the life cycle of the child: a) Mothers have safe pregnancies and deliveries and healthy newborns; b) best possible start in life of infant; c) Children enter schools at the right age of six years; d) Children are protected from exploitation, abuse, violence, discrimination and other risks; and e) Youth and adolescents acquire life skills, express their views, participate in the decisions.

Preface

The Government of Cambodia attaches great importance to optimal use of scarce resources and to participatory planning and management at all levels. The Organic Law which was adopted in 2008 provides the legal context for further steps towards improving and decentralizing planning, management and monitoring, and towards greater accountability and transparency of institutions at sub-national levels.

The Government has established elected Councils at the sub-national levels, and we will progressively give them the responsibilities, together with the human and financial resources, to deliver a wide range of public services. They will be more democratic, more efficient, more transparent and accountable, better at addressing gender and other inequalities, and at fighting corruption. We recognize that development does not come from government alone; it needs the involvement of citizens, civil society and the private sector, and the new system will facilitate this.

A central element in this process is the availability of information on any aspect of development to all concerned parties. The newly elected Councillors at Provincial level, Provincial line departments operating, but also NGOs, Development Partners and citizens throughout Cambodia need information on problems and requirements, resources and opportunities, services and agencies, plans and projects. They will need such information to better understand the present situation, set targets for the future, monitor progress, know what others are doing and to apply resources wisely and this is the reason the Provincial Data books will be so valuable.

The Provincial Data Books are a major step towards full transparency and towards informed planning and decision-making. They provide all available data at Provincial and District level in easily accessible formats, in Khmer and English. This is in addition to the more detailed District Data Books which have been produced for all Districts, which show Commune level information as well.

This is the first time in Cambodia (and possibly in South East Asia) that such detailed information is made so widely available and NCDD should be commended for the hard work that has gone into this. We also thank the Ministry of Planning, which provided the detailed data of the Commune Data Base, the sectoral ministries and provincial authorities who contributed data and the Development Partners who provided financial support.

It is our sincere hope that the publication of the Data Books will strengthen capacities, especially at provincial and district levels, for evidence-based development planning. We also hope that this information will deepen the understanding among Ministries, Provincial Authorities, Development Partners, NGOs and research agencies of the realities at commune and district levels.

We call upon all to use and distribute this information, complement or correct where appropriate and to contribute new data in the years to come.

28th March 2010

Sar Kheng

Deputy Prime Minister, Minister of Interior
and Chairman of NCDD

Introduction

Purpose

The purpose of the Provincial Data Books is to bring together information on any aspect of life and development of Provinces and Districts, and make this widely available. The primary targets are the newly elected Provincial Councilors, provincial level line departments, other provincial agencies, Development Partners and NGOs operating at this level. They need detailed knowledge on current living conditions, natural resources, infrastructure, agriculture and other economic activities, current service levels, past and planned projects and available resources.

While much information exists on many of the above aspects, it is often hard to access that information and much is lost to reports, databases and statistics that are not widely shared. Data are often only available in one language and often out-of-date, and many reports cover only one sector or region.

We found that these problems are especially acute at the district level and much effort has been put into producing **District Data Books for all Districts, Municipalities and Khans**, which show data at District/Municipality/Khan level and at Commune/Sangkat level. These can be obtained from NCDD or accessed through the NCDD website. However, in the context of decentralization the Provinces may also become a more significant level of local government and development planning, and a source of technical support to district level planning. This creates an urgent need for wide-ranging data to be used for setting base-lines, planning and prioritizing, monitoring and learning.

Approach

We have attempted to identify and compile all available statistics, reports, maps and other data at province and/or district level. From this we have selected information that is available for all or most provinces, reasonably reliable and up-to-date, sufficiently detailed and of possible interest to development planners, decision makers, agencies and citizens.

The major sources of the information in these Provincial Data Books are:

- a) The Commune Data Base information over the years 2006 to 2009 (the most recent data were collected late last 2008)
- b) Detailed information directly collected from the Ministry of Health, the Ministry of Information, the Ministry of Education, Youth and Sports and (for maps) the Ministry of Land Management, Urban Planning and Construction
- c) The Project Information Database (PID) at NCDD (up-to-date)
- d) The Commune Development and Planning Database (CDPD) (up to date)
- e) The National Contracts Database (NCD) (up to date)
- f) Direct data collection at provincial and district level on private sector, irrigation, roads, and electricity, through provincial agencies
- g) Medical data collected from MediCam
- h) The ID Poor Project – for poverty data on a number of provinces and districts
- i) NCDD's work on predictive poverty rates
- j) Specific projects for project outputs, expenses and budgets (Seth Koma, RILGP, RPRP and ICC)

Limitations of the data

We are fully aware that the data we collected are not always complete, consistent or correct. While we have rejected information that was wrong or very incomplete, we decided not to aim for statistical and scientific perfection, but to include information that is useful, relevant and comprehensive. We also accepted different sources for the same data as this may encourage discussion on the quality of the respective data.

We strongly encourage anyone who notes errors or incompleteness in these data to contact us and to share their data. We hope that the next round of producing such Provincial Data Books can draw on wider sources and more complete data.

We encourage the Provincial Agencies, who can receive these data also in digital format, not only to use these for their planning and monitoring, but also to start correcting and updating these data and to share new data with NCDD for future use.

Contents

The information in the following pages is organized in five sections:

a) Geographical data: this section provides maps on infrastructure and administration and on land use and natural resources management. These maps are also provided in large format to all Provinces.

b) Provincial Profile: this presents wide ranging data, covering 2006 – 2009, at provincial and district level, extracted from the Commune Data Base, but edited for better understanding.

c) Plans and Projects: this section presents development priorities determined by Commune and Sangkat Councils, outputs and expenditure of major projects at Province and District level over 2006 – 2008, and plans and budgets for 2009.

d) Services and Organizations: this section provides details on key infrastructure (roads and related infrastructure, electricity, irrigation systems) and services in health and education at Province and District level. It also provides information on private sector agencies active in the Province.

e) Poverty Data: this section provides predicted poverty rates for 2009 for all districts and communes and detailed poverty data compiled and processed by the ID Poor project for those that have been covered by the project.

The future

It is our sincere hope that this is the start of a longer-term process. We hope that a next edition of these Provincial Data Books will offer more comprehensive, and up-to-date information. We hope that the Provincial Administrations will not only start using this information, but also improve and update it. For this they are all provided with the full data set in digital format.

We invite agencies, projects and experts to send reports, statistics and maps that could be used for a next version to us and we invite all users of the Provincial Data Books to inform us about errors, updates and inconsistencies. Please contact us through info@ncdd.gov.kh

We now invite you to browse through this data book. You may open this randomly or use the table of contents and go to the aspects that have your special interest.

We hope that you will be informed, surprised and assisted. We hope, above all, that this information will lead to a deeper understanding of causes and effects of poverty, to purposeful decisions on how to tackle those causes and to greater transparency in using scarce resources for the benefit of all.

SECTION A: MAPS







4. Land area and distance

4.1. Land area by district, mid 2009

District	Total Land Area (ha)	Forest Land Area (ha)		Cultivation Land Area (ha)	Construction Land Area (ha)	Other Land Area (ha)
		Total	Flooded Forest Area			
Sesan	270,300	-	-	6,233	-	264,067
Siem Bouk	145,900	3,640	3,640	7,698	-	134,562
Siem Pang	455,900	422,246	-	5,453	1,683	26,518
Stueng Traeng	69,000	42,127	-	1,512	25,361	-
Thala Barivat	260,505	240,641	-	7,570	12,294	-
Total	1,201,605	708,654	3,640	28,466	39,338	425,147

Source: District Information System, DoLA

4.2. Land used area by category, 2006

Land Type	Area in Ha
Urban Settlement	696.79
Village Settlement	2,366.78
Airfield	6.15
Wet season rice	21,086.50
Cropland	38.49
Irrigated Cropland	441.29
Orchard	29.82
Swidden	12,020.53
Dry Evergreen broad leafed forest (NE)	375,302.35
Deciduous forest	280,445.37
Dry Deciduous (Open) forest	14,541.89
Mixed forest (evergreen and deciduous)	252,699.47
Riparian forest	30,038.58
Secondary forest	81,776.31
Flooded Forest	1,230.18
Flooded forest (Dense)	879.70
Grassland	7,854.51
Abandoned field covered by grass	2,422.30
Flooded Grass	99.11
Shrubland	7,396.59
Abandoned field covered by shrub	25,267.40
Shrubland and scattered trees	50,636.95
Lake	166.04
Reservoir	42.47
River	29,847.29
Marsh	3,350.99
Barren land	56.36
Sand bank	898.98
Rock outcrop	19.39

Source: GIS data, Land Used 2006, MLMUPC

4.3. Distances between District Center and Provincial Town

District	Distance in Km
Sesan	22
Siem Bouk	18
Siem Pang	100
Stueng Traeng	1
Thala Barivat	3

Source: Provincial Administration

SECTION B: PROVINCIAL PROFILE¹

¹ All data in this section come from the Commune Database (CDB) unless otherwise specified. These include primarily new CDB data, collected late 2008, and some data from earlier years.

5. General Information

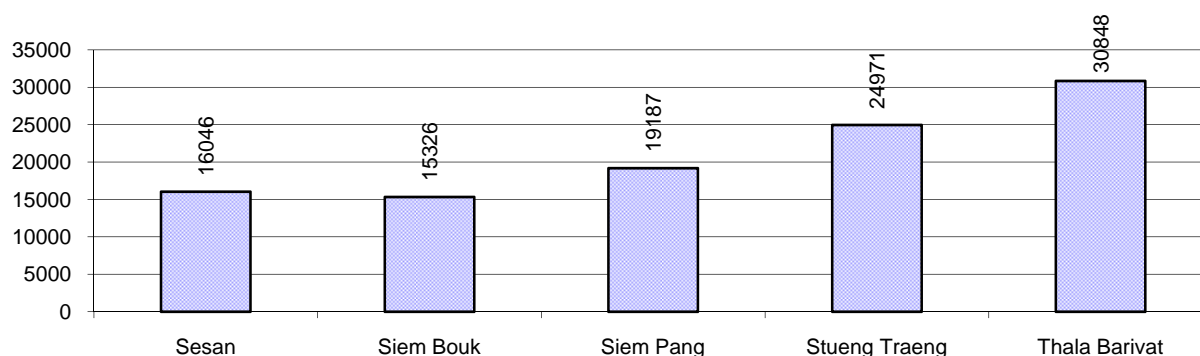
5.1. Population of the Province

5.1.1 Total Population

Number of families	2005	2006	2007	2008
Total number of families	18,721 families	19,206 families	20,042 families	20,819 families
Increase (+)/Decrease (-) in nr of families		3%	4%	4%
Total population	96,015 pers	98,374 pers	99,322 pers	106,378 pers
Increase (+)/Decrease (-) in nr of people		2%	1%	7%
Number of female Headed Households (HH)	1,840 families	2,234 families	1,794 families	1,898 families

Note: Percentages of population and increase/decrease are calculated on basis of the previous year. A negative sign in front of the percentage indicates a decrease in population.

5.1.2 Population, by District, in 2008



5.1.3 Population, by Age Group, 2006-2008

Population by age group	2006	2007	2008	
	%	%	%	Number
Age 0-5 years (as percentage of the population)	15%	15%	16%	16,498 persons
Male 0-5 yrs	50%	49%	50%	8,315 persons
Female 0-5 yrs	50%	51%	50%	8,183 persons
Age 6-17 (as percentage of the population)	32%	32%	32%	33,543 persons
Male 6-17 yrs	51%	50%	50%	16,822 persons
Female 6-17 yrs	49%	50%	50%	16,721 persons
Age 18-60 (as percentage of the population)	49%	49%	48%	51,365 persons
Male 18-60 yrs	50%	49%	49%	25,190 persons
Female 18-60 yrs	50%	51%	51%	26,175 persons
Age 61 above (as percentage of the population)	4%	4%	5%	4,972 persons
Male 61	47%	49%	49%	2,459 persons
Female 61	53%	51%	51%	2,513 persons

Note: The overall percentage for each age group is calculated on the basis of the total population. The gender distribution of each group is calculated on the basis of the population within that particular age group.

5.2 Occupations

5.2.1 Percentage of families with a particular Occupation, 2006-2008

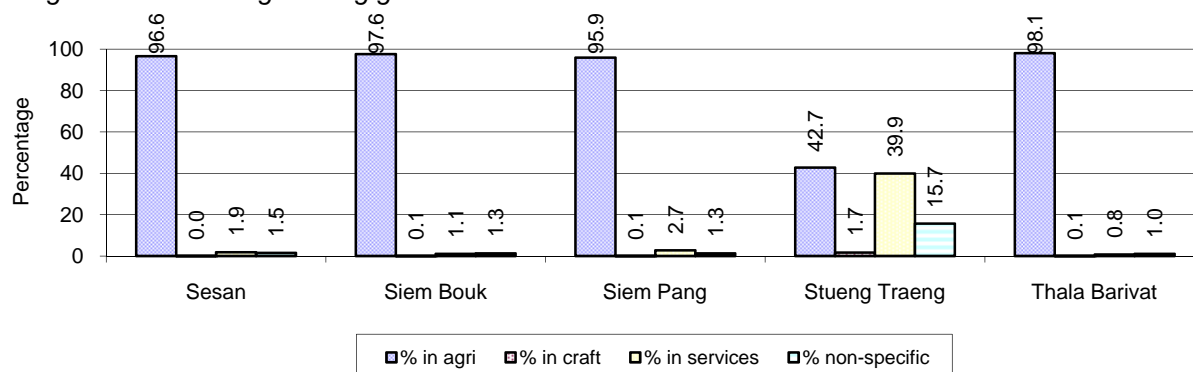
This table shows the percentage of the population who have a particular occupation (job), for example the percentage of the population in the district who are rice farmers, furniture crafter, trader, etc.

Description	2006	2007	2008	
	%	%	%	Number
Families whose main occupation is agriculture	83%	84%	85%	17,683 Families
Families whose primary occupation is rice farming	77%	78%	80%	16,581 Families
Families whose primary occupation is cultivating long-term crops	3%	2%	2%	422 Families
Families whose primary occupation is cultivating short-term crops	1%	2%	1%	295 Families
Families whose primary occupation is cultivating vegetable	1%	1%	0%	93 Families
Families whose primary occupation is fisherman	1%	0%	1%	215 Families
Families whose primary occupation is livestock farmer	1%	0%	0%	61 Families
Families whose primary occupation is NTFP collection	0%	0%	0%	16 Families
Families whose main occupation is craft work	0%	0%	0%	91 Families
Families, whose main occupation is in furniture craft, wooden, rattan, vine, bamboo	0%	0%	0%	48 Families
Families whose main occupation is in metal, aluminum, glass goods production	0%	0%	0%	9 Families
Families whose main occupation is food production	0%	0%	0%	11 Families
Families whose main occupation is tire, plastics and rubber goods production	0%	0%	0%	0 Families
Families whose main occupation is textile, clothing goods production	0%	0%	0%	1 Families
Families whose main occupation is in other production, not listed above	0%	0%	0%	22 Families
Families whose main occupation is services	3%	3%	10%	2,109 Families
Families whose main occupation is trade	2%	1%	6%	1,252 Families
Families whose main occupation is repair	0%	0%	0%	104 Families
Families whose main occupation is providing transport services	0%	1%	1%	159 Families
Families whose main occupation is providing other services	1%	1%	3%	594 Families
Families whose main occupation is not clear (or multi)	13%	13%	4%	936 Families

Note: The occupation percentages are calculated on the basis of the total number of families.

5.2.2 Percentage Families that work in one of four occupational sectors, by District in 2008

This table indicates the percentage of families involved in one of four occupation types: agriculture, craft, services or non-specific (other). Please note agriculture includes forestry activities such as cutting down trees and gathering gum from the trees.



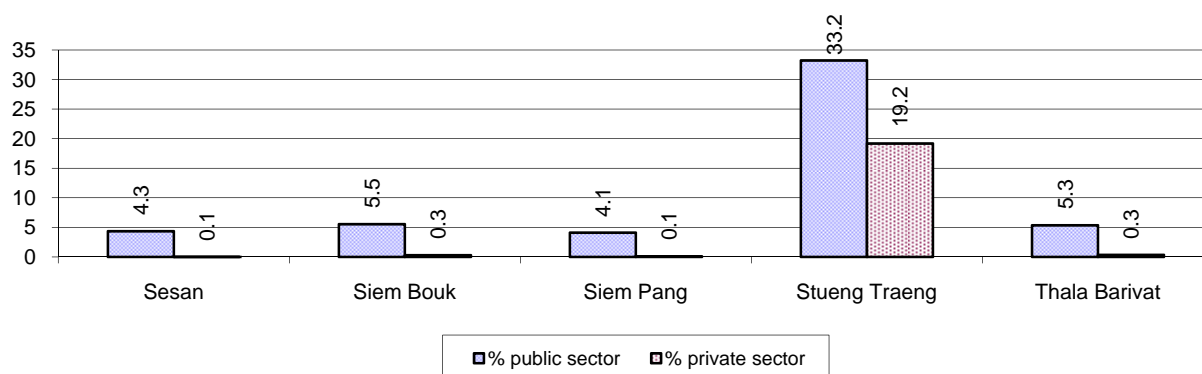
Note: Calculated on the basis of the total number of families within a province.

5.2.3 Percentage of Families with public Sector, private Sector or uncertain Jobs, 2006-2008

Description	2006	2007	2008	
	%	%	%	Number
Families that have a family member who is a government official, staff or worker	13%	13%	11%	2,347 families
Families that have a family member who is a private sector staff or worker	6%	6%	4%	933 families
Number of people aged 18-60 with uncertain/irregular jobs	5%	2%	2%	847 persons

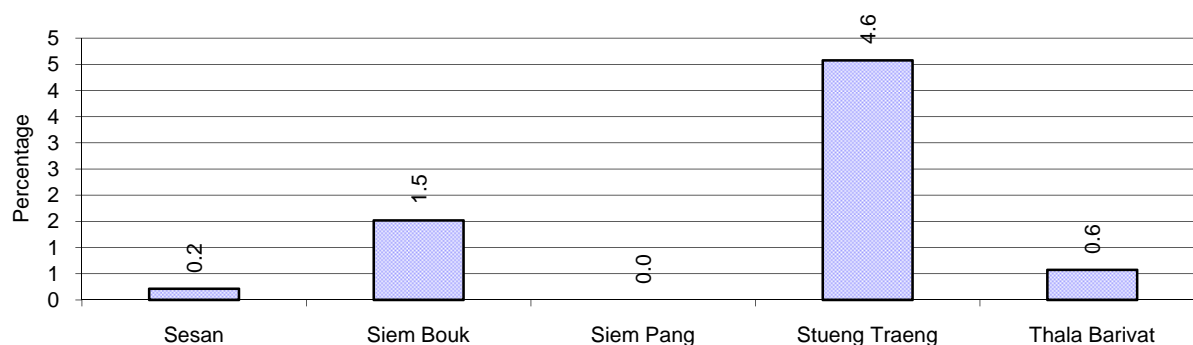
Note: In the first two rows percentages are calculated on the basis of the total number of families. In the third row the percentage is calculated on the basis of the total number of people aged 18-60 years.

5.2.4 Percentage of Families with public or private Sector Jobs, by District in 2008



Note: Calculated on the basis of the total number of families in the district

5.2.5 Percentage of People aged 18-60 years with uncertain/irregular Jobs, by District, in 2008.



5.3 Property

5.3.1 Housing types and facilities, 2006-2008

This table shows the percentage of people living in a certain type of house. It also indicates how many houses have electricity or battery powered lights and how many have TV.

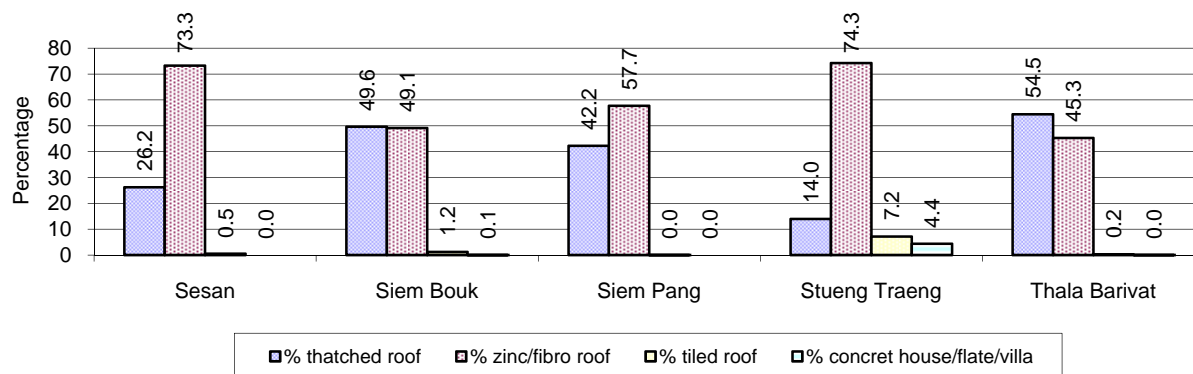
House Type	2006 %	2007 %	2008	
			%	Number
House with thatched roof	43 %	41 %	38 %	7,121 houses
House with zinc/fibro roof	54 %	56 %	59 %	11,251 houses
House with tiled roof	2 %	2 %	2 %	392 houses
Flats/apartments (with many families living)	0 %	0 %	0 %	6 houses
Concrete house or flat (with one family living)	1 %	1 %	1 %	210 houses
Villa house	0 %	0 %	0 %	0 houses
Houses with electricity	18 %	18 %	18 %	3,359 houses
Houses with battery light	15 %	19 %	21 %	3,892 houses
Houses with TV	17 %	20 %	24 %	4,486 houses

Note: Calculated against the total number of houses

5.3.2 Families living on public Land or without a permanent House

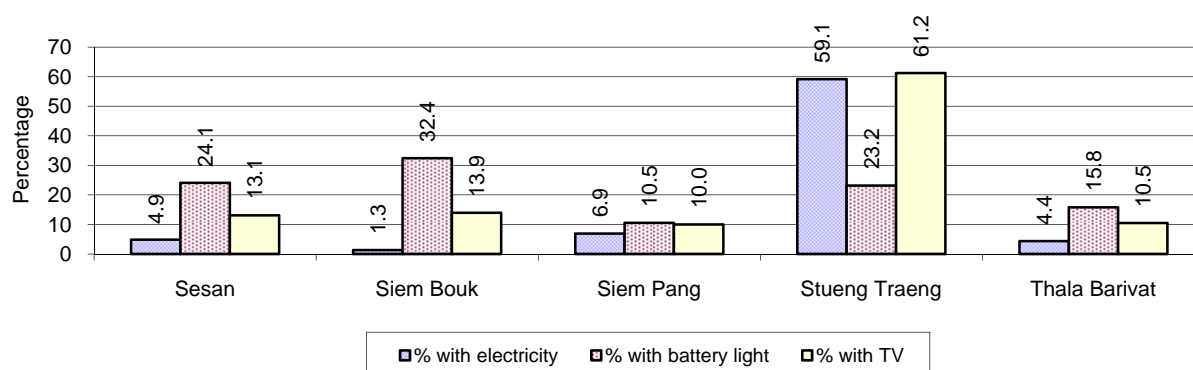
Living situation	2006	2007	2008
Families living in a house on public land	277 families	237 families	384 families
People, without permanent housing	57 person(s)	46 person(s)	39 person(s)

5.3.3 Percentage of Population living in a particular type of House, by District, in 2008



Note: Calculated against the total number of houses in each district

5.3.4 Percentage of Houses with Electricity, Battery Lights and/or TVs, by District, in 2008



Note: Calculated against the total number of houses in each district

5.3.5 Types of Vehicles and their ratio to Families, 2006-2008

This table shows the number of families per vehicle in the province. The last column shows the total number of each type of vehicle in the province for 2008.

Description	2006 ratio	2007 ratio	2008	
			Ratio	Number
Bicycle and bicycle with trailer	3	2	3	7,767
Ox-carts and horse-carts	9	8	9	2,343
Motorbike/with trailer	5	4	3	6,789
Motor tri-cycle	N/A	20,042	10,410	2
Large Transportation				
Total number of cars/trucks	49	47	36	571
Locally made vehicles	447	426	251	83
Trucks for goods transport	260	196	171	122
Buses/mini buses for passengers	768	835	631	33
Family cars	77	79	63	333
Agriculture machinery				
Tractors used for plowing	2,401	2,505	612	34
Power-tillage used for plowing	71	52	39	528
Other type of machinery				
Other type of machinery	256	911	631	33
Water transportation				
Row boats	4	5	6	3,708
Total number of motor boats				
Motor boats used for fishing	7	6	6	3,247
Motor boats used for passengers	492	282	237	88
Motor boats used for goods transporting	89	73	179	116

Note: Ratio of families to a particular type of vehicle is the result of the total number of families divided by total number of that type of vehicle. Other types of vehicles, such as bulldozer, excavator, rollers etc. are not listed.

6 Infrastructure and Economy

6.1 Roads in meters, 2006-2008

Description	2006	2007	2008
Bituminous road	0 m	0 m	0 m
DBST, Macadam road	0 m	0 m	1,180 m
Concrete road	0 m	0 m	0 m
Laterite road	73,956 m	206,113 m	35,015 m
Constructed earth road	4,542 m	49,464 m	4,500 m
Un-constructed earth road	54,238 m	58,024 m	132,601 m

6.2 Sewerage Pipes in meters, 2006-2008

Description	Sewerage pipe length		
	2006	2007	2008
Total length of sewage pipe, diameter 30-50 cm	5 m	69 m	42 m
Length of newly constructed sewage pipe, diameter 30-50 cm	49 m	63 m	5 m
Length of sewage pipe, diameter 30-50 cm needs repair/rehabilitation	0 m	0 m	0 m
Total length of sewage pipe, diameter of pipe 60-100 cm	152 m	188 m	89 m
Length of newly constructed sewage pipe, diameter 60-100 cm	32 m	110 m	75 m
Length of sewage pipe, diameter 60-100 cm needs repair/rehabilitation	0 m	0 m	0 m
Sewerage pipe, diameter of pipe over 100 cm	71 m	35 m	0 m
Length of newly constructed sewage pipe, diameter over 100 cm	9 m	86 m	0 m
Length of sewage pipe, diameter over 100 cm needs repair/rehabilitation	0 m	0 m	0 m

6.3 Drainage and Bridges

Construction Type	2006		2007		2008	
	place(s)	Length	place(s)	Length	place(s)	Length
Single pipe culvert	90	405m	100	441 m	97	570 m
Double-pipe culvert	13	78m	18	114 m	17	171 m
Box pipe culvert	3	17m	1	10m	4	47 m
Wooden bridge	77	1,822m	52	1,312m	47	1,196 m
Concrete bridge	3	56m	1	32m	3	155 m
Bale bridge	1	80m	1	85m	3	155 m
Spillway construction	0	0m	0	0m	3	2,045 m

6.4 Services in the Province

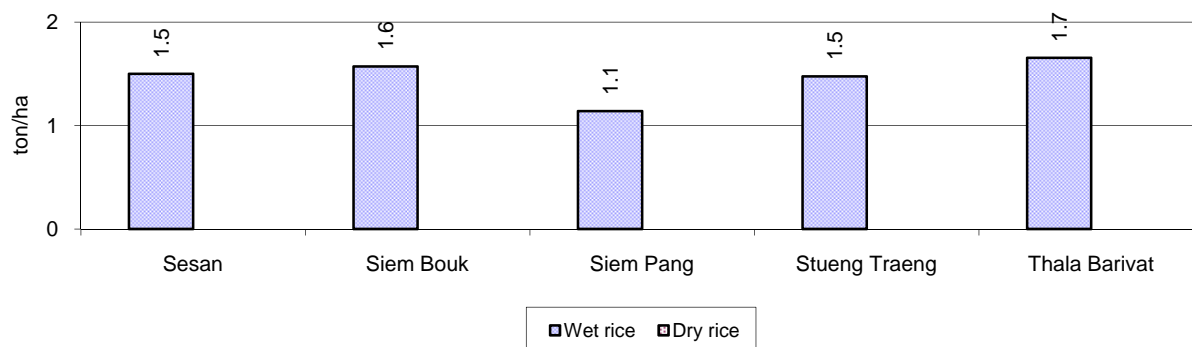
Descriptions	Number of places by year		
	2006	2007	2008
Public			
Electricity generating stations	30	75	5
Health clinics	3	3	4
Private			
Bicycle and motorcycle repair places	50	59	128
Agricultural machinery, tools and equipment repair places	5	5	6
Electronic tool repair places	14	14	14
Battery-charging services	89	94	83
Handicraft places, wooden furniture and forest by-products	28	24	35
Other handicraft places (excluding furniture)	17	20	15
Small-scale services (hairstylist, phone service, massage, Karaoke, etc)	99	87	85
Small-scale food shop businesses (Food, groceries, drink shop, etc)	44	94	98
Small-scale rice mills	988	1,279	1,199
Medium or large-scale rice mills	3	3	4
Small-scale markets	3	2	3
Large-scale market	1	0	0
Alcohol refinery places	62	86	99
Pharmacies and small drug stores	17	11	13
Hotels	3	3	4
Guest houses	8	10	18
Restaurants	8	8	11
Gasoline stations	5	5	6

6.5 Agriculture

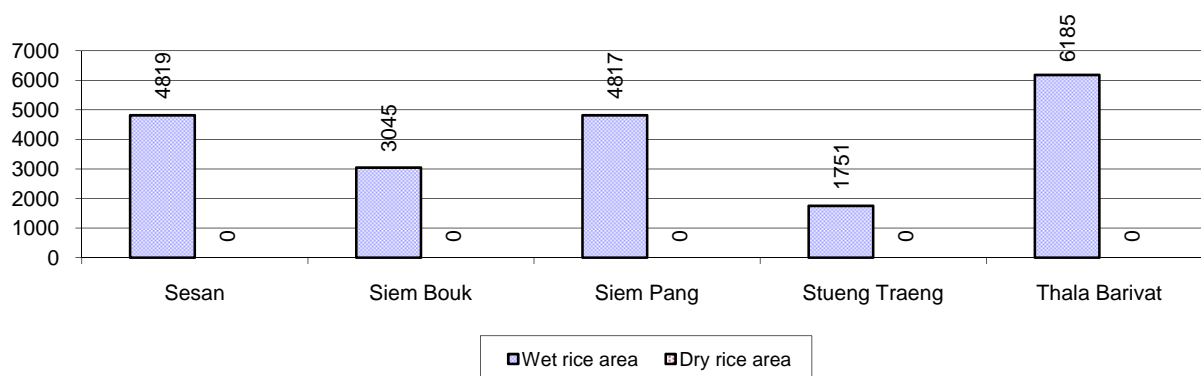
6.5.1 Rice cultivation in the Province, 2006-2008

Description	2006	2007	2008
Total dry rice land area	10 ha	0 ha	0 ha
Actual dry rice cultivation area	0 ha	0 ha	0 ha
% actual cultivation to total land	0%	-%	-%
Total dry rice production	- tonne(s)	- tonne(s)	- tonne(s)
Average dry rice yield	- tonne(s)/ha	- tonne(s)/ha	- tonne(s)/ha
Total wet rice land area	23,137 ha	22,961 ha	23,750 ha
Actual wet rice cultivation area	20,591 ha	21,653 ha	20,616 ha
% actual cultivation to total land	89 %	94%	87%
Total wet rice production	30,886.65 tonne(s)	34,064.48 tonne(s)	31,105.91 tonne(s)
Average wet rice yield	1.5 tonne(s)/ha	1.6 tonne(s)/ha	1.5 tonne(s)/ha
Total intensive rice land area	8,617 ha	1,390 ha	0 ha
Actual intensive rice cultivation area	12,440 ha	- ha	- ha
Average intensive rice yield	1.5 tonne(s)/ha	- tonne(s)/ha	- tonne(s)/ha
Actual upland rice cultivation area	2,309 ha	3,133 ha	4,332 ha
Total upland rice production	2,612 tonne(s)	3,866 tonne(s)	4,921 tonne(s)
Average upland rice yield	1.1 tonne(s)/ha	1.2 tonne(s)/ha	1.1 tonne(s)/ha

6.5.2 Estimated wet and dry Season Rice Yield in tonne(s)/Ha, by District, in 2008



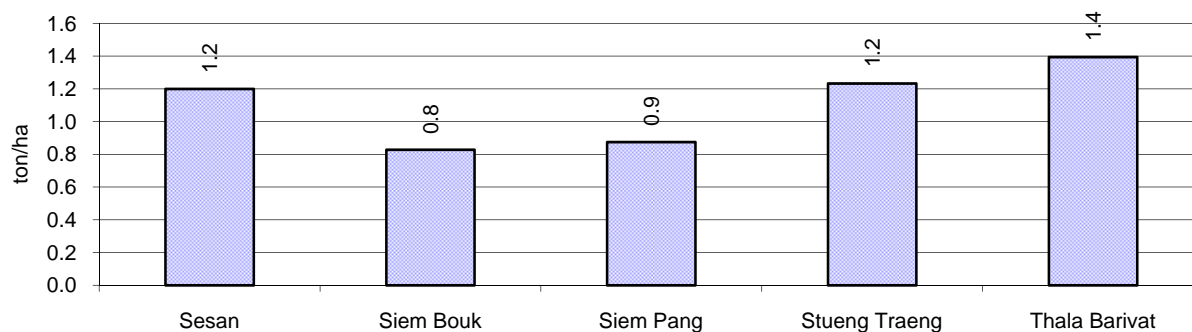
6.5.3 Cultivated wet and dry Season Rice areas in Ha, by District, in 2008



6.5.4 Estimated intensive Rice Yields in tonnes/Ha, by District, for 2008

There were no intensive rice cultivated in this province in 2008

6.5.5 Estimated upland Rice Yield in tonnes/Ha, by District, for 2008

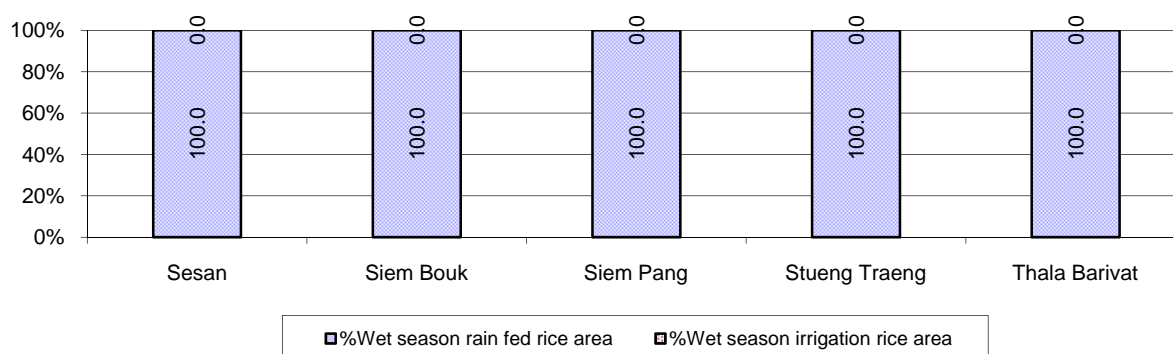


6.5.6 Wet season Rice irrigation, 2006-2008

Description		2006 %	2007 %	2008	
				%	Number
Total area of wet season rain fed rice land		97%	100%	100 %	20,616 ha
Percentage of wet season rice land that is irrigated; and for 2008 area in Ha		3 %	0 %	0 %	0 ha
Where	Area irrigated from canal/dam	7 %	71 %	- %	0 ha
	Area irrigated from river, stream, lake, natural pond	93 %	29 %	- %	0 ha
	Area irrigated from drilled well	0 %	0 %	- %	0 ha
	Area irrigated from dug pond	0 %	0 %	- %	0 ha

6.5.7 Water sources for wet Season Rice Cultivation, by District, in 2008

This chart shows the percentage of wet season rice cultivation receiving water from rain (natural) and from irrigation.



6.5.8 Access to Irrigation

Description	2006 %	2007 %	2008	
			%	Number
Families who have access to irrigation water	1%	0%	0%	0 families
Families who have irrigation wells	0%	0%	0%	0 families

Note: Calculated against the total number of families are rice farmers

6.5.9 Number of Irrigation Wells, 2006-2008

Description	2006	2007	2008
Number of irrigation wells	3 wells	0 wells	0 wells

6.5.10 Percentage of Families with access to (supplemental) Irrigation for wet Season Rice cultivation, by District, in 2008

There were no families with access to (supplemental) irrigation for wet season rice cultivation in this province in 2008

Note: % of families, with access to irrigation is calculated against the total number of families, whose main occupation is rice farming. Irrigated wet rice land area is calculated against the total actual wet rice land cultivated areas

6.5.11 Irrigation Wells, by District, in 2008

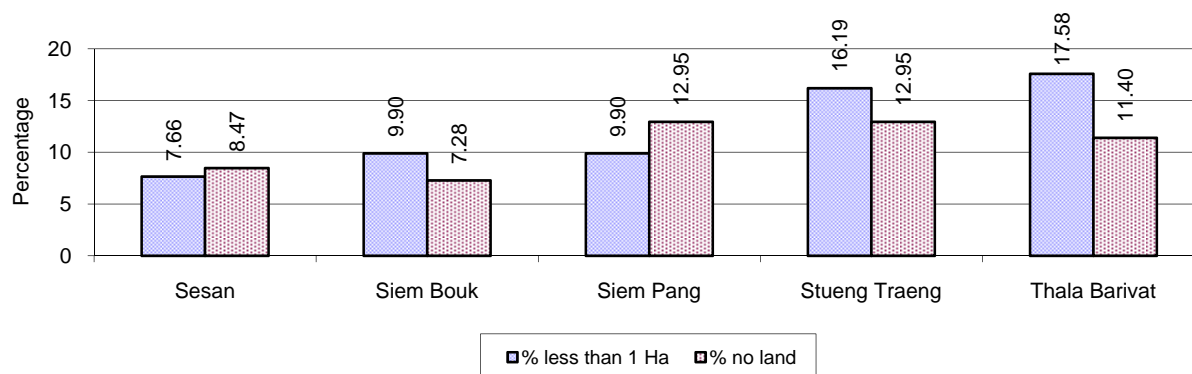
There were no irrigation wells in this province in 2008

6.5.12 Farmers owning less than one hectare of Rice Land

Description	2006 %	2007 %	2008	
			%	Number
Families who have less than one hectare of rice land	24%	11%	12%	2,070 families
Families who do not own any rice land	16%	11%	10%	1,731 families

Note: Calculated on basis of total number of families who are rice farming

6.5.13 Percentage of Farmers with less than one Hectare or no Rice Land, by District, in 2008

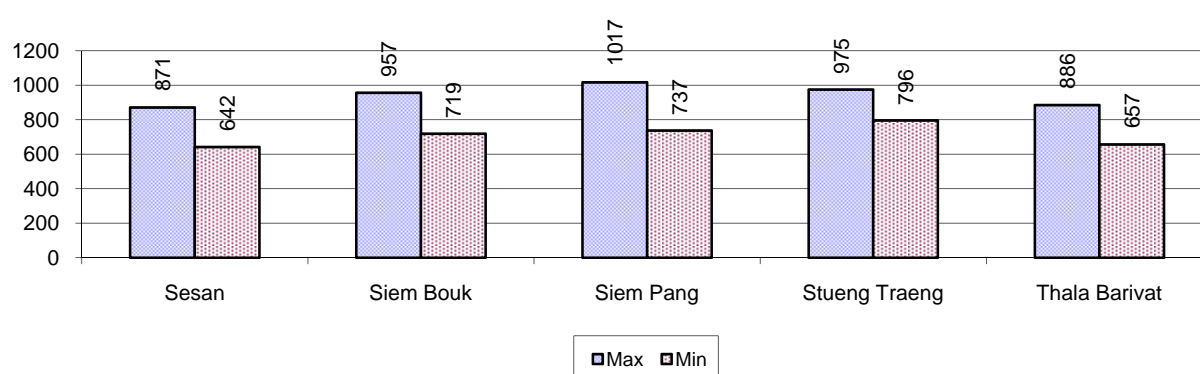


Note: Calculated on basis of total number of families who are rice farming

6.5.14 Average farm-gate Prices of Rice, 2006-2008

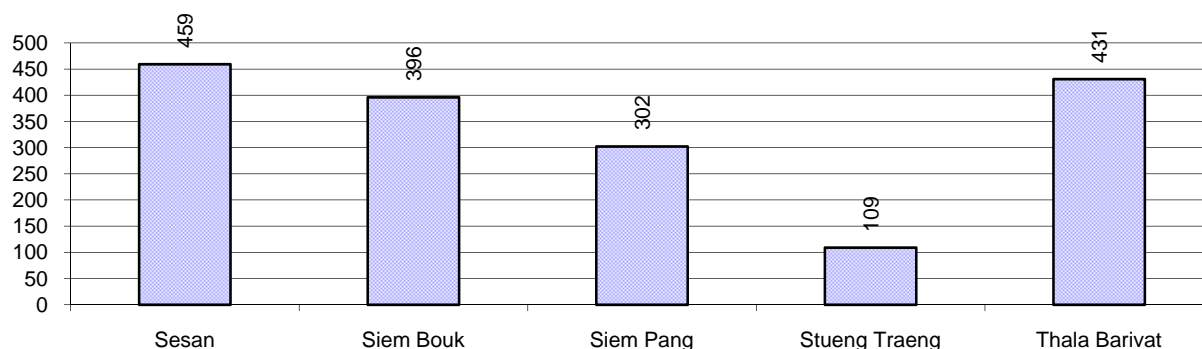
Description	2006	2007	2008
Maximum average farm gate price	511 Riels/Kg	667 Riels/Kg	927 Riels/Kg
Minimum average farm gate price	405 Riels/Kg	538 Riels/Kg	695 Riels/Kg
Average farm gate price	458 Riels/Kg	602 Riels/Kg	811 Riels/Kg
Average rice production per person	467 Kg/person	408 Kg/person	339 Kg/person

6.5.15 Minimum and maximum farm-gate Prices of Rice in Riel/kg, by District, in 2008



6.5.16 Production of Paddy in Kg/Person, by District, in 2008

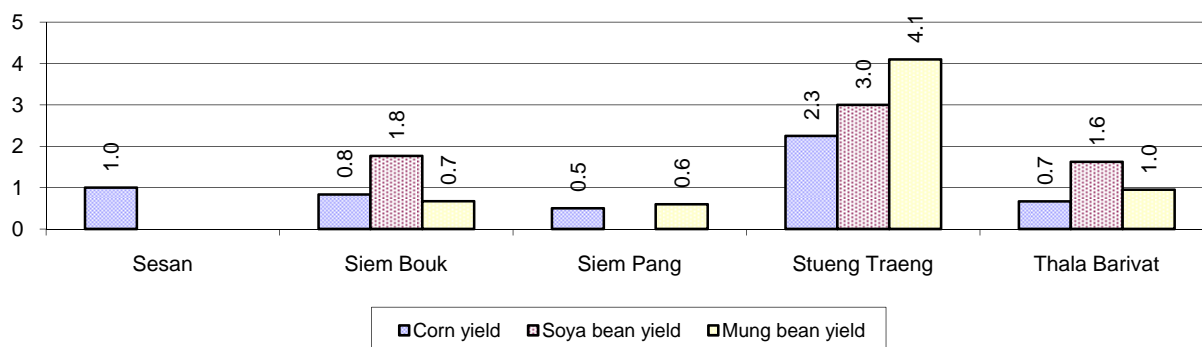
This table shows how much paddy (harvested rice) is produced in a year in a district, in kg per person.



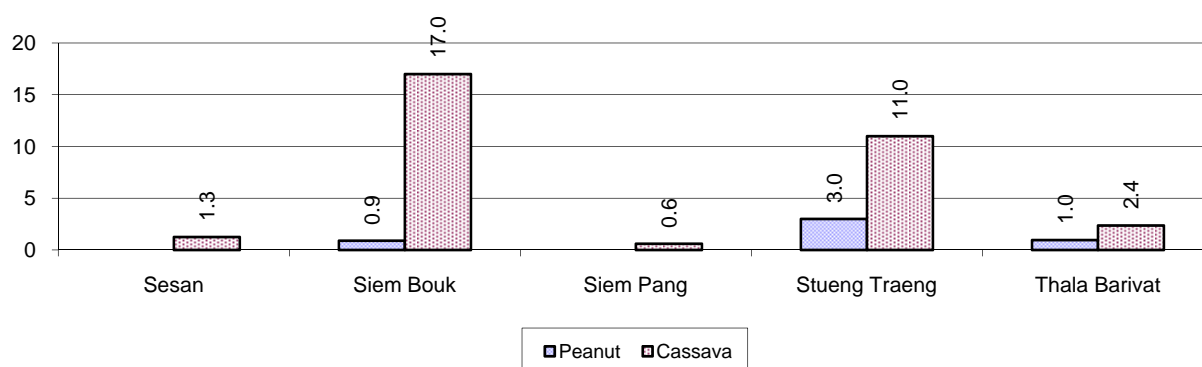
6.5.17 Production of other Crops, 2006-2008

Crops	2006	2007	2008
Corn cultivation area	307 ha	105 ha	79 ha
Estimated corn yield	1.3 tonne(s)/ha	1.3 tonne(s)/ha	1.0 tonne(s)/ha
Estimated corn production	390 tonne(s)	141 tonne(s)	82 tonne(s)
Soya bean cultivation area	70 ha	436 ha	1,350 ha
Estimated Soya bean yield	1.6 tonne(s)/ha	1.7 tonne(s)/ha	1.9 tonne(s)/ha
Estimated Soya bean production	113 tonne(s)	736 tonne(s)	2,498 tonne(s)
Mungbean cultivation area	87 ha	100 ha	148 ha
Estimated Mungbean yield	1.6 tonne(s)/ha	1.4 tonne(s)/ha	1.5 tonne(s)/ha
Estimated Mungbean production	143 tonne(s)	142 tonne(s)	216 tonne(s)
Peanut cultivation area	13 ha	14 ha	25 ha
Estimated Peanut yield	1.2 tonne(s)/ha	1.0 tonne(s)/ha	1.2 tonne(s)/ha
Estimated Peanut production	16 tonne(s)	14 tonne(s)	29 tonne(s)
Cassava cultivation area	26 ha	33 ha	1,414 ha
Estimated Cassava yield	3.9 tonne(s)/ha	12.8 tonne(s)/ha	7.1 tonne(s)/ha
Estimated Cassava production	102 tonne(s)	419 tonne(s)	10,028 tonne(s)
Sweet potatoes cultivation area	19 ha	22 ha	16 ha
Estimated Sweet potatoes yield	1.2 tonne(s)/ha	1.1 tonne(s)/ha	1.0 tonne(s)/ha
Estimated Sweet potatoes production	22 tonne(s)	23 tonne(s)	16 tonne(s)
Sesame cultivation area	9 ha	36 ha	47 ha
Estimated Sesame yield	1.4 tonne(s)/ha	1.3 tonne(s)/ha	1.0 tonne(s)/ha
Estimated Sesame production	12 tonne(s)	46 tonne(s)	48 tonne(s)

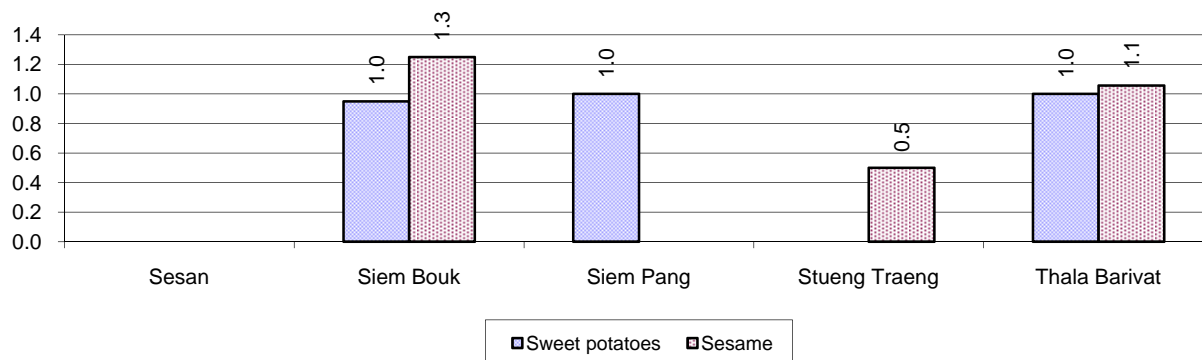
6.5.18 Yields of Corn, Soya beans and Mungbeans in tonne(s)/ha, by District, in 2008



6.5.19 Yields of Peanuts and Cassava in tonne(s)/ha by District, in 2008



6.5.20 Yields of Sweet Potatoes and Sesame in tonne(s)/ha, by District, in 2008



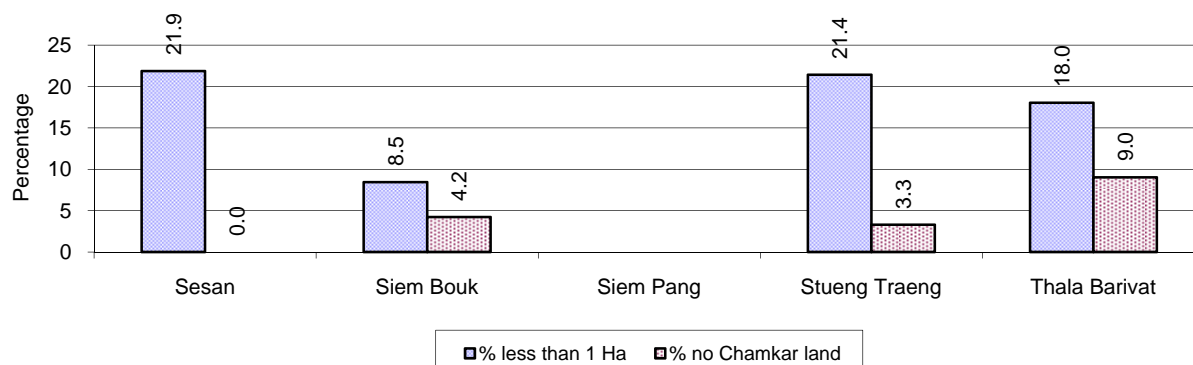
6.5.21 Percentage Farmers who own less than 1 Ha or no Chamkar land

Description	2006 %	2007 %	2008	
			%	Number
Families, who own less than 1ha of Chamkar land	28%	20%	20%	160 families
Families, with no Chamkar land	9%	7%	4%	34 families

Note 1: Calculated as a percentage of the total number of families whose main occupation is Chamkar (not rice) farming

Note 2: Chamkar land is no-rice land, i.e. other crops

6.5.22 Percentage Farmers owning less than 1 ha or no Chamkar land, by District, in 2008



Note: Percentage is calculated among families, who Chamkar farm as a main occupation, not the total population of the district.

6.5.23 Percentage of Families raising Cattle/Buffalo, 2006-2008

Description	2006	2007	2008	
	%	%	%	Number
Families raising cattle/buffalo	58%	59%	59%	12,264 families
Families raising cattle/buffalo as labor forces	52%	55%	54%	11,141 families

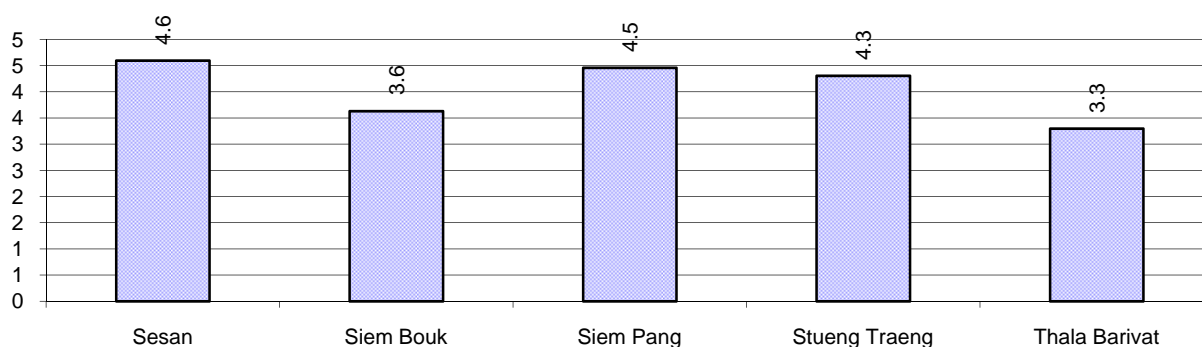
Note: Calculated against the total number of families.

6.5.24 Number of Cattle/buffalo being raised, 2006-2008

Description	2006	2007	2008
Total number of cattle/buffalo	45,669 head(s)	49,542 head(s)	48,891 head(s)
Average cattle/buffalo per families	4.1 head(s)/families	4.2 head(s)/families	4 head(s)/families

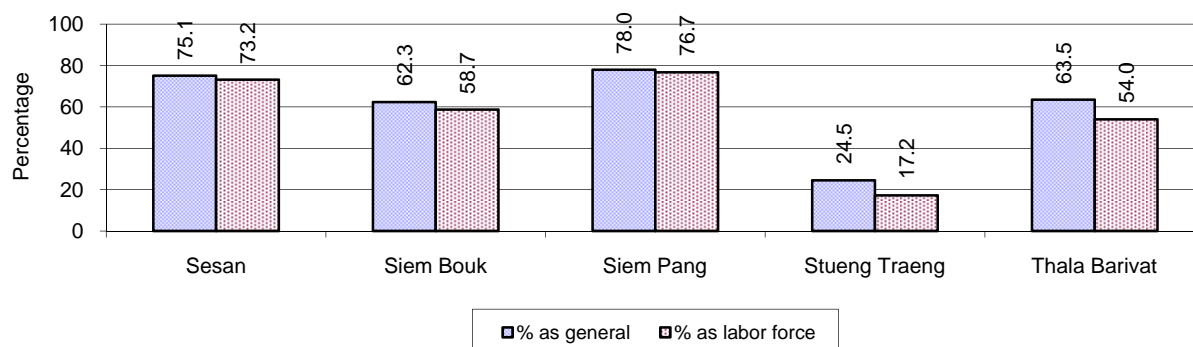
Note: Calculated by dividing total number of cattle/buffalo by total number of cattle/buffalo raising families

6.5.25 Average number of Cattle/Buffalo per Family, by District, in 2008



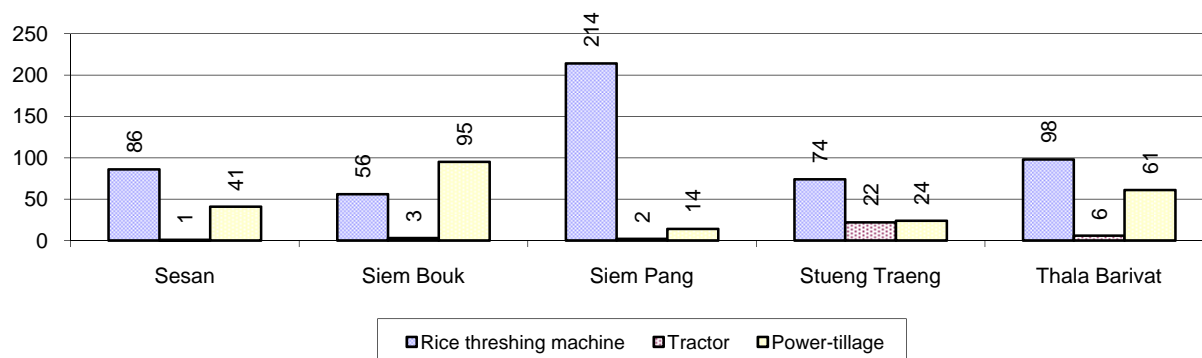
Note: Calculated by dividing total number of cattle/buffalo by total number of cattle/buffalo raising families

6.5.26 Percentage Families raising Cattle/Buffalo, for general and labor purposes in 2008, by Commune



Note: Calculated using the total number of families raising cattle/buffalo against the total number of families.

6.5.27 Type and number of agricultural Machines, by District, in 2008

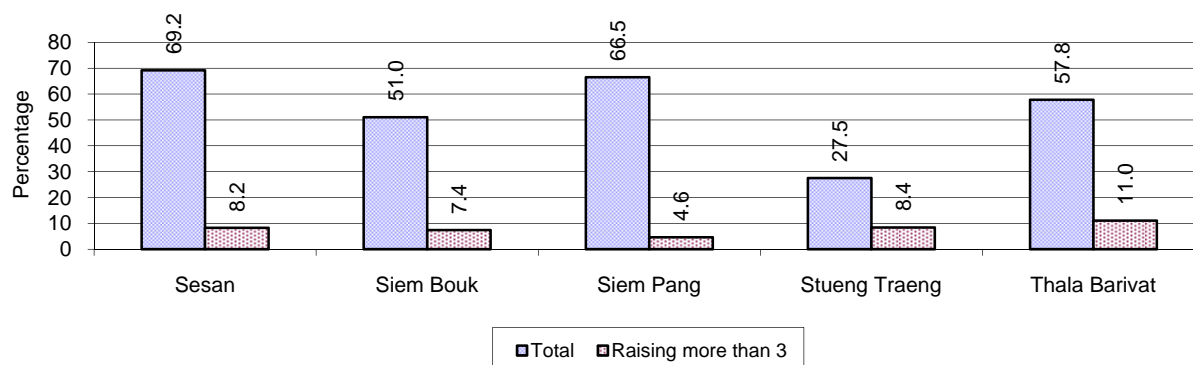


6.5.28 Livestock-producing Households, 2006-2008

Description	2006 %	2007 %	2008	
			%	Number
Total number of families raising pigs	59%	53%	53%	11,090 families
number of families raising more than 3 pigs	13%	8%	8%	1,732 families
Total number of families raising chickens	81%	81%	82%	17,075 families
number of families raising more than 3 chickens	70%	69%	73%	15,257 families
Total number of families raising ducks	18%	17%	18%	3,692 families
number of families raising more than 5 ducks	11%	9%	11%	2,288 families
Total number of families raising goats or sheep	0%	0%	0%	14 families
Total number of families raising horses	0%	0%	0%	17 families

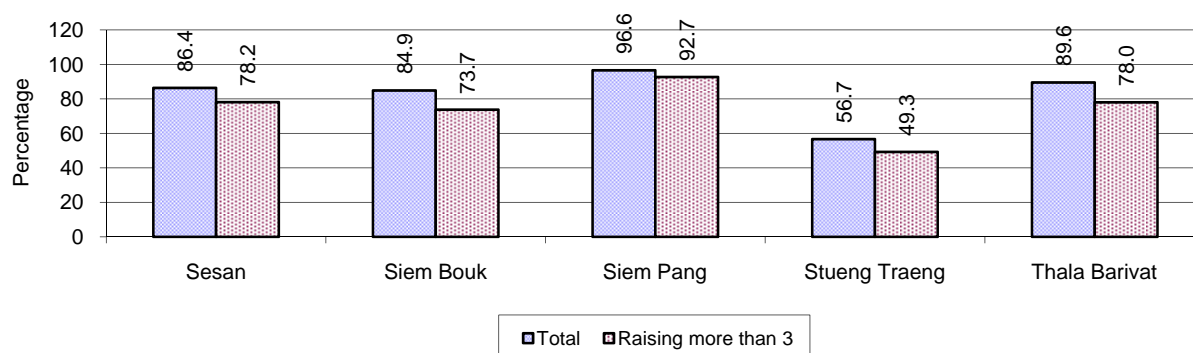
Note: Calculated against the total number of families

6.5.29 Percentage Families raising Pigs, by District, in 2008



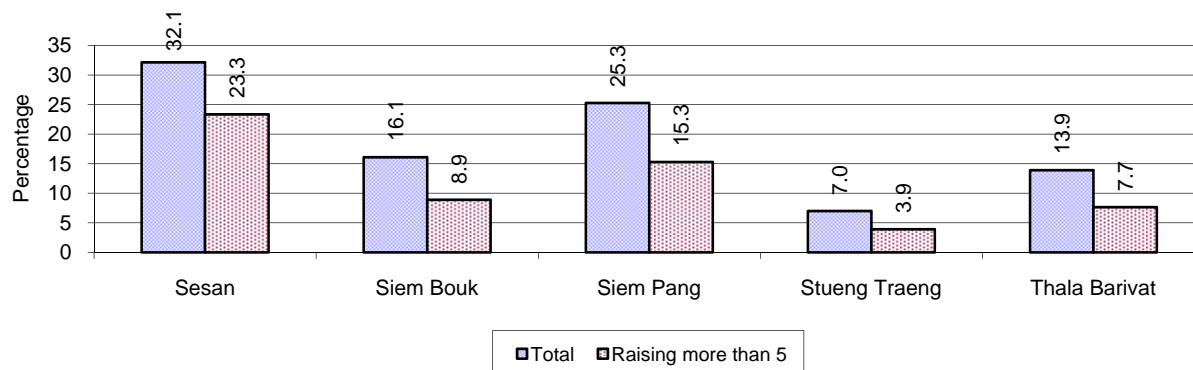
Note: Calculated against the total number of families in the district

6.5.30 Percentage Families raising Chickens, by District, in 2008



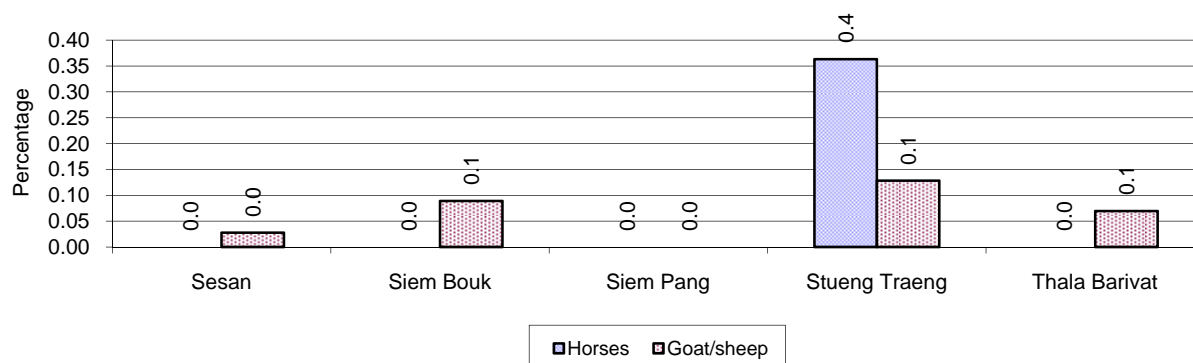
Note: Calculated against the total number of families in the district

6.5.31 Percentage Families raising Ducks, by District, in 2008



Note: Calculated against the total number of families in the district

6.5.32 Percentage Families raising Horses, Goats or Sheep, by District, in 2008

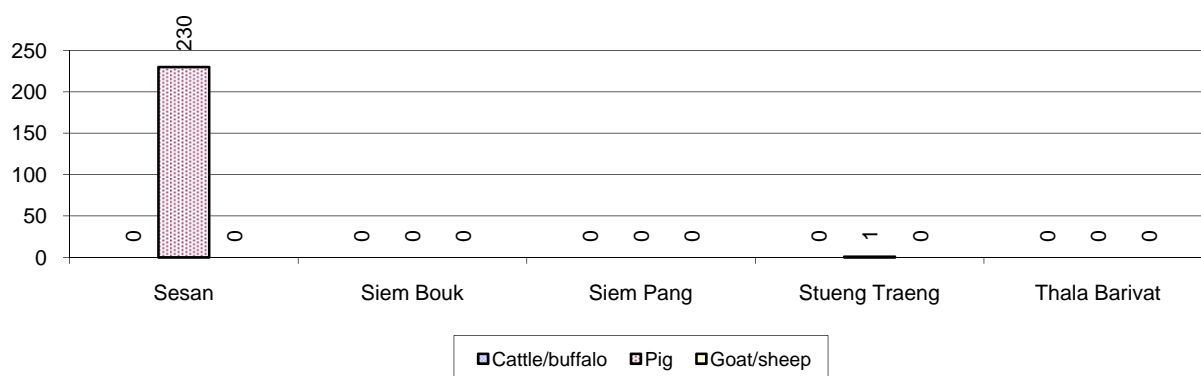


Note: Calculated against the total number of families in the district

6.5.33 Livestock Farms, 2006-2008

Description	2006	2007	2008
Number of cattle/buffalo farms	3 farm(s)	0 farm(s)	0 farm(s)
Number of pig farms	36 farm(s)	0 farm(s)	231 farm(s)
Number of goat/sheep farms	0 farm(s)	0 farm(s)	0 farm(s)
Number of chicken farms	28 farm(s)	0 farm(s)	0 farm(s)
Number of duck farms	5 farm(s)	0 farm(s)	0 farm(s)

6.5.34 Number Livestock Farms, by District in 2008



Note: Number of farms are recorded by the village chief, not by counting number of livestock in each farm

6.5.35 Number Chicken and Duck Farms, by District, for 2008

There were no chicken and duck farms in this province in 2008

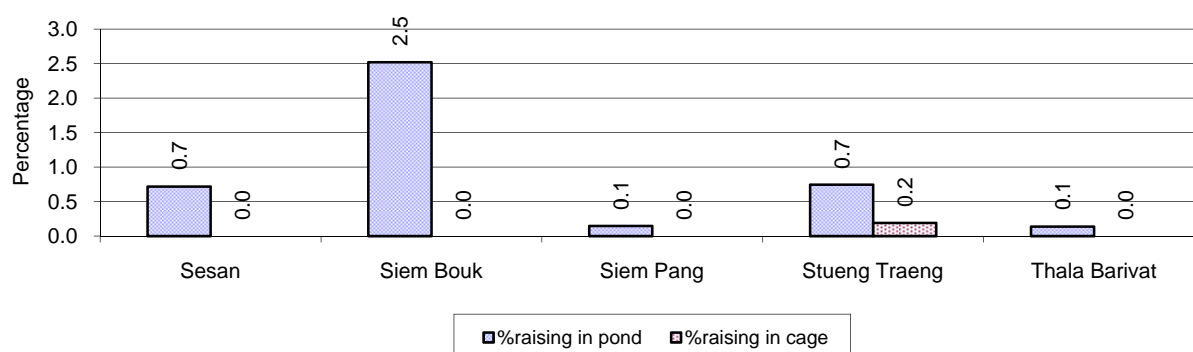
Note: Number of farm places recorded by village chief, not by counting number of livestock in each farm

6.5.36 Families raising Fish, 2006-2008

Description	2006	2007	2008
Total number of families raising fish	83 families	126 families	168 families
% families raising fish	0%	1%	1%
Number families raising fish in pond	60 families	110 families	159 families
% families raising fish in pond	0%	1 %	1%
Number fish pond	62 pond(s)	113 pond(s)	167 pond(s)
No. of ponds per family	1.0 pond/families	1.0 pond/families	1.1 pond/families
Number of families raising fish in cage	23 families	16 families	9 families
%families raising fish in cage	0 %	0 %	0%
Number of fish cage	23 cage(s)	16 cage(s)	9 cage(s)
No. of fish cage per family	1.0 cage /families	1.0 cage /families	1.0 cage /families

Note: % of families raising fish or fish in ponds or cages is calculated a percentage of the total number of families.

6.5.37 Percentage of Families raising Fish, by District, in 2008



Note: Calculated as a percentage of the total number of families in the commune.

6.5.38 Shrimp and Prawn Farming, 2006-2008

Description	2006	2007	2008
Number of families raising shrimps	0 families	0 families	0 families
% Families raising shrimps	0%	0%	0%
Number of shrimp ponds	0 pond	0 pond	0 pond
Total area raising shrimps	0 ha	0 ha	0 ha
Area per family	-ha/families	-ha/families	-ha/families
Number of families raising prawns	0 families	0 families	0 families
% families raising prawns	0%	0%	0%
Number prawn ponds	0 pond	0 pond	0 pond
Ponds per families	- pond/families	-pond/families	-pond/families
Number of prawn cages	0 cage	0 cage	0 cage
Cages per families	0 cage /families	0 cage /families	0 cage /families

Note: Percentage of families raising either prawns or shrimp is calculated against the number of families, who do aquaculture farming, NOT the total population.

6.5.39 Numbers of Families raising Shrimps and number of Shrimp Ponds, by District, in 2008

There were no families raising shrimps in this province in 2008

6.5.40 Number of Families raising Prawn and Number of Prawn Ponds/Cages, by District, in 2008

There were no families raising prawn in this province in 2008

7 Social Aspects

7.1 Education

7.1.1 Kindergarten in the Province, 2006-2008

Description	2006	2007	2008
Number of community kindergarten schools	30 school(s)	51 school(s)	70 school(s)
Number of community kindergarten class rooms	30 room(s)	44 room(s)	76 room(s)
Number of community kindergarten classes	83 class(es)	83 class(es)	79 class(es)
Number of community kindergarten teachers	80 person(s)	86 person(s)	84 person(s)
Number of women community kindergarten teachers	80 women	83 women	84 women
Number of state and private kindergarten schools	14 school(s)	16 school(s)	16 school(s)
Number of state and private kindergarten class rooms	15 room(s)	16 room(s)	16 room(s)
Number of state and private kindergarten classes	34 class(es)	16 class(es)	16 class(es)
Number of state and private kindergarten teachers	18 person(s)	19 person(s)	18 person(s)
Number of women state and private kindergarten teachers	18 women	19 women	18 women

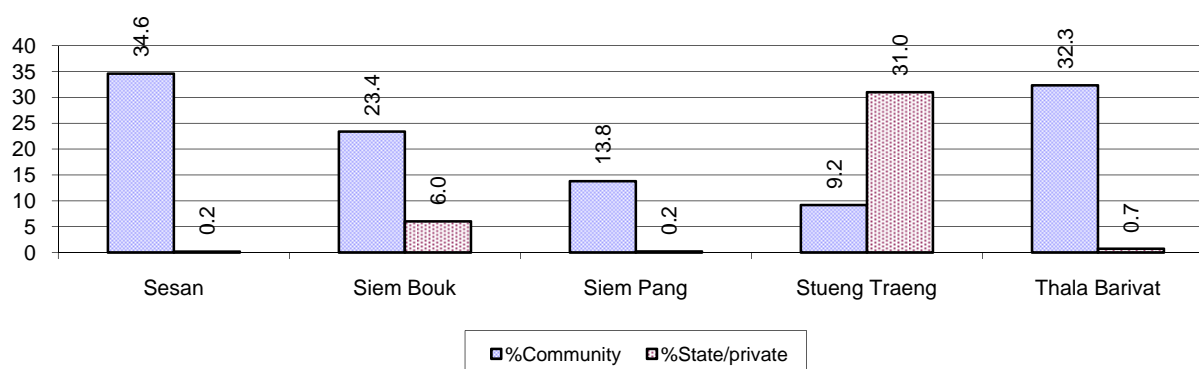
7.1.2 Percentage enrolment at Kindergarten level, 2006-2008

This table shows the percentage of the total 3-5 year old population attending kindergarten.

Description	2006 %	2007 %	2008	
			%	Number
Total percentage of children, 3-5 yrs, go to kindergarten	34%	30%	29%	2,877 person(s)
Percentage of children, 3-5 yrs, go community kindergarten	31%	27%	24%	2,362 person(s)
Percentage children, 3-5 yrs, go state/private kindergarten	3%	4%	5%	515 person(s)

Note: Calculated against the total for that age group

7.1.3 Percentage of Children 3-5 yrs attending Kindergarten, by District, in 2008



7.1.4 Basic Education, 2006-2008

Primary School

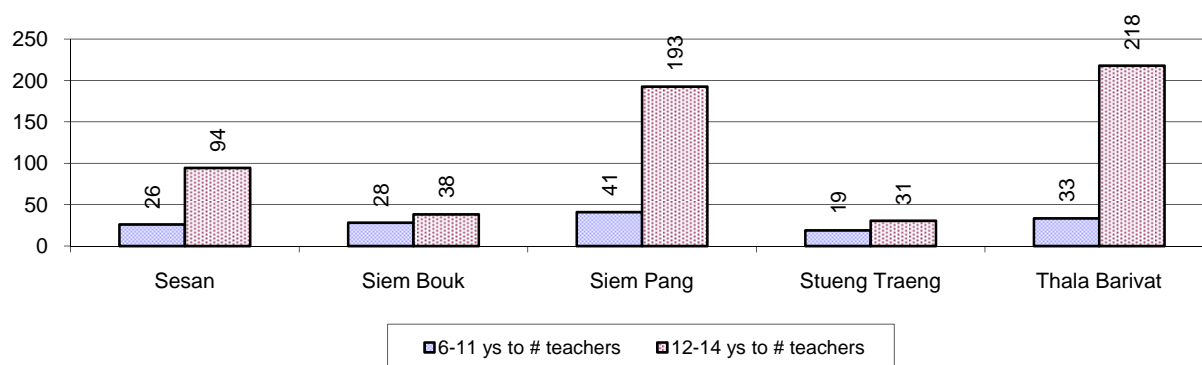
Description	2006	2007	2008
Number of primary schools	139 school(s)	142 school(s)	149 school(s)
Number of primary school rooms	490 room(s)	484 room(s)	497 room(s)
Number of primary classes	654 class(es)	674 class(es)	701 class(es)
Number of primary teachers	535 person(s)	553 person(s)	575 person(s)
Ratio of children 6-11 yrs to school	108	108	108
Ratio of children 6-11 yrs to school room	31	32	32
Ratio of children 6-11 yrs to class	23	23	23
Ratio of children 6-11 yrs to teacher	28	28	28

Note: According to education norm, children 6-11 yrs should attend primary school, while 12-14 yrs should be in lower secondary school, but in reality this varies.

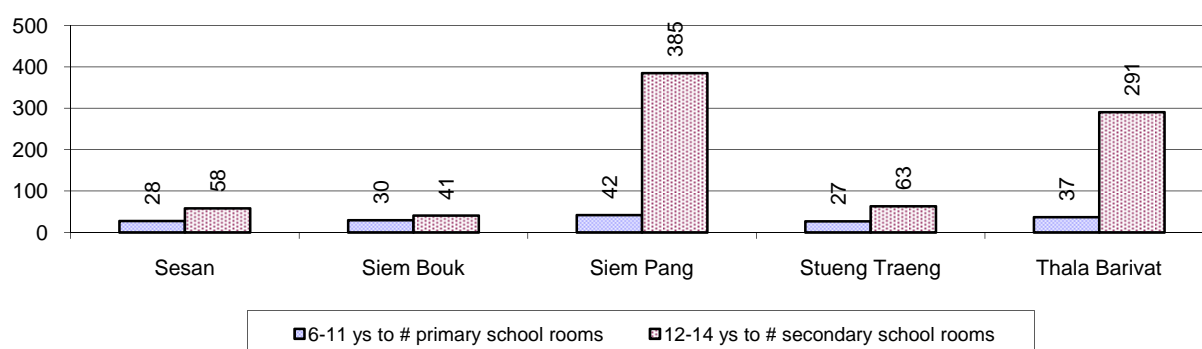
Lower Secondary School

Description	2006	2007	2008
Number of lower secondary schools	13 school(s)	13 school(s)	16 school(s)
Number of lower secondary school rooms	55 room(s)	63 room(s)	91 room(s)
Number of lower secondary classes	50 class(es)	66 class(es)	98 class(es)
Number of lower secondary teachers	101 person(s)	123 person(s)	122 person(s)
Ratio children 12-14 yrs to school	579	585	521
Ratio of children 12-14 yrs to school room	137	121	92
Ratio of children 12-14 yrs to class	151	115	85
Ratio of children 12-14 yrs to teacher	75	62	68

7.1.5 Ratio of 6-11 year old and 12-14 year old Children to number of Teachers, by District, in 2008



7.1.6 Ratio of 6-11 year old and 12-14 year old Children to number of School Rooms, by District, in 2008



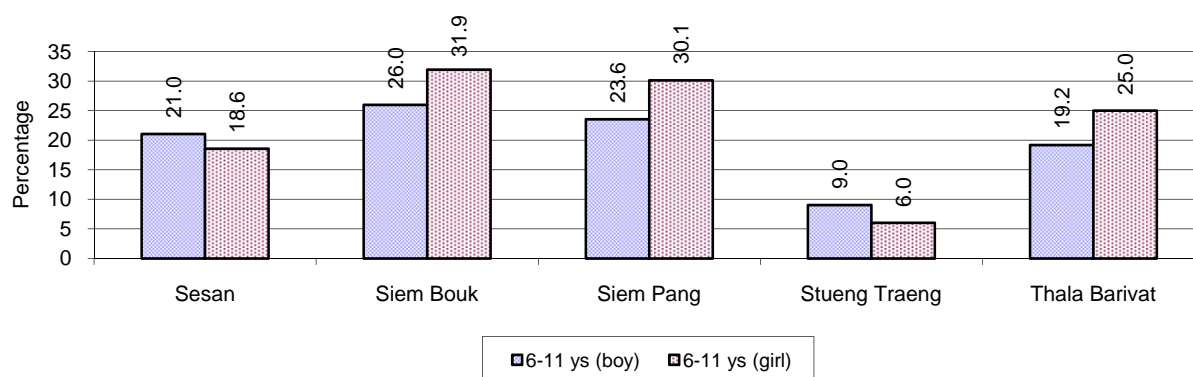
7.1.7 Enrolment status at Primary Level, 2006-2008 one decimal only

Description	2006 %	2007 %	2008	
			%	Number
Total children aged 6-11 years old	15%	15%	15%	16,095 person(s)
Total children aged 6-11 who are in school	81%	77%	79%	12,751 person(s)
Total children aged 6-11 who are not in school	19%	23%	21%	3,344 person(s)
Total girls aged 6-11 years old	15%	15%	15%	8,073 person(s)
Total girls aged 6-11 who are in school	81%	78%	78%	6,273 person(s)
Total girls aged 6-11 who are not in school	19%	22%	22%	1,800 person(s)
Total boys aged 6-11 years old	15%	16%	15%	8,022 person(s)
Total boys aged 6-11 who are in school	80%	77%	81%	6,478 person(s)
Total boys aged 6-11 who are not in school	20%	23%	19%	1,544 person(s)

Note 1: Percentage is calculated on the basis of the total number of children within 6-11 year age group for the first 3 rows and for the total girls and the total boys aged 6-11 yrs.

Note 2: Number of girls aged 6-11 who are in & not in school is calculated against the total number of girls aged 6-11 yrs. Number boys, 6-11 yrs who are in & not in school are calculated against the total number of boys aged 6-11 yrs.

7.1.8 Percentage of 6-11 year old Children not in School, by District, in 2008



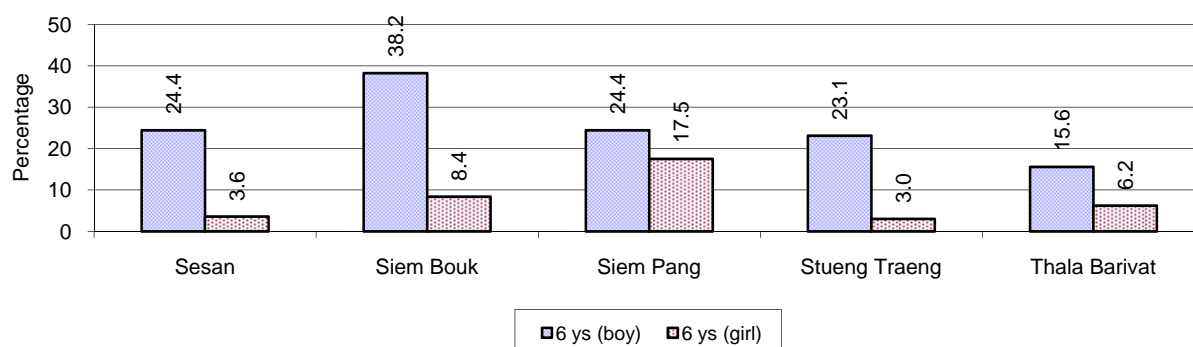
Note: calculated on the basis of the total number of children within 6-11 year age group in the commune.

7.1.9 Enrolment of 6 year old Children, 2006-2008

Description	2006 %	2007 %	2008	
			%	Number
Total % and number of children aged 6 years old	4%	4%	4%	4,085 person(s)
Total % of children aged 6 years old in school	79%	76%	76%	3,089 person(s)
Total % of children aged 6 years old not in school	21%	24%	24%	996 person(s)

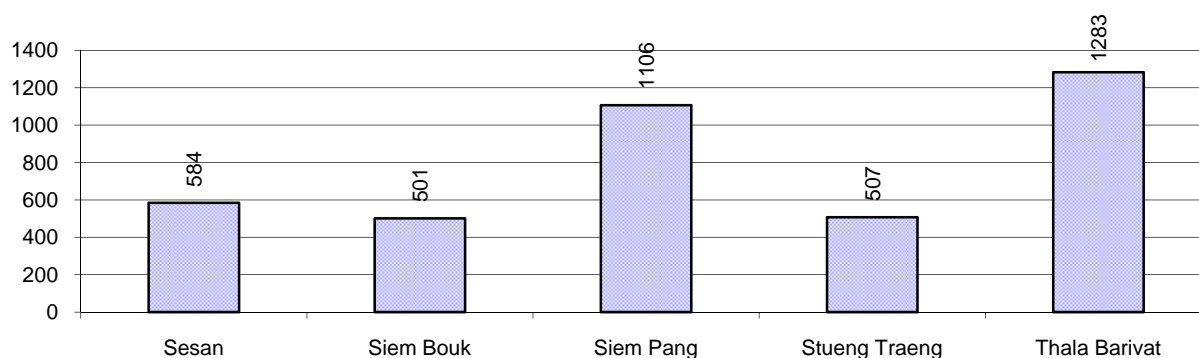
Note: First row calculated as a percentage of total population. Second and third row calculated as a percentage of the total number of 6 year olds.

7.1.10 Percentage of 6 year old Children not in School, by District, in 2008



Note: Calculated as a percentage of total 6 year old population

7.1.11 Number of 5 year old Children in each District in 2008

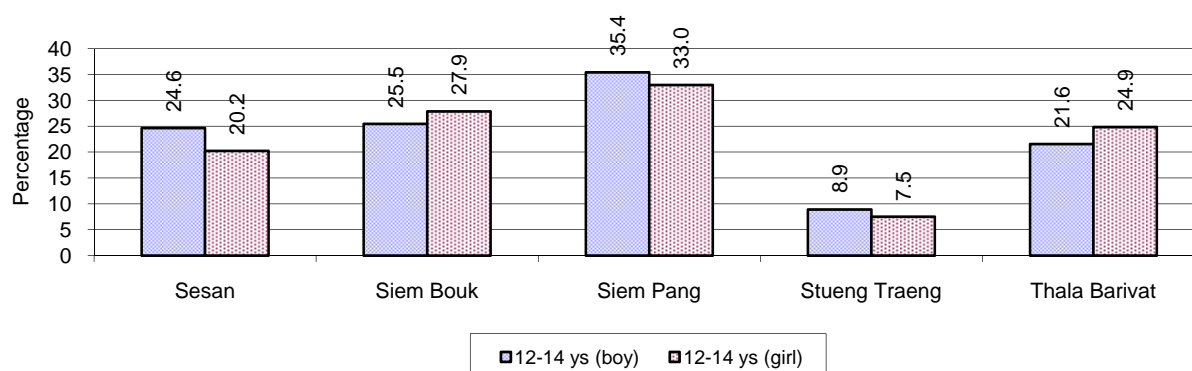


7.1.12 Enrolment at Lower Secondary Level, 2006-2008

Description	2006 %	2007 %	2008	
			%	Number
Total children aged 12-14 years old	8%	8%	8%	8,336 person(s)
Children aged 12-14 years old in school	79%	76%	78%	6,465 person(s)
Children aged 12-14 years old not in school	21%	24%	22%	1,871 person(s)
Total girls aged 12-14 years old	7%	7%	8%	4,178 person(s)
Girls aged 12-14 years old in school	80%	76%	78%	3,242 person(s)
Girls aged 12-14 years old not in school	20%	24%	22%	936 person(s)
Total boys aged 12-14 years old	8%	8%	8%	4,158 person(s)
Boys aged 12-14 years old in school	79%	77%	78%	3,223 person(s)
Boys aged 12-14 years old not in school	21%	23%	22%	935 person(s)

Note: Percentage is calculated on the basis of number of the total number of children within 12-14 yrs group, except for the first row of each section which is calculated on the basis of the total population.

7.1.13 Percentage of 12-14 year olds not in School, by District, in 2008



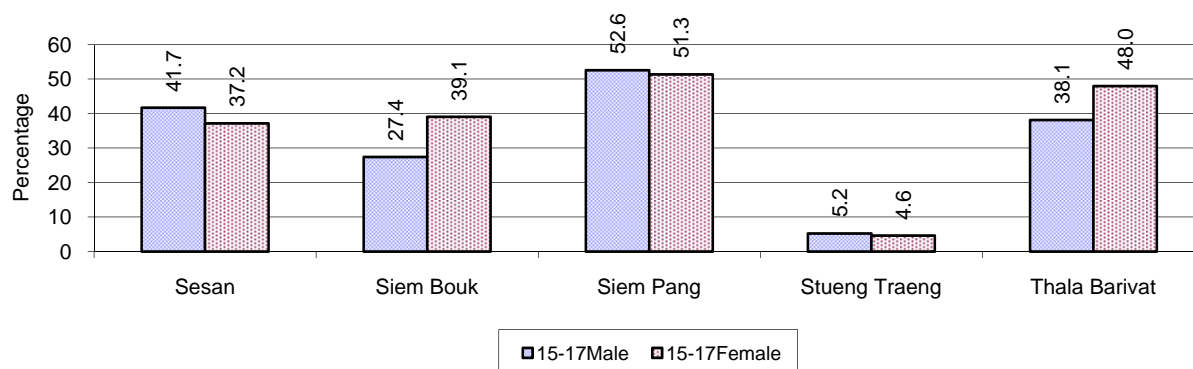
Note: Calculated as a percentage of the total 12-14 year old population in each district

7.1.14 Upper Secondary Schools, 2006-2008

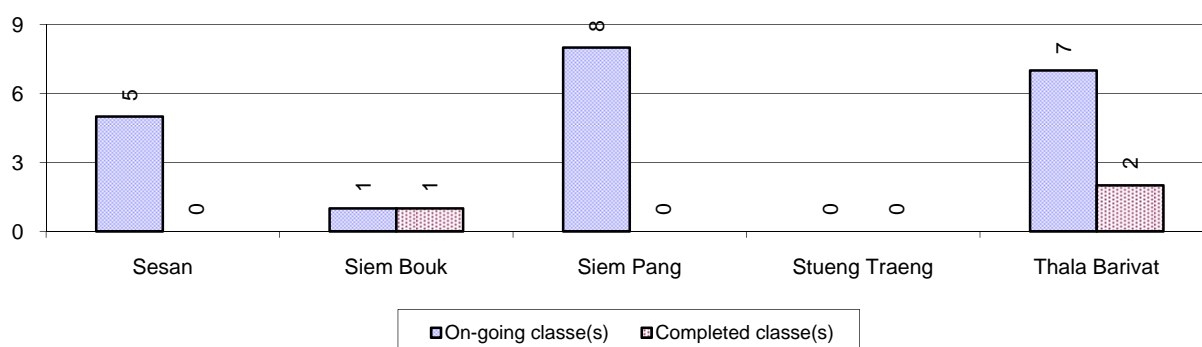
Description	2006	2007	2008
Number of upper secondary schools	2 school(s)	4 school(s)	4 school(s)
Number of upper secondary school rooms	55 room(s)	65 room(s)	50 room(s)
Number of upper secondary classes	72 class(es)	70 class(es)	67 class(es)
Number of upper secondary teachers	116 person(s)	89 person(s)	93 person(s)
Ratio of 15-17 yr olds to number of school	4,366	2,087	2,278
Ratio of 15-17 yr olds to number of school room	159	128	182
Ratio of 15-17 yr olds to number of classes	121	119	136
Ratio of 15-17 yr olds to number of teacher	75	94	98

7.1.15 Enrolment of 15-17 year old teenagers, 2006-2008

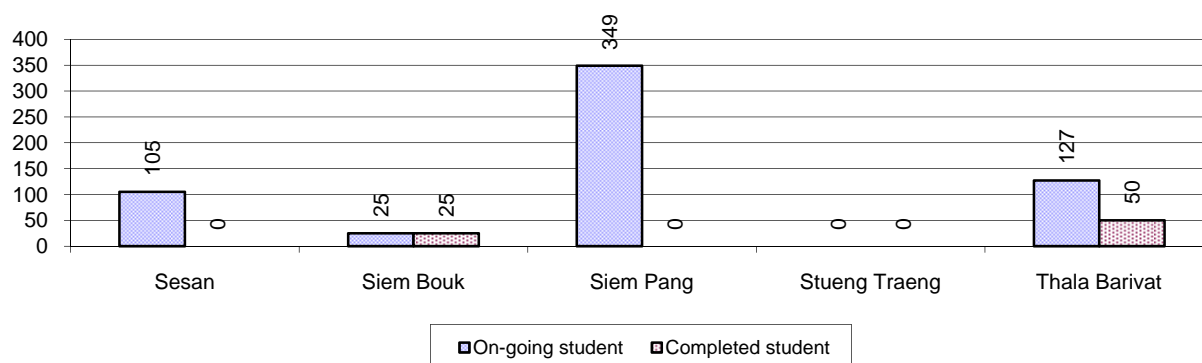
Description	2006	2007	2008
Number of teenage, 15-17 years old	8,731 person(s)	8,349 person(s)	9,112 person(s)
Number of teenage, 15-17 years old, who are not studying	2,396 person(s)	2,637 person(s)	2,799 person(s)
Percentage of teenage, 15-17 years old not studying	27%	32%	31%

7.1.16 Percentage of 15-17 year old Teenagers not at School, by District, in 2008**7.1.17 Literacy Classes as of 2008**

Literacy classes	Organized by:		Other Program(s)	Total
	PDoEYS	NGOs		
Number of On-going literacy classes	10 class(es)	10 class(es)	1 class(es)	21 class(e(s)
Number of literacy students in on-going classes	212 person(s)	369 person(s)	25 person(s)	606 person(s)
Completed literacy class(es)	3 classes	0 classes	0 classes	3 classes
Number of literacy students that have completed literacy classes	75 person(s)	0 person(s)	0 person(s)	75 person(s)
Number of students that passed	62 person(s)	0 person(s)	0 person(s)	62 person(s)

7.1.18 Number of on-going and completed Literacy Classes, by District, in 2008

7.1.19 Students of on-going & completed Literacy Classes, by District, in 2008

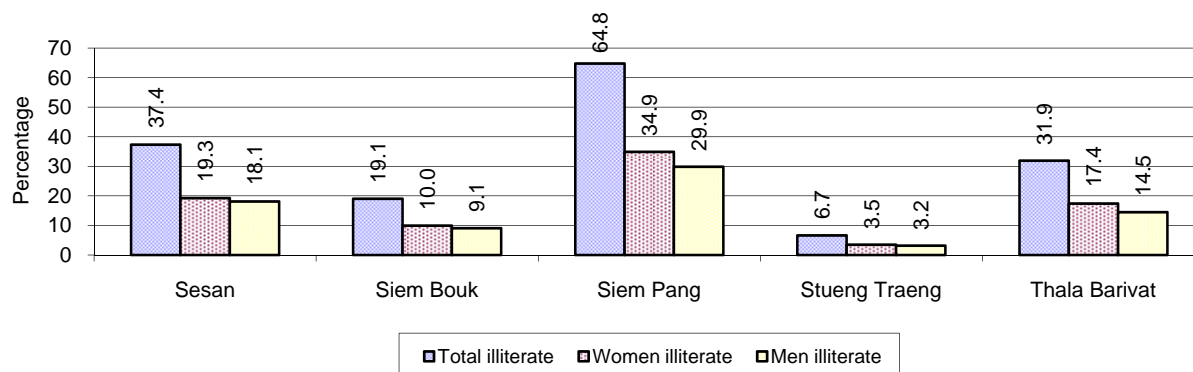


7.1.20 Percentage of illiterate People between 15-60, 2006-2008

Illiteracy Status	2006 %	2007 %	2008	
			%	Number
Illiterate people, 15-60 years old	31%	29%	29%	17,701 person(s)
Illiterate females, 15-60 years old	15%	15%	16%	9,454 person(s)
Illiterate people, 15-17 years old	16%	15%	15%	1,397 person(s)
Illiterate females, 15-17 years old	7%	7%	7%	676 person(s)
Illiterate people, 18-24 years old	28%	25%	23%	3,132 person(s)
Illiterate females, 18-24 years old	14%	14%	12%	1,649 person(s)
Illiterate people, 25-60 years old	35%	33%	35%	13,172 person(s)
Illiterate females, 25-60 years old	18%	18%	19%	7,129 person(s)

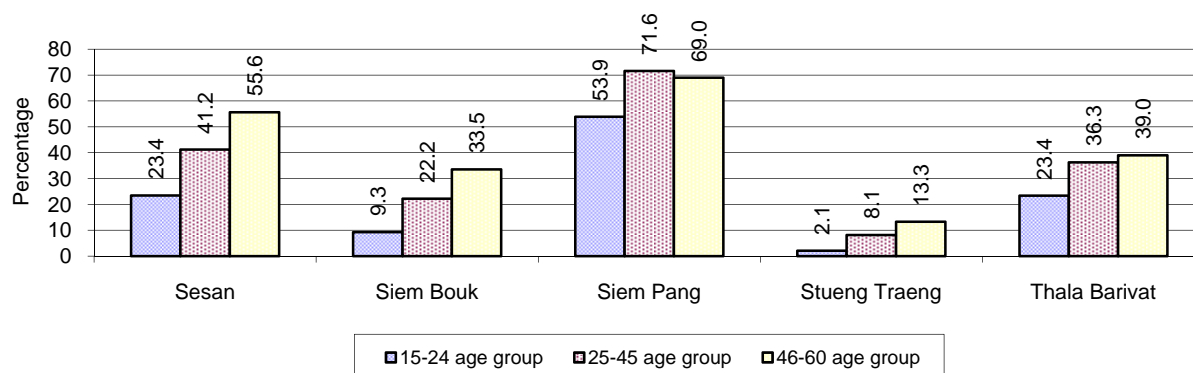
Note: Percentage is calculated on the basis of number of people in age each group.

7.1.21 Percentage illiterate People among 15-60 yrs old, by District, in 2008



Note: Percentages are calculated on the basis of number of people in that age group.

7.1.22 Percentage illiterate People for 15-24 yrs, 25-45 yrs and 46-60 yrs, by District, in 2008



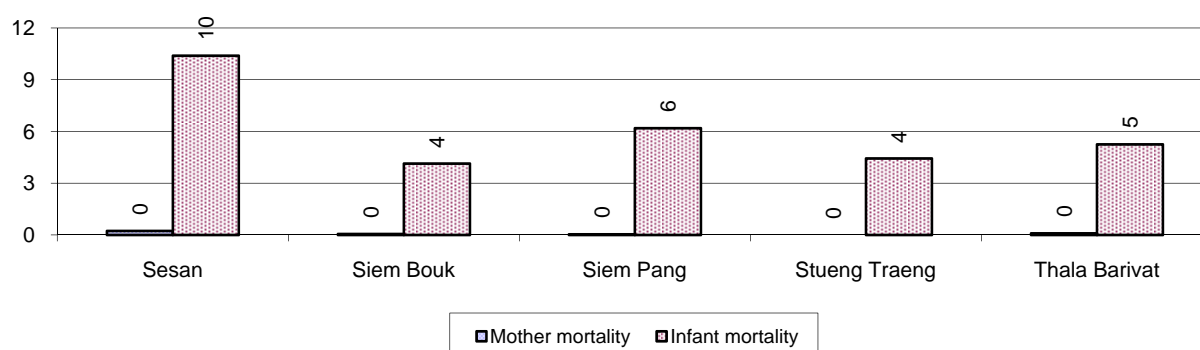
Note: Percentage of illiterate people in each age group is calculated on the basis of number of people in that age group.

7.2 Health

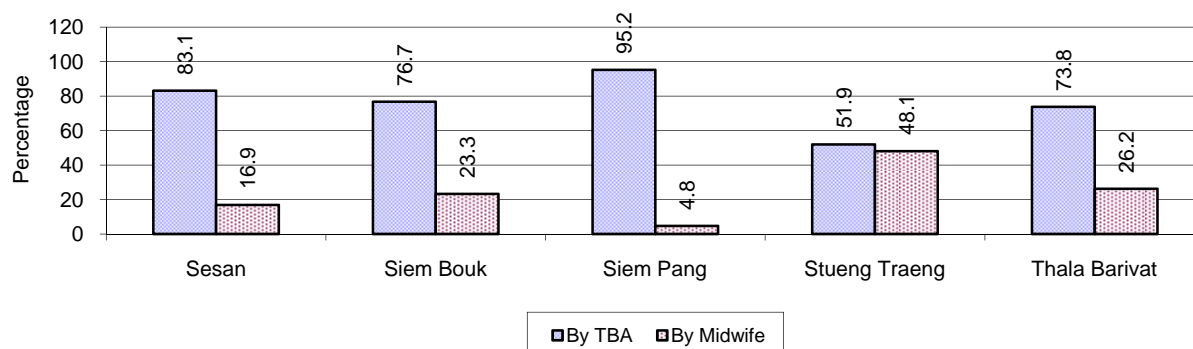
7.2.1 Health Situation of Women and Children, 2006-2008

Description	2006	2007	2008
Number families with a birth during the year	1,785 families	1,904 families	2,037 families
Number of women who had their baby delivered by a Traditional Birth Attendant	1,426 person(s)	1,523 person(s)	1,570 person(s)
Percentage of women who had their baby delivered by a Traditional Birth Attendant	80 %	80 %	77 %
Number of women who had their baby delivered by a midwife	359 person(s)	381 person(s)	467 person(s)
Percentage of women had their baby delivered by a midwife	20 %	20 %	23 %
Number of mothers who died within 1 month of giving birth	18 person(s)	14 person(s)	11 person(s)
Mothers who died within 1 month of giving birth per 100,000 families having a delivery	1,008	735	540
Number of infants born during the year	1,792 person(s)	1,914 person(s)	2,083 person(s)
Number of Infants who died within 1 month	68 person(s)	81 person(s)	63 person(s)
Infants mortality within 1 month per 1,000 births	38	42	30
Number of children who died below the age of 5.	135 person(s)	116 person(s)	74 person(s)
Number of infants, aged 9-12 months, born during the year	956 person(s)	809 person(s)	1,070 person(s)
Nr. infants, aged 9-12 months, not receiving full immunization	33 person(s)	28 person(s)	80 person(s)
% of 9-12 months infants, not receiving full immunization	3 %	3 %	7 %

7.2.2 Mothers dying within 0 days to 1 month of giving Birth and Infants dying within 1 month in 2008, by District in 2008

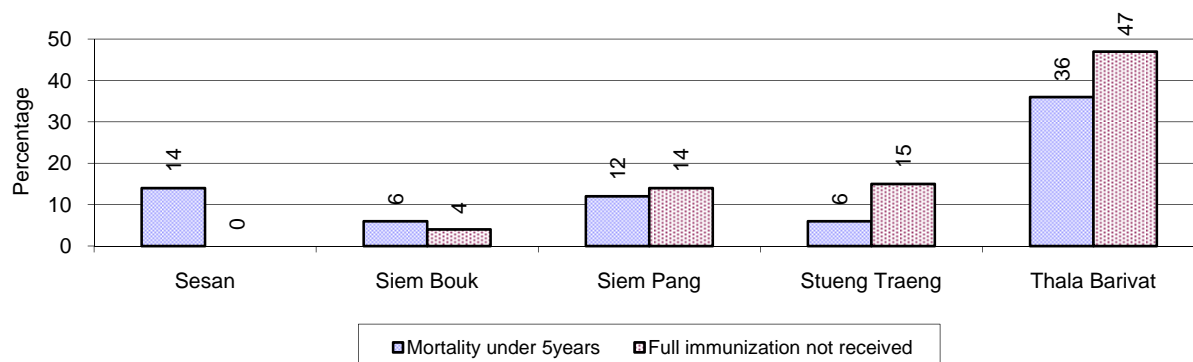


7.2.3 Percentage of Women delivering with a TBA or Midwife, by District in 2008



Note: Calculated as a percentage of total deliveries

7.2.4 Percentage of Children dying below 5 & of 9-12 months not receiving full Immunization, by District in 2008



Note: Mortality rate calculated as a percentage of the total 5 year old population. Lack of immunization received calculated as a percentage of the total number 9-12 months olds.

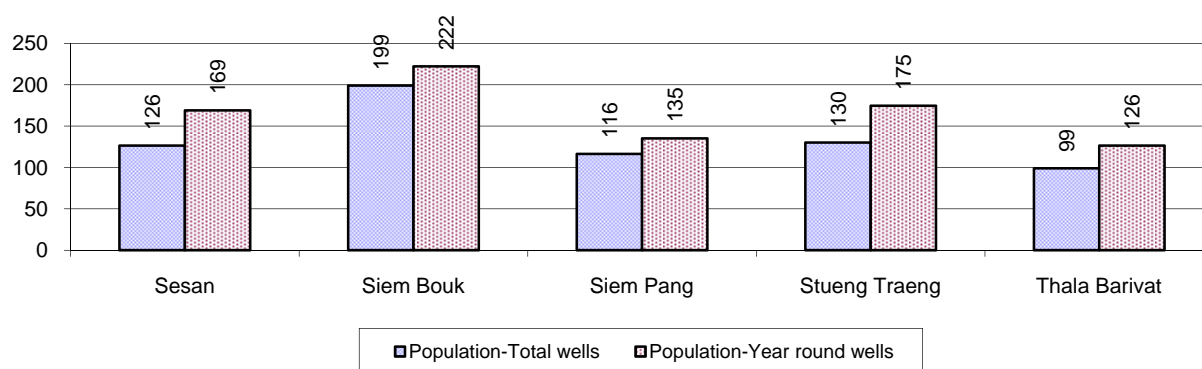
7.3 Water and Sanitation

7.3.1 Number of different types of Wells, 2006-2008

Type of wells	Number of wells by year		
	2006	2007	2008
<i>Total number of pumped or mixed wells</i>	548	646	645
Year-round usable pumped or mixed wells	480	540	514
Dry season unusable pump or mixed wells	68	106	131
Pump or mixed wells needing repair/rehabilitation	120	134	134
<i>Total number of ring wells</i>	198	232	228
Year-round usable ring wells	160	174	179
Dry season unusable ring wells	38	58	49
Ring wells needing repair/rehabilitation	47	49	46
<i>Total number of unprotected dug wells</i>	92	91	108
Year-round usable unprotected dug wells	65	77	90
Dry season unusable unprotected dug wells	27	14	18

Ring wells: dug wells with cement ring as lining

7.3.2 Ratio of People to Wells, by District in 2008

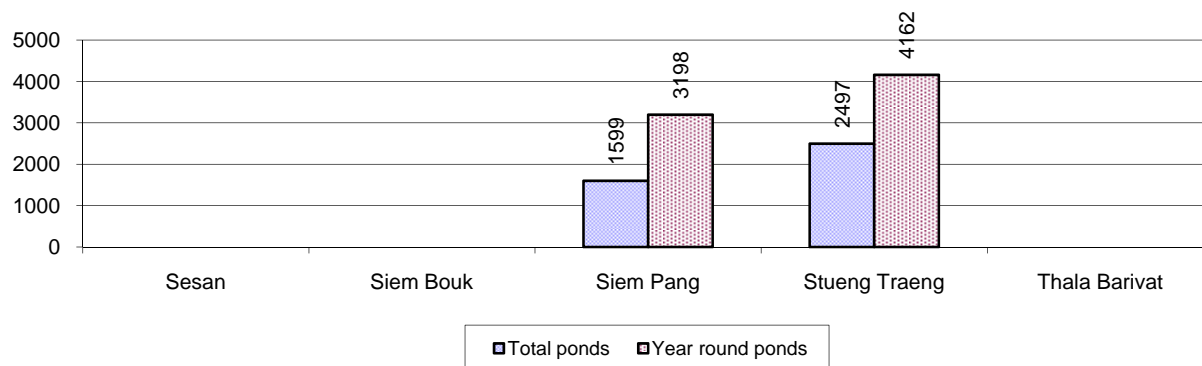


Note: Year-round wells excluding unprotected wells

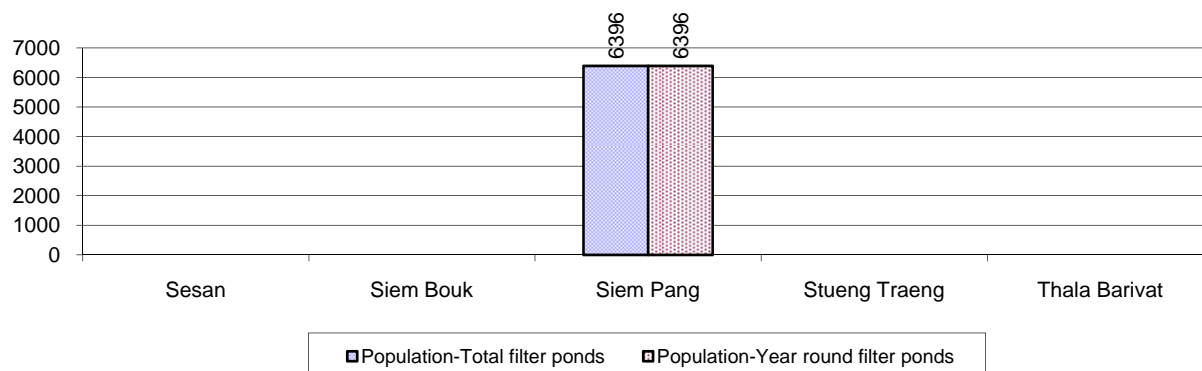
7.3.3 Potable Water Ponds, 2006-2008

Type of Pond	2006	2007	2008
<i>Total number of normal-type ponds</i>	15 pond	25 pond	22 pond
Year-round usable normal-type ponds	12 pond	16 pond	12 pond
Dry season unusable normal-type ponds	3 pond	9 pond	10 pond
Normal-type ponds needing repair/rehabilitation	7 pond	5 pond	3 pond
<i>Total number of filter ponds</i>	1 pond	0 pond	3 pond
Year-round usable filter ponds	0 pond	0 pond	3 pond
Filter ponds, dry season unusable	1 pond	0 pond	0 pond
Filter ponds needing repair/rehabilitate	1 pond	3 pond	0 pond

7.3.4 Ratio of People to normal Ponds, by District in 2008



7.3.5 Ratio of People to Filter Ponds, by District, in 2008

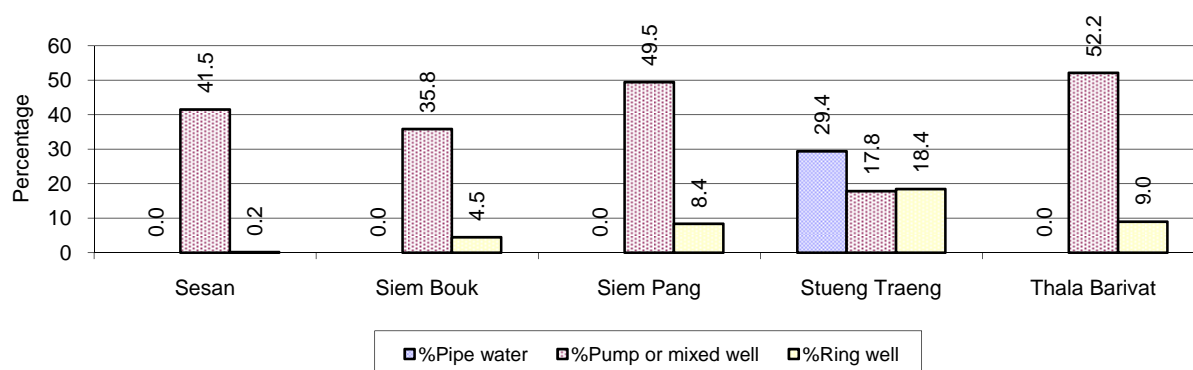


7.3.6 Source of potable Water for Households, 2006-2008

Water sources	2006 %	2007 %	2008	
			%	Number
Families using water from purification system	6%	3 %	7 %	1,376 families
Families using water from pump, mixed wells	31%	40 %	40 %	8,227 families
Families using water from ring wells and open dug wells	11%	10 %	9 %	1,825 families
Families using water from pond	0%	1 %	0 %	31 families
Families using water from rain water storage	4%	3 %	2 %	467 families
Families using water from rivers, lakes, natural ponds and reservoirs	47%	43 %	43 %	8,893 families

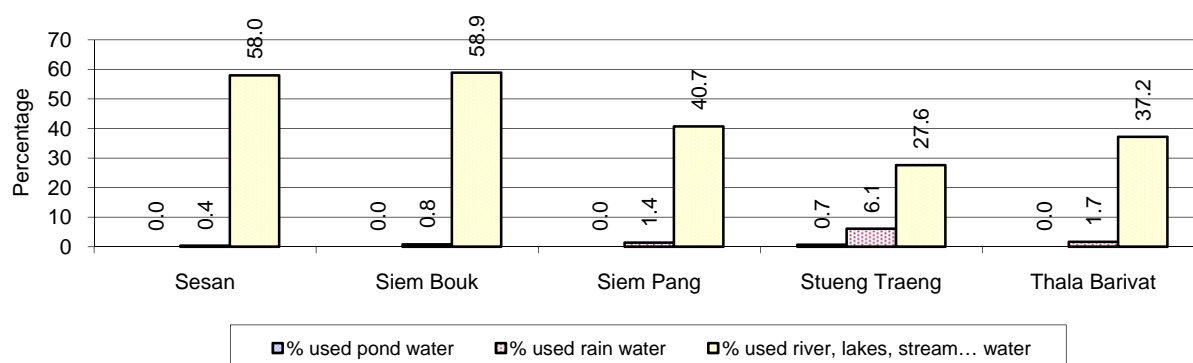
Note: Calculated as a percentage of the total number of families.

7.3.7 Percentage Families using different Water Sources, by District in 2008



Note: Calculated as a percentage of the total number of families in each district

7.3.8 Percentage Families using Water from Rain Water Storage, Ponds and natural Sources (rivers/lakes/natural ponds/reservoirs), by District 2008



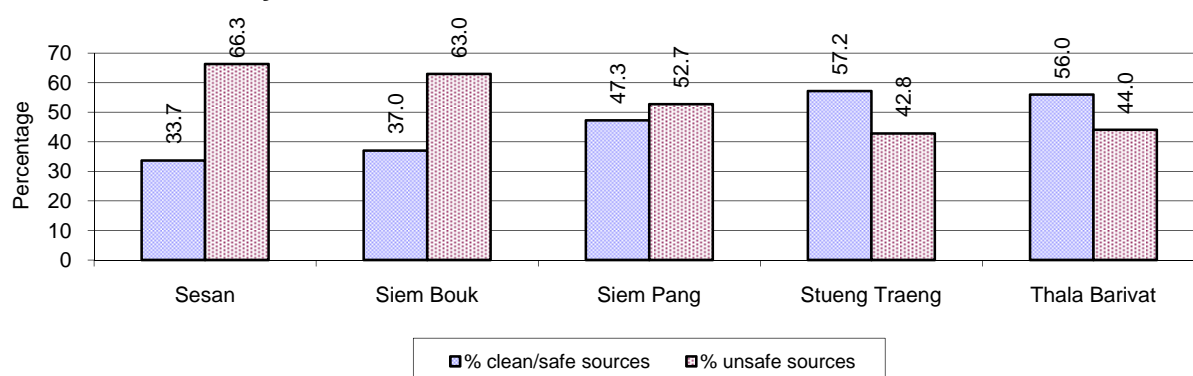
Note: Calculated as a percentage of the total number of families in each district

7.3.9 Drinking Water Sources in the dry Season, 2006-2008

Percentage Families that get drinking water from:	2006 %	2007 %	2008	
			%	Number
from clean/safe sources	52 %	49 %	48 %	9,968 families
from unsafe sources	48 %	51 %	52 %	10,851 families

Note: Calculated as a percentage of the total number of families.

7.3.10 Percentage Families using safe and unsafe Water Sources in the dry Season, by District in 2008



Note: Calculated as a percentage of the total number of families in each district.

7.3.11 Drinking Water Purification by Households, 2006-2008

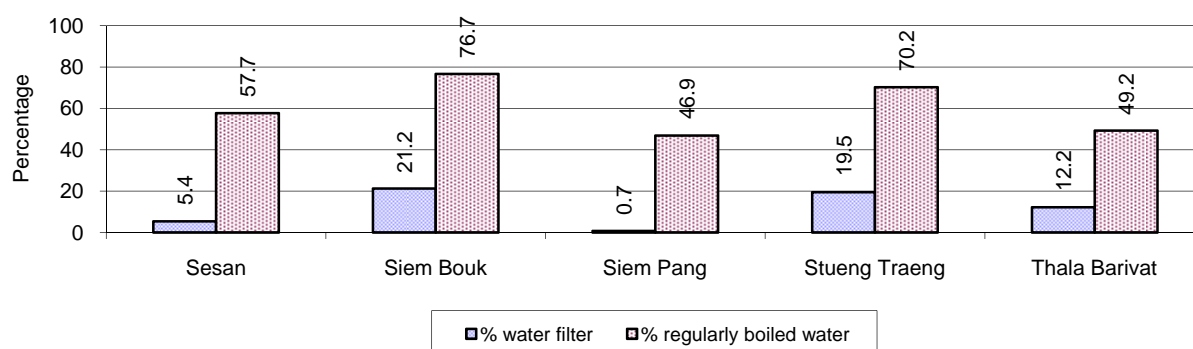
This table shows the different ways families make water safe for drinking.

Families, who:	2006	2007	2008	
	%	%	%	Number
Filter water for drinking	13%	12%	12 %	2,550 families
Boil water for drinking	62%	58%	59 %	12,382 families

Note: Calculated as a percentage of the total number of families

7.3.12 Percentage Families filtering Water or regularly boiling Water, by District in 2008

This graph shows the different ways families make drinking water safe.



Note: Calculated on as a percentage of the total number of families in each district.

7.3.13 Families' access to Water, 2006-2008

Families access to water	2006	2007	2008	
	%	%	%	Number
Families with water at home or in less than 150m	32%	44%	42 %	8,780 families
Families with water 150m or more away from home	25%	27%	36 %	7,538 families

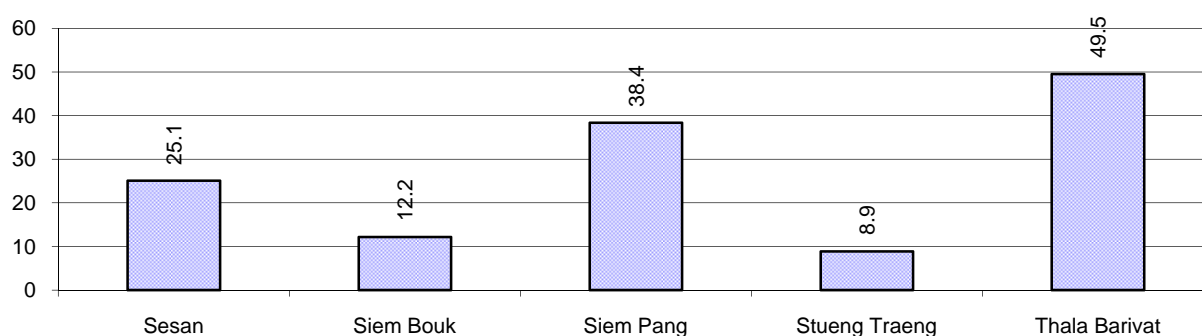
Note: Calculated as a percentage of the total number of families

7.3.14 Ratio of people to Latrines, 2006-2008

Description	2006	2007	2008	
	Ratio	Ratio	Ratio	Number
Ratio of people to latrines	18.2	18.9	18.2	5,834.0

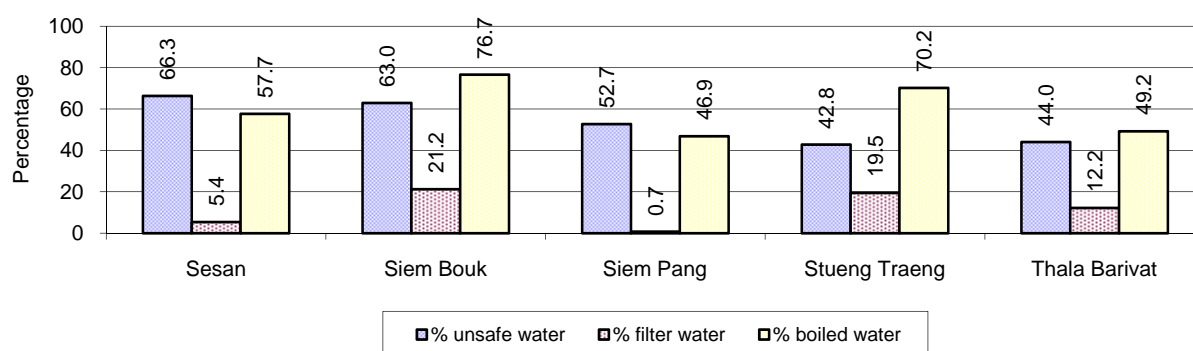
Note: Ratio calculated by dividing the total population by the total number of latrines

7.3.15 Ratio of People to Latrines, by District, in 2008



Note: Ratio calculated by dividing the number of houses with latrines by the total population in a district.

7.3.16 Percentage of Families drinking boiled, filtered or unsafe Water, by District, in 2008



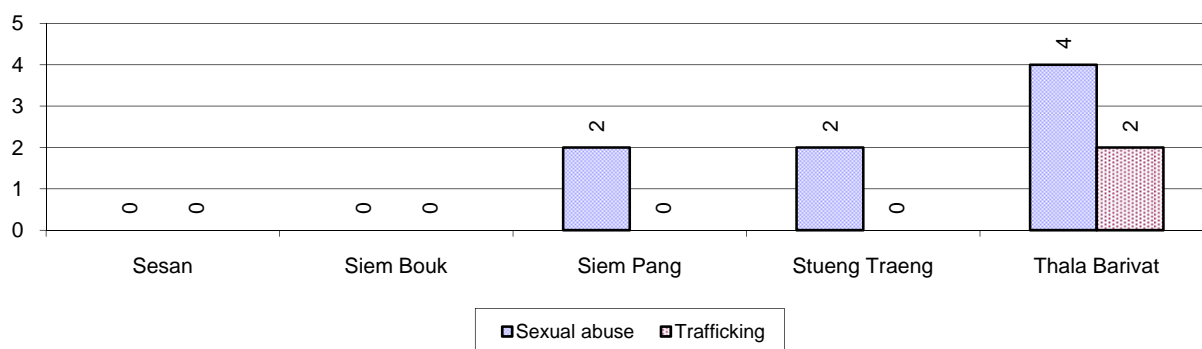
Note: Calculated as a percentage of the total number of families in each district.

7.4 Vulnerable groups

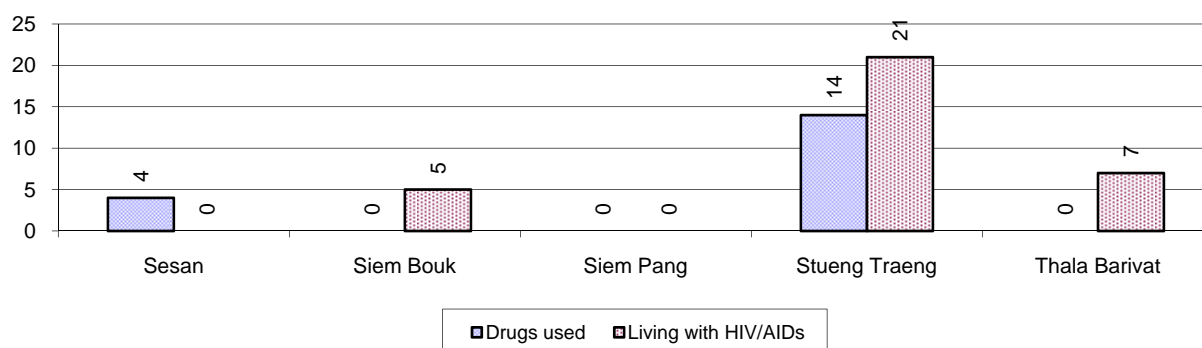
7.4.1 Vulnerable Groups in need of special Protection, 2006-2008

Vulnerable groups	2006	2007	2008
Victims of sexual abuse	12 person(s)	11 person(s)	8 person(s)
Victims of human trafficking	0 person(s)	3 person(s)	2 person(s)
Families with family member(s) using drugs	0 families	3 families	18 families
Families with family member(s) living with HIV/AIDS	27 families	30 families	33 families
Children under 18 yrs old whose parent died of AIDS	26 person(s)	27 person(s)	37 person(s)
Orphaned/abandoned children under 18 yrs old (all cases)	347 person(s)	400 person(s)	429 person(s)
Elderly persons without guardian	123 person(s)	95 person(s)	84 person(s)
Disabled people able to earn an income	66 person(s)	48 person(s)	48 person(s)
Disabled people unable to earn an income	57 person(s)	73 person(s)	75 person(s)
Disabled people under 18 yrs old	54 person(s)	38 person(s)	30 person(s)
Victims of natural disasters	2,754 families	1,269 families	543 families
Victims of land mines and unexploded weapons	16 person(s)	6 person(s)	2 person(s)

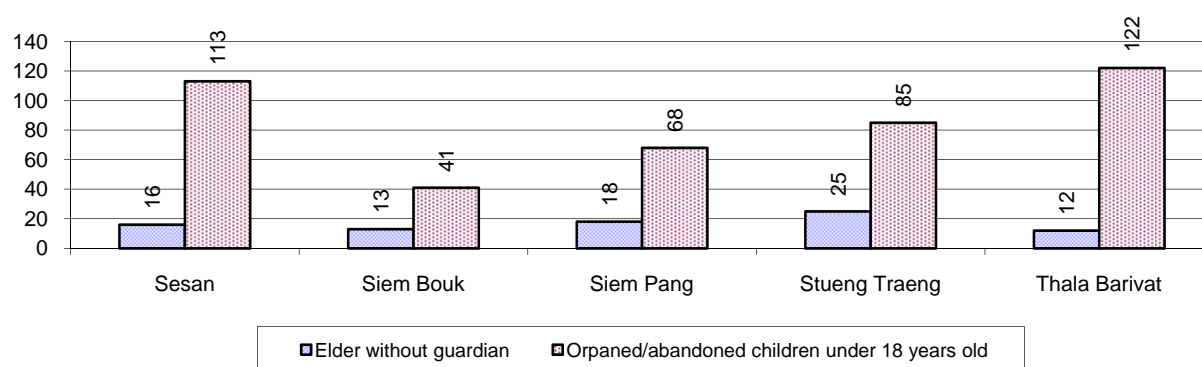
7.4.2 Registered Victims of sexual Abuse or Trafficking, by District, for 2008



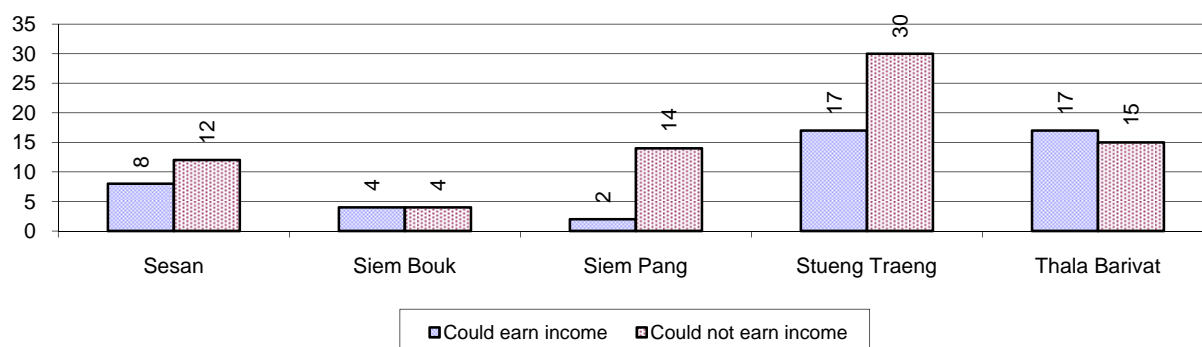
7.4.3 Registered Families with Member(s) using Drugs or living with HIV/AIDS, by District, for 2008



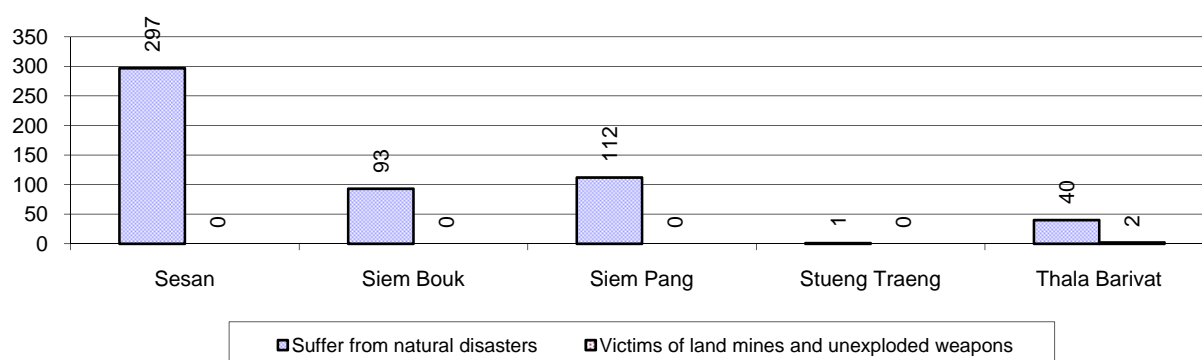
7.4.4 Elderly Persons without a Guardian and orphaned/abandoned Children under 18 years old, by District, for 2008



7.4.5 Number of disabled People who could or could not earn an Income, by District, for 2008



7.4.6 Number of Families who suffered from natural Disasters, and number of Victims of Land Mines and unexploded Weapons, by District, in 2008



7.5 Migration

7.5.1 Migration, 2006-2008

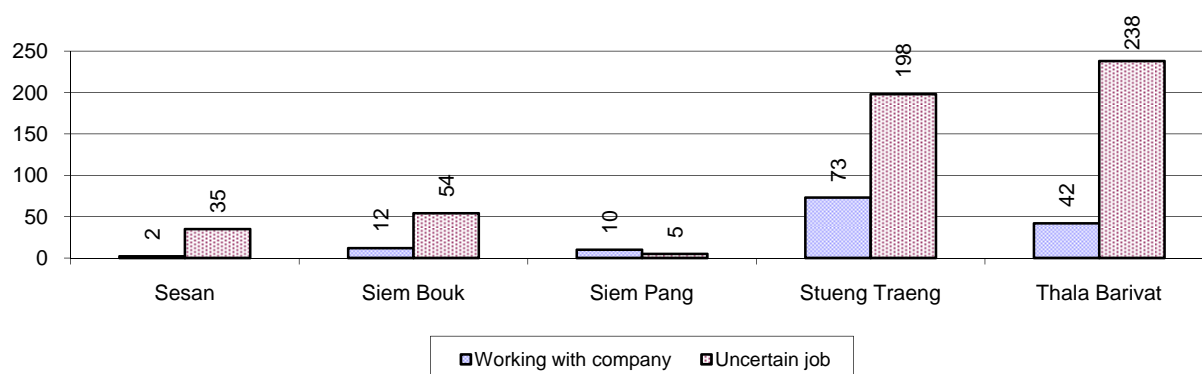
Description	2006	2007	2008
Number of families permanently in-migrated	341 families	205 families	198 families
Total number of people	1,404 person(s)	888 person(s)	882 person(s)
Total number of female	785 person(s)	480 person(s)	447 person(s)
Number of families permanently out-migrated	127 families	125 families	137 families
Total number of people	557 person(s)	496 person(s)	511 person(s)
Total number of female	297 person(s)	260 person(s)	258 person(s)
Number of families staying temporarily	73 families	102 families	182 families
Total number of people	309 person(s)	360 person(s)	707 person(s)
Total number of female	153 person(s)	195 person(s)	372 person(s)

7.5.2 Job Migration

Description	2006	2007	2008
Number of people migrated to work with company/factory	0%	0%	0% 139 persons
Number of people migrated to work, but have uncertain jobs	1%	1%	1% 530 persons

Note: Calculated as a percentage of the total population of 18-60 year olds

7.5.3 Number of People working outside their home Villages in a Company/Factory or with an uncertain Job in 2008

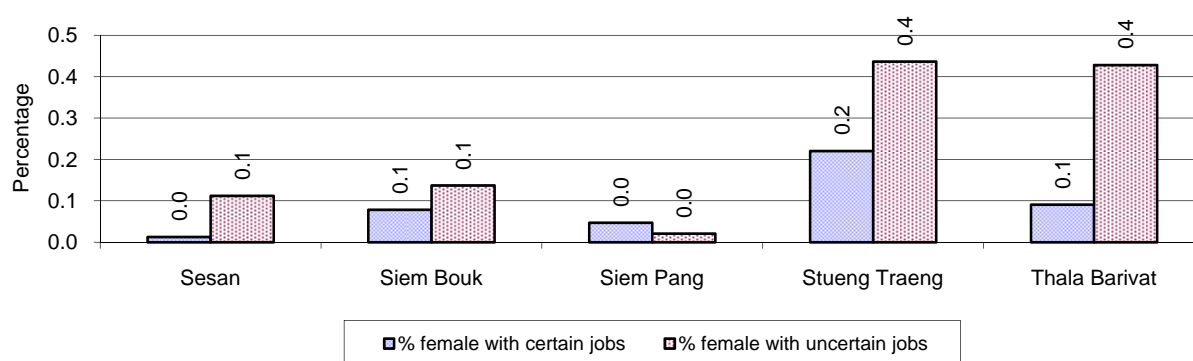


7.5.4 Female migration, 2006-2008

Description	2006 %	2007 %	2008	
			%	Number
Total number of migrants	0.4%	0.7%	0.6%	669 person(s)
Number of female migrants	0.2%	0.4%	0.4%	390 person(s)
Total number of migrants, who go to work with company/factory (with certain jobs)	0.1%	0.1%	0.1%	139 person(s)
Number of female migrants with certain jobs	0.1%	0.1%	0.1%	106 person(s)
Total number of migrants with uncertain jobs	0.3%	0.6%	0.5%	530 person(s)
Number of female migrants with uncertain jobs	0.2%	0.3%	0.3%	284 person(s)

Note: Calculated as a percentage of the total population

7.5.5 Percentage female Migrants with certain and uncertain Jobs, by District, in 2008



Note: Calculated as a percentage of the total population of the district

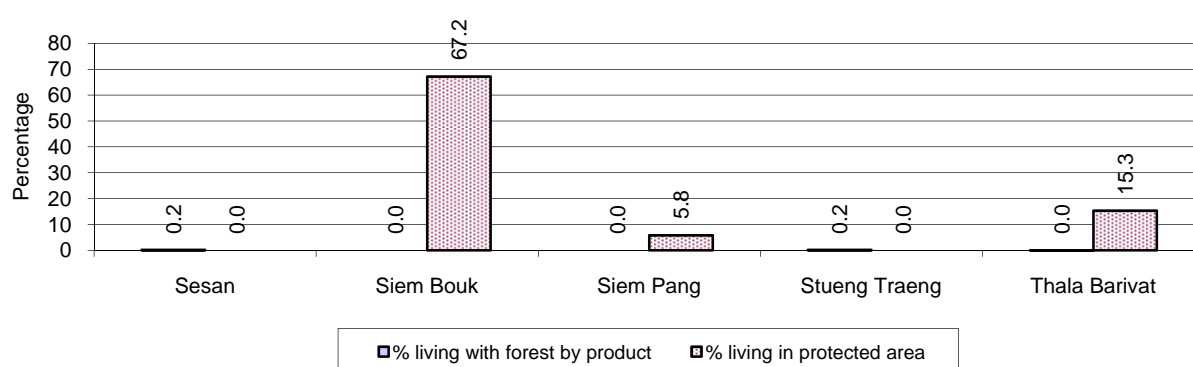
8 Natural Resources and Environment (NRE)

8.1 Families involved with NRE issues, 2006-2008

Description	2006 %	2007 %	2008	
			%	Number
Families living with forest by products	0 %	0 %	0 %	16 families
Families living in a protected area	10 %	12 %	16 %	3,344 families
Houses with access to garbage collection service	0 %	1 %	1 %	165 families
Families affected by environmental pollution	0 %	0 %	0 %	0 families
Families using chemical fertilizer	3 %	3 %	2 %	357 families
Families using chemical pesticide	2 %	1 %	1 %	215 families

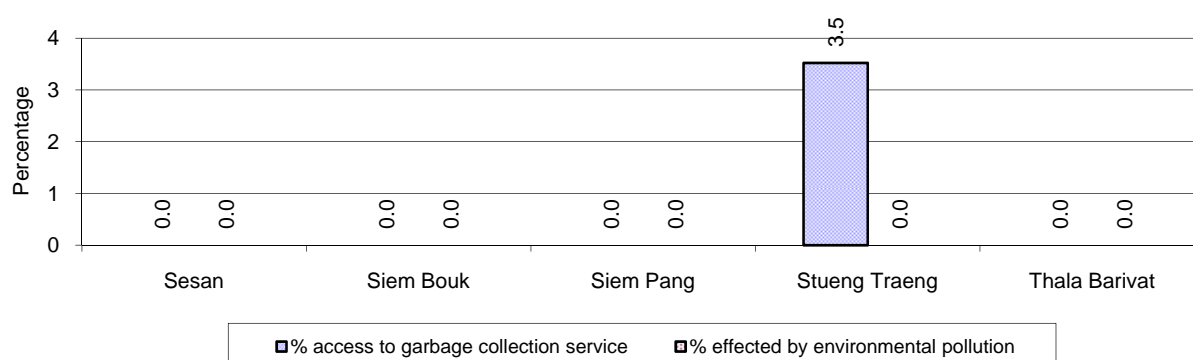
Note: Calculated as a percentage of the total number of families

8.2 Percentage of Families involved with Natural Resource issues, by District, for 2008



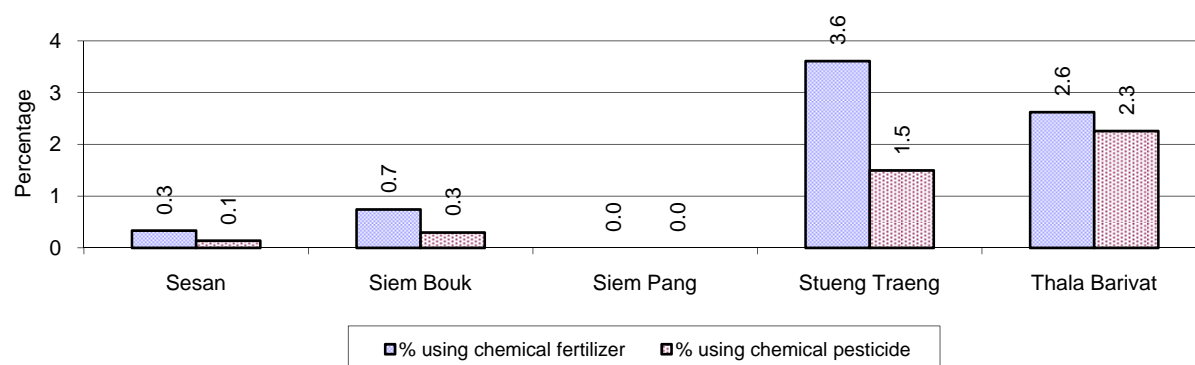
Note: Calculated as a percentage of the number of families in each district

8.3 Percentage Houses with access to Garbage collection and Families affected by environmental Pollution, by District, for 2008



Note: Garbage collection is calculated as a percentage of the total number of houses in each district and families affected by environmental pollution is calculated as a percentage of the total number of families in each district.

8.4 Percentage Families using chemical Fertilizer and chemical Pesticides, by District, for 2008



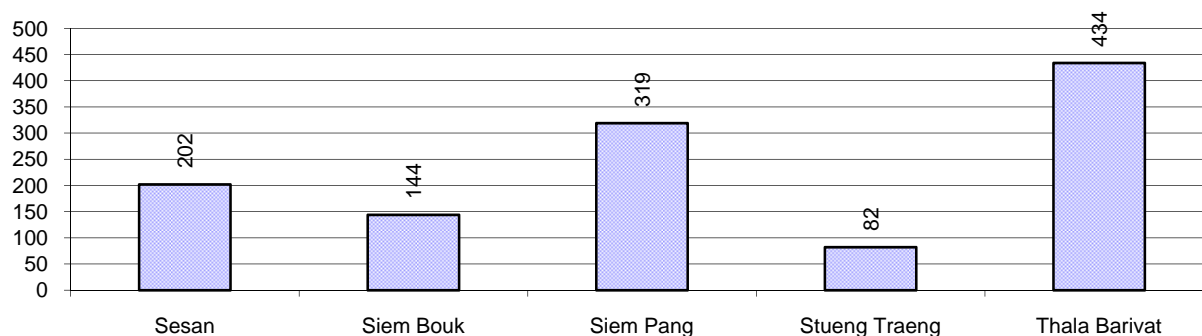
Note: Calculated as a percentage of the total number of families in each district

9 Administration and Security

9.1 Birth Registration, 2006-2009

Description	2006	2007	2008
Number of infants to be registered	1,724 person(s)	1,833 person(s)	2,020 person(s)
Number of unregistered infants the year	589 person(s)	1,082 person(s)	1,181 person(s)
Percentage of infants unregistered	34 %	59 %	58 %

9.2 Number of unregistered Infants born in 2008, by District

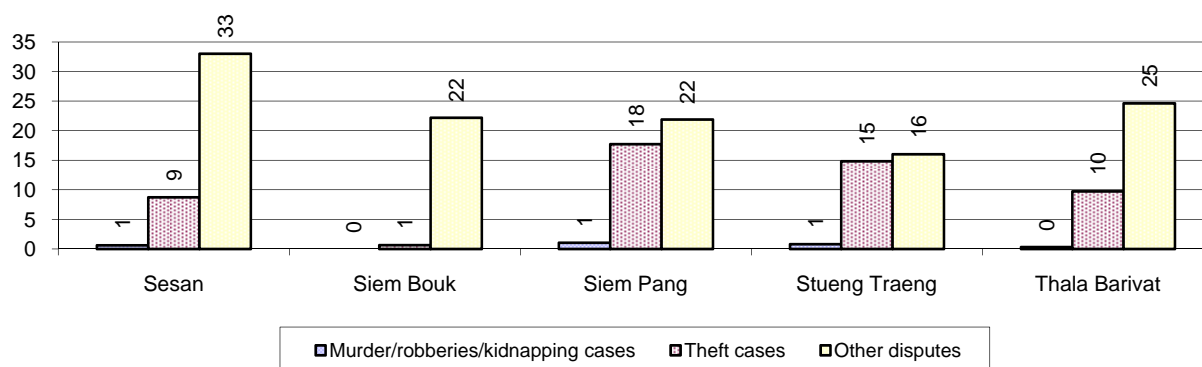


9.3 Registered criminal Cases, 2006-2008

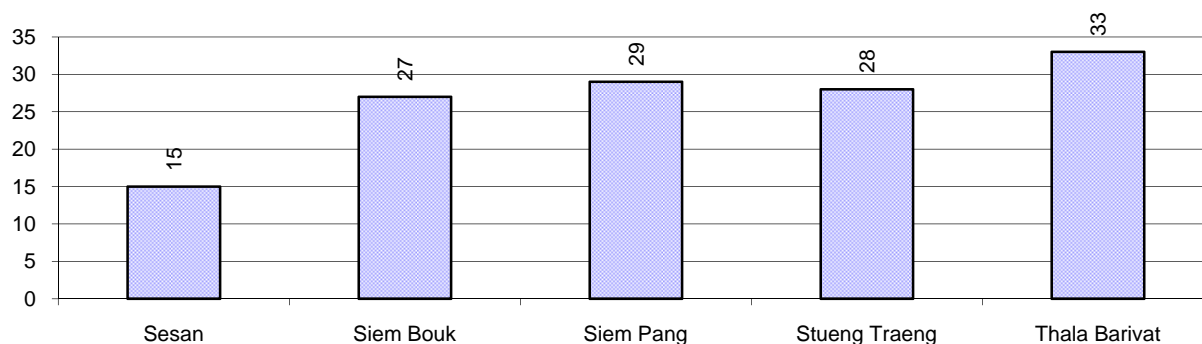
Description	2006	2007	2008
Murders, robberies and kidnapping cases	3 case(s)	3 case(s)	6 case(s)
Theft cases	151 case(s)	113 case(s)	116 case(s)
land dispute cases	116 case(s)	101 case(s)	132 case(s)
Other disputes cases	222 case(s)	200 case(s)	245 case(s)

Note: this reflects only registered criminal cases

9.4 Registered criminal Cases per 10,000 people, by District, for 2008



9.5 Number of registered Land Disputes, by District, in 2008

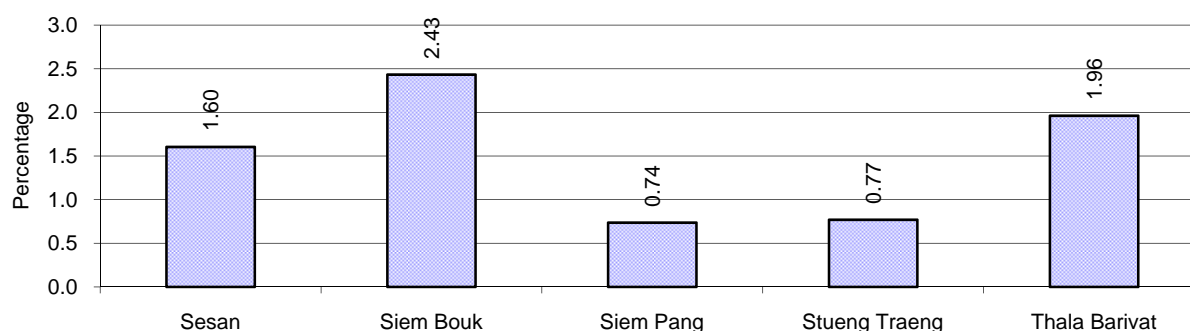


10 Gender

10.1 Reported Domestic Violence, 2006-2008

Description		2006	2007	2008
Families experiencing domestic violence		354 families	361 families	314 families(s)
% families experiencing domestic violence		2 %	2 %	2 %
Domestic violence cases reported by village chiefs		215 case(s)	255 case(s)	261 case(s)
Type	Physical violence	77 case(s)	139 case(s)	127 case(s)
	Sexual violence	2 case(s)	7 case(s)	5 case(s)
	Mental violence	99 case(s)	85 case(s)	100 case(s)
	Household economic violence	37 case(s)	24 case(s)	29 case(s)
Number of administrative decisions on domestic violence		127 case(s)	94 case(s)	161 case(s)
% of administrative decisions on domestic violence		59 %	37 %	62 %

10.2 Percentage of reported cases of Families experiencing domestic Violence, by District, in 2008



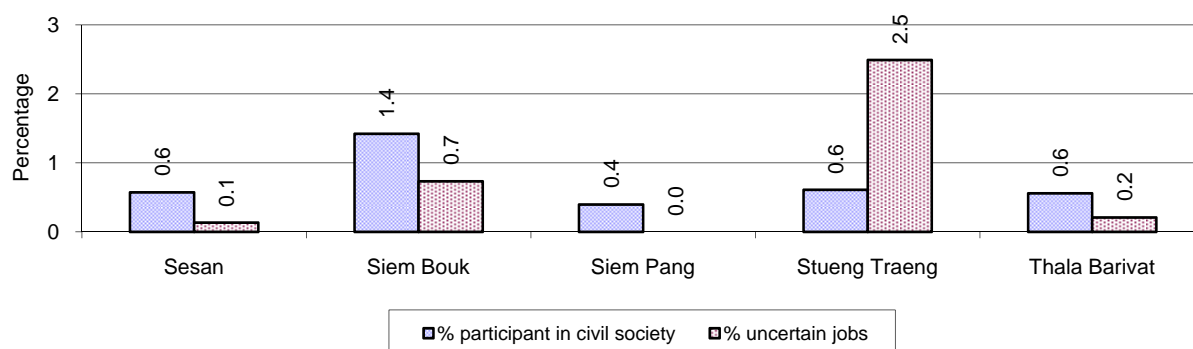
Note: Calculated as a percentage of the total number of families in each district

10.3 Women's involvement, 2006-2008

Description	2006 %	2007 %	2008	
			%	Number
People participating in civil society	2%	2%	2%	1,753 person(s)
Women participating in civil society	1%	1%	1%	710 person(s)
People, 18-60 yrs, with uncertain/irregular jobs	5%	2%	2%	847 person(s)
Women, 18-60 yrs, with uncertain/irregular jobs	3%	1%	1%	441 person(s)

Note: Participation can be in NGOs, CBOs, credit groups, women's unions, parties and other civil society organizations. The first section is calculated as a percentage of the total population. The second section is calculated as a percentage of the total 18-60 year old population.

10.4 Percentage of Female Participants in Civil Society and of 18-60 year women with uncertain Jobs, by District, in 2008



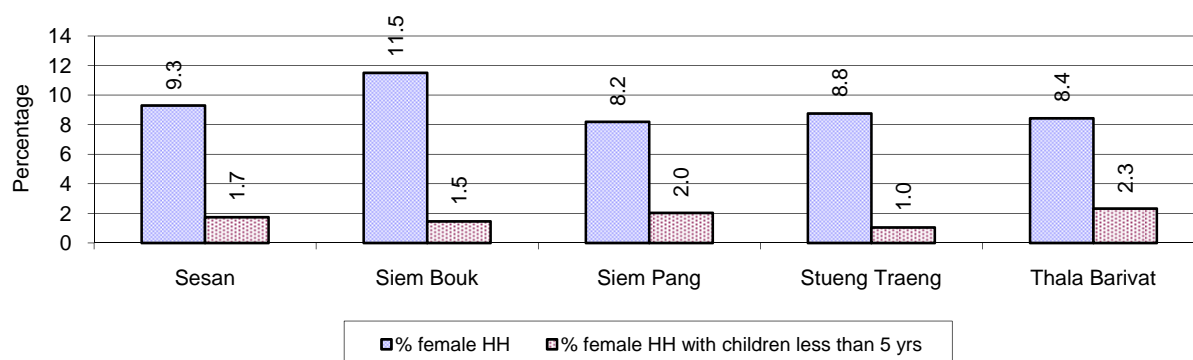
Note: Percentage of female participants in civil society is calculated as a percentage of the total population per district. The percentage of 18-60 years old women with uncertain jobs is calculated as a percentage of the total 18-60 year old population per district.

10.5 Female-headed Households, 2006-2008

Families with:	2006	2007	2008	
	%	%	%	Number
Households in which a woman is the family head	12%	9%	9%	1,898 families
Households in which a woman is the family head with children of less than 5 yrs	4%	2%	2%	364 families

Note: Calculated as a percentage of the total number of families

10.6 Percentage female-headed Households and with Children of less than 5 years old, by District in 2008



Note: Calculated as a percentage of the total number of families in each district
HH: Headed Household

11 Indigenous People in the District

11.1 Ethnic Minorities in the District, 2006-2008

Race of indigenous	2006		2007		2008	
	# families	# population	# families	# population	# families	# population
Phnong	151 families	778 person(s)	132 families	649 person(s)	117 families	591 person(s)
Kouy	614 families	3,148 person(s)	539 families	2,565 person(s)	730 families	3,679 person(s)
Stieng	0 families	0 person(s)	0 families	0 person(s)	2 families	14 person(s)
Mil	0 families	0 person(s)	0 families	0 person(s)	0 families	0 person(s)
Kroal	0 families	0 person(s)	0 families	0 person(s)	0 families	0 person(s)
Thmorn	0 families	0 person(s)	0 families	0 person(s)	0 families	0 person(s)
Khaonh	0 families	0 person(s)	0 families	0 person(s)	0 families	0 person(s)
Tompouonn	0 families	0 person(s)	7 families	38 person(s)	3 families	9 person(s)
Charay	81 families	369 person(s)	3 families	26 person(s)	3 families	16 person(s)
Kroeung	69 families	394 person(s)	81 families	398 person(s)	80 families	322 person(s)
Kavet	606 families	3,374 person(s)	712 families	3,041 person(s)	710 families	3,420 person(s)
Saouch	0 families	0 person(s)	0 families	0 person(s)	0 families	0 person(s)
Lun	78 families	432 person(s)	90 families	428 person(s)	104 families	541 person(s)
Kachak	1 families	1 person(s)	2 families	9 person(s)	1 families	3 person(s)
Praov	116 families	633 person(s)	141 families	792 person(s)	146 families	571 person(s)
Others	32 families	323 person(s)	16 families	48 person(s)	0 families	0 person(s)
Total	1,748 families	8,674 person(s)	1,723 families	7,345 person(s)	1,896 families	8,575 person(s)

Note: "Others" refer to other ethnic groups which are not listed.

11.2 Other Minorities in the District, 2006-2008

Minority	2006		2007		2008	
	# families	# population	# families	# population	# families	# population
Khmer Islamic	141 families	603 person(s)	277 families	859 person(s)	554 families	2,785 person(s)
Vietnamese	81 families	400 person(s)	119 families	579 person(s)	106 families	528 person(s)
Laos	166 families	880 person(s)	8 families	22 person(s)	8 families	40 person(s)

Note: Number of indigenous and minority population are additional data, so some village may not recorded.

SECTION C: PLANS AND PROJECTS

12 Priorities and Plans

12.1 Priorities of the Districts in the Province for 2009 by Sector

Below data summarized by sub-sector from the District Priority Activity Matrix (DPAM) taken from the CDPD. The DPAM is used for the District Integration Workshop (DIW), to show what kind of projects the Communes have proposed in their Commune Investment Plan (CIP) for 2009. Donors, departments and other agencies then considers which projects they want to support and which projects they are not interested in. This results in Temporary Agreements between the Commune Council and the Supporter (NGO, Department, private donor, etc).

Sub Sector	Type of Activities	District										Total	
		Sesan		Siem Bouk		Siem Pang		Stueng Traeng		Thala Barivat			
		Act	Com	Act	Com	Act	Com	Act	Com	Act	Com	Act	Com
Economic													
Agriculture	Crop cultivation training	2	2	13	7	5	4	6	4	11	7	37	24
	Livestock health	10	6	7	5	3	3	4	3	12	9	36	26
	Livestock training	2	2	5	5	2	2	1	1	8	5	18	15
	Farmer community support	0	0	4	2	0	0	0	0	0	0	4	2
	Agriculture inputs	7	7	13	5	7	5	3	1	11	7	41	25
	Fisheries	0	0	15	6	6	3	5	3	0	0	26	12
	Roads	Road infrastructure	1	1	0	0	0	0	2	2	2	1	5
Roads	Road infrastructure construction	16	6	17	7	15	5	7	4	23	11	78	33
	Road infrastructure rehabilitation	2	1	0	0	3	3	0	0	1	1	6	5
	Irrigations	Irrigation infrastructure	0	0	0	0	0	0	0	0	1	1	1
Irrigations	Irrigation infrastructure construction	1	1	1	1	0	0	0	0	0	0	2	2
	Irrigation infrastructure rehabilitation	1	1	0	0	1	1	1	1	0	0	3	3
	Credit	Cash credit	1	1	2	2	0	0	3	3	1	1	7
Agriculture inputs credit		5	5	2	2	1	1	3	3	1	1	12	12
Animal bank		4	3	5	4	1	1	2	2	0	0	12	10
Credit management		1	1	1	1	0	0	0	0	0	0	2	2
Rural economy	Tourist side	1	1	1	1	0	0	0	0	0	0	2	2
	Others	0	0	1	1	0	0	2	2	0	0	3	3
Social													
Health	Reproductive health	5	3	8	5	4	4	3	2	12	9	32	23
	HIV/AIDS	1	1	3	3	1	1	3	3	0	0	8	8
	Health campaign	6	5	6	5	6	4	4	3	5	4	27	21
	Immunization	6	6	5	4	5	4	4	4	9	8	29	26
	Health service delivery	0	0	2	2	0	0	0	0	2	2	4	4
	Health capacity building	0	0	3	3	0	0	0	0	2	2	5	5

Sub Sector	Type of Activities	District										Total	
		Sesan		Siem Bouk		Siem Pang		Stueng Traeng		Thala Barivat			
		Act	Com	Act	Com	Act	Com	Act	Com	Act	Com	Act	Com
	TBA support/training	3	3	6	4	0	0	3	3	4	3	16	13
	Tuberculosis control	1	1	0	0	0	0	0	0	0	0	1	1
	Malaria control	4	2	8	4	5	5	4	3	15	10	36	24
	Dengue fever control	3	3	1	1	0	0	5	3	3	2	12	9
	Health center operation	0	0	0	0	0	0	0	0	2	2	2	2
	Early child care	1	1	3	3	0	0	3	3	9	7	16	14
	Child health care	1	1	1	1	1	1	0	0	2	2	5	5
	Deworming	3	3	2	2	0	0	3	3	3	2	11	10
	Domestic water supply	0	0	0	0	0	0	0	0	2	2	2	2
	Domestic sanitation	10	7	9	6	4	3	7	3	6	4	36	23
	Health infrastructure construction	2	2	4	2	2	2	1	1	1	1	10	8
	Water supply	3	3	5	4	0	0	0	0	3	3	11	10
	Drinking wells/pond construction	3	3	7	5	5	5	5	4	5	4	25	21
	Drinking wells/pond rehabilitation	2	2	1	1	3	3	0	0	4	4	10	10
Education	Literacy	0	0	2	2	0	0	0	0	8	4	10	6
	School building	3	3	7	6	2	2	0	0	10	6	22	17
	Kindergarten and child care	7	6	14	6	6	4	5	3	17	9	49	28
	School enrollment	4	3	8	6	11	5	3	2	13	7	39	23
	School dropout reduction	6	4	2	2	4	3	2	1	10	8	24	18
	Vocational training	0	0	1	1	0	0	0	0	1	1	2	2
	School capacity building	1	1	0	0	2	2	0	0	4	3	7	6
	School materials	0	0	1	1	0	0	0	0	0	0	1	1
Social other	Disabled people	1	1	4	2	0	0	0	0	0	0	5	3
	Relief	0	0	2	2	0	0	0	0	0	0	2	2
	Culture	1	1	0	0	0	0	0	0	0	0	1	1
	Orphan children	0	0	1	1	0	0	2	2	0	0	3	3
	Vulnerable people	1	1	3	1	0	0	0	0	0	0	4	2
NREM													
NREM education	NREM training	13	4	14	6	9	4	6	4	21	11	63	29
	NREM campaign	2	2	0	0	1	1	0	0	3	2	6	5
Natural resource protection	Tree planting	0	0	1	1	3	3	1	1	0	0	5	5
	Fisheries protection	7	4	9	7	6	4	5	3	10	6	37	24
	Forestry protection	5	4	4	4	3	3	0	0	11	9	23	20

Sub Sector	Type of Activities	District										Total	
		Sesan		Siem Bouk		Siem Pang		Stueng Traeng		Thala Barivat			
		Act	Com	Act	Com	Act	Com	Act	Com	Act	Com	Act	Com
	Wildlife/temple protection	0	0	3	3	0	0	0	0	1	1	4	4
Environmental management	Waste/polustion control	0	0	1	1	0	0	8	3	0	0	9	4
Administration and Security													
CS Administration	CS capacity building	6	5	13	6	4	4	4	4	20	11	47	30
	CS planning formulation	1	1	2	2	1	1	0	0	0	0	4	4
	CS furniture/supplies	4	2	5	4	2	2	0	0	3	3	14	11
	Land used planning	8	4	7	4	6	4	9	4	10	6	40	22
Local Security	Local security	4	3	6	4	4	2	5	3	15	8	34	20
Local Society	Information dissemination	1	1	7	4	9	5	1	1	5	5	23	16
	Community organization	0	0	4	2	0	0	0	0	0	0	4	2
Gender													
Gender policy support	Gender mainstreaming	8	7	11	5	0	0	2	1	12	11	33	24
	Gender capacity building	2	2	1	1	1	1	0	0	10	8	14	12
	Women and children rights	6	2	8	5	1	1	3	2	29	11	47	21
	Skill training for women	3	3	7	4	6	5	4	4	2	2	22	18
Gender legal protection	Domestic violence prevention	9	7	8	7	6	5	6	4	12	10	41	33
	Anti-trafficking	2	2	4	4	1	1	0	0	7	6	14	13
	Child protection	5	3	2	2	0	0	0	0	0	0	7	5

Act.: number of activities proposed relating to a sub-sector. **Com.:** number of communes that proposed activities relating to a sub-sector.

12.2 Total Expenditure on C/S Fund Projects by sector and district between 2005 and 2008

Sector	Total Cost in Million Riels				
	Sesan	Siem Bouk	Siem Pang	Stueng Traeng	Thala Barivat
Domestic Sanitation		7.85			
Education		23.70			24.54
Rural Domestic Water Supplies				18.39	54.75
Rural Transport	594.82	600.08	432.91	491.91	740.86

Source: PID

13 District level Projects from 2006 to 2009

District Initiative Projects are funded by Danida and DFID through the PSDD (UNDP, DFID and SIDA).

Funding for 2006-2008

Between 2006 and 2008 there were 14 provinces funded by PSDD and 10 by Danida and DFID. The list of provinces and who funded them is below

Danida and DFID funded DIPs:

Kampong Cham	Kampong Speu	Koh Kong	Kratie	Monduliri
Pursat	Ratanakiri	Siem Reap	Sihanoukville	Kep

PSDD funded DIPs:

Banteay Meanchey	Battambang	Kampong Chhnang	Kandal	Phnom Penh
Prey Veng	Svay Rieng	Takeo	Kampong Thom	Preah Vihear
Stung Treng	Kampot	Oddar Meanchey	Pailin	

Funding for 2009

In 2009 there was a change to the number of provinces funded by the two streams. Danida and DFID were still funding the same 10 provinces they had been funding the three years previous, but two more provinces were added *Kampong Thom and Kampot*. Now PSDD funded 12 provinces and Danida and DFID funded 12.

13.1 District Initiative Infrastructure Projects from 2006 to 2009

13.1.1 District Initiative Infrastructure Projects for 2006 to 2008

District	Date	Project Name	Implementing Agencies	Budget (US\$)	Project Output & Capacity	Number of Beneficiaries
Seam Pang	2006	Wooden bridge repair	Inter-commune	12,000.00		
Siem Pang	2007	Build wooden bridge	Inter-commune	8,240.00		
Siem Pang	2008	Wooden bridge rehabilitation	Inter-commune	8,382.00	25m long and 3.5 m width	8056 persons in 2 communes
Thalabavivath	2007	Construct laterite road with culverts	Inter-commune	7,850.00		
Thalabavivath	2008	Laterite road rehabiulitation	Inter-commune	8,407.00	900 m	6073 person in 2 communes

13.1.2 District Initiative Infrastructure Projects in 2009

Municipality/ District/Khan	Project Name	Sector	Implementing Agency	Budget	Project outputs/ capacities	No. of Beneficiaries		Progress	Remarks on Issues of Progress
						Total	Female		
Siem Pang	Timber bridge	RRD	PMC	\$20,270.00	36m x 3.5m	5,101	2,565	0%	Fail in 1st Bidding
Thala Borivat	Laterite road	RRD	PMC	\$20,250.00	2000m x 5m	9,559	4,634	0%	Fail in 1st Bidding

13.2 District Initiative Service Projects from 2006 to 2009

13.2.1 District Initiative Service Projects for 2006 to 2008

District	Date	Project Names	Implementing agencies	Budget (US\$)	Project Output & Capacity	Number of Beneficiaries
Seam Pang	2006	Animal vaccination	Agriculture department	1,639.00		
Seam Pang	2006	Animal disease monitoring	Agriculture department	207.50		
Seam Pang	2006	cattle raising extension	Agriculture department	353.50		
Seam Pang	2006	Education on law controlling forest clearing	Agriculture department	1,750.00		
Seam Pang	2006	Parenting education	Women Affairs department	376.00		
Seam Pang	2006	School admission campaigns	Women Affairs department	1,361.00		
Seam Pang	2006	Consolidating school admission campaigns	Women Affairs department	302.00		
Siem Pang	2007	Purchase traditional musical instruments (Mohori)	DCULT	588.00		
Siem Pang	2007	Conduct school registration campaign	DWA	1,313.00		
Siem Pang	2007	Conflict resolution outside court system	Human Rights Org	503.00		
Siem Pang	2008	Animal Vaccination	Agri distr office	415.00	3 communes	342 families
Siem Pang	2008	Illegal Fishery Prevention	Agri distr office	1,280.00	Dessimation in whole 5 districts and installd 3 billboards	251 families
Siem Pang	2008	Rice Field Demo	Agri distr office	600.00	28 villages in 5 districts	410 families
Siem Pang	2008	Training on Civil Registration	DDC	517.50	25 members of CC and 5 Clerks	25 members of CC and 5 Clerks
Thalabarivath	2007	Training on castor planting technique	DAFF	371.00		

District	Date	Project Names	Implementing agencies	Budget (US\$)	Project Output & Capacity	Number of Beneficiaries
Thalabarivath	2007	Conduct school registration campaign	DWA	1,283.00		
Thalabarivath	2007	Training on prevention from domestic violence	DWA	2,188.00		
Thalabarivath	2008	Land Law Dessimation	Land office	759.00	11 communes	500 persons
Thalabarivath	2008	Forestry Law Dessimation	Forestry Adm office	853.50	5 communes	32 persons
Thalabarivath	2008	Training on Woman and Children Rights in commune level	WA distr office	493.00	11 communes	148 persons
Thalabarivath	2008	Women and Children Rights dessimation in village level	WA distr office	708.00	44 villages	1276 persons

13.2.2 District Initiative Service Projects in 2009

District	Project Name	Sector	Implementing Agency	Budget	Project outputs/ capacities	No. of Beneficiaries		Progress	Remarks on Issues of Progress
						Total	Female		
Siem Pang	Training on sewing for women	GEN	WA Office	\$2,280.00	1 course (19 Sewing Machines)	14	14	50%	
Siem Pang	Training on cadastral law	LUM	LMUCC Office	\$1,141.00	5 courses	100	45	0%	
Siem Pang	Dissemination on forestry law and Establish Community forestry	NRM	CEPA	\$2,157.00	5 courses	100	25	0%	
Siem Pang	Dissemination on drugs use protection	SOC	Police Inspection	\$684.00	5 courses	100	45	100%	
Thalaborivat	Dissemination on poultry raising	AGR	Agriculture Office	\$1,384.00	3 courses	100		50%	
Thalaborivat	Provide transportation for poorest students	EDU	Education Office	\$2,337.00	50 bicycles for poor school children	50	25	50%	
Thalaborivat	Training on sewing for women	GEN	WA Office	\$2,720.00	1 course (24 Sewing Machines)	12	12	50%	

13.3 Inter Commune Council Projects in 2008 and 2009

13.3.1 ICC Projects in 2008

There are no ICC projects in this Province at this time

13.3.2 ICC Projects in 2009

There are no ICC projects in this Province at this time

Source: ICC project, Ministry of Interior (DoLA), -UNDP project for Local Governance – DDLG

13.4 Provincial Investment Fund (PIF) and District Investment Fund (DIF)

The PIF and DIF receive funding from a range of donors – PSDD, DANIDA, UNICEF, IFAD and CANADA. However in this section we only include the PIF and DIF projects funded by PSDD and DANIDA through NRML.

13.4.1 PIF and DIF 2008

NCDD Standard Outputs			Budget
Output Description	Unit	Quantity	
Unit Title: Support to Contract Admin Unit		Unit Number: 19/CAU/08-01	
CAU staff support costs	Month	12	\$ 16,132.28
Program administrative support	Month	12	\$ 16,024.72
Publicity	Month	12	\$ 2,812.00
Program support staff	Month	12	\$ 2,700.00
Program meetings and workshops	Month	12	\$ 200.00
Training and capacity building by/for CAU	Person-Day	(20F+50M) X 5D	\$ 2,505.50
Contingencies			\$ 1,197.00
Sub-total of unit			\$ 41,571.50
Unit Title: Support to Finance Unit		Unit Number: 19/FIN/08-01	
Support to ExCom Finance staff	Month	12	\$ 6,086.74
Support to Provincial Treasury staff	Month	12	\$ 7,286.26
Training and capacity building by/for Finance staff	Person-Day	(10F+44M) X 4D	\$ 1,962.00
Contingencies			\$ 0.00
Sub-total of unit			\$ 15,335.00
Unit Title: Support to Technical Support Unit		Unit Number: 19/TSU/08-01	
Support to ExCom TSU	Month	12	\$ 11,627.00
Training and Capacity Building for ExCom TSU	Person-Day	(0F+8M) X 40D	\$ 3,005.00
Training and Capacity Building by ExCom TSU	Person-Day	(3F+68M) X 30D	\$ 688.00
Contingencies			\$ 0.00
Sub-total of unit			\$ 15,320.00
Unit Title: Support to Project to Support Democratic Development through Decentralization and Deconcentration		Unit Number: 19/PSD/08-01	
PSDD staff support costs	Month	12	\$ 17,048.00
PSDD support staff	Month	12	\$ 4,210.00
Contingencies			\$ 0.00
Sub-total of unit			\$ 21,258.00
Unit Title: Support to Local Administration Unit / PoLA		Unit Number: 19/LAU/08-01	
Support to ExCom LAU	Month	12	\$ 23,056.00
Organise C/S Council Congress	Congress	1	\$ 5,911.50
Accountability Working Group	Month	12	\$ 100.00
Other LAU costs	Month	12	\$ 165.00
Training and Capacity Building for ExCom LAU	Person-Day	(3F+30M) X 16D	\$ 4,270.00
Training and Capacity Building by ExCom LAU	Day	(50F+200M) X 12D	\$ 5,317.50
Contingencies			\$ 0.00
Sub-total of unit			\$ 38,820.00
Contract Title: Support for department of agriculture to conduct activities to reduce poverty		Contract Number: 19/AGR/0801-00	
Operational Support	Month / item	12	\$ 120.00
Monitoring	Person-Day	12	\$ 114.00
Evaluation	Report	1	\$ 120.00
Soil improvement program	hectare or Site	6	\$ 972.00
Agronomy demonstration (fruit tree, rice, vege, crop)	Demo or Site	8	\$ 2,430.00
Farmers trained on related integrated farming systems	Person-Day	(63F+27M) X 6D	\$ 306.00
Farmers trained on related agronomy extension techniques and demonstration.	Person-Day	(519F+233M) X 12D	\$ 2,014.00
Farmers trained on related AH and P extension techniques and demonstration.	Person-Day	(189F+81M) X 18D	\$ 918.00
Selected outstanding farmers trained to be VLAs.	Person-Day	(16F+142M) X 20D	\$ 4,469.00
Study tour for government staff	Person-Day	(0F+5M) X 5D	\$ 1,100.00
Contingencies			\$ 201.00
Sub-total of contract			\$ 12,764.00
Contract Title: Support Culture and Fine Art Department on costume and culture khmer rehabilitation.		Contract Number: 19/CUL/0801-00	
Public Address (PA) systems	Item	2	\$ 1,655.00
Operational Support	Month / item	12	\$ 120.00
Monitoring	Person-Day	12	\$ 15.00
Evaluation	Report	3	\$ 30.00

NCDD Standard Outputs			Budget
Output Description	Unit	Quantity	
Culture education and training to general population	Person-Day	(16F+24M) X 1D	\$ 1,400.00
Contingencies			\$ 80.00
Sub-total of contract			\$ 3,300.00
Contract Title: Strengthen roles and responsibilities Pilot District Officers.		Contract Number: 19/D03/0801-01	
Office stationary and supplies	Per-month	12	\$ 497.50
Road construction/rehabilitation	Metre	3000	\$ 10,077.50
Fish production/Conservation	Set	1	\$ 1,278.50
Animals (pig, cow, buffalo, chicken, and duck) vaccination and parasite control program.	Animal	1000	\$ 415.00
Social survey	Survey	1	\$ 429.76
IPM or Farmer Field Schools (vegetable and rice)	Field School	5	\$ 0.00
Vocational training	Person-Day	(8F+41M) X 30D	\$ 1,195.00
Contingencies			\$ 246.74
Sub-total of contract			\$ 14,140.00
Contract Title: Pilot District		Contract Number: 19/D05/0801-01	
Office stationary and supplies	Per-month	12	\$ 435.00
Road construction/rehabilitation	Metre	3000	\$ 10,005.75
NREM Education campaign	Event	1	\$ 759.00
Curriculum/learning materials	Set	1	\$ 852.50
Vocational training	Person-Day	(0F+27M) X 30D	\$ 711.50
Training on confidences building to women group and NRM committee.	Person-Day	(58F+90M) X 1D	\$ 1,201.00
Contingencies			\$ 103.50
Sub-total of contract			\$ 14,068.25
Contract Title: Support Environment Department on natural resource and environment law education.		Contract Number: 19/NRM/0801-00	
Operational Support	Month / item/person	12	\$ 120.00
Evaluation	Report	1	\$ 15.00
Monitoring	Person-Day	10	\$ 60.00
NREM awareness and education	Person-Day	(50F+100M) X 20D	\$ 2,797.00
Contingencies			\$ 8.00
Sub-total of contract			\$ 3,000.00
Contract Title: Support to provincial department of information		Contract Number: 19/PIN/0801-00	
Video telecasts	Telecast	75	\$ 1,460.00
Communication equipment	Item	10	\$ 1,100.00
Evaluation	Report	1	\$ 20.00
Monitoring	Person-day	48	\$ 360.00
Contingencies			\$ 60.00
Sub-total of contract			\$ 3,000.00
Contract Title: Support Planning Department on Provincial Development Plan		Contract Number: 19/PLA/0801-01	
Provincial Development Investment Plan	PDIP	1	\$ 632.50
Monitoring	Person-Day	1	\$ 0.00
Evaluation	Report	1	\$ 20.00
Provincial Development Plan	PDP	1	\$ 2,424.50
Operational Support	Month / item	12	\$ 300.00
Training on planning	Person-Day	(50F+120M) X 5D	\$ 2,005.00
Training for District Integration	Person-Day	(6F+25M) X 10D	\$ 2,525.50
Contingencies			\$ 156.50
Sub-total of contract			\$ 8,064.00
Contract Title: Support to PDRD for the improvement of rural infrastructure		Contract Number: 19/RRD/0801-00	
Bridges	Bridge	1	\$ 6,460.00
Operational Support	Month / item	12	\$ 120.00
Monitoring	Person-Day	24	\$ 140.00
Evaluation	Report	3	\$ 40.00
Training in road maintenance	Person-Day	(5F+52M) X 1D	\$ 500.00
Contingencies			\$ 82.00
Sub-total of contract			\$ 7,342.00
GRAND TOTAL			\$ 197,982.75

Note: M= Male, F= Female, D=day

13.4.2 PIF and DIF Projects for 2009

NCDD Standard Outputs			Budget
Output Description	Unit	Quantity	
Unit Title: Support to Contract Admin Unit		Unit Number: 19/CAU/09-02	
CAU staff support costs	Month	12	\$ 14,590.00
Program administrative support	Month	12	\$ 17,679.49
Program support staff	Month	12	\$ 3,350.00
Program meetings and workshops	Month	12	\$ 218.71
Publicity	Month	12	\$ 2,880.00
Other program support costs	Month	3	\$ 4,787.80
Training and capacity building by/for CAU	Person-Day	(15F+35M) X 4D	\$ 3,012.00
Contingencies			\$ 1,500.00
Sub-total of unit			\$ 48,018.00
Unit Title: Support to Finance Unit		Unit Number: 19/FIN/09-01	
Support to ExCom Finance staff	Month	12	\$ 6,000.00
Support to Provincial Treasury staff	Month	12	\$ 7,256.00
Training and capacity building by/for Finance staff	Person-Day	(11F+40M) X 4D	\$ 2,079.00
Contingencies			\$ 0.00
Sub-total of unit			\$ 15,335.00
Unit Title: Support to Technical Support Unit		Unit Number: 19/TSU/09-01	
Support to ExCom TSU	Month	12	\$ 12,639.34
Training and Capacity Building by ExCom TSU	Person-Day	(3F+50M) X 15D	\$ 915.34
Training and Capacity Building for ExCom TSU	Person-Day	(0F+8M) X 6D	\$ 1,765.32
Contingencies			\$ 0.00
Sub-total of unit			\$ 15,320.00
Unit Title: Support to Project to Support Democratic Development through Decentralization and Deconcentration		Unit Number: 19/PSD/09-02	
PSDD staff support costs	Month	12	\$ 16,284.00
PSDD support staff	Month	12	\$ 4,200.00
Contingencies			\$ 0.00
Sub-total of unit			\$ 20,484.00
Unit Title: Support to Local Administration Unit / PoLA		Unit Number: 19/LAU/09-02	
Support to ExCom LAU	Month	12	\$ 25,260.00
Accountability Working Group	Month	12	\$ 1,297.00
Other LAU costs	Month	12	\$ 550.00
Training and Capacity Building for ExCom LAU	Person-Day	(3F+30M) X 20D	\$ 2,968.50
Training and Capacity Building by ExCom LAU	Day	(50F+200M) X 2D	\$ 9,304.50
Contingencies			\$ 0.00
Sub-total of unit			\$ 39,380.00
Contract Title: Support for department of agriculture to conduct activities to reduce poverty		Contract Number: 19/AGR/0901-01	
Agronomy demonstration (fruit tree, rice, vege, crop)	Demo or Site	4	\$ 1,890.00
Monitoring	Person-Day	24	\$ 120.00
Agronomy stations and research	Station	5	\$ 8,425.00
Animals (pig, cow, buffalo, chicken, and duck) vaccination and parasite control program.	Animal	1200	\$ 910.00
Evaluation	Report	2	\$ 55.00
Farmer Extension workers	Person	32	\$ 419.00
Farmers trained on related AH and P extension techniques and demonstration.	Person-Day	(336F+150M) X 2D	\$ 2,882.00
Selected outstanding farmers trained to be VLAs.	Person-Day	(1F+133M) X 4D	\$ 4,897.00
Selected outstanding farmers trained to be FEWs, VAVs, VVs, CAFPs.	Person-Day	(15F+15M) X 6D	\$ 596.00
Farmers trained on related agronomy extension techniques and demonstration.	Person-Day	(290F+132M) X 2D	\$ 2,224.00
Contingencies			\$ 582.00
Sub-total of contract			\$ 23,000.00
Contract Title: Strengthen roles and responsibilities Pilot District Officers.		Contract Number: 19/D03/0901-01	
Office stationary and supplies	Per-month	12	\$ 1,435.00
Bridges	Bridge	1	\$ 20,270.00
Equipment & materials for support to DIP program	Equipment	1	\$ 5,023.16
Curriculum/learning materials	Set	50	\$ 2,157.00
Vocational training	Person-Day	(20F+0M) X 120D	\$ 2,280.00
Land conflict resolution/awareness training	Person-Day	(7F+28M) X 2D	\$ 1,141.00
Capacity building training for district officials	Peron-day	(15F+25M) X 5D	\$ 1,570.00
Community forestry training	Person-Day	(15F+30M) X 2D	\$ 0.00
Education and dissemination of drug addict	Peron-day	(15F+30M) X 1D	\$ 684.00
Contingencies			\$ 463.00
Sub-total of contract			\$ 35,023.16
Contract Title: Pilot District		Contract Number: 19/D05/0901-00	
Office stationary and supplies	Per-month	12	\$ 1,307.50

NCDD Standard Outputs			Budget
Output Description	Unit	Quantity	
Road construction/rehabilitation	Metre	1	\$ 20,250.00
Livestock improvement demonstration (pig, chicken, and forage)	Demo or Site	10	\$ 1,384.00
Curriculum/learning materials	Set	1	\$ 2,337.00
Equipment & materials for support to DIP program	Equipment	1	\$ 8,400.00
Vocational training	Person-Day	(15F+0M) X 120D	\$ 2,720.00
Capacity building training for district officials	Peron-day	(14F+51M) X 1D	\$ 1,770.00
Contingencies			\$ 231.50
Sub-total of contract			\$ 38,400.00
Contract Title: Support Environment Department on natural resource and environment law education.		Contract Number: 19/NRM/0901-00	
Residue management	Community/Place/Garbage	12	\$ 6,080.00
Monitoring	Person-Day	4	\$ 60.00
Evaluation	Report	1	\$ 15.00
Contingencies			\$ 145.00
Sub-total of contract			\$ 6,300.00
Contract Title: Support to provincial department of information		Contract Number: 19/PIN/0901-00	
Video telecasts	Telecast	91	\$ 2,120.00
Evaluation	Report	1	\$ 25.00
Contingencies			\$ 55.00
Sub-total of contract			\$ 2,200.00
Contract Title: Support Planning Department on Provincial Development Plan		Contract Number: 19/PLA/0901-00	
Provincial Development Plan	PDP	1	\$ 2,488.00
Provincial Development Investment Plan	PDIP	1	\$ 485.00
Training on planning	Person-Day	(15F+161M) X 1D	\$ 2,000.00
Training for District Integration	Person-Day	(15F+30M) X 5D	\$ 2,404.00
Contingencies			\$ 223.00
Sub-total of contract			\$ 7,600.00
Contract Title: Support to PDRD for the improvement of rural infrastructure		Contract Number: 19/RRD/0901-00	
Culverts	Culvert	2	\$ 5,600.00
Monitoring	Person-Day	2	\$ 100.00
Evaluation	Report	1	\$ 40.00
Training in road maintenance	Person-Day	(17F+55M) X 1D	\$ 450.00
Contingencies			\$ 110.00
Sub-total of contract			\$ 6,300.00
GRAND TOTAL			\$ 257,360.16

Note: M= Male, F= Female, D=day

13.5 Other projects in the Province

13.5.1 Rural Poverty Reduction Program (RPRP)

There are no RPRP projects being implemented in this district or province at this time. The RPRP is only being implemented in Svay Rieng and Prey Veng

13.5.1.1 RPRP Projects from 2006 to 2008

No RPRP projects in this province at this time

13.5.1.2 RPRP Projects in 2009

No RPRP projects in this province at this time

13.5.2 Seth Korma 2007 to 2009

13.5.2.1 Seth Korma 2007 Estimated Expenditure and Outputs in 2007

Description of Outputs/Activities	Budget (1 US\$ = 4000 Riels)
Operational support for CWCC in 34 Communes	\$4,680.00
Incentive for Community Preschool Teacher in 28 Communes	\$5,602.50
Women and child rights campaign and promotion in 34 Communes	\$2,040.00
Un-earmarked activities for best communes (5 Communes)	\$1,000.00
NFE Classroom/Shelter/Playground construction in 2 Communes	\$5,499.50
TOTAL	\$18,822.00

Source: UNICEF

13.5.2.2 Seth Koma 2008 Estimate Expenditure and Outputs in 2008

District	Commune	# Village	# CPS	# CCWC	Ope. Costs for CCWC	CPS Teacher	Women's Right	Children's Right	Water & CLTS	Best CC	Total
Sesan	Kamphun	4	4	11	\$594	\$270	\$80	\$80	\$100	\$200	\$1,324
	Kbal Romeas	4	2	11	\$594	\$135	\$80	\$80	\$0	\$0	\$889
	Phluk	2	2	9	\$486	\$135	\$50	\$50	\$0	\$0	\$721
	Samkhuoy	4	4	11	\$594	\$270	\$100	\$100	\$100	\$400	\$1,564
	Sdau	2	4	9	\$486	\$270	\$50	\$50	\$0	\$0	\$856
	Srae Kor	2	2	9	\$486	\$135	\$60	\$60	\$0	\$0	\$741
	Ta Lat	4	2	11	\$594	\$135	\$50	\$50	\$0	\$0	\$829
Siem Bouk	Kaoh Preah	1	1	8	\$384	\$68	\$47	\$50	\$0	\$0	\$548
	Kaoh Sampeay	2	2	9	\$486	\$135	\$100	\$100	\$100	\$200	\$1,121
	Kaoh Sralay	4	4	11	\$594	\$270	\$80	\$80	\$0	\$0	\$1,024
	Ou Mreah	4	2	11	\$594	\$135	\$50	\$50	\$0	\$0	\$829
	Ou Ruessei Kandal	1	1	8	\$480	\$68	\$50	\$50	\$0	\$0	\$648
	Siem Bouk	3	1	10	\$600	\$68	\$60	\$60	\$0	\$0	\$788
	Srae Krasang	2	2	9	\$486	\$135	\$100	\$100	\$100	\$400	\$1,321
Siem Pang	Preaek Meas	4	0	11	\$594	\$0	\$60	\$60	\$0	\$0	\$714
	Sekong	8	5	15	\$720	\$338	\$100	\$100	\$100	\$400	\$1,758
	Santepheap	6	0	13	\$702	\$0	\$50	\$50	\$0	\$0	\$802
	Srae Sambour	7	5	14	\$672	\$338	\$70	\$70	\$100	\$200	\$1,450
	Tma Kaev	3	0	10	\$540	\$0	\$50	\$50	\$0	\$0	\$640
Stueng Traeng	Stueng Traeng	5	0	12	\$648	\$0	\$50	\$50	\$0	\$0	\$748
	Srah Ruessei	3	0	10	\$540	\$0	\$60	\$60	\$0	\$0	\$660
	Preah Bat	3	1	10	\$540	\$68	\$70	\$70	\$100	\$100	\$948
	Sameakki	6	0	13	\$702	\$0	\$100	\$100	\$100	\$400	\$1,402
Thala Barivat	Anlong Phe	5	6	12	\$648	\$405	\$60	\$60	\$0	\$0	\$1,173
	Chamkar Leu	3	3	10	\$540	\$203	\$50	\$50	\$100	\$0	\$943
	Kang Cham	5	5	12	\$648	\$338	\$50	\$50	\$0	\$0	\$1,086
	Kaoh Snaeng	4	4	11	\$594	\$270	\$50	\$50	\$0	\$0	\$964
	Anlong Chrey	3	5	10	\$540	\$338	\$50	\$50	\$0	\$0	\$978
	Ou Rai	3	3	10	\$540	\$203	\$60	\$60	\$0	\$0	\$863
	Ou Svay	5	2	12	\$648	\$135	\$100	\$100	\$100	\$300	\$1,383
	Preah Rumkel	8	2	15	\$720	\$135	\$70	\$70	\$100	\$100	\$1,195
	Sam Ang	2	3	9	\$513	\$203	\$50	\$50	\$0	\$0	\$816
	Srae Ruessei	2	2	9	\$513	\$135	\$50	\$50	\$0	\$0	\$748
	Thala Barivat	4	4	11	\$561	\$270	\$100	\$100	\$100	\$400	\$1,531
Total:		128	83	366	\$19,581	\$5,603	\$2,257	\$2,260	\$1,200	\$3,100	\$34,000

Source: UNICEF

13.5.2.3 Seth Koma 2009 Budget and planned Outputs

District	# Comm.	CCWC Ope. Costs	CPS (teachers allowance)	PE	BR	Joint Outreach Activities	Referrals for pregnant women & sick children	CYP	Discretionary fund	Hand Washing Campaign	Total
Sesan	7	\$1,400	\$1,350	\$290	\$480	\$960	\$500	\$200	\$0	\$1,600	\$6,780
Siem Bouk	7	\$1,400	\$1,080	\$460	\$720	\$1,440	\$1,000	\$400	\$0	\$800	\$7,300
Siem Pang	5	\$1,000	\$675	\$0	\$0	\$0	\$0	\$0	\$0	\$200	\$1,875
Stueng Traeng	4	\$800	\$68	\$230	\$360	\$720	\$500	\$400	\$0	\$500	\$3,578
Thala Barivat	11	\$2,200	\$2,633	\$0	\$0	\$0	\$0	\$0	\$0	\$200	\$5,033
Total	34	\$6,800	\$5,805	\$980	\$1,560	\$3,120	\$2,000	\$1,000	\$0	\$3,300	\$24,565

Source: UNICEF

SECTION D: SERVICES AND ORGANIZATIONS

14 Infrastructure

14.1 Lengths of and Expenditure on Roads in 2008 by District

Roads	STG	SeSan	Siem Bouk	Seim Pang	Stung Treng	Thalborevath
Length of paved road in the district in Km	63	0	0	0	63	0
Length of unpaved roads in the district in Km	273	9	66	33	83	81
Amount spent on construction of roads in 2008 (\$)	16,814	n/a	0	8,407	0	8,407
Amount spent on repair and rehabilitation of roads in 2008 (\$)	904,063	n/a	85,000	0	819,063	0

Note 1: Please note that these data are not necessarily complete or correct. The data are derived from government agencies at provincial and district level which used different recording systems, did not always have complete data or were, sometimes, less than willing to share their data.

Note 2: Please be aware that these data are incomplete due to the fact that the amounts for the construction, repair and rehabilitation recorded reflect only funds provided by the government, not the contributions by any other parties.

14.2 Scale of and Expenditure on Irrigation in 2008 by District

Irrigation	STG	SeSan	Siem Bouk	Seim Pang	Stung Treng	Thalborevath
Number of irrigation schemes operating in 2008	1	n/a	n/a	n/a	1	n/a
Total nr of hectares under irrigation in dry season 2008	25	n/a	n/a	n/a	25	n/a
Total funds spent in 2008 on construction of irrigation systems (\$)	n/a	n/a	n/a	n/a	n/a	n/a
Total funds spent in 2008 on rehabilitation/repair of irrigation systems (\$)	48,378	n/a	n/a	n/a	48,378	n/a
Total funds spent in 2008 on operation and maintenance (\$)	n/a	n/a	n/a	n/a	n/a	n/a

Note 1: Please note that these data are not necessarily complete or correct. The data are derived from government agencies at provincial and district level which used different recording systems, did not always have complete data or were, sometimes, less than willing to share their data.

Note 2: Please be aware that the data above are incomplete as these only reflect funds provided by the government, not the contributions by farmers or other parties.

14.3 Power Supply in 2008 by District

Electricity	STG	SeSan	Siem Bouk	Seim Pang	Stung Treng	Thalborevath
Total number of electricity connections to households	2,900	n/a	65	226	2,377	232
Total number of electricity connections to agencies, companies, organizations	31	n/a	0	n/a	31	n/a
Total volume in KWh of electricity consumed last in 2008	3,093,153	n/a	4,320	n/a	3,088,833	n/a
Total amount collected from users for consumed electricity (\$)	929,890	n/a	3,240	n/a	926,650	n/a
Per capita electricity consumption in 2008 in Kwh	146	n/a	0	n/a	124	n/a

Note 1: Please note that these data are not necessarily complete or correct. The data are derived from government agencies at provincial and district level which used different recording systems, did not always have complete data or were, sometimes, less than willing to share their data.

Note 2: These data only record electricity provided by electricity companies and does not include homes powered by generators or batteries (for this information see Section B: General Profile, Part 1: General Information; table 1.3.1 and chart 1.3.4).

Note 3: In most provinces electricity is only provided through town-based networks

Note 4: Per capita consumption is calculated by dividing the total volume of electricity produced in 2008 by the number of people living in each district as per the 2008 census (for the provincial data it is calculated against the number of people living in the province)

15 Health Facilities

Please note that the Operational District (health) boundaries are different from the administrative district boundaries. Therefore the data provided here show the facilities, staff, NGOs etc in each Operational District within the province NOT the usual administrative district.

Acronyms

Com Cov	Commune Covered	MW2	Secondary Midwives
CPA	Complementary Package of Activities	NU1	Primary Nurse
Dr	Doctor	NU2	Secondary Nurse
FDH	Former District Hospital	OD	Operational District
HC	Health Center	Others	Other Staffs
HC (NB)	Health Center no building	PHD	Provincial Health Department
HP	Health Post	Pop 04-05	Population Covered 2004 or 2005
MA	Medical Assistant	RH	Referral Hospital
MPA	Minimum Package of Activities	Vil Cov	Village Covered
MW1	Primary Midwives	VIL-HC	Distance from Village to Health Center

15.1 Health Facilities by Operational District

Stueng Treng	OD	RH	HC	HP
Steung Treng	1	1	10	3
Total	1	1	10	3

15.2 Health Facilities and Staff by Operational District, 2008

This table shows health facilities, number of staff by type and coverage of health facilities in each operational district.

No	Facility Name	Type	Class	Dr	Ma	Nu2	Nu1	Mw2	Mw1	Others	Com Cov	Vil Cov	Pop. 04-05
Steung Treng													
1	Chamkar Leu	HC	MPA	0	0	0	4	0	1	1	3	11	5,489
2	Chrab	HP	Nil	0	0	0	0	0	0	0	1	1	751
3	Kampun	FDH	MPA	0	2	2	5	1	3	11	4	12	6,906
4	Kbal Romeas	HP	Nil	0	0	0	0	0	0	0	1	3	1,581
5	Koh Preah	HC(NB)	None	0	0	0	0	0	0	0	3	8	4,283
6	Preah Rumkel	HC	MPA	0	0	4	2	3	0	0	2	13	7,309
7	Siem Pang	FDH	CPA+MPA	0	1	5	2	1	2	4	5	28	16,441
8	Srae Krasang	FDH	CPA+MPA	0	1	2	3	0	1	9	4	9	7,939
9	Srah Ruessei	HC	MPA	0	0	0	3	2	1	2	2	9	8,660
10	Sre Kor	HC(NB)	None	0	0	0	0	0	0	0	3	10	6,064
11	Stueng Traeng	HC	MPA	0	0	1	3	4	1	0	2	8	17,392
12	Svay Rieng	HP	Nil	0	0	0	0	0	0	0	1	4	2,519
Total:				0	4	14	22	11	9	27	31	116	85,334

Source: MEDiCAM

15.3 Deliveries in 2007, by Operational District

OD	Deliveries	Deliveries at home		Deliveries	Total deliveries	Total deliveries
	at HC	By Health Staff	By TBAs	at RH	by Health Staff	by health staff and TBAs
Steung Treng	248	94	1567	315	657	2224
<i>Sub-total</i>	<i>248</i>	<i>94</i>	<i>1567</i>	<i>315</i>	<i>657</i>	<i>2224</i>

Source: MoH, Annual Statistics 2007

15.4 Major Health NGOs active in the Province, by Operational District

Operational District: Steung Treng

CGA (Cambodia Global Action)

Phone: 023885735, Email: cga.cambodia@online.com.kh, Contact Person: Mao Guech Hourng

FHI/IMPACT (Family Health International/Impact)

Phone: 023211914, Email: info@fhi.org.kh, Contact Person: Song Ngak

MED (Mekong Eyes Doctor)

Phone: 31206432490, Email: y.reifler@mekongeyedoctors.nl, Contact Person: Yvonne JM. Reifler

PFD (Partners for Development)

Phone: 023213335, Email: pdf@online.com.kh, Contact Person: Philippe Guyant

SMCC (Society for Malaria Control in Cambodia)

Phone: 023996400, Email: bonatith@smcc.org.kh, Contact Person: Tith Bona

UNFPA (United Nations Population Fund)

Phone: 023215519, Email: may@unfpa.org, Contact Person: Sok Sokun

VSO (Voluntary Service Overseas(UK))

Phone: 023365380, Email: Helen.bradford@vsoint.org, Contact Person: Helen Bradford

WFP (World Food Program)

Phone: 023212137, Email: mory.heng@wfp.org, Contact Person: Heng Mory

Operational District: Unknown

UNICEF (United Nations Children's Fund)

Phone: 023426214, Email: unicef_phnom_penh@unicef.org, Contact Person: Thazin Oo

WB (The World Bank)

Phone: 023217301, Email: lhawkins@worldbank.org, Contact Person: Simth Beng

16 Education²

16.1 Schools, Classes, Students and Staff in 2007/2008

District	Number of Schools	Disadv. Schools	Number of Classes	Classes in Pagoda	Enrollment		Repeaters		Teaching Staff		Non-Teaching Staff		Total Staff	
					Total	Girl	Total	Girl	Total	Female	Total	Female	Total	Female
Sesan	25	0	144	0	3,444	1,645	733	335	115	33	9	0	124	33
Siem Bouk	26	0	132	0	3,619	1,793	383	166	126	46	19	2	145	48
Siem Pang	28	0	122	0	3,578	1,560	642	248	72	19	9	1	81	20
Stueng Traeng	32	0	271	0	9,124	4,276	597	250	309	166	58	19	367	185
Thala Barivat	46	0	248	0	6,228	3,178	1,286	619	150	49	20	4	170	53
Whole Province	157	0	917	0	25,993	12,452	3,641	1,618	772	313	115	26	887	339
- Urban Area	32	0	271	0	9,124	4,276	597	250	309	166	58	19	367	185
- Remote Area	125	0	646	0	16,869	8,176	3,044	1,368	463	147	57	7	520	154

16.2 Characteristics of Schools and School Principals in 2007/2008

District	Number of Schools				2 - Shift Schools	Floating Schools	Schools in Pagoda	Attached Pre-Sch.	Schools Without		Characteristics of School Principals (Incharge)			
	Pre-Sch.	Primary	College	Lycee					Water Sup.	Toilet	Avg. Age	Avg. Service	U.Sec+ Ed.	Female
Sesan	1	22	2	0	16	0	0	1	10	2	37.8	14.7	2	2
Siem Bouk	4	16	5	1	11	0	1	4	9	4	41.1	17.3	6	2
Siem Pang	1	26	1	0	24	0	0	1	11	7	29.4	9.1	3	2
Stueng Traeng	10	18	2	2	16	0	0	9	7	5	36.8	15.1	10	7
Thala Barivat	1	43	1	1	39	0	3	1	17	4	35.5	13.9	2	5
Whole Province	17	125	11	4	106	0	4	16	54	22	36.0	14.0	23	18
- Urban Area	10	18	2	2	16	0	0	9	7	5	36.8	15.1	10	7
- Remote Area	7	107	9	2	90	0	4	7	47	17	35.8	13.7	13	11

² All the data for section 12 comes from the Ministry of Education, Youth and Sport (MoEYS)

16.3 Enrollment by Level of Education, 2006/2007

District	Number of Schools	Pre-school		Primary		Lower Sec.		Upper Sec.		Total		% Female	
		Total	Girl	Total	Girl	Total	Girl	Total	Girl	Total	Girl	Primary	All Level
Sesan	25	12	5	3,321	1,556	151	73	0	0	3,484	1,634	46.9	46.9
Siem Bouk	25	104	56	2,666	1,304	734	351	0	0	3,504	1,711	48.9	48.8
Siem Pang	28	35	18	3,229	1,409	155	68	0	0	3,419	1,495	43.6	43.7
Stueng Traeng	31	332	164	4,888	2,335	2,085	981	1,586	737	8,891	4,217	47.8	47.4
Thala Barivat	45	17	10	5,809	2,890	348	157	0	0	6,174	3,057	49.8	49.5
Whole Province	154	500	253	19,913	9,494	3,473	1,630	1,586	737	25,472	12,114	47.7	47.6
- Urban Area	31	332	164	4,888	2,335	2,085	981	1,586	737	8,891	4,217	47.8	47.4
- Remote Area	123	168	89	15,025	7,159	1,388	649	0	0	16,581	7,897	47.6	47.6

16.4 Enrollment by Level of Education 2007/2008

District	Number of Schools	Pre-school		Primary		Lower Sec.		Upper Sec.		Total		% Female	
		Total	Girl	Total	Girl	Total	Girl	Total	Girl	Total	Girl	Primary	All Level
Sesan	25	20	9	3,199	1,516	225	120	0	0	3,444	1,645	47.4	47.8
Siem Bouk	26	89	48	2,683	1,323	801	401	46	21	3,619	1,793	49.3	49.5
Siem Pang	28	35	15	3,373	1,476	170	69	0	0	3,578	1,560	43.8	43.6
Stueng Traeng	32	348	175	4,747	2,300	2,220	1,053	1,809	748	9,124	4,276	48.5	46.9
Thala Barivat	46	34	16	5,761	2,969	375	171	58	22	6,228	3,178	51.5	51.0
Whole Province	157	526	263	19,763	9,584	3,791	1,814	1,913	791	25,993	12,452	48.5	47.9
- Urban Area	32	348	175	4,747	2,300	2,220	1,053	1,809	748	9,124	4,276	48.5	46.9
- Remote Area	125	178	88	15,016	7,284	1,571	761	104	43	16,869	8,176	48.5	48.5

16.5 New Intake and Enrollment by Level and Age (Both Sexes), 2007/2008

District	Grade 1 Intake		Primary Enrollment		Grade 7 Intake		L. Sec. Enrollment		Grade 10 Intake		U. Sec. Enrollment		% Over-age Enrollment in		
	Total	Aged 6	Total	Aged 11+	Total	Aged 12	Total	Aged 14+	Total	Aged 15	Total	Aged 17+	Primary	L. Sec.	U. Sec.
Sesan	586	341	3,199	1,011	112	8	225	162	0	0	0	0	31.6	72.0	0.0
Siem Bouk	412	330	2,683	579	329	36	801	499	46	4	46	34	21.6	62.3	73.9
Siem Pang	782	440	3,373	516	63	4	170	127	0	0	0	0	15.3	74.7	0.0
Stueng Traeng	792	646	4,747	858	759	190	2,220	1,276	682	65	1,809	971	18.1	57.5	53.7
Thala Barivat	932	649	5,761	1,692	150	14	375	255	58	5	58	35	29.4	68.0	60.3
Whole Province	3,504	2,406	19,763	4,656	1,413	252	3,791	2,319	786	74	1,913	1,040	23.6	61.2	54.4
- Urban Area	792	646	4,747	858	759	190	2,220	1,276	682	65	1,809	971	18.1	57.5	53.7
- Remote Area	2,712	1,760	15,016	3,798	654	62	1,571	1,043	104	9	104	69	25.3	66.4	66.3

16.6 Condition of School Buildings, 2007/2008

District	Total Number of		Concrete/Brick Structure		Wooden Structure		Bamboo Structure		New Buildings		Buildings Without Good		
	Buildings	Rooms	Buildings	Rooms	Buildings	Rooms	Buildings	Rooms	Repaired	Constructed	Floor	Roof	Wall
Sesan	29	99	17	65	12	34	0	0	1	6	5	1	1
Siem Bouk	29	121	11	50	16	67	2	4	0	5	5	2	7
Siem Pang	33	82	10	38	20	40	3	4	2	9	5	4	7
Stueng Traeng	60	237	35	157	24	78	1	2	1	4	9	5	11
Thala Barivat	59	161	14	53	41	102	4	6	4	7	18	8	17
Whole Province	210	700	87	363	113	321	10	16	8	31	42	20	43
- Urban Area	60	237	35	157	24	78	1	2	1	4	9	5	11
- Remote Area	150	463	52	206	89	243	9	14	7	27	33	15	32

16.7 Condition of Classrooms and Existence of Separate School Office and Library, 2007/2008

District	Number of Classrooms	Number of Classrooms			Classrooms Without Good			Number of furniture needed				Schools with Separate	
		in Pagoda	Repaired	New Constr.	Floor	Roof	Wall	Desks	Chairs	Blk.board	Tchr.Table	Office	Library
Sesan	82	0	2	26	13	3	1	0	10	12	11	4	2
Siem Bouk	95	0	0	22	18	9	23	74	77	16	16	11	8
Siem Pang	69	0	8	22	11	9	16	100	60	10	5	3	2
Stueng Traeng	171	0	2	17	20	11	28	291	155	34	34	14	10
Thala Barivat	136	0	8	20	33	14	28	181	114	24	31	7	3
Whole Province	553	0	20	107	95	46	96	646	416	96	97	39	25
- Urban Area	171	0	2	17	20	11	28	291	155	34	34	14	10
- Remote Area	382	0	18	90	75	35	68	355	261	62	63	25	15

16.8 Community Participation and Financing, 2007/2008

District	Parent Association				Comm. Teachers	Teaching Monks	PAP Fund (Riel)		Number of Schools Obtaining Funds from				
	Exists	Held Meet.	Total	Female			per Student	per School	Sch. Income	Community	Gvt. For building	Abroad	IOs/ NGOs
Sesan	22	21	5	1	0	0	12,222	1,667,635	0	1	0	0	1
Siem Bouk	19	19	5	2	0	0	14,575	2,087,114	1	2	2	0	2
Siem Pang	27	27	7	1	0	0	8,242	1,006,134	0	1	0	0	1
Stueng Traeng	26	26	8	2	0	0	10,441	3,226,376	2	3	1	1	0
Thala Barivat	43	43	5	1	0	0	11,752	1,644,514	0	1	0	0	0
Whole Province	137	136	6	2	0	0	11,298	1,979,952	3	8	3	1	4
- Urban Area	26	26	8	2	0	0	10,441	3,226,376	2	3	1	1	0
- Remote Area	111	110	5	1	0	0	11,850	1,623,831	1	5	2	0	4

16.9 Indicators on Students and Staff by District, 2007/2008

District	Pupil Teacher Ratio	Pupil Staff Ratio	Pupil Class Ratio	Pupil Classroom Ratio	Classes per Classroom	Classroom Area (m2) per Pupil	Percentage of Total Students in				Percentage of	
							Pre-school	Primary	Lower Secondary	Upper Secondary	Non-tching Staff	Female Staff
Sesan	29.9	27.8	23.9	42.0	1.8	1.3	0.6	92.9	6.5	0.0	7.3	26.6
Siem Bouk	28.7	25.0	27.4	38.1	1.4	1.5	2.5	74.1	22.1	1.3	13.1	33.1
Siem Pang	49.7	44.2	29.3	51.9	1.8	0.8	1.0	94.3	4.8	0.0	11.1	24.7
Stueng Traeng	29.5	24.9	33.7	53.4	1.6	1.2	3.8	52.0	24.3	19.8	15.8	50.4
Thala Barivat	41.5	36.6	25.1	45.8	1.8	1.2	0.5	92.5	6.0	0.9	11.8	31.2
Whole Province	33.7	29.3	28.3	47.0	1.7	1.2	2.0	76.0	14.6	7.4	13.0	38.2
- Urban Area	29.5	24.9	33.7	53.4	1.6	1.2	3.8	52.0	24.3	19.8	15.8	50.4
- Remote Area	36.4	32.4	26.1	44.2	1.7	1.2	1.1	89.0	9.3	0.6	11.0	29.6

17 Private Sector organizations in the District

17.1 Registered Companies in 2008, by district

On private sector at commune and/or district level	STG	SeSan	Siem Bouk	Seim Pang	Stung Treng	Thalborevath
Businesses and Companies						
Number of registered agricultural enterprises (except family farms)	12	6	0	2	4	n/a
Number of registered shops, restaurants, transporters and other services	368	2	3	8	350	5
Number of manufacturing companies	2	0	0	0	2	0
Number of registered forestry enterprises	11	6	n/a	1	4	0
Number of registered mining companies	2	0	0	1	0	1
Number of fin/ancial institutions	2	0	0	0	2	0
Number of other commercial institutions	40	0	0	0	39	1
Estimated number of informal enterprises (not registered)	120	n/a	n/a	n/a	120	n/a
Employment						
Number of people employed in 2008 by companies or any other enterprises	416	376	n/a	n/a	40	n/a
Investment						
Amount invested in 2008 by private sector (\$)	-	n/a	n/a	n/a	n/a	n/a
Markets						
Number of markets, operating at least weekly	3	n/a	n/a	1	1	1

Note: These data are not comprehensive as different companies and business are registered with different departments and not all departments were able or willing to provide detailed information. The number of informal enterprises reflects a rough estimate, made at provincial level and could not be verified.

Source: Data from SPPA's

17.2 Credit to Farmers in 2008, by district

Credit	STG	SeSan	Siem Bouk	Seim Pang	Stung Treng	Thalborevath
Volume of credit provided to farmers in 2008 (\$)	531,768	24,707	35,946	n/a	384,644	86,471
Number of farmers receiving credit in 2008	3,043	144	245	n/a	2,145	509
Volume of credit provided to companies in 2008 (\$)	25,000	n/a	n/a	n/a	25,000	n/a

Note: Please note that these data are not necessarily complete or correct. The data are derived from government agencies at provincial and district level which used different recording systems, did not always have complete data or were, sometimes, less than willing to share their data.

SECTION E: MISCELLANEOUS INFORMATION

18 Data on Poverty

18.1 Predicted Poverty Rates for 2009, by commune

The **Predicted Family Poverty Rate** is based on a statistical model (robust multilevel mixed effect regression) at village level developed by the NCDD M&E Unit and uses CDB data for making an estimate of the predicted poverty rate (this is: the portion of total families in the district or commune who are deemed poor) for the following year using current year data.

The basis for this predicted poverty rate also uses IDPoor (a project of the Ministry of Planning with technical assistance provided by GTZ) data.

District	Commune	2004	2009
Sesan	Kamphun	41.90%	35.90%
Sesan	Kbal Romeas	43.60%	40.50%
Sesan	Phluk	44.90%	42.20%
Sesan	Samkhuoy	43.60%	42.50%
Sesan	Sdau	45.20%	41.10%
Sesan	Srae Kor	41.70%	36.50%
Sesan	Ta Lat	44.50%	37.40%
Siem Bouk	Kaoh Preah	42.30%	45.10%
Siem Bouk	Kaoh Sampeay	35.90%	36.20%
Siem Bouk	Kaoh Sralay	39.40%	40.80%
Siem Bouk	Ou Mreah	46.80%	48.30%
Siem Bouk	Ou Ruessei Kandal	42.20%	34.60%
Siem Bouk	Siem Bouk	46.30%	44.60%
Siem Bouk	Srae Krasang	44.10%	34.50%
Siem Pang	Preaek Meas	51.70%	47.20%
Siem Pang	Sekong	44.30%	45.40%
Siem Pang	Santepheap	55%	54%
Siem Pang	Srae Sambour	53.20%	50.30%
Siem Pang	Tma Kaev	55.90%	41.60%
Stueng Traeng	Stueng Traeng	40.60%	14.50%
Stueng Traeng	Srah Ruessei	32.60%	27%
Stueng Traeng	Preah Bat	40.20%	32.10%
Stueng Traeng	Sameakki	43.40%	34.20%
Thala Barivat	Anlong Phe	53.60%	49.60%
Thala Barivat	Chamkar Leu	49.20%	43.50%
Thala Barivat	Kang Cham	48.90%	49.50%
Thala Barivat	Kaoh Snaeng	48.10%	47.90%
Thala Barivat	Anlong Chrey	47%	50.60%
Thala Barivat	Ou Rai	42%	42.40%
Thala Barivat	Ou Svay	48.80%	49.70%
Thala Barivat	Preah Rumkel	44.70%	43.60%
Thala Barivat	Sam Ang	46.60%	39.10%
Thala Barivat	Srae Ruessei	55.70%	49.10%
Thala Barivat	Thala Barivat	43.60%	44.10%

18.2 Poverty data from Survey

The Ministry of Planning IDPoor Program has developed standardized Procedures for Identification of Poor Households in rural areas. These Procedures are implemented using a participatory and consultative process by sub-national government structures and community representatives.

The IDPoor Program is managed by the Ministry of Planning (MOP), in cooperation with the Ministry of Interior's Department of Local Administration (DOLA). The program is supported by the Federal Republic of Germany, with technical assistance provided by German Technical Cooperation (GTZ). In 2009, AusAID also provided funding support to the Program.

Objective

The IDPoor Program aims to implement the Procedures for Identification of Poor Households in rural areas as widely as possible, in order to provide data on the level of poverty of areas and households that can be used by a large range of institutions and organizations for targeting services and development assistance to poor areas and poor households.

Coverage: During 2007, 2008 and 2009 the IDPoor Procedures have been implemented in 18 provinces (with partial or complete coverage), covering a total of around 7000 rural villages. The MOP and a number of NGO partners who are Health Equity Fund Operators have collaborated in collecting this data from different areas.

Categorization: Identified poor households are classified under two poverty categories: Poor Level 1 (very poor), and Poor Level 2 (poor). Households are classified based on data collected using a standard questionnaire, together with consideration by villagers of these households' special circumstances.

Further information: Please go to the IDPoor Program webpage at www.mop.gov.kh/Projects/IDPoor/tabid/154/Default.aspx

This province has not yet been covered by IDPoor