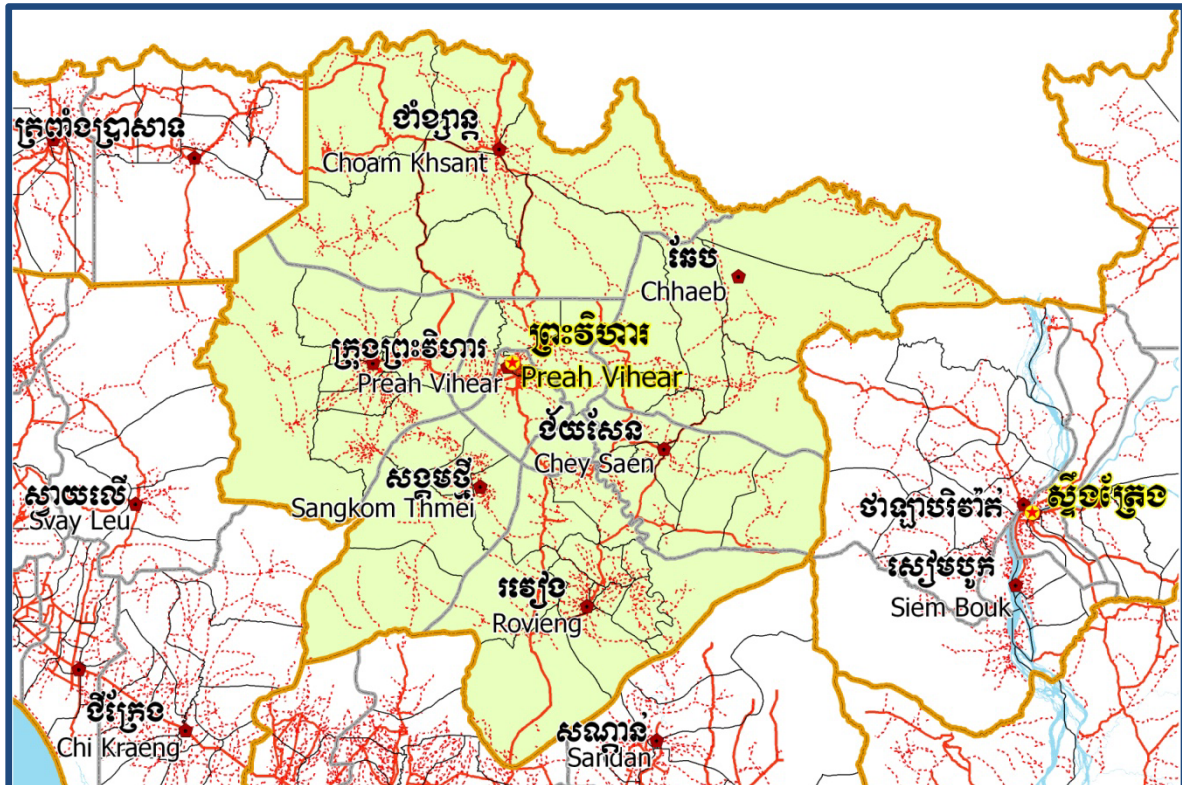


KINGDOM OF CAMBODIA

Nation Religion King



National Committee for Sub-National Democratic Development (NCDD)



Preah Vihear Data Book 2009

GIS code: 13

October 2009

Preah Vihear Data Book

2009

GIS code: 13

Table of Contents

List of Abbreviations.....	i
Glossary	iii
Preface.....	vii
Introduction.....	1
SECTION A: MAPS	3
1. Administration and Infrastructure	5
2. Land Use and Natural Resources.....	7
3. Poverty map.....	9
3.1. 2004 Poverty Map	9
3.2. 2009 Poverty Map	9
4. Land area and distance	11
4.1. Land area by district, mid 2009	11
4.2. Land used area by category, 2006.....	11
4.3. Distances between District Center and Provincial Town	12
SECTION B: PROVINCIAL PROFILE.....	13
5. General Information	15
5.1. Population of the Province.....	15
5.2 Occupations	16
5.3 Property.....	18
6 Infrastructure and Economy	20
6.1 Roads in meters, 2006-2008.....	20
6.2 Sewerage Pipes in meters, 2006-2008.....	20
6.3 Drainage and Bridges	20
6.4 Services in the Province.....	21
6.5 Agriculture	21

7	Social Aspects.....	32
7.1	<i>Education</i>	32
7.2	<i>Health.....</i>	38
7.3	<i>Water and Sanitation.....</i>	40
7.4	<i>Vulnerable groups.....</i>	44
7.5	<i>Migration.....</i>	46
8	Natural Resources and Environment (NRE).....	48
8.1	<i>Families involved with NRE issues, 2006-2008.....</i>	48
8.2	<i>Percentage of Families involved with Natural Resource issues, by District, for 2008.....</i>	48
8.3	<i>Percentage Houses with access to Garbage collection and Families affected by environmental Pollution, by District, for 2008.....</i>	48
8.4	<i>Percentage Families using chemical Fertilizer and chemical Pesticides, by District, for 2008</i>	49
9	Administration and Security	50
9.1	<i>Birth Registration, 2006-2009</i>	50
9.2	<i>Number of unregistered Infants born in 2008, by District</i>	50
9.3	<i>Registered criminal Cases, 2006-2008.....</i>	50
9.4	<i>Registered criminal Cases per 10,000 people, by District, for 2008.....</i>	50
9.5	<i>Number of registered Land Disputes, by District, in 2008</i>	50
10	Gender.....	51
10.1	<i>Reported Domestic Violence, 2006-2008</i>	51
10.2	<i>Percentage of reported cases of Families experiencing domestic Violence, by District, in 2008</i>	51
10.3	<i>Women's involvement, 2006-2008.....</i>	51
10.4	<i>Percentage of Female Participants in Civil Society and of 18-60 year women with uncertain Jobs, by District, in 2008.....</i>	52
10.5	<i>Female-headed Households, 2006-2008.....</i>	52
10.6	<i>Percentage female-headed Households and with Children of less than 5 years old, by District in 2008</i>	52

11	Indigenous People in the District	53
11.1	<i>Ethnic Minorities in the District, 2006-2008.....</i>	53
11.2	<i>Other Minorities in the District, 2006-2008.....</i>	53
	SECTION C: PLANS AND PROJECTS	55
12	Priorities and Plans.....	57
12.1	<i>Priorities of the Districts in the Province for 2009 by Sector.....</i>	57
12.2	<i>Total Expenditure on C/S Fund Projects by sector and district between 2005 and 2008 ...</i>	59
13	District level Projects from 2006 to 2009	60
13.1	<i>District Initiative Infrastructure Projects from 2006 to 2009</i>	60
13.2	<i>District Initiative Service Projects from 2006 to 2009</i>	62
13.3	<i>Inter Commune Council Projects in 2008 and 2009</i>	63
13.4	<i>Provincial Investment Fund (PIF) and District Investment Fund (DIF)</i>	64
13.5	<i>Other projects in the Province.....</i>	68
	SECTION D: SERVICES AND ORGANIZATIONS	69
14	Infrastructure.....	71
14.1	<i>Lengths of and Expenditure on Roads in 2008 by District.....</i>	71
14.2	<i>Scale of and Expenditure on Irrigation in 2008 by District.....</i>	71
14.3	<i>Power Supply in 2008 by District</i>	72
15	Health Facilities	73
15.1	<i>Health Facilities by Operational District</i>	73
15.2	<i>Health Facilities and Staff by Operational District, 2008.....</i>	74
15.3	<i>Deliveries in 2007, by Operational District.....</i>	74
15.4	<i>Major Health NGOs active in the Province, by Operational District.....</i>	75
16	Education	76
16.1	<i>Schools, Classes, Students and Staff in 2007/2008.....</i>	76
16.2	<i>Characteristics of Schools and School Principals in 2007/2008.....</i>	77
16.3	<i>Enrollment by Level of Education, 2006/2007</i>	77

16.4	<i>Enrollment by Level of Education 2007/2008</i>	78
16.5	<i>New Intake and Enrollment by Level and Age (Both Sexes), 2007/2008.....</i>	78
16.6	<i>Condition of School Buildings, 2007/2008</i>	79
16.7	<i>Condition of Classrooms and Existence of Separate School Office and Library, 2007/08..</i>	79
16.8	<i>Community Participation and Financing, 2007/2008</i>	80
16.9	<i>Indicators on Students and Staff by District, 2007/2008.....</i>	80
17	Private Sector organizations in the District	81
17.1	<i>Registered Companies in 2008, by district</i>	81
17.2	<i>Credit to Farmers in 2008, by district</i>	82
	SECTION E: MISCELLANEOUS INFORMATION	83
18	Data on Poverty.....	85
18.1	<i>Predicted Poverty Rates for 2009, by commune</i>	85
18.2	<i>Poverty data from Survey.....</i>	86

List of Abbreviations

#	Number
AGR	Agriculture
BR	Birth Registration
CCs	Commune Councils
C. Pilot	Piloted Commune
C/S	Commune / Sangkat
CBO	Community-Based Organization
CDB	Commune Database
CDPD	Commune Development and Planning Database
CIP	Commune Investment plan
CLTS	Community Led-Total Sanitation
Comm.	Commune
Com Cov	Commune Covered
CPA	Complementary Package of Activities
CPS	Community Preschool
CCWC	Commune Committees for Women and Children
DANIDA	Danish International Development Agency
DDLG	Democratic Development and Local Governance Project (EC-UNDP)
DFID	Department For International Development (UK)
DIF	District Investment Fund
DIP	District Initiative Project
DIS	District Information System
District PDRD	District Office of Rural Development
District WP	District Work Plan
DIW	District Integration Workshop
DMC	Department of Media and Communication
DoLA	Department of Local Administration
Dr	Doctor
DWRM	District Office of Water Resource and Meterology
ECD	Early Childhood education (part of PE)
EMIS	Education Management Information System
Event IC	Celebration of International Days
FDH	Former District Hospital
GTZ	German Society for Technical Cooperation (Gesellschaft für Technische Zusammenarbeit GmbH)
Ha	Hectare
HC	Health Center
HC (NB)	Health Center (no building)
HH	Headed Household
HSI	Intervention for Health
HP	Health Post
HW	Hand Washing
ICC	Inter Commune Council
IFAD	International Fund for Agricultural Development
IND	Industry
Inter-commune	Inter-Commune Project Management Committee or Inter-commune project
IO	International Organization
JICA	Japan International Cooperation Agency
LASED	Land Allocation for Socio-Economic Development
LAU	Local Administration Unit
LGCR	Local Governance for Children's Rights

M&E	Monitoring and Evaluation
MA	Medical Assistant
MAFF	Ministry of Agriculture, Forestry and Fisheries
MEF	Ministry of Economy and Finance
MoEYS	Ministry of Education, Youth and Sports
MoH	Ministry of Health
MoI	Ministry of Interior
MoP	Ministry of Planning
MoWA	Ministry of Women's Affairs
MoWRAM	Ministry of Water Resources and Meteorology
MPA	Minimum Package of Activities
MW1	Primary Midwives
MW2	Secondary Midwives
n/a	Not available
NCD	National Contracts Database
NCDD	National Committee for Sub-National Democratic Development
NGO	Non-Governmental Organization
NREM	Natural Resources and Environment Management
NRML	Natural Resources Management and Livelihood
NU1	Primary Nurse
NU2	Secondary Nurse
OD	Operational District
ODF	Open Defecation Free
Ope. Costs	Operational Costs
Others	Other Staff
PBW	Public Works
PDoEYS	Provincial Department of Education, Youth and Sport
PDRD	Provincial Department of Rural Development
PDWRM	Provincial Department of Water Resource and Meteorology
PE	Parenting Education
PHAST	Participatory Hygiene and Sanitation Transformation
PHD	Provincial Health Department
PID	Project Information Database
PIF	Provincial Investment Fund
PMC	Project Management Committee
Pop 04-05	Population Covered 2004 or 2005
PSDD	Project to Support Democratic Development through Decentralization and Deconcentration
RRD	Rural Road Development
RH	Referral Hospital
RILGP	Rural Investment and Local Governance Project
RPRP	Rural Poverty Reduction Program
RuLIP	Rural Livelihoods Improvement Program
SIDA	Swedish International Development Cooperation Agency
SPPA	Senior Provincial Program Advisor
TBA	Traditional Birth Attendant
UNDP	United Nations Development Project
UNICEF	United Nations Children's Fund
Vil	Village
Vil Cov	Village Covered
VIL-HC	Distance from Village to Health Center
WASH	Water, Sanitation and Hygiene
WRM	Water Resource and Meteorology

Glossary

C/S Fund: The Commune/Sangkat Fund is established and managed by the Government of Cambodia to provide financial support for development projects and administrative costs of Commune/Sangkat Councils. The amount is determined as a percentage of the National Budget (for 2009: 2.8% over the 2008 budget) and is expected to increase gradually over the years. The total 2009 budget under this fund is \$ 27,643,902 (of which \$ 19,272,170 is for Development Projects and \$ 8,371,731 for Administration). Under the Rural Investment and Local Governance Project the World Bank currently reimburses the costs of development projects if these meet the Bank's criteria.

CDB: the Commune Data Base is a national database, compiled by the Ministry of Planning, on the basis of detailed questionnaires, completed at village and commune level, which are then sent to the Departments of Planning for data entry. The most recent round of data collection took place at the end of 2008 (and is reflected in the District Data Books). Commune, District and Provincial Profiles can be generated from this database and should be available from provincial Departments of Planning.

CDPD: the Commune Development and Planning Database is a database maintained by Departments of Planning and Ministry of Planning, recording proposed activities as determined and prioritized by Commune and Sangkat Councils; the Temporary Agreements between these councils and supporting agencies, as decided at District Integration Workshops and details on projects that actually take place at commune, district and provincial levels.

CIP: The Commune Investment Plan is a rolling three-year plan, developed and decided by the Commune or Sangkat Council. It sets priorities and identifies the projects proposed for the years to come.

Commune and Sangkat: the Communes (in rural areas) and Sangkats (in urban areas) are the lowest and smallest units of local government. Councils are elected directly, once in five years, for the 1417 Communes and 204 Sangkats. Within these Communes and Sangkat areas there are 14,119 villages, which have Village Chiefs, but do not constitute a formal level of local government.

DIA/P: the District Investment Initiative/ Project is jointly supported by the MDLF (Multi-Donor Livelihood Facility (supporting the NRM&L Program) and PSDD. In 2009 it covers 106 districts, 60% of the total in the country, with a budget of \$ 3.2 million. It is focused on capacity development in planning, democratic development, public competitive procurement, financial management and service delivery.

DIS: The District Information System is a national database maintained by NCDD, recording resources, staff, revenue, infrastructure and equipment available in the 193 Districts and Khans throughout the country. The last update took place in July 2009.

District, Municipality and Khan constitutes the third level of Government in Cambodia. There are 159 rural Districts, 26 Municipalities and 8 Khans of Phnom Penh Capital. They all have Councils which were, for the first time, elected in May 2009, by the Commune/Sangkat Councilors. These councils have a mandate for 5 years.

DIW: District Integration Workshops are held between July and October, to bring Commune/Sangkat Councils, looking for support for their projects, together with the governmental and non-governmental agencies that may provide support.

ICC: Inter Communes Council projects are executed in 10 provinces under the Democratic and Decentralized Local Governance Project (DDLG). This five year project (2006-2010) is executed by Ministry of Interior and funded by the European Commission and UNDP. The project focuses on improving dialogue partnership and accountability; create a network of Commune Councils at the provincial and national level and support and contribute to local area development for poverty reduction. The work under the ICC component supports investments and services formulated through inter-commune dialogue and planning.

MEDiCAM: A non-profit and non-partisan membership organization for NGOs active in Cambodia's health sector. It is the primary networking agency for the country's health-related NGOs.

NCD: The National Contracts Database is used for the design of investment projects at provincial and district levels and, once a project is approved, for monitoring the progress of investment projects. The NCD has been continuously adapted for use by different donor projects and currently is used for PSDD, DANIDA NRMLP, UNICEF, IFAD, Canadian CIDA projects. The database was first designed in 2005 and is maintained by the NCDD with quarterly updates.

NCDD: the National Committee for sub-National Democratic Development is the inter-ministerial body charged with the implementation of the Organic Law (a key legislative document, adopted in 2008, outlining the envisaged decentralization). NCDD also channels substantial financial assistance by a number of Development Partners, to projects and programs at various levels. This amounted to over \$ 91 million in 2008. More information at: www.ncdd.gov.kh, this website also provides access to reports, manuals, legal documents, details on projects and more.

OD: the Operational Districts are the districts as defined and used by the Ministry of Health. These do not coincide with the 193 (Administrative) Districts and Khans, as used by all other RGC agencies. The Operational Districts are usually larger, and so there are 77 Operational Districts against 193 administrative Districts and Khans. However they do fit within the boundaries of administrative provinces.

PID: The Project Information Database is the database maintained by NCDD at national and sub national level, to follow all aspects of projects by Commune and Sangkat Councils, including the C/S Fund projects.

PIF: The Provincial Investment Fund is allocated to all Provinces and Municipalities according to a population based formula. Part of the fund is earmarked for support to planning activities of the Provincial / Municipal Department of Planning; and to gender mainstreaming activities of the Provincial Department of Women's Affairs. The remaining "un-earmarked PIF" is allocated by PRDC to sectoral technical departments against established criteria and in response to proposals with prioritisation taking into account: priorities formulated by the CS Councils and aggregated by District into District Priority Activities Matrices (DPAM); alignment with national planning and poverty alleviation criteria, complementarity with other planned activities; and performance of the Department concerned in implementation of activities in previous years. With this provisional allocation, the Department then programs activities through the District Integration Process. Finally, the agreed activities, plus support costs amounting to no more than 25% of the total, are included in a sub-contract signed between PRDC and the Department, pursuant to the overall PSDD contract signed between NCDD and PRDC. Total budget has been around \$ 2 million per year.

Province: the 23 Provinces and Phnom Penh Capital City represent the 2nd layer of government. They vary in size, from very small, like Kep (approx. 36,000 people) and Pailin (approx. 70,000 people), or large but with small populations, like Mondul Kiri (over 60,000 people), and Ratanak Kiri (over 153,000) to densely populated and large, like Kampong Cham (over 1.7 million people) and Kandal (approx. 1.4 Million people).

PSDD: the Project to Support Democratic Development through Decentralization and Deconcentration is funded by DFID (UK), SIDA (Sweden) and UNDP and runs from 2006 till the end of 2010 (including a one year extension). Annual budgets range from \$ 11 million to over \$ 18 million. The project provides core technical support to NCDD and to the provinces, financial support to the C/S Fund, District Initiative, Provincial Investment Fund and capacity building support through training, studies and advisory services.

RILGP: The Rural Investment and Local Governance Project is the World Bank funded project that provides substantial support to C/S Fund projects and to developing the required infrastructure, policies, systems and skills needed. It started in 2003 with a Loan for \$ 22 million for 2003-2007 and was then extended with a Grant of \$ 36 million for the period of 2007-2010. Discussions about a possible RILGP 2 are taking place between RGC and the World Bank.

RPRP: the Rural Poverty Reduction Project is a seven years project from 2004 till 2010, funded by IFAD and UNDP and implemented through the Ministry of Agriculture, Forestry and Fishery, supported by the Ministry of Interior and facilitated by NCDD. The project is active the provinces Prey Veng and Svay Rieng and focuses on 120,600 households below poverty line. The objective is poverty reduction with the active participation of the poor through improved livelihoods, Strengthened capacity, Sustainable farming systems and natural resource management, new and/or rehabilitated infrastructure development, increase accessibility to technology, services and markets for their economic and social development.

RULIP: the Rural Livelihoods Improvement Project is implemented by the Ministry of Agriculture Forestry and Fisheries (MAFF)' Project Support Unit- PSU, with the NCDD playing the role of cooperating agency. Funded by IFAD and UNDP, the project will run till 2014. The target group consists of poor households who have little or even no land, few livestock or other assets and often many dependents. The main goal of the project is to directly or indirectly improve the livelihood systems, food security and incomes of a total of 33,900 rural poor, ethnic minority and female headed households in targeted village of Kratie, Preah Vihear and Ratanak Kiri provinces in a sustainable manner.

Seth Koma: The UNICEF funded Seth Koma program focuses on measurable action for children and women. During 2006 -2010 it is implemented in six provinces. Government and UNICEF pursue a set of inter-related goals, addressing critical stages of the life cycle of the child: a) Mothers have safe pregnancies and deliveries and healthy newborns; b) best possible start in life of infant; c) Children enter schools at the right age of six years; d) Children are protected from exploitation, abuse, violence, discrimination and other risks; and e) Youth and adolescents acquire life skills, express their views, participate in the decisions.

Preface

The Government of Cambodia attaches great importance to optimal use of scarce resources and to participatory planning and management at all levels. The Organic Law which was adopted in 2008 provides the legal context for further steps towards improving and decentralizing planning, management and monitoring, and towards greater accountability and transparency of institutions at sub-national levels.

The Government has established elected Councils at the sub-national levels, and we will progressively give them the responsibilities, together with the human and financial resources, to deliver a wide range of public services. They will be more democratic, more efficient, more transparent and accountable, better at addressing gender and other inequalities, and at fighting corruption. We recognize that development does not come from government alone; it needs the involvement of citizens, civil society and the private sector, and the new system will facilitate this.

A central element in this process is the availability of information on any aspect of development to all concerned parties. The newly elected Councillors at Provincial level, Provincial line departments operating, but also NGOs, Development Partners and citizens throughout Cambodia need information on problems and requirements, resources and opportunities, services and agencies, plans and projects. They will need such information to better understand the present situation, set targets for the future, monitor progress, know what others are doing and to apply resources wisely and this is the reason the Provincial Data books will be so valuable.

The Provincial Data Books are a major step towards full transparency and towards informed planning and decision-making. They provide all available data at Provincial and District level in easily accessible formats, in Khmer and English. This is in addition to the more detailed District Data Books which have been produced for all Districts, which show Commune level information as well.

This is the first time in Cambodia (and possibly in South East Asia) that such detailed information is made so widely available and NCDD should be commended for the hard work that has gone into this. We also thank the Ministry of Planning, which provided the detailed data of the Commune Data Base, the sectoral ministries and provincial authorities who contributed data and the Development Partners who provided financial support.

It is our sincere hope that the publication of the Data Books will strengthen capacities, especially at provincial and district levels, for evidence-based development planning. We also hope that this information will deepen the understanding among Ministries, Provincial Authorities, Development Partners, NGOs and research agencies of the realities at commune and district levels.

We call upon all to use and distribute this information, complement or correct where appropriate and to contribute new data in the years to come.

28th March 2010

Sar Kheng

Deputy Prime Minister, Minister of Interior
and Chairman of NCDD

Introduction

Purpose

The purpose of the Provincial Data Books is to bring together information on any aspect of life and development of Provinces and Districts, and make this widely available. The primary targets are the newly elected Provincial Councilors, provincial level line departments, other provincial agencies, Development Partners and NGOs operating at this level. They need detailed knowledge on current living conditions, natural resources, infrastructure, agriculture and other economic activities, current service levels, past and planned projects and available resources.

While much information exists on many of the above aspects, it is often hard to access that information and much is lost to reports, databases and statistics that are not widely shared. Data are often only available in one language and often out-of-date, and many reports cover only one sector or region.

We found that these problems are especially acute at the district level and much effort has been put into producing **District Data Books for all Districts, Municipalities and Khans**, which show data at District/Municipality/Khan level and at Commune/Sangkat level. These can be obtained from NCDD or accessed through the NCDD website. However, in the context of decentralization the Provinces may also become a more significant level of local government and development planning, and a source of technical support to district level planning. This creates an urgent need for wide-ranging data to be used for setting base-lines, planning and prioritizing, monitoring and learning.

Approach

We have attempted to identify and compile all available statistics, reports, maps and other data at province and/or district level. From this we have selected information that is available for all or most provinces, reasonably reliable and up-to-date, sufficiently detailed and of possible interest to development planners, decision makers, agencies and citizens.

The major sources of the information in these Provincial Data Books are:

- a) The Commune Data Base information over the years 2006 to 2009 (the most recent data were collected late last 2008)
- b) Detailed information directly collected from the Ministry of Health, the Ministry of Information, the Ministry of Education, Youth and Sports and (for maps) the Ministry of Land Management, Urban Planning and Construction
- c) The Project Information Database (PID) at NCDD (up-to-date)
- d) The Commune Development and Planning Database (CDPD) (up to date)
- e) The National Contracts Database (NCD) (up to date)
- f) Direct data collection at provincial and district level on private sector, irrigation, roads, and electricity, through provincial agencies
- g) Medical data collected from MediCam
- h) The ID Poor Project – for poverty data on a number of provinces and districts
- i) NCDD's work on predictive poverty rates
- j) Specific projects for project outputs, expenses and budgets (Seth Koma, RILGP, RPRP and ICC)

Limitations of the data

We are fully aware that the data we collected are not always complete, consistent or correct. While we have rejected information that was wrong or very incomplete, we decided not to aim for statistical and scientific perfection, but to include information that is useful, relevant and comprehensive. We also accepted different sources for the same data as this may encourage discussion on the quality of the respective data.

We strongly encourage anyone who notes errors or incompleteness in these data to contact us and to share their data. We hope that the next round of producing such Provincial Data Books can draw on wider sources and more complete data.

We encourage the Provincial Agencies, who can receive these data also in digital format, not only to use these for their planning and monitoring, but also to start correcting and updating these data and to share new data with NCDD for future use.

Contents

The information in the following pages is organized in five sections:

a) Geographical data: this section provides maps on infrastructure and administration and on land use and natural resources management. These maps are also provided in large format to all Provinces.

b) Provincial Profile: this presents wide ranging data, covering 2006 – 2009, at provincial and district level, extracted from the Commune Data Base, but edited for better understanding.

c) Plans and Projects: this section presents development priorities determined by Commune and Sangkat Councils, outputs and expenditure of major projects at Province and District level over 2006 – 2008, and plans and budgets for 2009.

d) Services and Organizations: this section provides details on key infrastructure (roads and related infrastructure, electricity, irrigation systems) and services in health and education at Province and District level. It also provides information on private sector agencies active in the Province.

e) Poverty Data: this section provides predicted poverty rates for 2009 for all districts and communes and detailed poverty data compiled and processed by the ID Poor project for those that have been covered by the project.

The future

It is our sincere hope that this is the start of a longer-term process. We hope that a next edition of these Provincial Data Books will offer more comprehensive, and up-to-date information. We hope that the Provincial Administrations will not only start using this information, but also improve and update it. For this they are all provided with the full data set in digital format.

We invite agencies, projects and experts to send reports, statistics and maps that could be used for a next version to us and we invite all users of the Provincial Data Books to inform us about errors, updates and inconsistencies. Please contact us through info@ncdd.gov.kh

We now invite you to browse through this data book. You may open this randomly or use the table of contents and go to the aspects that have your special interest.

We hope that you will be informed, surprised and assisted. We hope, above all, that this information will lead to a deeper understanding of causes and effects of poverty, to purposeful decisions on how to tackle those causes and to greater transparency in using scarce resources for the benefit of all.

SECTION A: MAPS

1. Administration and Infrastructure

There will be a real A3 map (fold out) in color or an A4 color map

2. Land Use and Natural Resources

There will be a real A3 map (fold out) in color or an A4 color map

3. Poverty map

The 2004 and 2008 will be A4 size on an A3 page, so it can be folded out and they can be compared side by side

3.1. 2004 Poverty Map

3.2. 2009 Poverty Map

4. Land area and distance

4.1. Land area by district, mid 2009

District	Total Land Area (ha)	Forest Land Area (ha)		Cultivation Land Area (ha)	Construction Land Area (ha)	Other Land Area (ha)
		Total	Flooded Forest Area			
Chey Saen	109,933	102,894	225	5,539	1,500	-
Chhaeb	253,802	236,438	-	2,328	353	14,683
Choam Ksant	348,311	341,793	-	4,778	1,740	-
Kuleaen	178,800	162,119	-	10,428	6,253	-
Rovieng	218,300	210,302	-	7,057	615	326
Sangkum Thmei	132,366	121,842	-	7,020	404	3,100
Tbaeng Mean Chey	64,397	53,781	-	4,529	3,962	2,125
Preah Vihear	28,488	12,147	-	7,831	4,487	4,023
Total	1,334,397	1,241,316	225	49,510	19,314	24,257

Source: District Information System, DoLA

4.2. Land used area by category, 2006

Land Type	Area in Ha
Urban Settlement	980.26
Village Settlement	3,972.03
Airfield	25.79
Wet season rice	45,377.51
Cropland	1,684.19
Irrigated Cropland	11.78
Timber/Forest Plantation	99.81
Swidden	2,564.87
Dry Evergreen broad leafed forest (NE)	249,864.65
Deciduous forest	703,034.30
Dry Deciduous (Open) forest	54,906.34
Mixed forest (evergreen and deciduous)	162,161.25
Riparian forest	79,879.32
Secondary forest	21,928.27
Flooded Forest	16.07
Grassland	2,234.21
Abandoned field covered by grass	28,349.76
Shrubland	5,141.34
Abandoned field covered by shrub	14,316.02
Shrubland and scattered trees	13,995.24
Lake	419.09
Reservoir	224.63
River	1,965.68
Marsh	9,938.45

Source: GIS data, Land Used 2006, MLMUPC

4.3. Distances between District Center and Provincial Town

District	Distance in Km
Chey Saen	60
Chhaeb	0
Choam Ksant	99
Kuleaen	45
Rovieng	90
Sangkum Thmei	72
Tbaeng Mean Chey	12
Preah Vihear	2

Source: *Provincial Administration*

SECTION B: PROVINCIAL PROFILE¹

¹ All data in this section come from the Commune Database (CDB) unless otherwise specified. These include primarily new CDB data, collected late 2008, and some data from earlier years.

5. General Information

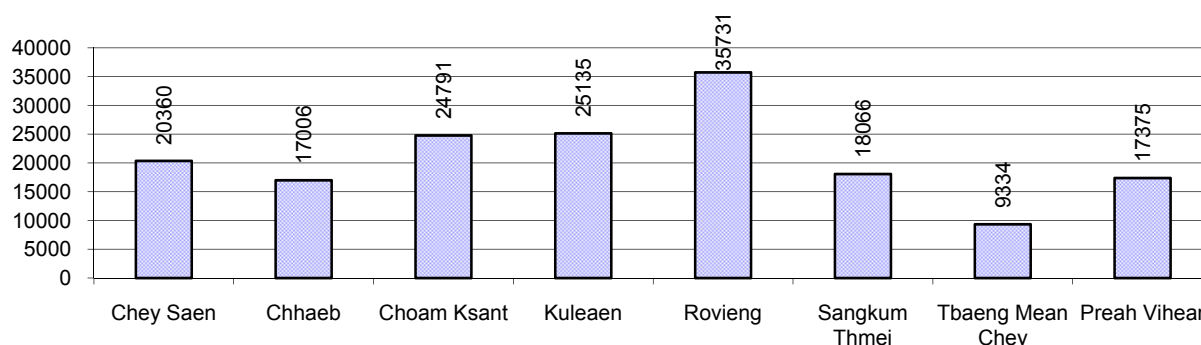
5.1. Population of the Province

5.1.1 Total Population

Number of families	2005	2006	2007	2008
Total number of families	29,394 families	31,300 families	33,032 families	34,963 families
Increase (+)/Decrease (-) in nr of families		6%	6%	6%
Total population	143,565 pers	149,402 pers	157,132 pers	167,798 pers
Increase (+)/Decrease (-) in nr of people		4%	5%	7%
Number of female Headed Households (HH)	3,272 families	3,224 families	3,948 families	3,445 families

Note: Percentages of population and increase/decrease are calculated on basis of the previous year. A negative sign in front of the percentage indicates a decrease in population.

5.1.2 Population, by District, in 2008



5.1.3 Population, by Age Group, 2006-2008

Population by age group	2006	2007	2008	
	%	%	%	Number
Age 0-5 years (as percentage of the population)	17%	17%	17%	28,180 persons
Male 0-5 yrs	50%	51%	51%	14,363 persons
Female 0-5 yrs	50%	49%	49%	13,817 persons
Age 6-17 (as percentage of the population)	32%	32%	31%	52,671 persons
Male 6-17 yrs	50%	50%	50%	26,536 persons
Female 6-17 yrs	50%	50%	50%	26,135 persons
Age 18-60 (as percentage of the population)	47%	47%	47%	78,258 persons
Male 18-60 yrs	48%	48%	49%	38,252 persons
Female 18-60 yrs	52%	52%	51%	40,006 persons
Age 61 above (as percentage of the population)	4%	5%	5%	8,689 persons
Male 61	46%	48%	47%	4,094 persons
Female 61	54%	52%	53%	4,595 persons

Note: The overall percentage for each age group is calculated on the basis of the total population. The gender distribution of each group is calculated on the basis of the population within that particular age group.

5.2 Occupations

5.2.1 Percentage of families with a particular Occupation, 2006-2008

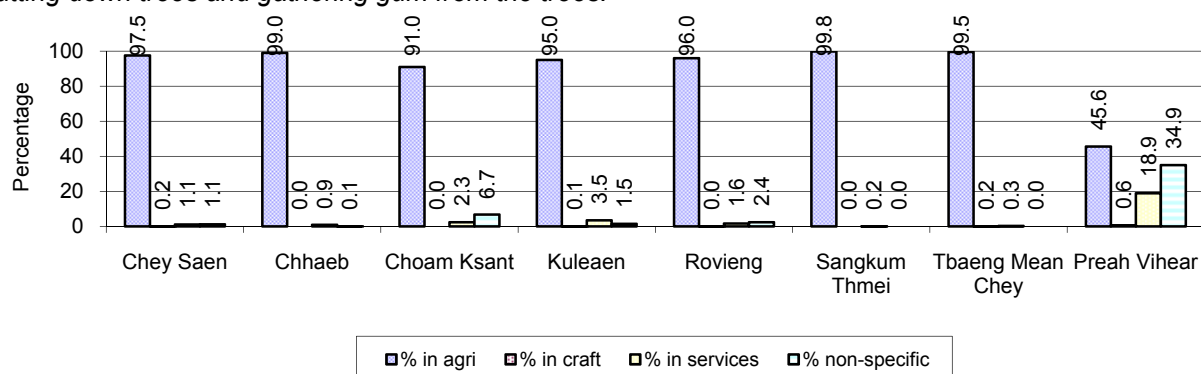
This table shows the percentage of the population who have a particular occupation (job), for example the percentage of the population in the district who are rice farmers, furniture crafter, trader, etc.

Description	2006	2007	2008	
	%	%	%	Number
Families whose main occupation is agriculture	92%	92%	91%	31,658 Families
Families whose primary occupation is rice farming	88%	86%	84%	29,416 Families
Families whose primary occupation is cultivating long-term crops	1%	1%	1%	329 Families
Families whose primary occupation is cultivating short-term crops	2%	5%	5%	1,627 Families
Families whose primary occupation is cultivating vegetable	0%	0%	0%	132 Families
Families whose primary occupation is fisherman	0%	0%	0%	56 Families
Families whose primary occupation is livestock farmer	0%	0%	0%	22 Families
Families whose primary occupation is NTFP collection	0%	0%	0%	76 Families
Families whose main occupation is craft work	0%	0%	0%	42 Families
Families, whose main occupation is in furniture craft, wooden, rattan, vine, bamboo	0%	0%	0%	25 Families
Families whose main occupation is in metal, aluminum, glass goods production	0%	0%	0%	3 Families
Families whose main occupation is food production	0%	0%	0%	3 Families
Families whose main occupation is tire, plastics and rubber goods production	0%	0%	0%	0 Families
Families whose main occupation is textile, clothing goods production	0%	0%	0%	5 Families
Families whose main occupation is in other production, not listed above	0%	0%	0%	6 Families
Families whose main occupation is services	3%	4%	4%	1,244 Families
Families whose main occupation is trade	1%	2%	2%	720 Families
Families whose main occupation is repair	0%	0%	0%	148 Families
Families whose main occupation is providing transport services	0%	0%	0%	135 Families
Families whose main occupation is providing other services	1%	1%	1%	241 Families
Families whose main occupation is not clear (or multi)	5%	4%	6%	2,019 Families

Note: The occupation percentages are calculated on the basis of the total number of families.

5.2.2 Percentage Families that work in one of four occupational sectors, by District in 2008

This table indicates the percentage of families involved in one of four occupation types: agriculture, craft, services or non-specific (other). Please note agriculture includes forestry activities such as cutting down trees and gathering gum from the trees.



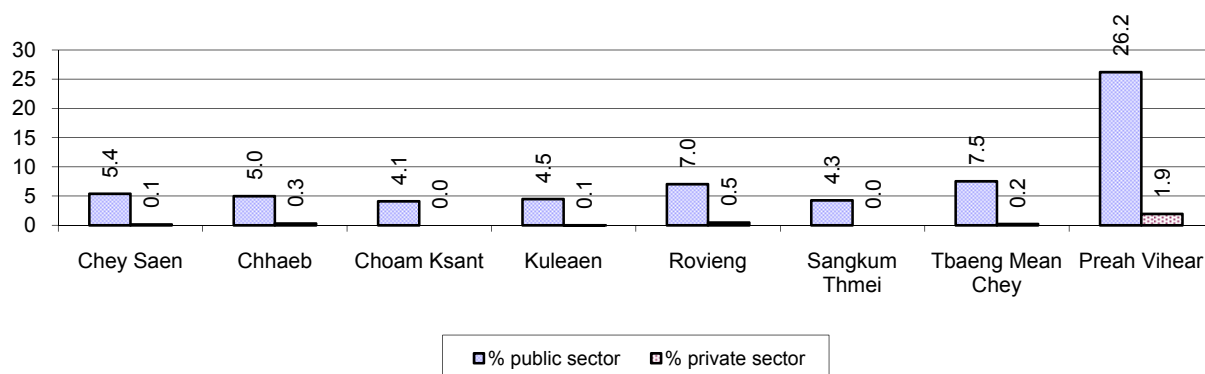
Note: Calculated on the basis of the total number of families within a province.

5.2.3 Percentage of Families with public Sector, private Sector or uncertain Jobs, 2006-2008

Description	2006	2007	2008	
	%	%	%	Number
Families that have a family member who is a government official, staff or worker	6%	7%	8%	2,666 families
Families that have a family member who is a private sector staff or worker	1%	0%	0%	130 families
Number of people aged 18-60 with uncertain/irregular jobs	1%	3%	2%	1,910 persons

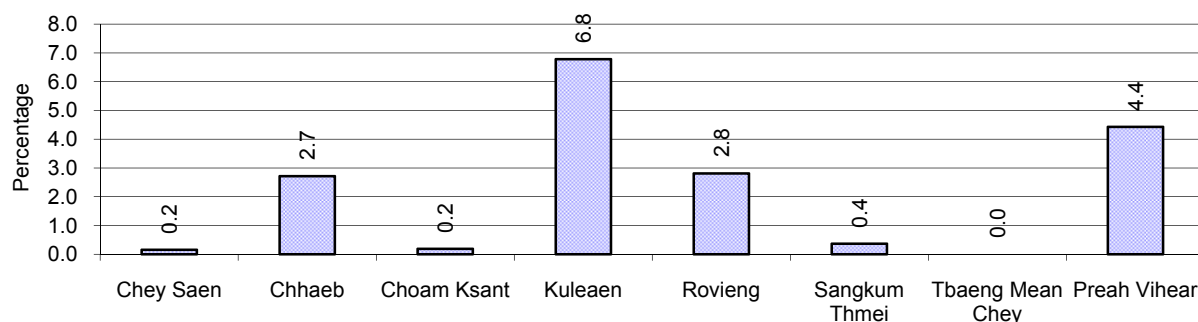
Note: In the first two rows percentages are calculated on the basis of the total number of families. In the third row the percentage is calculated on the basis of the total number of people aged 18-60 years.

5.2.4 Percentage of Families with public or private Sector Jobs, by District in 2008



Note: Calculated on the basis of the total number of families in the district

5.2.5 Percentage of People aged 18-60 years with uncertain/irregular Jobs, by District, in 2008.



5.3 Property

5.3.1 Housing types and facilities, 2006-2008

This table shows the percentage of people living in a certain type of house. It also indicates how many houses have electricity or battery powered lights and how many have TV.

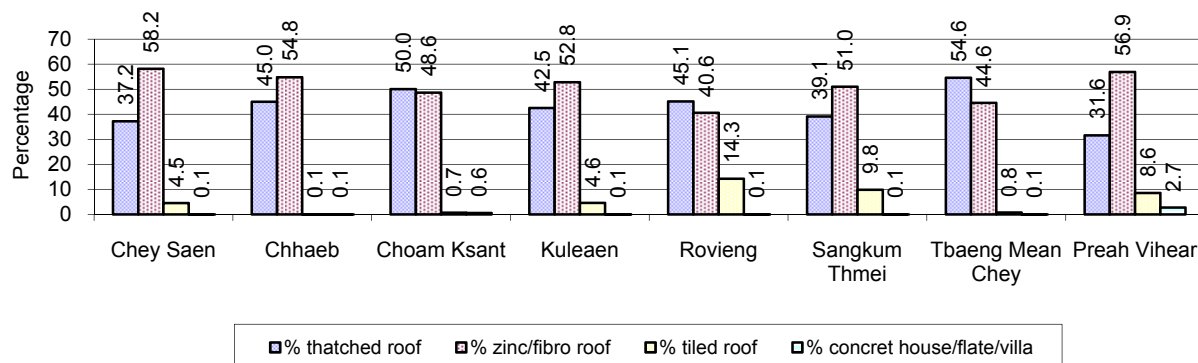
House Type	2006 %	2007 %	2008	
			%	Number
House with thatched roof	51 %	47 %	43 %	13,631 houses
House with zinc/fibro roof	43 %	47 %	50 %	15,923 houses
House with tiled roof	5 %	6 %	6 %	2,015 houses
Flats/apartments (with many families living)	0 %	0 %	0 %	56 houses
Concrete house or flat (with one family living)	0 %	0 %	0 %	88 houses
Villa house	0 %	0 %	0 %	5 houses
Houses with electricity	5 %	7 %	7 %	2,356 houses
Houses with battery light	20 %	24 %	29 %	9,246 houses
Houses with TV	10 %	15 %	19 %	5,876 houses

Note: Calculated against the total number of houses

5.3.2 Families living on public Land or without a permanent House

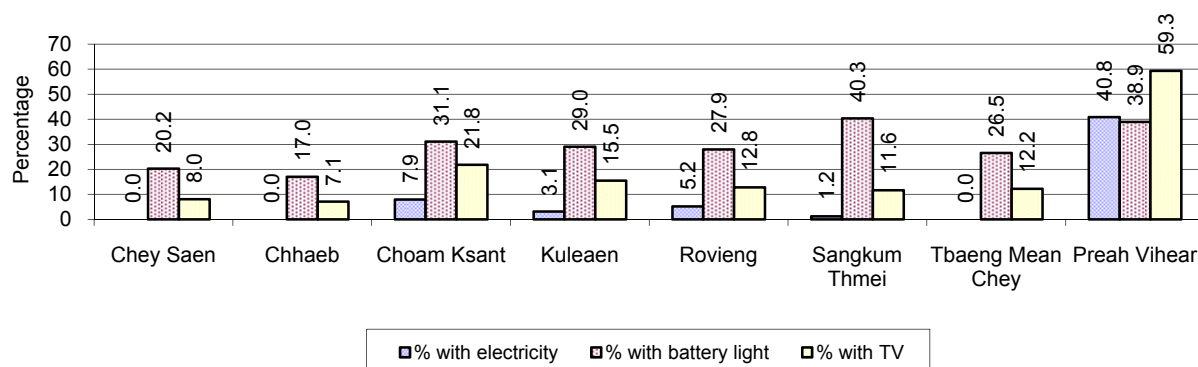
Living situation	2006	2007	2008
Families living in a house on public land	113 families	299 families	311 families
People, without permanent housing	107 person(s)	165 person(s)	67 person(s)

5.3.3 Percentage of Population living in a particular type of House, by District, in 2008



Note: Calculated against the total number of houses in each district

5.3.4 Percentage of Houses with Electricity, Battery Lights and/or TVs, by District, in 2008



Note: Calculated against the total number of houses in each district

5.3.5 Types of Vehicles and their ratio to Families, 2006-2008

This table shows the number of families per vehicle in the province. The last column shows the total number of each type of vehicle in the province for 2008.

Description	2006 ratio	2007 ratio	2008	
			Ratio	Number
Bicycle and bicycle with trailer	3	3	3	11,955
Ox-carts and horse-carts	3	4	4	9,621
Motorbike/with trailer	5	4	3	11,108
Motor tri-cycle	N/A	33,032	34,963	1
Large Transportation				
Total number of cars/trucks	95	68	60	578
Locally made vehicles	680	341	280	125
Trucks for goods transport	237	209	206	170
Buses/mini buses for passengers	2,608	3,003	2,331	15
Family cars	227	149	130	268
Agriculture machinery				
Tractors used for plowing	921	972	777	45
Power-tillage used for plowing	13	10	8	4,258
Other type of machinery				
Other type of machinery	313	446	564	62
Water transportation				
Row boats	50	48	50	694
Total number of motor boats	119	138	296	118
Motor boats used for fishing	139	166	353	99
Motor boats used for passengers	1,647	1,436	N/A	0
Motor boats used for goods transporting	1,739	1,943	1,840	19

Note: Ratio of families to a particular type of vehicle is the result of the total number of families divided by total number of that type of vehicle. Other types of vehicles, such as bulldozer, excavator, rollers etc. are not listed.

6 Infrastructure and Economy

6.1 Roads in meters, 2006-2008

Description	2006	2007	2008
Bituminous road	27,000 m	1,500 m	3 m
DBST, Macadam road	1,500 m	16,000 m	8,000 m
Concrete road	0 m	0 m	0 m
Laterite road	132,466 m	138,143 m	176,630 m
Constructed earth road	21,330 m	6,530 m	28,735 m
Un-constructed earth road	306,716 m	121,313 m	275,133 m

6.2 Sewerage Pipes in meters, 2006-2008

Description	Sewerage pipe length		
	2006	2007	2008
Total length of sewage pipe, diameter 30-50 cm	116 m	20 m	36 m
Length of newly constructed sewage pipe, diameter 30-50 cm	0 m	25 m	25 m
Length of sewage pipe, diameter 30-50 cm needs repair/rehabilitation	0 m	0 m	0 m
Total length of sewage pipe, diameter of pipe 60-100 cm	570 m	671 m	680 m
Length of newly constructed sewage pipe, diameter 60-100 cm	210 m	256 m	194 m
Length of sewage pipe, diameter 60-100 cm needs repair/rehabilitation	61 m	11 m	10 m
Sewerage pipe, diameter of pipe over 100 cm	207 m	89 m	5 m
Length of newly constructed sewage pipe, diameter over 100 cm	54 m	0 m	10 m
Length of sewage pipe, diameter over 100 cm needs repair/rehabilitation	60 m	0 m	0 m

6.3 Drainage and Bridges

Construction Type	2006		2007		2008	
	place(s)	Length	place(s)	Length	place(s)	Length
Single pipe culvert	122	889m	127	902 m	130	986 m
Double-pipe culvert	40	556m	12	93 m	46	216 m
Box pipe culvert	8	101m	0	0m	4	39 m
Wooden bridge	57	800m	44	458m	55	818 m
Concrete bridge	10	150m	4	56m	5	96 m
Bale bridge	13	360m	2	156m	0	0 m
Spillway construction	0	0m	2	10m	2	14 m

6.4 Services in the Province

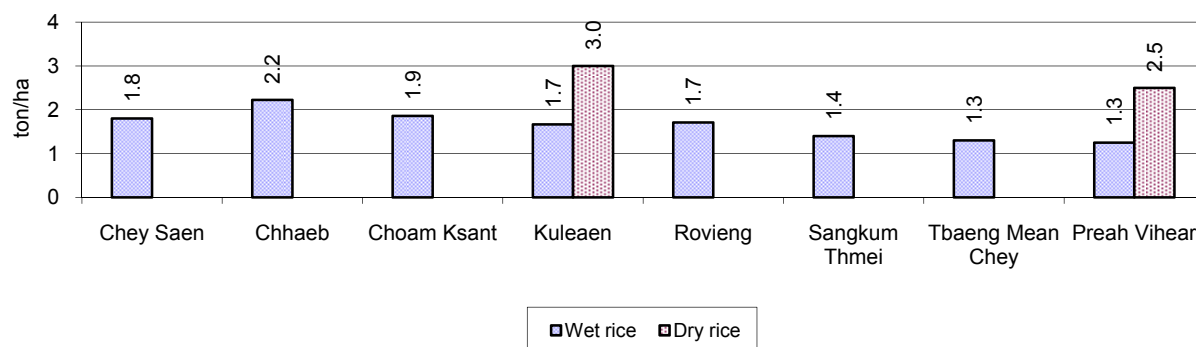
Descriptions	Number of places by year		
	2006	2007	2008
Public			
Electricity generating stations	47	50	16
Health clinics	6	9	7
Private			
Bicycle and motorcycle repair places	112	228	161
Agricultural machinery, tools and equipment repair places	18	14	13
Electronic tool repair places	12	23	30
Battery-charging services	236	309	220
Handicraft places, wooden furniture and forest by-products	94	67	54
Other handicraft places (excluding furniture)	39	9	2
Small-scale services (hairstylist, phone service, massage, Karaoke, etc)	139	109	123
Small-scale food shop businesses (Food, groceries, drink shop, etc)	142	78	81
Small-scale rice mills	1,428	2,009	2,090
Medium or large-scale rice mills	20	22	21
Small-scale markets	7	7	8
Large-scale market	1	3	1
Alcohol refinery places	60	97	17
Pharmacies and small drug stores	4	21	41
Hotels	0	0	0
Guest houses	19	20	17
Restaurants	4	4	9
Gasoline stations	8	12	9

6.5 Agriculture

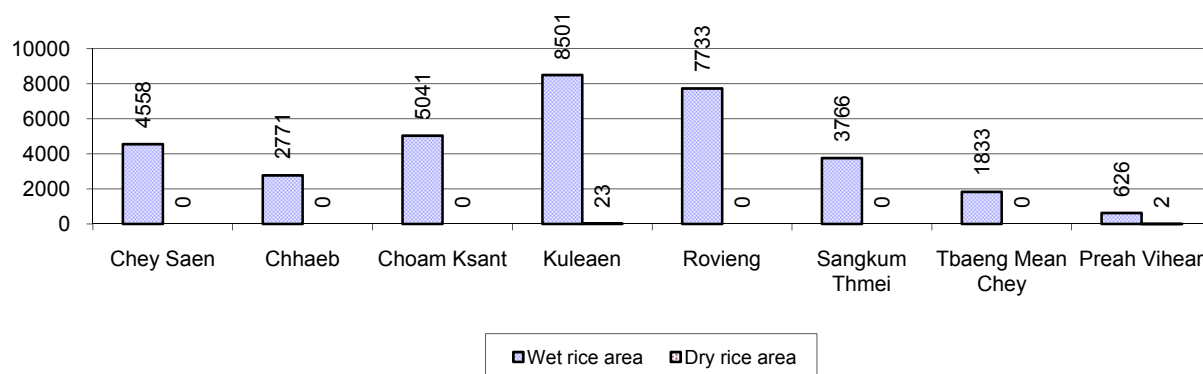
6.5.1 Rice cultivation in the Province, 2006-2008

Description	2006	2007	2008
Total dry rice land area	50 ha	57 ha	56 ha
Actual dry rice cultivation area	21 ha	26 ha	25 ha
% actual cultivation to total land	42%	46%	45%
Total dry rice production	47 tonne(s)	61 tonne(s)	69 tonne(s)
Average dry rice yield	2.3 tonne(s)/ha	2.3 tonne(s)/ha	2.8 tonne(s)/ha
Total wet rice land area	32,833 ha	35,468 ha	36,090 ha
Actual wet rice cultivation area	30,372 ha	34,232 ha	34,829 ha
% actual cultivation to total land	93 %	97%	97%
Total wet rice production	50,542.24 tonne(s)	60,605.44 tonne(s)	60,381.94 tonne(s)
Average wet rice yield	1.7 tonne(s)/ha	1.8 tonne(s)/ha	1.7 tonne(s)/ha
Total intensive rice land area	1 ha	0 ha	639 ha
Actual intensive rice cultivation area	- ha	- ha	- ha
Average intensive rice yield	- tonne(s)/ha	- tonne(s)/ha	- tonne(s)/ha
Actual upland rice cultivation area	2,212 ha	2,064 ha	2,118 ha
Total upland rice production	3,002 tonne(s)	2,784 tonne(s)	2,763 tonne(s)
Average upland rice yield	1.4 tonne(s)/ha	1.3 tonne(s)/ha	1.3 tonne(s)/ha

6.5.2 Estimated wet and dry Season Rice Yield in tonne(s)/Ha, by District, in 2008



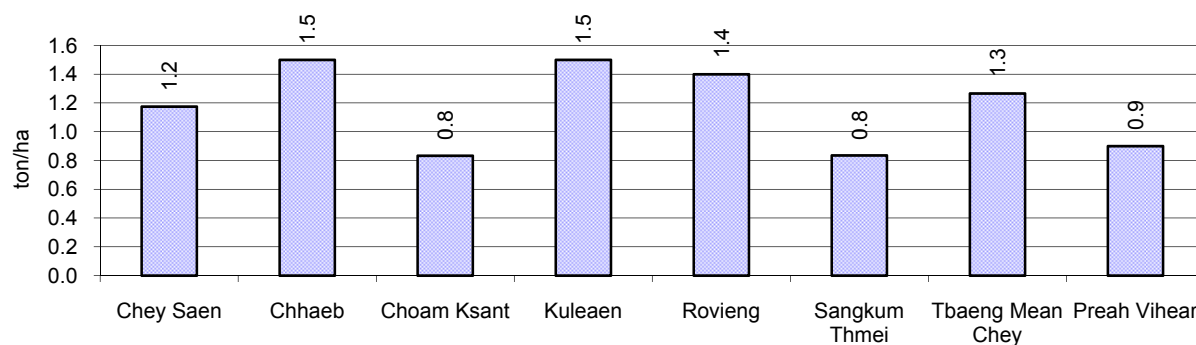
6.5.3 Cultivated wet and dry Season Rice areas in Ha, by District, in 2008



6.5.4 Estimated intensive Rice Yields in tonnes/Ha, by District, for 2008

There was no intensive rice cultivated in this province in 2008

6.5.5 Estimated upland Rice Yield in tonnes/Ha, by District, for 2008

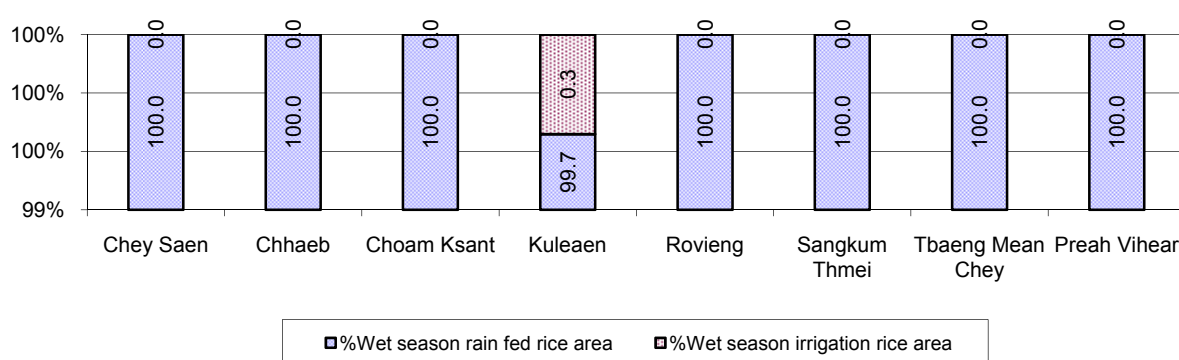


6.5.6 Wet season Rice irrigation, 2006-2008

Description		2006 %	2007 %	2008	
				%	Number
Total area of wet season rain fed rice land		98%	100%	100 %	34,800 ha
Percentage of wet season rice land that is irrigated; and for 2008 area in Ha		2 %	0 %	0 %	29 ha
Where	Area irrigated from canal/dam	12 %	65 %	34 %	10 ha
	Area irrigated from river, stream, lake, natural pond	88 %	35 %	66 %	19 ha
	Area irrigated from drilled well	0 %	0 %	0 %	0 ha
	Area irrigated from dug pond	0 %	0 %	0 %	0 ha

6.5.7 Water sources for wet Season Rice Cultivation, by District, in 2008

This chart shows the percentage of wet season rice cultivation receiving water from rain (natural) and from irrigation.



6.5.8 Access to Irrigation

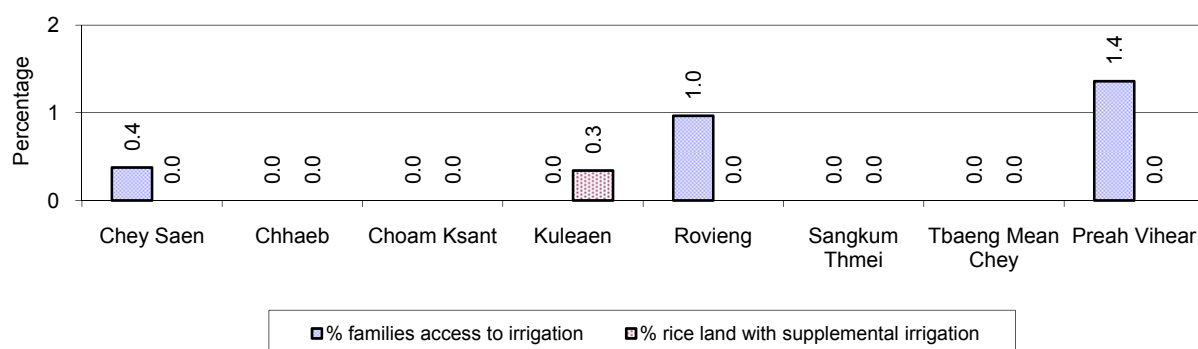
Description	2006 %	2007 %	2008	
			%	Number
Families who have access to irrigation water	0%	0%	0%	90 families
Families who have irrigation wells	0%	0%	0%	25 families

Note: Calculated against the total number of families are rice farmers

6.5.9 Number of Irrigation Wells, 2006-2008

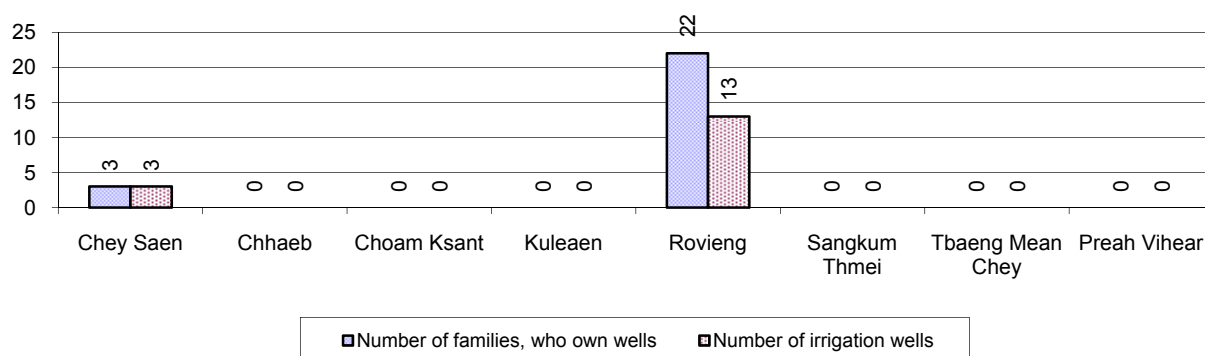
Description	2006	2007	2008
Number of irrigation wells	0 wells	71 wells	16 wells

6.5.10 Percentage of Families with access to (supplemental) Irrigation for wet Season Rice cultivation, by District, in 2008



Note: % of families, with access to irrigation is calculated against the total number of families, whose main occupation is rice farming. Irrigated wet rice land area is calculated against the total actual wet rice land cultivated areas

6.5.11 Irrigation Wells, by District, in 2008

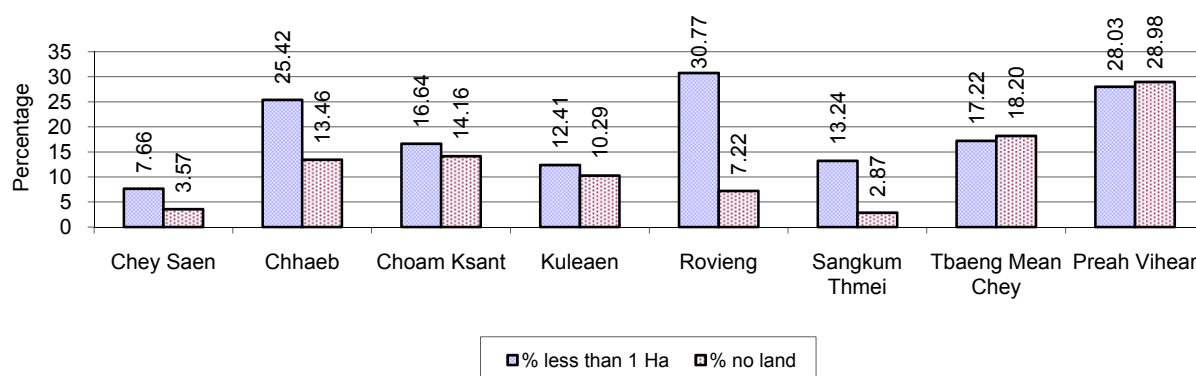


6.5.12 Farmers owning less than one hectare of Rice Land

Description	2006	2007	2008	
	%	%	%	Number
Families who have less than one hectare of rice land	17%	20%	19%	5,570 families
Families who do not own any rice land	8%	10%	10%	2,870 families

Note: Calculated on basis of total number of families who are rice farming

6.5.13 Percentage of Farmers with less than one Hectare or no Rice Land, by District, in 2008

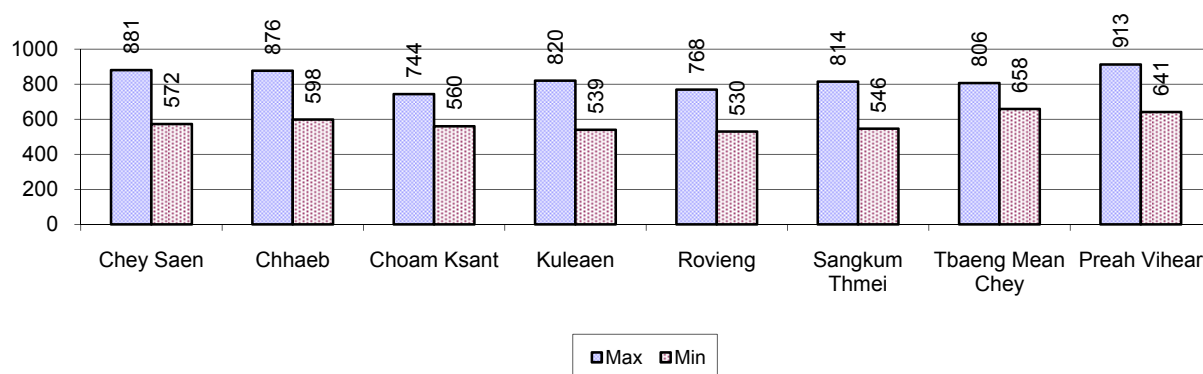


Note: Calculated on basis of total number of families who are rice farming

6.5.14 Average farm-gate Prices of Rice, 2006-2008

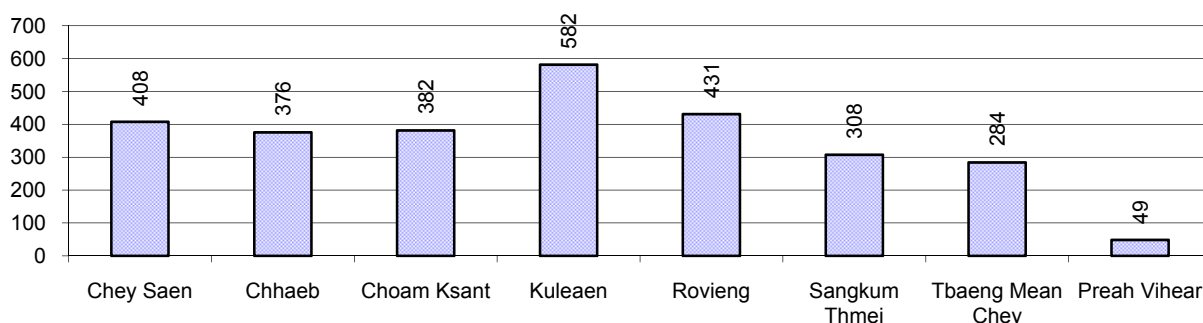
Description	2006	2007	2008
Maximum average farm gate price	531 Riels/Kg	729 Riels/Kg	817 Riels/Kg
Minimum average farm gate price	404 Riels/Kg	578 Riels/Kg	568 Riels/Kg
Average farm gate price	467 Riels/Kg	654 Riels/Kg	692 Riels/Kg
Average rice production per person	359 Kg/person	404 Kg/person	382 Kg/person

6.5.15 Minimum and maximum farm-gate Prices of Rice in Riel/kg, by District, in 2008



6.5.16 Production of Paddy in Kg/Person, by District, in 2008

This table shows how much paddy (harvested rice) is produced in a year in a district, in kg per person.

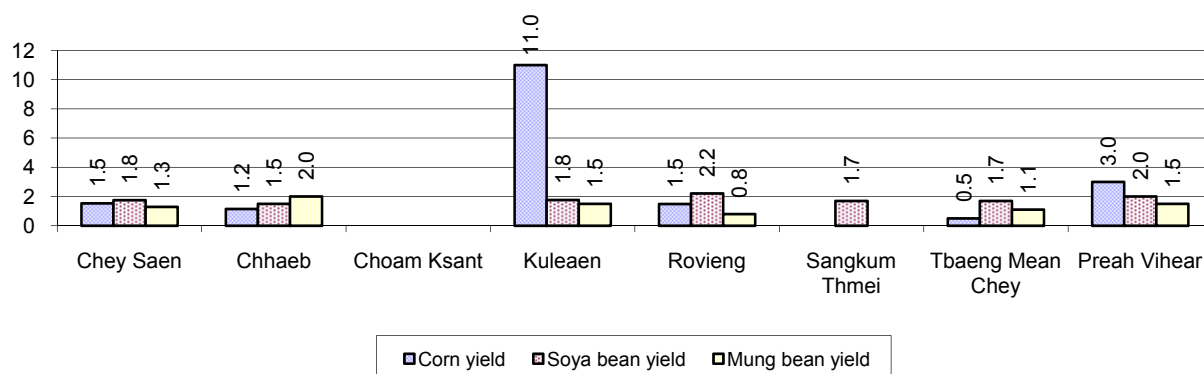


6.5.17 Production of other Crops, 2006-2008

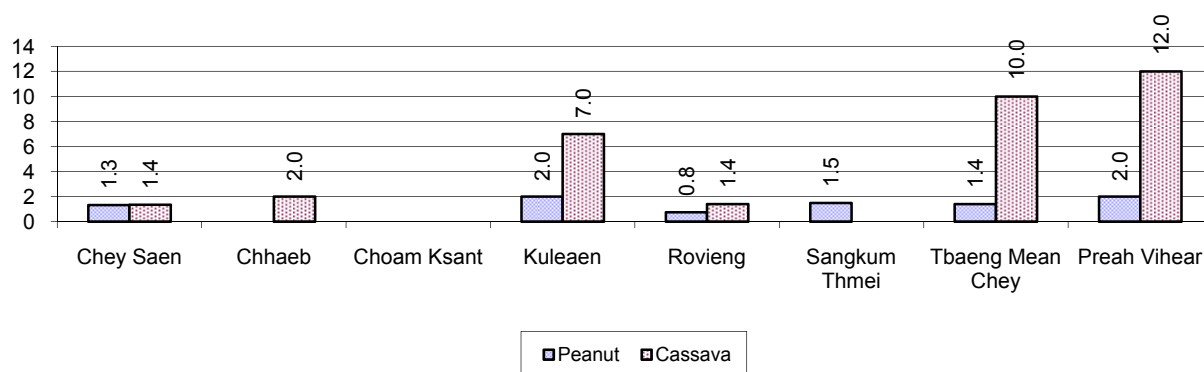
Crops	2006	2007	2008
Corn cultivation area	142 ha	252 ha	147 ha
Estimated corn yield	1.6 tonne(s)/ha	1.7 tonne(s)/ha	2.2 tonne(s)/ha
Estimated corn production	231 tonne(s)	420 tonne(s)	317 tonne(s)
Soya bean cultivation area	9,275 ha	6,942 ha	3,964 ha
Estimated Soya bean yield	1.5 tonne(s)/ha	1.5 tonne(s)/ha	1.9 tonne(s)/ha
Estimated Soya bean production	13,698 tonne(s)	10,683 tonne(s)	7,582 tonne(s)
Mungbean cultivation area	74 ha	365 ha	98 ha
Estimated Mungbean yield	0.9 tonne(s)/ha	1.1 tonne(s)/ha	1.1 tonne(s)/ha
Estimated Mungbean production	69 tonne(s)	415 tonne(s)	111 tonne(s)
Peanut cultivation area	492 ha	670 ha	394 ha
Estimated Peanut yield	0.9 tonne(s)/ha	1.2 tonne(s)/ha	1.3 tonne(s)/ha
Estimated Peanut production	447 tonne(s)	812 tonne(s)	494 tonne(s)
Cassava cultivation area	31 ha	155 ha	870 ha
Estimated Cassava yield	1.6 tonne(s)/ha	2.2 tonne(s)/ha	3.7 tonne(s)/ha
Estimated Cassava production	50 tonne(s)	336 tonne(s)	3,218 tonne(s)
Sweet potatoes cultivation area	25 ha	116 ha	362 ha
Estimated Sweet potatoes yield	1.4 tonne(s)/ha	1.1 tonne(s)/ha	1.4 tonne(s)/ha
Estimated Sweet potatoes production	34 tonne(s)	124 tonne(s)	499 tonne(s)

Crops	2006	2007	2008
Sesame cultivation area	3,067 ha	769 ha	365 ha
Estimated Sesame yield	0.8 tonne(s)/ha	0.7 tonne(s)/ha	1.0 tonne(s)/ha
Estimated Sesame production	2,366 tonne(s)	545 tonne(s)	346 tonne(s)

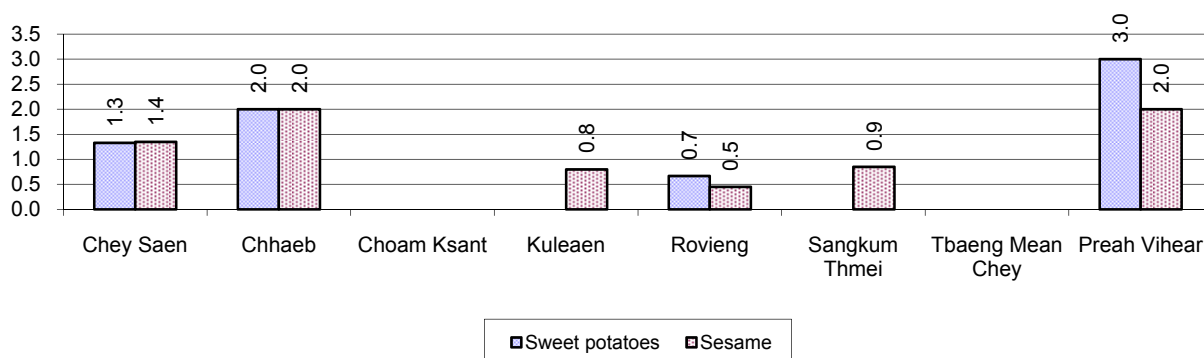
6.5.18 Yields of Corn, Soya beans and Mungbeans in tonne(s)/ha, by District, in 2008



6.5.19 Yields of Peanuts and Cassava in tonne(s)/ha by District, in 2008



6.5.20 Yields of Sweet Potatoes and Sesame in tonne(s)/ha, by District, in 2008



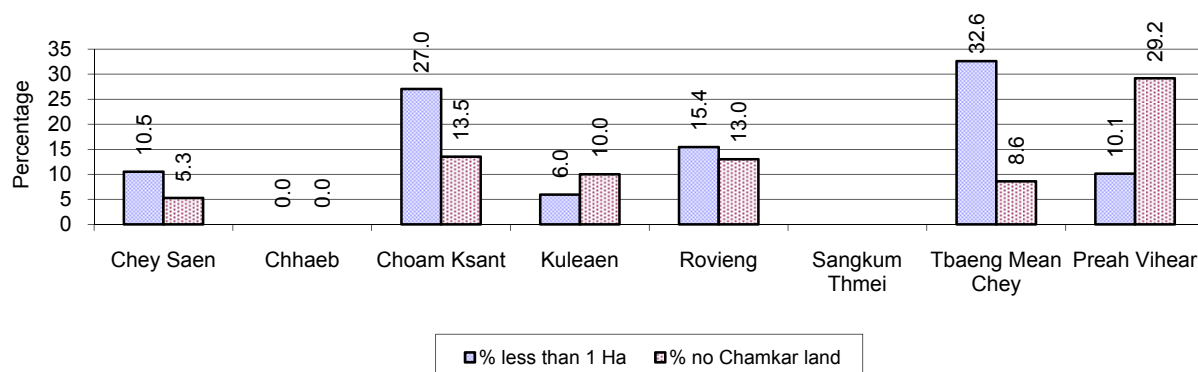
6.5.21 Percentage Farmers who own less than 1 Ha or no Chamkar land

Description	2006 %	2007 %	2008	
			%	Number
Families, who own less than 1ha of Chamkar land	16%	23%	12%	245 families
Families, with no Chamkar land	31%	25%	19%	387 families

Note 1: Calculated as a percentage of the total number of families whose main occupation is Chamkar (not rice) farming

Note 2: Chamkar land is no-rice land, i.e. other crops

6.5.22 Percentage Farmers owning less than 1 ha or no Chamkar land, by District, in 2008



Note: Percentage is calculated among families, who Chamkar farm as a main occupation, not the total population of the district.

6.5.23 Percentage of Families raising Cattle/Buffalo, 2006-2008

Description	2006	2007	2008	
	%	%	%	Number
Families raising cattle/buffalo	66%	66%	66%	23,215 families
Families raising cattle/buffalo as labor forces	55%	54%	52%	18,301 families

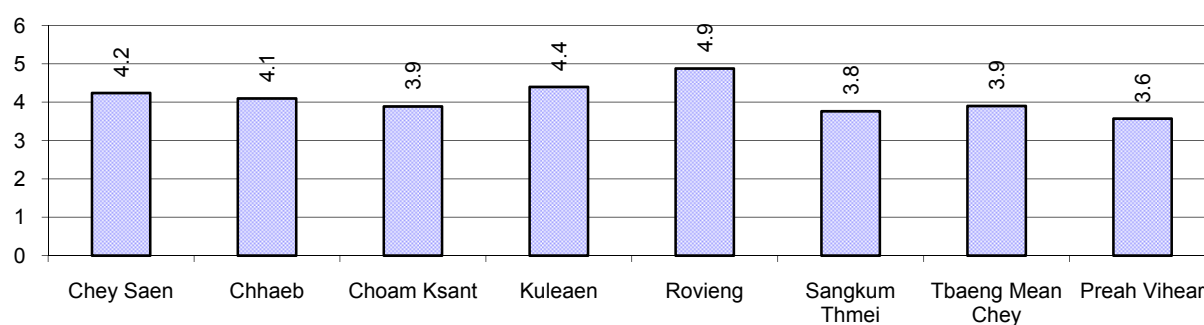
Note: Calculated against the total number of families.

6.5.24 Number of Cattle/buffalo being raised, 2006-2008

Description	2006	2007	2008
Total number of cattle/buffalo	87,660 head(s)	94,527 head(s)	98,645 head(s)
Average cattle/buffalo per families	4.2 head(s)/families	4.3 head(s)/families	4 head(s)/families

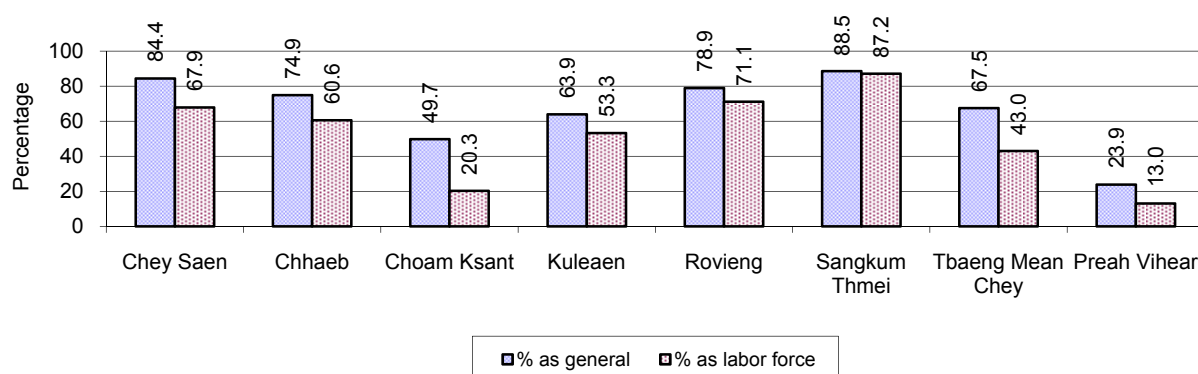
Note: Calculated by dividing total number of cattle/buffalo by total number of cattle/buffalo raising families

6.5.25 Average number of Cattle/Buffalo per Family, by District, in 2008



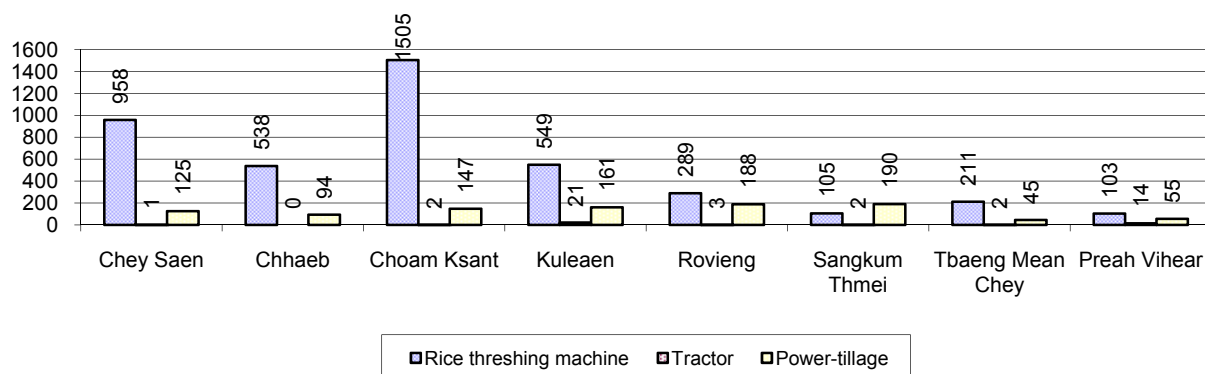
Note: Calculated by dividing total number of cattle/buffalo by total number of cattle/buffalo raising families

6.5.26 Percentage Families raising Cattle/Buffalo, for general and labor purposes in 2008, by Commune



Note: Calculated using the total number of families raising cattle/buffalo against the total number of families.

6.5.27 Type and number of agricultural Machines, by District, in 2008

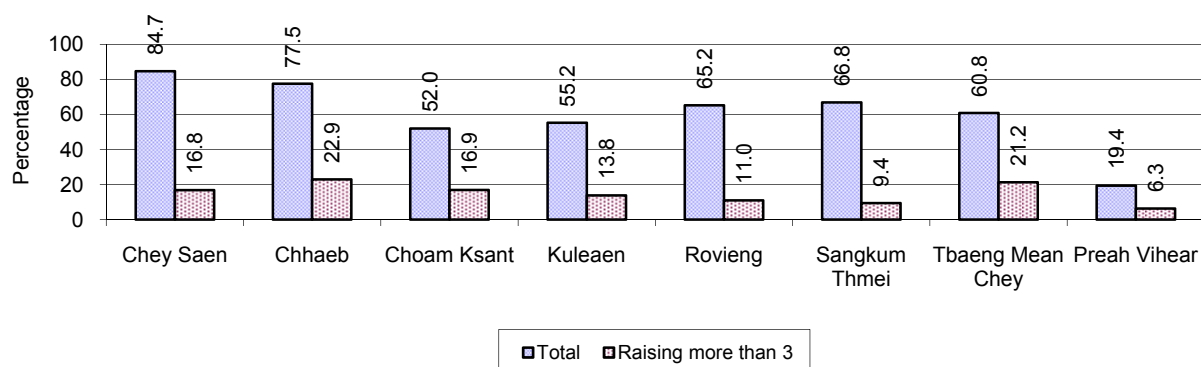


6.5.28 Livestock-producing Households, 2006-2008

Description	2006 %	2007 %	2008	
			%	Number
Total number of families raising pigs	58%	56%	60%	20,928 families
number of families raising more than 3 pigs	13%	13%	14%	4,929 families
Total number of families raising chickens	77%	77%	78%	27,333 families
number of families raising more than 3 chickens	56%	54%	60%	20,956 families
Total number of families raising ducks	11%	10%	11%	3,910 families
number of families raising more than 5 ducks	7%	5%	6%	2,215 families
Total number of families raising goats or sheep	0%	0%	0%	15 families
Total number of families raising horses	0%	0%	0%	2 families

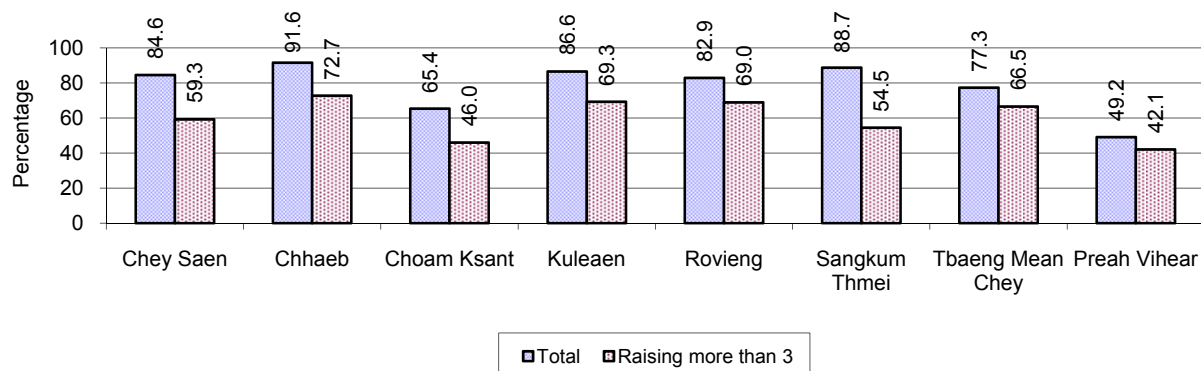
Note: Calculated against the total number of families

6.5.29 Percentage Families raising Pigs, by District, in 2008



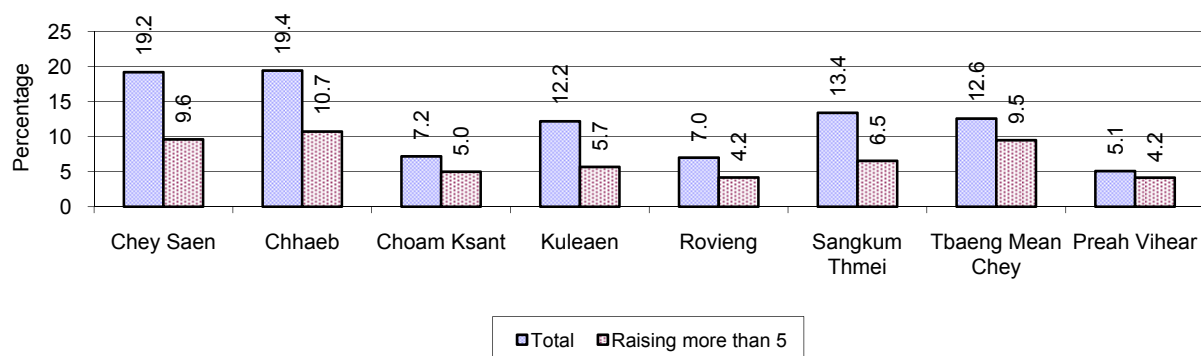
Note: Calculated against the total number of families in the district

6.5.30 Percentage Families raising Chickens, by District, in 2008



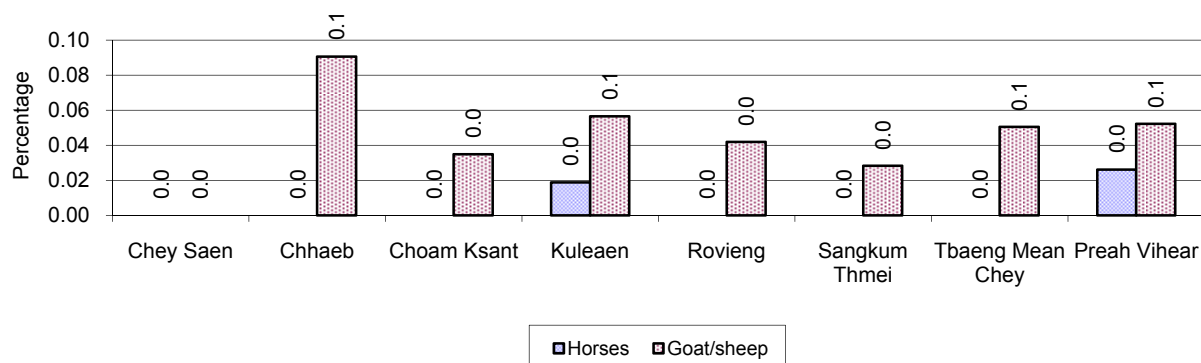
Note: Calculated against the total number of families in the district

6.5.31 Percentage Families raising Ducks, by District, in 2008



Note: Calculated against the total number of families in the district

6.5.32 Percentage Families raising Horses, Goats or Sheep, by District, in 2008

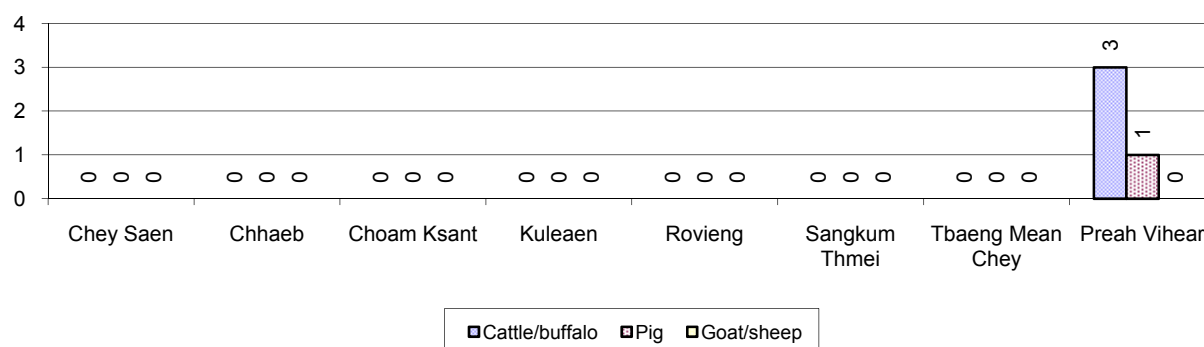


Note: Calculated against the total number of families in the district

6.5.33 Livestock Farms, 2006-2008

Description	2006	2007	2008
Number of cattle/buffalo farms	0 farm(s)	0 farm(s)	3 farm(s)
Number of pig farms	0 farm(s)	2 farm(s)	1 farm(s)
Number of goat/sheep farms	0 farm(s)	1 farm(s)	0 farm(s)
Number of chicken farms	0 farm(s)	0 farm(s)	0 farm(s)
Number of duck farms	0 farm(s)	2 farm(s)	0 farm(s)

6.5.34 Number Livestock Farms, by District in 2008



Note: Number of farms are recorded by the village chief, not by counting number of livestock in each farm

6.5.35 Number Chicken and Duck Farms, by District, for 2008

There were no chicken and duck farms in this province in 2008

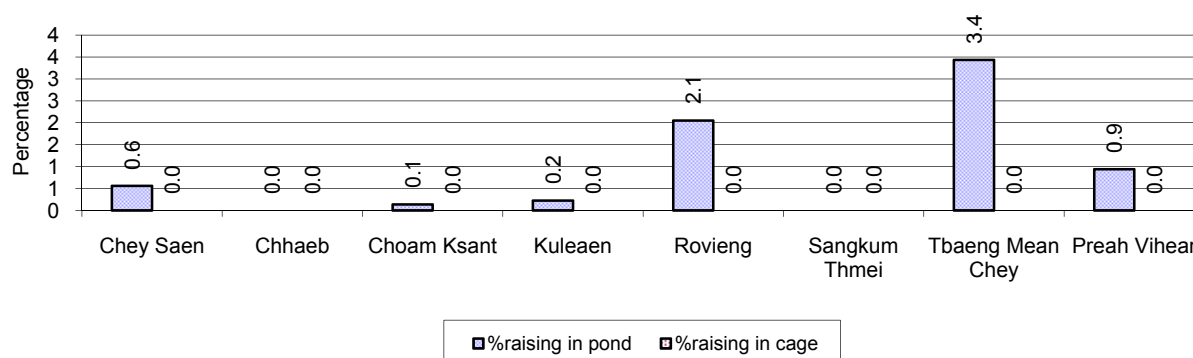
Note: Number of farm places recorded by village chief, not by counting number of livestock in each farm

6.5.36 Families raising Fish, 2006-2008

Description	2006	2007	2008
Total number of families raising fish	211 families	245 families	294 families
% families raising fish	1%	1%	1%
Number families raising fish in pond	211 families	245 families	294 families
% families raising fish in pond	1%	1 %	1%
Number fish pond	211 pond(s)	305 pond(s)	346 pond(s)
No. of ponds per family	1.0 pond/families	1.2 pond/families	1.2 pond/families
Number of families raising fish in cage	0 families	0 families	0 families
%families raising fish in cage	0 %	0 %	0%
Number of fish cage	0 cage(s)	0 cage(s)	0 cage(s)
No. of fish cage per family	- cage /families	- cage /families	- cage /families

Note: % of families raising fish or fish in ponds or cages is calculated as a percentage of the total number of families.

6.5.37 Percentage of Families raising Fish, by District, in 2008



Note: Calculated as a percentage of the total number of families in the commune.

6.5.38 Shrimp and Prawn Farming, 2006-2008

Description	2006	2007	2008
Number of families raising shrimps	0 families	0 families	0 families
% Families raising shrimps	0%	0%	0%
Number of shrimp ponds	0 pond	0 pond	0 pond
Total area raising shrimps	0 ha	0 ha	0 ha
Area per family	-ha/families	-ha/families	-ha/families
Number of families raising prawns	0 families	0 families	0 families
% families raising prawns	0%	0%	0%
Number prawn ponds	0 pond	0 pond	0 pond
Ponds per families	- pond/families	-pond/families	-pond/families
Number of prawn cages	0 cage	0 cage	0 cage
Cages per families	0 cage /families	0 cage /families	0 cage /families

Note: Percentage of families raising either prawns or shrimp is calculated against the number of families, who do aquaculture farming, NOT the total population.

6.5.39 Numbers of Families raising Shrimps and number of Shrimp Ponds, by District, in 2008

There were no families raising shrimps in this province in 2008

6.5.40 Number of Families raising Prawn and Number of Prawn Ponds/Cages, by District, in 2008

There were no families raising prawn in this province in 2008

7 Social Aspects

7.1 Education

7.1.1 Kindergarten in the Province, 2006-2008

Description	2006	2007	2008
Number of community kindergarten schools	2 school(s)	2 school(s)	7 school(s)
Number of community kindergarten class rooms	5 room(s)	3 room(s)	11 room(s)
Number of community kindergarten classes	3 class(es)	6 class(es)	9 class(es)
Number of community kindergarten teachers	3 person(s)	7 person(s)	9 person(s)
Number of women community kindergarten teachers	3 women	4 women	9 women
Number of state and private kindergarten schools	10 school(s)	9 school(s)	13 school(s)
Number of state and private kindergarten class rooms	15 room(s)	10 room(s)	17 room(s)
Number of state and private kindergarten classes	17 class(es)	15 class(es)	21 class(es)
Number of state and private kindergarten teachers	20 person(s)	22 person(s)	26 person(s)
Number of women state and private kindergarten teachers	20 women	22 women	25 women

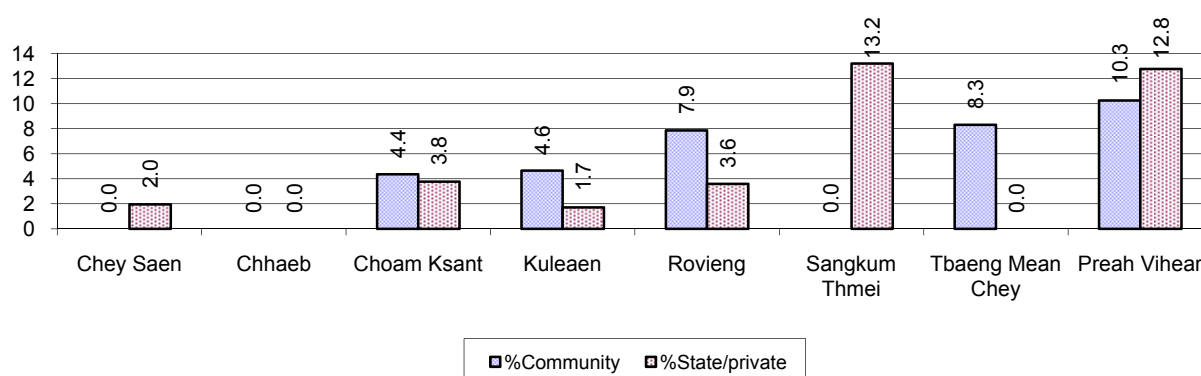
7.1.2 Percentage enrolment at Kindergarten level, 2006-2008

This table shows the percentage of the total 3-5 year old population attending kindergarten.

Description	2006 %	2007 %	2008	
			%	Number
Total percentage of children, 3-5 yrs, go to kindergarten	6%	7%	9%	1,511 person(s)
Percentage of children, 3-5 yrs, go community kindergarten	1%	4%	5%	798 person(s)
Percentage children, 3-5 yrs, go state/private kindergarten	4%	4%	4%	713 person(s)

Note: Calculated against the total for that age group

7.1.3 Percentage of Children 3-5 yrs attending Kindergarten, by District, in 2008



7.1.4 Basic Education, 2006-2008

Primary School

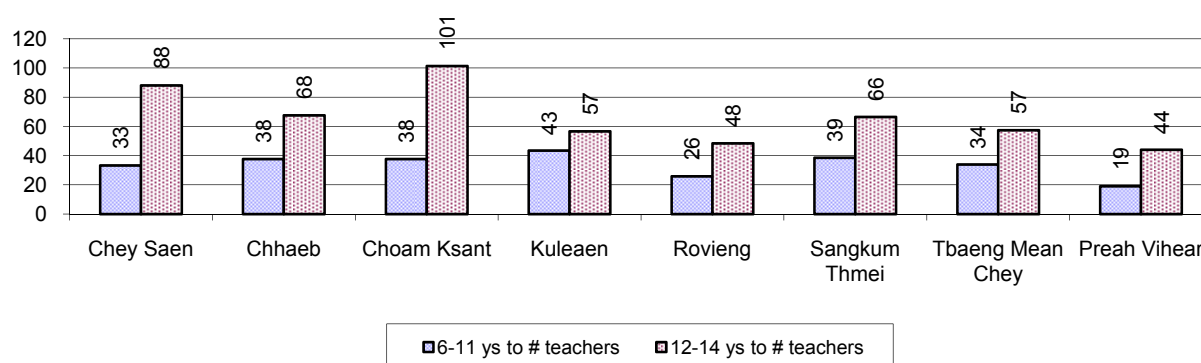
Description	2006	2007	2008
Number of primary schools	159 school(s)	181 school(s)	201 school(s)
Number of primary school rooms	608 room(s)	705 room(s)	759 room(s)
Number of primary classes	1,014 class(es)	962 class(es)	1,011 class(es)
Number of primary teachers	681 person(s)	792 person(s)	816 person(s)
Ratio of children 6-11 yrs to school	154	141	130
Ratio of children 6-11 yrs to school room	40	36	34
Ratio of children 6-11 yrs to class	24	27	26
Ratio of children 6-11 yrs to teacher	36	32	32

Note: According to education norm, children 6-11 yrs should attend primary school, while 12-14 yrs should be in lower secondary school, but in reality this varies.

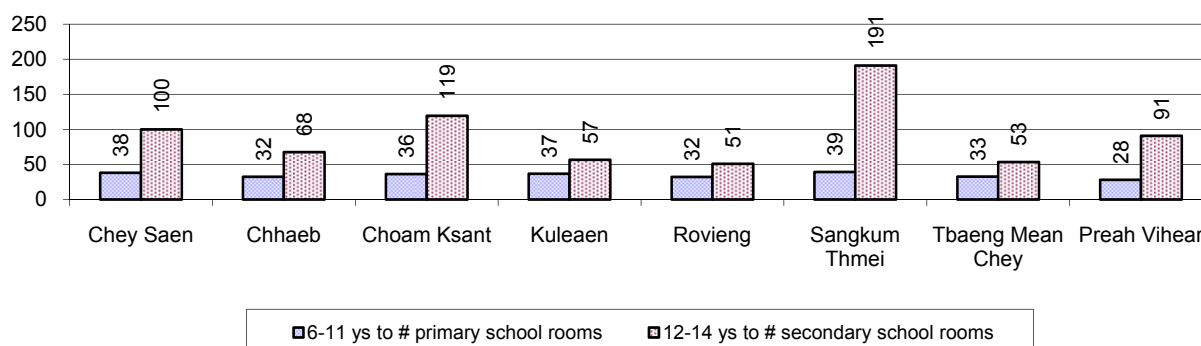
Lower Secondary School

Description	2006	2007	2008
Number of lower secondary schools	23 school(s)	27 school(s)	35 school(s)
Number of lower secondary school rooms	125 room(s)	145 room(s)	182 room(s)
Number of lower secondary classes	122 class(es)	127 class(es)	139 class(es)
Number of lower secondary teachers	135 person(s)	176 person(s)	221 person(s)
Ratio children 12-14 yrs to school	535	475	386
Ratio of children 12-14 yrs to school room	98	88	74
Ratio of children 12-14 yrs to class	101	101	97
Ratio of children 12-14 yrs to teacher	91	73	61

7.1.5 Ratio of 6-11 year old and 12-14 year old Children to number of Teachers, by District, in 2008



7.1.6 Ratio of 6-11 year old and 12-14 year old Children to number of School Rooms, by District, in 2008



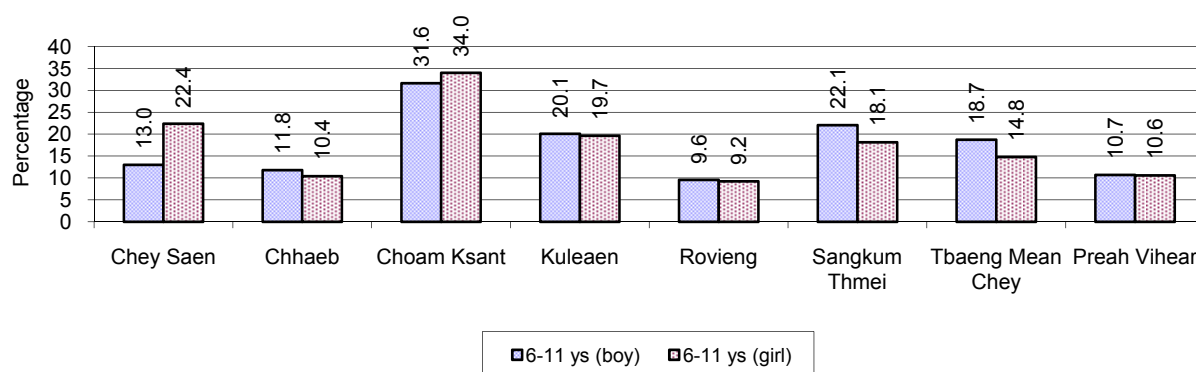
7.1.7 Enrolment status at Primary Level, 2006-2008 one decimal only

Description	2006 %	2007 %	2008	
			%	Number
Total children aged 6-11 years old	16%	16%	16%	26,039 person(s)
Total children aged 6-11 who are in school	82%	82%	83%	21,524 person(s)
Total children aged 6-11 who are not in school	18%	18%	17%	4,515 person(s)
Total girls aged 6-11 years old	16%	16%	15%	12,917 person(s)
Total girls aged 6-11 who are in school	81%	80%	82%	10,619 person(s)
Total girls aged 6-11 who are not in school	19%	20%	18%	2,298 person(s)
Total boys aged 6-11 years old	17%	17%	16%	13,122 person(s)
Total boys aged 6-11 who are in school	83%	84%	83%	10,905 person(s)
Total boys aged 6-11 who are not in school	17%	16%	17%	2,217 person(s)

Note 1: Percentage is calculated on the basis of the total number of children within 6-11 year age group for the first 3 rows and for the total girls and the total boys aged 6-11 yrs.

Note 2: Number of girls aged 6-11 who are in & not in school is calculated against the total number of girls aged 6-11 yrs. Number boys, 6-11 yrs who are in & not in school are calculated against the total number of boys aged 6-11 yrs.

7.1.8 Percentage of 6-11 year old Children not in School, by District, in 2008



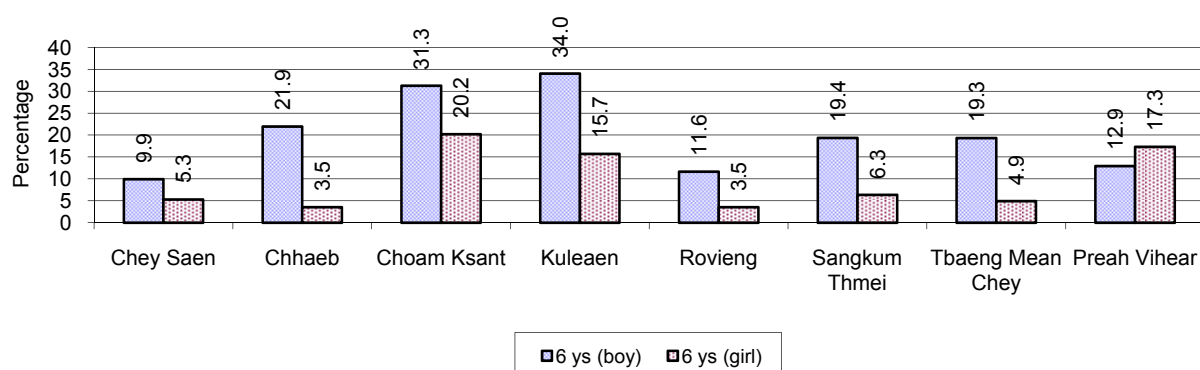
Note: calculated on the basis of the total number of children within 6-11 year age group in the commune.

7.1.9 Enrolment of 6 year old Children, 2006-2008

Description	2006 %	2007 %	2008	
			%	Number
Total % and number of children aged 6 years old	5%	5%	4%	7,489 person(s)
Total % of children aged 6 years old in school	73%	77%	78%	5,864 person(s)
Total % of children aged 6 years old not in school	27%	23%	22%	1,625 person(s)

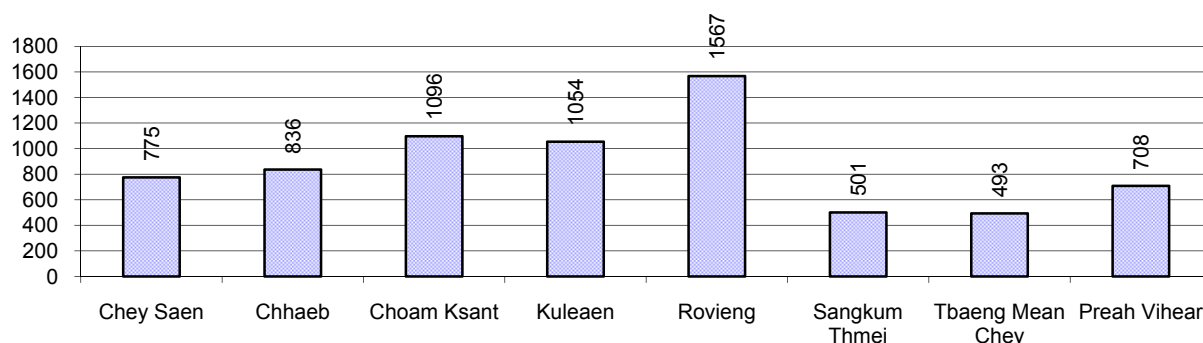
Note: First row calculated as a percentage of total population. Second and third row calculated as a percentage of the total number of 6 year olds.

7.1.10 Percentage of 6 year old Children not in School, by District, in 2008



Note: Calculated as a percentage of total 6 year old population

7.1.11 Number of 5 year old Children in each District in 2008

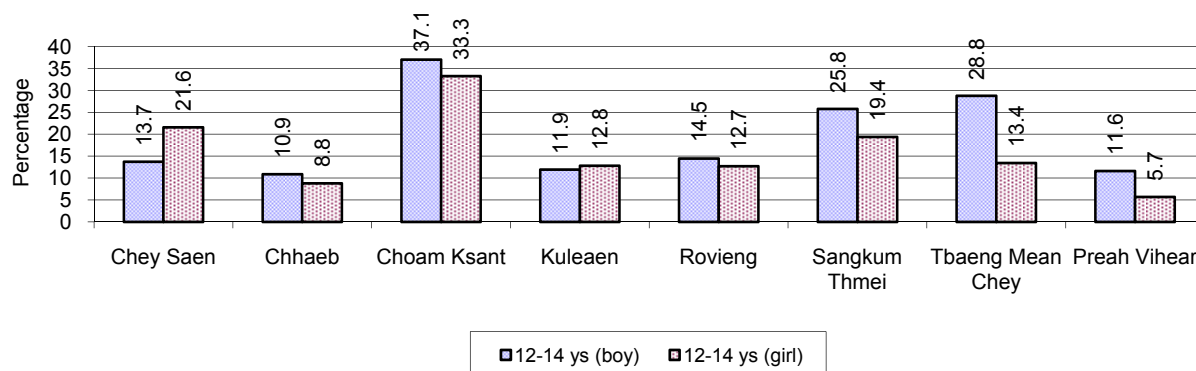


7.1.12 Enrolment at Lower Secondary Level, 2006-2008

Description	2006	2007	2008	
	%	%	%	Number
Total children aged 12-14 years old	8%	8%	8%	13,497 person(s)
Children aged 12-14 years old in school	85%	83%	82%	11,114 person(s)
Children aged 12-14 years old not in school	15%	17%	18%	2,383 person(s)
Total girls aged 12-14 years old	8%	8%	8%	6,653 person(s)
Girls aged 12-14 years old in school	85%	82%	83%	5,554 person(s)
Girls aged 12-14 years old not in school	15%	18%	17%	1,099 person(s)
Total boys aged 12-14 years old	8%	8%	8%	6,844 person(s)
Boys aged 12-14 years old in school	85%	83%	81%	5,560 person(s)
Boys aged 12-14 years old not in school	15%	17%	19%	1,284 person(s)

Note: Percentage is calculated on the basis of number of the total number of children within 12-14 yrs group, except for the first row of each section which is calculated on the basis of the total population.

7.1.13 Percentage of 12-14 year olds not in School, by District, in 2008



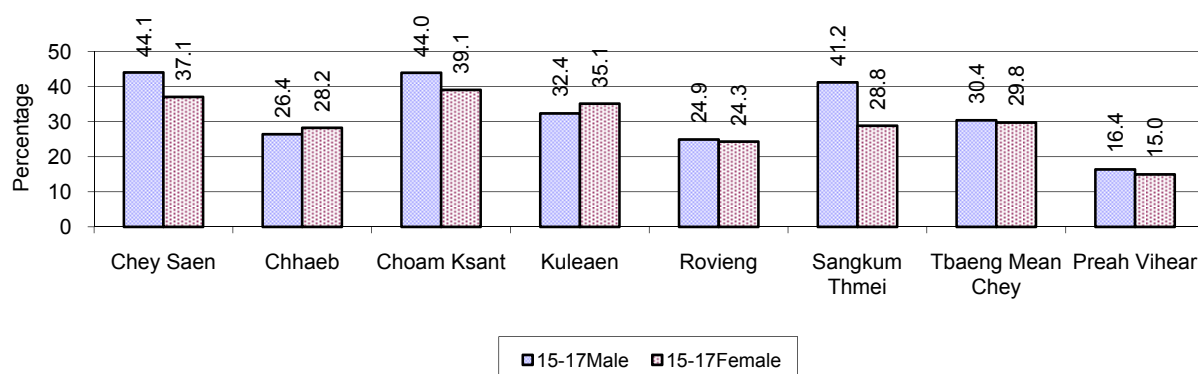
Note: Calculated as a percentage of the total 12-14 year old population in each district

7.1.14 Upper Secondary Schools, 2006-2008

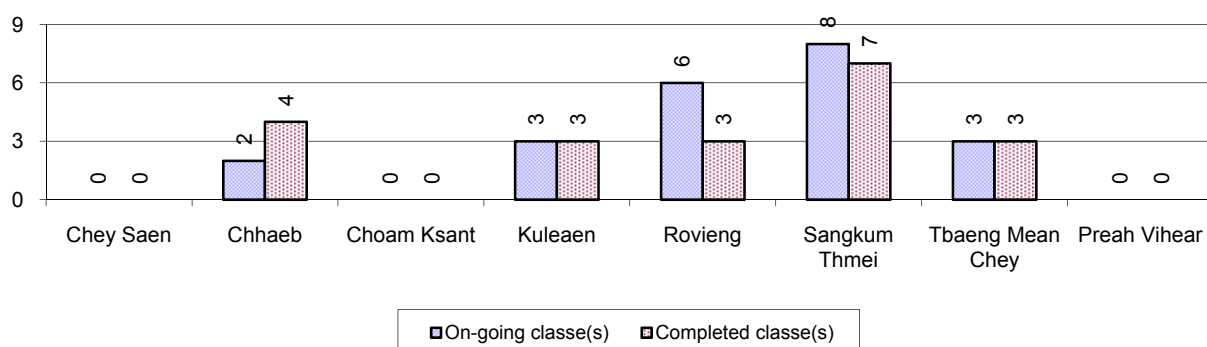
Description	2006	2007	2008
Number of upper secondary schools	4 school(s)	3 school(s)	9 school(s)
Number of upper secondary school rooms	41 room(s)	36 room(s)	52 room(s)
Number of upper secondary classes	33 class(es)	48 class(es)	69 class(es)
Number of upper secondary teachers	70 person(s)	86 person(s)	92 person(s)
Ratio of 15-17 yr olds to number of school	2,837	4,033	1,459
Ratio of 15-17 yr olds to number of school room	277	336	253
Ratio of 15-17 yr olds to number of classes	344	252	190
Ratio of 15-17 yr olds to number of teacher	162	141	143

7.1.15 Enrolment of 15-17 year old teenagers, 2006-2008

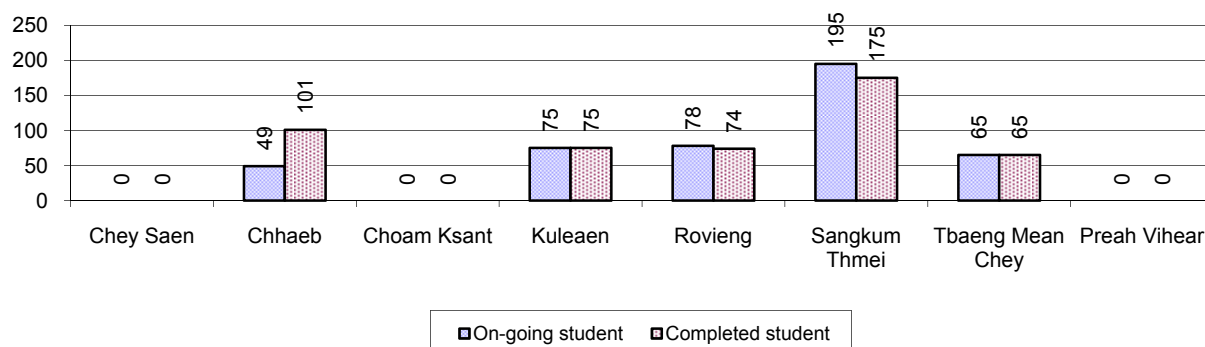
Description	2006	2007	2008
Number of teenage, 15-17 years old	11,347 person(s)	12,100 person(s)	13,135 person(s)
Number of teenage, 15-17 years old, who are not studying	3,908 person(s)	3,609 person(s)	4,085 person(s)
Percentage of teenage, 15-17 years old not studying	34%	30%	31%

7.1.16 Percentage of 15-17 year old Teenagers not at School, by District, in 2008**7.1.17 Literacy Classes as of 2008**

Literacy classes	Organized by:		Other Program(s)	Total
	PDoEYS	NGOs		
Number of On-going literacy classes	19 class(es)	2 class(es)	1 class(es)	22 class(e(s)
Number of literacy students in on-going classes	387 person(s)	50 person(s)	25 person(s)	462 person(s)
Completed literacy class(es)	18 classes	2 classes	0 classes	20 classes
Number of literacy students that have completed literacy classes	440 person(s)	50 person(s)	0 person(s)	490 person(s)
Number of students that passed	389 person(s)	46 person(s)	0 person(s)	435 person(s)

7.1.18 Number of on-going and completed Literacy Classes, by District, in 2008

7.1.19 Students of on-going & completed Literacy Classes, by District, in 2008

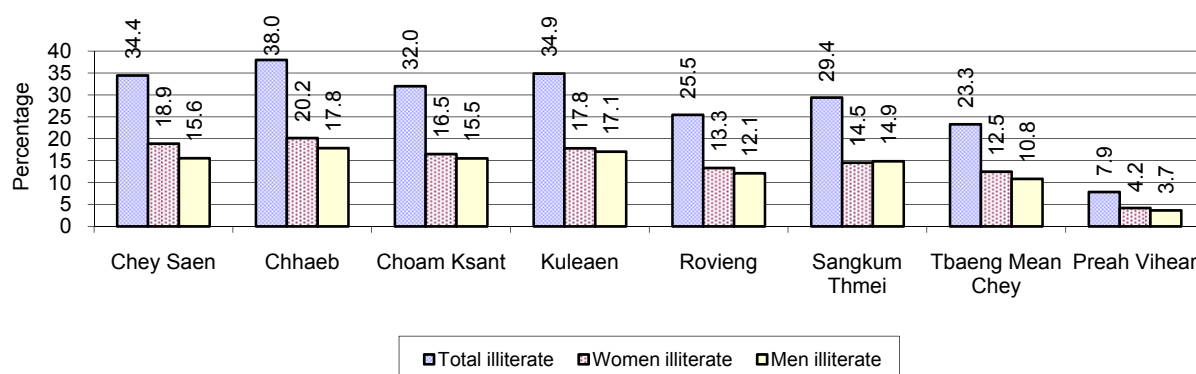


7.1.20 Percentage of illiterate People between 15-60, 2006-2008

Illiteracy Status	2006 %	2007 %	2008	
			%	Number
Illiterate people, 15-60 years old	32%	31%	28%	26,037 person(s)
Illiterate females, 15-60 years old	17%	17%	15%	13,579 person(s)
Illiterate people, 15-17 years old	19%	17%	16%	2,043 person(s)
Illiterate females, 15-17 years old	9%	8%	7%	921 person(s)
Illiterate people, 18-24 years old	29%	29%	26%	5,262 person(s)
Illiterate females, 18-24 years old	15%	15%	13%	2,707 person(s)
Illiterate people, 25-60 years old	35%	34%	32%	18,732 person(s)
Illiterate females, 25-60 years old	20%	19%	17%	9,951 person(s)

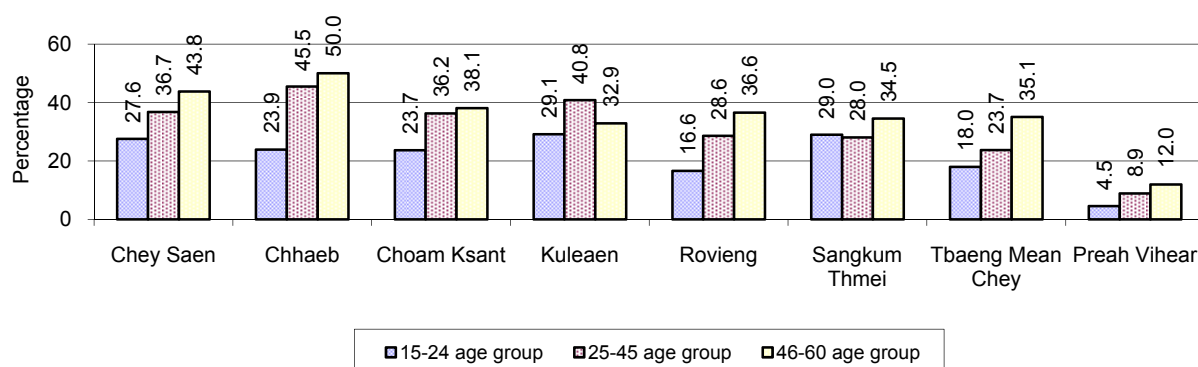
Note: Percentage is calculated on the basis of number of people in age group.

7.1.21 Percentage illiterate People among 15-60 yrs old, by District, in 2008



Note: Percentages are calculated on the basis of number of people in that age group.

7.1.22 Percentage illiterate People for 15-24 yrs, 25-45 yrs and 46-60 yrs, by District, in 2008



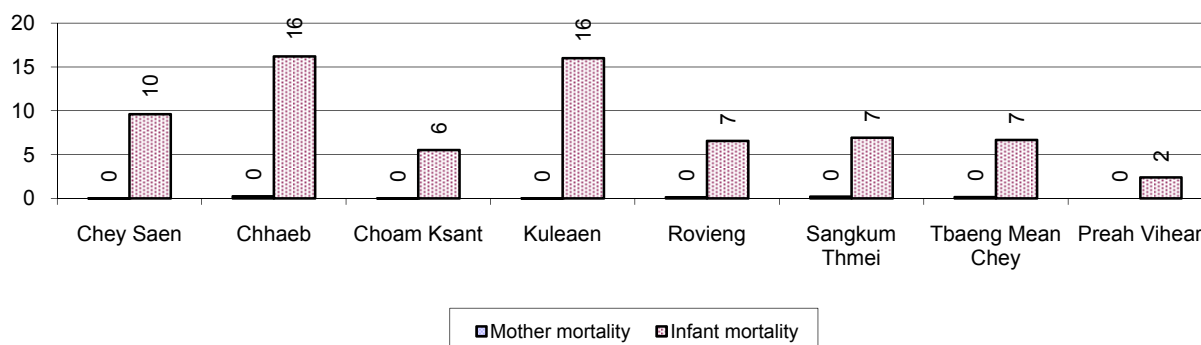
Note: Percentage of illiterate people in each age group is calculated on the basis of number of people in that age group.

7.2 Health

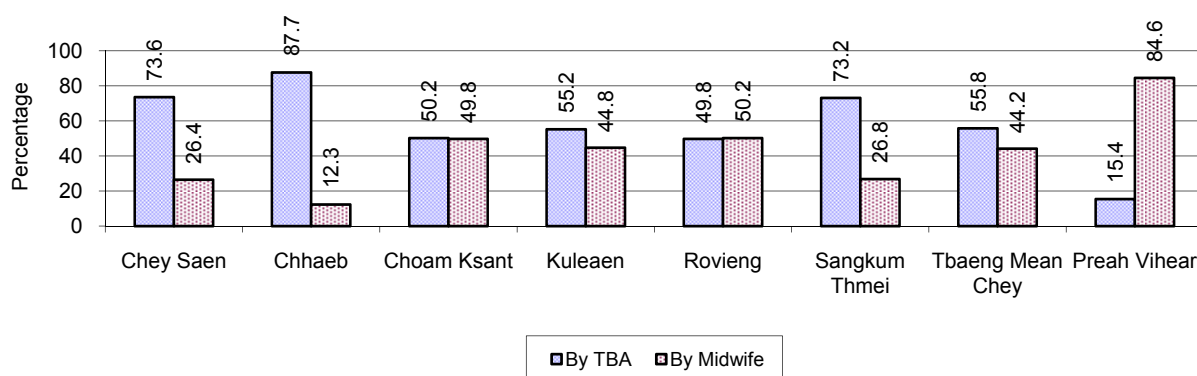
7.2.1 Health Situation of Women and Children, 2006-2008

Description	2006	2007	2008
Number families with a birth during the year	3,443 families	3,428 families	3,445 families
Number of women who had their baby delivered by a Traditional Birth Attendant	2,630 person(s)	2,268 person(s)	2,022 person(s)
Percentage of women who had their baby delivered by a Traditional Birth Attendant	76 %	66 %	59 %
Number of women who had their baby delivered by a midwife	813 person(s)	1,160 person(s)	1,423 person(s)
Percentage of women had their baby delivered by a midwife	24 %	34 %	41 %
Number of mothers who died within 1 month of giving birth	40 person(s)	37 person(s)	21 person(s)
Mothers who died within 1 month of giving birth per 100,000 families having a delivery	1,162	1,079	610
Number of infants born during the year	3,176 person(s)	3,435 person(s)	3,453 person(s)
Number of Infants who died within 1 month	267 person(s)	210 person(s)	172 person(s)
Infants mortality within 1 month per 1,000 births	84	61	50
Number of children who died below the age of 5.	255 person(s)	202 person(s)	182 person(s)
Number of infants, aged 9-12 months, born during the year	1,924 person(s)	2,143 person(s)	1,947 person(s)
Nr. infants, aged 9-12 months, not receiving full immunization	167 person(s)	103 person(s)	126 person(s)
% of 9-12 months infants, not receiving full immunization	9 %	5 %	6 %

7.2.2 Mothers dying within 0 days to 1 month of giving Birth and Infants dying within 1 month in 2008, by District in 2008

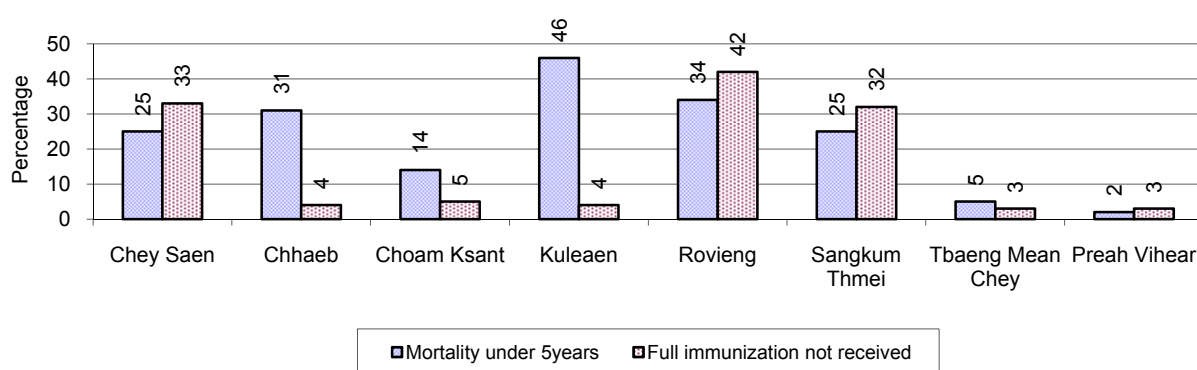


7.2.3 Percentage of Women delivering with a TBA or Midwife, by District in 2008



Note: Calculated as a percentage of total deliveries

7.2.4 Percentage of Children dying below 5 & of 9-12 months not receiving full Immunization, by District in 2008



Note: Mortality rate calculated as a percentage of the total 5 year old population. Lack of immunization received calculated as a percentage of the total number 9-12 months olds.

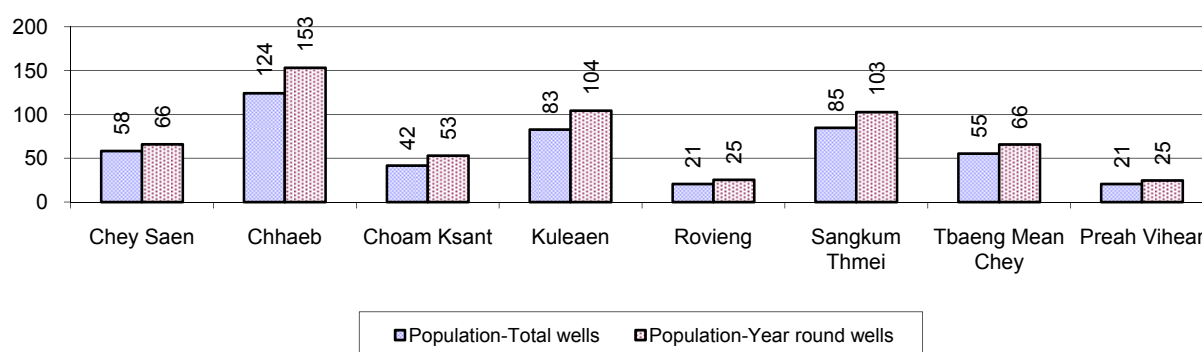
7.3 Water and Sanitation

7.3.1 Number of different types of Wells, 2006-2008

Type of wells	Number of wells by year		
	2006	2007	2008
<i>Total number of pumped or mixed wells</i>	1,824	2,625	2,801
Year-round usable pumped or mixed wells	1,441	2,078	2,273
Dry season unusable pump or mixed wells	383	547	528
Pump or mixed wells needing repair/rehabilitation	352	479	453
<i>Total number of ring wells</i>	947	1,529	1,542
Year-round usable ring wells	697	1,243	1,289
Dry season unusable ring wells	250	286	253
Ring wells needing repair/rehabilitation	171	192	216
<i>Total number of unprotected dug wells</i>	537	529	838
Year-round usable unprotected dug wells	318	307	470
Dry season unusable unprotected dug wells	219	222	368

Ring wells: dug wells with cement ring as lining

7.3.2 Ratio of People to Wells, by District in 2008

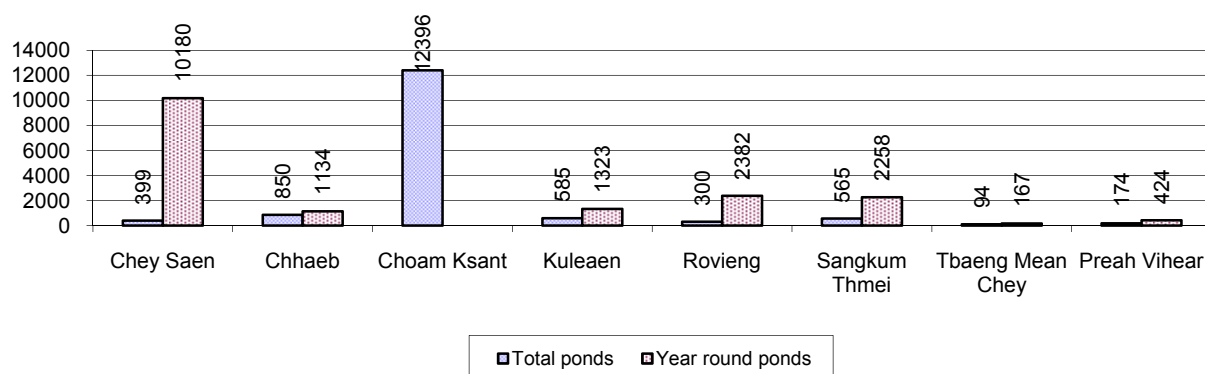


Note: Year-round wells excluding unprotected wells

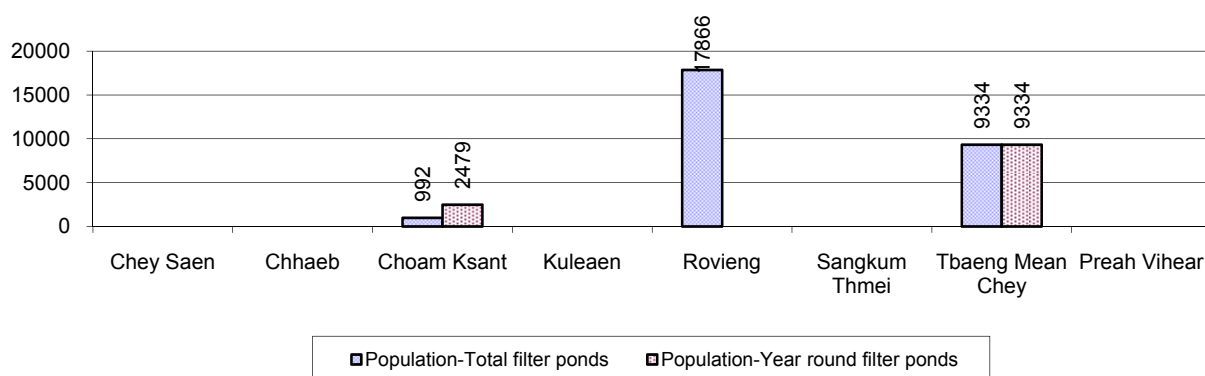
7.3.3 Potable Water Ponds, 2006-2008

Type of Pond	2006	2007	2008
<i>Total number of normal-type ponds</i>	407 pond	359 pond	466 pond
Year-round usable normal-type ponds	108 pond	114 pond	156 pond
Dry season unusable normal-type ponds	299 pond	245 pond	310 pond
Normal-type ponds needing repair/rehabilitation	229 pond	196 pond	207 pond
<i>Total number of filter ponds</i>	14 pond	47 pond	28 pond
Year-round usable filter ponds	6 pond	15 pond	11 pond
Filter ponds, dry season unusable	8 pond	32 pond	17 pond
Filter ponds needing repair/rehabilitate	9 pond	28 pond	39 pond

7.3.4 Ratio of People to normal Ponds, by District in 2008



7.3.5 Ratio of People to Filter Ponds, by District, in 2008

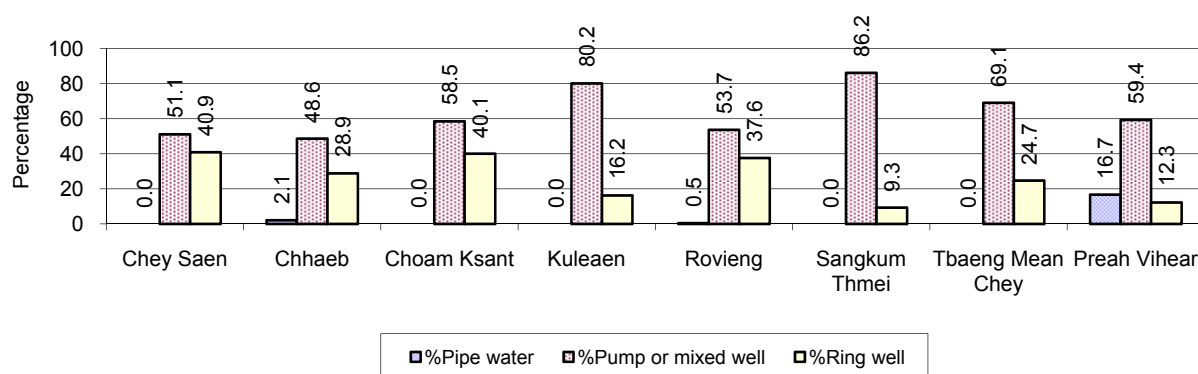


7.3.6 Source of potable Water for Households, 2006-2008

Water sources	2006	2007	2008	
	%	%	%	Number
Families using water from purification system	0%	2 %	2 %	743 families
Families using water from pump, mixed wells	67%	64 %	63 %	21,852 families
Families using water from ring wells and open dug wells	24%	28 %	28 %	9,774 families
Families using water from pond	1%	1 %	1 %	496 families
Families using water from rain water storage	1%	1 %	1 %	332 families
Families using water from rivers, lakes, natural ponds and reservoirs	7%	5 %	5 %	1,766 families

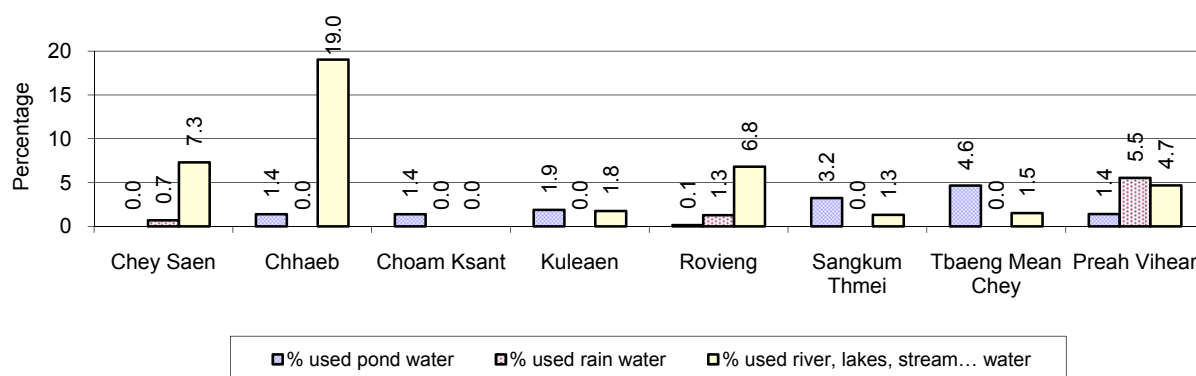
Note: Calculated as a percentage of the total number of families.

7.3.7 Percentage Families using different Water Sources, by District in 2008



Note: Calculated as a percentage of the total number of families in each district

7.3.8 Percentage Families using Water from Rain Water Storage, Ponds and natural Sources (rivers/lakes/natural ponds/reservoirs), by District 2008



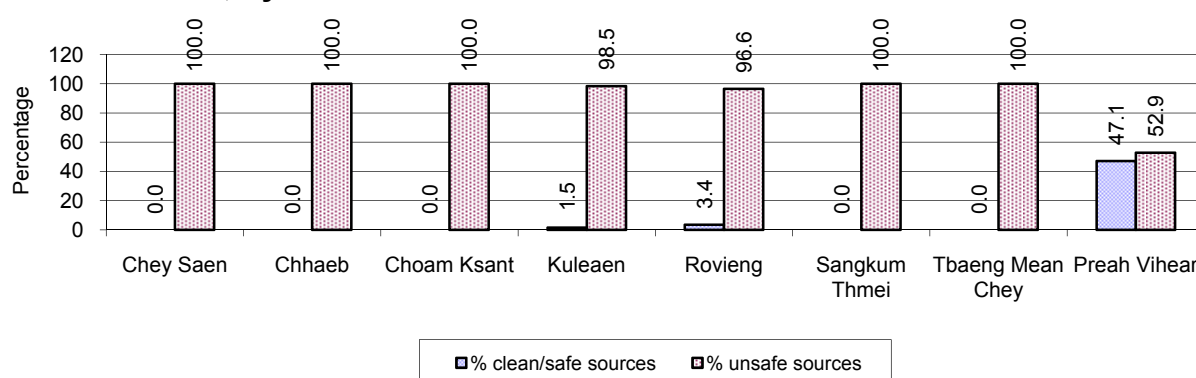
Note: Calculated as a percentage of the total number of families in each district

7.3.9 Drinking Water Sources in the dry Season, 2006-2008

Percentage Families that get drinking water from:	2006	2007	2008	
	%	%	%	Number
from clean/safe sources	47 %	27 %	6 %	2,133 families
from unsafe sources	53 %	73 %	94 %	32,830 families

Note: Calculated as a percentage of the total number of families.

7.3.10 Percentage Families using safe and unsafe Water Sources in the dry Season, by District in 2008



Note: Calculated as a percentage of the total number of families in each district.

7.3.11 Drinking Water Purification by Households, 2006-2008

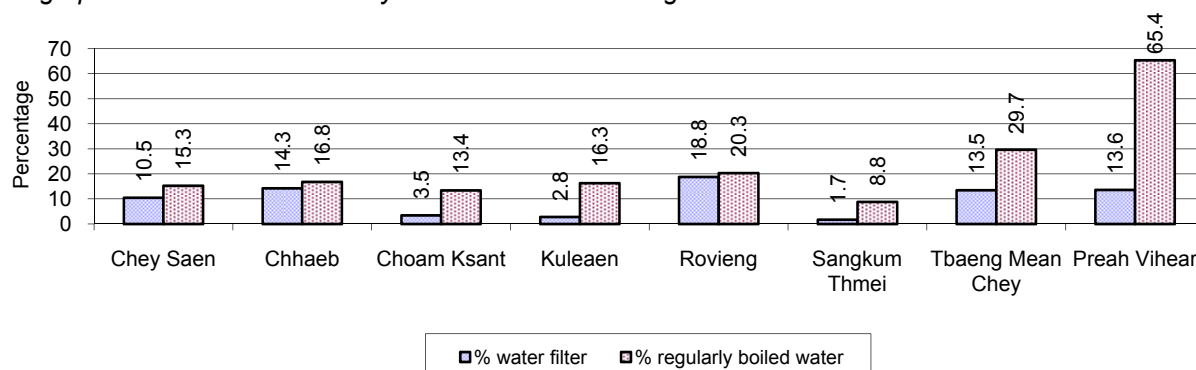
This table shows the different ways families make water safe for drinking.

Families, who:	2006	2007	2008	
	%	%	%	Number
Filter water for drinking	4%	8%	10 %	3,443 families
Boil water for drinking	22%	23%	22 %	7,676 families

Note: Calculated as a percentage of the total number of families

7.3.12 Percentage Families filtering Water or regularly boiling Water, by District in 2008

This graph shows the different ways families make drinking water safe.



Note: Calculated on as a percentage of the total number of families in each district.

7.3.13 Families' access to Water, 2006-2008

Families access to water	2006	2007	2008	
	%	%	%	Number
Families with water at home or in less then 150m	70%	34%	60 %	21,003 families
Families with water 150m or more away from home	29%	16%	30 %	10,328 families

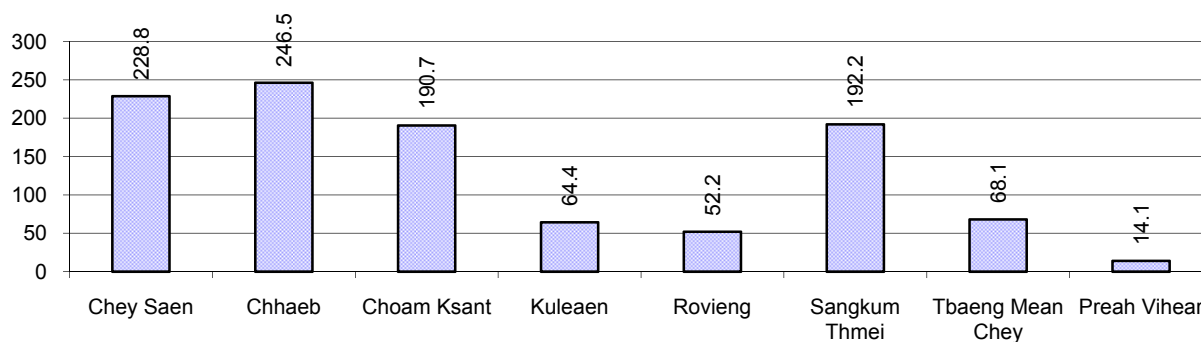
Note: Calculated as a percentage of the total number of families

7.3.14 Ratio of people to Latrines, 2006-2008

Description	2006	2007	2008	
	Ratio	Ratio	Ratio	Number
Ratio of people to latrines	107.3	77.0	59.3	2,828.0

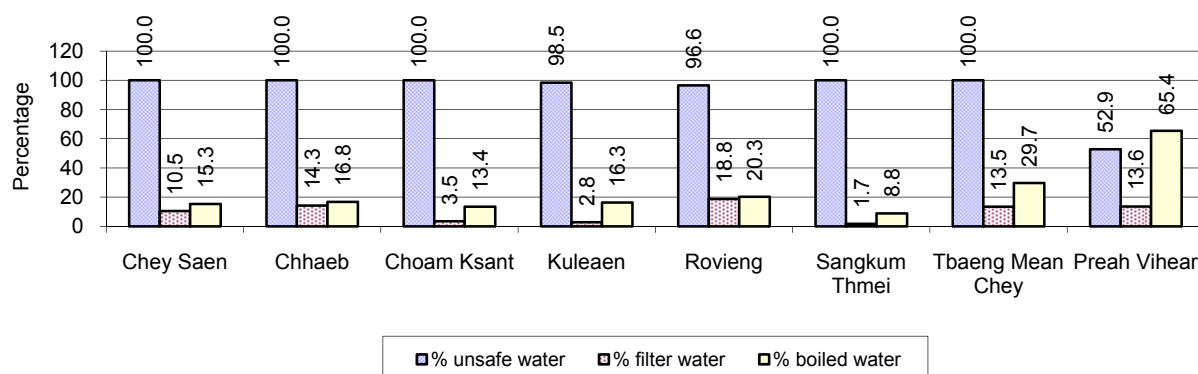
Note: Ratio calculated by dividing the total population by the total number of latrines

7.3.15 Ratio of People to Latrines, by District, in 2008



Note: Ratio calculated by dividing the number of houses with latrines by the total population in a district.

7.3.16 Percentage of Families drinking boiled, filtered or unsafe Water, by District, in 2008



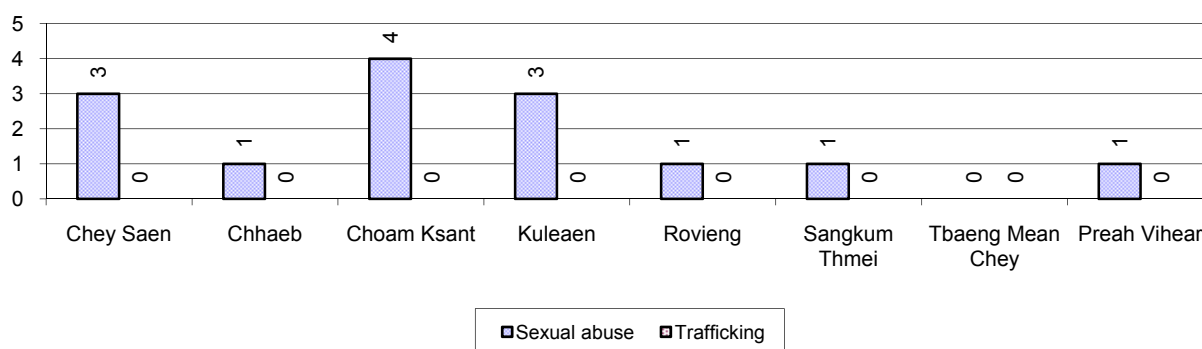
Note: Calculated as a percentage of the total number of families in each district.

7.4 Vulnerable groups

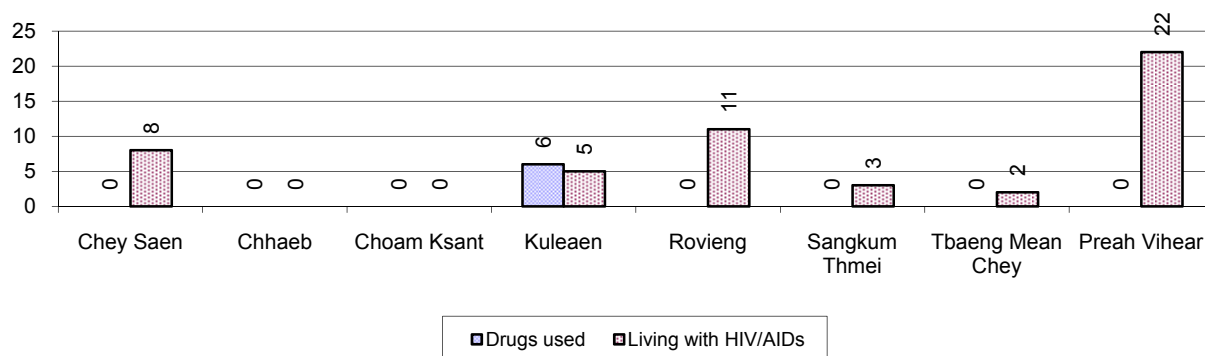
7.4.1 Vulnerable Groups in need of special Protection, 2006-2008

Vulnerable groups	2006	2007	2008
Victims of sexual abuse	26 person(s)	10 person(s)	14 person(s)
Victims of human trafficking	0 person(s)	7 person(s)	0 person(s)
Families with family member(s) using drugs	8 families	2 families	6 families
Families with family member(s) living with HIV/AIDS	19 families	40 families	51 families
Children under 18 yrs old whose parent died of AIDS	28 person(s)	65 person(s)	70 person(s)
Orphaned/abandoned children under 18 yrs old (all cases)	633 person(s)	832 person(s)	817 person(s)
Elderly persons without guardian	191 person(s)	156 person(s)	176 person(s)
Disabled people able to earn an income	102 person(s)	151 person(s)	117 person(s)
Disabled people unable to earn an income	179 person(s)	214 person(s)	259 person(s)
Disabled people under 18 yrs old	98 person(s)	81 person(s)	85 person(s)
Victims of natural disasters	1,352 families	2,573 families	1,558 families
Victims of land mines and unexploded weapons	116 person(s)	47 person(s)	61 person(s)

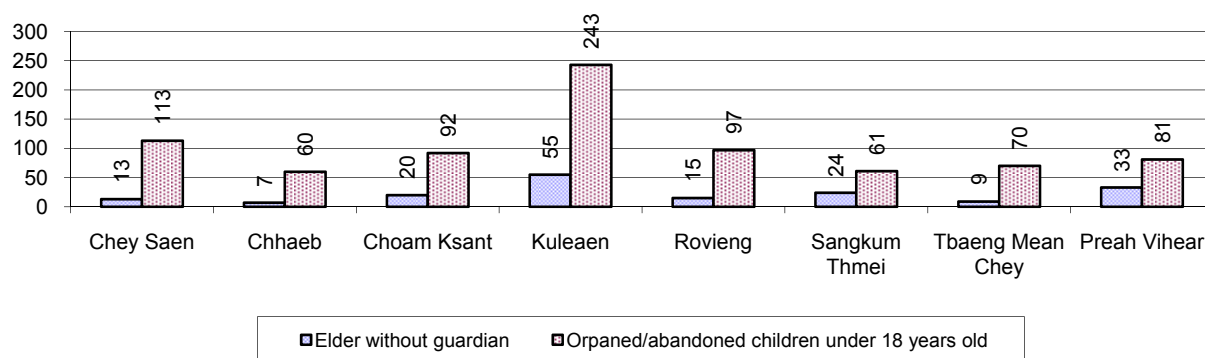
7.4.2 Registered Victims of sexual Abuse or Trafficking, by District, for 2008



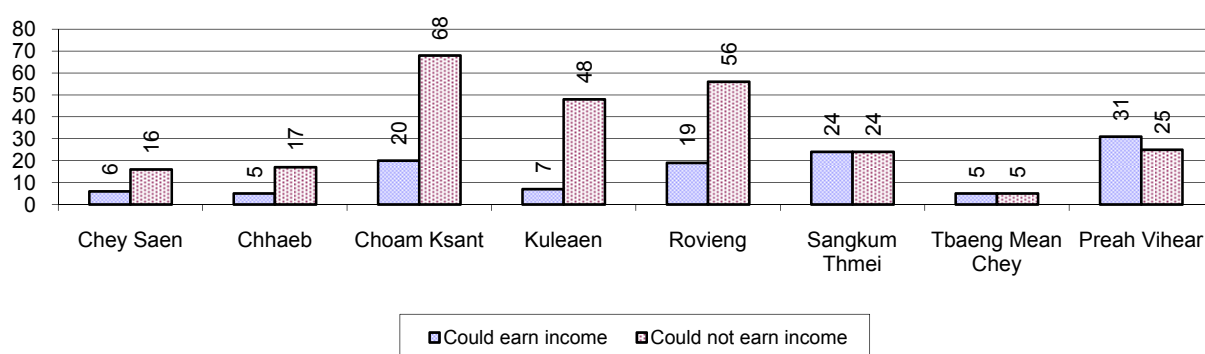
7.4.3 Registered Families with Member(s) using Drugs or living with HIV/AIDS, by District, for 2008



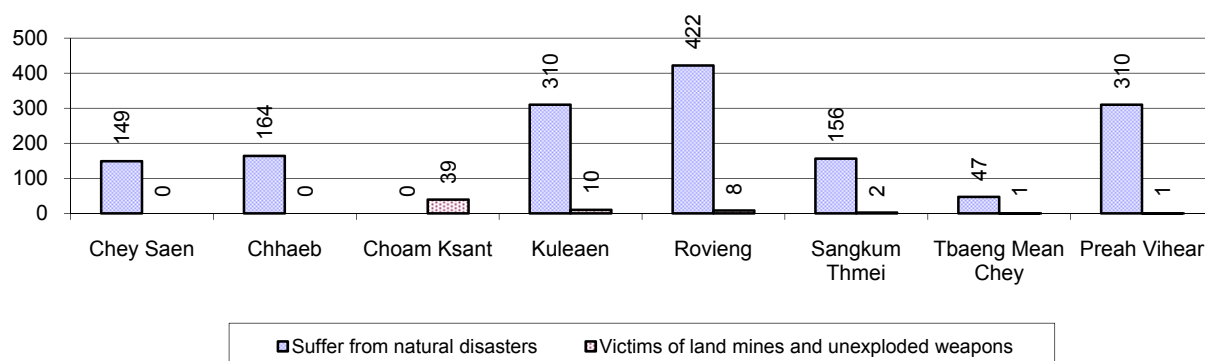
7.4.4 Elderly Persons without a Guardian and orphaned/abandoned Children under 18 years old, by District, for 2008



7.4.5 Number of disabled People who could or could not earn an Income, by District, for 2008



7.4.6 Number of Families who suffered from natural Disasters, and number of Victims of Land Mines and unexploded Weapons, by District, in 2008



7.5 Migration

7.5.1 Migration, 2006-2008

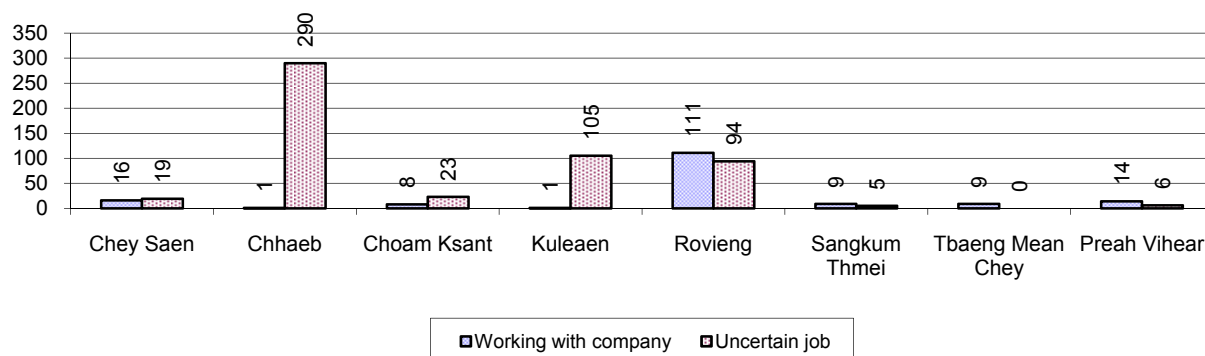
Description	2006	2007	2008
Number of families permanently in-migrated	351 families	636 families	1,013 families
Total number of people	1,608 person(s)	2,568 person(s)	3,063 person(s)
Total number of female	809 person(s)	1,314 person(s)	1,411 person(s)
Number of families permanently out-migrated	216 families	214 families	232 families
Total number of people	793 person(s)	836 person(s)	938 person(s)
Total number of female	429 person(s)	419 person(s)	474 person(s)
Number of families staying temporarily	333 families	396 families	317 families
Total number of people	1,218 person(s)	1,468 person(s)	1,113 person(s)
Total number of female	628 person(s)	862 person(s)	553 person(s)

7.5.2 Job Migration

Description	2006	2007	2008
Number of people migrated to work with company/factory	0%	0%	0% 169 persons
Number of people migrated to work, but have uncertain jobs	1%	1%	1% 542 persons

Note: Calculated as a percentage of the total population of 18-60 year olds

7.5.3 Number of People working outside their home Villages in a Company/Factory or with an uncertain Job in 2008

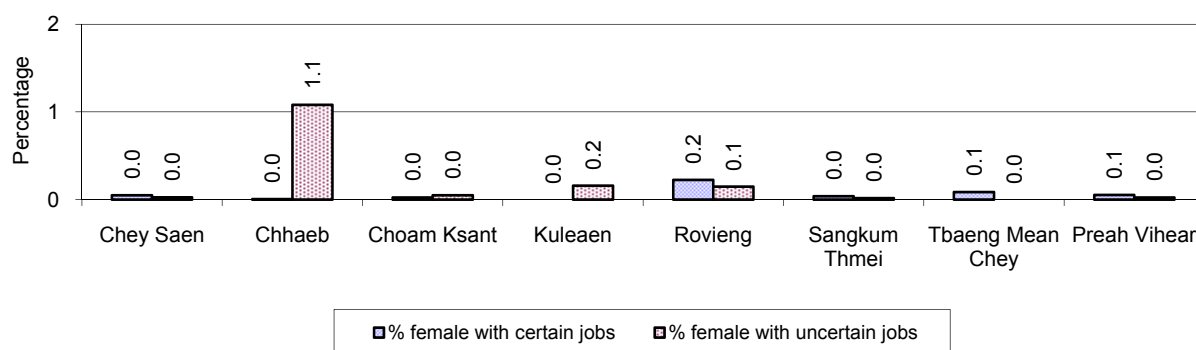


7.5.4 Female migration, 2006-2008

Description	2006 %	2007 %	2008	
			%	Number
Total number of migrants	0.4%	0.5%	0.4%	711 person(s)
Number of female migrants	0.3%	0.3%	0.3%	422 person(s)
Total number of migrants, who go to work with company/factory (with certain jobs)	0.1%	0.1%	0.1%	169 person(s)
Number of female migrants with certain jobs	0.1%	0.1%	0.1%	121 person(s)
Total number of migrants with uncertain jobs	0.4%	0.4%	0.3%	542 person(s)
Number of female migrants with uncertain jobs	0.2%	0.2%	0.2%	301 person(s)

Note: Calculated as a percentage of the total population

7.5.5 Percentage female Migrants with certain and uncertain Jobs, by District, in 2008



Note: Calculated as a percentage of the total population of the district

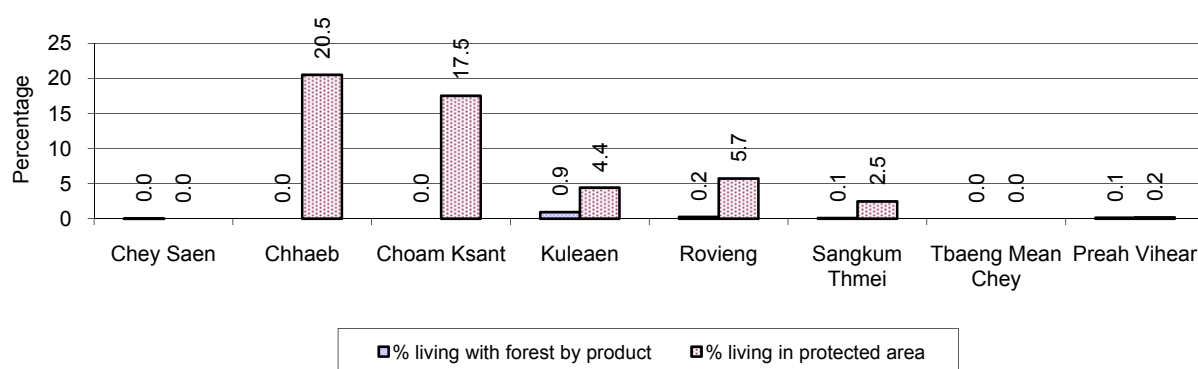
8 Natural Resources and Environment (NRE)

8.1 Families involved with NRE issues, 2006-2008

Description	2006 %	2007 %	2008	
			%	Number
Families living with forest by products	0 %	0 %	0 %	76 families
Families living in a protected area	8 %	9 %	7 %	2,424 families
Houses with access to garbage collection service	0 %	0 %	0 %	12 families
Families affected by environmental pollution	0 %	0 %	0 %	101 families
Families using chemical fertilizer	1 %	1 %	1 %	292 families
Families using chemical pesticide	1 %	1 %	1 %	381 families

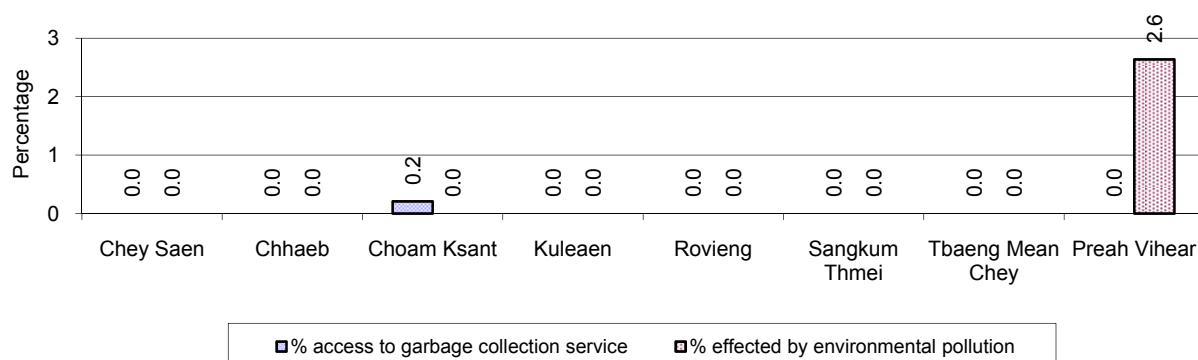
Note: Calculated as a percentage of the total number of families

8.2 Percentage of Families involved with Natural Resource issues, by District, for 2008



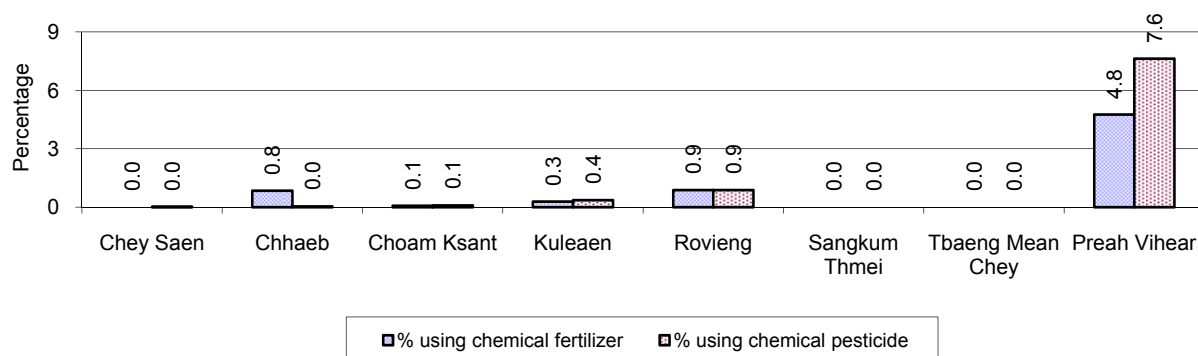
Note: Calculated as a percentage of the number of families in each district

8.3 Percentage Houses with access to Garbage collection and Families affected by environmental Pollution, by District, for 2008



Note: Garbage collection is calculated as a percentage of the total number of houses in each district and families affected by environmental pollution is calculated as a percentage of the total number of families in each district.

8.4 Percentage Families using chemical Fertilizer and chemical Pesticides, by District, for 2008



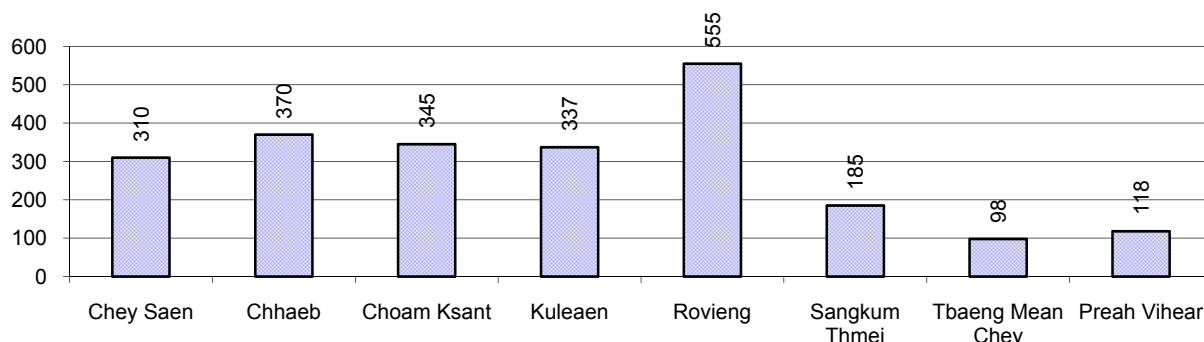
Note: Calculated as a percentage of the total number of families in each district

9 Administration and Security

9.1 Birth Registration, 2006-2009

Description	2006	2007	2008
Number of infants to be registered	2,909 person(s)	3,225 person(s)	3,281 person(s)
Number of unregistered infants the year	1,579 person(s)	2,124 person(s)	2,318 person(s)
Percentage of infants unregistered	54 %	66 %	71 %

9.2 Number of unregistered Infants born in 2008, by District

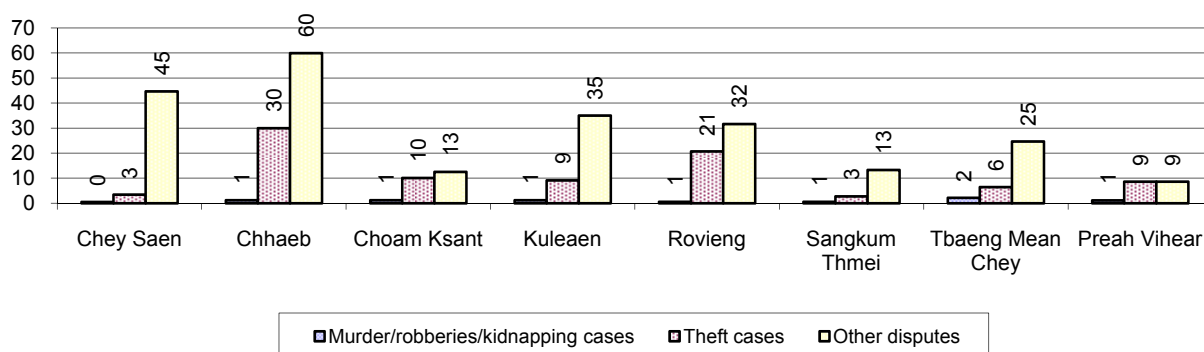


9.3 Registered criminal Cases, 2006-2008

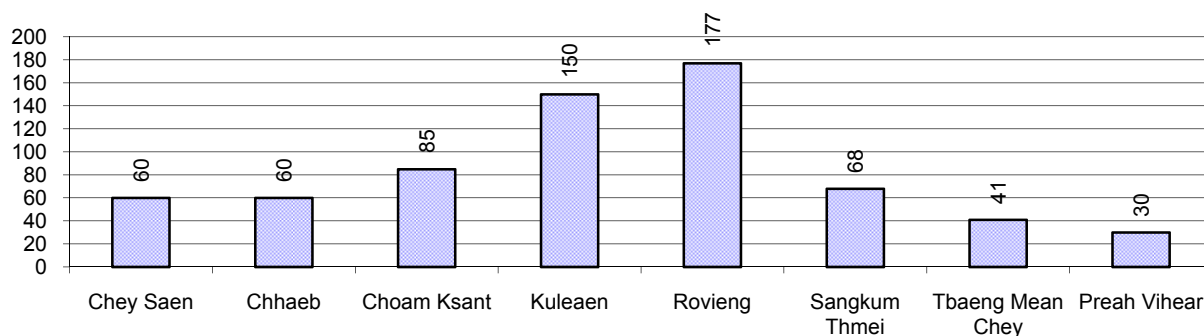
Description	2006	2007	2008
Murders, robberies and kidnapping cases	43 case(s)	29 case(s)	16 case(s)
Theft cases	432 case(s)	183 case(s)	206 case(s)
land dispute cases	466 case(s)	493 case(s)	671 case(s)
Other disputes cases	560 case(s)	520 case(s)	487 case(s)

Note: this reflects only registered criminal cases

9.4 Registered criminal Cases per 10,000 people, by District, for 2008



9.5 Number of registered Land Disputes, by District, in 2008

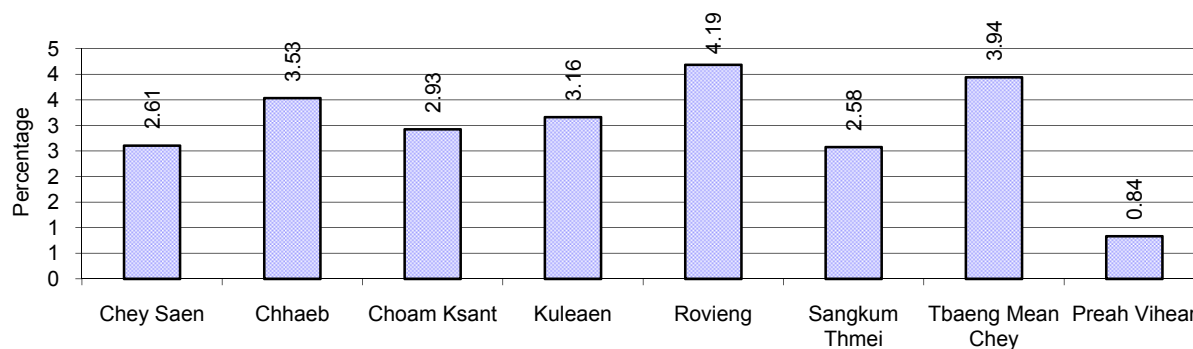


10 Gender

10.1 Reported Domestic Violence, 2006-2008

Description		2006	2007	2008
Families experiencing domestic violence		1,045 families	865 families	1,061 families(s)
% families experiencing domestic violence		3 %	3 %	3 %
Domestic violence cases reported by village chiefs		795 case(s)	624 case(s)	670 case(s)
Type	Physical violence	201 case(s)	288 case(s)	293 case(s)
	Sexual violence	26 case(s)	21 case(s)	41 case(s)
	Mental violence	456 case(s)	173 case(s)	220 case(s)
	Household economic violence	112 case(s)	142 case(s)	116 case(s)
Number of administrative decisions on domestic violence		21 case(s)	246 case(s)	340 case(s)
% of administrative decisions on domestic violence		3 %	39 %	51 %

10.2 Percentage of reported cases of Families experiencing domestic Violence, by District, in 2008



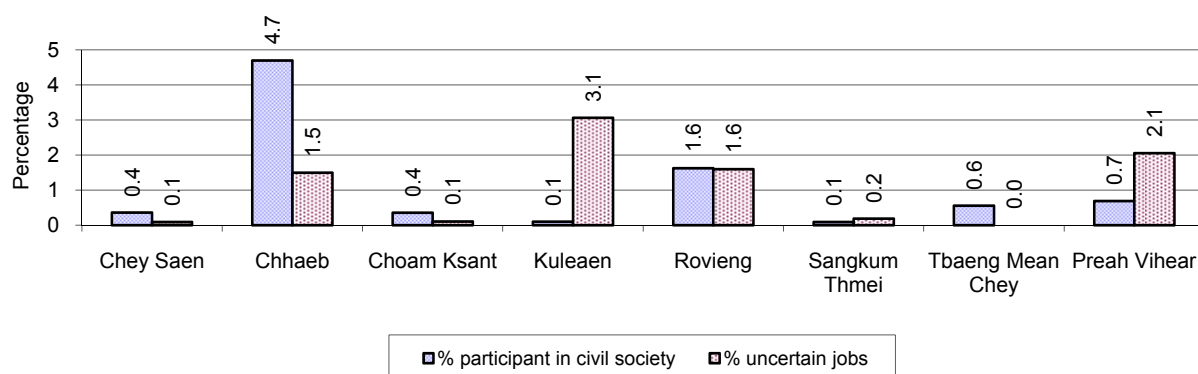
Note: Calculated as a percentage of the total number of families in each district

10.3 Women's involvement, 2006-2008

Description	2006 %	2007 %	2008	
			%	Number
People participating in civil society	1%	3%	2%	3,642 person(s)
Women participating in civil society	0%	2%	1%	1,753 person(s)
People, 18-60 yrs, with uncertain/irregular jobs	1%	3%	2%	1,910 person(s)
Women, 18-60 yrs, with uncertain/irregular jobs	0%	1%	1%	947 person(s)

Note: Participation can be in NGOs, CBOs, credit groups, women's unions, parties and other civil society organizations. The first section is calculated as a percentage of the total population. The second section is calculated as a percentage of the total 18-60 year old population.

10.4 Percentage of Female Participants in Civil Society and of 18-60 year women with uncertain Jobs, by District, in 2008



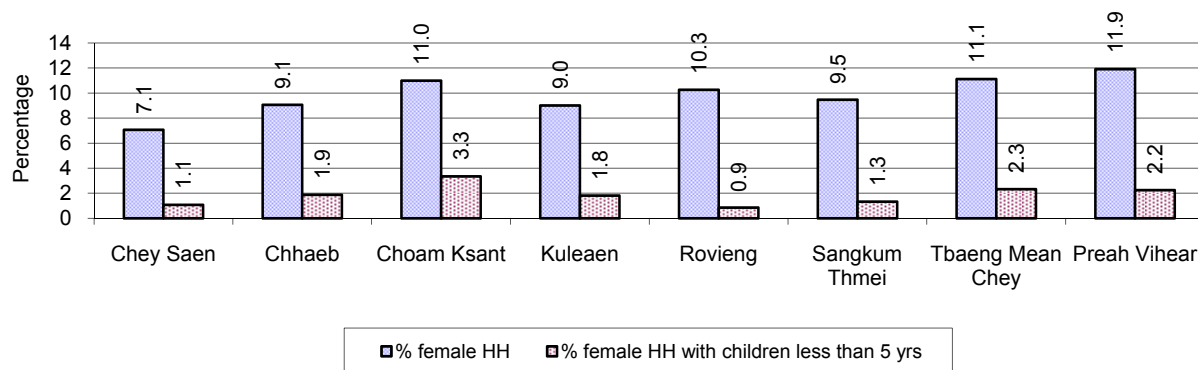
Note: Percentage of female participants in civil society is calculated as a percentage of the total population per district. The percentage of 18-60 years old women with uncertain jobs is calculated as a percentage of the total 18-60 year old population per district.

10.5 Female-headed Households, 2006-2008

Families with:	2006 %	2007 %	2008	
			%	Number
Households in which a woman is the family head	10%	12%	10%	3,445 families
Households in which a woman is the family head with children of less than 5 yrs	2%	2%	2%	634 families

Note: Calculated as a percentage of the total number of families

10.6 Percentage female-headed Households and with Children of less than 5 years old, by District in 2008



Note: Calculated as a percentage of the total number of families in each district
HH: Headed Household

11 Indigenous People in the District

11.1 Ethnic Minorities in the District, 2006-2008

Race of indigenous	2006		2007		2008	
	# families	# population	# families	# population	# families	# population
Phnong	4 families	20 person(s)	144 families	754 person(s)	2 families	17 person(s)
Kouy	3,513 families	17,652 person(s)	3,404 families	17,221 person(s)	4,198 families	20,113 person(s)
Stieng	0 families	0 person(s)	0 families	0 person(s)	0 families	0 person(s)
Mil	0 families	0 person(s)	0 families	0 person(s)	0 families	0 person(s)
Kroal	0 families	0 person(s)	0 families	0 person(s)	0 families	0 person(s)
Thmorn	0 families	0 person(s)	0 families	0 person(s)	0 families	0 person(s)
Khaonh	0 families	0 person(s)	0 families	0 person(s)	0 families	0 person(s)
Tompouonn	1 families	5 person(s)	1 families	7 person(s)	0 families	0 person(s)
Charay	1 families	6 person(s)	1 families	18 person(s)	0 families	0 person(s)
Kroeung	0 families	0 person(s)	1 families	6 person(s)	0 families	0 person(s)
Kavet	0 families	0 person(s)	0 families	0 person(s)	0 families	0 person(s)
Saouch	0 families	0 person(s)	0 families	0 person(s)	0 families	0 person(s)
Lun	0 families	0 person(s)	0 families	0 person(s)	0 families	0 person(s)
Kachak	0 families	0 person(s)	0 families	0 person(s)	0 families	0 person(s)
Praov	0 families	0 person(s)	0 families	0 person(s)	0 families	0 person(s)
Others	318 families	1,719 person(s)	320 families	1,701 person(s)	32 families	169 person(s)
Total	3,837 families	19,382 person(s)	3,871 families	18,953 person(s)	4,232 families	20,282 person(s)

Note: "Others" refer to other ethnic groups which are not listed.

11.2 Other Minorities in the District, 2006-2008

Minority	2006		2007		2008	
	# families	# population	# families	# population	# families	# population
Khmer Islamic	88 families	419 person(s)	71 families	280 person(s)	110 families	493 person(s)
Vietnamese	5 families	6 person(s)	6 families	13 person(s)	7 families	21 person(s)
Laos	21 families	62 person(s)	19 families	106 person(s)	2 families	11 person(s)

Note: Number of indigenous and minority population are additional data, so some village may not recorded.

SECTION C: PLANS AND PROJECTS

12 Priorities and Plans

12.1 Priorities of the Districts in the Province for 2009 by Sector

Below data summarized by sub-sector from the District Priority Activity Matrix (DPAM) taken from the CDPD. The DPAM is used for the District Integration Workshop (DIW), to show what kind of projects the Communes have proposed in their Commune Investment Plan (CIP) for 2009. Donors, departments and other agencies then considers which projects they want to support and which projects they are not interested in. This results in Temporary Agreements between the Commune Council and the Supporter (NGO, Department, private donor, etc).

Sub Sector	Type of Activities	District																Total	
		Chey Saen		Chhaeb		Choam Khsant		Kuleaen		Rovieng		Sangkom Thmei		Tbaeng Mean chey		Preah Vihear			
		Act	Com	Act	Com	Act	Com	Act	Com	Act	Com	Act	Com	Act	Com	Act	Com	Act	Com
Economic																			
Agriculture	Crop cultivation training	27	6	9	6	0	0	17	6	20	10	8	5	4	3	5	2	90	38
	Livestock health	4	2	6	5	5	4	11	6	12	12	7	5	7	4	4	2	56	40
	Livestock training	5	3	6	4	1	1	7	6	6	4	3	3	9	3	2	2	39	26
	Agriculture inputs	12	6	12	5	15	6	13	6	9	6	6	4	16	4	6	2	89	39
	Fisheries	12	4	3	1	4	2	7	3	15	7	8	4	3	1	3	1	55	23
Roads	Road infrastructure construction	9	4	14	6	10	6	6	3	14	10	11	5	5	3	4	2	73	39
	Road infrastructure rehabilitation	5	4	3	2	5	5	5	5	11	11	2	2	1	1	2	2	34	32
Irrigations	Irrigation infrastructure construction	9	5	0	0	5	4	3	2	5	5	4	3	0	0	0	0	26	19
	Irrigation infrastructure rehabilitation	3	3	1	1	4	4	2	2	6	5	3	3	5	3	0	0	24	21
Credit	Cash credit	1	1	0	0	0	0	0	0	2	2	0	0	0	0	0	0	3	3
	Agriculture inputs credit	2	1	0	0	1	1	0	0	0	0	0	0	0	0	0	0	3	2
	Animal bank	0	0	4	4	0	0	1	1	1	1	0	0	0	0	1	1	7	7
	Credit management	0	0	0	0	1	1	0	0	0	0	0	0	0	0	0	0	1	1
Rural economy	Rural market	0	0	1	1	0	0	0	0	0	0	0	0	0	0	0	0	1	1
	Tourist side	0	0	0	0	0	0	0	0	0	0	1	1	0	0	0	0	1	1
	Others	2	2	5	5	1	1	4	4	5	5	1	1	0	0	0	0	18	18
Social																			
Health	Reproductive health	0	0	0	0	2	2	0	0	3	2	1	1	2	2	2	2	10	9
	HIV/AIDS	1	1	0	0	0	0	0	0	0	0	0	0	0	0	0	0	1	1
	Health campaign	5	4	8	5	1	1	2	2	0	0	1	1	4	4	1	1	22	18
	Immunization	0	0	2	1	1	1	0	0	2	2	1	1	0	0	1	1	7	6

Sub Sector	Type of Activities	District																Total		
		Chey Saen		Chhaeb		Choam Khsant		Kuleaen		Rovieng		Sangkom Thmei		Tbaeng Mean chey		Preah Vihear				
		Act	Com	Act	Com	Act	Com	Act	Com	Act	Com	Act	Com	Act	Com	Act	Com	Act	Com	
	Health service delivery	0	0	7	3	1	1	0	0	0	0	0	0	0	0	0	0	0	8	4
	Health capacity building	0	0	1	1	1	1	0	0	0	0	0	0	1	1	0	0	3	3	
	TBA support/training	5	3	1	1	6	3	0	0	2	2	5	3	4	2	0	0	23	14	
	Malaria control	5	3	5	4	1	1	6	6	0	0	1	1	2	2	0	0	20	17	
	Dengue fever control	0	0	2	2	1	1	5	5	0	0	0	0	1	1	0	0	9	9	
	Health equity fund	2	2	0	0	0	0	0	0	0	0	0	0	0	0	0	0	2	2	
	Health center operation	0	0	1	1	2	1	0	0	0	0	0	0	0	0	0	0	3	2	
	Early child care	0	0	6	5	0	0	0	0	0	0	0	0	0	0	0	0	6	5	
	Child health care	0	0	1	1	0	0	0	0	0	0	0	0	0	0	0	0	1	1	
	Domestic sanitation	6	6	6	5	4	4	2	2	7	6	2	2	4	3	0	0	31	28	
	Health infrastructure construction	5	5	4	4	4	4	2	2	4	4	3	3	0	0	0	0	22	22	
	Water supply	3	2	1	1	2	2	1	1	4	4	0	0	1	1	0	0	12	11	
	Drinking wells/pond construction	10	6	3	3	13	6	7	5	7	6	5	5	5	4	1	1	51	36	
	Drinking wells/pond rehabilitation	3	2	6	5	0	0	3	2	3	3	1	1	1	1	0	0	17	14	
Education	Literacy	12	6	9	5	12	5	9	4	5	3	8	4	6	4	0	0	61	31	
	School building	5	5	7	6	13	6	1	1	8	4	3	3	0	0	0	0	37	25	
	Kindergarten and child care	2	1	4	3	0	0	1	1	8	7	4	3	2	2	2	1	23	18	
	School enrollment	2	2	8	5	6	5	7	6	11	7	6	5	3	2	0	0	43	32	
	School dropout reduction	1	1	2	2	4	3	0	0	9	6	3	2	4	4	2	2	25	20	
	Vocational training	0	0	0	0	0	0	0	0	1	1	0	0	0	0	1	1	2	2	
	Non formal education	1	1	0	0	0	0	0	0	6	4	0	0	0	0	0	0	7	5	
Social other	Disabled people	0	0	0	0	0	0	0	0	1	1	1	1	0	0	0	0	2	2	
	Relief	0	0	0	0	1	1	0	0	0	0	0	0	0	0	0	0	1	1	
	Vulnerable people	1	1	1	1	0	0	0	0	4	4	0	0	0	0	0	0	6	6	
	Elderly people	0	0	0	0	0	0	0	0	1	1	0	0	1	1	0	0	2	2	
NREM																				
NREM education	NREM training	14	6	17	6	12	6	12	5	24	11	8	5	6	4	3	2	96	45	
	NREM campaign	0	0	1	1	0	0	0	0	0	0	0	0	0	0	0	0	1	1	
Natural resource protection	Tree planting	0	0	1	1	0	0	0	0	0	0	0	0	0	0	0	0	1	1	
	Fisheries protection	0	0	3	3	0	0	0	0	4	4	0	0	0	0	0	0	7	7	
	Forestry protection	2	2	4	4	1	1	3	3	2	2	5	4	0	0	0	0	17	16	
	Wildlife/temple protection	0	0	3	2	0	0	0	0	0	0	0	0	0	0	0	0	3	2	

Sub Sector	Type of Activities	District																Total	
		Chey Saen		Chhaeb		Choam Khsant		Kuleaen		Rovieng		Sangkum Thmei		Tbaeng Mean chey		Preah Vihear			
		Act	Com	Act	Com	Act	Com	Act	Com	Act	Com	Act	Com	Act	Com	Act	Com	Act	Com
Administration and Security																			
CS Administration	CS capacity building	4	2	14	6	1	1	0	0	9	9	6	5	0	0	0	0	34	23
	CS planning formulation	0	0	2	2	0	0	0	0	0	0	0	0	0	0	0	0	2	2
	CS furniture/supplies	0	0	8	2	0	0	0	0	0	0	1	1	0	0	0	0	9	3
	Land used planning	12	6	18	7	16	6	5	4	17	9	8	5	6	4	2	2	84	43
Local Security	Local security	4	4	7	6	3	3	3	3	12	8	0	0	2	2	0	0	31	26
	Demining	0	0	0	0	0	0	0	0	0	0	1	1	0	0	0	0	1	1
Local Society	Information dissemination	1	1	1	1	0	0	3	2	1	1	0	0	2	2	3	2	11	9
	Community organization	0	0	2	2	0	0	0	0	0	0	0	0	0	0	0	0	2	2
Gender																			
Gender policy support	Gender mainstreaming	1	1	9	5	0	0	0	0	2	2	3	2	5	4	1	1	21	15
	Gender capacity building	0	0	2	2	1	1	0	0	5	5	1	1	0	0	1	1	10	10
	Women and children rights	4	4	5	4	4	4	0	0	3	3	2	2	0	0	1	1	19	18
	Skill training for women	1	1	3	2	0	0	0	0	1	1	2	2	2	2	1	1	10	9
Gender legal protection	Domestic violence prevention	9	6	7	6	6	6	7	6	16	11	5	5	4	4	2	2	56	46
	Anti-trafficking	0	0	1	1	2	2	1	1	0	0	0	0	0	0	0	0	4	4
	Child protection	3	2	2	2	0	0	0	0	0	0	0	0	3	3	1	1	9	8

Act.: number of activities proposed relating to a sub-sector. **Com.:** number of communes that proposed activities relating to a sub-sector.

12.2 Total Expenditure on C/S Fund Projects by sector and district between 2005 and 2008

Sector	Total Cost in Million Riels							
	Chey Saen	Chhaeb	Choam Ksant	Kuleaen	Rovieng	Sangkum Thmei	Tbaeng Mean Chey	Preah Vihear
Domestic Sanitation								5.41
Education		77.50		183.95				
Irrigation					46.18			
Rural Domestic Water Supplies	77.33	31.50	117.50	13.12	84.22	121.13	56.34	12.70
Rural Transport	565.00	680.40	542.97	441.91	1,159.08	501.97	409.50	279.84

Source: PID

13 District level Projects from 2006 to 2009

District Initiative Projects are funded by Danida and DFID through the PSDD (UNDP, DFID and SIDA).

Funding for 2006-2008

Between 2006 and 2008 there were 14 provinces funded by PSDD and 10 by Danida and DFID. The list of provinces and who funded them is below

Danida and DFID funded DIPs:

Kampong Cham	Kampong Speu	Koh Kong	Kratie	Monduliri
Pursat	Ratanakiri	Siem Reap	Sihanoukville	Kep

PSDD funded DIPs:

Banteay Meanchey	Battambang	Kampong Chhnang	Kandal	Phnom Penh
Prey Veng	Svay Rieng	Takeo	Kampong Thom	Preah Vihear
Stung Treng	Kampot	Oddar Meanchey	Pailin	

Funding for 2009

In 2009 there was a change to the number of provinces funded by the two streams. Danida and DFID were still funding the same 10 provinces they had been funding the three years previous, but two more provinces were added *Kampong Thom and Kampot*. Now PSDD funded 12 provinces and Danida and DFID funded 12.

13.1 District Initiative Infrastructure Projects from 2006 to 2009

13.1.1 District Initiative Infrastructure Projects for 2006 to 2008

District	Date	Project Name	Implementing Agencies	Budget (US\$)	Project Output & Capacity	Number of Beneficiaries
Kuleaen	2007	Repair laterite road 800 m 2,170 with culverts 2 places	Inter-commune	8,263.00		
Kuleaen	2008	Laterite road rehabiulitation	Inter-commune	8,350.00	890m	3 communes
Rovieng	2006	Laterite road and 5 single culverts	Inter-commune	12,336.00		
Rovieng	2007	Repair laterite road 2,170 with culverts 2 places	Inter-commune	8,000.00		
Rovieng	2008	Laterite road rehabiulitation	Inter-commune	8,363.00	770m	2 communes

13.1.2 District Initiative Infrastructure Projects in 2009

District	Project Name	Sector	Implementing Agency	Budget	Project outputs/ capacities	No. of Beneficiaries		Progress	Remarks on Issues of Progress
						Total	Female		
Kulaen	Laterite road construction	RRD	PMC	\$10,600.00	1030m	17,505	8,474	0%	Bid, singed and implement on 10th Nov.
Kulaen	Triple culvert construction	RRD	PMC	\$1,632.00	1 place	17,505	8,474	0%	Bid, singed and implement on 10th Nov.
Kulaen	Wood bridge with concrete abutments construction	RRD	PMC	\$7,735.00	1 place	17,505	8,474	0%	Bid, singed and implement on 10th Nov.
Rovieng	Laterite road construction	RRD	PMC	\$8,331.00	1032m	6,520	3,300	0%	Bid, singed and implement on 25th June.
Rovieng	Triple culvert construction	RRD	PMC	\$1,627.00	1 places	6,520	3,300	0%	Bid, singed and implement on 25th June.
Rovieng	Single pipe culvert construction	RRD	PMC	\$1,647.00	2 places	6,520	3,300	0%	Bid, singed and implement on 25th June.
Rovieng	Wood bridge with concrete abutments construction	RRD	PMC	\$7,036.00	1 place	6,520	3,300	0%	Bid, singed and implement on 25th June.
Sangkum Thmei	Laterite road construction	RRD	PMC	\$11,050.00	1003m	13,914	7,170	0%	Bid, singed and implement on 15th Nov.
Sangkum Thmei	Culvert construction	RRD	PMC	\$2,062.00	3 places	13,914	7,170	0%	Bid, singed and implement on 15th Nov.
Sangkum Thmei	Wood bridge with concrete abutments construction	RRD	PMC	\$6,901.00	1 place	13,914	7,170	0%	Bid, singed and implement on 15th Nov.

13.2 District Initiative Service Projects from 2006 to 2009

13.2.1 District Initiative Service Projects for 2006 to 2008

District	Date	Project Names	Implementing agencies	Budget (US\$)	Project Output & Capacity	Number of Beneficiaries
Kulen	2007	Dissemination on law prevention from domestic violence	District WA	512.00		
Kulen	2007	Dissemination on land law	District Land	2,300.00		
Kulen	2008	Dissemination on environment protection law	District Environment	789.60	6 times	6 communes
Kulen	2008	Animal vaccination and prevention	District AGRI	1,752.00	9 times, 9 villages	5 communes
Rovieng	2006	Education on domestic violence for general population	Women Affairs department	1,953.00		
Rovieng	2006	Education of land law for general population	Land management department	3,383.00		
Rovieng	2007	Training on village VET agents	District Agri	2,812.00		
Rovieng	2008	Animal vaccination and prevention	District AGRI	2,158.00	6 times	6 communes
Rovieng	2008	Dissemination on traffic law	DPW	500.00	2 times	12 communes

13.2.2 District Initiative Service Projects in 2009

District	Project Name	Sector	Implementing Agency	Budget	Project outputs/ capacities	No. of Beneficiaries		Progress	Remarks on Issues of Progress
						Total	Female		
Kulen	Domestic animal vaccination	AGR	Agriculture Office	\$1,872.00	6 trainings	360	120	20%	Being implemented
Kulen	Domestic violence dissemination and protection of victims	GEN	WA Office	\$1,665.00	12 times	840	340	100%	Completed
Kulen	Dissemination on Malaria and Dengue Fever	HEA	Health Center/DO Office	\$1,845.00	6 trainings	960	480	0%	Will start in August
Kulen	Dissemination campaign on encouragement of children for schooling	EDU	Education Office	\$870.00	6 trainings	480	240	0%	Will start in August
Rovieng	Domestic violence dissemination and protection	GEN	WA Office	\$1,785.00	6 trainings	1,036	561	100%	Completed

District	Project Name	Sector	Implementing Agency	Budget	Project outputs/ capacities	No. of Beneficiaries		Progress	Remarks on Issues of Progress
						Total	Female		
	of victims								
Rovieng	Dissemination on forestry regulation	AGR	Forestry Admin	\$2,916.00	24 training	600	60	40%	Being implemented
Rovieng	Domestic animal vaccination	AGR	Agriculture Office	\$1,872.00	6 trainings	350	80	10%	Being implemented
Sangkum Thmey	Domestic violence dissemination and protection of victims	GEN	WA Office	\$985.00	5 times	190	95	100%	Completed
Sangkum Thmey	Land law dissemination	LUM	LMUCC Office	\$595.00	3 times	500	250	10%	Being implemented
Sangkum Thmey	Dissemination on forestry regulation	AGR	Forestry Admin	\$835.00	5 times	400	200	100%	Completed
Sangkum Thmey	Training on pig raising skill	AGR	Agriculture Office	\$1,050.00	5 times	300	160	100%	Completed
Sangkum Thmey	Dissemination on health care and contaminated diseases	HEA	Health Center/DO Office	\$835.00	5 times	400	200	100%	Completed

13.3 Inter Commune Council Projects in 2008 and 2009

13.3.1 ICC Projects in 2008

There are no ICC projects in this Province at this time

13.3.2 ICC Projects in 2009

There are no ICC projects in this Province at this time

Source: ICC project, Ministry of Interior (DoLA), -UNDP project for Local Governance – DDLG

13.4 Provincial Investment Fund (PIF) and District Investment Fund (DIF)

The PIF and DIF receive funding from a range of donors – PSDD, DANIDA, UNICEF, IFAD and CANADA. However in this section we only include the PIF and DIF projects funded by PSDD and DANIDA through NRML.

13.4.1 PIF and DIF 2008

NCDD Standard Outputs			Budget
Output Description	Unit	Quantity	
Unit Title: Support to Contract Admin Unit		Unit Number: 13/CAU/08-01	
CAU staff support costs	Month	12	\$ 15,330.67
Program administrative support	Month	12	\$ 11,610.00
Publicity	Month	12	\$ 3,680.00
Program meetings and workshops	Month	12	\$ 755.00
Other program support costs	Month	1	\$ 274.00
Training and capacity building by/for CAU	Person-Day	(40F+60M) X 10D	\$ 80.00
Contingencies			\$ 3,950.00
Sub-total of unit			\$ 35,679.67
Unit Title: Support to Finance Unit		Unit Number: 13/FIN/08-01	
Support to ExCom Finance staff	Month	12	\$ 5,400.00
Support to Provincial Treasury staff	Month	12	\$ 5,940.00
Training and capacity building by/for Finance staff	Person-Day	(10F+20M) X 1D	\$ 205.00
Contingencies			\$ 0.00
Sub-total of unit			\$ 11,545.00
Unit Title: Support to Technical Support Unit		Unit Number: 13/TSU/08-00	
Support to ExCom TSU	Month	12	\$ 17,025.00
Training and Capacity Building for ExCom TSU	Person-Day	(0F+200M) X 1D	\$ 550.00
Training and Capacity Building by ExCom TSU	Person-Day	(50F+550M) X 1D	\$ 1,200.00
Contingencies			\$ 0.00
Sub-total of unit			\$ 18,775.00
Unit Title: Support to Project to Support Democratic Development through Decentralization and Deconcentration		Unit Number: 13/PSD/08-01	
PSDD staff support costs	Month	12	\$ 23,237.00
PSDD support staff	Month	12	\$ 3,900.00
Contingencies			\$ 0.00
Sub-total of unit			\$ 27,137.00
Unit Title: Support to Local Administration Unit / PoLA		Unit Number: 13/LAU/08-01	
Support to ExCom LAU	Month	12	\$ 47,657.00
Organise C/S Council Congress	Congress	1	\$ 2,425.00
Accountability Working Group	Month	7	\$ 565.00
Other LAU costs	Month	12	\$ 915.00
Training and Capacity Building for ExCom LAU	Person-Day	(200F+300M) X 1D	\$ 1,437.00
Training and Capacity Building by ExCom LAU	Day	(500F+1500M) X 1D	\$ 10,078.00
Contingencies			\$ 0.00
Sub-total of unit			\$ 63,077.00
Contract Title: District Initiative program in Kuleaen district		Contract Number: 13/D04/0802-00	
Road construction/rehabilitation	Metre	1000	\$ 10,361.40
Animals (pig, cow, buffalo, chicken, and duck) vaccination and parasite control program.	Animal	3000	\$ 1,752.00
NREM Education campaign	Event	6	\$ 789.60
Office stationary and supplies	Per-month	12	\$ 1,145.00
Contingencies			\$ 105.00
Sub-total of contract			\$ 14,153.00
Contract Title: District initiative programme in Rovieng district		Contract Number: 13/D05/0801-00	
Road construction/rehabilitation	Metre	1300	\$ 10,192.00
Office stationary and supplies	Per-month	12	\$ 1,145.00
Animals (pig, cow, buffalo, chicken, and duck) vaccination and parasite control program.	Animal	4000	\$ 2,158.00
Dissemination of traffic rules and regulations	Peron-day	(30F+70M) X 4D	\$ 500.00
Contingencies			\$ 105.00
Sub-total of contract			\$ 14,100.00
Contract Title: Support to Non Formal Education classes		Contract Number: 13/EDU/0801-00	
NFE classes	Class (25 students)	10	\$ 2,146.00
Monitoring	Person-Day	120	\$ 600.00
NFE materials	Set	250	\$ 2,755.50
Operational Support	Month / item	10	\$ 240.00

NCDD Standard Outputs			Budget
Output Description	Unit	Quantity	
Teacher training	Person-Day	(150F+100M) X 1D	\$ 1,110.00
Contingencies			\$ 148.50
Sub-total of contract			\$ 7,000.00
Contract Title: Support to gender mainstreaming and domestic violence prevention.		Contract Number: 13/GEN/0801-00	
Gender campaign	Event	7	\$ 5,848.23
Monitoring	Person-Day	56	\$ 228.00
Operational Support	Month / item	12	\$ 1,440.00
Contingencies			\$ 99.27
Sub-total of contract			\$ 7,615.50
Contract Title: Support to landmine clearance and non-explosion weapon		Contract Number: 13/LUM/0801-00	
Operational Support	Month / item	477	\$ 6,720.00
Provincial land use planning unit	Hectare	105	\$ 1,013.00
Monitoring	Person-Day	60	\$ 210.00
Land use plans process	Plan	107	\$ 410.00
Contingencies			\$ 207.00
Sub-total of contract			\$ 8,560.00
Contract Title: Awareness on Environment		Contract Number: 13/NRM/0801-01	
NREM Education campaign	Event	14	\$ 1,782.40
Contingencies			\$ 17.60
Sub-total of contract			\$ 1,800.00
Contract Title: Support to planning formulation and integration		Contract Number: 13/PLA/0801-01	
Provincial Development Plan	PDP	102	\$ 634.00
District Integration	Workshop	104	\$ 909.00
Commune database	Data book	103	\$ 2,367.14
Operational Support	Month / item	12	\$ 1,920.00
Monitoring	Person-Day	25	\$ 350.00
Contingencies			\$ 169.86
Sub-total of contract			\$ 6,350.00
Contract Title: Support to rural road repair		Contract Number: 13/RRD/0801-00	
Road construction/rehabilitation	Metre	500	\$ 16,915.93
Monitoring	Person-Day	90	\$ 465.00
Operational Support	Month / item	8	\$ 152.00
Routine Maintenance	Metre	500	\$ 71.00
Contingencies			\$ 143.00
Sub-total of contract			\$ 17,746.93
GRAND TOTAL			\$ 233,539.10

Note: M= Male, F= Female, D=day

13.4.2 PIF and DIF Projects for 2009

NCDD Standard Outputs			Budget
Output Description	Unit	Quantity	
Unit Title: Support to Contract Admin Unit		Unit Number: 13/CAU/09-00	
CAU staff support costs	Month	12	\$ 10,104.00
Program administrative support	Month	12	\$ 11,898.00
Program support staff	Month	12	\$ 2,520.00
Publicity	Month	12	\$ 3,457.50
Program meetings and workshops	Month	12	\$ 1,110.00
Training and capacity building by/for CAU	Person-Day	(0F+7M) X 4D	\$ 96.00
Contingencies			\$ 4,286.00
Sub-total of unit			\$ 33,471.50
Unit Title: Support to Finance Unit		Unit Number: 13/FIN/09-00	
Support to ExCom Finance staff	Month	12	\$ 8,560.00
Support to Provincial Treasury staff	Month	12	\$ 6,270.00
Training and capacity building by/for Finance staff	Person-Day	(140F+60M) X 1D	\$ 340.00
Contingencies			\$ 0.00
Sub-total of unit			\$ 15,170.00
Unit Title: Support to Technical Support Unit		Unit Number: 13/TSU/09-00	
Support to ExCom TSU	Month	12	\$ 17,160.00
Training and Capacity Building for ExCom TSU	Person-Day	(0F+10M) X 6D	\$ 296.00
Training and Capacity Building by ExCom TSU	Person-Day	(0F+256M) X 1D	\$ 632.00
Contingencies			\$ 0.00
Sub-total of unit			\$ 18,088.00
Unit Title: Support to Project to Support Democratic Development through Decentralization and Deconcentration		Unit Number: 13/PSD/09-00	
PSDD staff support costs	Month	12	\$ 26,082.67
PSDD support staff	Month	13	\$ 3,984.50
Contingencies			\$ 0.00

NCDD Standard Outputs			Budget
Output Description	Unit	Quantity	
Sub-total of unit			\$ 30,067.17
Unit Title: Support to Local Administration Unit / PoLA		Unit Number: 13/LAU/09-01	
Support to ExCom LAU	Month	12	\$ 38,436.00
Organise C/S Council Congress	Congress	1	\$ 2,390.00
Accountability Working Group	Month	7	\$ 918.00
Other LAU costs	Month	12	\$ 1,965.00
CCWC	Committee	49	\$ 1,436.50
Training and Capacity Building for ExCom LAU	Person-Day	(39F+44M) X 22D	\$ 4,980.50
Training and Capacity Building by ExCom LAU	Day	(596F+1519M) X 83D	\$ 3,893.00
Contingencies			\$ 0.00
Sub-total of unit			\$ 54,019.00
Contract Title: culture and heritage revilaterization		Contract Number: 13/CUL/0901-01	
Operational Support	Month / item	9	\$ 60.00
Cultural training for local performers	Person-Day	(9F+10M) X 15D	\$ 1,067.20
Culture education and training to general population	Person-Day	(35F+35M) X 5D	\$ 825.00
Contingencies			\$ 47.80
Sub-total of contract			\$ 2,000.00
Contract Title: District Initiative Program, Kulean district		Contract Number: 13/D04/0902-00	
Road construction/rehabilitation	Metre	1000	\$ 25,832.50
Animals (pig, cow, buffalo, chicken, and duck) vaccination and parasite control program.	Animal	4000	\$ 1,872.00
Monitoring of projects and activities	Person-day	30	\$ 50.00
Office stationary and supplies	Per-month	12	\$ 2,640.00
Curriculum/learning materials	Set	6	\$ 870.00
Capacity building training for district officials	Peron-day	(5F+20M) X 12D	\$ 240.00
Continuing health education	Person-Day	(40F+40M) X 12D	\$ 1,845.00
Domestic violence prevention training	Person-Day	(35F+35M) X 12D	\$ 1,665.00
Contingencies			\$ 70.00
Sub-total of contract			\$ 35,084.50
Contract Title: District Initiative Program, Rovieng district		Contract Number: 13/D05/0901-00	
Road construction/rehabilitation	Metre	2500	\$ 22,097.00
Forestry Awareness campaign	Event	24	\$ 2,916.00
Animals (pig, cow, buffalo, chicken, and duck) vaccination and parasite control program.	Animal	4000	\$ 1,872.00
Monitoring of projects and activities	Person-day	20	\$ 50.00
Office stationary and supplies	Per-month	12	\$ 2,640.00
Capacity building training for district officials	Peron-day	(10F+15M) X 8D	\$ 240.00
Domestic violence prevention training	Person-Day	(35F+35M) X 12D	\$ 1,785.00
Contingencies			\$ 70.00
Sub-total of contract			\$ 31,670.00
Contract Title: District Initiative Program, Sangkum Thmei district		Contract Number: 13/D06/0903-00	
Road construction/rehabilitation	Metre	3000	\$ 22,700.00
Forestry Awareness campaign	Event	5	\$ 835.00
Office stationary and supplies	Per-month	12	\$ 2,555.00
Monitoring of projects and activities	Person-day	30	\$ 75.00
Land conflict resolution/awareness training	Person-Day	(50F+50M) X 3D	\$ 595.00
Farmers trained on related AH and P extension techniques and demonstration.	Person-Day	(15F+15M) X 10D	\$ 1,050.00
Capacity building training for district officials	Peron-day	(10F+15M) X 5D	\$ 290.00
Domestic violence prevention training	Person-Day	(50F+50M) X 5D	\$ 985.00
Continuing health education	Person-Day	(200F+200M) X 5D	\$ 835.00
Contingencies			\$ 80.00
Sub-total of contract			\$ 30,000.00
Contract Title: Literacy improvement program in rural area.		Contract Number: 13/EDU/0901-00	
NFE classes	Class (25 students)	8	\$ 2,760.00
Monitoring	Person-Day	192	\$ 1,440.00
NFE materials	Set	8	\$ 1,615.60
Operational Support	Month / item	12	\$ 420.00
Teacher training	Person-Day	(3F+5M) X 8D	\$ 636.00
Contingencies			\$ 128.40
Sub-total of contract			\$ 7,000.00
Contract Title: Gender Improving and domestic violent reducing		Contract Number: 13/GEN/0901-00	
Gender campaign	Event	28	\$ 5,805.00
Monitoring	Person-Day	24	\$ 180.00
Operational Support	Month / item	12	\$ 1,470.00
Contingencies			\$ 95.00
Sub-total of contract			\$ 7,550.00
Contract Title: Mine action plan for clearance		Contract Number: 13/LUM/0901-00	

NCDD Standard Outputs			Budget
Output Description	Unit	Quantity	
Operational Support	Month / item	12	\$ 7,400.00
Provincial land use planning unit	Hectare	100	\$ 1,207.00
Monitoring	Person-Day	140	\$ 490.00
Land use plans process	Plan	3	\$ 468.00
Contingencies			\$ 185.00
Sub-total of contract			\$ 9,750.00
Contract Title: Land Management Law disseminating to villagers		Contract Number: 13/LUM/0902-00	
Operational Support	Month / item	12	\$ 360.00
Land conflict resolution/awareness training	Person-Day	(35F+35M) X 20D	\$ 3,005.00
Contingencies			\$ 79.00
Sub-total of contract			\$ 3,444.00
Contract Title: Provincial Development Planning		Contract Number: 13/PLA/0901-00	
Provincial Development Plan	PDP	1	\$ 545.00
District Integration	Workshop	7	\$ 1,619.50
Commune database	Data book	208	\$ 3,713.14
Operational Support	Month / item	12	\$ 1,760.00
Monitoring	Person-Day	45	\$ 354.00
Contingencies			\$ 114.36
Sub-total of contract			\$ 8,106.00
Contract Title: Rural road development		Contract Number: 13/RRD/0901-00	
Road construction/rehabilitation	Metre	600	\$ 11,655.00
Monitoring	Person-Day	48	\$ 360.00
Operational Support	Month / item	12	\$ 272.00
Routine maintenance	Metre	600	\$ 110.00
Contingencies			\$ 108.00
Sub-total of contract			\$ 12,505.00
Contract Title: Dissemination to prevention of children labor exploitation		Contract Number: 13/SOC/0901-00	
Social survey	Survey	4	\$ 400.00
Events	Event	14	\$ 1,910.00
Operational Support	Month / item	12	\$ 120.00
Contingencies			\$ 70.00
Sub-total of contract			\$ 2,500.00
Contract Title: Create ecotourism area		Contract Number: 13/TOU/0901-00	
Resort Management Committee	Committee	1	\$ 2,070.00
Operational Support	Month / item	12	\$ 390.00
Contingencies			\$ 40.00
Sub-total of contract			\$ 2,500.00
Contract Title: Water resource usage management		Contract Number: 13/WRM/0901-00	
Operational Support	Month / item	12	\$ 430.00
Training for water user communities	Person-Day	(32F+32M) X 25D	\$ 2,000.00
Contingencies			\$ 70.00
Sub-total of contract			\$ 2,500.00
GRAND TOTAL			\$ 305,425.17

Note: M= Male, F= Female, D=day

13.5 Other projects in the Province

13.5.1 Rural Poverty Reduction Program (RPRP)

There are no RPRP projects being implemented in this district or province at this time. The RPRP is only being implemented in Svay Rieng and Prey Veng

13.5.1.1 RPRP Projects from 2006 to 2008

No RPRP projects in this province at this time

13.5.1.2 RPRP Projects in 2009

No RPRP projects in this province at this time

13.5.2 Seth Korma 2007 to 2009

13.5.2.1 Seth Korma 2007 Estimated Expenditure and Outputs in 2007

There are no Seth Korma projects being implemented in this province at this time.
Source: UNICEF

13.5.2.2 Seth Korma 2008 Estimate Expenditure and Outputs in 2008

There are no Seth Korma projects being implemented in this province at this time.
Source: UNICEF

13.5.2.3 Seth Korma 2009 Budget and planned Outputs

There are no Seth Korma projects being implemented in this province at this time.
Source: UNICEF

SECTION D: SERVICES AND ORGANIZATIONS

14 Infrastructure

14.1 Lengths of and Expenditure on Roads in 2008 by District

Roads	PVR	Chey Sen	Chheb	Choam Khsant	Kuleaen	Rovieng	Sangkom Thmey	Tbaeng Meanchey	Preah Vihear
Length of paved road in the district	16	0	0	0	0	0	0	0	16 km
Length of unpaved roads in the district	667	142	n/a	64	53	408	n/a	n/a	n/a
Amount spent on construction of roads in 2008 (\$)	516,360	32,227	148,191	60,796	51,195	97,483	60,633	46,295	19,540
Amount spent on repair and rehabilitation of roads in 2008 (\$)	16,731	0	0	0	0	0	0	0	16,731

Note 1: Please note that these data are not necessarily complete or correct. The data are derived from government agencies at provincial and district level which used different recording systems, did not always have complete data or were, sometimes, less than willing to share their data.

Note 2: Please be aware that these data are incomplete due to the fact that the amounts for the construction, repair and rehabilitation recorded reflect only funds provided by the government, not the contributions by any other parties.

14.2 Scale of and Expenditure on Irrigation in 2008 by District

Irrigation	PVR	Chey Sen	Chheb	Choam Khsant	Kuleaen	Rovieng	Sangkom Thmey	Tbaeng Meanchey	Preah Vihear
Number of irrigation schemes operating in 2008	2	n/a	n/a	n/a	1	n/a	n/a	n/a	1
Total nr of hectares under irrigation in dry season 2008	22	n/a	n/a	n/a	22	n/a	n/a	n/a	n/a
Total funds spent in 2008 on construction of irrigation systems (\$)	-	n/a	n/a	n/a	n/a	n/a	n/a	n/a	n/a
Total funds spent in 2008 on rehabilitation/repair of irrigation systems (\$)	-	n/a	n/a	n/a	n/a	n/a	n/a	n/a	n/a
Total funds spent in 2008 on operation and maintenance (\$)	-	n/a	n/a	n/a	n/a	n/a	n/a	n/a	n/a

Note 1: Please note that these data are not necessarily complete or correct. The data are derived from government agencies at provincial and district level which used different recording systems, did not always have complete data or were, sometimes, less than willing to share their data.

Note 2: Please be aware that the data above are incomplete as these only reflect funds provided by the government, not the contributions by farmers or other parties.

14.3 Power Supply in 2008 by District

Electricity	PVR	Chey Sen	Chheb	Choam Khsant	Kuleaen	Rovieng	Sangkom Thmey	Tbaeng Meanchey	Preah Vihear
Total number of electricity connections to households	2,297	0	0	365	0	350	0	0	1,582
Total number of electricity connections to agencies, companies, organizations	52	0	0	0	0	0	0	0	52
Total volume in KWh of electricity consumed last in 2008	521,085	0	0	18,700	0	17,600	0	0	484,785
Total amount collected from users for consumed electricity (\$)	363,530	0	0	18,700	0	17,600	0	0	327,230
Per capita electricity consumption in 2008 in Kwh	16	0	0	1	0	0	0	0	35

Note 1: Please note that these data are not necessarily complete or correct. The data are derived from government agencies at provincial and district level which used different recording systems, did not always have complete data or were, sometimes, less than willing to share their data.

Note 2: These data only record electricity provided by electricity companies and does not include homes powered by generators or batteries (for this information see Section B: General Profile, Part 1: General Information; table 1.3.1 and chart 1.3.4).

Note 3: In most provinces electricity is only provided through town-based networks

Note 4: Per capita consumption is calculated by dividing the total volume of electricity produced in 2008 by the number of people living in each district as per the 2008 census (for the provincial data it is calculated against the number of people living in the province)

15 Health Facilities

Please note that the Operational District (health) boundaries are different from the administrative district boundaries. Therefore the data provided here show the facilities, staff, NGOs etc in each Operational District within the province NOT the usual administrative district.

Acronyms

Com Cov	Commune Covered	MW2	Secondary Midwives
CPA	Complementary Package of Activities	NU1	Primary Nurse
Dr	Doctor	NU2	Secondary Nurse
FDH	Former District Hospital	OD	Operational District
HC	Health Center	Others	Other Staffs
HC (NB)	Health Center no building	PHD	Provincial Health Department
HP	Health Post	Pop 04-05	Population Covered 2004 or 2005
MA	Medical Assistant	RH	Referral Hospital
MPA	Minimum Package of Activities	Vil Cov	Village Covered
MW1	Primary Midwives	VIL-HC	Distance from Village to Health Center

15.1 Health Facilities by Operational District

Preah Vihear	OD	RH	HC	HP
Preah Vihear	1	1	13	19
Total	1	1	13	19

15.2 Health Facilities and Staff by Operational District, 2008

This table shows health facilities, number of staff by type and coverage of health facilities in each operational district.

No	Facility Name	Type	Class	Dr	Ma	Nu2	Nu1	Mw2	Mw1	Others	Com Cov	Vil Cov	Pop. 04-05
Preah Vihear													
1	Boribo	HC	MPA	0	0	2	1	0	1	0	2	6	4,384
2	Chamraeun	FDH	MPA	0	0	2	6	0	2	4	4	22	13,739
3	Chhaeb	FDH	MPA	0	0	1	6	0	4	8	8	26	13,978
4	Chhnuon	HC	MPA	0	0	2	6	1	2	1	3	11	5,355
5	Choam Ksant	FDH	MPA	0	1	0	4	1	3	1	4	16	11,379
6	Chrach	HC(NB)	None	0	0	0	0	0	0	0	3	12	8,800
7	Kou Len	FDH	MPA	0	0	0	4	1	3	1	5	18	14,716
8	Phnom Dek	HC	MPA	0	0	3	1	0	3	1	3	15	9,132
9	Putrea	HP	Nil	0	0	0	0	0	0	0	1	1	
10	Ro Vieng	FDH	MPA	0	0	3	2	0	2	1	6	31	16,651
11	Saang	FDH	MPA	0	0	5	6	0	6	0	3	9	8,560
12	Sra'aem	HC	MPA	0	0	2	3	1	2	0	1	7	4,155
13	Tbaeng Mean chey	HC	MPA	0	0	2	5	0	1	0	6	32	23,814
Total:				0	1	22	44	4	29	17	49	206	134,663

Source: MEDiCAM

15.3 Deliveries in 2007, by Operational District

OD	Deliveries	Deliveries at home		Deliveries	Total deliveries	Total deliveries
	at HC	By Health Staff	By TBAs	at RH	by Health Staff	by health staff and TBAs
Tbeng Meanchey	1019	343	1450	326	1688	3138
<i>Sub-total</i>	<i>1019</i>	<i>343</i>	<i>1450</i>	<i>326</i>	<i>1688</i>	<i>3138</i>

Source: MoH, Annual Statistics 2007

15.5 Major Health NGOs active in the Province, by Operational District

Operational District: Preah Vihear

FHI/IMPACT (Family Health International/Impact)

Phone: 023211914, Email: info@fhi.org.kh, Contact Person: Song Ngak

HI-B (Handicap International Belgium)

Phone: 023217300, Email: direction@hib-cambodia.org, Contact Person: Bruno Leclercq

HU (Health Unlimited)

Phone: 023215192, Email: hucco@everyday.com.kh, Contact Person: Khou Somatheavy

IRIS (International Resources for the Improvement of Sight)

Phone: 023994114, Email: iriscambodia@online.com.kh, Contact Person: Rosham Bista

SMCC (Society for Malaria Control in Cambodia)

Phone: 023996400, Email: bonatith@smcc.org.kh, Contact Person: Tith Bona

UNFPA (United Nations Population Fund)

Phone: 023215519, Email: may@unfpa.org, Contact Person: Sok Sokun

WFP (World Food Program)

Phone: 023212137, Email: mory.heng@wfp.org, Contact Person: Heng Mory

Operational District: Unknown

WB (The World Bank)

Phone: 023217301, Email: lhawkins@worldbank.org, Contact Person: Simth Beng

16 Education²

16.1 Schools, Classes, Students and Staff in 2007/2008

District	Number of Schools	Disadv. Schools	Number of Classes	Classes in Pagoda	Enrollment		Repeaters		Teaching Staff		Non-Teaching Staff		Total Staff	
					Total	Girl	Total	Girl	Total	Female	Total	Female	Total	Female
Chey Saen	23	2	144	0	5,280	2,467	749	322	89	16	22	4	111	20
Chhaeb	27	1	144	3	4,135	1,888	982	442	94	10	6	0	100	10
Choam Ksant	29	3	164	2	4,852	2,409	689	305	105	35	19	7	124	42
Kuleaen	33	0	161	6	5,966	2,875	806	379	125	27	24	3	149	30
Rovieng	49	1	300	2	9,512	4,582	1,381	578	262	105	42	7	304	112
Sangkum Thmei	26	4	130	0	4,453	2,206	677	327	91	15	17	2	108	17
Tbaeng Mean Chey	28	0	221	4	8,376	3,862	783	344	238	115	70	24	308	139
Whole Province	215	11	1,264	17	42,574	20,289	6,067	2,697	1,004	323	200	47	1,204	370
- Urban Area	28	0	221	4	8,376	3,862	783	344	238	115	70	24	308	139
- Rural Area	98	7	574	2	19,245	9,255	2,807	1,227	442	136	81	13	523	149
- Remote Area	89	4	469	11	14,953	7,172	2,477	1,126	324	72	49	10	373	82

² All the data for section 12 comes from the Ministry of Education, Youth and Sport (MoEYS)

16.2 Characteristics of Schools and School Principals in 2007/2008

District	Number of Schools				2 - Shift Schools	Floating Schools	Schools in Pagoda	Attached Pre-Sch.	Schools Without		Characteristics of School Principals (Incharge)			
	Pre-Sch.	Primary	College	Lycee					Water Sup.	Toilet	Avg. Age	Avg. Service	U.Sec+ Ed.	Female
Chey Saen	1	18	3	1	19	0	1	1	10	14	33.4	11.0	4	2
Chhaeb	0	23	4	0	19	0	0	0	20	18	37.4	12.8	6	0
Choam Ksant	1	23	4	1	14	0	0	1	17	19	40.5	17.4	1	3
Kuleaen	1	27	5	0	20	0	0	1	24	22	34.7	11.3	4	1
Rovieng	4	38	6	1	30	0	0	4	25	22	40.1	17.2	6	8
Sangkum Thmei	1	21	3	1	15	0	0	1	15	17	39.4	19.2	2	2
Tbaeng Mean Chey	4	19	4	1	16	0	0	3	15	9	39.3	16.2	5	4
Whole Province	12	169	29	5	133	0	1	11	126	121	38.1	15.2	28	20
- Urban Area	4	19	4	1	16	0	0	3	15	9	39.3	16.2	5	4
- Rural Area	6	77	12	3	64	0	1	6	50	53	38.4	16.3	12	12
- Remote Area	2	73	13	1	53	0	0	2	61	59	37.4	13.8	11	4

16.3 Enrollment by Level of Education, 2006/2007

District	Number of Schools	Pre-school		Primary		Lower Sec.		Upper Sec.		Total		% Female	
		Total	Girl	Total	Girl	Total	Girl	Total	Girl	Total	Girl	Primary	All Level
Chey Saen	22	40	25	4,629	2,164	571	274	68	34	5,308	2,497	46.7	47.0
Chhaeb	27	68	39	3,926	1,878	362	155	0	0	4,356	2,072	47.8	47.6
Choam Ksant	27	50	26	4,321	2,109	487	222	71	24	4,929	2,381	48.8	48.3
Kuleaen	31	25	14	4,772	2,233	536	263	0	0	5,333	2,510	46.8	47.1
Rovieng	47	173	93	7,752	3,675	1,276	582	384	151	9,585	4,501	47.4	47.0
Sangkum Thmei	24	65	40	3,963	1,968	428	199	0	0	4,456	2,207	49.7	49.5
Tbaeng Mean Chey	26	264	135	5,998	2,870	1,556	727	1,087	447	8,905	4,179	47.8	46.9
Whole Province	204	685	372	35,361	16,897	5,216	2,422	1,610	656	42,872	20,347	47.8	47.5
- Urban Area	26	264	135	5,998	2,870	1,556	727	1,087	447	8,905	4,179	47.8	46.9
- Rural Area	93	278	158	16,344	7,807	2,275	1,055	452	185	19,349	9,205	47.8	47.6
- Remote Area	85	143	79	13,019	6,220	1,385	640	71	24	14,618	6,963	47.8	47.6

16.4 Enrollment by Level of Education 2007/2008

District	Number of Schools	Pre-school		Primary		Lower Sec.		Upper Sec.		Total		% Female	
		Total	Girl	Total	Girl	Total	Girl	Total	Girl	Total	Girl	Primary	All Level
Chey Saen	23	48	23	4,523	2,102	573	283	136	59	5,280	2,467	46.5	46.7
Chhaeb	27	0	0	3,706	1,678	429	210	0	0	4,135	1,888	45.3	45.7
Choam Ksant	29	36	15	4,037	2,029	665	320	114	45	4,852	2,409	50.3	49.6
Kuleaen	33	17	12	5,345	2,519	604	344	0	0	5,966	2,875	47.1	48.2
Rovieng	49	172	89	7,441	3,583	1,381	674	518	236	9,512	4,582	48.2	48.2
Sangkum Thmei	26	45	31	3,843	1,911	494	238	71	26	4,453	2,206	49.7	49.5
Tbaeng Mean Chey	28	252	134	5,413	2,614	1,535	654	1,176	460	8,376	3,862	48.3	46.1
Whole Province	215	570	304	34,308	16,436	5,681	2,723	2,015	826	42,574	20,289	47.9	47.7
- Urban Area	28	252	134	5,413	2,614	1,535	654	1,176	460	8,376	3,862	48.3	46.1
- Rural Area	98	265	143	15,807	7,596	2,448	1,195	725	321	19,245	9,255	48.1	48.1
- Remote Area	89	53	27	13,088	6,226	1,698	874	114	45	14,953	7,172	47.6	48.0

16.5 New Intake and Enrollment by Level and Age (Both Sexes), 2007/2008

District	Grade 1 Intake		Primary Enrollment		Grade 7 Intake		L. Sec. Enrollment		Grade 10 Intake		U. Sec. Enrollment		% Over-age Enrollment in		
	Total	Aged 6	Total	Aged 11+	Total	Aged 12	Total	Aged 14+	Total	Aged 15	Total	Aged 17+	Primary	L. Sec.	U. Sec.
Chey Saen	804	466	4,523	1,546	265	34	573	367	86	13	136	82	34.2	64.0	60.3
Chhaeb	561	327	3,706	1,269	220	15	429	310	0	0	0	0	34.2	72.3	0.0
Choam Ksant	494	278	4,037	1,412	339	43	665	417	58	9	114	58	35.0	62.7	50.9
Kuleaen	1,109	487	5,345	1,846	233	17	604	389	0	0	0	0	34.5	64.4	0.0
Rovieng	1,041	665	7,441	2,216	590	89	1,381	854	252	32	518	338	29.8	61.8	65.3
Sangkum Thmei	628	333	3,843	1,112	181	12	494	356	71	2	71	45	28.9	72.1	63.4
Tbaeng Mean Chey	873	501	5,413	1,704	641	119	1,535	957	474	90	1,176	585	31.5	62.3	49.7
Whole Province	5,510	3,057	34,308	11,105	2,469	329	5,681	3,650	941	146	2,015	1,108	32.4	64.2	55.0
- Urban Area	873	501	5,413	1,704	641	119	1,535	957	474	90	1,176	585	31.5	62.3	49.7
- Rural Area	2,473	1,464	15,807	4,874	1,036	135	2,448	1,577	409	47	725	465	30.8	64.4	64.1
- Remote Area	2,164	1,092	13,088	4,527	792	75	1,698	1,116	58	9	114	58	34.6	65.7	50.9

16.6 Condition of School Buildings, 2007/2008

District	Total Number of		Concrete/Brick Structure		Wooden Structure		Bamboo Structure		New Buildings		Buildings Without Good		
	Buildings	Rooms	Buildings	Rooms	Buildings	Rooms	Buildings	Rooms	Repaired	Constructed	Floor	Roof	Wall
Chey Saen	28	98	10	53	16	41	2	4	4	3	6	1	7
Chhaeb	35	108	16	60	16	41	3	7	0	12	17	2	7
Choam Ksant	38	124	18	75	13	36	7	13	4	2	10	6	12
Kuleaen	40	134	20	81	18	52	2	1	3	6	11	2	5
Rovieng	89	236	35	143	39	77	15	16	9	7	20	6	21
Sangkum Thmei	33	97	11	52	16	39	6	6	4	3	22	8	18
Tbaeng Mean Chey	65	187	26	121	37	64	2	2	0	1	19	5	13
Whole Province	328	984	136	585	155	350	37	49	24	34	105	30	83
- Urban Area	65	187	26	121	37	64	2	2	0	1	19	5	13
- Rural Area	150	431	56	248	71	157	23	26	17	13	48	15	46
- Remote Area	113	366	54	216	47	129	12	21	7	20	38	10	24

16.7 Condition of Classrooms and Existence of Separate School Office and Library, 2007/2008

District	Number of Classrooms	Number of Classrooms			Classrooms Without Good			Number of furniture needed				Schools with Separate	
		in Pagoda	Repaired	New Constr.	Floor	Roof	Wall	Desks	Chairs	Blk.board	Tchr.Table	Office	Library
Chey Saen	82	0	16	3	13	2	20	722	84	36	46	8	3
Chhaeb	89	3	0	29	37	4	12	229	143	32	29	3	2
Choam Ksant	104	2	7	4	19	11	23	378	295	21	29	10	4
Kuleaen	107	6	7	25	23	0	4	166	186	18	17	9	5
Rovieng	195	2	20	19	39	6	35	833	255	53	72	14	8
Sangkum Thmei	79	0	9	10	44	13	36	305	183	20	32	7	4
Tbaeng Mean Chey	158	4	0	0	54	16	31	224	196	8	49	8	3
Whole Province	814	17	59	90	229	52	161	2,857	1,342	188	274	59	29
- Urban Area	158	4	0	0	54	16	31	224	196	8	49	8	3
- Rural Area	356	2	45	32	96	21	91	1,860	522	109	150	29	15
- Remote Area	300	11	14	58	79	15	39	773	624	71	75	22	11

16.8 Community Participation and Financing, 2007/2008

District	Parent Association				Comm. Teachers	Teaching Monks	PAP Fund (Riel)		Number of Schools Obtaining Funds from				
	Exists	Held Meet.	Total	Female			per Student	per School	Sch. Income	Community	Gvt. For building	Abroad	IOs/ NGOs
Chey Saen	21	21	7	2	0	0	13,124	2,512,578	0	1	0	0	1
Chhaeb	23	22	7	2	0	0	11,197	2,001,821	2	1	2	0	0
Choam Ksant	24	23	7	2	0	0	11,095	2,004,967	0	0	0	0	0
Kuleaen	29	28	6	2	6	6	26,337	6,226,262	1	2	1	1	3
Rovieng	47	45	8	2	2	2	9,872	2,071,610	0	3	7	0	1
Sangkum Thmei	25	24	8	2	0	0	11,977	2,443,407	0	0	0	0	0
Tbaeng Mean Chey	23	23	7	1	1	2	10,790	4,417,435	0	1	0	3	0
Whole Province	192	186	7	2	9	10	12,815	2,906,650	3	8	10	4	5
- Urban Area	23	23	7	1	1	2	10,790	4,417,435	0	1	0	3	0
- Rural Area	93	90	8	2	2	2	10,739	2,212,746	0	4	7	0	2
- Remote Area	76	73	6	2	6	6	16,490	3,241,484	3	3	3	1	3

16.9 Indicators on Students and Staff by District, 2007/2008

District	Pupil Teacher Ratio	Pupil Staff Ratio	Pupil Class Ratio	Pupil Classroom Ratio	Classes per Classroom	Classroom Area (m2) per Pupil	Percentage of Total Students in				Percentage of	
							Pre-school	Primary	Lower Secondary	Upper Secondary	Non-tching Staff	Female Staff
Chey Saen	59.3	47.6	36.7	64.4	1.8	0.9	0.9	85.7	10.9	2.6	19.8	18.0
Chhaeb	44.0	41.4	28.7	46.5	1.6	1.2	0.0	89.6	10.4	0.0	6.0	10.0
Choam Ksant	46.2	39.1	29.6	46.7	1.6	1.2	0.7	83.2	13.7	2.3	15.3	33.9
Kuleaen	47.7	40.0	37.1	55.8	1.5	1.0	0.3	89.6	10.1	0.0	16.1	20.1
Rovieng	36.3	31.3	31.7	48.8	1.5	1.2	1.8	78.2	14.5	5.4	13.8	36.8
Sangkum Thmei	48.9	41.2	34.3	56.4	1.6	1.0	1.0	86.3	11.1	1.6	15.7	15.7
Tbaeng Mean Chey	35.2	27.2	37.9	53.0	1.4	1.1	3.0	64.6	18.3	14.0	22.7	45.1
Whole Province	42.4	35.4	33.7	52.3	1.6	1.1	1.3	80.6	13.3	4.7	16.6	30.7
- Urban Area	35.2	27.2	37.9	53.0	1.4	1.1	3.0	64.6	18.3	14.0	22.7	45.1
- Rural Area	43.5	36.8	33.5	54.1	1.6	1.0	1.4	82.1	12.7	3.8	15.5	28.5
- Remote Area	46.2	40.1	31.9	49.8	1.6	1.1	0.4	87.5	11.4	0.8	13.1	22.0

17 Private Sector organizations in the District

17.1 Registered Companies in 2008, by district

On private sector at commune and/or district level	PVR	Chey Sen	Chheb	Choam Khsant	Kuleaen	Rovieng	Sangkom Thmey	Tbaeng Meanchey	Preah Vihear
Businesses and Companies									
Number of registered agricultural enterprises (except family farms)	2	0	0	0	0	2	0	0	0
Number of registered shops, restaurants, transporters and other services	2,672	288	237	471	428	531	155	317	218
Number of manufacturing companies	78	6	3	0	25	12	11	2	19
Number of registered forestry enterprises	-	0	0	0	0	0	0	0	0
Number of registered mining companies	-	0	0	0	0	0	0	0	0
Number of fin/ancial institutions	8	0	0	1	2	2	0	0	3
Number of other commercial institutions	-	0	0	0	0	0	0	0	0
Estimated number of informal enterprises (not registered)	n/a	n/a	n/a	n/a	n/a	n/a	n/a	n/a	n/a
Employment									
Number of people employed in 2008 by companies or any other enterprises	n/a	n/a	n/a	n/a	n/a	n/a	n/a	n/a	n/a
Investment									
Amount invested in 2008 by private sector (\$)	n/a	n/a	n/a	n/a	n/a	n/a	n/a	n/a	n/a
Markets									
Number of markets, operating at least weekly	12	0	1	6	2	1	1	0	1

Note: These data are not comprehensive as different companies and business are registered with different departments and not all departments were able or willing to provide detailed information. The number of informal enterprises reflects a rough estimate, made at provincial level and could not be verified.

Source: Data from SPPA's

17.2 Credit to Farmers in 2008, by district

Credit	PVR	Chey Sen	Chheb	Choam Khsant	Kuleaen	Rovieng	Sangkom Thmey	Tbaeng Meanchey	Preah Vihear
Volume of credit provided to farmers in 2008 (\$)	4,237,244	311,010	5,500	325,444	723,875	800,975	167,020	1,897,920	5,500
Number of farmers receiving credit in 2008	3,582	451	50	385	614	1,129	270	683	50
Volume of credit provided to companies in 2008 (\$)	n/a	n/a	n/a	n/a	n/a	n/a	n/a	n/a	n/a

Note: Please note that these data are not necessarily complete or correct. The data are derived from government agencies at provincial and district level which used different recording systems, did not always have complete data or were, sometimes, less than willing to share their data.

SECTION E: MISCELLANEOUS INFORMATION

18 Data on Poverty

18.1 Predicted Poverty Rates for 2009, by commune

The **Predicted Family Poverty Rate** is based on a statistical model (robust multilevel mixed effect regression) at village level developed by the NCDD M&E Unit and uses CDB data for making an estimate of the predicted poverty rate (this is: the portion of total families in the district or commune who are deemed poor) for the following year using current year data.

The basis for this predicted poverty rate also uses IDPoor (a project of the Ministry of Planning with technical assistance provided by GTZ) data.

District	Commune	2004	2009
Chey Saen	S'ang	50.10%	.%
Chey Saen	Tasu	49.90%	44.50%
Chey Saen	Khyang	47.60%	41.40%
Chey Saen	Chrach	53.60%	47.30%
Chey Saen	Thmea	53.40%	47.20%
Chey Saen	Putrea	50.20%	.%
Chhaeb	Chhaeb Muoy	57%	43.60%
Chhaeb	Chhaeb Pir	52.30%	51.20%
Chhaeb	Sangkae Muoy	54.10%	49.20%
Chhaeb	Sangkae Pir	53.30%	47.50%
Chhaeb	Mlu Prey Muoy	52.40%	50.80%
Chhaeb	Mlu Prey Pir	59.10%	53.30%
Chhaeb	Kampong Sralau Muoy	50.80%	44%
Chhaeb	Kampong Sralau Pir	51.70%	46.50%
Choam Ksant	Choam Ksant	44.90%	42.10%
Choam Ksant	Tuek Kraham	51%	42.50%
Choam Ksant	Pring Thum	47.80%	45.60%
Choam Ksant	Rumdaoh Srae	46.90%	44.50%
Choam Ksant	Yeang	55.10%	48.50%
Choam Ksant	Kantuot	51.90%	48.30%
Kuleaen	Kuleaen Tboundg	44.60%	38.70%
Kuleaen	Kuleaen Cheung	48.10%	.%
Kuleaen	Thmei	50.70%	40.90%
Kuleaen	Phnum Penh	48.40%	43.40%
Kuleaen	Phnum Tbaeng Pir	47.60%	42.50%
Kuleaen	Srayang	54.40%	45.30%
Rovieng	Robieb	44.90%	.%
Rovieng	Reaksmei	45.60%	34.70%
Rovieng	Rohas	45.50%	38.30%
Rovieng	Rung Roeang	44.20%	40.70%
Rovieng	Rik Reay	50.80%	37.60%
Rovieng	Ruos Roan	46.50%	38.70%
Rovieng	Rotanak	52.40%	50.40%
Rovieng	Rieb Roy	53%	48.10%
Rovieng	Reaksa	51.10%	49.60%
Rovieng	Rumdaoh	53.80%	.%
Rovieng	Romtum	54%	.%
Rovieng	Romoneiy	52.10%	44%
Sangkum Thmei	Chamraeun	47.70%	38.30%

District	Commune	2004	2009
Sangkum Thmei	Ro'ang	47.40%	41.80%
Sangkum Thmei	Phnum Tbaeng Muoy	49.50%	43.40%
Sangkum Thmei	Sdau	53.70%	48.30%
Sangkum Thmei	Ronak Ser	54.80%	52.80%
Tbaeng Mean Chey	Prame	47.70%	.%
Tbaeng Mean Chey	Preah Khleang	53.10%	.%
Tbaeng Mean Chey	Chhean Mukh	47.90%	.%
Tbaeng Mean Chey	Pou	55.50%	49.40%
Preah Vihear	Kampong Pranak	41.20%	20.80%
Preah Vihear	Pal Hal	49.30%	36.50%

18.2 Poverty data from Survey

The Ministry of Planning IDPoor Program has developed standardized Procedures for Identification of Poor Households in rural areas. These Procedures are implemented using a participatory and consultative process by sub-national government structures and community representatives.

The IDPoor Program is managed by the Ministry of Planning (MOP), in cooperation with the Ministry of Interior's Department of Local Administration (DOLA). The program is supported by the Federal Republic of Germany, with technical assistance provided by German Technical Cooperation (GTZ). In 2009, AusAID also provided funding support to the Program.

Objective

The IDPoor Program aims to implement the Procedures for Identification of Poor Households in rural areas as widely as possible, in order to provide data on the level of poverty of areas and households that can be used by a large range of institutions and organizations for targeting services and development assistance to poor areas and poor households.

Coverage: During 2007, 2008 and 2009 the IDPoor Procedures have been implemented in 18 provinces (with partial or complete coverage), covering a total of around 7000 rural villages. The MOP and a number of NGO partners who are Health Equity Fund Operators have collaborated in collecting this data from different areas.

Categorization: Identified poor households are classified under two poverty categories: Poor Level 1 (very poor), and Poor Level 2 (poor). Households are classified based on data collected using a standard questionnaire, together with consideration by villagers of these households' special circumstances.

Further information: Please go to the IDPoor Program webpage at www.mop.gov.kh/Projects/IDPoor/tabid/154/Default.aspx

This province has not yet been covered by IDPoor