



# THE CITY DEVELOPMENT PLAN IN PHNOM PENH

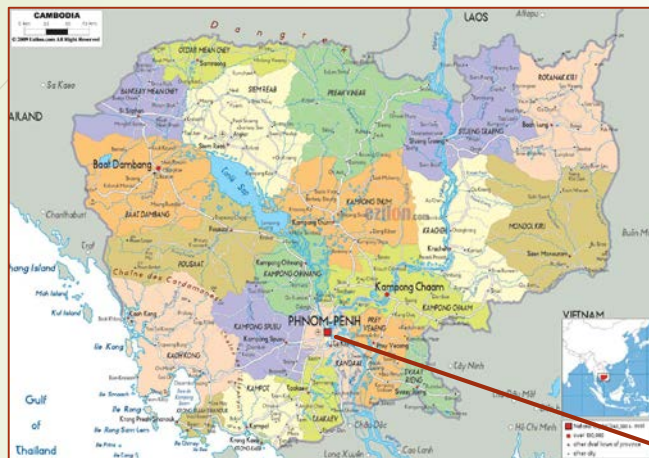
“SEMINAR ON CITY TO CITY COLLABORATION  
PROJECT FOR  
LOW CARBON CITY DEVELOPMENT IN ASIA”

1

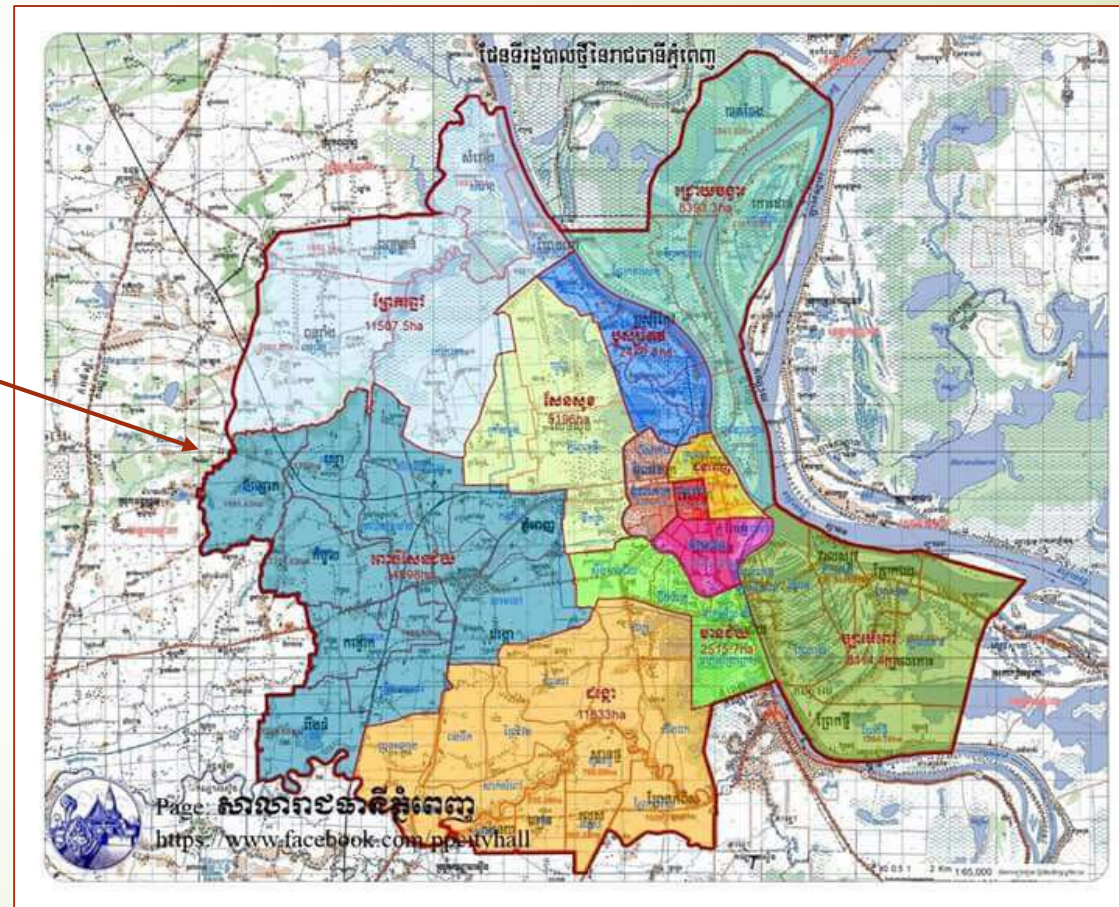
Prepared and Presented by **Mr. Keo Channarith, MM**  
The Chief of Landfill

30 January 2018

# Phnom Penh Overview



- Total size: 678 square kilometers
- Population: 1,445,888 (Female: 765,466) statistic 2014.
- Household: 278,752
- Density: 2,132 person/km<sup>2</sup>
- District/Khan: 12
- Sangkat: 105
- Village: 953





# The Phnom Penh's Path

- Sangkom Reasniyum 1953-1975



- Pol Pot Genocide 1975-1979

- Path to Metropolitan in 2035



- Reborn 1979-2018

# Development and Challenges





# Development and Improvement

## Drainage and Sewerage System

- Maintained and re-installed the manholes, ditches and pipeline.
- Constructed and improved the pumping water stations.



# Development and Improvement

## Drainage and Sewerage System

- Protecting against the filling of soil to occupy land and illegal land grabbing on the wastewater storing system
- Strictly prohibit all illegal constructions and residences in reservoirs and lakes





# Development and Improvement

## Traffic and Transportation

- Constructed the detours and city belt roads
- Improved the roundabout
- Constructed overpass bridge
- Parking lots



# Development and Improvement

## Traffic and Transportation

- Developed the satellite cities
- Expanded the carriageway
- The creation and increasing the green surface areas





# Development and Improvement

## Traffic and Transportation

- Encouraged the city bus



- Installed new traffic lights and set up central system



# Development and Improvement

## Waste Management

Waste Producer

Waste Collector and Transporter

Waste Disposal Site  
(Landfill)

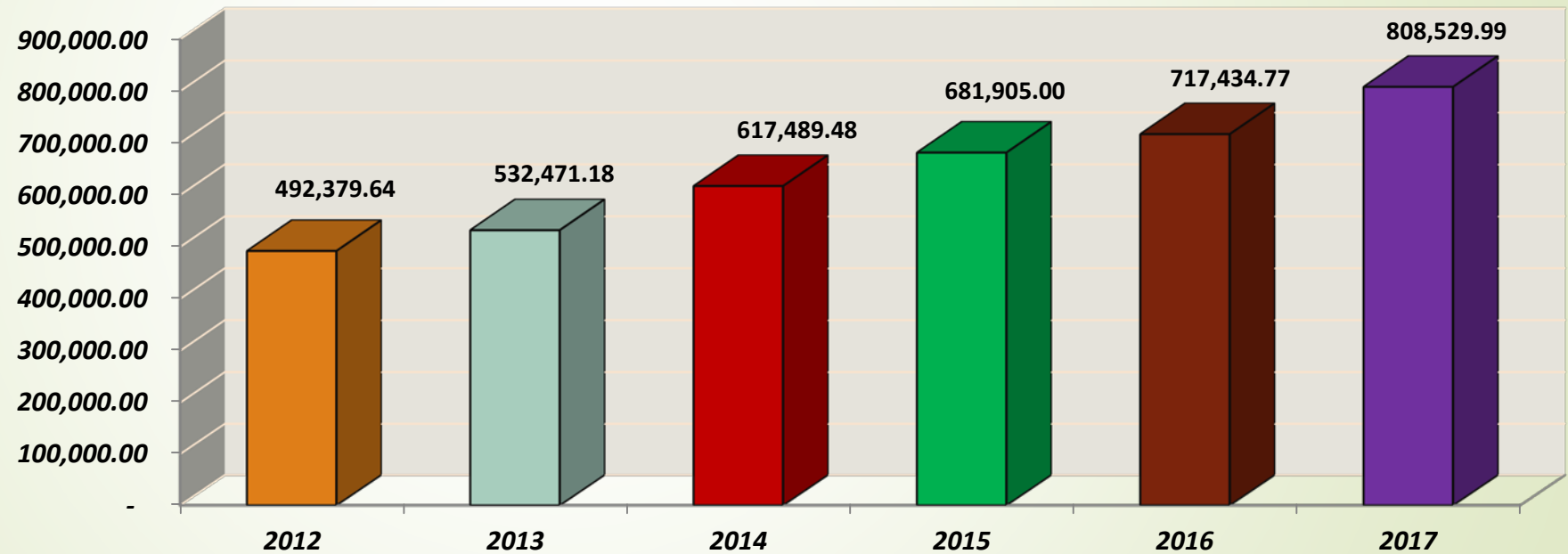




# Development and Improvement

Waste Management

The diagram of waste amount during 5 years from 2012 to 2017



# Development and Improvement

## Waste Management

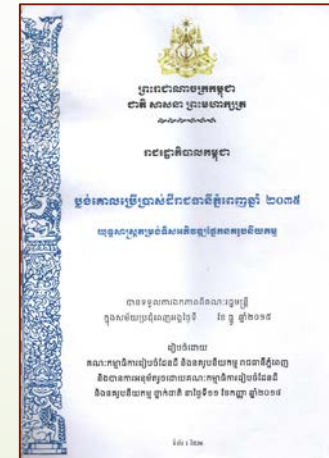
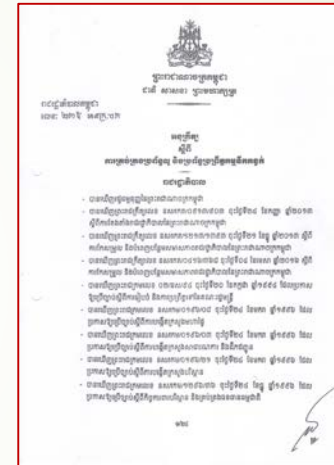
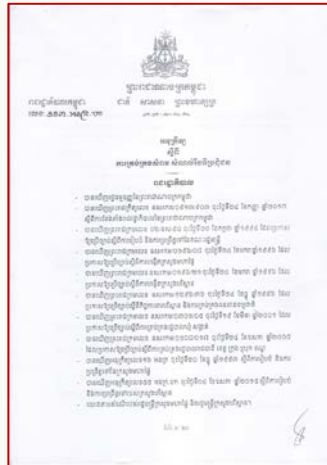
- Protected the smelling and burning at landfill by covering soil on the dumping areas.





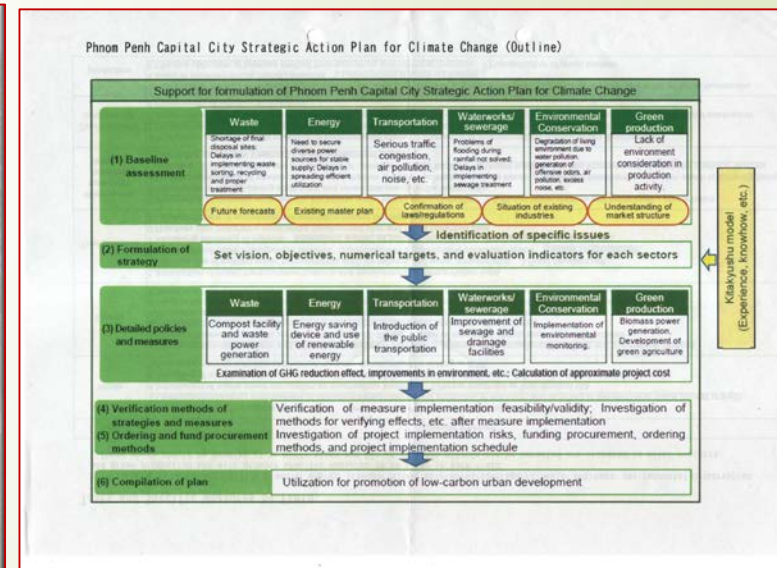
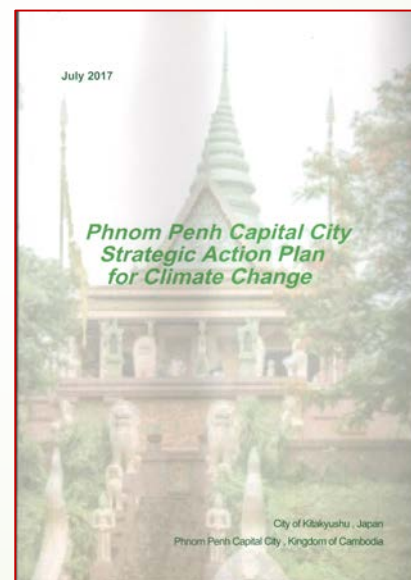
# Policy and Strategic Plan Mechanism

## Legislations and Regulations enforcement



# Policy and Strategic plan Mechanism

- Sister city collaboration between Phnom Penh and Kitakyushu





# Affordability

- Awarded for "Clean Water Supply, Water for All" from ADB in Manila, the Philippines, 2004
- Awarded for "Leadership" in London, UK, 2005
- Awarded for "Asia-Pacific City Environment" Melbourne, Australia, 2006
- Awarded as a leader in " mechanisms for on-site environmental improvement" London, UK, in 2007
- Awarded for the " First ASIAN Environmentally Sustainable City" Hanoi, Vietnam, 2008

# Affordability

- Awarded for “Sambo-Japan Prize (IYSH)” buy UPDF in Tokyo city, Japan in 2009
- Awarded for “Stockholm Clean Water Industry” England, 2010
- Awarded for the “Second ASIAN Environmentally Sustainable City” Bali, Indonesia, 2011
- Awarded for “Phnom Penh-World Capital of Culture and Tourism” by European Council of Tourism and Trade-ECTT, Phnom Penh, 2017



An aerial photograph of a city, likely in Southeast Asia, featuring a large white stupa (a type of Buddhist monument) situated in a lush green park. In the foreground, a large circular clock face is visible, set into the ground. The city extends to a river in the background, with various buildings and a bridge visible. The text "THANK YOU FOR YOUR PAY ATTENTION!" is overlaid in white capital letters on the right side of the image.

**THANK YOU  
FOR YOUR PAY ATTENTION!**